

PERFORMANCE X3

## USER MANUAL

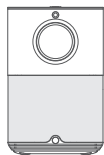
Please read this user manual thoroughly before you use the product and keep it well for future reference.

Thank you for choosing VANKYO.  
If you have any questions or need any help,  
please feel free to contact us at  
[support@ivankyo.com](mailto:support@ivankyo.com)

# CONTENTS

WHAT'S INCLUDED .....	01
NOTICE .....	01
PRODUCT OVERVIEW .....	02
QUICK START .....	03
PROJECTOR CONNECTION AND INPUT SOURCE .....	05
WIFI CONNECTION .....	06
SCREEN MIRRORING .....	07
For iOS System .....	07
For Android System .....	09
BLUETOOTH CONNECTION .....	10
SETTINGS .....	13
PROJECTION DISTANCE & SIZE .....	14
SPECIFICATION .....	15
TROUBLESHOOTING GUIDE .....	15

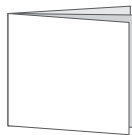
# WHAT'S INCLUDED



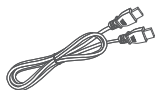
Projector



Remote  
(Batteries Not Included)



User Manual



HDMI Cable

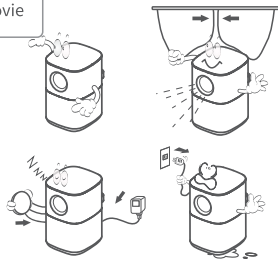


Power Cable

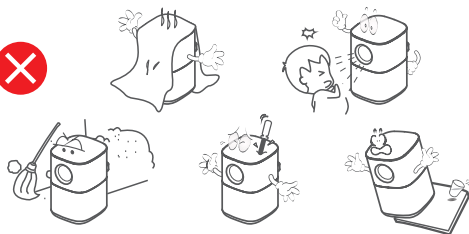
## NOTICE

### Recommended

Video, Movie

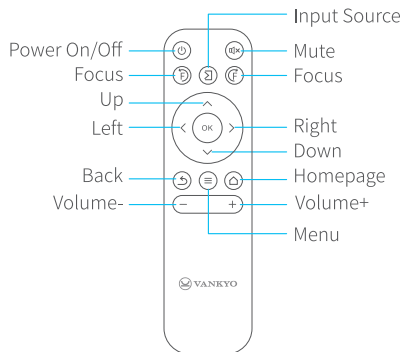
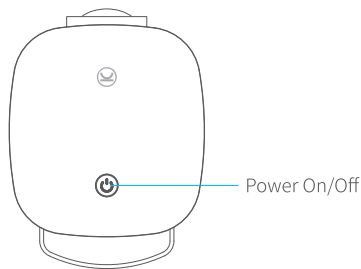
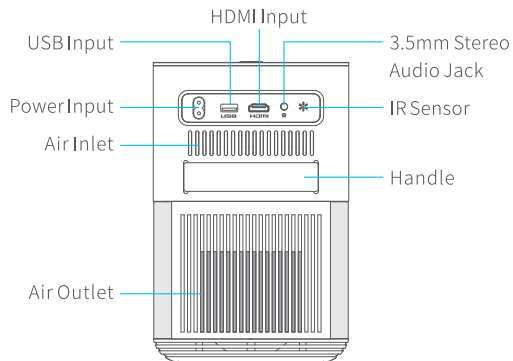
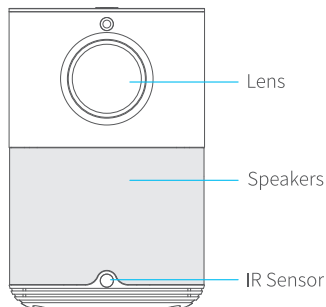


### NOT Recommended



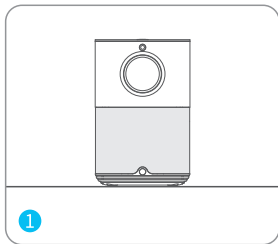


# PRODUCT OVERVIEW

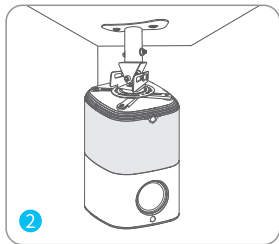


# QUICK START

## 1. Projector Installation




Horizontal Placement.



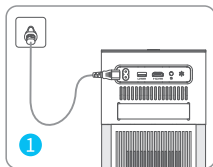
Ceiling Mounting (Before mounting, please remove the four rubber pads at the bottom of the projector).

### Note:

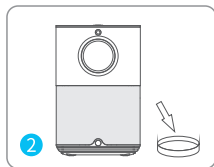
Whichever installation option you select, please make sure:

1. the projector is centered directly in front of the wall/screen, but not tilted or placed at an angle toward the wall/screen;
2. to go to **Homepage > Settings**  **> Projection Settings > Projection Mode** to select the corresponding projection mode so the images can be projected correctly.

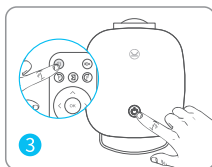
## 2. Power On/Off



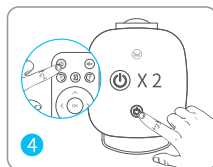
Plug the power cord into an outlet.



Take off the lens cover.



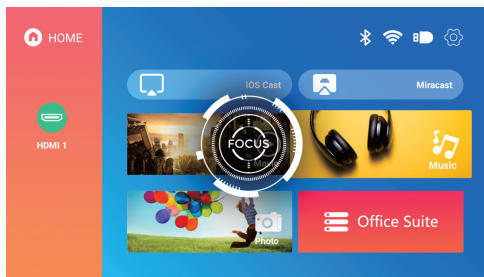
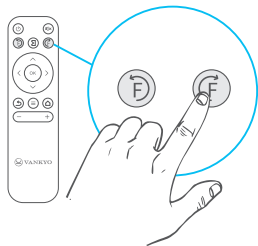
Press the **Power Button** to turn on the projector.



Press the **Power Button** twice to turn off the projector.

### 3. Image Adjustment

- 1 Press the focus buttons on the remote to sharpen the image focus until the blurry image becomes clear.



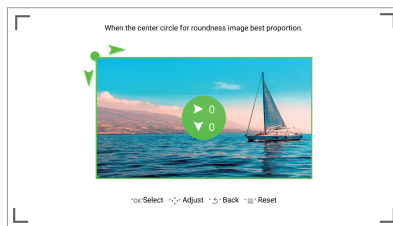
- 2 Go to Homepage > Settings > Projection Settings > Keystone Advanced to manually correct the distortion.

#### Note:

- \* Select **Manual**: Horizontal & Vertical Keystone
- \* Select **Side**: 4-Point Keystone



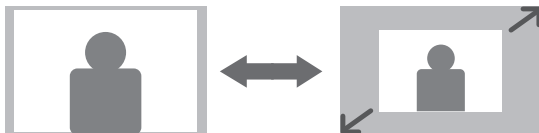
OR



- 2 Go to Homepage > Settings  > Projection Settings, then select **Digital Zoom** to enlarge or reduce the image.

**Note:**

Please ensure **Keystone Advanced** is set to **Manual** before adjusting the image size.



## PROJECTOR CONNECTION AND INPUT SOURCE

Connect your device to the projector correctly, then select the right input source on the homepage.

### 1. USB Connection

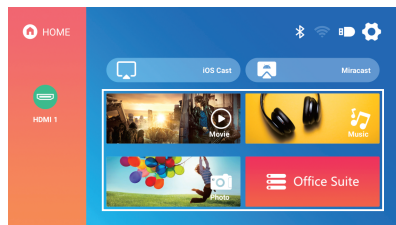
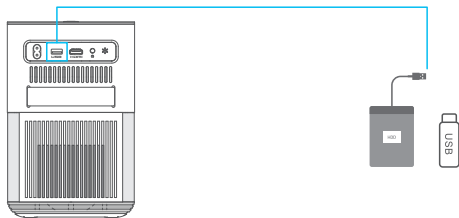


Photo Format Supported

BMP/JPG/PNG/JPEG

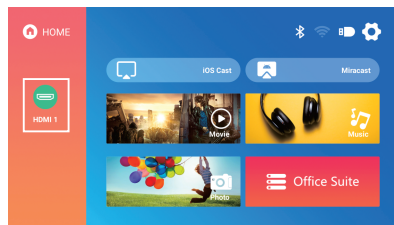
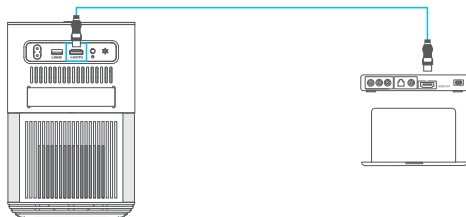
Audio Format Supported

AC3/AAC/MP2/MP3/PCM/FLAC/WMA

Video Format Supported	AVI/MP4/MKV/FLV/MOV/RMVB/3GP/MPEG2/H.264/XVID/MPEG1
Text Format Supported	PowerPoint/Excel/TXT

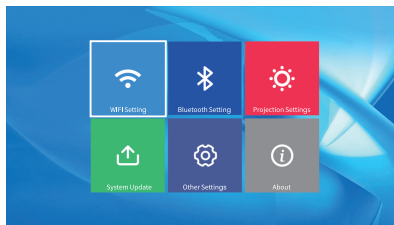
## 2. HD Connection

This option is for connecting a device with an HDMI output port.




## WIFI CONNECTION

Go to Homepage > Settings  > WIFI Setting to connect the projector to your router's WiFi.

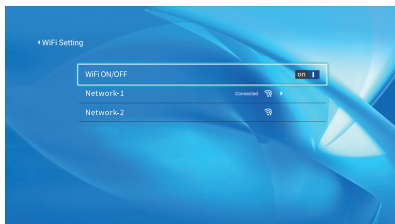


# SCREEN MIRRORING

## For iOS System

Step 1: Select  on the upper right corner of the Homepage, then enter the **Settings** interface and select **WiFi Setting**.

Step 2: Press OK to turn on the WiFi switch of the projector and connect the projector to your router's WiFi.



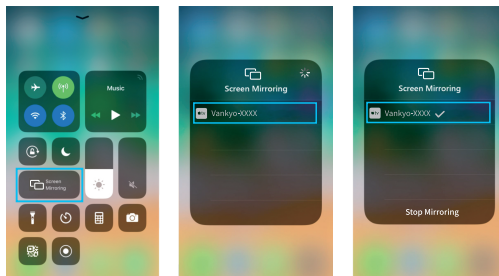
Step 3: Enter WiFi settings of your iOS device and connect it to the same WiFi.

Step 4: Go to Homepage > iOS Cast to enter the following interface.



**Step 5:** Activate Screen Mirroring/AirPlay Mirroring on your iOS device and search for the projector.

**Step 6:** Select Vankyo-XXXX from the searching list to connect.

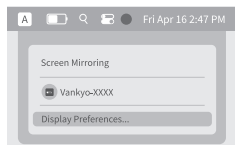
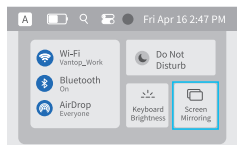


**Step 7:** The contents on your iOS device will be mirrored to the wall/screen.

**Tip:**

To activate screen mirroring function of your **MacBook**, please follow the below steps:

- 1 Connect your **MacBook** and projector to the same WiFi.
- 2 Click **Control Center** icon in the menu bar at the top of the Mac screen.
- 3 Click **Screen Mirroring** to search for the projector.
- 4 Select **Vankyo-XXXX** to connect.



## For Android System

To activate this function, please make sure your Android device supports **Multi-screen/ Wireless display/ Smart View**. Names may differ from one Android device to another.

**Step 1:** Turn ON the WiFi switch in your Android device.

**Note:**

Successful WiFi connection is not a must, but please make sure the WiFi switch on your Android device is ON.

**Step 2:** Go to **Homepage > Miracast** to enter the following interface.



**Step 3:** Activate **Multi-screen/ Wireless display/ Smart View** function on your Android device and search for the projector.

**Step 4:** Select **Vankyo-XXXX** from the searching list to connect.

**Step 5:** The contents on your Android device will be mirrored to the wall/screen.

**Notes:**

- 1 The fluency of screen mirroring will be affected by the network environment. A bandwidth of 100Mbit or more is recommended when using screen mirroring.



- ② Make sure your mobile device is close to the projector when using wireless connection. A distance within 3ft is recommended.
- ③ Some mobile devices may not support screen mirroring due to the compatibility.
- ④ Due to copyright restrictions of Hulu, Netflix, and similar services, the copyrighted contents on these streaming services CAN NOT be mirrored or cast.

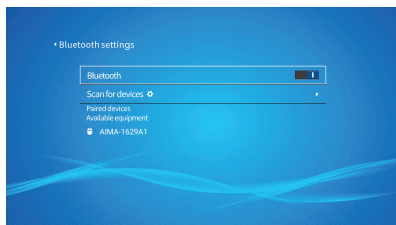
## BLUETOOTH CONNECTION

### 1. Connect to an External Bluetooth Speaker

Except for the wired 3.5mm audio output port connection, you can also connect a Bluetooth speaker or Bluetooth headphones to this projector via the Bluetooth connection.

**Step 1:** Turn on your Bluetooth device and make it ready for a Bluetooth connection.

**Step 2:** Go to **Homepage > Settings**  **> Bluetooth Setting** to turn on the Bluetooth and search for available Bluetooth devices. Afterward, select your Bluetooth device and pair it with the projector.



### IMPORTANT:

- 1 Compared with the wired connection to a speaker, BT wireless connection spends more time processing digital audio data, converting said data to an audio signal, and streaming the signal. There may be a delay or slight lag on audio due to signal interference.

As a result, the sound on the speaker may not be in sync with the image on the projector, especially when you are using wireless screen mirroring with WiFi and BT wireless connection at the same time.

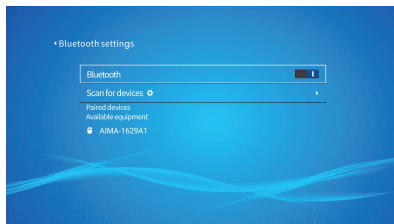
**If you are experiencing this situation, please check the following options to improve audio quality:**

- \* Instead of using wireless screen mirroring with WiFi and BT wireless connection at the same time, we recommend using wired screen mirroring and BT connection or using HD connection via the provided HD cable and BT connection simultaneously. If you still want to use wireless screen mirroring, it is recommended to output the audio via a wired speaker.
  - \* Move your BT device closer to the projector.
  - \* Keep the projector and your BT device away from other BT devices to avoid interference.
  - \* You may be able to adjust the latency (Lip Sync) on your device which is playing the video. The way to adjust the latency varies with different devices; please consult it from the device manufacturer.
- 2 Due to the compatibility issue between BT speakers/headphones and the projector, few BT devices may not be paired with the projector via BT wireless connection. Please contact us at [support@ivankyo.com](mailto:support@ivankyo.com) for further assistance.

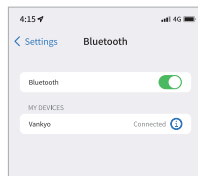
## 2. Use as a Bluetooth Speaker

You can connect your mobile device to this projector via a Bluetooth connection and use it as Bluetooth speaker.

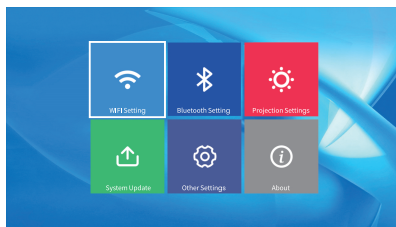
**Step 1:** Go to Homepage > Settings  > **Bluetooth Setting** to turn on the Bluetooth.



**Step 2:** Go to the Bluetooth setting of your mobile device to turn on the Bluetooth, then search for **Vankyo** from the search list and pair the mobile device with the projector.



# SETTINGS



## WiFi Setting:

Connect the projector to a working WiFi network.

## Bluetooth Setting:

Connect the projector to an external Bluetooth speaker or headphones.

## Projection Settings:

1. Change **Projection Mode** among **Front-Desktop**, **Rear-Desktop**, **Front-Ceiling**, and **Rear-Ceiling**.
2. **Keystone Advanced**: Correct the Keystone manually.
3. **Digital Zoom**: change the image size from 50% to 100%.

## System Update:

1. **Online Update**: Update the firmware version online when a new version is available.
2. **Restore Factory**: Restore the projector to the factory settings.

## Other Settings:

1. **Boot Source Options**: Choose **HDMI** or **Off** as the initial input source for your projector's startup.
2. **Power On Option**:
  - Direct**: the projector will directly power on when you plug its power cord into an electrical outlet;

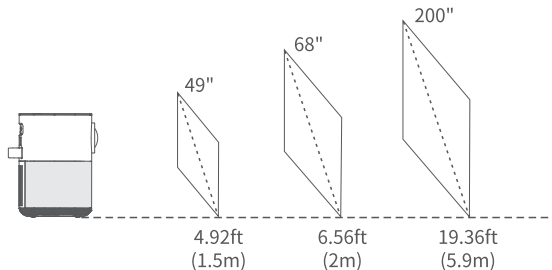
**Standby:** you need to press the Power button to turn the projector on when you plug its power cord into an electrical outlet.

3. **Language Setting:** Select a language for the projector.
4. **Scheduled Shutdown:** Set the time duration for the projector to shut down automatically. Options include **Off**, **10 mins**, **20 mins**, **30 mins**, **60 mins** and **120 mins**.
5. **Screen saver waiting time:** Set the time duration for the projector to activate the screen saver in case of inactivity. Options include **Never**, **1 minute**, **5 minutes**, and **10 minutes**.

### About

Check the **System Version**, **Android Version**, **Memory**, **ROM**, and **MAC Address** of the projector.

## PROJECTION DISTANCE & SIZE



\* The recommended projection distance varies with different projection contents. Please adjust the distance between the wall/screen and the projector as needed.

\* Ambient darkness will improve the clarity of the projected images.

## SPECIFICATION

Display Technology	LCD	Light Source	LED
Resolution	Native 1920 X 1080	Input Signal	576i/576P/720i/720P/1080i/1080P/4K
Installation Type	Front/Rear/Ceiling	Aspect Ratio	16:9 / 4:3 / Auto
Focus	Manual (Electric)	Keystone	Manual (Electric)
Speaker	3W/4ohm x2	Power Supply	AC 100-240V 50/60Hz 95W
Unit Dimension	9.05*6.42*5.91inches (230*163*150mm)	Unit Net Weight	3.95lbs (1.79kg)
Ports	HDMI Input x 1 / USB Input x 1 / Audio Output x 1		

## TROUBLESHOOTING GUIDE

- 1 The copyrighted contents from Hulu, Netflix, and similar services can not be mirrored or cast.  
\* Due to the copyright restriction from Hulu, Netflix, and similar services, the copyrighted contents CAN NOT be mirrored or cast.
- 2 What should I do if I want to watch the copyrighted contents from Hulu, Netflix, and similar services via the projector?  
\* Please prepare a Fire TV stick , Roku stick or Chromecast™ (not included), then connect it to the projector.

### 3 Blurry image

- \* Adjust the focus ring/keystone.
- \* Projector and screen/wall must be in the effective distance.

### 4 Remote unresponsive

- \* Make sure the remote points at IR receiver directly.
- \* Do not cover the IR receiver.
- \* Try a new pair of AAA batteries.

### 5 Upside down images

- \* Go to Homepage > Settings  > Projection Settings > Projection Mode to flip the projection image.

### 6 Factory reset

- \* Go to Homepage > Settings  > System Update > Restore Factory to restore the projector to default settings.

## FCC Statement

Any Changes or modifications not expressly approved by the party responsible for compliance could void the user's authority to operate the equipment. This device complies with part 15 of the FCC Rules. Operation is subject to the following two conditions:

- (1) This device may not cause harmful interference, and
- (2) this device must accept any interference received, including interference that may cause undesired operation.

**NOTE:** This equipment has been tested and found to comply with the limits for a Class B digital device, pursuant to part 15 of the FCC Rules. These limits are designed to provide reasonable protection against harmful interference in a residential installation. This equipment generates, uses and can radiate radio frequency energy and, if not installed and used in accordance with the instructions, may cause harmful interference to radio communications. However, there is no guarantee that interference will not occur in a particular installation. If this equipment does cause harmful interference to radio or television reception, which can be determined by turning the equipment off and on, the user is encouraged to try to correct the interference by one or more of the following measures:

- Reorient or relocate the receiving antenna.
- Increase the separation between the equipment and receiver.
- Connect the equipment into an outlet on a circuit different from that to which the receiver is connected.
- Consult the dealer or an experienced radio/TV technician for help.

This equipment complies with FCC radiation exposure limits set forth for an uncontrolled environment. This equipment should be installed and operated with minimum distance 20cm between the radiator& your body.

This transmitter must not be co-located or operating in conjunction with any other antenna or transmitter.