



**ECHOMASTER**  
**PRO**

# UNIVERSAL SIDE BLIND SPOT SYSTEM

## OEM-GRADE, WITH AUDIBLE & VISUAL ALERTS

Adding side blind spot sensors can improve driver awareness, creating a safer and more informed driving experience.

### PBS-MW01



Get notified when a vehicle enters into your side blind spots. Triggered by your turn signals, advanced microwave radar technology identifies moving objects in your side blind spots and provides visual and audible alerts. The visual alert is located within the vehicle, easily seen within the line of sight of the side view mirrors.

### KEY FEATURES

- Lane Change Alert
- Side Blind Zone Notification
- Rear Cross Traffic Alert

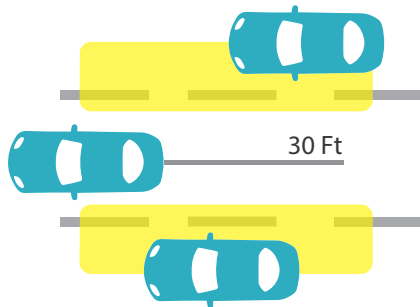
### WHAT'S INCLUDED

- 2 Sensors
- 2 LED Indicators
- Power Harness
- Control Module
- Audible Speaker
- Power On/Off Button
- Installation Tools
- Installation Manual

**Backed by a three year warranty**

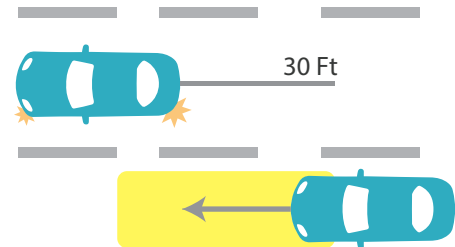
# AUDIBLE & VISUAL ALERTS TO ASSIST WITH FOUR COMMON DRIVING SITUATIONS

## BSD: BLIND SPOT DETECTION



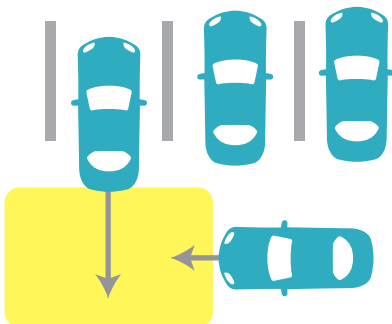
The system is automatically activated when the vehicle exceeds 15 MPH to alert you of vehicles in your side blind spot. The warning indicator lamps will illuminate when a vehicle is within the warning zone (75 Ft range in the lanes to the right and left of you), or if there is a vehicle detected approaching at high speeds resulting in an impact of less than 2 seconds. (ISO 17387 Type 3 compliant)

## LCA: LANE CHANGE ALERT



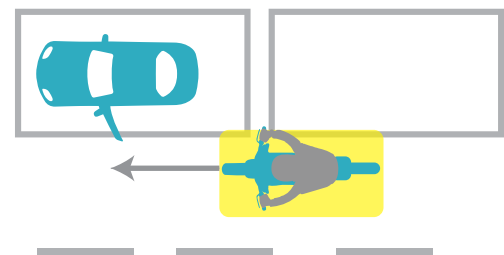
Lane Change Alert assists you with lane changes, alerting you to vehicles within your side blind spot to avoid side swipe accidents. The system is activated when you use your turn signal, and when your speed is above 15 MPH. The warning zone of the system covers left and right adjacent lanes, with an estimated impact in less than 2 seconds. An audible tone will be heard and the warning indicator lamp, with the corresponding turn signal will flash when another vehicle is within the warning zone, or if there is a vehicle detected approaching at high speeds resulting in an impact of less than 2 seconds during the lane change.

## RCTA: REAR CROSS TRAFFIC ALERT



Rear Cross Traffic Alert helps you avoid accidents when driving in reverse, such as backing out of a parking spot. The system activates when you place your vehicle in 'reverse'. An audible tone will be heard and the corresponding warning indicator lamp will flash when a pedestrian or vehicle is detected, which would result in an impact of approximately 2 seconds. The system is capable of monitoring the rear cross traffic zones up to a 60 ft range.

## DOW: DOOR OPEN WARNING



DOW is activated when under two conditions: when the engine is on and the hazards indicators are activated, and five minutes after stopping the engine. An audible tone will be heard, and the warning indicator lamp will flash with an object or vehicle is within the warning zone, or if there is a vehicle detected approaching at high speeds resulting in an impact of less than 2 seconds.