



With your inspiring rating, COSTWAY will be more consistent to offer you EASY SHOPPING EXPERIENCE, GOOD PRODUCTS and EFFICIENT SERVICE!

Mit Ihrer inspirierenden Bewertung wird COSTWAY konsistenter sein, um Ihnen EIN SCHÖNES EINKAUFSERLEBNIS, GUTE PRODUKTE und EFFIZIENTEN SERVICE zu bieten!

Avec votre évaluation inspirante, COSTWAY continuera à fournir une EXPÉRIENCE D'ACHAT PRATIQUE, des PRODUITS DE QUALITÉ et un SERVICE EFFICACE !

Con su calificación inspiradora, COSTWAY será más consistente para ofrecerle EXPERIENCIA DE COMPRA FÁCIL, BUENOS PRODUCTOS y SERVICIO EFICIENTE.

Con la tua valutazione incoraggiante, COSTWAY sarà più coerente per offrirti ESPERIENZA DI ACQUISTO FACILE, BUONI PRODOTTI e SERVIZIO EFFICIENTE!

Dzięki twojej opinii COSTWAY będzie mógł oferować jeszcze WYGODNIEJSZE ZAKUPY, LEPSZE PRODUKTY i SPRAWNIEJSZĄ OBSŁUGĘ KLIENTA.

US office: Fontana

UK office: Ipswich

DE office: FDS GmbH, Neuer Höltingbaum 36, 22143 Hamburg, Deutschland

FR office : 26 RUE DU VERTUQUET, 59960 NEUVILLE EN FERRAIN, FRANCE



USER'S MANUAL
Christmas Tree
CM23531

GB

ARTIFICIAL CHRISTMAS TREE
READ CAREFULLY, KEEP FOR FURTHER REFERENCE

Article of decoration
For indoor use only
All the diagrams are given for illustrative purposes only. There may be variations from one model to another.





Content :

Reference*	Height	Number of tree parts	Base
CM23531	5FT	4	Metal

* The reference number is indicated on the carton .
No tools are required for the assembly.

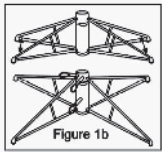
Before beginning

Check whether all parts have been delivered.
Save the carton box for storing your tree.

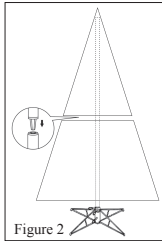
NO	A	B	C	D
PART LIST				
DESCRIPTION	TREE TOP	LOWER PART	BASE	POWER LINE AND TRANSFORMER
QTY/PCS	1PC	1PC	1PC	1PC

Assembly instructions

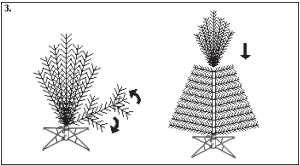
1 - Assemble the base on a stable surface, such as indicated on the cardboard packaging.
Unfold the base and insert the screws as indicated in figure 1b.



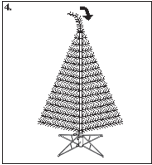
2 - Insert the lower part (Part B) and tree top (Part A) as indicated in Figure 2.



3 -Unfold one by one the branches beginning by the lower branches.



4 - Make final adjustment and trimming of the tree.



5 - Connect the lights to power line (Part D)



The tree is now ready to be decorated. Ensure that the decorations are evenly distributed on the tree.

Disassembly and storage

Remove all decorations.
Disassemble the tree in reverse order of the assembly.
For a better conservation, store the tree in its carton box in a cool dry place. Do not store when humid.

Caution

To be assembled by or under supervision of an adult.
Keep plastic bags out of reach of young children.
Keep away from fire or hot temperature. Do not light a candle on or near the tree. Do not leave lighted lighting chains unattended.
Do not overload the tree with heavy and/or too numerous decorations.
Place the tree on a plane surface in order to ensure its stability.
This tree is intended for indoor use only.
Keep an eye on young children.
Keep those information for future reference.

Made in China