

USER'S MANUAL

Steam Foot Spa Massager

EP24834BN/EP24834GR

Safety Precautions

Please read carefully all instructions before using the product. This instruction helps you to use the product safely and correctly to avoid any injury or property loss.

Please follow the relevant provisions of the safety precautions!

ATTENTION:

Avoid any potentially dangerous situation, otherwise, it may cause severe hurt or property loss.

WARNING!

1. Please beware if you are not sensitive to heat because this product has heating function. Otherwise, it may cause burns.
2. Please use this product only for a foot massage instead of other purposes. Otherwise, it may cause burns, electric shock, physical injury or health damage.
3. Please stop using it immediately if you feel pain or abnormality on your skin or body.

The following people should not use this product.

- Women during pregnancy or menstruation.
(It may cause skin problems due to hormone imbalance.)
 - People with allergies.
 - People with skin diseases, atopic dermatitis, or sensitive skin.
 - People with skin problems, including dermatitis and severe sunburn.
 - People with skin damage, eczema, swelling, etc.
 - There is a possibility of causing skin and physical discomfort.
4. Please hold the plastic shell parts of the power plug and the power cord connector parts to unplug them. (Do not touch any metal parts of the power plug.)
When performing maintenance, pull out the power plug. Otherwise, it may cause an accident or even personal injury.
 5. Please turn off the power and pull out the power plug when not using this product. Otherwise, it may cause a fire.
 6. Please do a regular clean to avoid dust collection on the power plug and the power cord connector. Moisture and other factors may cause insulation failure.
 7. Please make sure to use the power cord set dedicated to this product or special power cord components purchased from its manufacturer or repair

department for replacement when the power cord assembly is damaged.

Make sure to use the special power cord component of this product. In addition, please do not use the power cord set to any other appliances. Otherwise, it may cause a fire.

8. Please wrap the power cord around the bottom of the product when storing it. Otherwise, the power cord may be deformed and malfunction.
9. Please make sure that the operating voltage of this product conforms to its rated voltage.
Make sure that the power plug is fully inserted into the household power outlet. Otherwise, it may cause fire, electric shock, burns.
10. Please do not use this product in the following situations.
 - When the power cord or power plug is damaged or becomes hot.
 - When the plug on the household power outlet is loose.
 Do not damage, modify, excessively bend, pull or twist the power cord. Do not place heavy objects on the power cord, and do not squeeze the power cord.
Do not allow pins or dirt to adhere to the end of the power cord connector. Otherwise, it may cause fire, electric shock, short circuit, burns.
11. Please do not plug or unplug the power plug from the household power outlet with wet hands. In addition, do not use this product with wet hands. Otherwise, it may cause electric shock or short circuit.
12. Do not place the product near a stove or in direct sunlight.
Do not use during lightning strikes, and pull the power plug away from the power outlet.
13. Do not use or store this product in the bathroom or other humid places.
Avoid placing this product near water (such as near a bathtub). Other-wise, it may cause electric shock or fire due to reduced insulation.
14. Do not let children use this product. Store the product out of touch of children.
Do not let children touch the power cord. Otherwise, it may cause burns or electric shock.
15. Do not use this product near flammable objects, such as alcohol, thinner, gasoline, nail polish remover, spray and etc.. Otherwise, it may cause an explosion or fire.
16. Do not put this product into water. Please use the water tank to supply water for this product, and make sure the appliance and power switch will not get wet when adding water. Otherwise, it may cause fire, electric shock, short circuit or burns.

17. Do not drop or knock this product. If the product is damaged due to dropping or collision, please never use it again. Otherwise, it may cause electric shock or fire.
18. Do not block the steam outlet. For example, please do not insert pins, gold wire or other gold objects or foreign objects to the steam outlet. Otherwise, it may cause an electric shock.
19. Do not modify, disassemble or repair this product by yourself. For maintenance matters, please contact customer service. Otherwise, it may cause personal injury or fire due to abnormal operation.
20. Do not operate the control panel with wet hands or splash water on the control panel. Otherwise, it will cause a failure function.

ATTENTION!

1. When emptying the remaining water in the water box after use, please hold the appliance to prevent hot water from spilling on your hands. Pay attention to the high temperature of the water removal box after use. Otherwise, it may cause burns.
2. Use only distilled or purified water. Otherwise, it may cause equipment failure, and it may cause burns in severe cases.
3. When operating the power switch, do not touch the steam. The pedal must be placed correctly inside of the product before using the product, which prevents the steam spray port from scalding the skin. Do not tilt, shake or move this product during use or within 10 minutes after use. Otherwise, hot water may be splashed out, or a large amount of steam may be emitted from the steam outlet. Place the product on a flat place for use instead of holding by the hands.

4. Do not immerse the product in the water to get water, please use the water tank to add water, otherwise, it may cause an accident or product failure.

It is forbidden to install or remove the water tank during use.

During use, do not touch the steam outlet or peep into the steam outlet. Though the power is turned off, hot steam will still be emitted (about 1 minute). Therefore, please do not approach the steam outlet.

Except for cleaning, do not shake the product main body when the appliance is filled with water. Do not drain water from the steam outlet. Otherwise, once water droplets accumulated at the steam outlet, hot water may be spilled when the power is turned on. Therefore, it may cause burns.

- Do not pour hot water above 50 °C (122 °F) to avoid scalding the skin and damaging the product.

- Do not use it for therapeutic purposes.
- This product is limited to one person, please do not let two or more people use it at the same time.
- Do not use this product while drunk or unwell.
- Do not use immediately after meals to avoid discomfort.
- Do not wear ornaments on the feet when using the product.
- Do stop using it immediately and consult a doctor if you feel any discomfort during the use.
- Do not fall asleep while the product is working.
- It is recommended to use 30 ~ 40 minutes each time.
- Do not sit on the product to avoid injury or damage to the product.
- In winter, please empty the water inside of the product after use to avoid freezing the parts.
- The product should be cleaned immediately after use to avoid skin disease infection when used by others.
- Do not drag the product on the ground or pull the power cord to move the product, which may damage the product.

This product should not be used by people with physical, sensory or mental disabilities, or those with inexperience and knowledge (including children). A guardian who is responsible for the user's safety must supervise and guide the use of this product. Please prevent children from treating this product as a toy, which may cause danger.

- Please properly dispose of the packaging bag of this product to avoid accidents such as suffocation of infants and young children. Please place it out of reach of children.
- This product should be cleaned after use to avoid the accumulation of grease and other residues.

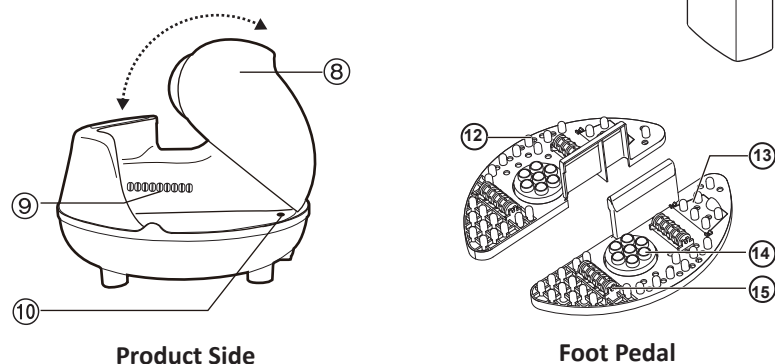
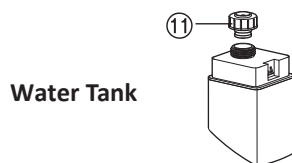
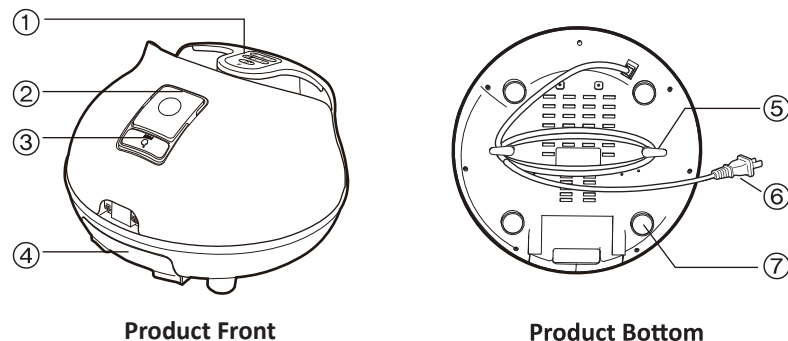
Warning about skin:

- Excessive use may damage the skin.

In the beginning, this product can only be used once a day, 2 to 3 times a week. After about a month, this product can be used once a day. Please adjust the frequency and time of use according to your skin condition.

- If skin problems occur while using the product, please stop using it.
- Basic skincare is required after using the product. If you do not do skincare after using it, it may cause moisture in the skin to evaporate easily, resulting in dry skin.

Product Parts



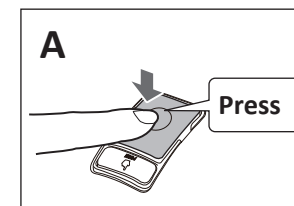
- | | | |
|-----------------------|------------------|--------------------------|
| ① Control panel | ⑥ Power plug | ⑪ Water tank cover |
| ② Water tank | ⑦ Soft foot pad | ⑫ Automatic acupuncture |
| ③ Drain key | ⑧ Flexible cover | ⑬ Foot bath bag position |
| ④ Waste water box | ⑨ Steam outlet | ⑭ Electric roller |
| ⑤ Wire storage device | ⑩ Water leak | ⑮ Automatic roller |

This product has undergone a strict water operation test before packaging. There may have little water droplets in the appliance, which will not cause any health problems.

Preparation

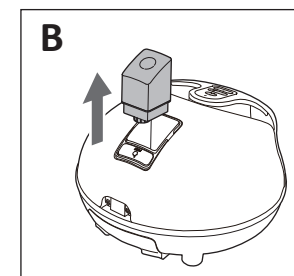
1. Place the product on a flat surface.

- When using, place the body on a flat, solid surface such as the floor.
- When the product body is tilted, the water in the water tank cannot supply water to the product, therefore, steam cannot be released.



2. Take out the water tank from the product.

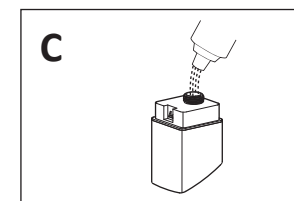
- Press firmly on the water tank (image A), and when it pops out, pull out the water tank (image B).



3. Turn and open the water tank cover.

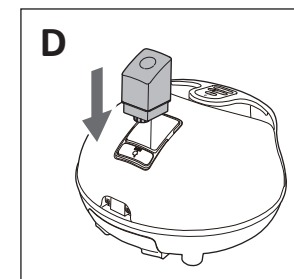
4. Pour water into the water tank (image C), and then tighten the water tank cover.

- When filling the water tank, the steam lasts about 35 minutes.



5. Install the water tank to the product (image D).

- Put the water tank into the product body until it has a click sound.
- When the water tank is installed into the product body, it will supply water for the product and the water in the water tank will decrease.



Attention!

- Do not add water repeatedly to the appliance. Add water until the water indicator flashes.
- Do not let foreign objects such as dust or dander into the water tank.

Use only distilled or purified water.

Due to different water quality, it may shorten the lifespan of this product. Therefore, we recommend to use distilled or purified water. They are generally available in supermarkets.

The following types of water cannot be used because they contain high minerals.

- Tap water
- Geothermal water
- Groundwater
- Mineral water
- Acidic water
- Ionized alkaline water

Do not incorporate any other substances.

Do not mix any other substances into the water, such as lotion, aromatic oil, etc.. Otherwise, it may cause burns, malfunction or shorten the lifespan of the product.

How to use**1. Insert the power plug of the product into a household power outlet.**

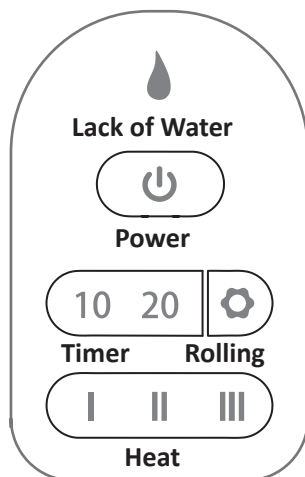
- When the amount of remaining water is insufficient, the steam release method will change. This is not a malfunction.
- If the water in the water tank is used out, steam will be stopped. Please add water in time. Please unplug the power plug if not in use.

2. Press the power button on the operation panel to start the massage.

- This product is controlled by touch keys, and can be operated by touching the position of each symbol on the keys (except the water indicator).

⚠ ATTENTION!

- Do not hold down the buttons for a long time to avoid malfunctions.
- Do not operate the control panel with wet hands or splash water on the control panel, otherwise it will cause a fail function.

**Power Button**

Startup: Press it to turn on the product in standby mode. The default setting is [Rolling Massage-Low Level] [Heat -Low Level] [Timer - 10 minutes]; The corresponding indicator in the panel will be on.

Stop: Press it to turn off the machine during working mode; When the timer expires, all massage actions and heating functions will be stopped and enter into standby mode.

Heat Button

There are three levels heat temperature to choose, which can adjust the suitable temperature. Pressing different buttons to choose desire temperature, and the corresponding light indicator is on.

(The fan continues to work for 30 seconds after turning off the heat function)

Rolling Button

The default is low-speed rolling massage speed with green light indicator is on; press the button again to turn the massage speed to high speed, the red light is on; press the button again, the rolling massage function stops and the two-color light turns off.

Timer Button

The default time is 10 minutes. During the timing, press the corresponding 10 minutes or 20 minutes button, and the time will be re-timed. When the time expires, the product is in the standby condition.

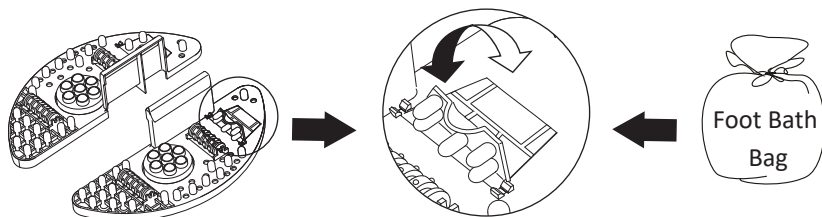
Lack of Water Indicator

When the water tank is lack of water, the heat function cannot be turned on and the buzzer sounds to remind of adding water. The indicator of water will flash 30 seconds and then be off.

- When the amount of remaining water is insufficient, the steam release method will change. This is not a malfunction.
- If the water in the water tank is used out, steam will be stopped. Please add water in time. Please unplug the power plug if not in use.

Foot bath bag

When using a foot bath bag, please open the cover of the foot bath bag position, and then place the bundled foot bath bag in the box.



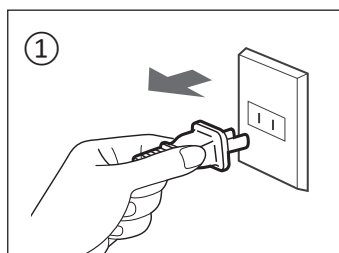
! ATTENTION!

- In order to prevent the solid materials from blocking the pipe, be sure to use a bag or a hand-tightened bath bag to avoid blocking the leak.
- After use, please take out the bath bag and clean the foot pedal.

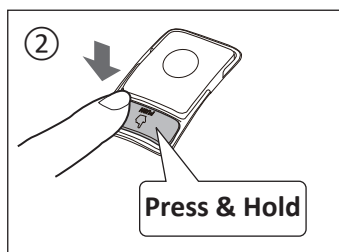
After use

1. Press the power button on the control panel to turn off all functions.

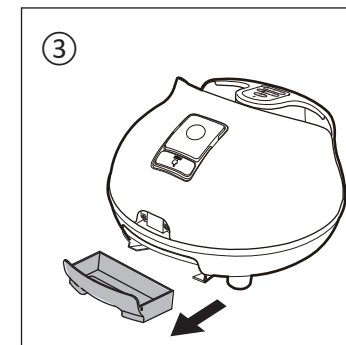
2. Unplug the power plug from the household power socket (image ①).



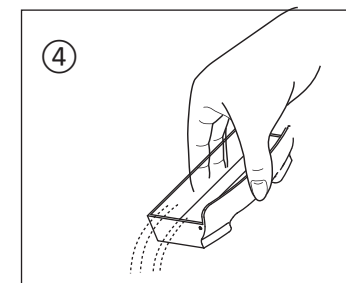
3. Press and hold the drain key (image ②) to drain the water in the water tank.



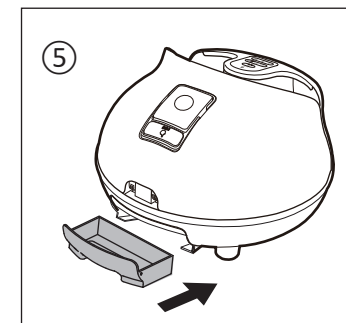
4. Pull out the waste water box from the product (image ③), and pour out the remaining water. Please pour out the remaining water in the water tank to ensure the product is clean. Otherwise, water marks or odors may be generated. While pressing the drain key, pay attention to the water volume of the waste water box to prevent overflow.



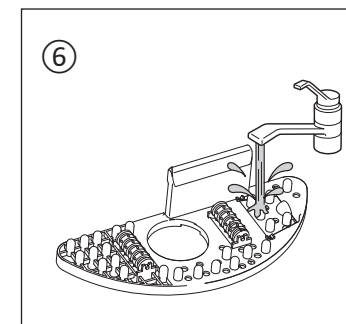
5. Pour out the water in the waste water box (image ④). Otherwise, water marks or odors may be generated. When pouring water, hold the waste water box and avoid contact with hot water, otherwise, it may cause burns.



6. Install the waste water box (image ⑤). Push the waste water box into the product until it clicks.



7. Clean the foot pedal (image ⑥). Take the foot pedal out of the product and wash it with clean water.



8. Wipe the water above the product body. When not using the product for a long time (a few weeks or more time), the water in the water tank and the product body should be completely removed. Store it after the product body is sufficiently dry.

Clean

Clean the inside of the product

- Clean once a month.
- In order to remove and prevent scale deposits, the appliance should be allowed to cool for at least 10 minutes after use, and then cleaned according to the following steps.

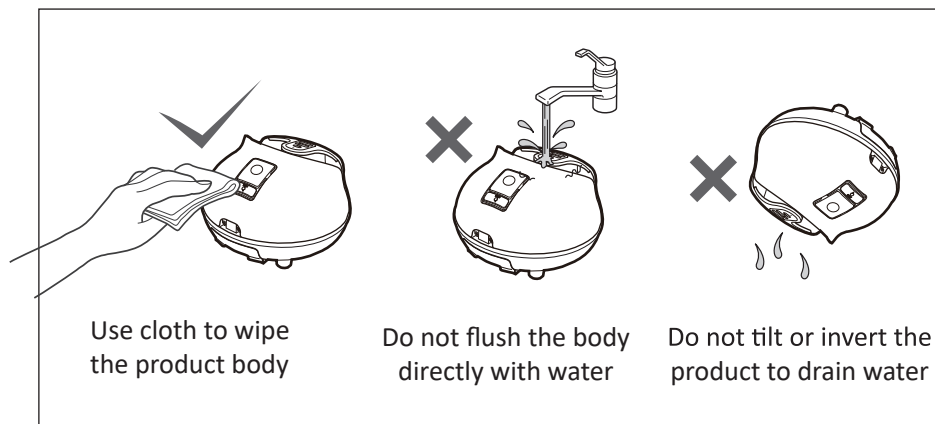
Wipe the water from the body and water tank.

- Even after draining, there will still be remaining water in the appliance. This will not cause hygiene problems because the water will be boiled when the next time use.

Clean the product body

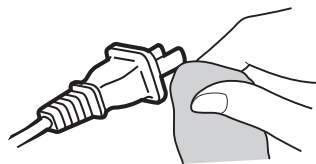
Do not wash or soak the product body in water.

- Use a cloth dampened with soapy water to wipe the product body.
- Never use alcohol, thinner, benzine or nail polish remover. Those material may cause product malfunction or cracking or discoloration.



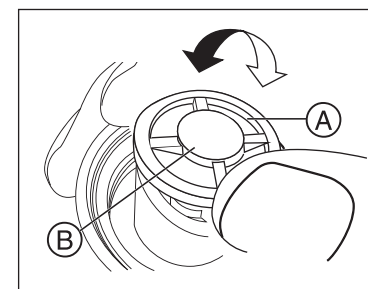
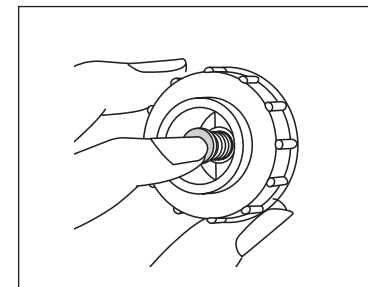
Clean the power cord set

- Clean once a month.
- Unplug the power plug from the household power outlet, and wipe off dust, etc. with a dry cloth.



What if the sealing ring of the water tank cap is off

1. Put the sealing column into the spring, and push the index finger into the central part of the water filling cap.
2. Gently press the outer edge of the water-filling cap seal(A), find the recessed hole under the water-filling seal ring(B), keep the sealing column floating, and insert the seal ring to make the recessed holes match.



Specification

Name	Steam Foot Spa Massager
Model	EP24834
Rated Voltage	110V~ 60Hz
Rated Power	450W
Timer	10/20 min
Steam Temperature	appr. 45°C (113 °F)

This product is only for home use.

FAQ

Problem	Possible Reason	Solution
Steam cannot use	The water tank is lack of water	Fulfill the water tank and install correctly
Product cannot turn on	Power plug is not inserted properly	Check and insert the power plug
	The power button is not on	Press the power button
Product stopped working suddenly	Power off	Check the connection of power plug
	Timer expires	Press the power button and reset time

If above treatment did not solve the problem, please contact customer service.

Emergency treatment

If any abnormal occurs (scorched smell, etc.), stop using the product immediately and unplug the power plug.

- If you continue to use it in an abnormal condition, it may cause fire and electric shock due to heat, etc., please contact the customer service immediately.
- If the red indicator light of the power supply stays on for more than 3 seconds, the product automatically enters the shutdown condition. This is an abnormality in the appliance. Please stop using it immediately, unplug the power plug, and contact our customer service.