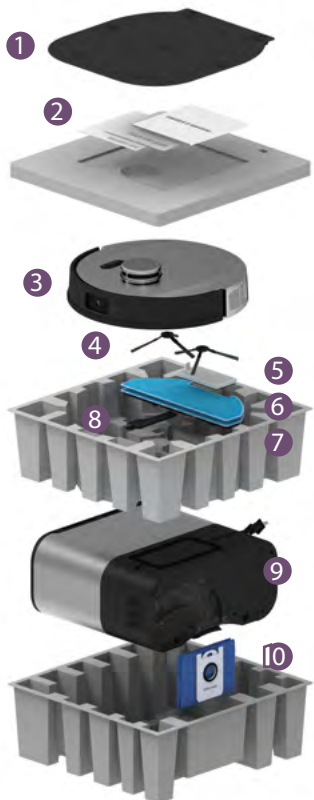


QUICK START GUIDE

Box Contents



- 1 Charging Bed
- 2 Owner's Manual
- 3 UltraVision
- 4 Side Brush (2)
- 5 Filter
- 6 Microfiber Mop Cloth (2)
- 7 Mop Attachment
- 8 Cleaning Tool
- 9 Self-emptying Charging Station
- 10 Disposable Dust Bag

Getting Started



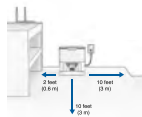
Scan for a step-by-step Video Guide.

1 Prepare the Self-emptying Charging Station

Mount the charging station over the charging bed sockets.



Place the charging station on a hard, flat surface, away from edges & stairs, with plenty of room around it. Plug it into the outlet.



2 Prepare UltraVision for his first clean

Remove the protective pieces from UltraVision and his bumper.



Place the side brush over the empty socket on UltraVision. Press down to click and lock.



Press and hold the GO button until the screen lights up.



Press the CHARGE button on UltraVision to send him to his charging station.



Or, to charge UltraVision manually, carefully align the metal nodes on UltraVision's back against the charging plates on the station.



bObsweep App



Scan for a step-by-step Video Guide.

1 Prepare for Wi-Fi Connection

Make sure your phone is connected to a **2.4GHz Wi-Fi** network.

- ✓ 2.4GHz NETWORK
- ✓ BLUETOOTH
- ✓ LOCATION SERVICES

Turn on your phone's: **Bluetooth Location Services**

Turn off: **Wi-Fi Calling**

Bring UltraVision and your mobile phone into the same room as the router/modem.



2 Connect UltraVision to Wi-Fi

Download the bObsweep app on the Google Play store or the App Store.



Create account and Log in to the bObsweep App.

If you are going to use Alexa voice commands with UltraVision, enable the **bObsweep** skill on the Alexa App.



Open the bObsweep App, Add Model, and select '**UltraVision**' from the list of models.



Follow the step by step instructions on the bObsweep App to connect to Wi-Fi.

If prompted, give the bObsweep App access to your location, "Allow While Using App", and, "Allow bObsweep to find nearby devices", "Allow local network permission".

Quick Tips



Scan for a step-by-step Video Guide.

* Self-emptying

By default, every time UltraVision docks, a short but loud vacuuming process empties his bin into his station's disposable bag.



You can change the frequency via the App. However, if the bin gets too packed, its contents cannot be vacuumed out. If you haven't recently vacuumed, allow UltraVision to self-empty frequently, so the bin isn't too full for air's passage.



Scan for a step-by-step Video Guide.

* Mapping

UltraVision constantly updates his map while he cleans ("Active Map").

You can save the map. UltraVision can hold up to 3 Saved Maps, for 3 different floors / environments.

Tap on any Saved Map and hit "add" to make it active for UltraVision to initiate with.

Before moving UltraVision to a new floor:

1. Save the map of the current floor.
2. Delete the "Active Map" so UltraVision creates a fresh map for the new floor.
3. Save the map of the new floor.

If UltraVision does not cover the entire floor in one charge, go to Settings and toggle on Auto-Resume. UltraVision resumes where he left off, after charging.

Scan for more how-to videos and instruction guides:



bobsweep.com/ultravision-support