

Roland



TRI-CAPTURE

USB Audio Capture

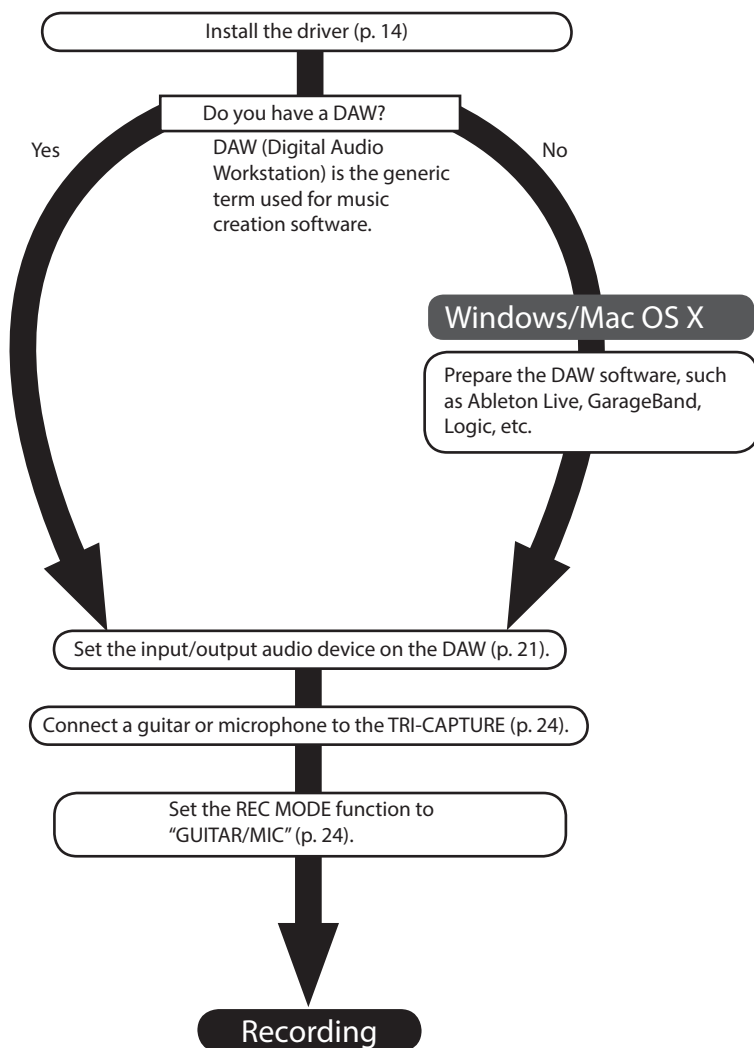
Owner's Manual

For the following languages, a PDF version of the Owner's Manual can be found on the CD-ROM.

Deutsch, Français, Italiano, Español, Português, Nederlands



Flowchart for recording with the TRI-CAPTURE





USING THE UNIT SAFETY




Before using this unit, carefully read the sections entitled: “USING THE UNIT SAFELY” and “IMPORTANT NOTES” (p. 3; p. 5). These sections provide important information concerning proper operation of the unit. Additionally, in order to feel assured that you have gained a good grasp of every feature provided by your new unit, the Owner’s Manual should be read in its entirety. The manual should be saved and kept on hand as a convenient reference.

INSTRUCTIONS FOR THE PREVENTION OF FIRE, ELECTRIC SHOCK, OR INJURY TO PERSONS

About ⚠ WARNING and ⚠ CAUTION Notices

 WARNING	Used for instructions intended to alert the user to the risk of death or severe injury should the unit be used improperly.
 CAUTION	Used for instructions intended to alert the user to the risk of injury or material damage should the unit be used improperly. * Material damage refers to damage or other adverse effects caused with respect to the home and all its furnishings, as well to domestic animals or pets.

About the Symbols

	The ⚠ symbol alerts the user to important instructions or warnings. The specific meaning of the symbol is determined by the design contained within the triangle. In the case of the symbol at left, it is used for general cautions, warnings, or alerts to danger.
	The ⚡ symbol alerts the user to items that must never be carried out (are forbidden). The specific thing that must not be done is indicated by the design contained within the circle. In the case of the symbol at left, it means that the unit must never be disassembled.
	The ⚡ symbol alerts the user to things that must be carried out (are forbidden). The specific thing that must be done is indicated by the design contained within the circle. In the case of the symbol at left, it means that the power-cord plug must be unplugged from the outlet.

ALWAYS OBSERVE THE FOLLOWING

WARNING

Do not open or perform any internal modifications on the unit.



Do not attempt to repair the unit, or replace parts within it (except when this manual provides specific instructions directing you to do so). Refer all servicing to your retailer, the nearest Roland Service Center, or an authorized Roland distributor, as listed on the “Information” page.



WARNING

Never install the unit in any of the following locations.

- Subject to temperature extremes (e.g., direct sunlight in an enclosed vehicle, near a heating duct, on top of heat-generating equipment); or are
- Damp (e.g., baths, washrooms, on wet floors); or are
- Exposed to steam or smoke; or are
- Subject to salt exposure; or are
- Humid; or are
- Exposed to rain; or are
- Dusty or sandy; or are
- Subject to high levels of vibration and shakiness.



Make sure you always have the unit placed so it is level and sure to remain stable. Never place it on stands that could wobble, or on inclined surfaces.



USING THE UNIT SAFETY

WARNING

This unit, either alone or in combination with an amplifier and headphones or speakers, may be capable of producing sound levels that could cause permanent hearing loss. Do not operate for a long period of time at a high volume level, or at a level that is uncomfortable. If you experience any hearing loss or ringing in the ears, you should immediately stop using the unit, and consult an audiologist.



Do not place containers containing liquid on this product. Never allow foreign objects (e.g., flammable objects, coins, wires) or liquids (e.g., water or juice) to enter this product. Doing so may cause short circuits, faulty operation, or other malfunctions.



Immediately disconnect the USB cable, and request servicing by your retailer, the nearest Roland Service Center, or an authorized Roland distributor, as listed on the "Information" page when:



- Objects have fallen into, or liquid has been spilled onto the unit; or
- If smoke or unusual odor occurs
- The unit has been exposed to rain (or otherwise has become wet); or
- The unit does not appear to operate normally or exhibits a marked change in performance.

In households with small children, an adult should provide supervision until the child is capable of following all the rules essential for the safe operation of the unit.



Protect the unit from strong impact.
(Do not drop it!)



DO NOT play a CD-ROM disc on a conventional audio CD player. The resulting sound may be of a level that could cause permanent hearing loss. Damage to speakers or other system components may result.



CAUTION

Try to prevent cords and cables from becoming entangled. Also, all cords and cables should be placed so they are out of the reach of children.



Never climb on top of, nor place heavy objects on the unit.



Disconnect all cords coming from external devices before moving the unit.



Always turn the phantom power off when connecting any device other than condenser microphones that require phantom power. You risk causing damage if you mistakenly supply phantom power to dynamic microphones, audio playback devices, or other devices that don't require such power. Be sure to check the specifications of any microphone you intend to use by referring to the manual that came with it.



(This instrument's phantom power: 48 V DC, 10 mA Max)

IMPORTANT NOTES

Power Supply

- Before connecting this unit to other devices, turn off the power to all units. This will help prevent malfunctions and/or damage to speakers or other devices.

Placement

- Using the unit near power amplifiers (or other equipment containing large power transformers) may induce hum. To alleviate the problem, change the orientation of this unit; or move it farther away from the source of interference.
- This device may interfere with radio and television reception. Do not use this device in the vicinity of such receivers.
- Noise may be produced if wireless communications devices, such as cell phones, are operated in the vicinity of this unit. Such noise could occur when receiving or initiating a call, or while conversing. Should you experience such problems, you should relocate such wireless devices so they are at a greater distance from this unit, or switch them off.
- Do not expose the unit to direct sunlight, place it near devices that radiate heat, leave it inside an enclosed vehicle, or otherwise subject it to temperature extremes. Excessive heat can deform or discolor the unit.
- When moved from one location to another where the temperature and/or humidity is very different, water droplets (condensation) may form inside the unit. Damage or malfunction may result if you attempt to use the unit in this condition. Therefore, before using the unit, you must allow it to stand for several hours, until the condensation has completely evaporated.
- Depending on the material and temperature of the surface on which you place the unit, its rubber feet may discolor or mar the surface. You can place a piece of felt or cloth under the rubber feet to prevent this from happening. If you do so, please make sure that the unit will not slip or move accidentally.
- Do not put anything that contains water (e.g., flower vases) on this unit. Also, avoid the use of insecticides, perfumes, alcohol, nail polish, spray cans, etc., near the unit. Swiftly wipe away any liquid that spills on the unit using a dry, soft cloth.

Maintenance

- For everyday cleaning wipe the unit with a soft, dry cloth or one that has been slightly dampened with water. To remove stubborn dirt, use a cloth impregnated with a mild, non-abrasive detergent. Afterwards, be sure to wipe the unit thoroughly with a soft, dry cloth.
- Never use benzine, thinners, alcohol or solvents of any kind, to avoid the possibility of discoloration and/or deformation.

Additional Precautions

- Use a reasonable amount of care when using the unit's buttons, sliders, or other controls; and when using its jacks and connectors. Rough handling can lead to malfunctions.
- When connecting / disconnecting all cables, grasp the connector itself—never pull on the cable. This way you will avoid causing shorts, or damage to the cable's internal elements.
- To avoid disturbing your neighbors, try to keep the unit's volume at reasonable levels. You may prefer to use headphones, so you do not need to be concerned about those around you.
- When you need to transport the unit, package it in the box (including padding) that it came in, if possible. Otherwise, you will need to use equivalent packaging materials.
- Some connection cables contain resistors. Do not use cables that incorporate resistors for connecting to this unit. The use of such cables can cause the sound level to be extremely low, or impossible to hear. For information on cable specifications, contact the manufacturer of the cable.

Handling CDs

- Avoid touching or scratching the shiny underside (encoded surface) of the disc. Damaged or dirty CD discs may not be read properly. Keep your discs clean using a commercially available CD cleaner.

IMPORTANT NOTES

- * Microsoft, Windows and Windows Vista are either registered trademarks or trademarks of Microsoft Corporation.
- * Windows® is known officially as: “Microsoft® Windows® operating system.”
- * The screen shots in this document are used in compliance with the guidelines of the Microsoft Corporation.
- * Macintosh, Mac OS are either registered trademarks or trademarks of Apple Inc.
- * ASIO is a trademark of Steinberg Media Technologies GmbH.
- * Company names and product names appearing in this document are registered trademarks or trademarks of their respective owners.
- * MMP (Moore Microprocessor Portfolio) refers to a patent portfolio concerned with microprocessor architecture, which was developed by Technology Properties Limited (TPL). Roland has licensed this technology from the TPL Group.

Copyright © 2011 ROLAND CORPORATION

All rights reserved. No part of this publication may be reproduced in any form without the written permission of ROLAND CORPORATION.

Roland is a registered trademark of Roland Corporation in the United States and/or other countries.

Contents

USING THE UNIT SAFETY	3
IMPORTANT NOTES.....	5
Contents of the Package.....	8
Panel Descriptions	10
Top Panel	10
Rear Panel.....	12
Bottom Panel.....	13
Driver Installation	14
Confirm that Sound can be Heard.....	19
How to Use	21
Input/Output Device Settings.....	21
Playing Back.....	22
Recording	23
Recording Microphone or Guitar Sound (MIC/GUITAR).....	24
Recording Microphone or Guitar Sound Along with Audio Device Sound (ALL INPUTS)	26
Record Microphone or Guitar Sound While Mixing it with Audio Data Played on a Computer (LOOP BACK)	28
Troubleshooting.....	30
Problems When Installing the Driver.....	30
Problems When Using the TRI-CAPTURE.....	31
Changing Computer Settings to Avoid Problems	36
Driver Signing Options Setting (Windows XP).....	36
Power Management Settings	37
System "Performance" Settings (Windows)	38
Setting the System Volume	39
Voice Communication Software Settings (Windows 8/Windows 7)	40
Monitoring Function Settings (Windows 8/Windows 7)	40
Reinstalling the Driver	41
Deleting the Driver	41
Advanced Driver Settings.....	43
Main Specifications.....	45
Index.....	47
Block Diagrams for REC MODE	48
MIC/GUITAR	48
ALL INPUTS.....	48
LOOP BACK.....	49

Contents of the Package

After you open the package, please check that all items are present.
(If any accessories are missing, please contact the place of purchase.)

■ TRI-CAPTURE

■ Owner's Manual

This is the document you're reading. Keep it at hand for reference when needed.

■ TRI-CAPTURE Driver CD-ROM

This CD-ROM contains the TRI-CAPTURE drivers and demo songs.

- * **Avoid touching or scratching the shiny underside (encoded surface) of a disc. Damaged or dirty discs may not be read properly. Use a commercially available CD-ROM/DVD-ROM cleaner to keep your disc clean.**

■ Ableton Live Lite Serial Number Card

The Ableton Live Lite serial number card contains a serial number that you will need when you install Ableton Live Lite. This serial number cannot be reissued. Please take care not to lose it.

For details on the installation procedure and other information, refer to <http://roland.cm/livelite>.
Please be aware that Roland does not provide support for Ableton Live Lite.

■ USB cable

Use this cable to connect the TRI-CAPTURE to the USB connector of your computer.

- * **Please use only the included USB cable. If you require a replacement due to loss or damage, please contact the nearest Roland Service center, or an authorized Roland distributor, as listed on the "Information" page.**

You'll need to provide the following items

- External amplifier, speakers, headphones, etc., for listening to the sound that is output via the TRI-CAPTURE
- Microphone, guitar, etc., for inputting audio to the TRI-CAPTURE

Panel Descriptions

Note

Do not connect the TRI-CAPTURE to the computer until the driver has been installed (p. 14).

Top Panel



1. [PHANTOM] button

Switches on or off the supply of phantom power to the XLR type jacks of the INPUT 1 (MIC) jack.

Connected equipment	[PHANTOM] button
Condenser microphone	48V
Other equipment	OFF

You must leave the [PHANTOM] button set to "OFF" unless condenser microphones requiring phantom power are connected to the XLR type jacks. Supplying phantom power to a dynamic microphone or to an audio playback device may cause malfunctions. For details on the requirements of your microphone, refer to its owner's manual.

TRI-CAPTURE's phantom power supply: DC 48 V, 10 mA maximum

2. [Hi-Z] button

Switches the impedance of the INPUT 2 (GUITAR) jack. You can select high impedance (Hi-Z) or low impedance (Lo-Z) as appropriate for the connected equipment.

Connected equipment	[Hi-Z] button
Guitar or bass	ON (High impedance)
Other equipment	OFF (Lo impedance)

3. PEAK indicators

Light up when level of the input signal is too high. Use the [INPUT 1 (MIC)], [INPUT 2 (GUITAR)], and [INPUT 3 (AUX)] knobs to adjust the input level so that a PEAK indicator does not light.

4. SIG indicators

The corresponding indicator lights up when an audio signal is input via the INPUT 1 (MIC), INPUT 2 (GUITAR), or INPUT 3 (AUX) jack.

5. [INPUT 1 (MIC)] knob, [INPUT 2 (GUITAR)] knob, [INPUT 3 (AUX)] knob

Adjust the volume of the audio signal input via the INPUT 1 (MIC), INPUT 2 (GUITAR), or INPUT 3 (AUX) jack(s).

The input volume will not be set to zero even if the [INPUT 1 (MIC)] knob is turned fully to the left. The input volume is set to zero if the [INPUT 2 (GUITAR)] or [INPUT 3 (AUX)] knob is turned fully to the left.

6. [REC MODE] button

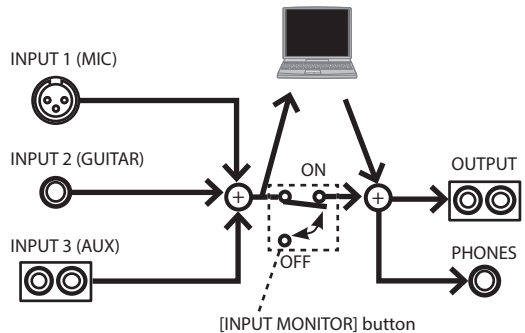
The TRI-CAPTURE has three recording modes. You can change the recording mode by pressing this button (p. 23).

7. [INPUT MONITOR] button

Sets whether to directly output the input signal.

When the [INPUT MONITOR] button is set to "ON," you can listen to the instrument's output directly without passing the audio signal through the computer.

When the [INPUT MONITOR] button is set to "OFF," the instrument's audio signal passes through the computer, therefore the sound may be delayed. When ASIO 2.0-compatible software is used, the ASIO Direct Monitor setting determines this setting.



8. [OUTPUT MUTE] button

Switches on or off output of the audio signal from the OUTPUT jack.

The audio signal is output from the PHONES jack regardless of the [OUTPUT MUTE] button setting.

9. Output level indicators

Indicate the output volume. The output level indicators work regardless of the [OUTPUT MUTE] button's setting.

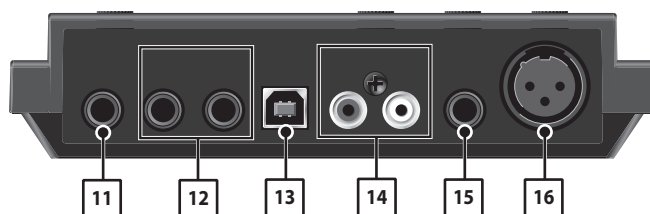
Panel Descriptions

10. [PHONES] knob

Adjusts the volume of the audio signal that is output from the PHONES jack.

- * The volume of the signals output from the OUTPUT jacks cannot be adjusted on the TRI-CAPTURE itself.

Rear Panel



11. PHONES jack

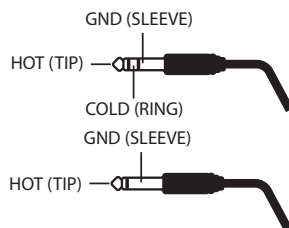
Used to connect headphones. The audio signal is output from the PHONES jack regardless of the [OUTPUT MUTE] button's setting.

12. OUTPUT jack (combined balanced TRS/unbalanced TS)

Outputs the analog audio signal.

- * Wiring diagrams for the balanced TRS type jack are shown in the illustration. Make connections only after first checking the pin outs of the other equipment you intend to connect.

An unbalanced TS type jack can also be connected.



13. USB connector

Used to connect to a computer.

Before connecting, you must install the driver (p. 14).

14. INPUT 3 (AUX) jacks

Used to connect an audio device.

Adjust the volume of the audio input signal by using the [INPUT 3 (AUX)] knob.

15. INPUT 2 (GUITAR) jack

Used to connect a guitar or bass.

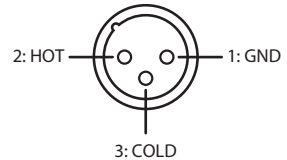
Adjust the volume of the audio input signal by using the [INPUT 2 (GUITAR)] knob.

16. INPUT 1 (MIC) jack

This is an analog audio input jack. Rated input level: -60– -30 dBu

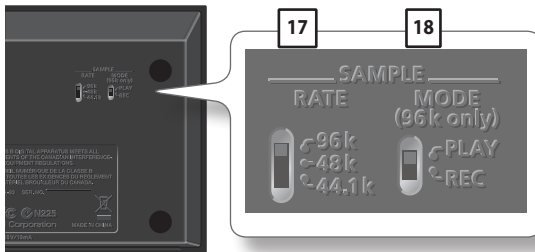
This jack can provide 48 V phantom power, allowing you to connect a phantom-powered condenser microphone. In this case, set the [PHANTOM] button to “48V.”

- * This instrument is equipped with balanced (XLR, TRS) type jacks. Wiring diagrams for these jacks are shown in the illustration. Make connections after first checking the wiring diagrams of other equipment you intend to connect.



Bottom Panel

- * When turning the unit upside-down, get a bunch of newspapers or magazines, and place them under the four corners or at both ends to prevent damage to the buttons and controls. Also, you should try to orient the unit so no buttons or controls get damaged.



17. [SAMPLE RATE] switch

Sets the sampling rate for the audio signal to be recorded or played.

When you switch the sampling rate, disconnect the USB cable that connects the TRI-CAPTURE and computer, then reconnect it.

18. [MODE] switch

Selects recording mode or playback mode when the [SAMPLE RATE] switch is set to “96k.”

When the [SAMPLE RATE] switch is set to “96k,” the TRI-CAPTURE cannot record and play audio data simultaneously. For recording, set the [MODE] switch to “REC,” and for playback, set the [MODE] switch to “PLAY.”

Driver Installation

Windows

Mac OS X

Note

Do not connect the TRI-CAPTURE to the computer until you are directed to do so.

A “driver” is software that transfers data between the TRI-CAPTURE and application software running on your computer when your computer and the TRI-CAPTURE are connected.

1. Start up the computer without the TRI-CAPTURE connected.

Disconnect all USB cables other than those for a USB keyboard and/or USB mouse (if used).

Windows

Log on to the computer with a user account that has administrator privileges.

Windows 8

Switch to the “Desktop.”

2. Exit all applications that are running.

3. Insert the included CD-ROM into the CD-ROM drive.

4. Of the following, double-click the relevant file on the included CD-ROM to start the installer.

Operating System	File
Windows	[Setup] in the [WinDriver] folder
Mac OS X	[TriCapture_USBDriver] in the [MacDriver] folder

Refer to the Roland website for the latest USB drivers and information about compatibility with the latest operating system versions.

<http://www.roland.com/>

Windows

users: continue to p. 15

Mac OS X

users: continue to p. 18

Windows

5. When a confirmation screen regarding user account control appears, click [Yes] or [Continue].
6. When "The TRI-CAPTURE Driver will be installed on your computer." appears, click [Next].
7. Click [Next] again.

Windows 8/Windows 7/Windows Vista

If a dialog box regarding Windows security appears, click [Install].

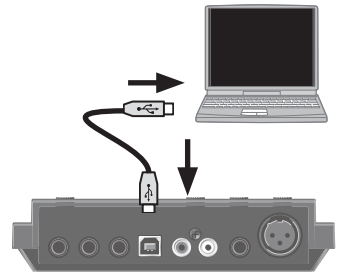
Windows XP

If the "Software Installation" dialog box appears, click [Continue] to proceed with the installation.

If you cannot proceed, click [OK] to cancel the installation. Change the settings as described in "Driver Signing Options Setting (Windows XP)" (p. 36) and try installing again.

8. When "Ready to install the driver." appears, connect the TRI-CAPTURE to the computer using the USB cable.

- * Turn down the volume on any peripheral devices before connecting the USB cable.
- * This unit is equipped with a protection circuit. A brief interval (a few seconds) after power up is required before the unit will operate normally.
- * Before switching the power on/off, always be sure to turn the volume down. Even with the volume turned down, you might hear some sound when switching the power on/off. However, this is normal and does not indicate a malfunction.
- * It may take several minutes for the driver to be installed.



Windows 8/Windows 7/Windows Vista

If other messages appear, follow the instructions on the screen. The driver will be installed automatically.


Windows XP

"Found new hardware" will appear in the lower-right corner of the screen.

Windows 8/Windows 7/Windows Vista users: continue to p. 16

Windows XP users: continue to p. 17

Windows 8/Windows 7/Windows Vista

- 
9. When “Installation has been completed.” appears, click [Close].
If the “System Settings Change” dialog box appears, click [Yes] to restart Windows.
 10. Open the “Control Panel,” click [Hardware and Sound], and then click [Sound].
If you have selected Icon view or Classic view, double-click [Sound].
 11. Click the [Playback] tab, select the TRI-CAPTURE’s [OUT], and then click [Set Default].
 12. Click [OK].

Proceed to p. 19

If you cannot select the TRI-CAPTURE, refer to “Problems When Using the TRI-CAPTURE” (p. 31).

If the TRI-CAPTURE is selected as the output device, the computer’s audio alerts will be played using the TRI-CAPTURE; they will not be heard from the computer’s speakers.

To open the Control Panel **Windows 8**

1. On the Start screen, click the Desktop.
2. Move the mouse pointer to the upper right or lower right corner of the screen to display the charms.
 - * On touch-enabled PCs, swipe from the right side of the screen to display the charms.
3. Click [Settings] and display the “Settings charms.”
4. In “Settings charms,” click [Control Panel] to open the “Control Panel.”

Windows XP

9. If a dialog box that asks whether you want to connect to Windows Update appears, select [No, not this time] and click [Next].
10. Select [Install the software automatically (Recommended)] and click [Next].



11. If the "Hardware Installation" dialog box appears, click [Continue Anyway] to proceed with the installation.
12. When "Completing the Found New Hardware Wizard" appears, click [Finish].
13. When "Installation has been completed." appears, click [Close].



If the "Change System Settings" dialog box appears, click [Yes] to restart Windows.

14. Open the "Control Panel," click [Sounds, Speech, and Audio Devices], and then click [Sounds and Audio Devices].
- If you have selected Classic view, double-click [Sounds and Audio Devices].
15. Click the [Audio] tab and select [OUT (TRI-CAPTURE)].
16. Click [OK].

Proceed to p. 19

If you cannot select the TRI-CAPTURE, refer to "Problems When Using the TRI-CAPTURE" (p. 31).

If the TRI-CAPTURE is selected as the output device, the computer's audio alerts will be played using the TRI-CAPTURE; they will not be heard from the computer's speakers.

Mac OS X

If a dialog box requesting a password appears during installation, enter a computer administrator's user name and password and click the [Install Software] button or [OK] button.

5. When "Welcome to the TRI-CAPTURE Driver installer" appears, click [Continue].
6. If the screen for selecting the installation destination appears, select the startup disk and click [Continue].
7. When the installation type appears, click [Install] or [Upgrade].
8. Click [Continue Installation].
9. When installation has finished, click [Restart] to restart the computer.

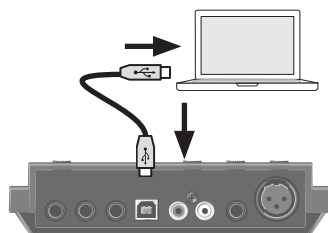
It may take some time for the computer to restart.

10. After the computer restarts, connect the TRI-CAPTURE to the computer using the USB cable.

- * Turn down the volume on any peripheral devices before connecting the USB cable.

- * This unit is equipped with a protection circuit. A brief interval (a few seconds) after power up is required before the unit will operate normally.

- * Before switching the power on/off, always be sure to turn the volume down. Even with the volume turned down, you might hear some sound when switching the power on/off. However, this is normal and does not indicate a malfunction.



11. Open "System Preferences" and click [Sound].
12. Click the [Output] tab and select [TRI-CAPTURE].
13. When you have finished making these settings, quit "System Preferences."

Proceed to p. 19

If you cannot select the TRI-CAPTURE, refer to "Problems When Using the TRI-CAPTURE" (p. 31).

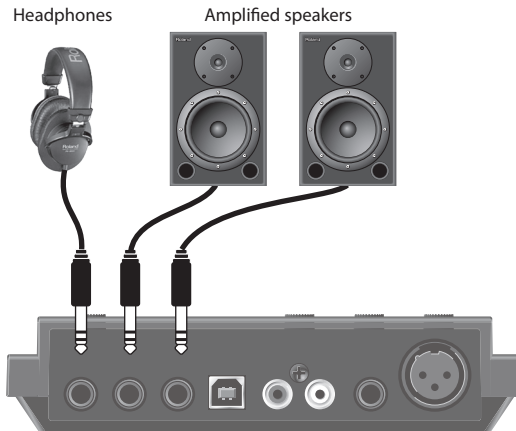
If the TRI-CAPTURE is selected as the output device, the computer's audio alerts will be played using the TRI-CAPTURE; they will not be heard from the computer's speakers.

Confirm that Sound can be Heard

Windows

Mac OS X

1. Connect the headphones or amplified speakers as shown in the figure.



- * To prevent malfunction and/or damage to speakers or other devices, always turn down the volume, and disconnect the USB cable on all devices before making any connections.
2. Open the folder named [Sample] on the included CD-ROM, and copy the file "TTears" (.mp3) to the desktop.
 3. Double-click the file "TTears" (.mp3) that has been copied to the desktop.

Windows

Windows Media Player starts.

Mac OS X

iTunes starts.

Click the playback button to play the sample file.

The software that starts and is used to play the sample file may vary depending on your computer environment. If different software starts, play the sample file as described in the owner's manual for the software you are using.

- * The copyright of content in this product (the sound waveform data, style data, accompaniment patterns, phrase data, audio loops and image data) is reserved by Roland Corporation and/or Atelier Vision Corporation.

4. Adjust the volume.

Use the TRI-CAPTURE's [PHONES] knob to adjust the volume.

- * The volume of the signals output from the OUTPUT jacks cannot be adjusted on the TRI-CAPTURE itself.**

If the sample file can be heard, the computer and TRI-CAPTURE are connected properly and the driver has been successfully installed.

If you cannot hear the sample file, refer to "Problems When Using the TRI-CAPTURE" (p. 31).

How to Use

This section explains the basic connections and settings for the TRI-CAPTURE.

Refer also to the block diagrams (p. 48).

Precautions Concerning the Use of Software

Before using any software, please note the following points.

- Connect the TRI-CAPTURE to the computer before starting the software.
- Do not disconnect the TRI-CAPTURE from the computer while the software is running. After exiting the software, disconnect the TRI-CAPTURE.
- Select the TRI-CAPTURE for your software's audio device setting.
- Match the sampling rate of the software to the setting of the [SAMPLE RATE] switch on the bottom panel.
- The TRI-CAPTURE will not operate in the Mac OS X Classic environment. Use the TRI-CAPTURE when the Classic environment is not running.

Input/Output Device Settings

To play and record audio data on your software, select the TRI-CAPTURE as the audio input/output device. For details about settings, refer to the documentation for your software.

Audio Output Device

Device name	MME, WDM/KS	ASIO	Core Audio
TRI-CAPTURE	OUT (TRI-CAPTURE)	OUT 1-2	1, 2

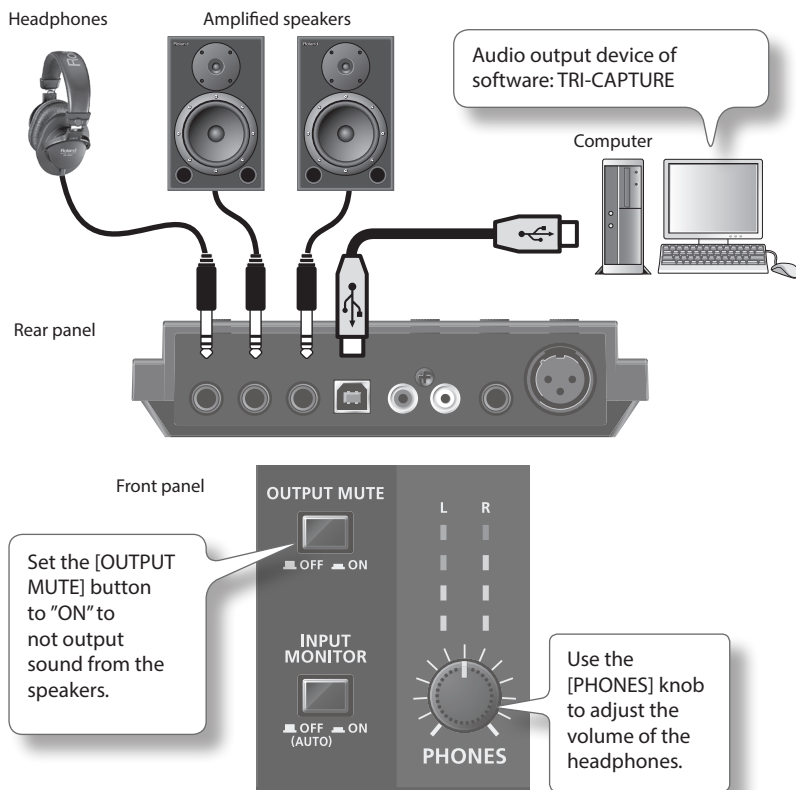
Audio Input Device

Device name	MME, WDM/KS	ASIO	Core Audio
TRI-CAPTURE	IN (TRI-CAPTURE)	IN 1-2	1, 2

Playing Back

Connect the TRI-CAPTURE to a computer using the USB cable. Audio data is transferred in both directions between the TRI-CAPTURE and computer via the USB cable.

By connecting headphones or amplified speakers as shown in the illustration, you can monitor playback from your DAW software or the sound from an instrument or audio device connected to the TRI-CAPTURE.



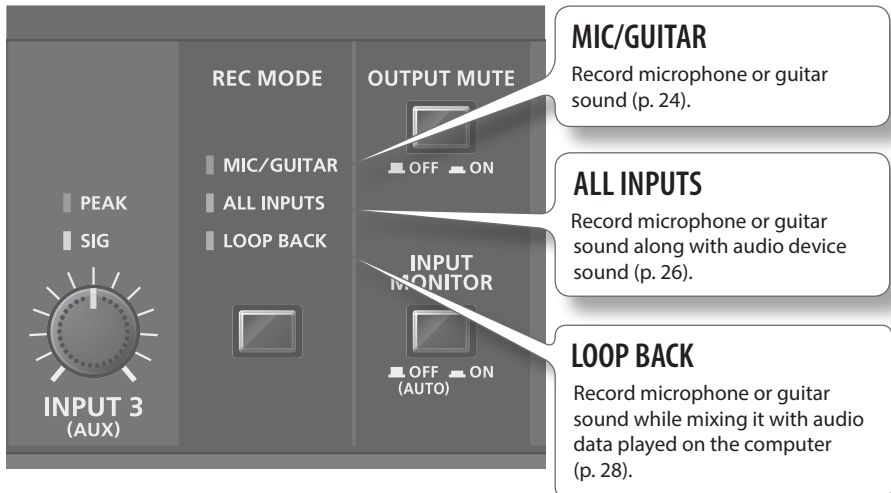
* To carry out playback at a sampling rate of 96 kHz, set the [SAMPLE RATE] switch on the bottom panel to "96k," and set the [MODE] switch on the bottom panel to "PLAY."

Recording

Using your software, you can record sound input via the INPUT 1–3 jacks. You can also record sound input to the TRI-CAPTURE while combining it with audio data played on the computer.

The TRI-CAPTURE has three recording modes. Select the mode that is appropriate for the purpose you have in mind.

Front panel



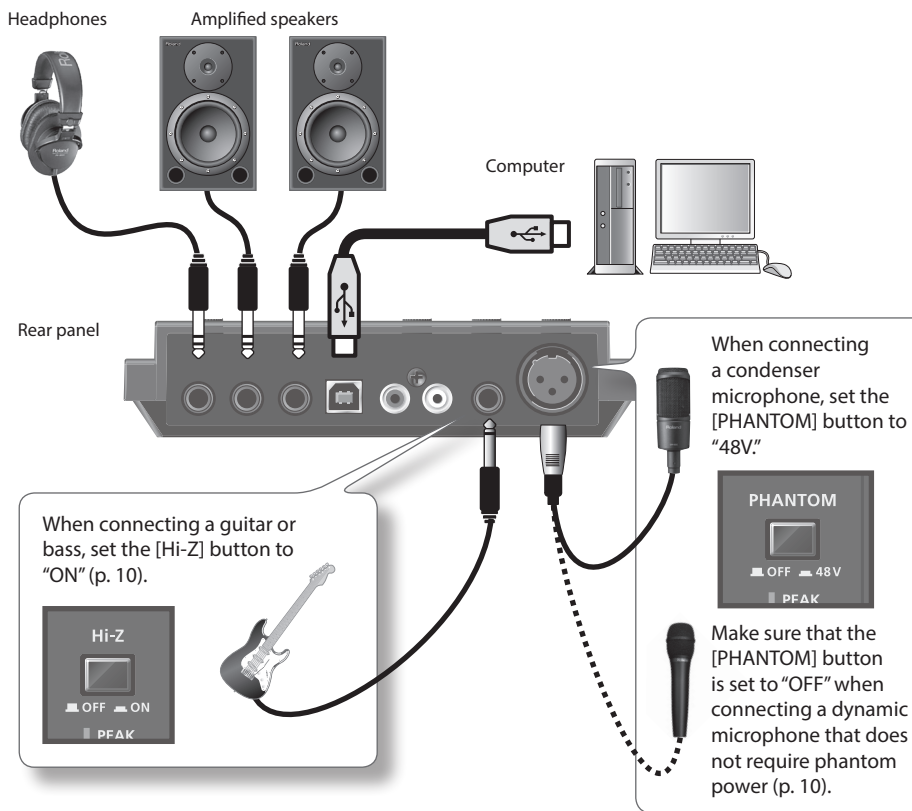
Precautions Concerning the Use of an External Audio Device

- To play an input audio signal without latency (a short period of delay between the performance and the playback), set the [INPUT MONITOR] button to "ON."
- Howling could be produced depending on the location of microphones relative to speakers. This can be remedied by:
 1. Changing the orientation of the microphone(s).
 2. Relocating microphone(s) at a greater distance from speakers.
 3. Lowering the volume levels.
 4. Setting the [OUTPUT MUTE] button to "ON."
 Mute the sound output from the speakers. Use headphones.

* To record at a sampling rate of 96 kHz, set the [SAMPLE RATE] switch on the bottom panel to "96k," and set the [MODE] switch on the bottom panel to "REC."

Recording Microphone or Guitar Sound (MIC/GUITAR)

When you set the recording mode to "MIC/GUITAR," you can record microphone and guitar sounds on each track individually.



Use the [INPUT 1 (MIC)] and [INPUT 2 (GUITAR)] knobs to adjust the input level so that the PEAK indicator does not light.

Features of the “MIC/GUITAR” Mode

- You can separately edit audio data recorded from a microphone and guitar.
By setting the input port of the track to monaural in the software, the microphone sound will be recorded on the left channel (L), and the guitar sound will be recorded on the right channel (R).
- You cannot record or monitor sound input via the INPUT 3 (AUX) jacks.
When recording sound input via the INPUT 3 (AUX) jacks, set the [REC MODE] button to “ALL INPUTS” or “LOOP BACK.”
- In “MIC/GUITAR” mode, you cannot record audio data played on the computer.
To record audio data played on the computer, set the [REC MODE] button to “LOOP BACK.”

Examples of How to Use the “MIC/GUITAR” Mode

- Recording microphone and guitar sound simultaneously on the DAW software, and editing the recorded audio data separately

Recording Microphone or Guitar Sound Along with Audio Device Sound (ALL INPUTS)

When you set the recording mode to "ALL INPUT," you can record microphone and/or guitar sound in combination with the stereo sound of an audio device.

Select the "ALL INPUT" mode when recording microphone or guitar sound with the stereo playback of the audio device.

Headphones

Amplified speakers

Computer

Rear panel

Audio device

When connecting a condenser microphone, set the [PHANTOM] button to "48V."



Make sure that the [PHANTOM] button is set to "OFF" when connecting a dynamic microphone that does not require phantom power (p. 10).

When connecting a guitar or bass, set the [Hi-Z] button to "ON" (p. 10).



Use the corresponding knob ([INPUT 1 (MIC)], [INPUT 2 (GUITAR)], or [INPUT 3 (AUX)]) to adjust the volume of the microphone, guitar, or audio device so its PEAK indicator does not light.

Features of the “ALL INPUT” Mode

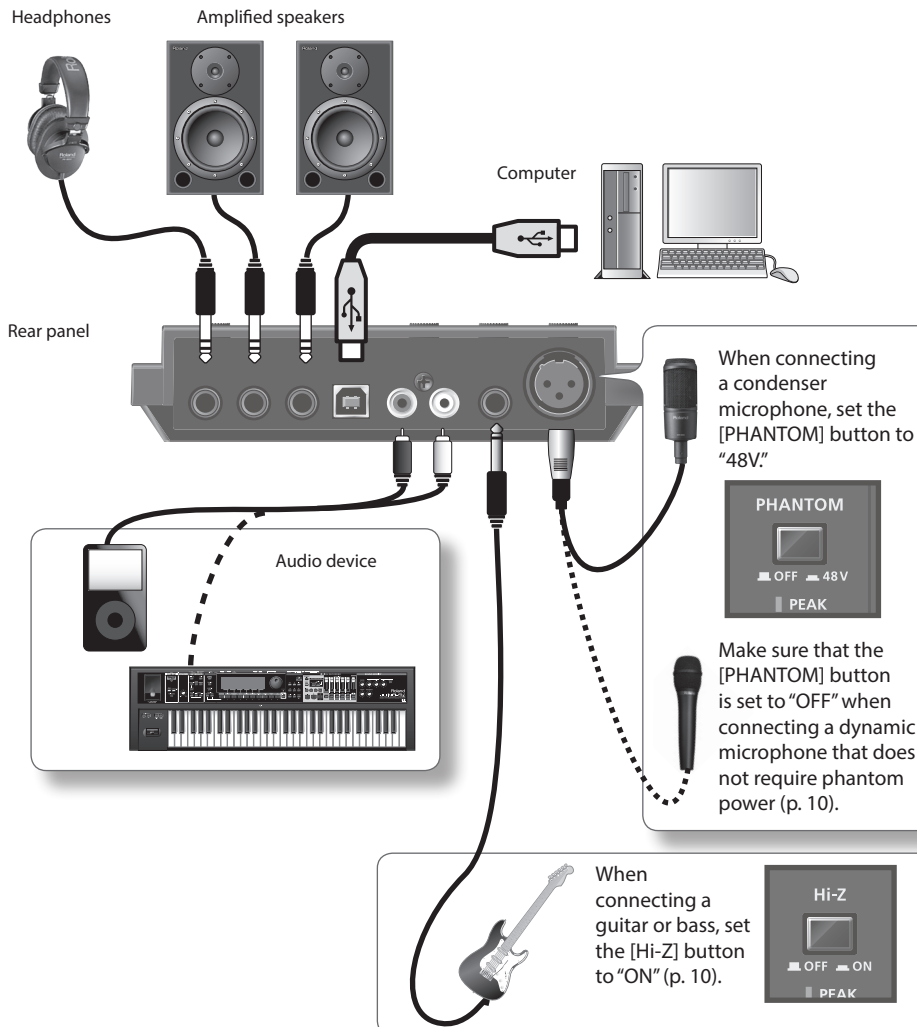
- Microphone or guitar sound is localized at the center.
- If you record audio device sound only, do not connect any equipment to the INPUT 1 (MIC) or INPUT 2 (GUITAR) jack, and turn the [INPUT 1 (MIC)] and [INPUT 2 (GUITAR)] knobs fully to the left.
- In “ALL INPUT” mode, you cannot record audio data played on the computer. To record audio data played on the computer, set the [REC MODE] button to “LOOP BACK.”
- When recording, sound from the microphone, guitar, and audio device is mixed together. You cannot edit the recorded audio data separately.

Examples of How to Use the “ALL INPUT” Mode

- Recording the guitar sound while playing a Minus One CD
- Singing with the karaoke sound of an audio device, and recording the vocal and karaoke sound
- Recording vocal or guitar sound with a synthesizer
- Recording voice-over for a TV or video game, using a microphone

Record Microphone or Guitar Sound While Mixing it with Audio Data Played on a Computer (LOOP BACK)

When you set the recording mode to "LOOP BACK," you can record microphone, guitar, and/or audio device sound on another software by combining audio data played on the computer.



Use the corresponding knob ([INPUT 1 (MIC)], [INPUT 2 (GUITAR)], or [INPUT 3 (AUX)]) to adjust the volume of the microphone, guitar, or audio device so its PEAK indicator does not light.

Features of the “LOOP BACK” Mode

- Microphone or guitar sound is localized at the center.
- If you want to record only the sound played by your computer, do not connect any equipment to the INPUT 1 (MIC), INPUT 2 (GUITAR), and INPUT 3 (AUX) jacks, and turn the [INPUT 1 (MIC)], [INPUT 2 (GUITAR)], and [INPUT 3 (AUX)] knobs fully to the left.
- If you set the [SAMPLE RATE] switch to “96k,” you cannot set the [REC MODE] button to “LOOP BACK.” Set the [SAMPLE RATE] switch to “44.1k” or “48k.”
- When recording, sound played by the computer and sound from the microphone, guitar, and audio device are mixed together. You cannot edit the recorded audio data separately.

Usage Examples for the “LOOP BACK” Mode

- Singing with the karaoke sound that is played on a web browser or Windows Media Player, and recording the vocal and karaoke sound on the DAW software
- Inputting personal computer game sound into your software for streaming media delivery
- Using some other software package to record an Internet radio program you are listening to using a web browser

Troubleshooting

If you experience problems, read this chapter first. It contains tips for solving most problems. If this chapter cannot help you solve a problem, please refer to the support section of our website. If the problem is not resolved, refer to the contact information listed at the end of this document.

Roland support website: <http://www.roland.com/>

Problems When Installing the Driver

Problem	Confirmation	Resolution
Installer does not start	Are you attempting to install from a networked DVD-ROM drive?	You cannot install from a networked DVD-ROM drive.
Cannot install	Are you logged on with a user account that does not have administrator privileges?	Log on to the computer with a user account that has administrator privileges. For details, consult the administrator for your computer system.
	Is the "Driver Signing Options" setting set to [Block]? (Windows XP)	Change the "Driver Signing Options" setting (p. 36).
	Are other programs or resident programs (such as antivirus programs) running?	Be sure to exit all other programs before installation.
Warning or error appears during installation (Windows)	In the "Device Manager," do you see "Other device," "Unknown device," or a device for which "?", "!", or "x" is displayed?	Reinstall the TRI-CAPTURE driver (p. 41).
Installer does not exit	Is your computer running on battery power?	Connect the power cord to the computer.
	Other than a mouse and keyboard, are any USB devices connected?	Make sure that there are no USB devices connected to the computer (other than a mouse and keyboard) during installation.
	Is the TRI-CAPTURE connected to a USB hub that is not connected to a power supply?	Use a USB hub that connects to a power supply.
"Found New Hardware Wizard" appears again after driver was installed (Windows XP)	Did you connect the TRI-CAPTURE to a different USB connector than the one you used when installing the driver?	If you change the USB connector to which the TRI-CAPTURE is connected, the "Found New Hardware Wizard" may appear again even if the driver has already been installed on the computer. Follow step 9 of the driver installation procedure (p. 17) and install the driver.
Numeral such as "2-" appears at the beginning of a device name (Windows)	Did you connect the TRI-CAPTURE to a different USB connector than the one you used when installing the driver?	If you connect the TRI-CAPTURE to a different USB connector than the one you used when installing the driver, a numeral may appear with the device name. To have the device name appear without the numeral, connect the TRI-CAPTURE to the same USB connector used during installation, or reinstall the driver (p. 41).

Problems When Using the TRI-CAPTURE

Problem	Confirmation	Resolution
Cannot select or use TRI-CAPTURE device	Is the driver installed?	Install the driver (p. 14).
	Is the REC MODE indicator off?	Make sure that the TRI-CAPTURE is connected to the computer correctly. If the problem is not resolved, reinstall the driver (p. 41).
	Is the TRI-CAPTURE's device name displayed?	Exit all programs that are using the TRI-CAPTURE, disconnect the TRI-CAPTURE's USB cable, and then reconnect it. If the problem is not resolved, reinstall the driver (p. 41).
	Is another program using the TRI-CAPTURE?	Exit all programs that are using the TRI-CAPTURE, disconnect the TRI-CAPTURE's USB cable, and then reconnect it. If the problem is not resolved, reinstall the driver (p. 41).
	Did the computer enter standby (suspend) mode, hibernate mode, or sleep mode while the TRI-CAPTURE was connected?	Exit all programs that are using the TRI-CAPTURE, disconnect the TRI-CAPTURE's USB cable, and then reconnect it. If the problem is not resolved, restart the computer.
	Did you disconnect and reconnect the USB cable while using the TRI-CAPTURE?	Exit all programs that are using the TRI-CAPTURE, disconnect the TRI-CAPTURE's USB cable, and then reconnect it. If the problem is not resolved, restart the computer.
	Was the TRI-CAPTURE connected to the computer while the computer was starting up?	Connect the TRI-CAPTURE after the computer has started up. With some computers, the TRI-CAPTURE cannot be used if it is connected to the computer while the computer is starting up.
Cannot change driver settings (Windows 8/ Windows 7)	Is the monitoring function of Windows enabled?	Disable the monitoring function (p. 40).
Cannot select "LOOP BACK" by pressing the [REC MODE] button	Is the [SAMPLE RATE] switch set to "96k"?	Set the [SAMPLE RATE] switch to "44.1k" or "48k." When the [SAMPLE RATE] switch is set to "96k," you cannot select "LOOP BACK" by pressing the [REC MODE] button.
No sound from computer's speakers	This is not a malfunction.	When using the TRI-CAPTURE, no sound is heard from the computer's speakers. Connect headphones or audio playback system (external monitors) to the TRI-CAPTURE.
No sound from the speakers connected to the TRI-CAPTURE	Is the [OUTPUT MUTE] button set to "ON"?	Set the [OUTPUT MUTE] button to "OFF."

Troubleshooting

Problem	Confirmation	Resolution
Sound played by your computer is inaudible or too soft	Can you hear sound by connecting headphones?	If you can hear sound through headphones connected to the PHONES jack, check that you have correctly connected your audio playback system (external monitors), and adjust the volume of your equipment. If the sound in your headphones is inaudible or too soft, check the other troubleshooting items.
	Is the [PHONES] knob of the TRI-CAPTURE turned down?	Use the TRI-CAPTURE's [PHONES] knob to adjust the volume.
	Is the computer's volume setting turned down?	Adjust the computer's volume setting (p. 39).
	Are you using voice communication software? (Windows 8/Windows 7)	Disable automatic volume adjustment (p. 40).
	Is the driver's audio buffer size too small?	Increase the buffer size (p. 43).
Computer playback sound is "doubled"	Is the [REC MODE] button set to "LOOP BACK"?	Set the [REC MODE] button to "MIC/GUITAR" or "ALL INPUTS."
Insufficient volume from your microphone	Are you using the correct connector?	Connect your microphone with an XLR type plug to the XLR type connector (INPUT 1 (MIC) jack) (p. 13)
	Does the sensitivity of the microphone match the nominal input level of the TRI-CAPTURE?	The TRI-CAPTURE's microphone nominal input level is -60 dBu. If the sensitivity of the microphone is low, the level will be low.
	Also check the contents of "The volume level of the instrument connected to input connector is too low." (p. 32)	
Insufficient volume from your guitar	Are you using the correct connector?	Connect your guitar to the INPUT 2 (GUITAR) jack (p. 12).
	Is the [Hi-Z] button set to "OFF"?	Set the [Hi-Z] button to "ON" (p. 10).
	Is the input level too low?	Use the [INPUT 2 (GUITAR)] knob to adjust the input level (p. 11).
	Could you be using a connection cable that contains a resistor?	Use a connection cable that does not contain a resistor.
	Also check the contents of "The volume level of the instrument connected to input connector is too low." (p. 32).	
The volume level of the instrument connected to input connector is too low	Is the input level too low?	Turn the [INPUT 1 (MIC)], [INPUT 2 (GUITAR)], or [INPUT 3 (AUX)] knob toward the right to increase the input level (p. 11)
	Could you be using a connection cable that contains a resistor?	Use a connection cable that does not contain a resistor.

Problem	Confirmation	Resolution
Distorted sound from a device connected to the input jack	Is the PEAK indicator lighting up?	Turn the [INPUT 1 (MIC)], [INPUT 2 (GUITAR)], or [INPUT 3 (AUX)] knob toward the left to reduce the input level (p. 11).
Playback of an instrument connected to the input jack of the TRI-CAPTURE is “doubled”	Is the [INPUT MONITOR] button set to “ON”?	Set the [INPUT MONITOR] button to “OFF.” Or, set the direct monitor function of the software to off.
Howling occurs	Is the microphone near the speakers?	Relocate the microphone away from the speakers. If howling still occurs, set the [OUTPUT MUTE] button to “OFF,” and listen to the sound by using the headphones.
Sound is interrupted during playback or recording, sound drops out	Are multiple programs running?	Exit programs that are not in use.
	Is the software’s audio buffer size set correctly?	If the software allows you to adjust the audio buffer size, change the buffer size. Refer to the documentation for your software.
	Is the driver’s audio buffer size set correctly?	Increase the driver’s audio buffer size (p. 43).
	Is the “Recording Margin” setting appropriate? (Mac OS X)	If audio drops out or if noise is heard even if you have adjusted the audio buffer size, increase the “Recording Margin” setting (p. 44).
	Is the system software up to date?	Run Windows Update or Microsoft Update and make sure the system software is up to date.
	Have you used Mac OS X Software Update?	Run Software Update and make sure the system software is up to date.
	Are the drivers for the computer’s internal chipset and graphics card up to date?	Update to the latest drivers, as necessary.
	Are the drivers for the computer’s LAN hardware (wired and wireless) up to date?	Install the latest LAN hardware drivers. If the problem is not resolved, disable the LAN.
	Is the computer’s power management setting set to economy mode?	Check the power management setting and make the appropriate setting (p. 37).
	Is the system’s “Performance” setting correct? (Windows)	Change the system’s “Performance” settings (p. 38).
	Is the TRI-CAPTURE connected to a USB hub?	Connect the TRI-CAPTURE directly to one of the computer’s USB connectors.
	Are you using the included USB cable?	You must use the included USB cable. Some commercially available USB cables do not meet the requirements of the USB standard, and this may prevent the TRI-CAPTURE from operating correctly.

Troubleshooting

Problem	Confirmation	Resolution
Sound is interrupted during playback or recording, sound drops out	Is the monitoring function of Windows enabled? (Windows 8/Windows 7)	Disable the monitoring function (p. 40).
	Did you try to play back or record immediately after the computer started up or after it woke up from sleep mode?	Wait a while before attempting playback or recording.
Noise or distortion occurs elsewhere than in the playback from your computer	Is a guitar connected?	Move as far away from the computer as possible. If the noise decreases when you lower your guitar's volume, it may be that your guitar's pickups are being affected by noise from your computer or display.
	Could you have left an unused microphone, guitar, or audio device connected?	Disconnect the unused microphone, guitar, or audio device, and then turn the corresponding knob ([INPUT 1 (MIC)], [INPUT 2 (GUITAR)], or [INPUT 3 (AUX)]) to the left fully.
	Do you have a MIDI sound module and the TRI-CAPTURE connected to your computer with the USB cables, and have the output of the MIDI sound module connected to the input jack of the TRI-CAPTURE?	Connect the MIDI sound module and the TRI-CAPTURE to a self-powered USB hub (a USB hub that uses an AC plug).
	Have you connected the ground terminal?	You may be able to solve the problem by grounding a metal component of your computer or the ground pin of your computer's AC adaptor. Also check whether there might be a device nearby that is emitting a strong electromagnetic field, such as a television or microwave oven.
Recorded sound is too loud or too soft	Is the input level appropriate?	Use the [INPUT 1 (MIC)], [INPUT 2 (GUITAR)], or [INPUT 3 (AUX)] knob to adjust the input level. If your software has an input level adjustment, check the input level setting.
	Does the sensitivity of the microphone match the input level of the TRI-CAPTURE?	The TRI-CAPTURE's microphone input level is -60 dBu. If the sensitivity of the microphone is low, the level will be low.
Cannot play back or record	Is the driver installed?	Install the driver (p. 14).
	Are the software's input device and output device configured?	Select the TRI-CAPTURE as the input and output device (p. 21).
	Is the TRI-CAPTURE's REC MODE indicator off?	Make sure that the TRI-CAPTURE is connected to the computer correctly. If the problem is not resolved, reinstall the driver (p. 41).

Problem	Confirmation	Resolution
Cannot play back or record	Is the [SAMPLE RATE] switch set to "96k"?	When the [SAMPLE RATE] switch is set to "96k," the TRI-CAPTURE cannot record and play audio data simultaneously. For playback, set the [MODE] switch to "PLAY;" and for recording, set the [MODE] switch to "REC." Or, set the [SAMPLE RATE] switch to "44.1k" or "48k."
	Is there another program using the TRI-CAPTURE?	Exit all programs that are using the TRI-CAPTURE, disconnect the TRI-CAPTURE's USB cable, and then reconnect it. If the problem is not resolved, reinstall the driver (p. 41).
	Did the computer enter standby (suspend) mode, hibernate mode, or sleep mode while the TRI-CAPTURE was connected?	Exit all programs that are using the TRI-CAPTURE, disconnect the TRI-CAPTURE's USB cable, and then reconnect it. If the problem is not resolved, restart the computer.
	Did you disconnect and reconnect the USB cable while using the TRI-CAPTURE?	Exit all programs that are using the TRI-CAPTURE, disconnect the TRI-CAPTURE's USB cable, and then reconnect it. If the problem is not resolved, restart the computer.
	Is the computer's volume setting turned down?	Adjust the computer's volume setting (p. 39).
	Are you using voice communication software? (Windows 8/Windows 7)	Disable automatic volume adjustment (p. 40).
	Was the TRI-CAPTURE connected to the computer while the computer was starting up?	Connect the TRI-CAPTURE after the computer has started up. With some computers, the TRI-CAPTURE cannot be used if it is connected to the computer while the computer is starting up.
	Is the driver's audio buffer size too small?	Increase the buffer size (p. 43).
	Did the computer perform a processor-intensive task while you were using the TRI-CAPTURE?	Stop playback or recording, and then try playing back or recording again. If the problem is not resolved, exit all programs that are using the TRI-CAPTURE, disconnect the TRI-CAPTURE's USB cable, and then reconnect it.
Cannot play or record 24-bit audio data	Does your software support 24-bit audio data?	Check whether your software supports playback and recording of 24-bit audio data.
	Is the software set correctly?	Make sure that your software is set to play and record 24-bit audio data.

Changing Computer Settings to Avoid Problems

Changing these computer settings can help you avoid the problems described in “Problems When Installing the Driver” (p. 30) and “Problems When Using the TRI-CAPTURE” (p. 31).

Driver Signing Options Setting (Windows XP)

If the “Driver Signing Options” setting is set to [Block], you cannot install the driver. Configure as follows.

1. **Open the “Control Panel,” click [Performance and Maintenance], and then click the [System] icon.**

If you have selected Classic view, double-click [System].

2. **Click the [Hardware] tab, and then click [Driver Signing].**

The “Driver Signing Options” dialog box will open.

3. **In the “Driver Signing Options” dialog box, select [Warn] or [Ignore], and then click [OK].**

4. **Click [OK] to close the “System Properties” dialog box.**

5. **Install the driver as described in “Driver Installation” (p. 14).**

When you have completed the installation, return the “Driver Signing Options” setting to its original setting.

Power Management Settings

If the sound is interrupted during a performance or if sounds are missing, you may be able to resolve the problem by changing the computer's power management settings.

Windows 8/Windows 7/Windows Vista

1. Open the "Control Panel," click [System and Security] or [System and Maintenance], and then click [Power Options].
 - If you have selected Icon view in Windows 8/Windows 7, double-click the [Power Options] icon.
 - If you have selected Classic view in Windows Vista, double-click the [Power Options] icon.
2. When "Select a power plan" appears, select [High performance].
3. Click [Change plan settings] next to [High performance].

If "High performance" is not displayed in Windows 8/Windows 7, click [Show additional plans].
4. Click [Change advanced power settings].
5. In the [Advanced settings] tab of the "Power Options" control panel, click the [+] mark next to "Hard disk," and then click the [+] mark next to "Turn off hard disk after."
6. Click [Setting], click the down arrow, and then select [Never].
7. Click [OK] to close the "Power Options" window.
8. Close the "Edit plan settings" screen.

Windows XP

1. Open the "Control Panel," click [Performance and Maintenance], and then click [Power Options].

If you have selected Classic view, double-click [Power Options].
2. Click the [Power Schemes] tab, and set "Power schemes" to [Always On].
3. Click [OK] to close "Power Options Properties."

Mac OS X

This setting is not available on certain versions of Mac OS X.

1. Open "System Preferences" and click [Energy Saver].
2. Click [Options].
3. Set "Processor Performance" to [Highest].

System “Performance” Settings (Windows)

If the sound is interrupted during a performance or if sounds are missing, you may be able to solve the problem by changing the “Performance” setting of the system as described below.

Windows 8/Windows 7/Windows Vista

1. **Open the “Control Panel,” click [System and Security] or [System and Maintenance], and then click [System].**
 - If you have selected Icon view in Windows 8/Windows 7, double-click the [System] icon.
 - If you have selected Classic view in Windows Vista, double-click the [System] icon.
2. **Click [Advanced system settings] at the left.**
3. **When a User Account Control dialog box appears, click [Yes] or [Continue].**

If you’re asked to enter an administrator password, log on to the computer with a user account that has administrator privileges, and make the setting again.
4. **Click [Settings] in “Performance,” and click the [Advanced] tab.**
5. **Select [Background services] and click [OK].**
6. **Click [OK] to close “System Properties.”**

Windows XP

1. **Open the “Control Panel,” click [Performance and Maintenance], and click [System].**

If you have selected Classic view, double-click [System].
2. **Click the [Advanced] tab, and click [Settings] in “Performance.”**
3. **Click the [Advanced] tab.**
4. **Select [Background services], and click [OK].**
5. **Click [OK] to close “System Properties.”**

Setting the System Volume

If the playback volume is too loud or too quiet, try adjusting the system volume.

Windows 8/Windows 7

1. Open the "Control Panel" and set the display mode to "Category."
2. Click [Hardware and Sound], and then click [Adjust system volume].
3. After the volume mixer appears, select the TRI-CAPTURE's [OUT] from the "Device" pull-down menu and adjust the volume.

Windows Vista

1. Open the "Control Panel" and click [Hardware and Sound].
If you have selected Classic view, click [Control Panel Home] to exit Classic view.
2. Click [Adjust system volume] in "Sound."
3. After the volume mixer appears, select the TRI-CAPTURE's [OUT] from the "Device" menu and adjust the volume.
If [Mute] is set to "On," click [Mute] to set it to "Off."

Windows XP

1. Open the "Control Panel," click [Sounds, Speech, and Audio Devices], and then click [Sounds and Audio Devices].
If you have selected Classic view, double-click [Sounds and Audio Devices].
2. Click the [Audio] tab.
3. In the "Sound playback" area, make sure that [OUT (TRI-CAPTURE)] is selected as the "Default device," and click [Volume].
4. When the volume control appears, adjust the "Wave" volume.
If the mute check box is selected, clear the check box.

Mac OS X

1. Open "System Preferences" and click [Sound].
2. Click the [Output] tab.
3. In the "Select a device for sound output" area, make sure that [TRI-CAPTURE] is selected and use the "Output volume" slider to adjust the volume.
If the mute check box is selected, clear the check box.

Voice Communication Software Settings (Windows 8/Windows 7)

If you are using voice communication software, the volume of the audio device can be adjusted automatically to suit the conversation.

Use the following procedure to disable automatic volume adjustment.

1. Open the “Control Panel,” click [Hardware and Sound], and then click [Sound].

If you have selected Icon view, click [Sound].

2. In the [Communications] tab, set “When Windows detects communications activity” to [Do nothing].
3. Click [OK] to close “Sound.”

Monitoring Function Settings (Windows 8/Windows 7)

If the monitoring function of Windows is enabled, the input sound may be doubled (each sound is echoed) or feedback may be heard.

Use the following procedure to disable the monitoring function of Windows.

1. Open the “Control Panel,” click [Hardware and Sound], and then click [Sound].
If you have selected Icon view, click [Sound].
2. In the “Recording” area, click the TRI-CAPTURE’s [IN], and then click [Properties].
3. Click the “Listen” tab and clear the [Listen to this device] check box.
4. Click [OK] to close “Properties.”
5. Click [OK] to close “Sound.”

Reinstalling the Driver

If you experience problems installing the driver, use the following procedure and reinstall the driver.

1. Delete the TRI-CAPTURE's driver.
2. Install the driver again as described in "Driver Installation" (p. 14).

Deleting the Driver

If the computer does not detect the TRI-CAPTURE correctly, use the following procedure to delete the driver, and then install the driver again as described in "Driver Installation" (p. 14).

Windows

1. **Start up the computer without the TRI-CAPTURE connected.**
Disconnect all USB cables other than those for a USB keyboard and/or USB mouse (if used).
2. **Log on to the computer with a user account that has administrator privileges.**
3. **Insert the included CD-ROM into the computer's DVD-ROM drive.**
4. **Double-click the [Uninstal] icon in the [WinDriver] folder on the included CD-ROM.**
5. **When a confirmation screen regarding user account control appears, click [Yes] or [Continue].**
6. **When "The installed TRI-CAPTURE driver will be uninstalled." appears, click [OK].**
If other messages appear, follow the instructions on the screen.
7. **When "Uninstallation was completed." appears, click [OK] to restart the computer.**

Troubleshooting

Mac OS X

- 1. Start up the computer without the TRI-CAPTURE connected.**

Disconnect all USB cables other than those for a USB keyboard and/or USB mouse (if used).

- 2. Insert the included CD-ROM into the computer's DVD-ROM drive.**
- 3. Double-click [Uninstaller] in the [MacDriver] folder on the included CD-ROM.**
- 4. When "This uninstalls TRI-CAPTURE driver from this Macintosh." appears, click [Uninstall].**

If other messages appear, follow the instructions on the screen.

- 5. When "Are you sure you want to uninstall the driver?" appears, click [OK].**

The authentication dialog box or the message "Uninstaller requires that you type your password" will appear.

- 6. Enter the password and click [OK].**
- 7. When "Uninstallation is completed." appears, click [Restart] to restart the computer.**

It may take some time for the computer to restart.

Advanced Driver Settings

You can set the input and output audio buffer size and ASIO-related settings.

Windows

When using Windows 8/Windows 7, driver settings cannot be changed while the monitoring function of Windows is enabled. Disable the monitoring function (p. 40).

1. **Exit all programs that are using the TRI-CAPTURE.**
2. **Open the “Control Panel” and set the display mode as follows.**
 - Windows 8/Windows 7: Icon view
 - Windows Vista/Windows XP: Classic view
3. **Double-click the [TRI-CAPTURE] icon.**
4. **From the “Driver” menu, select [Driver Settings].**

The “TRI-CAPTURE Driver Settings” dialog box will appear.

Setting	Description
Audio Buffer Size	<p>You can adjust the input and output audio buffer size.</p> <p>Decrease the buffer size to decrease latency. Increase the buffer size if audio drops out.</p> <p>* After adjusting the buffer size, make sure to restart all programs that are using the TRI-CAPTURE. If using software that has an “audio device test” function, run the test function.</p>
[Use ASIO Direct Monitor] check box	To use the ASIO Direct Monitor function of ASIO-compatible software, select this check box.
[Show “README”]	You can display the online manual for the driver.

Troubleshooting

Mac OS X

1. Open “System Preferences” and click “TRI-CAPTURE.”

The “Driver Settings” panel appears.

Setting	Description
Audio Buffer Size	<p>You can adjust the driver’s input and output audio buffer size.</p> <p>Decrease the buffer size to decrease latency. Increase the buffer size if audio drops out.</p> <p>* After adjusting the buffer size, make sure to restart all programs that are using the TRI-CAPTURE. If using software that has an “audio device test” function, run the test function.</p>
Recording Margin	<p>If audio drops out or if noise is heard, even if you have adjusted the buffer size setting in the software and adjusted the “Audio Buffer Size” as explained above, increase the recording margin setting.</p>
Recording Timing	<p>Adjust this setting if the recorded audio data is not in time.</p> <p>* If the audio software is running, the new setting will not be applied immediately when [Apply] is clicked. Quit all audio software; The new setting will be applied the next time you start the software.</p>

Main Specifications

USB Audio Interface: Roland TRI-CAPTURE UA-33

Number of Audio Record/ Playback Channels	Record	1 pair of stereo * All inputs are mixed to 1 pair stereo on ALL INPUTS and LOOP BACK mode.
	Playback	1 pair of stereo Full duplex (Except 96 kHz)
Signal Processing	24 bits (linear)	
Sampling Frequency	96 kHz, 48 kHz, 44.1 kHz	
Nominal Input Level	INPUT1 (MIC) jack	-60 to -30 dBu
	INPUT2 (GUITAR) jack	-25 dBu
	INPUT3 (AUX) jacks	-10 dBu
Nominal Output Level	OUTPUT jacks	+4 dBu (Balance)
Residual Noise Level	-93 dBu typ. (input terminated with 1 k ohms, Input Monitor: OFF, IHF-A, typ.)	
Dynamic Range	100 dB typ.	
Interface	USB	
Rec Mode	MIC/GUITAR ALL INPUTS LOOP BACK (Except 96 kHz)	
Controller	[INPUT1 (MIC)], [INPUT2 (GUITAR)], [INPUT3 (AUX)] knob [PHONES] knob [PHANTOM] button [HI-Z] button [REC MODE] button [OUTPUT MUTE] button [INPUT MONITOR] button [SAMPLE RATE] switch [MODE] switch	
Indicator	PEAK indicators SIG indicators	
Connectors	INPUT1 (MIC) Jack (XLR type, balanced, phantom power DC 48 V, 10 mA) * 1/4-inch phone type and plug-in powered microphone cannot connected INPUT2 (GUITAR) jack (1/4-inch phone type) INPUT3 (AUX) jacks(L, R) (RCA phono type) OUTPUT jacks (L, R) (1/4-inch TRS phone type (balanced)) PHONES jack (stereo 1/4-inch phone type) USB connector (USB Type B)	
Power Supply	Supplied from the computer via USB	
Current Draw	450 mA	

Main Specifications

Dimensions	171 (W) x 134 (D) x 40 (H) mm 6-3/4 (W) x 5-5/16 (D) x 1-5/8 (H) inches
Weight	320 g / 12 oz. (TRI-CAPTURE unit only)
Accessories	Owner's Manual CD-ROM USB cable Ableton Live Lite Serial Number Card

(0 dBu = 0.775 Vrms)

*** In the interest of product improvement, the specifications, and/or appearance of this unit are subject to change without prior notice.**

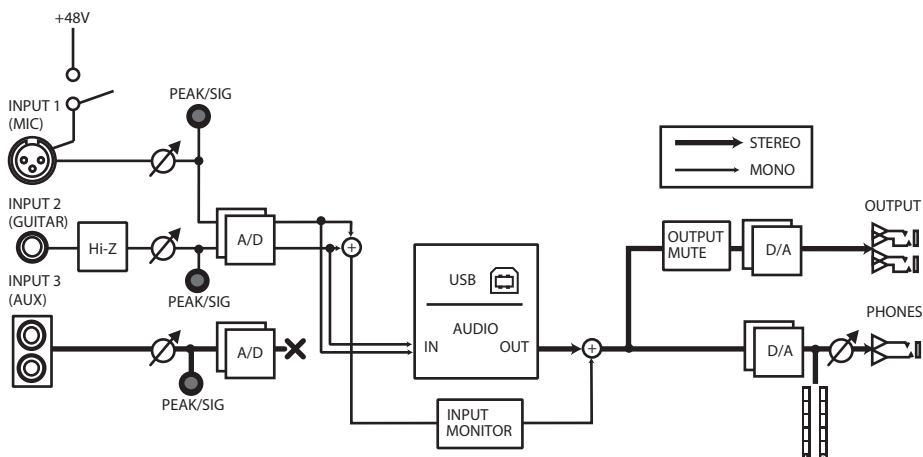
Index

A	
Ableton Live Lite Serial Number Card	8
ALL INPUTS	26, 48
Audio input device	21
Audio output device	21
B	
Bass	10
C	
Condenser microphone	10, 24, 26, 28
D	
Driver	
Advanced settings	43
Delete	41
Install	14
Reinstall	41
Dynamic microphone	10, 24, 26, 28
G	
Guitar	10
H	
[Hi-Z] button	10
I	
INPUT 1 (MIC) jack	13
[INPUT 1 (MIC)] knob	11
INPUT 2 (GUITAR) jack	12
[INPUT 2 (GUITAR)] knob	11
INPUT 3 (AUX) jacks	12
[INPUT 3 (AUX)] knob	11
[INPUT MONITOR] button	11
Input/output device	21
Install	
Driver	14
L	
LOOP BACK	28, 49
M	
MIC/GUITAR	24, 48
[MODE] switch	13
O	
OUTPUT jack	12
Output level indicators	11
[OUTPUT MUTE] button	11
P	
PEAK indicators	11
[PHANTOM] button	10
Phantom power	10, 13
PHONES jack	12
[PHONES] knob	12
Playing Back	22
R	
REC MODE	23
ALL INPUTS	26, 48
LOOP BACK	28, 49
MIC/GUITAR	24, 48
[REC MODE] button	11
Recording	
Audio device	26, 28
Computer	28
Microphone or guitar	24, 26, 28
S	
[SAMPLE RATE] switch	13
SIG indicators	11
U	
USB connector	12

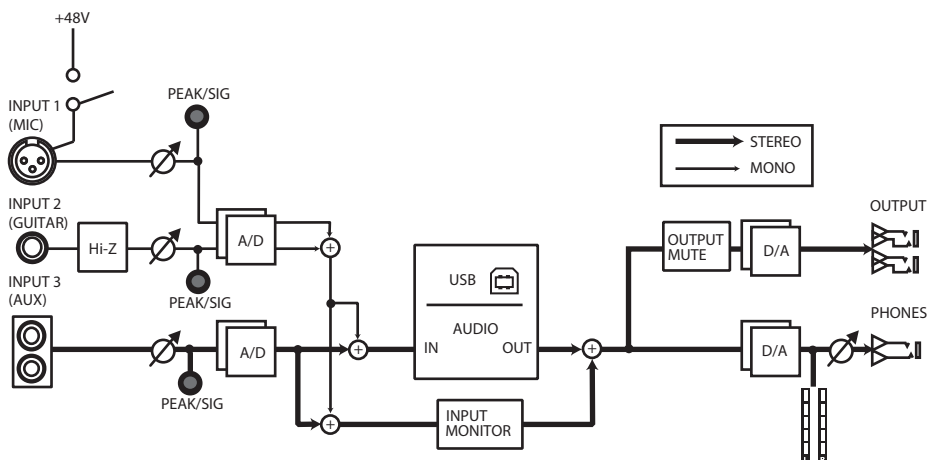
Block Diagrams for REC MODE

For details about the REC MODE function, refer to “Recording” (p. 23).

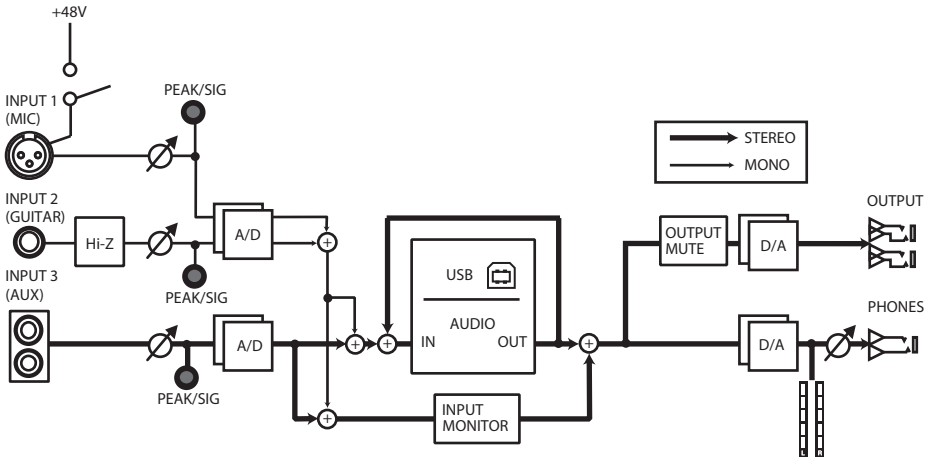
MIC/GUITAR



ALL INPUTS



LOOP BACK



For EU Countries



UK This symbol indicates that in EU countries, this product must be collected separately from household waste, as defined in each region. Products bearing this symbol must not be discarded together with household waste.

DE Dieses Symbol bedeutet, dass dieses Produkt in EU-Ländern getrennt vom Hausmüll gesammelt werden muss gemäß den regionalen Bestimmungen. Mit diesem Symbol gekennzeichnete Produkte dürfen nicht zusammen mit den Hausmüll entsorgt werden.

FR Ce symbole indique que dans les pays de l'Union européenne, ce produit doit être collecté séparément des ordures ménagères selon les directives en vigueur dans chacun de ces pays. Les produits portant ce symbole ne doivent pas être mis au rebut avec les ordures ménagères.

IT Questo simbolo indica che nei paesi della Comunità europea questo prodotto deve essere smaltito separatamente dai normali rifiuti domestici, secondo la legislazione in vigore in ciascun paese. I prodotti che riportano questo simbolo non devono essere smaltiti insieme ai rifiuti domestici. Ai sensi dell'art. 13 del D.Lgs. 25 luglio 2005 n. 151.

ES Este símbolo indica que en los países de la Unión Europea este producto debe recogerse aparte de los residuos domésticos, tal como esté regulado en cada zona. Los productos con este símbolo no se deben depositar con los residuos domésticos.

PT Este símbolo indica que nos países da UE, a recolha deste produto deverá ser feita separadamente do lixo doméstico, de acordo com os regulamentos de cada região. Os produtos que apresentem este símbolo não deverão ser eliminados juntamente com o lixo doméstico.

NL Dit symbool geeft aan dat in landen van de EU dit product gescheiden van huishoudelijk afval moet worden aangeboden, zoals bepaald per gemeente of regio. Producten die van dit symbool zijn voorzien, mogen niet samen met huishoudelijk afval worden verwijderd.

DK Dette symbol angiver, at i EU-lande skal dette produkt opsamles adskilt fra husholdningsaffald, som defineret i hver enkelt region. Produkter med dette symbol må ikke smides ud sammen med husholdningsaffald.

NO Dette symbolet indikerer at produktet må behandles som spesialavfall i EU-land, iht. til retningslinjer for den enkelte regionen, og ikke kastes sammen med vanlig husholdningsavfall. Produkter som er merket med dette symbolet, må ikke kastes sammen med vanlig husholdningsavfall.

SE Symbolen anger att i EU-länder måste den här produkten kasseras separat från hushållsavfall, i enlighet med varje regions bestämmelser. Produkter med den här symbolen får inte kasseras tillsammans med hushållsavfall.

FI Tämä merkintä ilmaisee, että tuote on EU-maissa kerättävä erillään kotitalousjätteistä kunkin alueen voimassa olevien määräysten mukaisesti. Tällä merkinnällä varustettuja tuotteita ei saa hävittää kotitalousjätteen mukana.

HU Ez a szimbólum azt jelenti, hogy az Európai Unióban ezt a terméket a háztartási hulladéktól elkülönítve, az adott régióban érvényes szabályozás szerint kell gyűjteni. Az ezzel a szimbólummal ellátott termékeket nem szabad a háztartási hulladék közé dobni.

PL Symbol oznacza, że zgodnie z regulacjami w odpowiednim regionie, w krajach UE produktu nie należy wyrzucać z odpadami domowymi. Produktów opatrzonych tym symbolem nie można utylizować razem z odpadami domowymi.

CZ Tento symbol udává, že v zemích EU musí být tento výrobek sbírán odděleně od domácího odpadu, jak je určeno pro každý region. Výrobky nesoucí tento symbol se nesmí vyhazovat spolu s domácími odpady.

SK Tento symbol vyjadruje, že v krajinách EÚ sa musí zber tohto produktu vykonávať oddelene od domového odpadu, podľa nariadení platných v konkrétnej krajine. Produkty s týmto symbolom sa nesmú vyhazovať spolu s domovým odpadom.

EE See sümbol näitab, et EL-i maades tuleb see toode olemprügist eraldi koguda, nii nagu on iga piirkonnas määratletud. Selle sümboliga märgitud tooteid ei tohi ära visata koos olemprügiga.

LT Šis simbolis rodo, kad ES šalyse šis produktas turi būti surenkamas atskirai nuo buitinio atliekų, kaip nustatyta kiekvienoje regione. Šiuo simboliu paženkintų produktai neturi būti išmetami kartu su buitiniems atliekomis.

LV Šis simbols norāda, ka ES valstīs šo produktu jāievā atsevišķi no mājsaimniecības atkritumiem, kā noteikts katrā reģionā. Produkts ar šo simbolu nedrīkst izmest kopā ar mājsaimniecības atkritumiem.

SI Ta simbol označuje, da je treba proizvo v državah EU zbirati ločeno od gospodinjjskih odpadkov, tako kot je določeno v vsaki regiji. Proizvoda s tem znakom ni dovoljeno odlagati skupaj z gospodinjjskimi odpadki.

GR Το σύμβολο αυτό υποδηλώνει ότι στις χώρες της Ε.Ε. το συγκεκριμένο προϊόν πρέπει να συλλέγεται χωριστά από τα απόβλητα οικιακά απορρίμματα, σύμφωνα με όσα προβλέπονται σε κάθε περιοχή. Τα προϊόντα που φέρουν το συγκεκριμένο σύμβολο δεν πρέπει να απορρίπτονται μαζί με τα οικιακά απορρίμματα.

For China

有关产品中所含有害物质的说明

本资料就本公司产品中所含的特定有害物质及其安全性予以说明。

本资料适用于 2007 年 3 月 1 日以后本公司所制造的产品。

环保使用期限



此标志适用于在中国国内销售的电子信息产品，表示环保使用期限的年数。所谓环保使用期限是指在自制造日起的规定期限内，产品中所含的有害物质不致引起环境污染，不会对人体、财产造成严重的不良影响。

环保使用期限仅在遵照产品使用说明书，正确使用产品的条件下才有效。

不当的使用，将会导致有害物质泄漏的危险。

产品中有毒有害物质或元素的名称及含量

部件名称	有毒有害物质或元素					
	铅(Pb)	汞(Hg)	镉(Cd)	六价铬(Cr(VI))	多溴联苯(PBB)	多溴二苯醚(PBDE)
外壳(壳体)	×	○	○	○	○	○
电子部件(印刷电路板等)	×	○	×	○	○	○
附件(电源线、交流适配器等)	×	○	○	○	○	○

○：表示该有毒有害物质在该部件所有均质材料中的含量均在 SJ/T11363-2006 标准规定的限量要求以下。

×：表示该有毒有害物质至少在该部件的某一均质材料中的含量超出 SJ/T11363-2006 标准规定的限量要求。

因根据现有的技术水平，还没有什么物质能够代替它。

For the USA

DECLARATION OF CONFORMITY Compliance Information Statement

Model Name : UA-33
Type of Equipment : USB Audio Interface
Responsible Party : Roland Corporation U.S.
Address : 5100 S. Eastern Avenue, Los Angeles, CA 90040-2938
Telephone : (323) 890-3700



For EU Countries

This product complies with the requirements of EMC Directive 2004/108/EC.

For the USA

FEDERAL COMMUNICATIONS COMMISSION RADIO FREQUENCY INTERFERENCE STATEMENT

This equipment has been tested and found to comply with the limits for a Class B digital device, pursuant to Part 15 of the FCC Rules. These limits are designed to provide reasonable protection against harmful interference in a residential installation. This equipment generates, uses, and can radiate radio frequency energy and, if not installed and used in accordance with the instructions, may cause harmful interference to radio communications. However, there is no guarantee that interference will not occur in a particular installation. If this equipment does cause harmful interference to radio or television reception, which can be determined by turning the equipment off and on, the user is encouraged to try to correct the interference by one or more of the following measures:

- Reorient or relocate the receiving antenna.
- Increase the separation between the equipment and receiver.
- Connect the equipment into an outlet on a circuit different from that to which the receiver is connected.
- Consult the dealer or an experienced radio/TV technician for help.

This device complies with Part 15 of the FCC Rules. Operation is subject to the following two conditions:

- (1) this device may not cause harmful interference, and
- (2) this device must accept any interference received, including interference that may cause undesired operation.

Unauthorized changes or modification to this system can void the users authority to operate this equipment.
This equipment requires shielded interface cables in order to meet FCC class B Limit.

For Canada

NOTICE

This Class B digital apparatus meets all requirements of the Canadian Interference-Causing Equipment Regulations.

AVIS

Cet appareil numérique de la classe B respecte toutes les exigences du Règlement sur le matériel brouilleur du Canada.

For C.A. US (Proposition 65)

WARNING

This product contains chemicals known to cause cancer, birth defects and other reproductive harm, including lead.

Information

When you need repair service, call your nearest Roland Service Center or authorized Roland distributor in your country as shown below.

AFRICA

REUNION

MARCEL FO-YAM Sarl
25 Rue Jules Harmel,
Chaudron - 8979 97 491
Ste Clotilde Cedex,
REUNION ISLAND
TEL: (0262) 218-429

SOUTH AFRICA

Pul Bothner PTV Ltd.
Royal Cape Park, Unit 24
Londonderry Road, Ottery 7800
Cape Town, SOUTH AFRICA
TEL: (021) 799 4900

ASIA

CHINA

Roland Shanghai Electronics Co., Ltd.
9F, No.1500 Pingliang Road,
Yangpu Shanghai 200900, CHINA
TEL: (021) 5580-0800
Toll Free: 4007-888-010

Roland Shanghai Electronics Co., Ltd. (BEIJING OFFICE)
3F, Solux Fortune Building
63 West Dawang Road,
Chaoyang Beijing, CHINA
TEL: (010) 5960-2565/0777
Toll Free: 4007-888-010

HONG KONG

Tom Lee Music
11/F Silvercord Tower 1
30 Canton Rd
Tsimshatsui, Kowloon,
HONG KONG
TEL: 852-2737-7688

Parsons Music Ltd.

8th Floor, Railway Plaza, 39
Chatham Road South, T.S.T.,
Kowloon, HONG KONG
TEL: 852-2333-1863

INDIA

Riviera Digits (India) Pvt. Ltd.
411, Nirman Kendra Mahalaxmi
Flats Compound Off. Dr. Adwini
Moses Road, Mumbai-400011,
INDIA
TEL: (022) 2493 9051

INDONESIA

Pt. Citra Intrama
Ruko Garden Shopping Arcade
Unit 8 C6, Podomoro City
J.Letjend. S.Parmar Kav.28
Jakarta Barat 11470, INDONESIA
TEL: (021) 5698-5519/5520

KAZAKHSTAN

Altatau Dybystary
141 Abylai-Khan ave, 1st floor,
050000 Almaty, KAZAKHSTAN
TEL: (727) 2725477
Fax: (727) 2727030

KOREA

Cosmos Corporation
27, Bangpo-dae-ro, Seocho-gu,
Seoul, KOREA
TEL: (02) 3486-8855

MALAYSIA/SINGAPORE

Roland Asia Pacific Sdn. Bhd.
45-1, Block C2, Jalan PJU 1/39,
Dataran Prima, 47301 Petaling
Jaya, Selangor, MALAYSIA
TEL: (03) 7805-3263

PHILIPPINES

G.A. Yupangco & Co. Inc.
339 Gil J. Puyat Avenue
Makati, Metro Manila 1200,
PHILIPPINES
TEL: (02) 899 9801

TAIWAN

ROLAND TAIWAN ENTERPRISE CO., LTD.
9F-5, No. 112 Chung Shan
North Road Sec. 2 Taipei 104,
TAIWAN R.O.C.
TEL: (02) 2561 3339

THAILAND

Theera Music Co., Ltd.
100-108 Soi Verg
Nakornkarn, New Road,
Sumpantawong, Bangkok
10100, THAILAND
TEL: (02) 224-8821

VIET NAM

VIET HUONG CORPORATION
386 CACH MANG THANG TAM ST.
DIST.3, HO CHI MINH CITY,
VIET NAM
TEL: (08) 9316540

OCEANIA

AUSTRALIA/ NEW ZEALAND

Roland Corporation Australia Pty. Ltd.
38 Campbell Avenue, Des-Way
West, NSW 2099, AUSTRALIA
For Australia
TEL: (02) 9982 8266
For New Zealand
TEL: (09) 3098 715

CENTRAL/LATIN AMERICA

ARGENTINA

Instrumentos Musicales S.A.
Av.Santa Fe 2055
1123 Buenos Aires, ARGENTINA
TEL: (011) 4508-2700

BARBADOS

A&B Music Supplies Ltd
12 Webster Industrial Park
Wilkey, St.Michael, BARBADOS
TEL: (246) 430-1100

BRAZIL

Roland Brasil Ltda.
Rua San Jose, 211
Parque Industrial San Jose
Cotia - Sao Paulo - SP, BRAZIL
TEL: (011) 4615 5666

CHILE

Comercial Fancyl S.A.
Rut.: 96.919.420-1
Natalini Cox #739, 4th Floor
Santiago - Centro, CHILE
TEL: (02) 384-2180

COLOMBIA

CENTRO MUSICAL S.A.S.
Parque Industrial del Norte
Bodega 130
GIRARDOTA - ANTIOQUIA,
COLOMBIA
TEL: (454) 577 77 Ext 115

COSTA RICA

JUAN Bansbach Instruments Musicales
Ave.1, Calle 11, Apartado 10237,
San Jose, COSTA RICA
TEL: 258-0211

CURACAO

Zeelandia Music Center Inc.
Orionweg 30
Curacao, Netherland Antilles
TEL: (305) 5926866

DOMINICAN REPUBLIC

Instrumentos Fernando Giraldez
Calle Roberto Pastoriza #325
Sanchez Naco Santo Domingo,
DOMINICAN REPUBLIC
TEL: (809) 683 0305

ECUADOR

Max Musica
Rumichacha 822 y Zaruma
Guayaquil - ECUADOR
TEL: (593-3) 2302364

EL SALVADOR

OMNI MUSIC
75 Avenida Norte y Final Alameda
Juan Pablo II, Edificio No.4010
San Salvador, EL SALVADOR
TEL: 262-0788

GUATEMALA

Casa Instrumental
Calzada Roosevelt 34-01.zona
11 Ciudad de Guatemala,
GUATEMALA
TEL: (502) 599-2888

HONDURAS

Almacén Pajaro Azul S.A. de C.V.
80.Paz Barahona
3 Ave. 11 Calle S.O
San Pedro Sula, HONDURAS
TEL: (504) 553-2029

MARTINIQUE

Musique & Son
Z.Les Mangle
97232 Le Lamentin,
MARTINIQUE F.W.I.
TEL: 596 596 42680

MEXICO

Casa Weekamp, s.a. de c.v.
Av.Toluca No. 323, Col. Olivar
de los Padres 01780 Mexico D.F.,
MEXICO
TEL: (55) 5668-6699

Faly Music

Sucursal Capu Blvd. Norte N.3213
Col. Nueva Aurora C.P.72070
Puebla, Puebla, MEXICO
TEL: (01) 2221 2315667 o 97
FAX: (01) 2221 2266241

Gama Musica S.A. de C.V.
Madroa Pte. 810 Colonial Centro
C.P. 64000 Monterrey, Nuevo
Leon, MEXICO
TEL: (01) 81734-1640 o 8372-4097
www.gamamusic.com

Proscenia

Morelos No. 2273
Col. Arcos Sur
C.P. 44120 Guadalajara, Jalisco,
MEXICO
TEL: (01) 333 3630-0015

NICARAGUA

Bansbach Instrumentos Musicales Nicaragua
Altamira D'Este Calle Principal
de la Farmacia Sura Avenida
1 Cuadra al Oeste #4503
Managua, NICARAGUA
TEL: (505) 277-2557

PANAMA

SUPRO MUNDIAL S.A.
Boulevard Andrews, Albrook,
Panama City, REP. DE PANAMA
TEL: 315-0101

PARAGUAY

WORLD MUSIC
Jebai Center 2018, Centro
CIUDAD DE ESTE, PARAGUAY
TEL: (595) 615 059

PERU

AUDIONET DISTRIBUCIONES
MUSICALES SAC
Jr. Ramon Dagnino N°201- Jesús
Maria
DISTRITO DE JESUS MARIA
LIMA, PERU
TEL: 9 983 47 301 - 51 433 80 83

TRINIDAD

AMR Ltd
Ground Floor
Maritime Plaza
Bartaria TRINIDAD W.I.
TEL: (868) 638 6385

URUGUAY

Todo Musica S.A.
Francisco Acuna de Figueroa
1771
C.P: 11.800
Montevideo, URUGUAY
TEL: (02) 924-2335

VENEZUELA

Instrumentos Musicales Allegro,C.A.
Av.las industrias edif.Guitar
import #7 zona Industrial de
Turumo Caracas, VENEZUELA
TEL: (212) 244-1122

EUROPE

BELGIUM/FRANCE/ HOLLAND/ LUXEMBOURG

Roland Central Europe N.V.
Houtstraat 3, B-2260, Oevel
(Westerlo) BELGIUM
TEL: (014) 575811

BOSNIA AND HERZEGOVINA

Mix-AP Music
78000 Banja Luka, Veselina
Madjesa 3
BOSNIA AND HERZEGOVINA
TEL: 65 403 168

CROATIA

ART-CENTAR
Degenova 3
HR - 10000 Zagreb, CROATIA
TEL: (1) 466 8493

EUROMUSIC AGENCY

K. Racina 1/15
HR - 40000 KAKOVCE, CROATIA
TEL: 40-370-841

CZECH REPUBLIC

DISTRIBUTOŘ s.r.o
Pod Bláně 6
180 00 Praha 8, CZECH REP.
TEL: 266 312 557

DENMARK/ESTONIA/ LATVIA/LITHUANIA

Roland Scandinavia A/S
Skaggeravej 7, DK-2150
Nordhavn, DENMARK
TEL: 39166200

FINLAND

Roland Scandinavia As, Filial Finland
Vanha Nurmijärventie 62
01670 Vantaa, FINLAND
TEL: (0) 9 68 24 020

GERMANY/AUSTRIA

ROLAND Germany GmbH.
Adam-Opel-Strasse 4, 64569
Neudheim, GERMANY
TEL: 6152 95546-00

GREECE/CYPRUS

STOLLAS S.A.
Music Sound Light
155, New National Road
Patras 26442, GREECE
TEL: 2610 435400

HUNGARY

East Europe Ltd.
2045, Törökbalint, FSD Park 3. ép.,
HUNGARY
TEL: (23) 511 011

IRELAND

Roland Ireland
E2 Calmount Park, Calmount
Avenue, Dublin 12,
Republic of IRELAND
TEL: (01) 4294444

ITALY

Roland Italy S. p. a.
Viale delle Industrie 8,
20020 Arese, Milano, ITALY
TEL: (02) 937871

MACEDONIA

MK MUZIK
Bratstvo Edinstvo 9
2208 Lohov, MACEDONIA
TEL: (70) 264 458

MONTENEGRO

MAX-AP
P. Rah 92
Prizno, Kamenovo bb
86000 Budva, MONTENEGRO
TEL: 33 452-820

NORWAY

Roland Scandinavia Avd.
Kontor Norge
Lilleakerveien 2 Postboks 95
Lilleaker N-0216 Oslo,
NORWAY
TEL: 2273 0074

POLAND

ROLAND POLSKA SP. Z O.O.
ul. Katy Golskiej 168
03-289 Warszawa, POLAND
TEL: (022) 678 9512

PORTUGAL

Roland Iberia SL
Branch Office Porto
Edificio Tower Plaza
Rotunda Eng. Edgar Cardoso 23,
4-B
4400-676 Vila Nova de Gaia,
PORTUGAL
TEL: (+351) 22 608 00 60

ROMANIA

Pro Music Concept SRL
440221 Satu Mare
B-dul Independentei nr. 14/a,
ROMANIA
TEL: (0361) 807-333

RUSSIA

Roland Music LLC
Dorozhnaya ul.3.korp.6
117 545 Moscow, RUSSIA
TEL: (495) 981-4967

SERBIA

Music AP
Sutjeska br. 5 X5 - 24413 PALIC,
SERBIA
TEL: (0) 24 539 395

SLOVAKIA

DAN Distribution, s.r.o.
Povazská 18.
SK - 940 01 Nové Zámky,
SLOVAKIA
TEL: (035) 6424 330

SPAIN

Roland Systems Group EMEA, S.L.
Paseo Garcia Faria, 33-35
08005 Barcelona, SPAIN
TEL: 93 493 91 00

SWEDEN

Roland Scandinavia A/S
SWEDISH SALES OFFICE
Mårbackagatan 31, 4 tr.
SE-123 43 Fårsta, SWEDEN
TEL: (0) 8 683 04 30

SWITZERLAND

Roland (Switzerland) AG
Landstrasse 5, Postfach
CH-4452 Hittnau, SWITZERLAND
TEL: (061) 975-9987

TURKEY

ZUHAI DIS TICARET A.S.
Galip Dedeci Cad. 31/3
Beyoglu, Istanbul, TURKEY
TEL: (0212) 249 85 10

UKRAINE

EURHYTHMICS Ltd.
P.O.Box: 37-4
Nedecyze Str. 30
UA - 89600 Mukachevo,
UKRAINE
TEL: (013131) 314-40

UNITED KINGDOM

Roland (U.K.) Ltd.
Atlantic Close, SWANSEA SA7
99J, UNITED KINGDOM
TEL: (01792) 702701

MIDDLE EAST

BAHRAIN

Moan Stores
No.12318/1249 Rumaytha
Building Road 3931,
Manama 339, BAHRAIN
TEL: 17 813 942

EGYPT

Al Fanny Trading Office
9, EBN Hagar Al Askalany Street,
ARD El Goll Heliopolis,
Cairo 11341, EGYPT
TEL: (0222)-417-1828

IRAN

MOCO INC.
Jadeh Makhsous Karaj (K-9),
Nahke Zariv Ave,
Jalal Street, Reza Alley No.4
Tehran 1389716791, IRAN
TEL: (021)-44545370-5

ISRAEL

Halilit P. Greenspoon & Sons Ltd.
8 Retzif Haalia Hashnia St.
Tel-Aviv-Yafo 67991, IRAN
TEL: (03) 6823666

JORDAN

MUSIC HOUSE CO. LTD.
FREDDY FOR MUSIC
P.O. Box 922846
Amman 11192, JORDAN
TEL: (06) 5692696

KUWAIT

EASA HUSAIN AL-YOUSIFI & SONS CO.
Al-Yousifi Service Center
P.O.Box 126 (Safat) 13002,
KUWAIT
TEL: 00 965 809299

LEBANON

Chahine S.A.L.
George Zeidan St., Chahine Bldg.
Achrafieh, P.O.Box: 16-5857
Beirut, LEBANON
TEL: (01) 20-1441

OMAN

TALENTZ CENTRE L.L.C.
Malatan House No.1
Al Noor Street, Ruwi
SULTANATE OF OMAN
TEL: 2478 3443

QATAR

AL-EMADI TRADING & CONTRACTING CO.
P.O. Box 62, Doha, QATAR
TEL: 4423-5554

SAUDI ARABIA

Adawlah Universal Electronics APL
Behind Pizza Inn
Prince Turkey Street
Adawlah Building,
PO BOX 2154,
Al Khobar 31952,
SAUDI ARABIA
TEL: (083) 8643601

SYRIA

Technical Light & Sound Center
Box 13520 Bldg No.49
Khaled Abu Alwalid St.
Damascus, SYRIA
TEL: (011) 223-5384

U.A.E.

Adawlah Universal Electronics APL
Omar bin alkhattab street, fish
round about, mayef area, deira,
Dubai, U.A.E.
TEL: (04) 2340442

NORTH AMERICA

CANADA

Roland Canada Ltd.
(Head Office)
5480 Parkwood Way Richmond
B.C., V6V 2M4, CANADA
TEL: (604) 270 6626

Roland Canada Ltd.

(Toronto Office)
170 Admiral Boulevard
Mississauga On L5T 2N6,
CANADA
TEL: (905) 362 9707

U. S. A.

Roland Corporation U.S.
5100 S. Eastern Avenue
Los Angeles, CA 90040-2938,
U.S.A.
TEL: (323) 890 3700

AS OF NOV. 1, 2013 (ROLAND)

