



## QUICK SETUP GUIDE

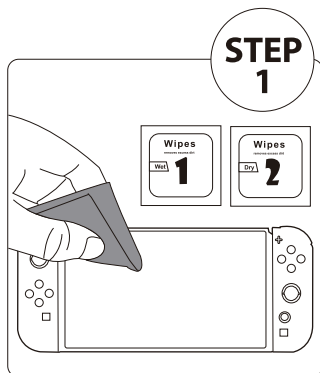
# Glass Screen Protector For Nintendo® Switch™ 2

## PACKAGE CONTENTS

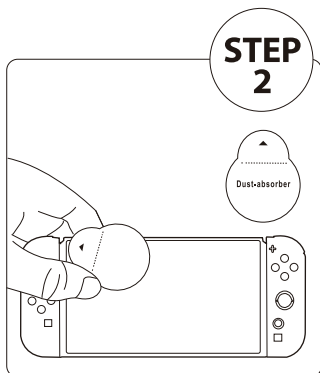
- Glass screen protector
- Guide sticker
- Squeeze card
- Quick setup guide
- Wet and dry wipes
- Dust-absorber
- Cleaning cloth

Before using your new product, please read these instructions to prevent any damage.

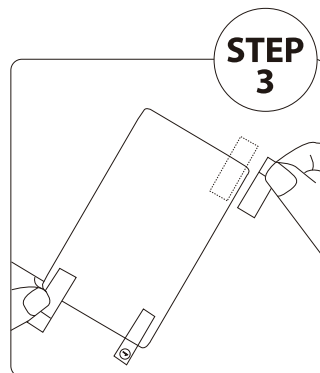
# ATTACHING YOUR SCREEN PROTECTOR



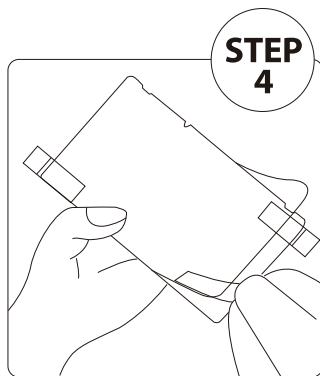
Clean the screen with provided wet / dry wipes and cloth.



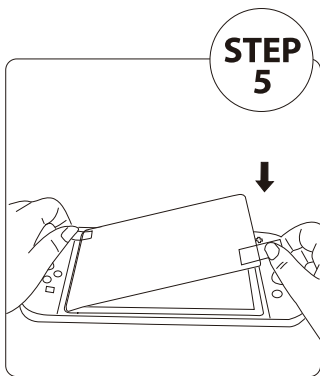
Clean the dust on the screen using dust-absorber sticker.



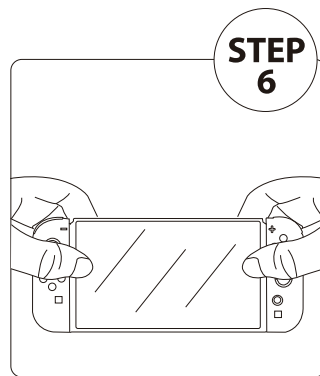
Stick two guide stickers on lower left and upper right of screen protector respectively.



Peel off the film on the back of screen protector.



Use two guide stickers to align the screen protector with edge of the screen, and apply adhesive side to the screen.



Gently press down the screen protector and remove all bubbles by using the squeeze card. Finally remove guide stickers.