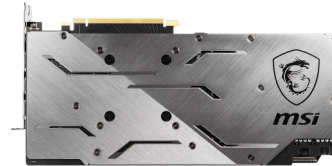
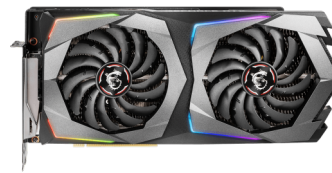




msi

GRAPHICS CARD

GeForce RTX 2070 GAMING Z 8G



SPECIFICATIONS

Model Name	GeForce RTX™ 2070 GAMING Z 8G
Graphics Processing Unit	NVIDIA® GeForce RTX™ 2070
Interface	PCI Express x16 3.0
Core Name	TU106-400A
Cores	2304 Units
Core Clocks	Boost: 1830 MHz Bast: 1410 MHz
Memory Speed	14 Gbps
Memory	8GB GDDR6
Memory Bus	256-bit
Output	DisplayPort x 3 (v1.4) / HDMI 2.0b x 1 / USB Type-C x1
HDCP Support	2.2
Power consumption	225 W
Power connectors	8-pin x 1, 6-pin x 1
Recommended PSU	550W
Card Dimension(mm)	307 x 155 x 50 mm
Weight (Card / Package)	1485 g / 2033 g
Afterburner OC	Y
DirectX Version Support	12 API
OpenGL Version Support	4.5
Maximum Displays	4
VR Ready	Y
G-SYNC™ technology	Y
Adaptive Vertical Sync	Y
Digital Maximum Resolution	7680 x 4320
Accessories	Graphics Card Support Bracket x 1

CONNECTIONS



1. DisplayPort
2. HDMI
3. USB Type-C

FEATURES



TORX FAN 3.0

Award-winning fan design combining two different fin designs for cool & quiet gaming.



DOUBLE BALL BEARINGS

Strong and lasting core for the TORX Fan 3.0 to provide years of smooth and silent gaming.



Mastery of Aerodynamics

Using groundbreaking aerodynamic techniques, the heatsink is optimized for efficient heat dissipation.



ZERO FROZR

Eliminates fan noise by stopping the fans in low-load situations so you can focus on your game.



CUSTOM PCB

An optimized PCB design with enhanced power delivery provides a solid base for high performance gaming.



SOLID BACKPLATE

Increases toughness of the card to prevent bending while complementing the design.



RGB Mystic Light

Customize colors and LED effects with exclusive MSI software and synchronize the look & feel with other components.



MSI Afterburner

The ultimate overclocking software with advanced control options and real-time hardware monitor.