

Magnetic Wireless Car Charger

Quick Setup Guide

BE-MVQ3AC1B23

BEST BUY
essentials[™]



Package contents

- Car charger
- *Quick Setup Guide*

Compatibility

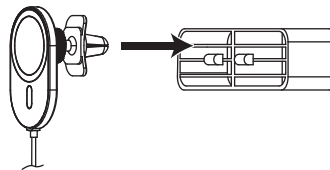
Supports devices with MagSafe compatibility, including iPhone 12 Series, iPhone 13 Series, and iPhone 14 Series with official MagSafe cases

Features

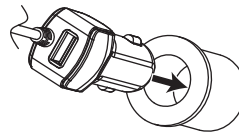
- Wirelessly charge your iPhone 12 Series, iPhone 13 Series, and iPhone 14 Series with official MagSafe cases
- Charges a second device with an included USB port
- Snaps magnetically into place to ensure a secure hold
- Backed by Best Buy

Note: For best results, use without a case, with a thin case, or with a case that has a magnetic MagSafe array.

Attaching your wireless charging pad to a vent



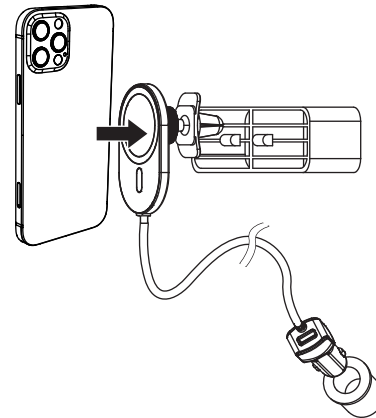
Assembling the car charger to vehicle socket, the LED lights blue



Charging your device

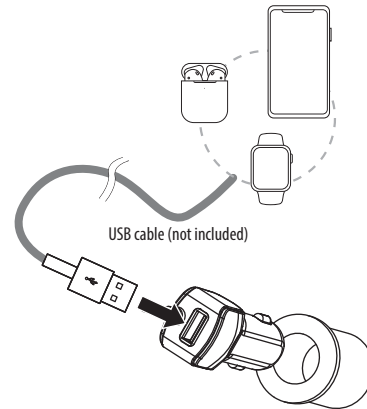
Wireless charging

Place your Magsafe-compatible device on the center of the wireless car charger (with the screen facing out).



Wired charging

- 1 Plug one end of a USB cable (not included) into your car charger's USB port.
- 2 Plug the other end into your other mobile devices. Your car charger automatically begins charging your device and the LED lights blue.



Before using your new product, please read these instructions to prevent any damage.

Troubleshooting

My device is not charging or charges slowly.

- Make sure that your device is positioned in the center of your charging pad.
- Make sure that there are no other objects on the charging pad.
- Try removing your device's case.
- Make sure that your device is MagSafe compatible.
- Using the phone while it is charging will make it charge more slowly.
- Your device may charge more slowly with the charging pad than a charging cable. This is normal.

My device gets warm while charging.

- It is normal for devices to get warm while charging.

Specifications

Note: Performance varies based on settings and environmental conditions, and decreases over time and with use.

Dimensions (H × W × D):

3.6 × 2.3 × 2.8 in. (93.4 × 59.6 × 71.1 mm)

Weight: 4.9 oz. (140 g)

Wireless charging output: 5W/7.5W/10W

USB output: 5W

Safety information

- Do not place metal objects between devices and the wireless charging pads.
- Recharge the portable charger if it has not been used for more than 90 days.
- Risk of fires and burns. Do not open, crush, heat above 140° F (60° C), or incinerate. Follow the manufacturer's instructions.
- Operating environment temperatures: 32~104° F (0~40° C)
- Do not place this device into fire or other excessively hot environments.
- Consult local staff before using the product near medical or industrial equipment or on board an aircraft.
- Unplug the product if not used for an extended period of time.
- Make sure that your mobile phone has wireless charging function before using.
- Make sure that the mobile phone does not move away from the charging pad wireless inductive charging area. Most of the nonmetallic protective cases can be used for charging, and the thickness of the case should not exceed 0.1 in. (3 mm). Make sure that the case contains no metal substances.
- When metal is placed in the charging area, the charging plate automatically recognizes the metal and turns the power off. Normal charging resumes when the metal foreign matter is removed.
- When the temperature of the charging pad is too high, the automatic trickle protection mode starts and the charger turns off. Unplug the power supply first, and then use the charging pad when it returns to a normal temperature.

- People with pacemakers should keep away from the magnets. The magnets can negatively affect the function of the pacemaker.
- Do not place any bank or similar cards with magnetic strips or magnetically sensitive objects on the product. The data on the cards could be damaged or completely deleted.
- Ensure that there are no metal parts on the back of your device. Metal heats up significantly in the field of an induction charger and can damage your device and/or the charger.

Legal notices

FCC compliance

This device complies with part 15 of the FCC Rules. Operation is subject to the following two conditions: (1) This device may not cause harmful interference, and (2) this device must accept any interference received, including interference that may cause undesired operation.

FCC Caution

Changes or modifications not expressly approved by the party responsible for compliance could void the user's authority to operate the equipment.

FCC Statement

This equipment has been tested and found to comply with the limits for a Class B digital device, pursuant to part 15 of the FCC Rules. These limits are designed to provide reasonable protection against harmful interference in a residential installation. This equipment generates, uses, and can radiate radio frequency energy and, if not installed and used in accordance with the instructions, may cause harmful interference to radio communications. However, there is no guarantee that interference will not occur in a particular installation.

If this equipment does cause harmful interference to radio or television reception, which can be determined by turning the equipment off and on, the user is encouraged to try to correct the interference by one or more of the following measures:

- Reorient or relocate the receiving antenna.
- Increase the separation between the equipment and receiver.
- Connect the equipment into an outlet on a circuit different from that to which the receiver is connected.
- Consult the dealer or an experienced radio/TV technician for help.

RF Exposure

This equipment complies with FCC radiation exposure limits set forth for an uncontrolled environment. This transmitter must not be co-located or operating in conjunction with any other antenna or transmitter.

RSS-Gen statement

This device contains licence-exempt transmitter(s)/receiver(s) that comply with Innovation, Science and Economic Development Canada's licence-exempt RSS(s). Operation is subject to the following two conditions:

1. This device may not cause interference.
2. This device must accept any interference, including interference that may cause undesired operation of the device.

Ce dispositif contient des émetteurs exonérés de permis(s)/récepteurs)s qui sont conformes aux RSS (s) exemptés de licence du Canada. L'opération est soumise aux deux conditions suivantes :

1. Cet appareil peut ne pas causer d'interférences.
2. Ce dispositif doit accepter toute interférence, y compris les interférences qui peuvent provoquer un fonctionnement indésirable de l'appareil.

RSS-102 Statement

This equipment complies with IC RSS_102 radiation exposure limits set forth for an uncontrolled environment.

Cet équipement est conforme aux limites d'exposition aux radiations IC CNR_102 établies pour un environnement non contrôlé.

One-year limited warranty

Visit www.bestbuy.com/bestbuyessentials for details.

Contact Best Buy essentials

For customer service, call 866-597-8427 (U.S. and Canada)

www.bestbuy.com/bestbuyessentials

iPhone is a trademark of Apple Inc., registered in the U.S. and other countries

Best Buy essentials is a trademark of Best Buy and its affiliated companies. Distributed by Best Buy Purchasing, LLC
7601 Penn Ave South, Richfield, MN 55423 U.S.A.
©2022 Best Buy. All rights reserved.