



20810 Sockeye Pl #200  
Bend, OR 97701

Support and Sales Questions:

Tel: (866) 977-6688 Monday to Friday 9AM to 5PM Pacific Time  
or email [support@evogimbals.com](mailto:support@evogimbals.com)

[EVOGimbals.com](http://EVOGimbals.com)

EVO  
GIMBALS  

---

SHIFT

English Manual V2.0



## CONTENTS

Important Message	1
Overview	3
Getting Started	4
Operating Modes	7
Charging Your SHIFT	9
USB Connection	10
APP Operation	11
Wireless Remote	13
Specifications	14
Warranty	15

Thank you for choosing EVO Gimbals as your camera stabilization solution! We know that buying a new product can be very exciting and we are sure that you probably can not wait to use your new gimbal! Before you start PLEASE read this manual and become familiar with your gimbal's components and operating modes.

We highly encourage everyone to also watch our great tutorial videos on our website as a supplement to this manual.

### Battery Safety

Your Gimbal comes with (1) pre-installed Lithium Ion Battery. Here are some simple safety precautions you can take to ensure the best performance for your gimbal's battery.

- Always handle your gimbal with care.
- Always store your gimbal in a cool dry and well ventilated area.
- Never throw your batteries or gimbal in the trash! Always be sure to recycle them at the appropriate battery recycling center.

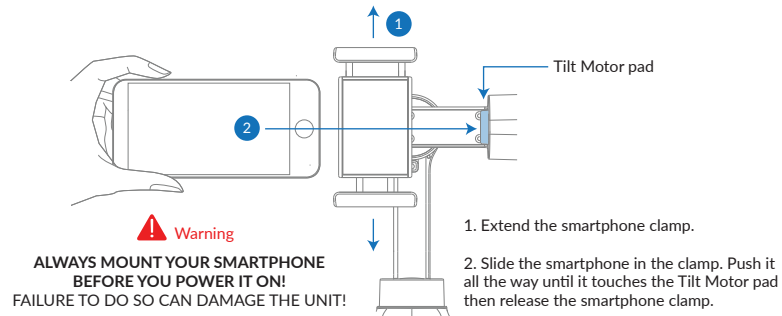
Lithium-Ion batteries should not be exposed to extreme temperatures. Heat and cold stress the batteries. Always charge and use your batteries at room temperature. If the battery has been exposed to extreme temperatures, allow the battery to return to room temperature before charging it or using it.

### WARRANTY

Your new gimbal comes with a 1 Year Parts & Labor warranty. Be sure to register your warranty by registering online at [EVOGimbals.com](http://EVOGimbals.com)

### LATEST INFORMATION

For the latest user manuals, tutorial videos, firmware and calibration instructions please visit our official webpage at [EVOGimbals.com](http://EVOGimbals.com)



### Important!

Your SHIFT has an electronic gyroscope that can be affected by temperature. Always ensure proper startup calibration to ensure the best performance. Please refer to our tutorials videos on [EVOGimbals.com](http://EVOGimbals.com) for more information on proper setup, startup and maintenance calibration.



Thank you for choosing EVO Gimbals! Before you begin please be sure to unpack your SHIFT and review your contents list!

## 1 UNPACK SHIFT

Your SHIFT should be packed with the following items:



EVO SHIFT Gimbal



Micro USB Cable



Manual

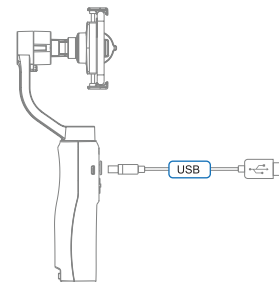


Year U.S. Warranty

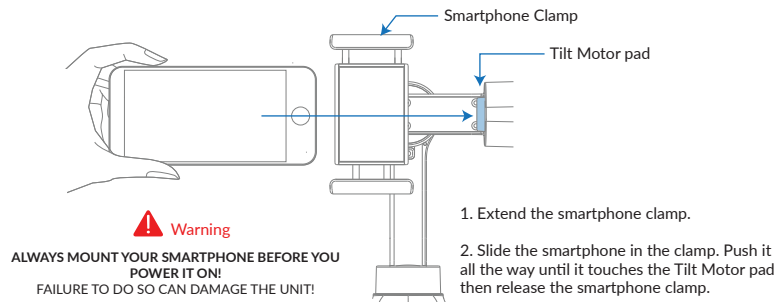
Please check that all items are included, if you are missing any items or components please contact EVO Gimbals.

## 2 CHARGING YOUR SHIFT

Your new gimbal comes with built in charging capabilities. Use the provided Micro USB cable with any standard USB power source to charge your gimbal's batteries. Charging time takes approximately 2-2.5 hours.



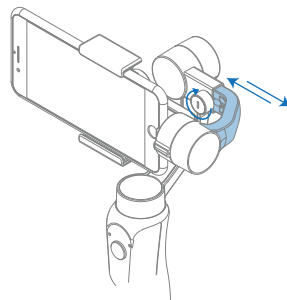
## 3 MOUNT SMARTPHONE



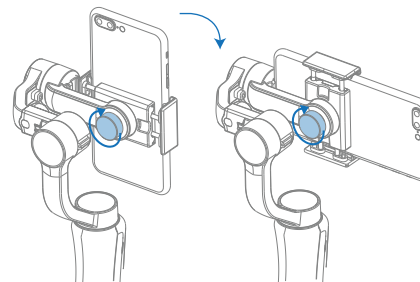
## 4 BALANCE YOUR SMARTPHONE

With the gimbal upright, begin balancing the Tilt Axis by slightly loosening the Tilt Axis arm thumbscrew.

Slide the arm in or out until the smartphone stays balanced.



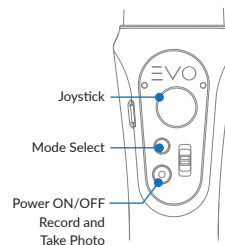
## 5 VERTICAL (PORTRAIT MODE)



Loosen the Smartphone Clamp Thumb Screw on the back, then rotate the clamp with the smartphone mounted to the desired direction (either in horizontal or vertical).

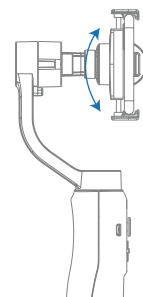
Tighten the Thumb Screw to ensure normal operations.

## 6 OPERATION



To Power on the SHIFT, Press & Hold the power button for 3-4 seconds, the motors will automatically power on in the Pan Follow Mode.

To switch Modes, single click the Mode Select button to switch between Pan Follow Mode and Lock Mode. Double click the mode button to enter Pan and Full Follow Mode.

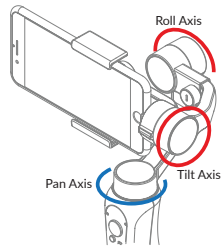
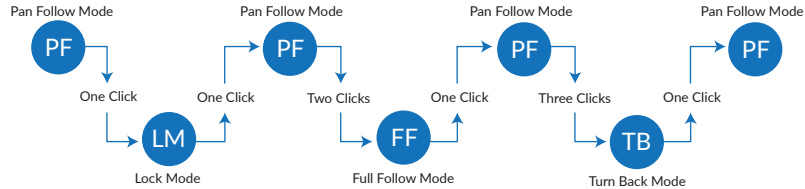


To adjust the smartphone Tilt angle, push up or down on the joystick while in Pan Follow Mode or Lock Mode.

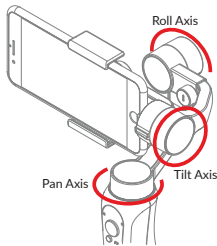
To adjust the smartphone Pan angle, push left or right on the joystick while in Lock Mode.

To adjust the smartphone Roll angle, push the joystick left or right while in Pan Follow mode or Full Follow mode.

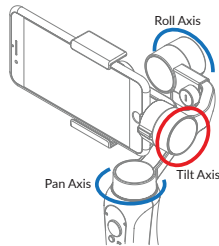
The SHIFT enters Pan Follow Mode (PF) by default each time when powered on. Switch into Lock Mode (LM) by single pressing on Joystick. Double press Joystick to enter Full Follow Mode (FF). Triple press Joystick to enter Turn Back Mode (TB - 180° rotation on Pan axis). Single press Joystick while in Lock Mode, Full Follow Mode or Turn Back Mode will return to the Pan Follow Mode.



**Pan Follow Mode (PF):** The camera pans left/right following the movement of the stabilizer while the tilt and roll axes are locked. Push the joystick up/down allows manual control of the tilt axis.

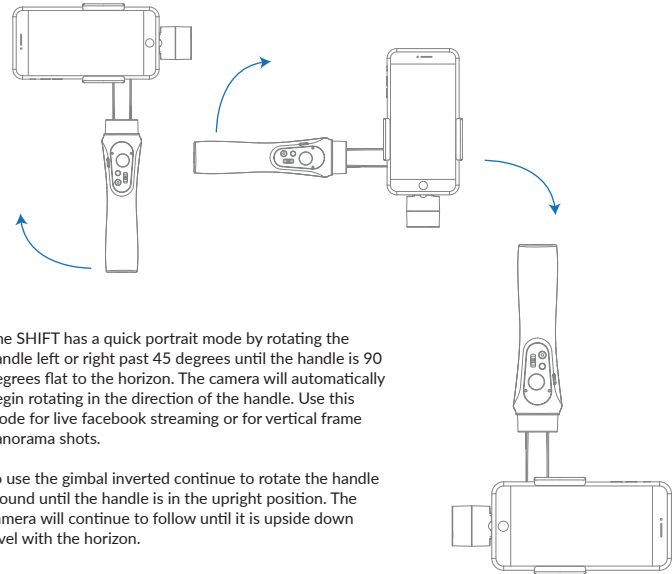


**Lock Mode (LM):** This mode locks movement of all three axes to keep the camera fixed on a shooting direction. Push the joystick up/down and left/right allows manual control of the tilt axis and pan axis.



**Full Follow Mode (FF):** The camera pans and tilts following the movement of the stabilizer. Push the joystick left/right allows manual control of the roll axis.

## PORTRAIT AND INVERTED MODE

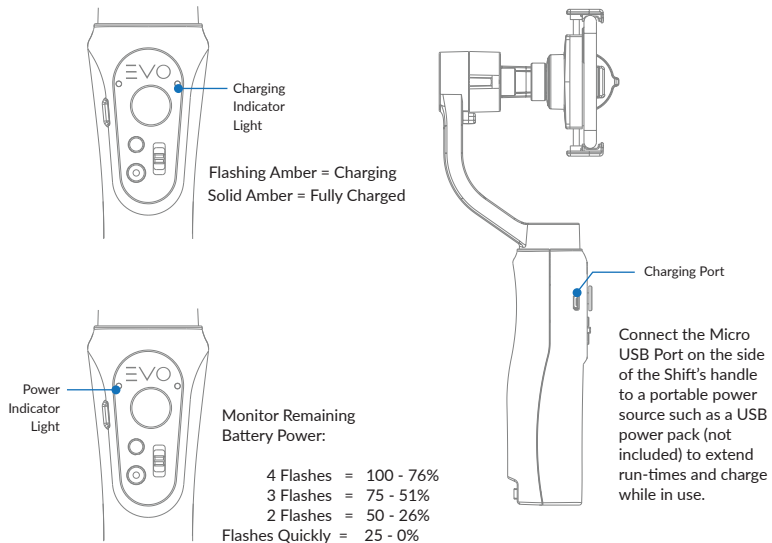


The SHIFT has a quick portrait mode by rotating the handle left or right past 45 degrees until the handle is 90 degrees flat to the horizon. The camera will automatically begin rotating in the direction of the handle. Use this mode for live facebook streaming or for vertical frame panorama shots.

To use the gimbal inverted continue to rotate the handle around until the handle is in the upright position. The camera will continue to follow until it is upside down level with the horizon.

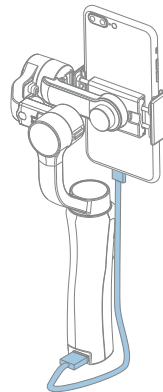
For additional information and video tutorials on switching between modes and their intended uses please go to [EVOGimbals.com](http://EVOGimbals.com)

Connect the Micro USB Port on the side of the handle to any standard USB outlet or phone charger using the included Micro USB cable. Batteries take approximately 2.5 hours to fully charge. Shorter charge times can be achieved using higher mA rating AC/DC adapter.



### MOBILE CHARGING

The USB Port at the bottom of the stabilizer handle can be used to charge your smartphone while in use on the stabilizer.



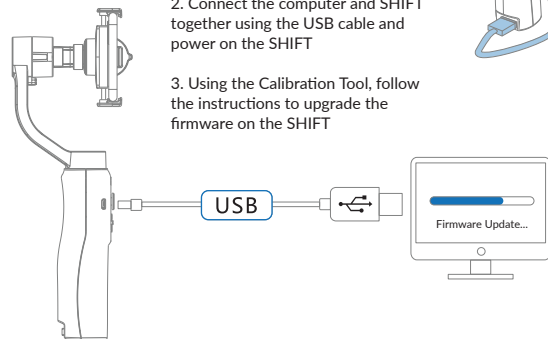
### FIRMWARE & SOFTWARE UPDATES

Connect the SHIFT to your computer via Micro USB cable for the firmware upgrade and calibration.

1. Visit [EVOGimbals.com](http://EVOGimbals.com) and click "Downloads" in the top menu and find the SHIFT Gimbal. Download and Calibration Tool, the latest firmware version and USB Driver that works with your computer.

2. Connect the computer and SHIFT together using the USB cable and power on the SHIFT

3. Using the Calibration Tool, follow the instructions to upgrade the firmware on the SHIFT



## EVO GIMBALS REMOTE APP DOWNLOAD

Download the EVO Gimbals Remote App from either the Apple App Store or Google Play.



 The EVO Gimbals Remote App is subject to regular updates.

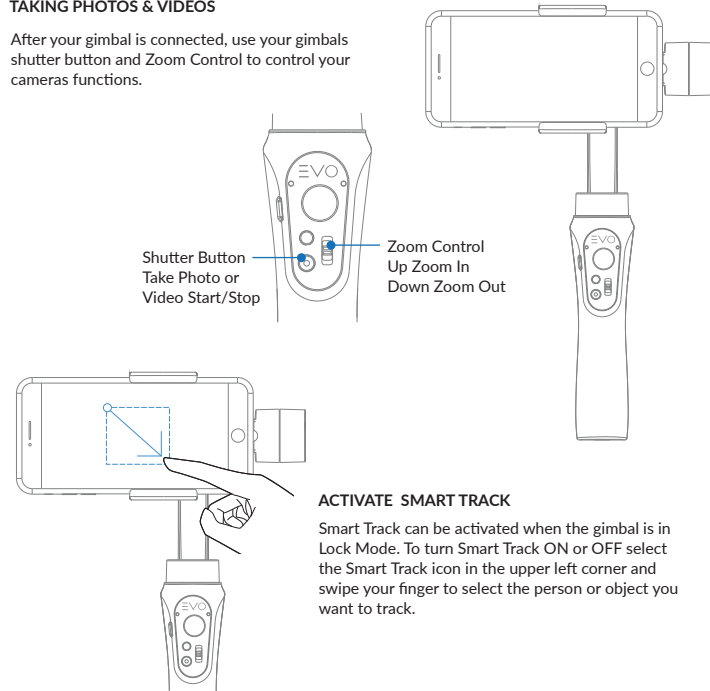
## Connecting the Stabilizer to Smartphone

1. Power on the stabilizer.
2. Confirm Bluetooth is activated on your smartphone.
3. Open the EVO Gimbals Remote App on your phone.
4. Tap on the Connect Your Device button and search for nearby signals, choose your stabilizer to connect.



## TAKING PHOTOS &amp; VIDEOS

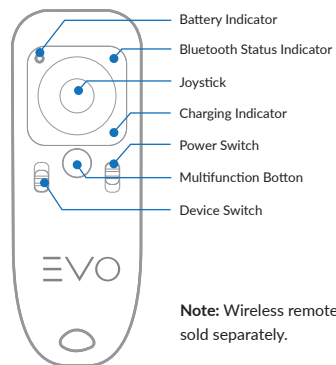
After your gimbal is connected, use your gimbals shutter button and Zoom Control to control your cameras functions.



## ACTIVATE SMART TRACK

Smart Track can be activated when the gimbal is in Lock Mode. To turn Smart Track ON or OFF select the Smart Track icon in the upper left corner and swipe your finger to select the person or object you want to track.





**Note:** Wireless remote sold separately.

#### Battery Indicator

4 Flashes = 100 - 76%  
 3 Flashes = 75 - 51%  
 2 Flashes = 50 - 26%  
 Flashes Quickly = 25 - 0%

#### Charging Indicator

Red = Charging  
 Green = Fully Charged

#### Device Switch

UP = Remote Control  
 DOWN = Smartphone Control

### WIRELESS REMOTE PAIRING INSTRUCTIONS

1. Place remote within 5 feet of gimbal.
2. Hold down the multifunction button while switching on the power switch.
3. Bluetooth Indicator light will rapidly flash while connecting. Bluetooth Indicator light will turn solid when connected successfully.

#### Joystick

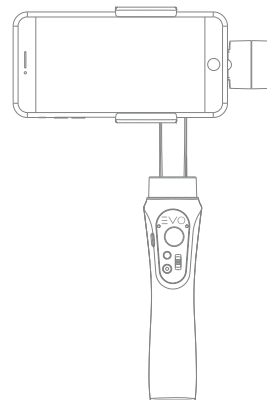
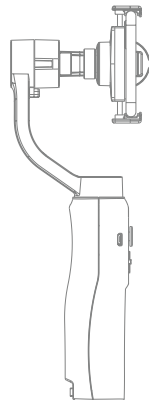
The Remote Joystick has a built in Mode Select by pressing down. Please see page 7 for Mode Select details.

#### Multifunction Button

Single click to return gimbal to original position.

#### Remote Specifications:

Charging Voltage: 5V  
 Battery Life: ~30 Hours  
 Battery Capacity: 150mAh  
 Transmit/Receive Current: 11.9mA  
 Normal Operating Current: 2.8mA  
 Max Control Distance: ~30' Feet



Dimensions (mm):  
 Operating Current:  
 Operating Temperature:  
 Run-Time:  
 Gimbal Weight:  
 Smartphone Payload:  
 Controllable Tilt Angle:  
 Controllable Roll Angle:  
 Controllable Pan Angle:  
 Battery:  
 Charging Voltage:  
 Charger Current:  
 USB Charger Input Voltage:

Length: 120 Width: 105 Height: 295  
 4.2mA  
 5F°-115F° (-10C°-45C°)  
 12h  
 450g (unloaded)  
 75g-200g  
 -135°-+185°  
 -30°-+30°  
 360° Unlimited  
 Li-Ion 26500  
 5V  
 1500mA  
 5V USB

EVO Gimbals ("EVO Gimbals") warrants this product against defects in material or workmanship for the time periods and as set forth below. Pursuant to this Limited Warranty, EVO Gimbals will, at its option, (i) repair the product using new or refurbished parts or (ii) replace the product with a new or refurbished product. For purposes of this Limited Warranty, "refurbished" means a product or part that has been returned to its original specifications. In the event of a defect, these are your exclusive remedies.

**Labor:** For a period of one (1) year from the original date of purchase of the product ("Labor Warranty"), EVO Gimbals will, at its option, repair or replace with new or refurbished product, product determined to be defective. If EVO Gimbals elects to replace the product after this Labor Warranty has expired but while the Parts Warranty below is still in effect, it will do so for the applicable labor charge.

**Parts:** For a period of one (1) year from the original date of purchase of product ("Parts Warranty"), EVO Gimbals will supply new or refurbished replacement parts in exchange for parts determined to be defective.

This Limited Warranty covers only the hardware components packaged with the Product. It does not cover technical assistance for hardware or software usage and it does not cover any software products whether or not contained in the Product; any such software is provided "AS IS" unless expressly provided for in any enclosed software Limited Warranty. Please refer to the End User License Agreements included with the Product for your rights and obligations with respect to the software.

**Instructions:** To obtain warranty service, you must deliver the product, freight prepaid, in either its original packaging or packaging affording an equal degree of protection to the EVO Gimbals authorized service facility specified. It is your responsibility to backup any data, software or other materials you may have stored or preserved on your unit. It is likely that such data, software, or other materials will be lost or reformatted during service and EVO Gimbals will not be responsible for any such damage or loss. A dated purchase receipt is required. For specific instructions on how to obtain warranty service for your product, visit Our Official Web Site: [EVOGimbals.com](http://EVOGimbals.com)

Or email EVO Gimbals Customer Support  
[support@evogimbals.com](mailto:support@evogimbals.com)

For an accessory or part not available from your authorized dealer please visit our website.

**Repair / Replacement Warranty:** This Limited Warranty shall apply to any repair, replacement part or replacement product for the remainder of the original Limited Warranty period or for ninety (90) days, whichever is longer. Any parts or product replaced under this Limited Warranty will become the property of EVO Gimbals.

This Limited Warranty only covers product issues caused by defects in material or workmanship during ordinary consumer use; it does not cover product issues caused by any other reason, including but not limited to product issues due to commercial use, acts of God, misuse, limitations of technology, or modification of or to any part of the EVO Gimbals product.

This Limited Warranty does not cover EVO Gimbals products sold AS IS or WITH ALL FAULTS or consumables (such as fuses or batteries). This Limited Warranty is invalid if the factory-applied serial number has been altered or removed from the product. This Limited Warranty is valid only in the United States.

**LIMITATION ON DAMAGES:** EVO GIMBALS SHALL NOT BE LIABLE FOR ANY INCIDENTAL OR CONSEQUENTIAL DAMAGES FOR BREACH OF ANY EXPRESS OR IMPLIED WARRANTY ON THIS PRODUCT.

**DURATION OF IMPLIED WARRANTIES:** EXCEPT TO THE EXTENT PROHIBITED BY APPLICABLE LAW, ANY IMPLIED WARRANTY OF MERCHANTABILITY OR FITNESS FOR A PARTICULAR PURPOSE ON THIS PRODUCT IS LIMITED IN DURATION TO THE DURATION OF THIS WARRANTY.

Some states do not allow the exclusion or limitation of incidental or consequential damages, or allow limitations on how long an implied warranty lasts, so the above limitations or exclusions may not apply to you. This Limited Warranty gives you specific legal rights and you may have other rights which vary from state to state.

**WARRANTY PERIOD:**

The warranty period is (1) Year from the original date of purchase. During this warranty period, under normal use, EVO Gimbals will at its option, repair and/or replace parts determined to be defective.

**WARRANTY DOES NOT COVER:**

1. Any unauthorized maintenance, misuse, collision, liquid infiltration (water damage), or modifications.
2. Incorrect Use of Product: altering software, removing serial numbers/logos, using cameras not approved by EVO.
3. Damage due to fire, flood, acts of God, misuse and related damage.
4. Any prepaid freight for warranty service.

**WARRANTY SERVICE:**

If any product issues arise please contact your dealer first. Many gimbal performance problems can be solved with a simple calibration sequence. Be sure to visit [www.EVOGimbals.com](http://www.EVOGimbals.com) for the latest tutorial videos.

If it is found that service on your gimbal is needed please visit our official website ([www.EVOGimbals.com](http://www.EVOGimbals.com)) or email us [support@evogimbals.com](mailto:support@evogimbals.com) to start a warranty claim.

**WARRANTY REGISTRATION:**

Please register your warranty so we can provide you with the latest firmware updates, user manuals and tutorial videos. To register your warranty please and/or obtain warranty service for your gimbal, visit Our Web Site: [EVOGimbals.com](http://EVOGimbals.com)