

© Arlo Technologies, Inc. Arlo, Arlo logo, and Every Angle Covered are trademarks of Arlo Technologies, Inc. Any other trademarks are for reference purposes.

Si ce produit est vendu au Canada, vous pouvez accéder à ce document en français canadien à [arlo.com/docs](https://www.arlo.com/docs).

(If this product is sold in Canada, you can access this document in Canadian French at [arlo.com/docs](https://www.arlo.com/docs).)

For regulatory compliance information including the EU Declaration of Conformity, visit [www.arlo.com/about/regulatory/](https://www.arlo.com/about/regulatory/).

**CE** Arlo Technologies Intl. Ltd  
Ground Floor, Building 3  
University Technology Centre  
Curraheen Road, Cork T12 EF21 Ireland



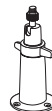
## Solar Panel Charger

### What's in the box

---



Solar panel  
with cable



Mount



Mounting  
screws



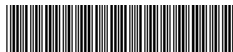
Cable holder



Double-sided  
tape

May 2020

Arlo Technologies, Inc.  
2200 Faraday Avenue, Suite 150  
Carlsbad, CA 92008 USA

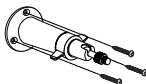


201-50328-01

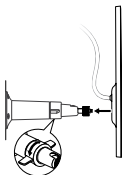
# Set up your Solar Panel Charger

---

1. Install the mount near your camera.

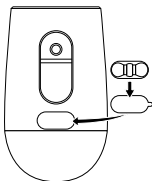


2. Attach your solar panel to the mount.



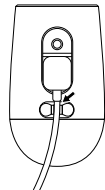
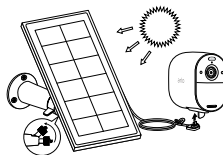
3. Remove the backing from one side of the double-sided tape and stick the tape onto your camera near the charging port.

4. Remove the backing from the other side of the tape and press the cable holder onto the tape.



5. Make sure that the cable holder is securely attached to your camera.

6. Connect the solar panel cable to your camera's micro USB charging port and press the cable into the cable holder.



## Need help?

---

We are here for you.

Visit [www.arlo.com/support](http://www.arlo.com/support) for quick answers and resources:

- How-to videos
- Troubleshooting tips
- The Arlo Support phone number for your location