

USER'S MANUAL



CONVERTER BOX

For questions, contact "support@mediasonicusa.com".

Content

Package content.....	1
Safety warning.....	2-3
Overview of the equipment.....	4-7
1. Panel overview	4
2. Cable connection	5
3. Remote control unit.....	6-8
INFO key.....	7
AUDIO key.....	7
CC key.....	7
PREV/NEXT & F.R./F.F key.....	7
EPG key.....	8
OK/(LIST) key.....	8
FAV key.....	8
Menu operation.....	9-14
1. Program.....	9
2. Picture.....	10
3. Channel search.....	10-11
4. Time setting.....	12
5. Option.....	12
6. System setup.....	13-14
7. USB.....	14
Music.....	14
Photo.....	14
Movie.....	14
PVR.....	14
PVR (TV Recording).....	15-16
1. Time shift.....	16
2. Recording.....	15-16
Appendix.....	17-18
1. Troubleshooting.....	17
2. Specifications.....	18

Package Content



Unit



Remote Control



User Manual



A/V Cable



HDMI Cable



IR Receiver



USB-C Cable

Safety Warning

FCC Notice

This equipment has been tested and found to comply with the limits for a Class B digital device, pursuant to part 15 of the FCC rule. These limits are designed to provide reasonable protection against harmful interference in a residential installation. This equipment generates, uses and can radiate radio frequency energy and, if not installed and used in accordance with the instructions, may cause harmful interference to radio communications. This is no guarantee that interference will not occur in a particular installation. If this equipment does cause harmful interference to radio or television reception, which can be determined by turning the equipment off or on, the user is encouraged to try to correct the interference by one or more of the following measures:

- Reorient or relocate the receiving antenna
 - Increase the separation between the equipment and receiver
 - Connect the equipment into an outlet on a circuit different from that to which the receiver is connected
 - Consult the dealer or an experienced radio/TV technician for help
-

Important Safety Instructions



To reduce the risk of electric shock,
Do not remove cover.
No user-serviceable parts inside. Refer servicing to qualified service personnel.



This symbol indicates "dangerous voltage" inside the product that presents a risk of electric shock or personal injury.



This symbol indicates important instructions accompanying the product.

1. Read, follow and keep these instructions.
2. Do not use this apparatus near water.
3. Clean only with a damp cloth. Please unplug power prior to cleaning.
4. Do not block any of the ventilation openings. Install in accordance with the manufacturer's instructions.
5. Do not install near any heat sources such as radiators, heat registers, stoves, or other apparatus (including amplifiers) that produce heat.
6. Protect the power cord from being walked on or pinched particularly at the plug, receptacles, and the point where they exit from the apparatus.
7. Only use attachments/accessories included within this package.
8. Unplug this apparatus during lightning storms or when unused for long periods of time.
9. Refer all servicing to qualified service personnel. Servicing is required when the apparatus has been damaged in any way; such as when the power supply cord or plug is damaged, liquid has been spilled or objects have fallen into the apparatus, the apparatus has been exposed to rain or moisture, does not operate normally, or has been dropped.

A Class II APPARATUS shall be permanently marked with the words "DOUBLE INSULATION" or "Double Insulated" and "When servicing use only identical replacement parts."

WARNING: To reduce the risk of fire or electric shock, do not expose this apparatus to rain or moisture.

Safety Warning

Precautions

Please read these precautions before operating this unit.

1. Power cord protection

To avoid any malfunctions of the unit, and to protect against electric shock, fire or personal injury, please observe the following.

- Hold the plug firmly when connecting or disconnecting the AC power cord.
- Keep the AC power cord away from heating appliances.
- Never put any heavy object on the AC power cord.
- Do not attempt to repair the AC power cord in any way.
- Never make or change connections with the power switched on.

2. Placement

Avoid placing the unit in areas of:

- Direct sunlight or heating radiators
- High temperature (over 35°C) or high humidity (over 90%)
- Dust as the internal parts may be seriously damaged.

3. Non-use periods

When the unit is not being used, turn it off. When left unused for a long period of time, the unit should be unplugged from the power source.

4. No fingers or other objects inside

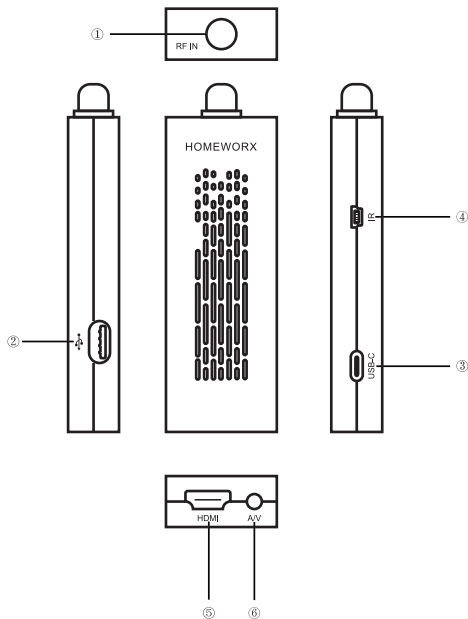
- Touching internal parts of this unit is dangerous, and may cause serious damage to the unit. Do not attempt to disassemble the unit.
- Do not put any foreign object in this unit.

5. Keep away from water

- Keep the unit away from flower vases, tubs, sinks, etc. if liquids are spilled into the unit, serious damage could occur.

Overview Of The Equipment

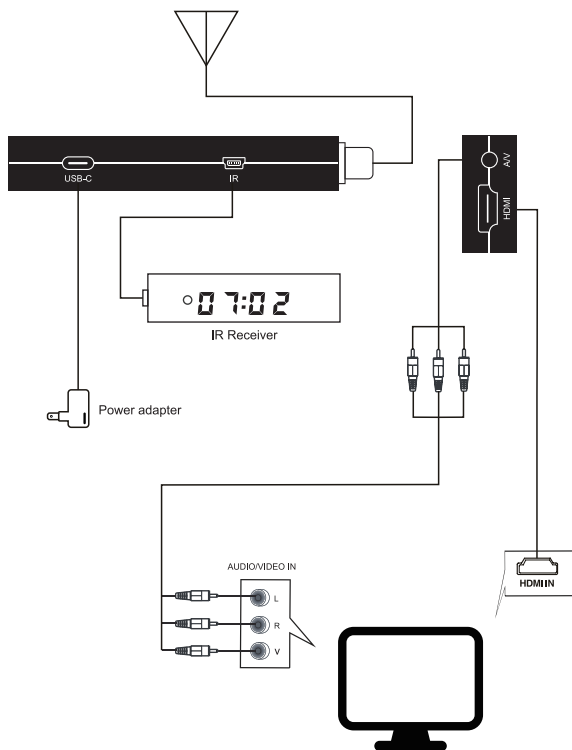
Panel Overview



- 1) **RF IN**: connect to antenna.
- 2) **USB-A**: connect to HDD or USB Flash Drive (for firmware update only).
- 3) **USB-C**: DC 5V/3A
- 4) **IR**: connect to IR receiver.
- 5) **HDMI**: high definition multimedia output.
- 6) **A/V**: audio and video output.

Cable Connections

Cable Connection



Overview Of The Equipment

Remote Control Unit



The remote key list:

- **STANDBY:** Press to turn on or standby.
- **CC:** Press to turn on/off closed captioning.
- **EPG:** Electronic Program Guide.
- **MUTE:** Press to mute the sound of TV audio, press again will restore the sound.
- **◀▶:** Rev/Fwd
- **◀▶:** Prev/Next
- **⏸ Pause:** Press to pause playback or recording
- **■ Stop:** Press to stop playback or recording
- **USB:** Press to view content of connected external USB Hard Drive.
- **TV LIST:** Press to view all TV channels or all Radio channels.
- **ASPECT:** Press to adjust picture scale.
- **TIMER:** Press to go to Programmed Time Recording setup.
- **MENU:** Press to display the Main Menu on the screen.
- **EXIT:** Press to return to the previous menu.
- **OK:** Confirm
- **▲/▼:** Move cursor up/down or channel + /channel -
- **◀/▶:** Move cursor left/right or volume + /volume -
- **FAV:** Press to display the favorite channel's list for setting.
- **HOLD:** This is a Control Key under USB/Video and PVR mode.
- **GOTO:** Search time in multimedia status.
- **INFO:** Show/Hide service info:
Press one time a service info bar will appear; second time press will show Detail Info; third time press will show Program Info.
- **AUDIO:** Switch Audio channel
- **REPEAT:** Press to repeat the current options.
- **REC:** Press to start recording.
- **RECALL:** Press to switch between current & last TV channel.
- **0 - 9:** Press to enter the required numbers in the input box or select a channel to watch; Press directly to tune a particular channel.
- **HDMI:** Adjust resolution

Overview Of The Equipment

INFO. key

Press "INFO" button on remote to display the information box while watching TV programs. Press "INFO" button twice for quality bar.



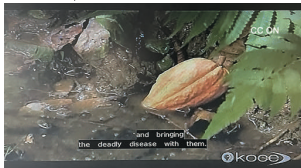
AUDIO key

Some programs may have multilingual audio language and this audio broadcast may be on a different audio mode such as Stereo, Left or Right. All the available audio languages will be displayed on the audio track window when you press the L/R key. The screenshot illustrates this below. If there is no audio output after you have selected the audio language, it indicates that there is no audio on the current audio mode, so you have to select the previous audio mode.



CC key

Certain programs have multilingual subtitle information. All available subtitle languages will be displayed in the subtitle information window when you press the CC key. The screenshot illustrates this below. Follow the help information in the subtitle window to select preferred subtitle.



◀◀ & ▶▶ (PREV / NEXT) key & I◀◀ & ▶▶I (F.R. / F.F) key

The PREV/NEXT key and F.R./F.F. key can be used during playback of multimedia programs from your external USB device. Press the PREV/NEXT key to go to the previous/next program and F.R./F.F. key to fast forward or rewind during playback.

Overview Of The Equipment

EPG key

Press EPG key to display the on screen electronic program guide.



OK/(LIST) key

Press OK key to display all TV channels



FAV key

Setting up Favorite TV

You can add preferred channels to a favourite's channel list. Press the Menu key to access the Program Edit Menu. The Favourite channel option allows you to classify the channels by different genre: Movies/News/Sports/Music. Press the "FAV" or "OK" key to confirm your selection. A heart shaped symbol will appear next to that channel which confirms your selection.



Disable Favourite TV or Radio Channel:

Press the Menu key to access the Program Edit Menu. The list of the favourite channels will be displayed. Highlight the desired channel to be disabled. Press "FAV" button, select the "Disable" option and press the "FAV" or "OK" key to cancel. Press the "Exit" key to exit the menu.

Menu Operation

Press MENU key to display the main menu. It consists of 7 items as following:

- Program
- Picture
- Channel Search
- Time Setting
- Option
- System
- USB



Figure 1

Note: In any page of the menu, you can use EXIT key to return to previous menu page, or press MENU key switch to Main Menu page and then press MENU key again to exit Main Menu.

Program

Press ▼ key first, then press ► key, enter into Program setting menu. (password: 000000)



Figure 2



Figure 3

Choose the menu as per request (Move/Skip/Lock/Delete/FAV/Rename).



Figure 4

Menu Operation

Picture



Figure 5

Aspect Ratio: AUTO, 16:9 Pillar Box, 16:9 Pan & Scan, 4:3 Letter Box, 4:3 Pan & Scan, 4:3 Full, 16:9 Wide Screen
Resolution: 480i, 480p, 720p, 1080i & 1080p (60Hz)

Channel Search

1. Auto Search 2. Manual Search 3. Country 4. RF Output 5. Signal Type(Air Cable)

Use ▲ & ▼ keys to move up and down from one item to another, and press ► key to display corresponding sub-menu.

Auto Search

In the Main menu, use ▲ & ▼ keys to select Auto Search item, and press ► key to enter into Auto Search menu.

Works with clear QAM or unencrypted cable signal.



Figure 6



Figure 7

Manual Search

In the Main menu, use ▲ & ▼ keys to select Auto Search item, and press ► key to enter into Manual Search menu.



Figure 8



Figure 9

Menu Operation

1. You can press the number keys into channel, or press directional keys to choose.
2. Suggestion using auto channel search
3. Press EXIT to quit



Figure 10

Country

In the Main menu, use ▲ & ▼ keys to select Auto Search item, and press ► key to enter into Country menu to select different countries.



Figure 11

Menu Operation

Time Setting

Time Zone: select Time and Timezone.

Sleep: press ► key to select the Sleep Time (1~12hours).

Power ON/OFF: press ► key into the setting menu, select Power ON Time or Power OFF Time.



Figure 12



Figure 13

Option

OSD Language: English, Spanish, French



Figure 14



Figure 15

Close Caption

CC option list:

CC Display	CC OFF, CC1, CC2, CC3, CC4, CC5, CC6
CC Position	Auto, Top, Bottom
Front Size	Default, Small, Medium, Large
Front Color	Default, White, Black, Red, Green, Blue, Yellow, Magenta, Cyan
BG Color	Default, White, Black, Red, Green, Blue, Yellow, Magenta, Cyan
CC Transparency	Default, Solid Transparent, Transparent

Menu Operation

System Setup

In main menu, select System and press **OK** to enter into System Setup menu.
Press **▲** & **▼** to select item and **►** key to enter into sub menu or change current item setting.

1. **Parental Guidance:** Press **►** key when this item is highlighted, input password.



Figure 16



Figure 17

Select Rating Region:



Figure 18



Figure 19

2. **Set Password:** Press **►** key when this item is highlighted. (Figure 19)

-> Input old password (Default 000000)

-> Input new password

If new password was set but forgotten, the box has to be sent back to factory to reset.

3. **Restore Factory Default:** Restore system setting parameter to default if you press **►** key when this item is highlighted.

* Default password is 000000



Figure 20

4. **Information:** showing system information.

Menu Operation

5. **Software Update:** Insert USB disk select the upgrade file, press the right directional key to upgrade, make the sure the unit stays on while the upgrade is processing.
For details, please contact "support@mediasonicusa.com".



Figure 21

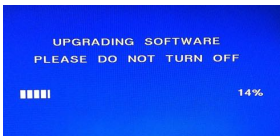


Figure 22

USB

Multimedia

MENU=>Multimedia You can now select to view Photos, play MP3 music files and view Movie files via the multimedia player. Known supported files are outlined below.
NTFS, FAT32 and FAT16 file systems are supported.

Player	Supported file
Photo	JPEG, BMP, PNG
Music	*.mp3, *.aac
Movie	*.avi, *.mpg, *.dat, *.vob, *.mkv, *.mjpeg (May not work with some video and audio codec format)



Figure 23



Figure 24

Music: You can choose your favorite songs, fast forward & fast rewind, stop and play, go to, REPEAT.

Photo: After choose the specific picture from the preview file, you can press the "Enter" key for the full screen. And press "Play" key enter the slide show mode; if you want the slide show go with music, you need to play the music first and then open the picture, then you will go with slide show + music.

Movie: You can choose any movie or song as you like, change last and next, fast forward & fast rewind, play and stop, goto, REPEAT and so on. Press the "PLAY" key enter the full screen status.

PVR: Depends on user's choose, there are some functions like remove/edit/delete and so on. Play/stop/last/next/fast forward/fast rewind/ repeat all these functions can be done with the remote, just according to what the user's request. If you press the remote's "HOLD" key, you will enter the "Full Screen" status.

Photo Configure

Here you can choose slide time, mode and aspect ratio (See figure 25)



Figure 25

PVR (TV Recording)

Recording

1. Instant Recording

Press the remote's "REC" key to enter recording, press "STOP" when completed.



Figure 26



Figure 27

2. Scheduled Recording

Press "EPG" on current channel(Figure 27), select a program and press "OK" to go into schedule(Figure 28), change date and time if necessary and press the "OK".



Figure 28

-> Do not change channel number.

-> To playback, select the program, press "OK" to preview and press "HOLD" for full screen.



Figure 29

PVR (TV Recording)

PVR

Select record device, partition.



Figure 30



Figure 31

Please be advise that all your recording contents are for your personal enjoyment purpose only, they can not be used for commercial, distribution & public showing purpose.

Timeshift

Press "PAUSE" to halt for 30 min max.

Press "PLAY" to resume watching.

Press FF (Fast Forward) to skip commercials.

Press "STOP" to exit.

After "STOP" is pressed, it won't be able to be playbacked.



Figure 32

If you press the INFO key, you can access the TIMESHIFT information screen.

Appendix

Troubleshooting

If you have difficulty with your digital TV set-top receiver, there are several possibilities you should investigate before calling for a service technician.

Problem	Possible Causes	What To Do
The display on the front panel does not light up	Power cord is not connected	Check that the power cord is plugged into power socket
No sound and no picture	The receiver is under standby	Press POWER key on the front panel to switch to operation mode
No signal when selecting channels	The antenna is disconnected	Check antenna connection
	Program parameters are set incorrectly	Set correct parameters
Picture only ,but no sound	Audio cable is not connected securely	Connect it securely
	System in MUTE mode	Press MUTE key on the RCU to restore volume
	Volume is set to minimum	Increase the volume to suitable level
	Audio setting parameter is wrong	Please go to Audio Setting menu, select proper audio mode and proper audio language
Sound only, but no picture	Video cable is not connected securely	Connect the video cable securely
	The current channel is in radio mode	Normal
Video and audio mismatch or abnormal sound	Audio channel is not set correctly	Select proper Audio channel
Picture is still or mosaic phenomenon	Signal is too weak	Check to make sure that the signal cord has been connected tightly
Remote control unit does not work	RCU is not aimed at the sensor on the front panel	Aim at the sensor on the front panel
	Not enough power in the battery of the remote control	Change battery

CAUTION: If the problems are still unsolved after you're done all of these. Do not disassemble the STB yourself! Please contract the dealer, or a trained personnel for assistance.

Appendix

Specifications

Tuner

RF output Connector	F Type jack
Loop through	57-803MHz

Demodulation

Standard	NTIA standard, 8VSB
Guard Interval Modes	1/32,1/16,1/8,1/4 Active Symbol duration
FEC Modes Rate	1/2,2/3,3/4,5/6,7/8
Carriers/Constellation	All modes supported including non hierarchical
Demodulation	COFDM(QPSK/QAM16/QAM64) 2K and 8K
Channel bandwidth	6 MHz

Video Decoder

Standard	ISO/IEC 13818-2 and ISO/IEC 14496-10
Transport stream	ISO/IEC 13818-1
Video decoding	MPEG-2 SD/HD (<u>MP@ML</u> , <u>MP@L3</u> and <u>HP@L4</u>), MPEG-4 H.264/AVC SD/HD DivX 4.X ~ 5.X JPEG,BMP,PNG, Motion JPEG AVI, VOB, MOV, MKV
Aspect ratio	4:3 16:9

Audio Decoder

Standard	ISO/IEC13818-3 TS101154
Audio decoding	MPEG-1 and MPEG-2 Layer I & II, Dolby Digital Audio, HE-AAC Digital Audio
Sample rate	32 kHz, 22.1 kHz, 44.1KHz,48 kHz

Accessories

Remote control unit	IR (36kHz) RC3 / other on request (38kHz)NEC
User Manual	1 pc
A/V cable	1 pc
HDMI cable	1 pc
IR Receiver	1 pc
USB-C Cable	1 pc

Power

DC Input	5V/1.5A
Power consumption	< 8 W
Standby consumption	<0.8 W
Unit dimension	105x37x17mm
Unit Net Weight	about 47.7g