



JLAB
JBUDS OPEN
HEADPHONES

We love that you are rocking JLab!
We take pride in our products and fully stand behind them.



YOUR WARRANTY

All warranty claims are subject to JLab authorization and at our sole discretion. Retain your proof of purchase to ensure warranty coverage.



CONTACT US

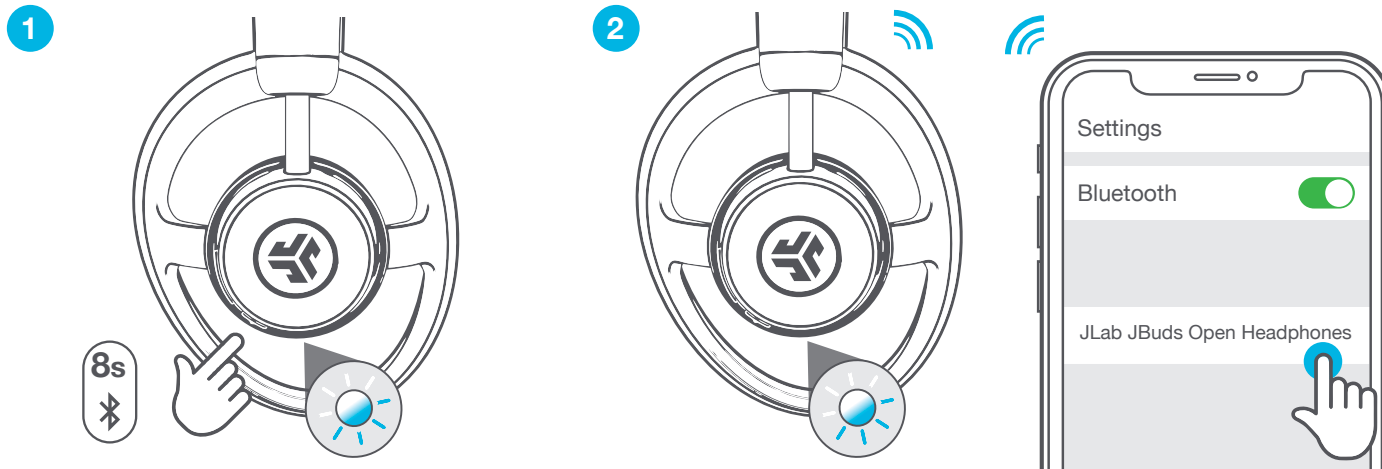
Reach out to us at support@jlab.com
or visit jlab.com/contact

REGISTER TODAY

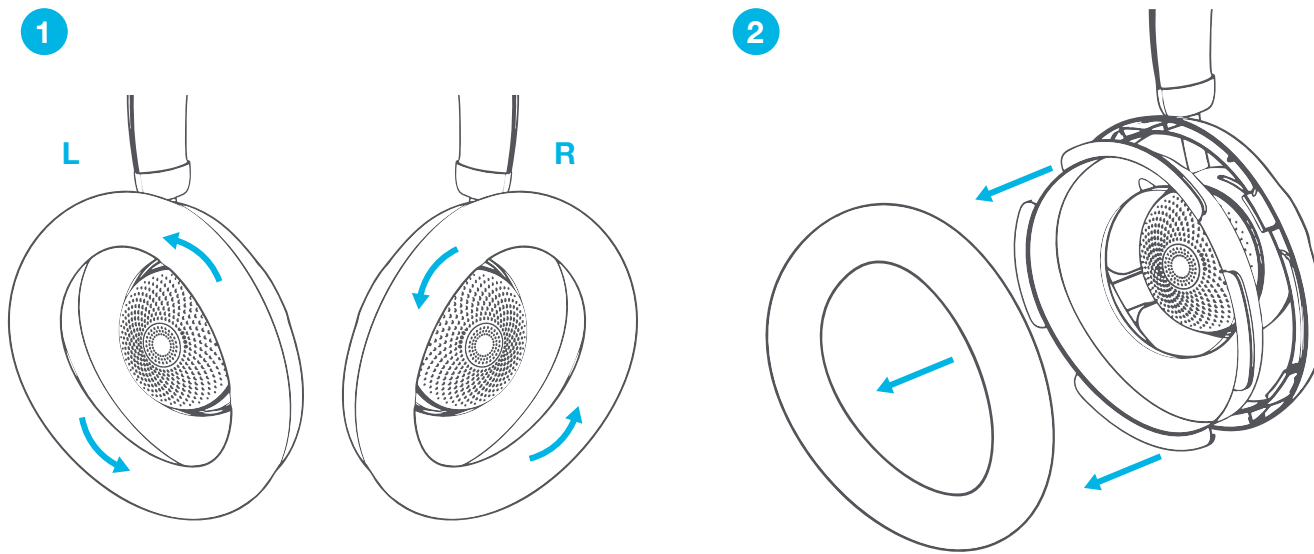
jlab.com/register

Product updates | How-to tips
FAQs & more

PAIR UP

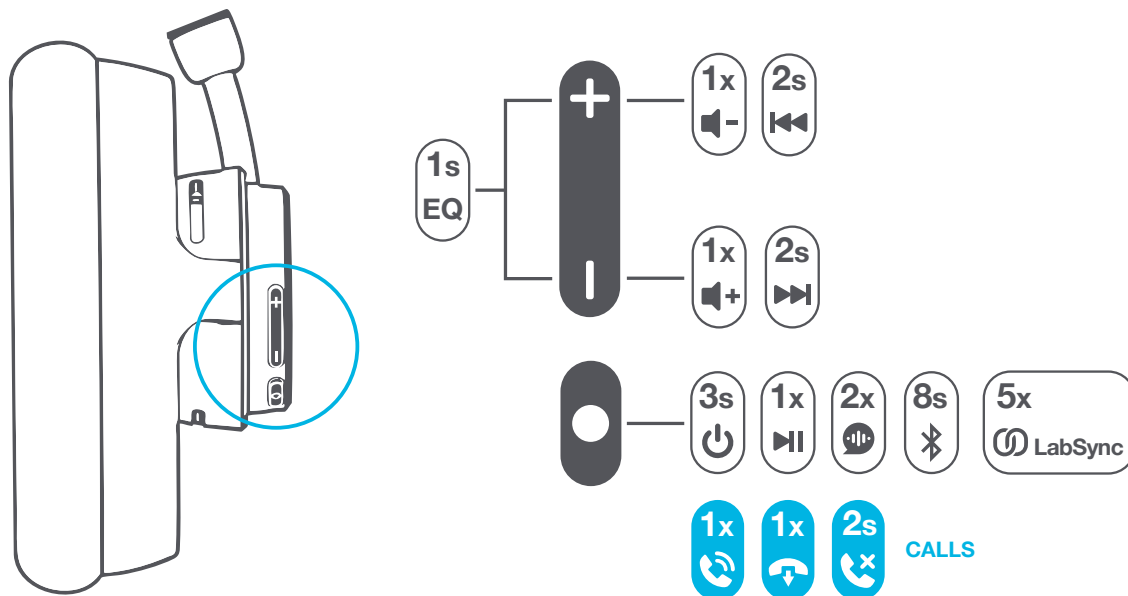


REMOVE COVERS



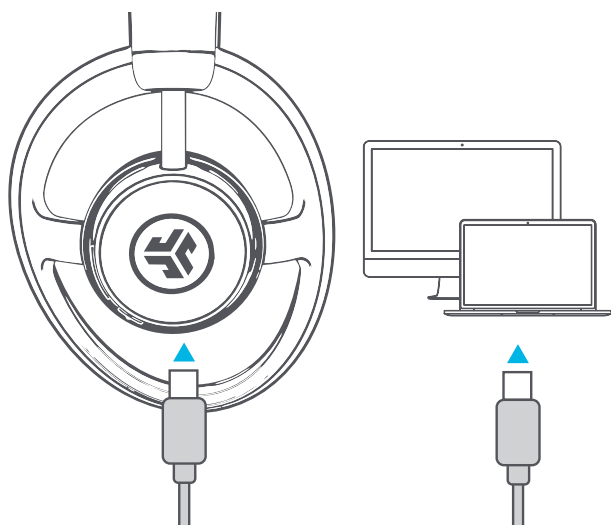
Rotate counter-clockwise

GO AHEAD, PRESS THE BUTTON

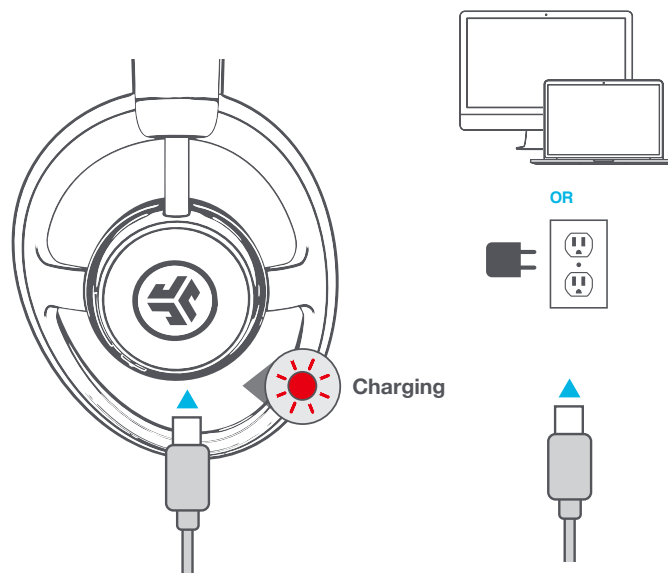


WIRED CONNECTION

Connect the JBuds Open cable to computer or mobile device.
Check your Input and Output audio settings.

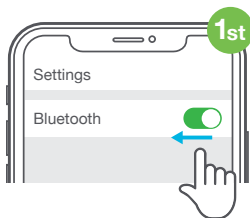


GET CHARGED

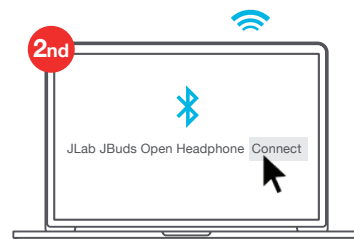


MULTIPOINT

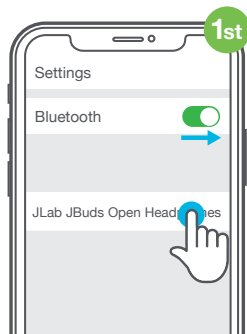
- 1** Once **1ST DEVICE** is connected, turn OFF Bluetooth



- 2** Connect to **2ND DEVICE**



- 3** Turn ON Bluetooth and reconnect **1ST DEVICE**



DOWNLOAD THE APP

Customize JBuds Open



[Shop products](#) | [Product alerts](#) | [Burn-in your headphones](#)

JLab Store + Burn-in Tool



[JLAB.COM](https://www.jlab.com)