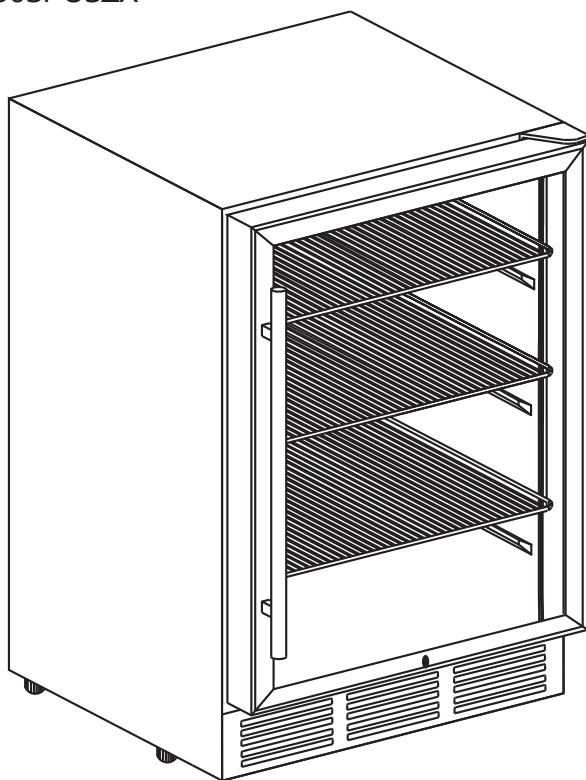


BRU-04 BEVERAGE REFRIGERATOR

User Manual

SKU: BR002-150SI-USZX



support@homyd.com



1-833-632-0897

THANK YOU FOR CHOOSING US

Thank you for choosing our product.

We sincerely appreciate your trust and support. Your satisfaction is our top priority, and we are committed to delivering high-quality products and attentive service.

If you have any questions or suggestions during use, please do not hesitate to contact us. We are always here to assist you.

Contact Information

Email: support@homyd.com (Replies within 24 hours on business days)

Toll-Free: 1-833-632-0897 (Monday to Friday, 9:00 AM – 6:00 PM ET)

We hope this product brings ease and enjoyment to your daily life.

Warranty Statement

This product is covered by a limited warranty that protects against defects in materials and workmanship under normal household use.

If your product develops a fault after the return period of your purchase platform has ended, please contact us directly. We will do our best to assist you based on the warranty terms.

For warranty-related inquiries, please reach out using the contact details listed above.

Contents

| | |
|--|----|
| Important Safety Instructions | 01 |
| Key Components And Structure | 04 |
| Installation Guide | 05 |
| Getting To Know Your Beverage Refrigerator | 09 |
| Cleaning And Maintenance | 10 |
| FAQs | 11 |
| Troubleshooting | 13 |
| Specs | 15 |
| Warranty Policy | 16 |
| Return Policy | 17 |

IMPORTANT SAFETY INSTRUCTIONS

To reduce the risk of fire, electric shock, or injury when using your appliance, follow these essential safety precautions:

General Precautions

1. Read all instructions before using the appliance.
2. This appliance can be used by persons with reduced physical, sensory, or mental capabilities or a lack of experience and knowledge if they have been given supervision or instruction concerning the use of the appliance in a safe way and understand the hazards involved.
3. This appliance is intended to be used in households and similar applications such as staff kitchen areas in shops, offices, and other working environments; hotels, motels, and other residential-type environments; bed and breakfast environments; and catering and similar non-retail applications.

Child & Pet Safety

4. An empty refrigerator can be hazardous to children or small pets. If disposing of the appliance, remove doors, latches, and seals to prevent entrapment.
5. Never allow children to play with, operate, or crawl inside the appliance.
6. This appliance and its packaging are not toys and should be kept away from children.
7. Children must be supervised when using the appliance.

Installation & Placement

8. The appliance is designed for free-standing or built-in (fully recessed) installation.
9. Ensure that ventilation openings in the appliance enclosure or built-in structure are clear of obstruction. Install the appliance in a well-ventilated area where the temperature is between **10°C (50°F)** and **32°C (90°F)**, and ensure it is protected from wind, rain, water spray, or drips.
10. Moving this appliance requires two people. Failure to do so may cause back or other injuries to the person handling the appliance.
11. Place your appliance on a hard, level floor that is strong enough to support it when fully loaded.
12. To level your appliance, adjust the leveling legs at the bottom of the appliance, if necessary.
13. **DO NOT** install the appliance near an oven or other heating source. Direct sunlight may affect the acrylic coating, and heat sources may increase electrical consumption. Extreme cold ambient temperatures may also prevent the appliance from performing properly.
14. Avoid locating the appliance in an area that may be exposed to excessive moisture.

Electrical Safety

15. Use a Properly Grounded Dedicated Outlet: This appliance requires a standard electrical outlet (**115/120 V AC Only, 60 Hz**) with a reliable three-prong grounding connection (rated **10A** or more). Have a qualified electrician check the wall outlet and circuit to ensure they are properly grounded.
16. Dedicated Circuit Required: Always plug the appliance into its own electrical outlet with a matching voltage rating (per the appliance label). **DO NOT** share the outlet with other electrical appliances. This ensures the best performance and prevents overloading house wiring circuits, which could create a fire hazard from overheating.
17. **DO NOT** use an extension cord with this appliance. However, if you must use an extension cord, it is absolutely necessary that it be a UL-Listed, 3-wire grounding type appliance extension cord having a grounding type plug and outlet and that the electrical rating of the cord is **120 volts** and at least **10 amperes**.
18. Use receptacles that cannot be turned off by a switch or pull chain.
19. **DO NOT** damage the power cord under any circumstances.
20. **DO NOT** twist or pinch the power cord of the appliance.
21. **DO NOT** plug or unplug power plugs with wet hands.
22. Never unplug the appliance by pulling the power cord. Always grip the plug firmly and pull straight out from the receptacle.
23. **DO NOT** connect portable extensions or power supplies to the rear of the appliance.
24. **DO NOT** under any circumstances cut or remove the third ground prong from the power cord supplied.
25. If the power cord is damaged, it must be replaced by the manufacturer, its service agent, or similarly qualified personnel to prevent any safety hazards.
26. Use a surge protector if the area is prone to outages. Damage from power surges is not covered by warranty.

Usage Guidelines

27. **DO NOT** store or use gasoline or any other flammable vapors and liquids in the vicinity of this or any other appliance. The fumes can create a fire or explosion.
28. **DO NOT** store explosive substances in this appliance, such as aerosol cans with a flammable propellant.
29. **DO NOT** leave the door open for extended periods, as this may cause a significant rise in internal temperature.
28. **DO NOT** store explosive substances in this appliance, such as aerosol cans with a flammable propellant.

- 29. **DO NOT** leave the door open for extended periods, as this may cause a significant rise in internal temperature.
- 30. This appliance is designed for storing and cooling wines. **DO NOT** store perishable food, medicine, or other medical products.
- 31. **DO NOT** use electrical appliances inside the drink storage compartments of the appliance unless they are of the type recommended by the manufacturer.
- 32. To prevent any hazards, all issues with the appliance must be resolved according to the instructions in this manual.

Maintenance and Cleaning

- 33. Before cleaning or performing maintenance, ensure the appliance is unplugged to prevent electric shock or death.
- 34. Never clean appliance parts with flammable fluids or harsh chemicals. The fumes can create a fire or explosion.
- 35. If the unit has not been used for more than **48 hours**, clean the drip tray located above the compressor.
- 36. If the appliance will remain unused for an extended time, switch it off, defrost, clean, dry thoroughly, and leave the door open to prevent mold growth.
- 37. **DO NOT** attempt to repair or replace any parts of the appliance unless explicitly instructed in this user manual. All other servicing must be carried out by qualified service personnel.



Risk of Fire or Explosion-Flammable Refrigerant Used

Dispose of the appliance following federal or local regulations.

Follow all handling instructions to ensure safe disposal.

DO NOT use mechanical devices to defrost the ice maker.

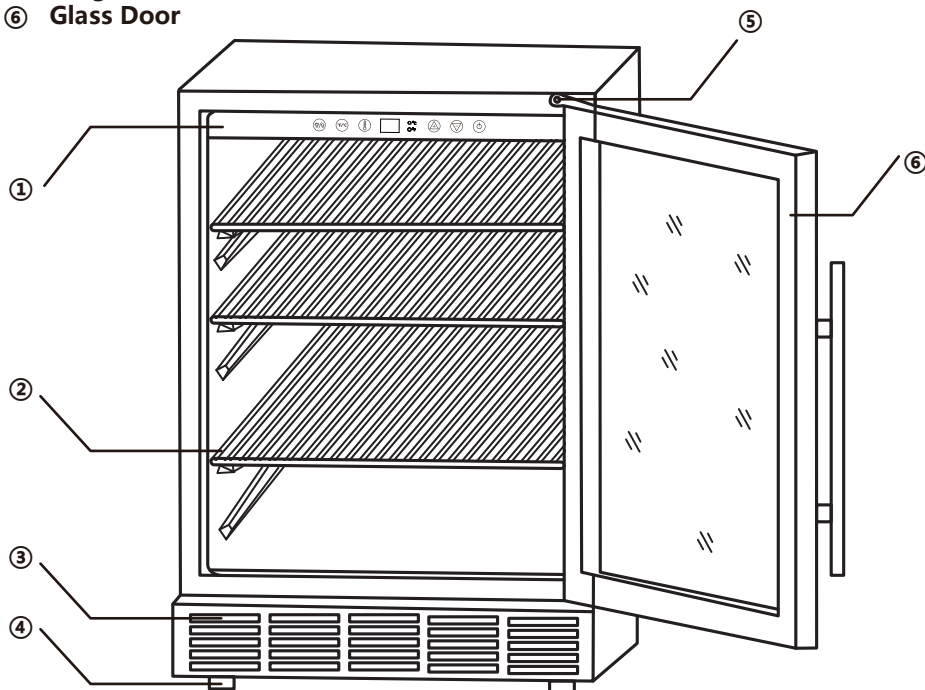
DO NOT puncture refrigerant tubing.

Servicing must be performed by trained personnel only.

Clean and maintain the appliance regularly according to this manual's Cleaning & Maintenance section.

KEY COMPONENTS AND STRUCTURE

- ① Control Panel
- ② Shelf
- ③ Air Outlet
- ④ Adjustable Leveling Legs
- ⑤ Hinge
- ⑥ Glass Door



Accessories

- | | |
|--|-----------------------------|
| 3 x Shelf | 2 x Key |
| 1 x Stainless Steel Handle | 4 x Adjustable Leveling Leg |
| 6 x Screw | 1 x Upper Hinge |
| 1 x User Manual | 1 x Lower Hinge |
| 6 x Black Plastic Plug (used to block the screw holes) | |

If any accessories are missing or lost, please feel free to contact our official customer service.

INSTALLATION GUIDE

Before Using Your Appliance

- 1.Remove the exterior and interior packaging.
- 2.To ensure proper operation of the appliance, it's important to keep it level. Adjust the leveling legs as needed to maintain stability.
- 3.Before connecting the appliance to the power source, let it stand upright for approximately **24 hours**. This will reduce the possibility of a malfunction in the cooling system from handling during transportation.
- 4.Clean the interior surface using lukewarm water and a soft cloth.

Position the Beverage Refrigerator

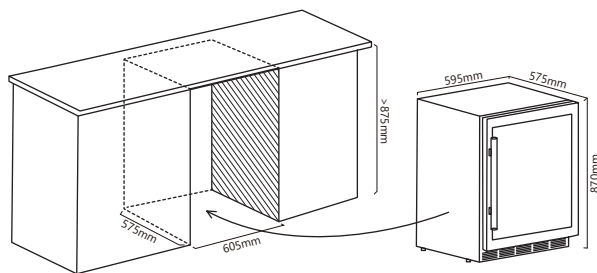
- 1.The beverage refrigerator should be placed in a dry, well-ventilated area with convenient access for daily use.
- 2.For optimal performance, the beverage refrigerator should be installed in an environment with temperatures maintained between **10°C (50°F)** and **32°C (90°F)** and humidity below 60%. Exposure to temperatures outside this recommended range may affect the cooler's performance. Extremely cold or hot environments can cause internal temperature fluctuations and potentially prevent the unit from achieving its designated cooling range of **3°C - 18°C (37°F - 65°F)**.
- 3.Be sure to install your beverage refrigerator on a floor strong enough to support it when it is fully loaded.

Moving the Appliance

- 1.Remove all beverages from the appliance.
- 2.Secure any loose parts inside the refrigerator, such as shelves, with tape.
- 3.Retract the adjustable leveling legs to avoid damage during transport.
- 4.Please securely tape the door closed and ensure the appliance remains upright during transportation. If horizontal transport is necessary, keep the door facing upward and wrap the exterior of the appliance with a blanket or similar protective material.

Built-in Installation

The appliance can be installed as either a built-in unit or a freestanding unit. For built-in installation, ensure sufficient access for maintenance and proper ventilation by leaving at least **5cm (2 inches)** of space on both sides and at the top.



Door Handle Installation

Note: The handle is designed to be installed on the left side of the door. However, since the door can be reversed, the handle can also be installed on the right side after the door is reversed.

1. As illustrated in Figure 1, remove the door gasket at the handle installation area until the two screws inside are visible. The gasket can be easily removed by hand without the need for tools.

2. Align the handle with the pre-installed screws on the door frame. Tighten the screws with a Phillips screwdriver until the handle is securely fastened to the door frame, as depicted in Figure 2.

3. Reinstall the gasket to its original position.

CAUTION: DO NOT overtighten the screws, as this may damage the handle assembly.

Figure 1

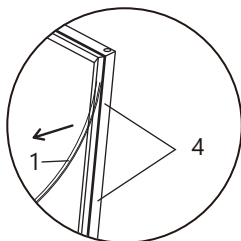
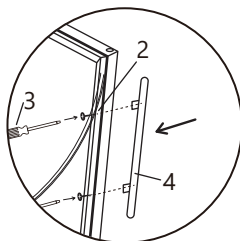


Figure 2



- 1 Sealing
- 2 Screws
- 3 Phillips screwdriver
- 4 Handle

Removing the Shelves

The appliance is equipped with three wired shelves. The shelves have rails designed with a stopper on each side of the shelf track to prevent bottles from falling.

1. Before removing a shelf from the appliance, ensure that all bottles on the shelf are removed and the door is fully opened.

2. To remove the shelves from the track, pull each shelf out to the shelf post.

3. Then, lift it slightly and slowly pull the shelf out.

CAUTION: To avoid damaging the door gasket, please fully open the door when removing the shelf.

Door Reversal Instructions

The door hinge of the beverage refrigerator is installed on the right side by default.

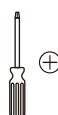
Precautions Before Reversing the Door

- 1.**DO NOT** plug the beverage refrigerator into the power outlet if you plan to reverse the door hinge.
- 2.**DO NOT** place the beverage refrigerator upside down during installation, as this may cause damage to the appliance.

Tools Required



Flat head screwdriver



Phillips screwdriver



Hex wrench

The steps to reverse the door are as follows:

Step 1: If the handle is already installed on the door, please remove the door gasket at the handle installation area. Detach the screws securing the handle and take off the handle. Afterward, reinstall the gasket to its original position.

Step 2: Gently remove the plastic plugs from the left side of the top of the beverage refrigerator with a flat head screwdriver. Kindly keep all parts for later use. (If the plastic plug breaks, you can still install the screws normally.)

Step 3: Use a hex wrench to remove the two screws connecting the door.

Step 4: Tilt the door slightly to remove the door from its hinges.

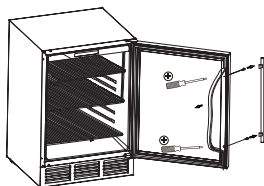
Step 5: Use a Phillips screwdriver to disassemble the hinge brackets from the machine. (Save the removed screws for the next step).

Step 6: Secure the hinge bracket to the door frame on the opposite side of the machine using the previously removed screws.

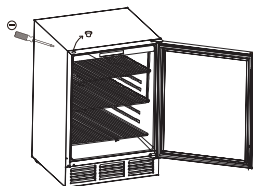
Step 7: Incline the door and insert it onto the hinge bracket above the machine. Tighten the screws with a hex wrench.

Step 8: Insert the plugs removed in Step 2 into the holes on the side from which the door was removed.

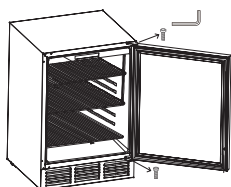
Step 1



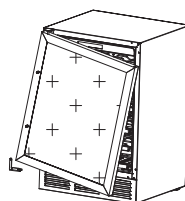
Step 2



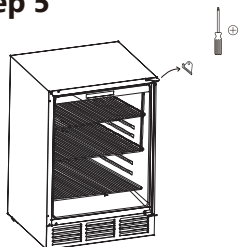
Step 3



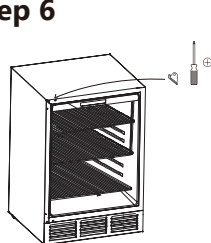
Step 4



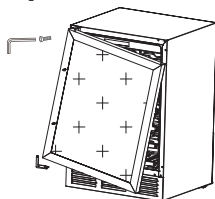
Step 5



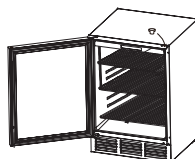
Step 6



Step 7



Step 8



IMPORTANT WARNING

Allow the refrigerant to settle: Wait at least **24 hours** before plugging in the appliance to allow the refrigerant to settle properly.

GETTING TO KNOW YOUR BEVERAGE REFRIGERATOR



Button



Press once to turn on the machine when it is off.
Press and hold for 3 seconds to turn off the machine.



and



Buttons

Use the  and  buttons to set the desired temperature between the range of 3°C - 18°C (37°F - 65°F). Long press is not effective.



Button

Press to begin adjusting the temperature.



Button

Press to toggle the temperature display between Celsius and Fahrenheit.



Button

Press once to turn the interior light **ON** or **OFF**.

Important Notes

1. After plugging the beverage refrigerator into a grounded outlet, the appliance will turn on automatically, and the LCD screen will display the internal temperature of the appliance.
2. For first-time use, after setting the desired temperature, allow the appliance to cool for **3 to 4 hours** before placing beverages inside the beverage refrigerator.
3. **Temperature Setting Range:** 3°C - 18°C (37°F - 65°F)
Recommended temperature settings
Beverage: 3°C - 10°C (37°F - 50°F)
Sparkling wines: 5°C - 8°C (41°F - 46°F)
Dry/white wines: 9°C - 14°C (48°F - 57°F)
Rose wines: 10°C - 11°C (50°F - 52°F)
Red wines: 15°C - 18°C (59°F - 64°F)
4. **Storage**
Cans and bottles vary in size and dimensions, so the actual storage capacity may differ. The stated capacity is based on standard Bordeaux 750ml bottles measuring 2.75" in diameter. For larger bottles, shelves can be removed to accommodate them, though this will reduce the total bottle capacity.



CLEANING AND MAINTENANCE

NOTE: When using this appliance outdoors, promptly clean any accumulated dust, moisture, or water stains to help maintain optimal performance and extend the product's service life.

Cleaning the machine

1. Unplug the beverage refrigerator and empty the beverages from the beverage refrigerator.
2. Create a cleansing mixture comprising 3-4 tablespoons of baking soda dissolved in warm water.
3. Moisten a sponge or gentle cloth with the solution and employ it to clean the beverage refrigerator.
4. Rinse using fresh, warm water and then pat dry with a soft cloth.
5. It is imperative to maintain the cleanliness and suppleness of the gaskets to guarantee an effective seal. Adhere to the general guidelines to cleanse the door gaskets every three months. A light application of petroleum jelly on the hinge side of the gaskets will preserve their suppleness and ensure a secure seal.
6. Reconnect the beverage refrigerator once the unit is clean and dry.

CAUTION:

It is recommended to clean the beverage refrigerator at least once a quarter to maintain good performance and hygiene.

DO NOT use harsh chemicals, abrasives, ammonia, chlorine bleach, concentrated detergents, solvents, metal scouring pads; some of these substances may erode, damage, and/or discolor your beverage refrigerator.

DO NOT hard brushes, wire brushes, abrasives, organic solvents, boiling water, acid or alkaline items as this may damage the surface and interior of the beverage refrigerator.

Maintenance Preparation Before Holidays and Relocation

1. Leave the beverage refrigerator operating during vacations of less than two days.
2. For extended holidays or when the beverage refrigerator is empty, unplug the power cord and clean both the interior and the door seal.
3. Keep the door open to ensure proper air circulation.

Energy Saving Tip: Place the appliance in the coolest area of the room, away from heat sources and direct sunlight.

FAQs

1. Is this beverage refrigerator suitable for outdoor use?

The beverage refrigerator can be used outdoors, but it should not be installed in areas where the temperature exceeds 32°C (90°F) or falls below 10°C (50°F), and the humidity should be below 60%. If the ambient temperature is outside this range, the cooler's performance may be affected. Additionally, please keep the appliance in a cool location away from direct sunlight. If you have any more questions or need further assistance, feel free to reach out. We're here to help!

2. Why can't the refrigerator maintain a stable temperature?

Due to external factors such as the compressor cycle switch, frequent door openings, high ambient temperatures, or overloading, slight temperature fluctuations are normal. Please ensure good airflow around stored items and avoid overloading to maintain optimal performance. Minor temperature changes help sustain cooling efficiency.

3. Is it possible to change the direction of the door?

The orientation of the beverage refrigerator door can be changed. Our manual contains detailed instructions.

4. Why is the cooling performance of this refrigerator not effective?

Environmental factors, such as ambient temperature, can affect cooling efficiency. Please place the refrigerator in a well-ventilated area, away from direct sunlight, and ensure it's connected to a stable power source. If the cooling performance still significantly differs from expectations, there might be an issue with the unit. Please contact our customer service team for assistance. We're here to help and ensure everything works perfectly for you!

5. Can the shelves inside the refrigerator be moved?

The shelves inside the refrigerator are adjustable and can be moved.

6. How many beverages can the refrigerator hold?

The number of beverages you can store in the refrigerator depends on their size. Typically, it can accommodate a variety of bottles and cans, but the exact number will vary. If you have specific sizes in mind, please feel free to contact our customer service team. We're here to help!

FAQs

7.Does it keep food securely cold?

Our beverage refrigerator can be set to a temperature range of 37°F-65°F (3°C-18°C), ideal for storing various beverages. It offers different temperature settings to keep drinks at their optimal temperature. It can also store some foods that don't require specific temperature settings. However, for items that need freezing, a freezer specifically designed for food storage is necessary.

8.What are the warranty specifications?

We provide a 12-month warranty and lifetime technical support for this refrigerator. If you would like to learn more, please contact our customer service team. Thank you very much.




9.Does this refrigerator need to be installed?

This beverage refrigerator only requires the installation of the handle. Once you receive it, simply let it sit for **24 hours** before plugging it in. This waiting period ensures optimal performance.


10.What is the return and exchange policy for this product?

Our return and exchange policy for this product is designed to ensure your happiness. If there are any quality issues or damage, we will take full responsibility and provide a return label for your convenience. However, if you wish to return the product due to reasons such as no longer needing it or an incorrect purchase, and there are no quality issues, the return shipping cost will need to be covered by you. For more detailed information or assistance, please don't hesitate to reach out to our customer service team. Thank you very much.

TROUBLESHOOTING

| Problem | Possible Cause | Solution |
|---|--|---|
| The beverage refrigerator does not run. | The beverage refrigerator may not be plugged in, or plug may be loose. | Ensure the beverage refrigerator has been plugged in properly. |
| | The beverage refrigerator is turned off. | Press  to turn on the beverage refrigerator. |
| | The house fuse has blown or circuit breaker has been tripped. | Check/replace fuse. Reset the circuit breaker. |
| The beverage refrigerator is not cold enough. | The external environment may require a higher setting. | Set a colder setting. Allow several hours for the temperature to stabilize. |
| | The beverage refrigerator has recently been disconnected for a period of time. | It takes 3-4 hours for the beverage refrigerator to cool down completely. |
| | Prolonged or frequent door openings. | Open the door less often. |
| | The door is not closed completely. | Close the door properly. |
| | The door gasket does not seal properly. | Check the door gasket. Clean or change the gasket if necessary. |
| The compressor turns on and off frequently. | The room temperature is hotter than normal. | It's normal for the beverage refrigerator to work harder under these conditions. |
| | A large number of items have been added to the beverage refrigerator. | A large amount of contents cause the beverage refrigerator to run more until the desired temperature is reached. |
| | Prolonged or frequent door openings. | Open the door less often. |
| | The temperature has not been set correctly. | Press either  or  to check the set temperature and to set the temperature properly. |
| | The door is not closed completely. | Close the door properly. |
| | The door gasket does not seal properly. | Check the door gasket. Clean or change gasket if necessary. |

TROUBLESHOOTING

| | | |
|---|--|--|
| The light does not work. | Not plugged in. | Plug the beverage refrigerator in. |
| | The circuit breaker tripped, or there's a blown fuse. | Check the breaker and/or fuses. |
| | The light button is "OFF". | Press  to turn the light ON. |
| Vibrations. | The beverage refrigerator is not leveled. | Check to ensure that the beverage refrigerator is level. |
| | The bottles are vibrating. | Make sure the bottles don't touch each other. |
| | There is an object under the beverage refrigerator. | Remove the object under the beverage refrigerator. |
| The beverage refrigerator seems to make too much noise. | The beverage refrigerator is not level. | Level the beverage refrigerator. |
| | Normal noise from the flow of the refrigerant. | The rattling noise may come from the flow of the refrigerant, which is normal. As each cycle ends, you may hear gurgling sounds caused by the flow of refrigerant in your beverage refrigerator. Contraction and expansion of the inside walls may cause popping and crackling noises. |
| | The machine may have been bumped during transportation, causing the leveling legs to fall behind the compressor. | Please check if there are any leveling legs near the compressor at the rear of the unit. If the legs are present, check whether they can be reinstalled. If not, feel free to contact our support team at support@homyd.com . |
| The product was damaged upon receipt. | It may have been caused by bumps during transportation. | Please kindly contact support@homyd.com . |
| The door will not close properly. | The beverage refrigerator is not level. | Level the beverage refrigerator. |
| | The door was reversed and not properly installed. | Reinstall the door properly. |
| | The gasket is dirty. | Clean the door gasket. |
| | The shelves are out of position. | Place the shelves properly. |

| | | |
|--|--|---|
| Moisture builds up on the interior or exterior of the beverage refrigerator. | This is normal during high-humidity periods. | Lower the room humidity. |
| | This is normal in high high-temperature environment. | Move the beverage refrigerator to a cooler place and avoid heat and sunlight. |
| | Prolonged or frequent door openings. | Open the door less often. |
| | The door does not seal completely. | Check door gaskets for proper seal. |
| The product arrived missing legs or other parts. | The machine comes with four legs, plus two extra legs as spares, placed together with the manual. The handle, screws, legs, and other accessories are located inside the refrigerator. Please check inside the refrigerator for these accessories. | If you still can't find them, feel free to contact our support team at support@homyd.com. They will respond within 24 hours on business days. |
| Error Code: <i>E1-E2-E3-E4-E7-E8</i> | A sensor has failed. | Contact customer service. |

SPECS

| | |
|--------------|-------------------|
| SKU | BR002-150SI-USZX |
| MODEL | BRU-04 |
| VOLTAGE | 115V~60HZ |
| REFRIGERANT | R600A,1.06Oz/30g |
| DIMENSIONS | 23.4*24.5*34.3 in |
| NET WEIGHT | 84.88lbs |
| GROSS WEIGHT | 105.82lbs |

WARRANTY POLICY

1-Year Limited Warranty

Toll-Free Call: 1-833-632-0897 Mon to Fri, 9AM - 6PM (ET)

Email: support@homyd.com

Thank you for choosing our products. We provide a 1-Year Limited Warranty for items purchased through our official channels. Please kindly note that this warranty is for the original purchaser and is non-transferable. If you purchase from an unauthorized seller, please get in touch with them directly.

We are committed to ensuring that our products are free from defects in materials and workmanship for one year from the date of purchase, as long as they are used under normal household conditions and maintained according to the User Manual. **Please note that certain conditions and exclusions apply:**

Should you find any defects in the original product or its non-wearable parts, we will be happy to repair or replace the item within one year of purchase. If a replacement is necessary, the warranty period will continue from the original purchase date. Please be aware that normal wear and tear or damage due to mishandling, accidents, or failure to follow instructions are not covered. However, replacement parts are available for purchase. Feel free to contact us for more information.

Please also note that this warranty does not cover damage caused by exposure to liquids or foreign materials, unauthorized repairs or modifications, or use in commercial or non-household environments (unless specified for commercial use).

If you encounter any issues with your product, we are here to help. You can reach us by phone at **1-833-632-0897** or email us at **support@homyd.com**. For certain product categories, we also offer the option to upgrade your warranty to our VIP service.

Our friendly phone support team is available from **Monday to Friday, 9 AM - 6 PM (ET)**. To assist you more efficiently, please have your product with you when you call. We aim to respond to emails within 24 business hours. If you don't receive a reply after sending us an email within this time frame, kindly check your spam folder to ensure you don't miss our response.

In addition to the one-year warranty, we also offer lifetime technical support. After the warranty period, service is still available at an additional cost. Please don't hesitate to contact us with any questions or concerns.

RETURN POLICY

We offer a 30-day return policy for purchases made directly through our company. This policy is separate from and does not override the return policies of third-party platforms.

Return Eligibility

Items must be returned within 30 days of purchase.

Products should be in new or like-new condition, with original packaging and all accessories (manuals, handles, keys, etc.).

Returns not related to quality issues will require the buyer to cover return shipping costs, which will be deducted from the final refund.

How to Initiate a Return

Contact our customer service team for return authorization.

Provide the following information:

Proof of purchase (e.g., screenshot with platform name, order number, date, item, and amount)

After approval, we will send a return shipping label. Attach it to the product box and return via the designated carrier.

Once we receive and inspect your return, we will process your refund within **2–3 business days** (excluding original processing or handling fees).

***Note:**

Returned products that are damaged or missing parts may not qualify for a refund.

This return policy does not affect your warranty rights.

For details, please refer to the “Return Policy” section of this manual or the return policy on your purchase platform.

SKU: BR002-150SI-USZX

