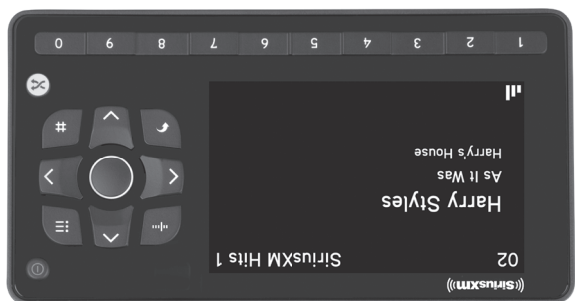


QUICK START GUIDE

SATELLITE RADIO WITH HOME KIT

ONYX EZR



Self installation instructions and tips are provided for your convenience. It is your responsibility to determine if you have the knowledge, skills and physical ability required to properly perform an installation. SiriusXM shall have no liability for damage or injury resulting from the installation or use of any SiriusXM or third party products. It is your responsibility to ensure that all products are installed in adherence with local laws and regulations and in such a manner as to allow a vehicle to be operated safely and without distraction. SiriusXM product warranties do not cover the installation, removal or reinstallation of any product.

Sirius XM Radio Inc.
1221 Avenue of the Americas, 36th Floor
New York, NY 10020

siriusxm.com

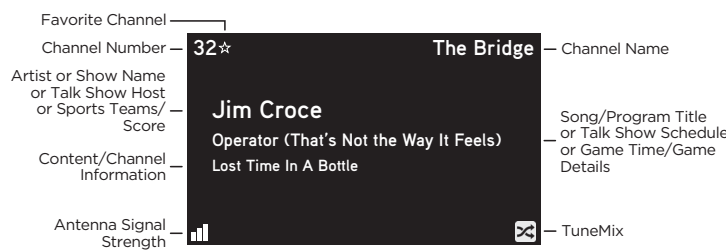
1.866.635.2349

© 2023 Sirius XM Radio Inc.

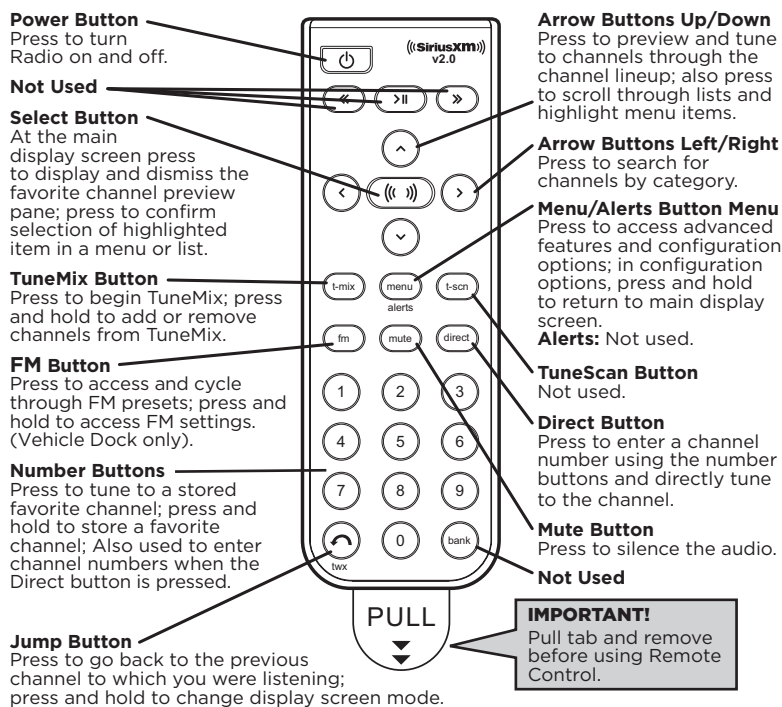
SXEZR1HIQSG 230301a

Onyx EZR Main Display

When listening to a channel, information about the channel and what is currently playing is displayed.



Remote Control Functions



Important Legal Information

Copyrights and Trademarks

© 2023 Sirius XM Radio Inc. Sirius, XM and all related marks and logos are trademarks of Sirius XM Radio Inc. Other marks, channel names and logos are the property of their respective owners. All rights reserved.

Important Legal Notice About Your Subscription

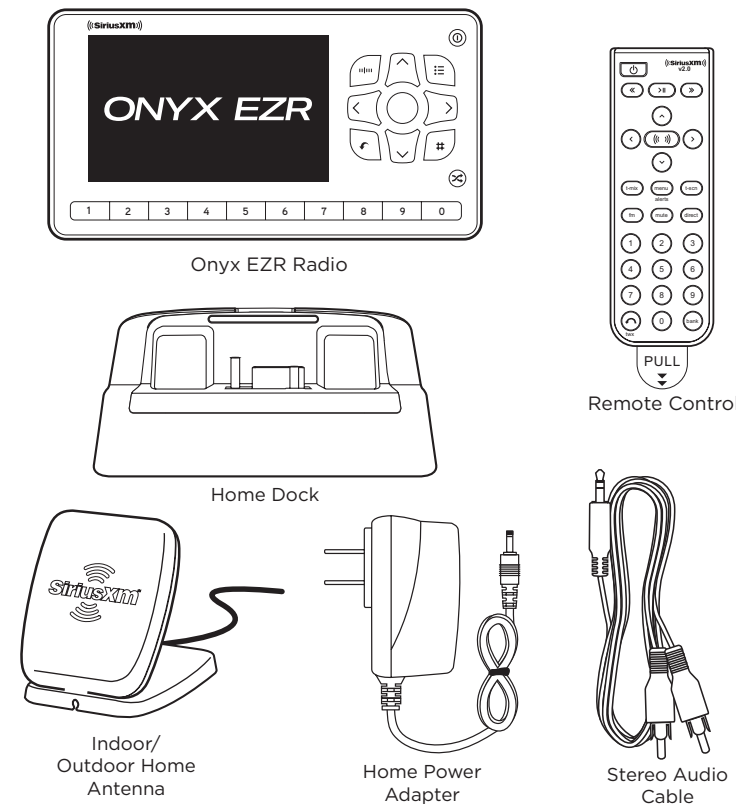
Hardware and subscription sold separately. **Service will automatically renew into the subscription Package you choose (which may differ from the Package which arrived with the Radio), and will automatically bill at then current rates, after any complimentary trial or promotional period ends, until you call us at 1-866-635-2349 to cancel.** See our Customer Agreement for complete terms at www.siriusxm.com. Fees and taxes apply. All fees and programming subject to change. Our satellite service is available only to those at least 18 and older in the 48 contiguous USA and DC. Our Sirius satellite service is also available in PR (with coverage limitations) **but this radio is not operational in PR.** Our streaming service is available throughout our satellite service area and in AK and HI.

FCC Statement

The user is cautioned that changes or modifications not expressly approved by Sirius XM Radio Inc. can void the user's authority to operate this device. This device complies with Part 15 of the FCC Rules. Operation is subject to the following two conditions: 1. This device may not cause harmful interference. 2. This device must accept any interference received, including interference that may cause undesired operation. This equipment has been tested and found to comply with the limits for a Class B digital device, pursuant to Part 15 of the FCC Rules. These limits are designed to provide reasonable protection against harmful interference in a residential installation. This equipment generates, uses, and can radiate radio frequency energy and, if not installed and used in accordance with the installation instructions, may cause harmful interference to radio communications. However, there is no guarantee that interference will not occur in a particular installation. If this equipment does cause harmful interference to radio or television reception, which can be determined by turning the equipment off and on, the user is encouraged to try to correct the interference by one or more of the following measures: •Reorient or relocate the receiving antenna of the affected receiver. •Increase the separation between the SiriusXM equipment and the affected receiver. •Connect the SiriusXM equipment into an outlet on a circuit different from that to which the affected receiver is connected. •Consult the dealer or an experienced radio/TV technician for help.

WARNING! The FCC and FAA have not certified this Satellite Radio Receiver for use in any aircraft (neither portable nor permanent installation). Therefore, Sirius XM Radio Inc. cannot support this type of application or installation.

What's in the Box?



If you experience problems with the operation or performance of your SiriusXM product, **DO NOT RETURN THIS PRODUCT TO YOUR RETAILER** Call SiriusXM Listener Care at 1-866-635-7191 and speak to one of our service representatives.

SiriusXM 90-Day Limited Warranty

What This Warranty Covers

This warranty covers defects in material and workmanship for 90 days from the date of purchase by the original retail purchaser only. Sirius XM Radio Inc., at its sole option, will repair or replace the product with a new or reconditioned product without charge for parts and labor. Products replaced under this warranty become the property of SiriusXM. Replacement products are warranted to be free from defects for 30 days or the remainder of the original warranty, whichever is longer.

What This Warranty Does Not Cover

This warranty does not cover: products sold as used, as is, reconditioned or refurbished; software stored on internal or removable memory; non-rechargeable batteries, surface preparation cleaners, adhesive pads, fasteners, and ear-buds; costs incurred for installation, removal or reinstallation of the product; correction of installation problems, such as elimination of externally generated static or noise and antenna placement and aiming; defects or damage caused by alteration, improper installation or removal, use of third party accessories, mishandling, misuse, neglect, accident, power surges or acts of nature.

How to Obtain Warranty Service

To obtain warranty service, please call SiriusXM Listener Care at 1-866-635-7191. You will be required to provide proof of purchase and a description of the defect. You must prepay the cost of shipping the product to an approved service center.

LIMITATIONS OF LIABILITY

THE LIABILITY OF SIRIUSXM UNDER THIS WARRANTY IS LIMITED TO REPAIR OR REPLACEMENT AS PROVIDED ABOVE AND IN NO EVENT SHALL THE LIABILITY EXCEED THE PURCHASE PRICE PAID FOR THE PRODUCT. ANY IMPLIED WARRANTIES, INCLUDING ANY IMPLIED WARRANTY OF MERCHANTABILITY OR FITNESS FOR A PARTICULAR PURPOSE, SHALL BE LIMITED TO THE DURATION OF THIS WRITTEN WARRANTY. ANY ACTION FOR BREACH OF WARRANTY, INCLUDING BREACH OF ANY IMPLIED WARRANTY OF MERCHANTABILITY, MUST BE BROUGHT WITHIN 48 MONTHS FROM THE DATE OF ORIGINAL PURCHASE. IN NO CASE SHALL SIRIUSXM BE LIABLE FOR ANY CONSEQUENTIAL OR INCIDENTAL DAMAGES FOR BREACH OF THIS OR ANY OTHER WARRANTY, EXPRESS OR IMPLIED. SOME STATES DO NOT ALLOW LIMITATIONS ON HOW LONG AN IMPLIED WARRANTY LASTS OR THE EXCLUSION OR LIMITATION OF INCIDENTAL OR CONSEQUENTIAL DAMAGES. SO THE ABOVE LIMITATIONS OR EXCLUSIONS MAY NOT APPLY TO YOU. This warranty gives you specific legal rights and you may also have other rights, which vary from state to state.

Safety and Care Information

IMPORTANT! Self installation instructions and tips are provided for your convenience. It is your responsibility to determine if you have the knowledge, skills, and physical ability required to properly perform an installation. SiriusXM shall have no liability for damage or injury resulting from the installation or use of any SiriusXM or third party products. SiriusXM product warranties do not cover the installation, removal or reinstallation of any product.

- Do not expose to extreme temperatures (above 140°F or below -4°F, or above 60°C or below -20°C).
- Do not expose to moisture. Do not use device near or in water. Do not touch the device with wet hands.
- Do not let any foreign matter spill into device.
- Do not store in dusty areas.
- Do not expose to chemicals such as benzene and thinners. Do not use liquid or aerosol cleaners. Clean with a soft damp cloth only.
- Do not expose to direct sunlight for a prolonged period of time, and do not expose to fire, flame, or other heat sources.
- Do not try to disassemble and/or repair device yourself.
- Do not drop your device or subject it to severe impact.
- Do not place heavy objects on device.
- Do not subject device to excessive pressure.
- If your device has an LCD screen which is damaged, do not touch the liquid crystal fluid.

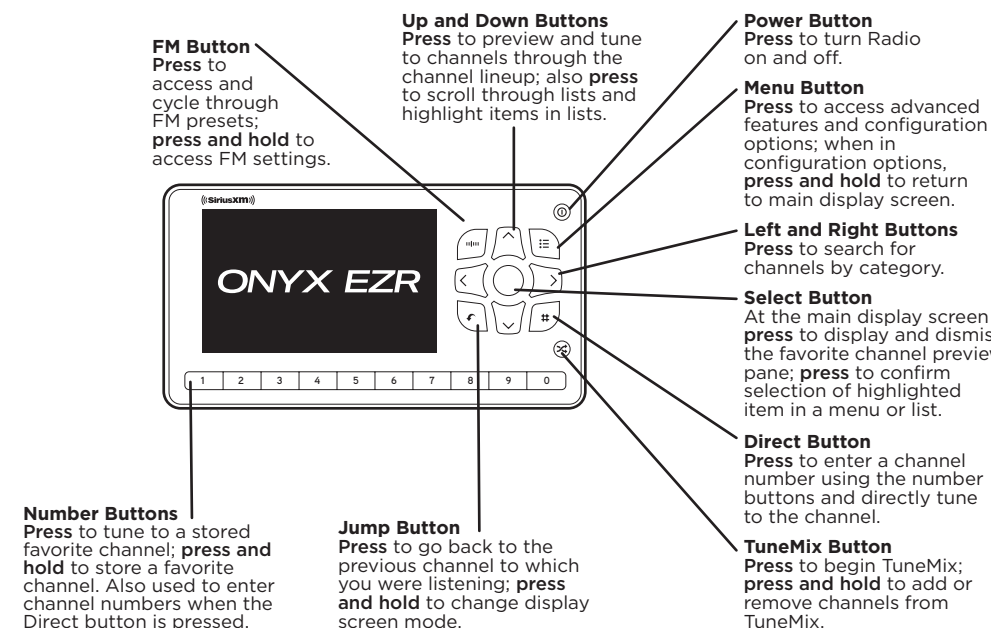
WARNING

- Opening the case may result in electric shock.
- If your product has an LCD screen, and the liquid crystal fluid comes in contact with your skin, wipe the skin area with a cloth and then wash the skin thoroughly with soap and running water. If the liquid crystal fluid comes into contact with your eyes, flush the eyes with clean water for at least 15 minutes and seek medical care. If the liquid crystal fluid is ingested, flush your mouth thoroughly with water. Drink large quantities of water, and induce vomiting. Seek medical care.
- Make sure that you insert the Home Power Adapter's plug all the way into the outlet.
- This product contains chemicals known to the State of California to cause cancer and birth defects or other reproductive harm.

Additional User Documents

Additional user documents are available at www.siriusxm.com/guides.

Onyx EZR Button Functions

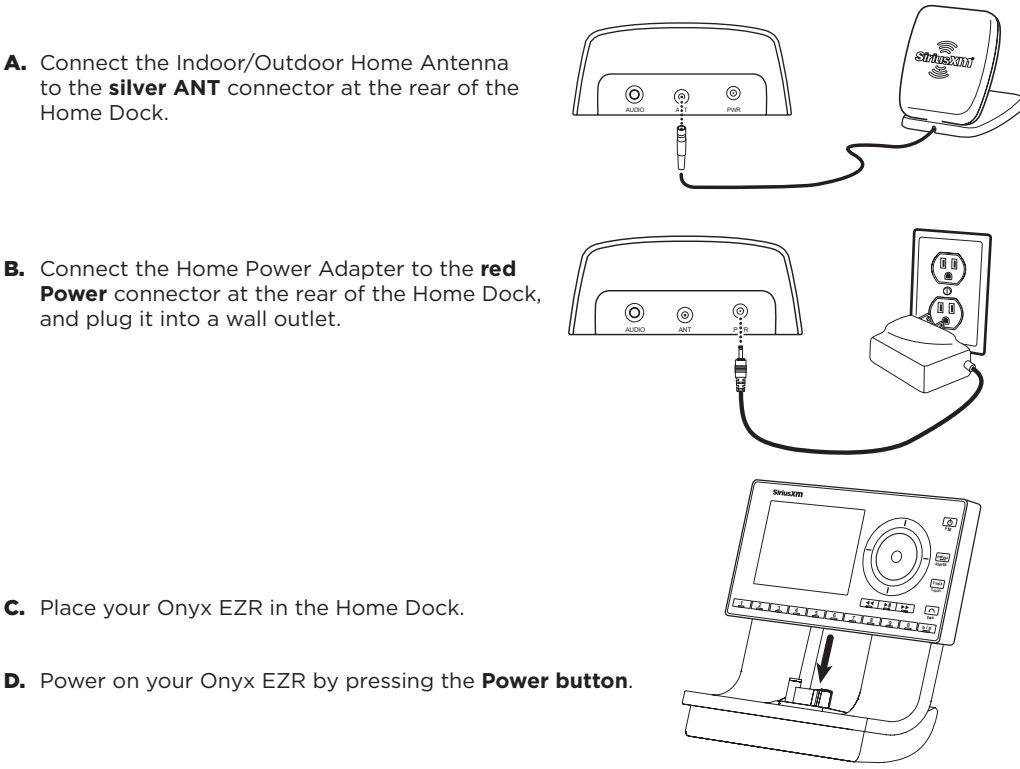


Specifications

System	Power Requirements:	110 V AC, 400 mA (max)
	Operating Temperature:	-4°F to +140°F (-20°C to +60°C)
	Audio Output:	1.5 Wrms (max)
Onyx EZR Radio	Dimensions:	5.0 in (W) x 2.7 in (H) x 0.72 in (D) 128 mm (W) x 68 mm (H) x 18.5 mm (D)
	Weight:	3.9 oz (111 g)
Home Dock	Dimensions:	4.1 in (W) x 1.8 in (H) x 1.7 in (D) 105 mm (W) x 45 mm (H) x 44 mm (D)
	Weight:	1.9 oz (54 g)
	Audio Connector:	1/8 in (3.5 mm) female
	Antenna Connector:	SMB male
Home Power Adapter	Input:	100-240 V AC, 50-60 Hz, 0.2 A
	Output:	5.0 V DC, 1.0 A
Indoor/Outdoor Home Antenna	Type:	SiriusXM Indoor/Outdoor
	Connector:	SMB female
	Cable Length:	Approximately 20 ft (6.1 m)
Stereo Audio Cable	Connectors:	1/8 in (3.5 mm) stereo male to RCA left & right
	Cable Length:	Approximately 5.9 ft (180 cm)
Remote Control	Dimensions:	1.6 in (W) x 4.7 in (H) x 0.63 in (D) 41 mm (W) x 120 mm (H) x 16 mm (D)
	Weight:	2.1 oz (60 g)
	Battery:	CR2032 (3V)

1 Connect the Home Dock and Dock the Radio

Select a location in close proximity to your stereo system or powered speakers, and also where the cable from the Indoor/Outdoor Home Antenna can reach the Home Dock. The location should be easily accessible and provide good visibility of the display, but should not be located where it will be in direct sunlight, which will reduce the visibility of the display screen.



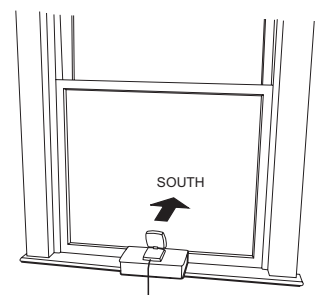
- A. Connect the Indoor/Outdoor Home Antenna to the **silver ANT** connector at the rear of the Home Dock.
- B. Connect the Home Power Adapter to the **red Power** connector at the rear of the Home Dock, and plug it into a wall outlet.
- C. Place your Onyx EZR in the Home Dock.
- D. Power on your Onyx EZR by pressing the **Power button**.

2 Place & Aim the Indoor/Outdoor Home Antenna

- A. Check the signal strength indicator on the Radio's screen. If there are 2 or 3 bars of signal strength, continue with step 3. If not, continue with step B below.
- B. Access the **Signal Indicator** screen by pressing **menu** and then pressing **▼** to scroll to and highlight **Signal Indicator**. Press the **Select button**.
- C. Try experimenting with the Indoor/Outdoor Home Antenna to get a feel for the reception in your location. If either the Satellite or the Terrestrial signal bar (or both) are more than half filled, you are receiving a good signal and are done aiming the antenna. Press and hold **menu** to exit the **Signal Indicator** screen. The radio should be tuned to channel 1, the XM Preview channel. Continue with step 3.
- D. If you are not yet receiving a good signal, move the antenna around the room or from room to room. Aim it at different windows, try moving the antenna closer to a window, ideally one that is facing due south.



Not sure which way is south? Think about where the sun rises (in the east) and sets (in the west). Then stand so that east is to your left and you'll be facing south. Is there a window in the direction you're facing? Place the antenna on the windowsill making sure it faces the glass and not the window frame. If you are receiving a good Satellite or Terrestrial signal (or both), you're done aiming the antenna. Press and hold **menu** to exit the **Signal Indicator** screen. The radio should be tuned to channel 1, the XM Preview channel. Continue with step 3.



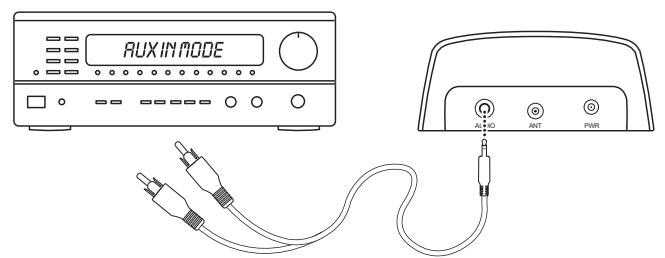
If you were unable to find an indoor location for the antenna, you will need to place it outdoors. Refer to "Step 2: Place and Aim the Indoor/Outdoor Home Antenna" in the User Guide for outdoor location options. Go to www.siriusxm.com/guides for the Onyx EZR User Guide (with Home Kit).

3 Connect the Audio

The Home Dock can be connected to your stereo system, or to a set of powered speakers.

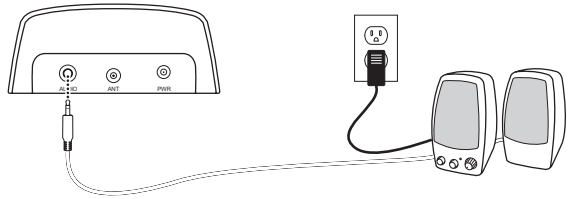
To Connect the Home Dock to Your Stereo System:

- A. Take the provided Stereo Audio Cable and connect the single connector to the **green AUDIO** connector at the rear of the Home Dock.
- B. Connect the white left and red right Stereo Audio Cable connectors to any available input other than PHONO on your stereo system. (If your stereo's inputs are marked red and black, connect the white plug to the black input.)
- C. Turn the stereo system On, and make sure you select the correct input on your stereo system for the AUX In or LINE In connection.
- D. If you have connected everything correctly, and you are receiving the XM signal, you should hear the SiriusXM audio from channel 1.
- E. The audio level of your Radio can also be adjusted, if necessary. Refer to "Set Audio Level" in the User Guide to adjust the audio level. Go to www.siriusxm.com/guides for the Onyx EZR User Guide (with Home Kit).



To Connect the Home Dock to Your Powered Speakers:

- A. Connect the powered speakers to the **green AUDIO** connector at the rear of the Home Dock.
- B. Plug the powered speakers into a wall outlet.
- C. Turn On the powered speakers.
- D. If you have connected everything correctly, and you are receiving the XM signal, you should hear the SiriusXM audio from channel 1.
- E. The audio level of your Radio can also be adjusted, if necessary. Refer to "Set Audio Level" in the User Guide to adjust the audio level. Go to www.siriusxm.com/guides for the Onyx EZR User Guide (with Home Kit).



4 Subscribe

You can either follow the general activation and subscription process or use the on-board activation guide to activate your Onyx EZR and subscribe to the SiriusXM service.

General activation and subscription process:

- A. Make sure your Onyx EZR is turned on, receiving the XM signal, and tuned to XM Preview channel 1 so that you can hear SiriusXM audio.
- B. Make a note of your SiriusXM Radio ID. You can find it by selecting **Radio ID** in menu items, by tuning to channel 0, on a label on the bottom of the gift box, and on the label on the back of your Onyx EZR.
- C. To subscribe:
 - Online: Go to www.siriusxm.com/activatenow to access or set up an online account, subscribe to the service, and activate your Radio.
 - OR
 - By phone: Call **1-866-587-4225**.



NOTE! The SiriusXM Radio ID does not use the letters I, O, S, or F.



*The phone number shown above may differ from the one shown on your Onyx EZR. All numbers are valid.

Radio remain on until subscribed. Once subscribed, the Radio will receive and you can tune to channels in your subscription plan.

Press **▲** or **▼** to tune to other channels, and **◀** or **▶** to browse the different categories of channels. Learn what all the buttons do on the opposite side of this Quick Start Guide.

Activation guide:

For your convenience, Onyx EZR has an on-board activation guide. You can activate your radio and subscribe to the SiriusXM service by using this guide, where you will be guided step-by-step through the subscription process. To access and use the guide, simply follow these steps:

- A. Turn Onyx EZR on and press the **menu button**.
- B. **Activate Radio** will be highlighted. Press the **Select button**.
- C. Follow the directions on each successive screen until you complete the subscription process.

