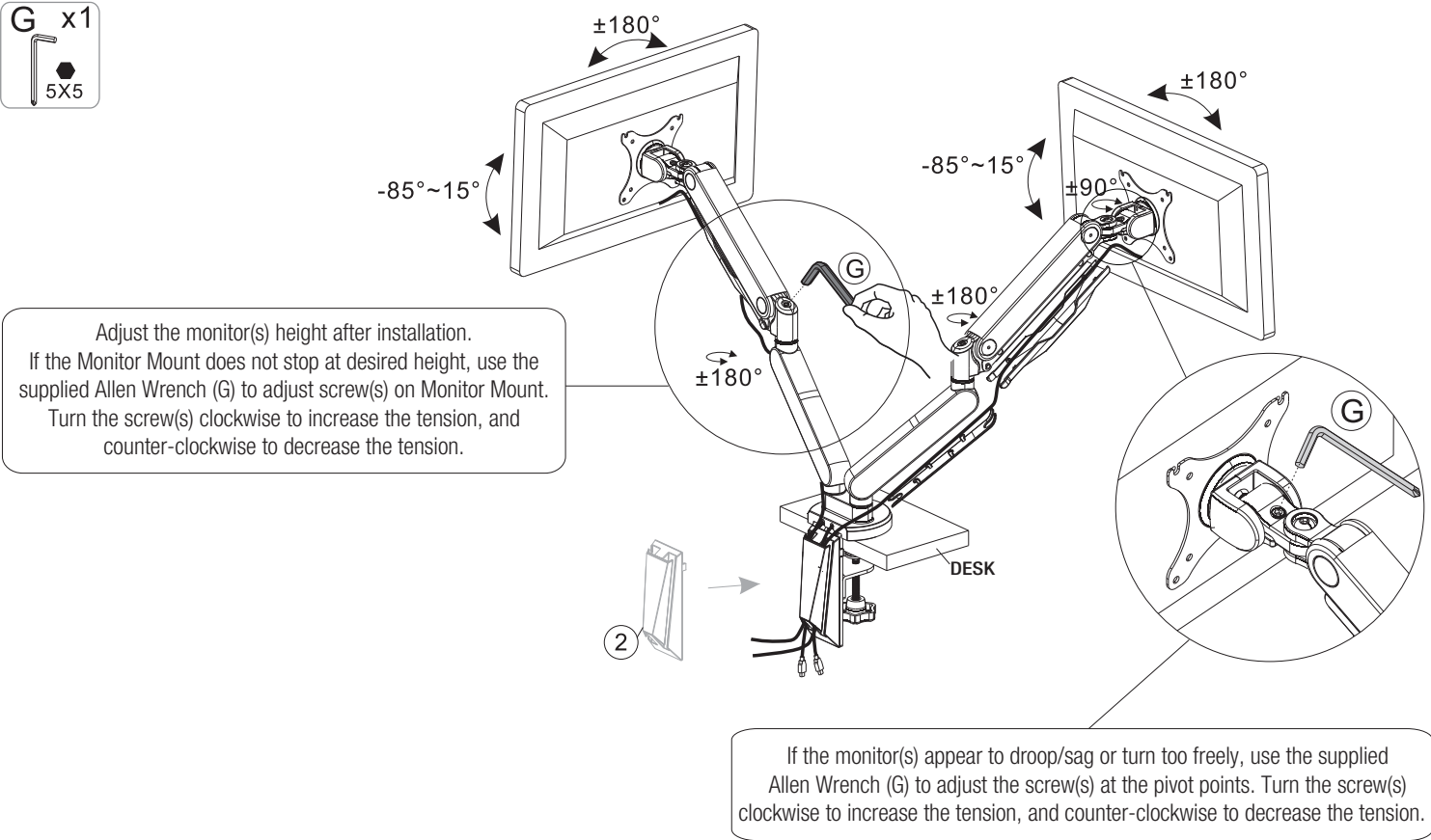
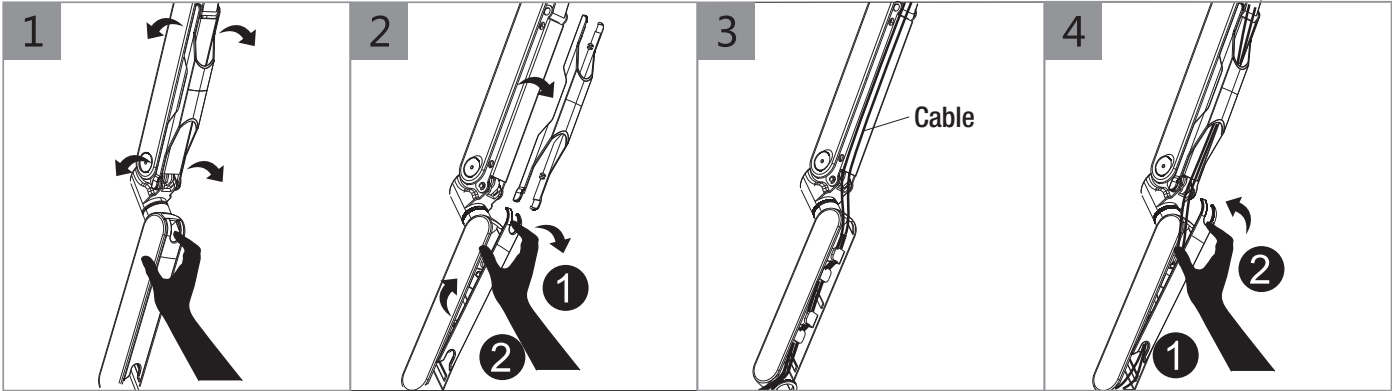


A2MAD1730  
DOUBLE MONITOR ARM WITH DUAL USB 3.0 PORTS  
OPERATING NSTRUCTIONS

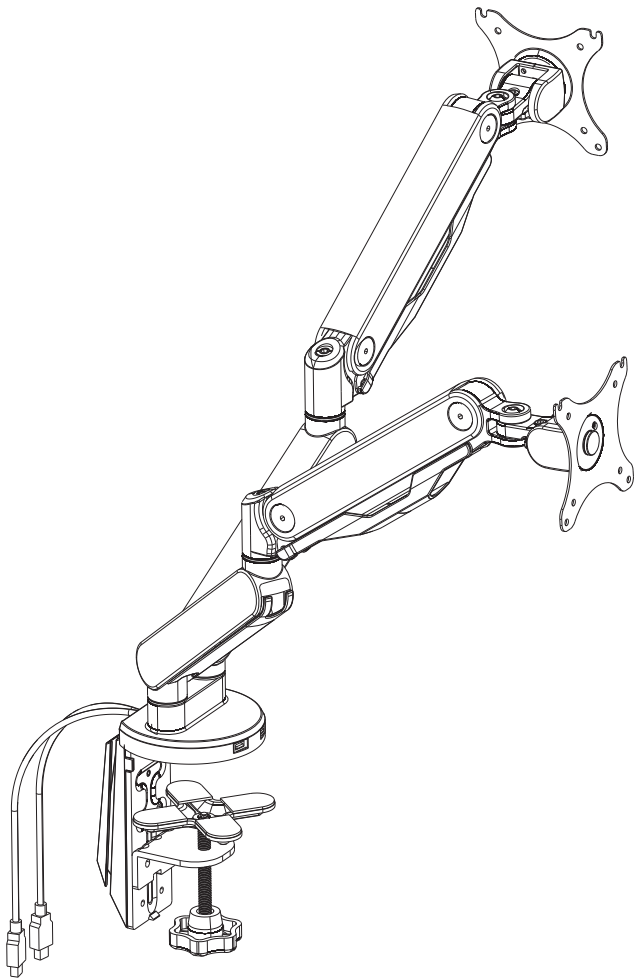
STEP 4 MOUNT ADJUSTMENT



STEP 5 CABLE MANAGEMENT



A2MAD1730  
DOUBLE MONITOR ARM WITH DUAL USB 3.0 PORTS  
OPERATING INSTRUCTIONS



- WARNING**
1. Do not use this product unless all bolts, screws and knobs are securely tightened.
  2. Check that all bolts, screws and knobs are tight every three months or as needed.
  3. Dispose of packing material properly. Do not use plastic cover as head covering. It may cause suffocation.
  4. Use this product for its intended purpose only.
  5. Use mild detergent only for cleaning.

- LIMITED WARRANTY**
- A2MAD1730 is warranted from the original purchase date to the original purchaser for normal commercial usage - defined as a standard forty-hour work week according to the below-listed schedule and limitations.
- 3 year warranty
  - Warranted against failure due to materials and workmanship

**Warranty Exclusions**

This warranty will not cover labor, freight, or damage from misuse, abuse, negligence, alteration, assembly, installation, attachments, accident, vandalism, acts of nature or any other event beyond our control. The warranty does not cover cosmetic damage that may result from normal use. Liability for incidental or consequential damage is excluded. The user assumes all risk of injury resulting from use of this product.

This warranty applies only to products purchased through authorized dealers and products sold within the United States of America and the Commonwealth of Canada. This warranty does not apply to products used for rental purposes. This warranty gives you specific legal rights, and you may also have other rights which vary from state to state.

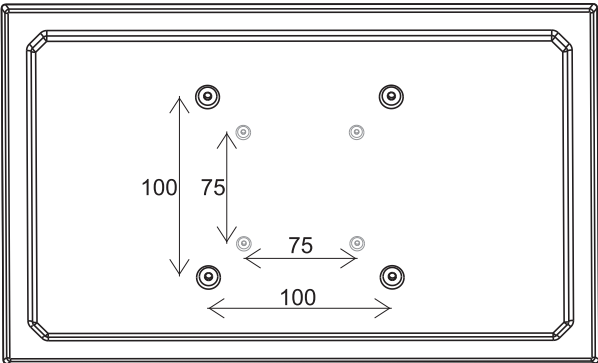
A2MAD1730

DOUBLE MONITOR ARM WITH DUAL USB 3.0 PORTS

ASSEMBLY INSTRUCTIONS

Remove all the parts from carton, separate them into part numbers indicated on the list and make sure part quantities are correct.

**STEP 1** Ensure that there are VESA holes 100 x 100mm or 75 x 75mm in the monitor(s) that is being mounted. If not, the monitor cannot be mounted. Carefully remove the original fixed base on the monitor(s).

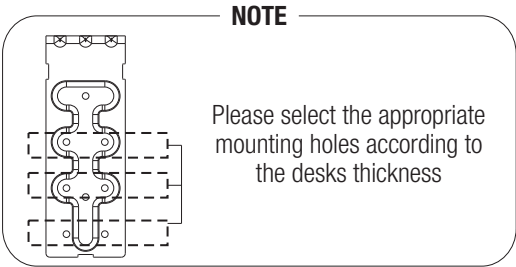
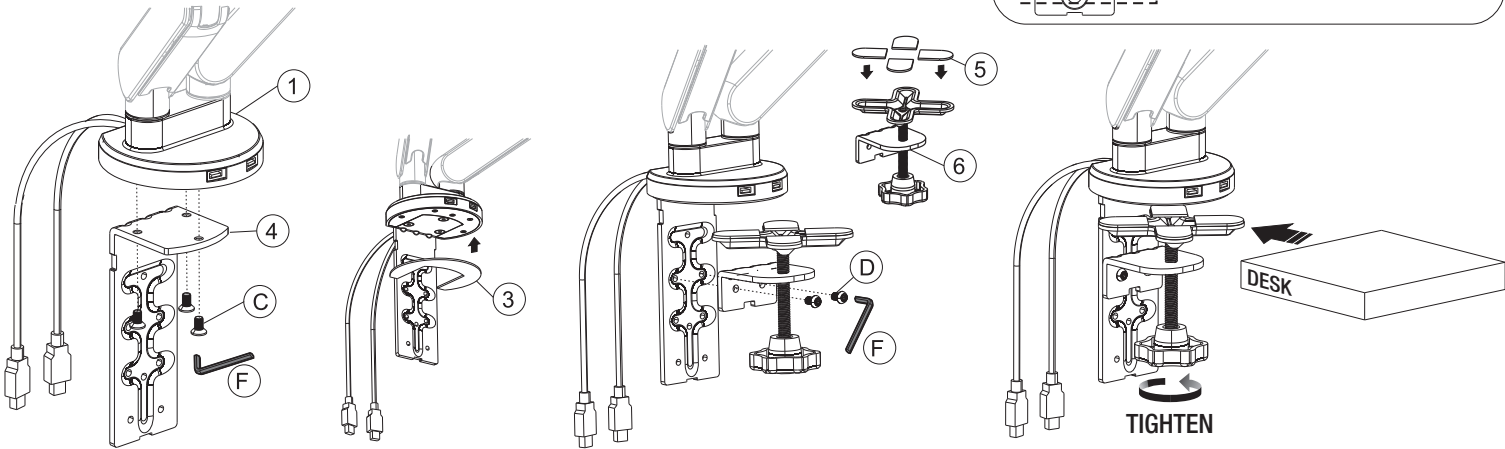
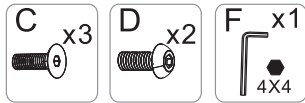


PART	QTY
1. Monitor Mount	1
2. Cable Cover	1
3. Anti-Slip Rubber 1	1
4. Support Bracket	1
5. Anti-Slip Rubber 2	4
6. Threaded Clamp	1
7. Bottom Support	1
8. Threaded Stud	1
9. Anti-Slip Rubber 3	1
10. Pressure Plate	1
11. Wing Nut	1

HARDWARE	QTY
A. Phillips Bolt (M4 x 12)	8
B. Phillips Bolt (M5 x 12)	8
C. Allen Bolt (M6 x 12)	3
D. Allen Bolt (M6 x 14)	2
E. Washer	16
F. Allen Wrench (4 x 4)	1
G. Allen Wrench (5 x 5)	1

Phillips screwdriver also needed for assembly  
(not provided)

STEP 2-A OPTION 1: CLAMP

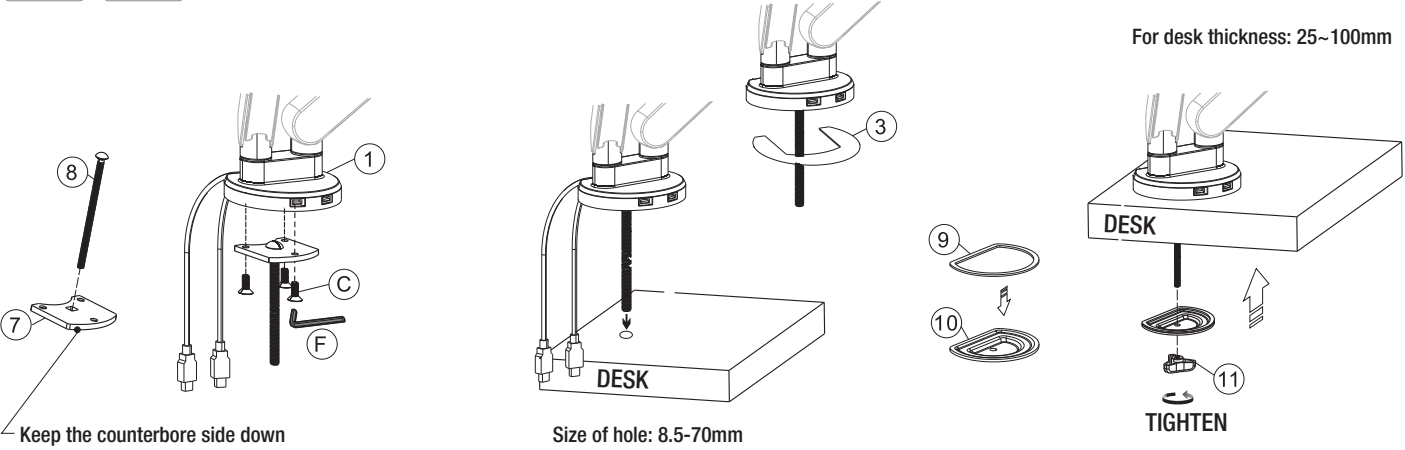
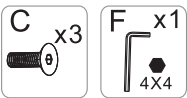


A2MAD1730

DOUBLE MONITOR ARM WITH DUAL USB 3.0 PORTS

ASSEMBLY INSTRUCTIONS

STEP 2B OPTION 2: GROMMET



STEP 3 ATTACHING MONITOR TO PLATE

