

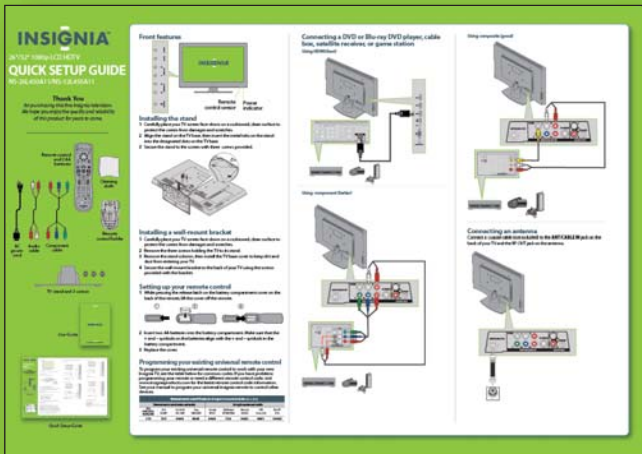
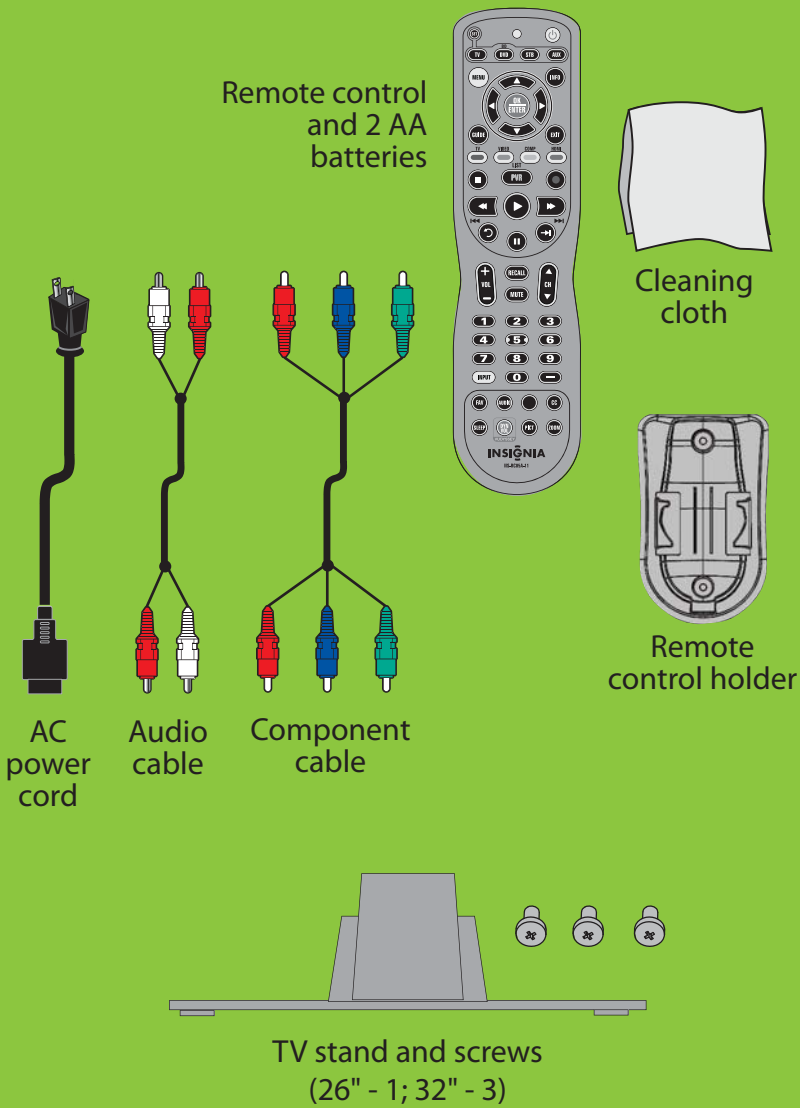


26"/32" 1080p LCD HDTV

QUICK SETUP GUIDE

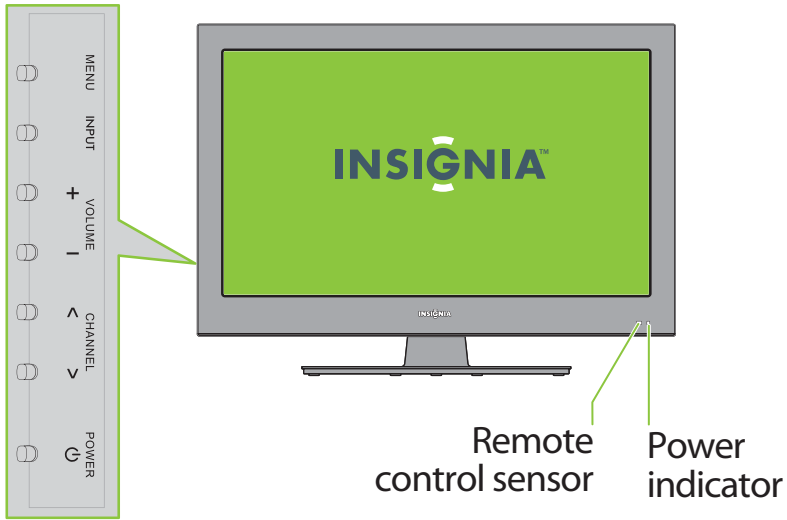
NS-26L450A11/NS-32L450A11

Thank You
for purchasing this fine Insignia television.
We hope you enjoy the quality and reliability
of this product for years to come.



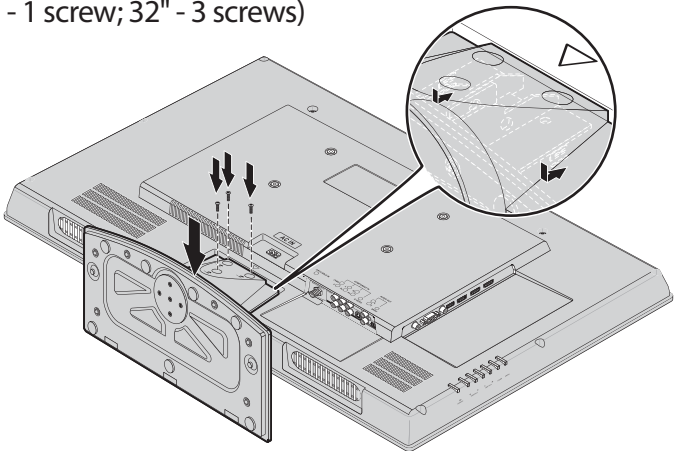
Quick Setup Guide

Front features



Installing the stand

- 1 Carefully place your TV screen face-down on a cushioned, clean surface to protect the screen from damages and scratches.
- 2 Align the stand on the TV base, then insert the metal tabs on the stand into the designated slots on the TV base
- 3 Secure the stand to the screen with three screws provided. (26" - 1 screw; 32" - 3 screws)



Installing a wall-mount bracket

- 1 Carefully place your TV screen face-down on a cushioned, clean surface to protect the screen from damages and scratches.
- 2 Remove the three screws holding the TV to its stand.
- 3 Remove the stand column, then install the TV base cover to keep dirt and dust from entering your TV.
- 4 Secure the wall-mount bracket to the back of your TV using the screws provided with the bracket.

Setting up your remote control

- 1 While pressing the release latch on the battery compartment cover on the back of the remote, lift the cover off the remote.



- 2 Insert two AA batteries into the battery compartment. Make sure that the + and - symbols on the batteries align with the + and - symbols in the battery compartment.
- 3 Replace the cover.

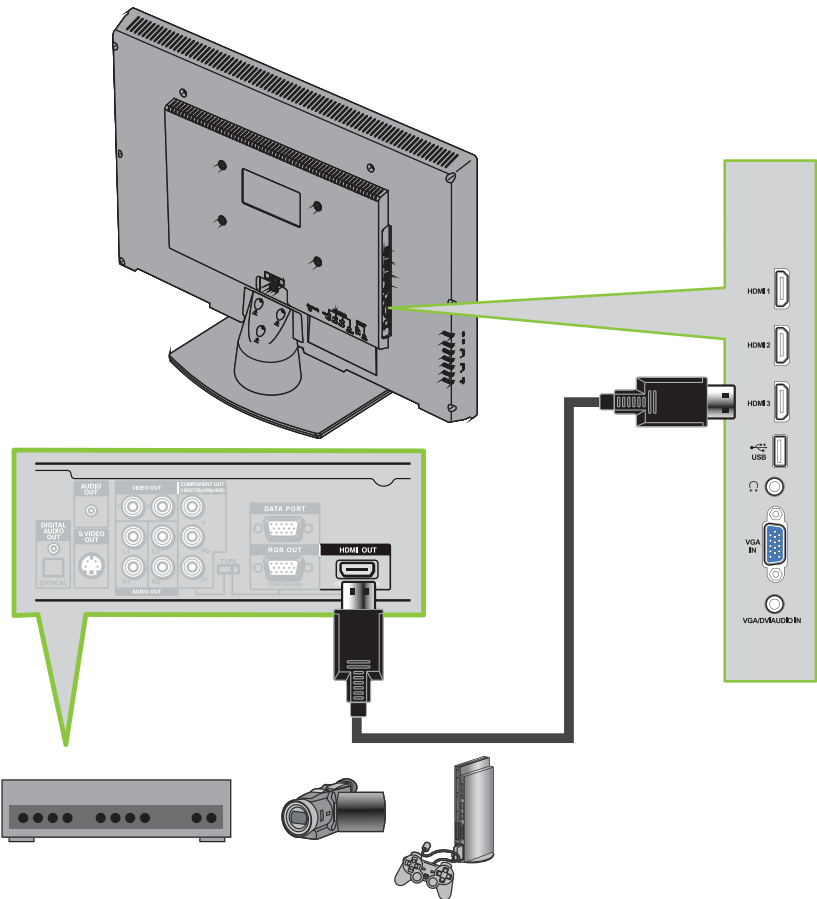
Programming your existing universal remote control

To program your existing universal remote control to work with your new Insignia TV, see the table below for common codes. If you have problems programming your remote or need a different remote control code, visit www.insigniaproducts.com for the latest remote control code information. See your manual to program your universal insignia remote to control other devices.

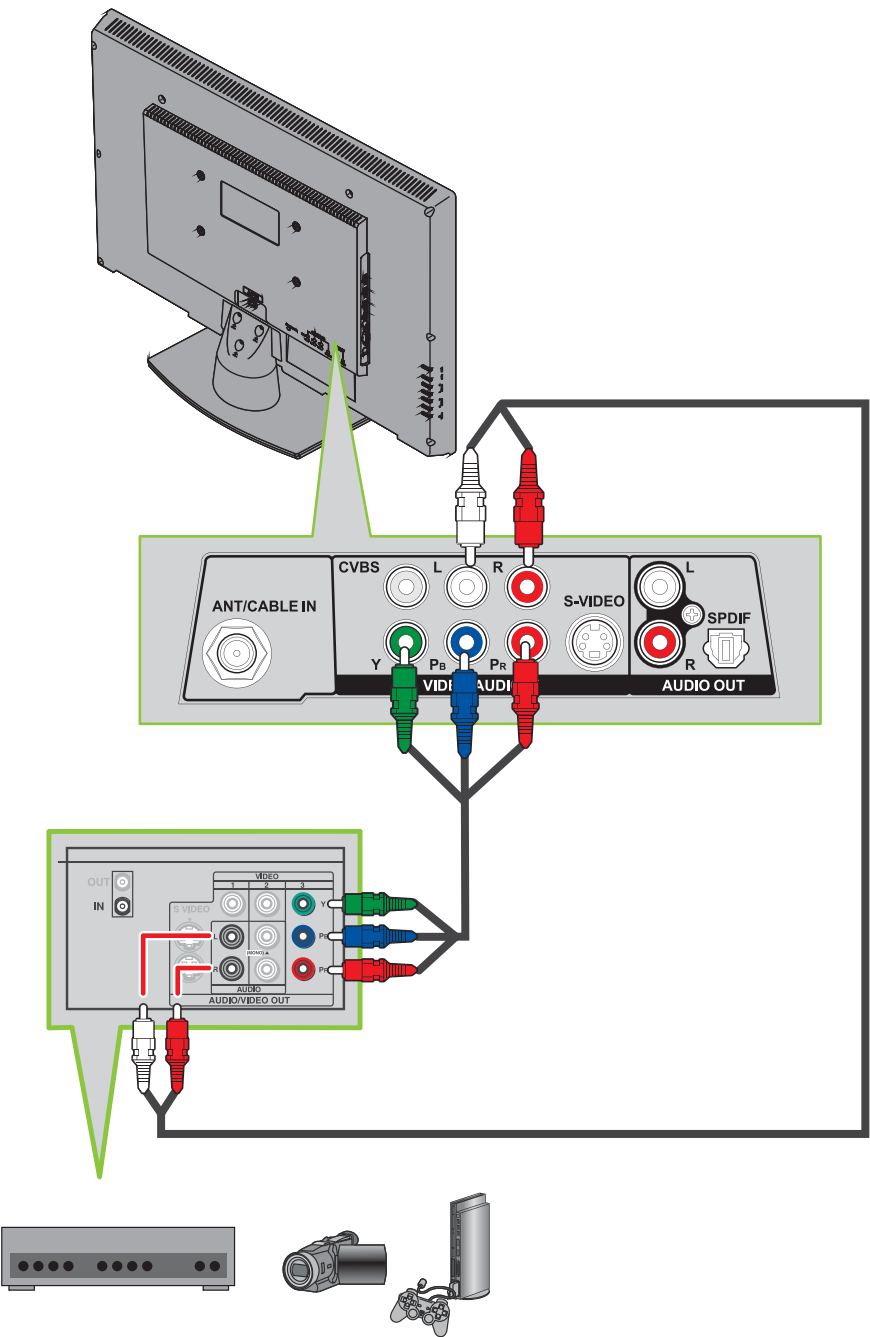
| Universal remote control TV codes (for all Insignia TVs manufactured after Jan. 1, 2007) | | | | | | | | |
|--|---------------|-------------------------|------------------|-------------------------------|--------------------------------|--------------------|----------------------|------------------|
| Universal remote control makers and models | | | | Set-top box makers and models | | | | |
| Philips PHVD05, PHSD5, PMDVR8, PDVR8 | RCA RCU807 | One for All URC-6690 | Sony RM-VL600 | Comcast M1057 | Dish Network VIP508, VIP622 | Motorola DRC800 | TIVO Series 3, HD | DirectTV RC23 |
| 115 | 135 | 0464 | 8043 | 0463 | 720 | 0463 | 0091 | 10463 |

Connecting a DVD or Blu-ray DVD player, cable box, satellite receiver, or game station

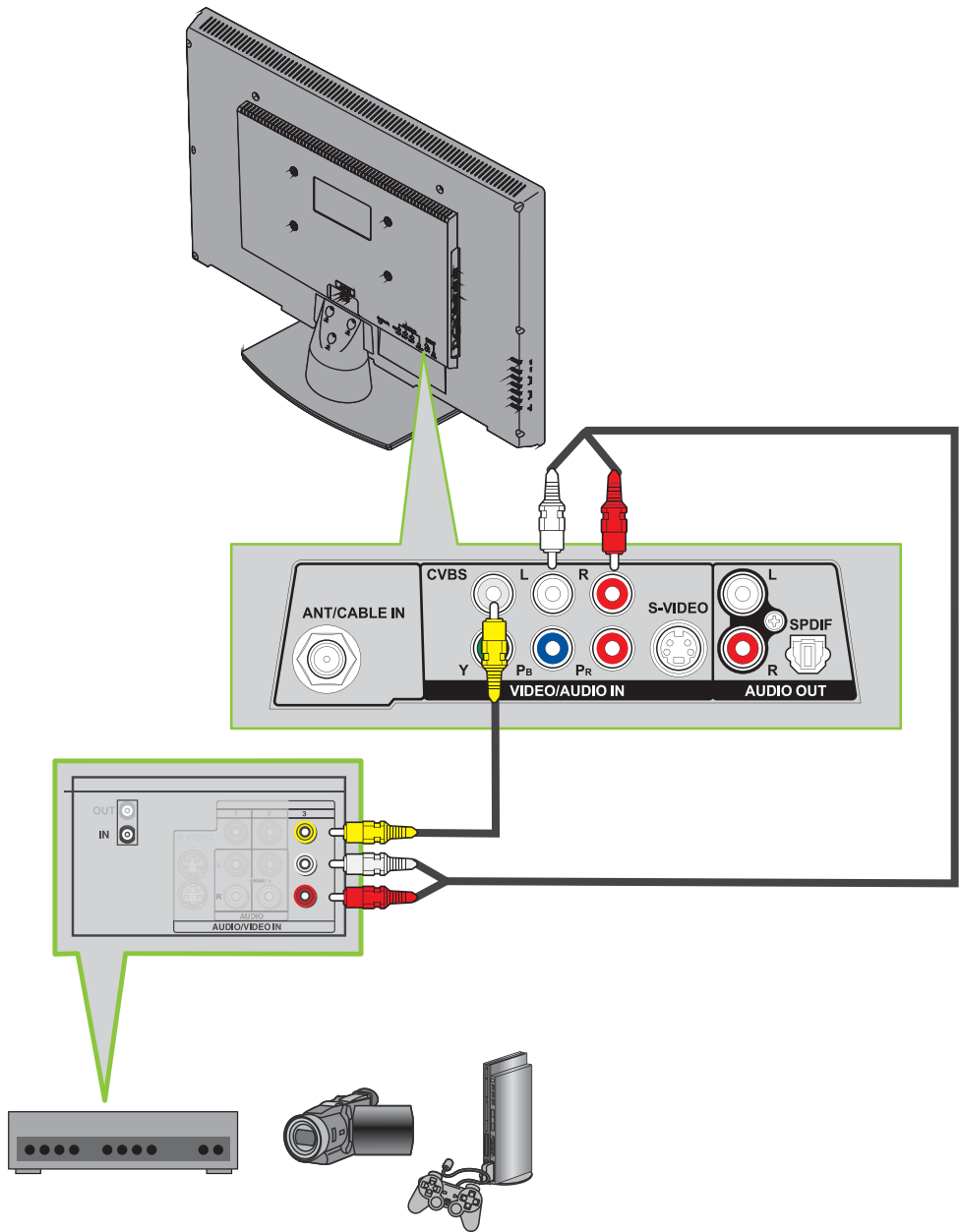
Using HDMI (best)



Using component (better)

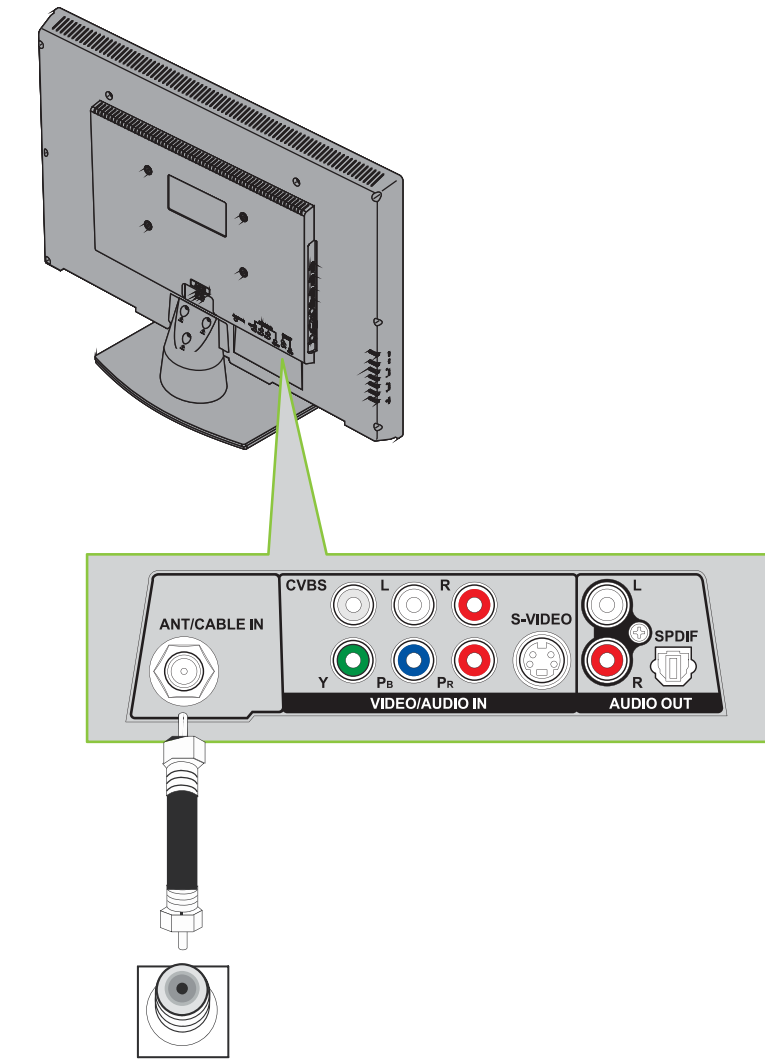


Using composite (good)



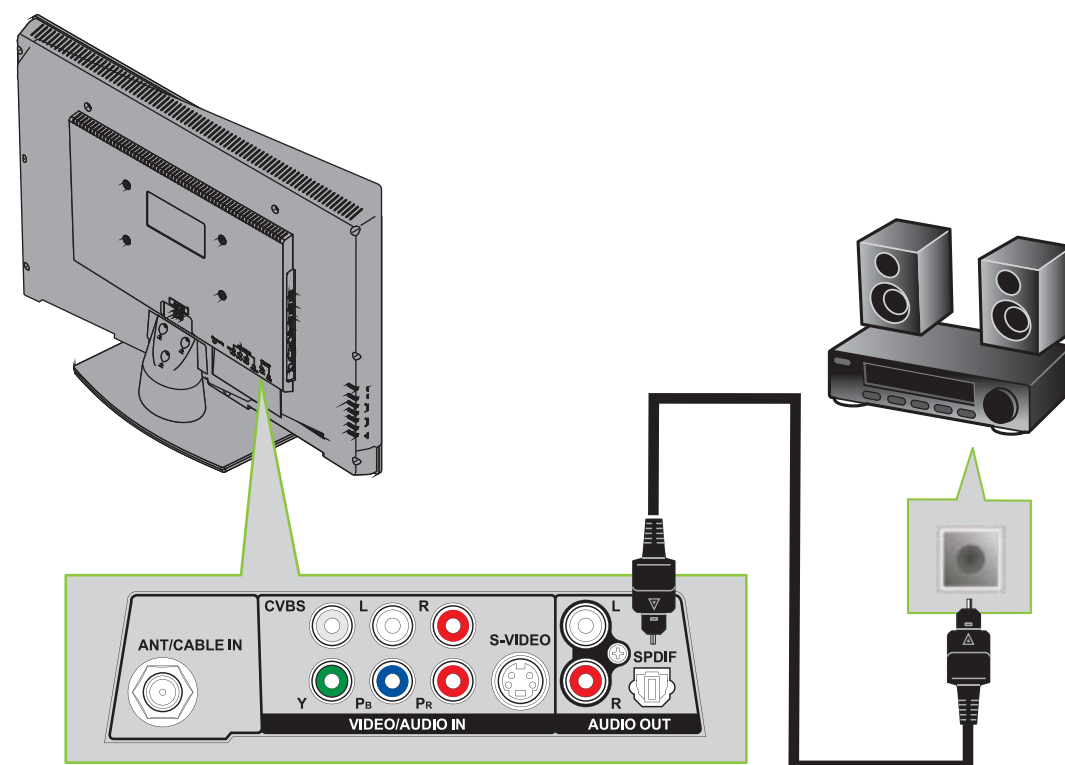
Connecting an antenna

Connect a coaxial cable (not included) to the **ANT/CABLE IN** jack on the back of your TV and the RF OUT jack on the antenna.

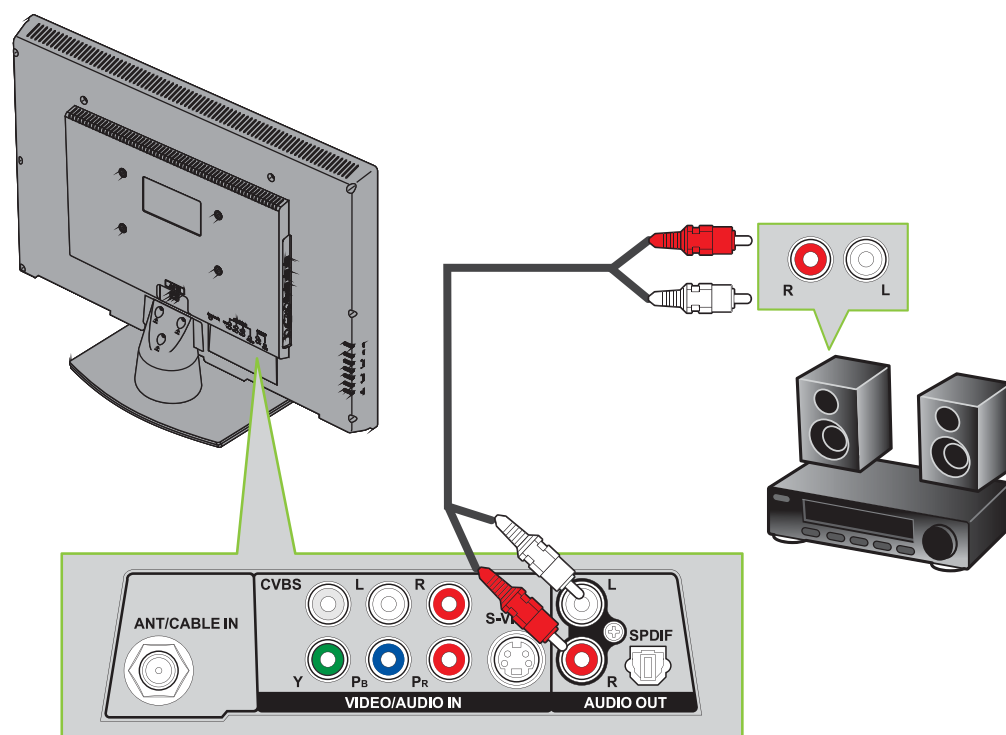


Connecting a Home Theater System

Using Digital audio

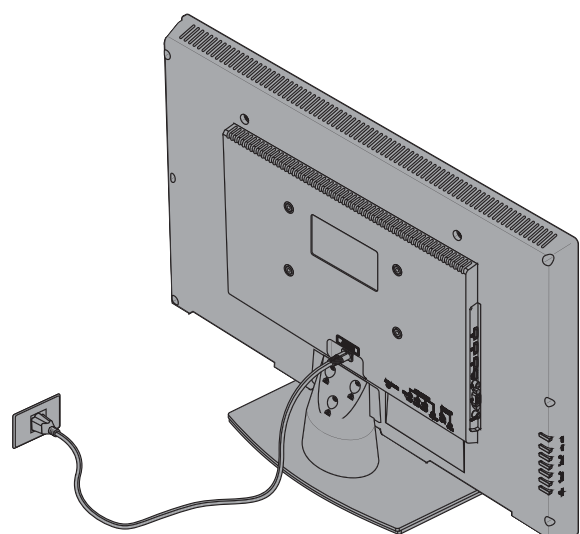


Using Analog audio



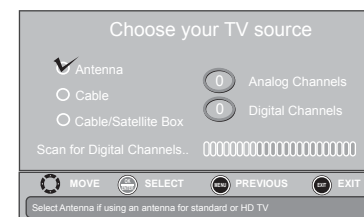
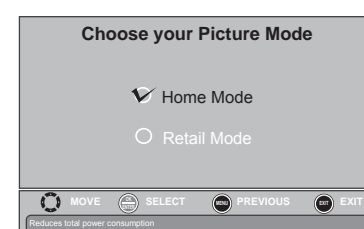
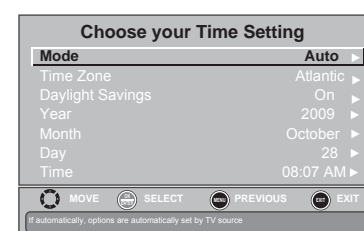
Connecting power

Plug the AC power cord into the **AC IN** jack on the back of your TV, then plug the other end of the cord into a power outlet.



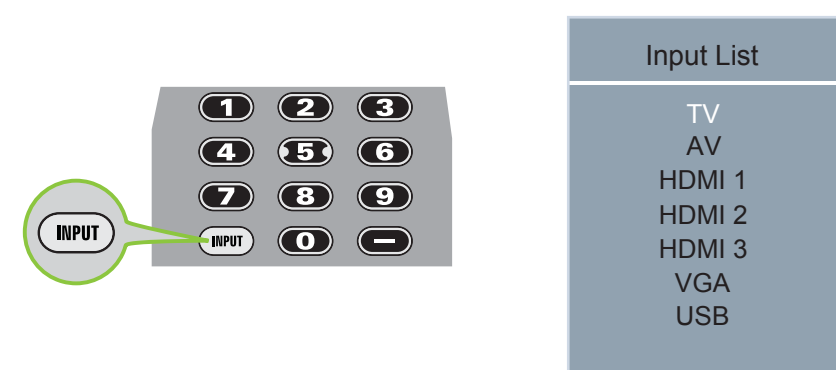
Turning on your TV for the first time

- 1 Make sure that you have installed the remote control batteries.
- 2 Press **POWER** to turn on your TV. The *Choose your menu language* screen opens. Press **▲** or **▼** to highlight the language you want, then press **ENTER**.
- 3 The *Choose your Time Setting* screen opens. Press **▲** or **▼** to highlight **Mode**, then press **◀** or **▶** to select **Custom** (to set the date and time manually) or **Auto** (to set the date and time automatically from a TV signal source based on the time zone you select).
- 4 Press **▲** or **▼** to highlight **Time Zone**, then press **◀** or **▶** to select your time zone.
- 5 Press **▲** or **▼** to highlight **Daylight Savings**, then press **◀** or **▶** to select **On**. Press **ENTER**.
- 6 The *Choose your Picture Mode* screen opens. Press **▲** or **▼** to highlight **Home Mode** or **Retail Mode**, then press **ENTER**. If you selected **Retail Mode**, select **Yes** to continue.
- 7 The *Choose your TV source* screen opens. Press **▲** or **▼** to highlight the TV signal source you want, then press **ENTER**. If you chose **Antenna** or **Cable**, your TV automatically scans for channels. To stop the auto channel search press **EXIT**.
- 8 To watch TV, press the **TV** input source button on your remote control.



Selecting the video input source

- Press **INPUT**, press **▲** or **▼** to highlight a source, then press **ENTER**. You can also press any of the video source buttons directly.



Adjusting the volume

- Press **VOL+** or **VOL-** to change the volume.
- Press **MUTE** to turn off the sound.

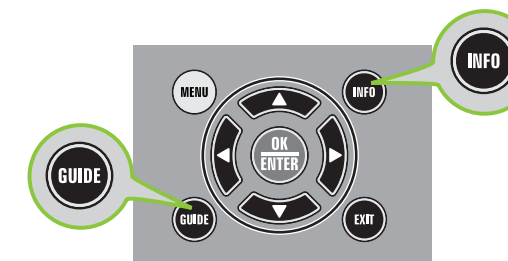
Selecting a channel

- To move to a different channel in the channel list, press **CH▲** or **CH▼**. OR
- Enter the channel number directly using the number buttons.



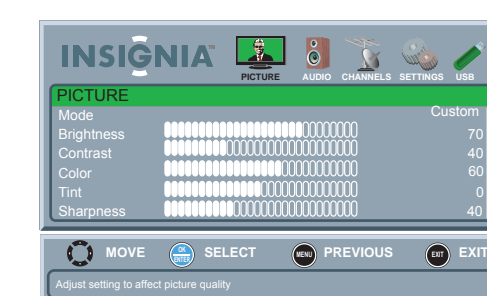
Viewing additional information

- Press **INFO** to see status information such as channel number, channel name (if available), signal source, program description, and DTV signal strength.
- Press **GUIDE** to show the digital program guide, which may show current channel name, program name, time, rating, and summaries, depending on information provided by the broadcaster.

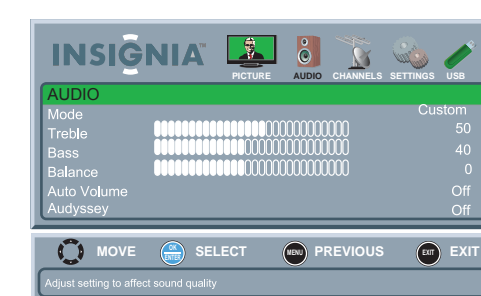


On-screen menu overview

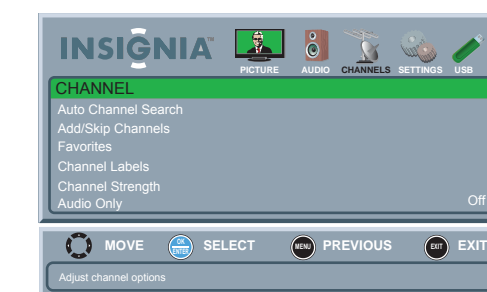
PICTURE



AUDIO



CHANNELS



SETTINGS



PHOTO



Navigating menus with your remote control

Press to open the on-screen menu



Press to select menu options.



Press to return to the previous menu



Press to move the cursor on the screen or to adjust a selected item



Press to confirm a selection or to enter a sub-menu



Press to close the menu



INSIGNIA™

Two-year limited warranty

See your *User Guide* or visit www.insigniaproducts.com for details.

Need additional help?

See your *User Guide*! This comprehensive guide includes everything from basic how-to steps to more advanced features.

Check out our **online community forum** at www.insigniaproducts.com for helpful information from other Insignia TV owners.

We're here for you

www.insigniaproducts.com

For customer service, call:

877-467-4289 (U.S./Canada markets)

01 800-926-3000 (Mexico market)

Distributed by Best Buy Purchasing, LLC

7601 Penn Avenue South, Richfield, MN USA
55423-3645

Best Buy Imports, S. de R.L. de C.V. Av. Santa Fe 485,
Segundo Piso, Colonia Cruz Manca, Programa Parcial
de Desarrollo Santa Fe, Delegación Cuajimalpa, Distrito
Federal, México 05349

RFC#BB10802114Q2

© 2010 BBY Solutions, Inc.

All rights reserved. INSIGNIA is a trademark of BBY Solutions, Inc. Registered in some countries. All other products and brand names are trademarks of their respective owners.