

QUICK SETUP GUIDE

# iPad Folio Case for most 10.2 in. to 11 in.

NS-IP2411UFB / NS-IP2411UFB-C

This folio case for most iPads 10.2 in. to 11 in. features a locking plate that securely holds your iPad in place, while allowing it to be easily removed. Your iPad will be protected from scratches and other damage with this stylish case.

PACKAGE CONTENTS

- Universal Folio Case
- Quick Setup Guide

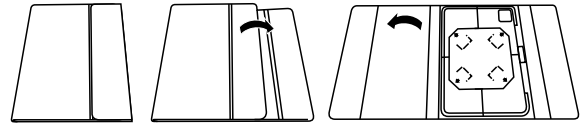
FEATURES

- Universal fit for Apple iPad 10.2 in. (7th, 8th, and 9th generation), iPad 10.9 in. (10th generation), iPad Air 10.9 in. (4th and 5th generation), iPad Air 11 in. (M2), iPad Pro 11 in. (3rd and 4th generation), and iPad Pro 11 in. (M4)
- Durable PU construction protects your iPad
- Folds into a stand for horizontal viewing and typing
- Auto sleep/wake function turns your iPad on when opening the folio and off when closing
- Precise cutouts provide access to buttons, ports, and speakers

Before using your new product, please read these instructions to prevent any damage.

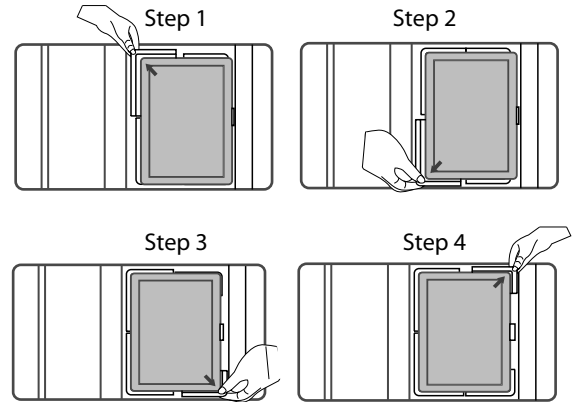
INSTALLING YOUR IPAD INTO THE FOLIO CASE

1 Open the case and lay your iPad into the retractable cradle.

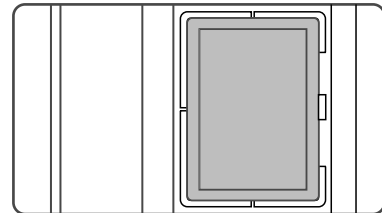


2 Pull the retractable cradle corners, as shown in the diagram below, to secure your iPad into the case.

**Note:** Follow the steps in order and pay close attention to the arrows in the diagram.

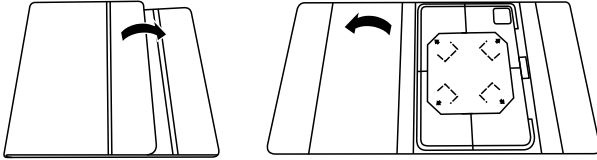


3 To remove your iPad from the case, reverse the steps shown in step 2.

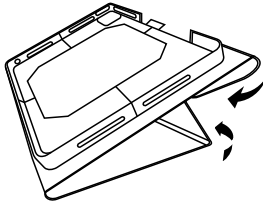


## USING YOUR FOLIO CASE AS A STAND

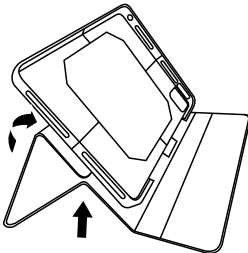
- 1** With the cover open and laying flat, lift the inside edge of the tablet mount.



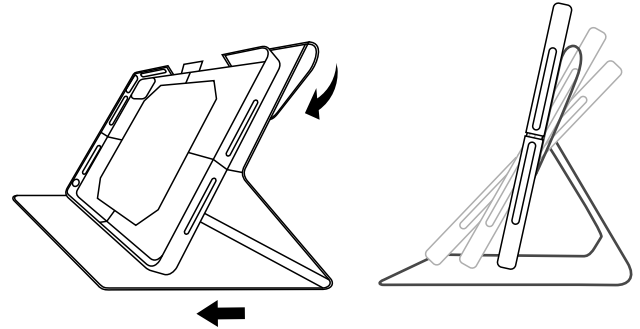
- 2 Typing angle:** Fold in the right and left edges of the outside of the cover and put the left edges of the cover under the tablet holder.



- 3 Landscape viewing angle:** Fold in the left edge of the outside of the cover and put the left edges of the cover under the tablet holder.



- 4 Adjustable landscape viewing angle:** Put the left side of tablet holder on the back side of the left cover, then fold the right edges of the outside of the cover back.



## ONE-YEAR LIMITED WARRANTY

Visit [www.insigniaproducts.com](http://www.insigniaproducts.com) for details.

## CONTACT INSIGNIA:

For customer service, call 1-877-467-4289 (U.S. and Canada)

[www.insigniaproducts.com](http://www.insigniaproducts.com)

INSIGNIA is a trademark of Best Buy and its affiliated companies.

Distributed by Best Buy Purchasing, LLC  
7601 Penn Ave South, Richfield, MN 55423 U.S.A.

©2025 Best Buy. All rights reserved.