

## 32" LED-LCD TV QUICK SETUP GUIDE

DX-32E150A11



Remote control and 2 AAA batteries



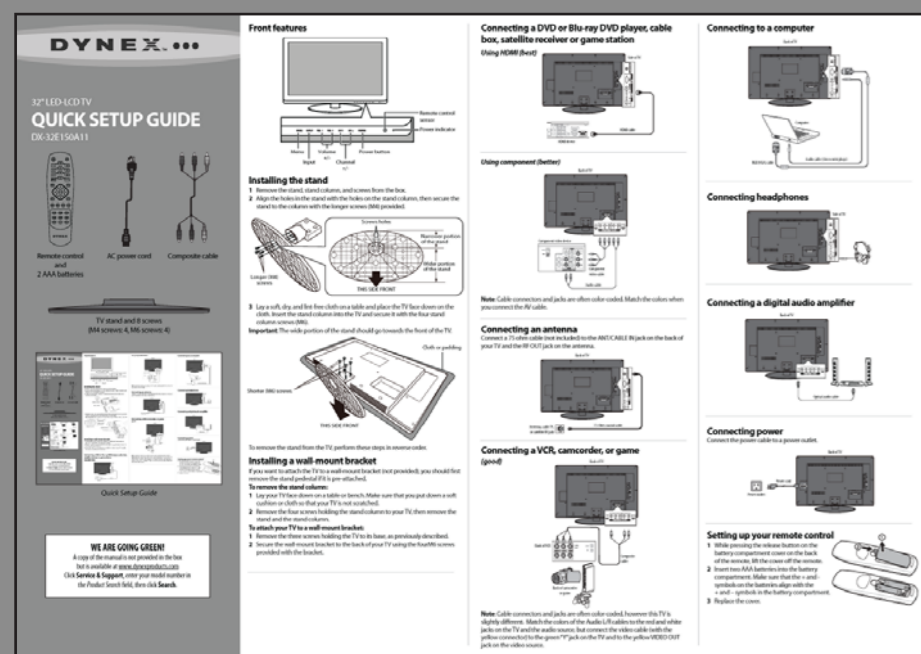
AC power cord



Composite cable



TV stand and 8 screws  
(M4 screws: 4, M6 screws: 4)

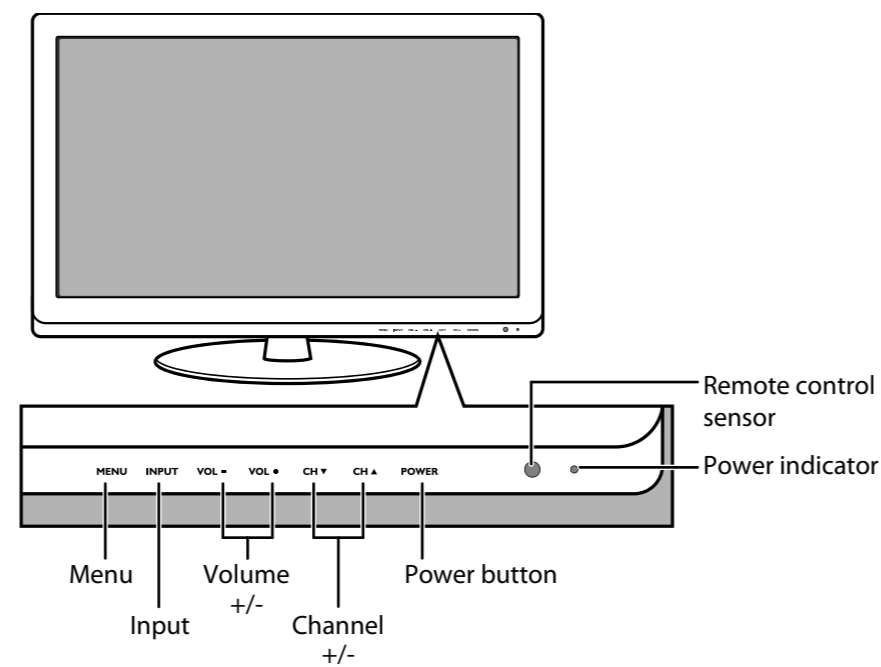


Quick Setup Guide

### WE ARE GOING GREEN!

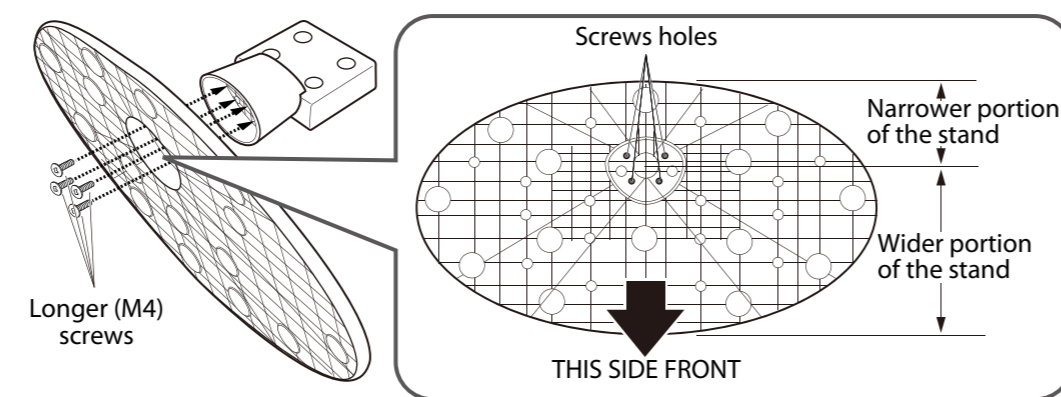
A copy of the manual is not provided in the box but is available at [www.dynexproducts.com](http://www.dynexproducts.com). Click **Service & Support**, enter your model number in the **Product Search** field, then click **Search**.

### Front features



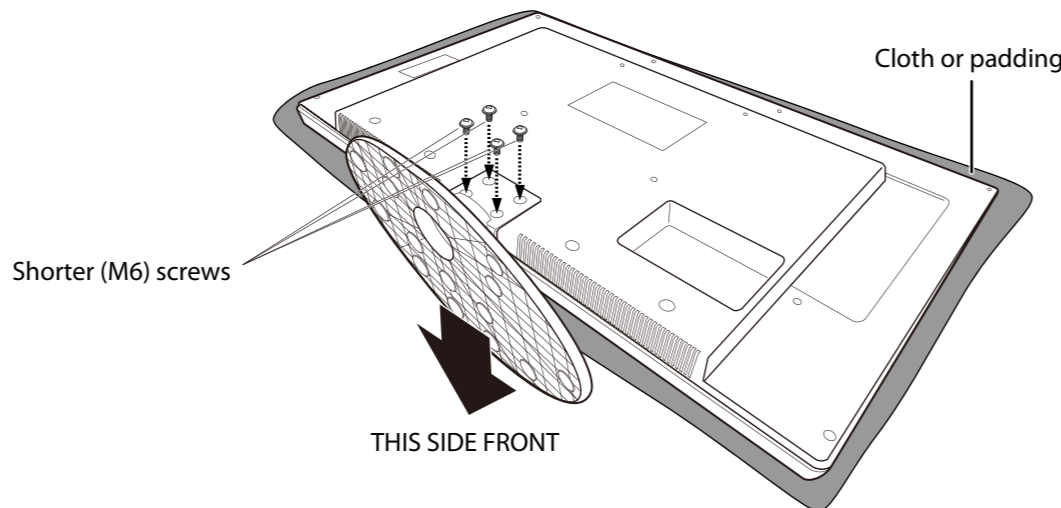
### Installing the stand

- 1 Remove the stand, stand column, and screws from the box.
- 2 Align the holes in the stand with the holes on the stand column, then secure the stand to the column with the longer screws (M4) provided.



- 3 Lay a soft, dry, and lint-free cloth on a table and place the TV face down on the cloth. Insert the stand column into the TV and secure it with the four stand column screws (M6).

**Important:** The wide portion of the stand should go towards the front of the TV.



To remove the stand from the TV, perform these steps in reverse order.

### Installing a wall-mount bracket

If you want to attach the TV to a wall-mount bracket (not provided), you should first remove the stand pedestal if it is pre-attached.

#### To remove the stand column:

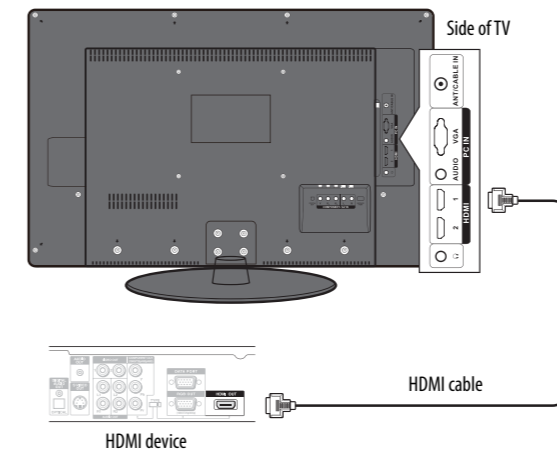
- 1 Lay your TV face down on a table or bench. Make sure that you put down a soft cushion or cloth so that your TV is not scratched.
- 2 Remove the four screws holding the stand column to your TV, then remove the stand and the stand column.

#### To attach your TV to a wall-mount bracket:

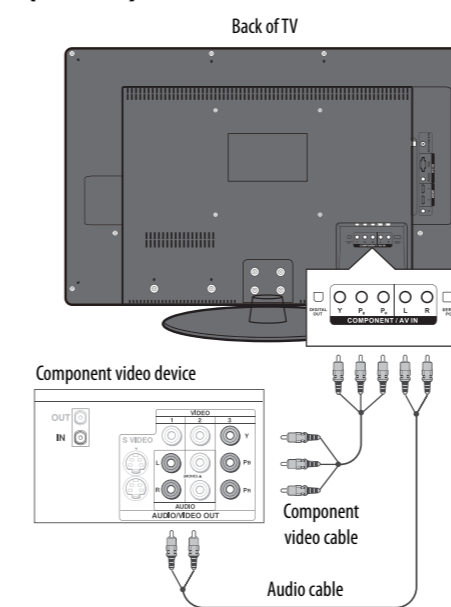
- 1 Remove the three screws holding the TV to its base, as previously described.
- 2 Secure the wall-mount bracket to the back of your TV using the four M6 screws provided with the bracket.

### Connecting a DVD or Blu-ray DVD player, cable box, satellite receiver or game station

#### Using HDMI (best)



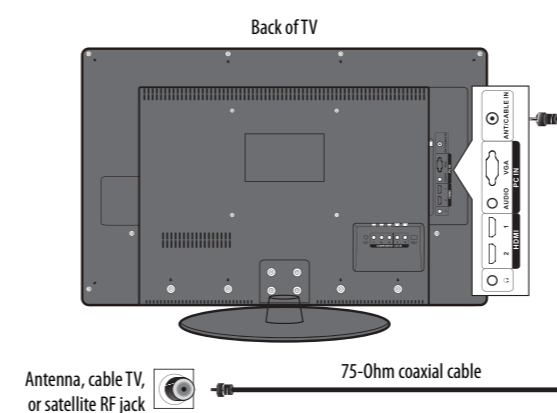
#### Using component (better)



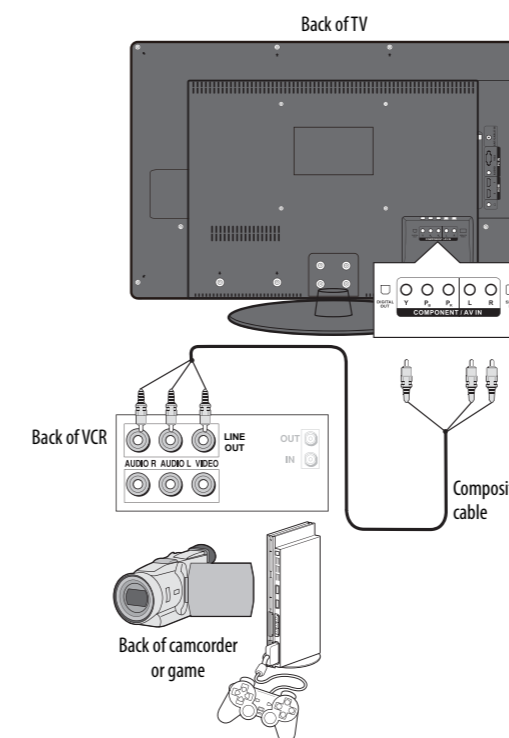
**Note:** Cable connectors and jacks are often color-coded. Match the colors when you connect the AV cable.

### Connecting an antenna

Connect a 75 ohm cable (not included) to the ANT/CABLE IN jack on the back of your TV and the RF OUT jack on the antenna.

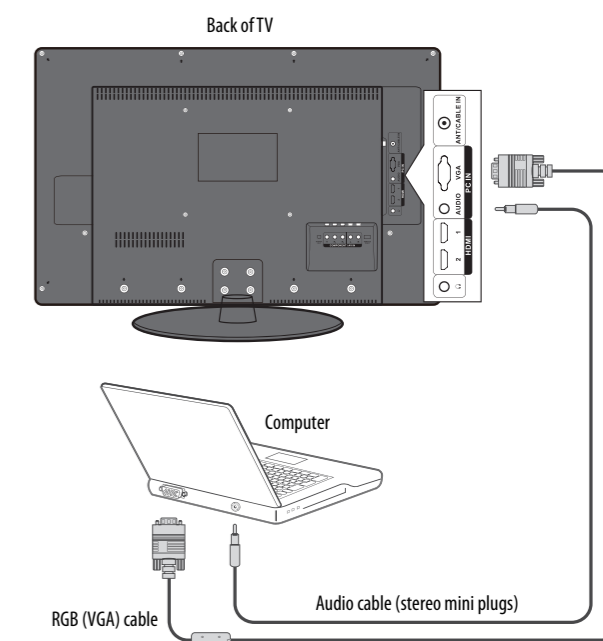


### Connecting a VCR, camcorder, or game (good)

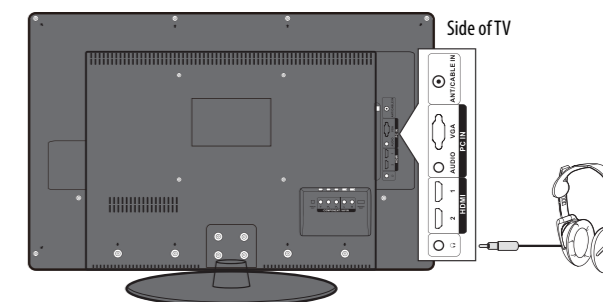


**Note:** Cable connectors and jacks are often color-coded, however this TV is slightly different. Match the colors of the Audio L/R cables to the red and white jacks on the TV and the audio source, but connect the video cable (with the yellow connector) to the green "Y" jack on the TV and to the yellow VIDEO OUT jack on the video source.

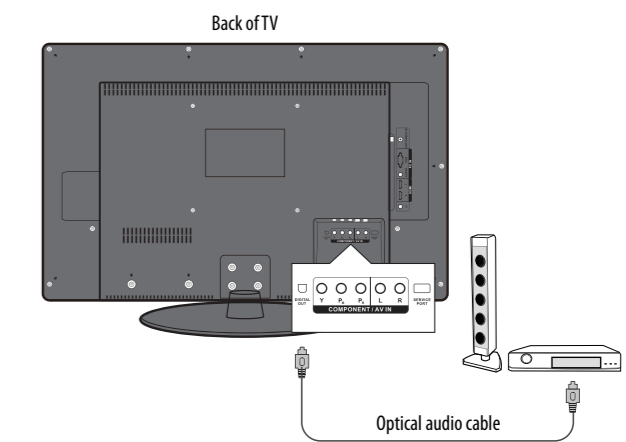
### Connecting to a computer



### Connecting headphones

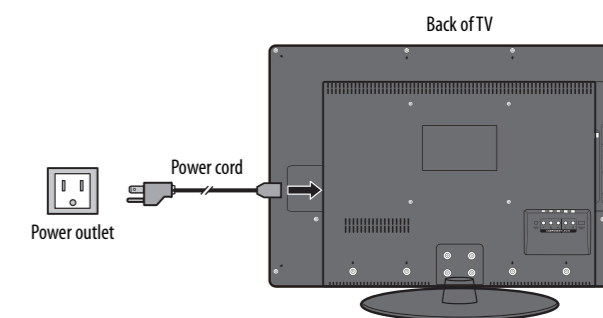


### Connecting a digital audio amplifier



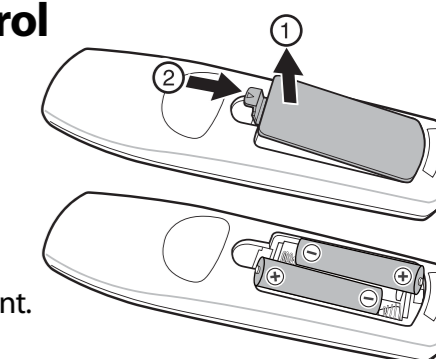
### Connecting power

Connect the power cable to a power outlet.



### Setting up your remote control

- 1 While pressing the release button on the battery compartment cover on the back of the remote, lift the cover off the remote.
- 2 Insert two AAA batteries into the battery compartment. Make sure that the + and - symbols on the batteries align with the + and - symbols in the battery compartment.
- 3 Replace the cover.



To program your existing remote control to work with your Dynex TV, see the table below for common codes. If you have problems programming your remote, or need a different remote control code, visit [www.dynexproducts.com](http://www.dynexproducts.com) for the latest remote control code information.

Click *Service & Support*, select *Find my remote control code*, enter model number in the *Product Search Field*, then click **Search**. Remote control codes are near the bottom of the page.

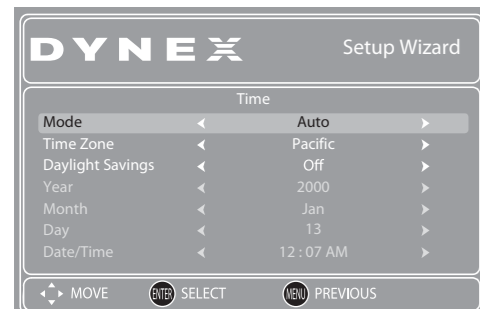
Universal remote control TV codes (for all Dynex TVs manufactured after Jan. 1, 2007)										
Universal remote control makers and models				Set-top box makers and models						
Philips PHDV05, PH4SD5, PMDVR8, PDVVR8	RCA RCL807	One for All URC-6690	Sony RM-VL600	Comcast M1057	Dish Network VIP508, VIP622	Motorola DRC800	TIVO Series 3, HD	DirectTV RC23		
115	135	0464	8043	0463	720	0463	0091	10463		

## Turning on your TV for the first time

1 Plug in your TV and turn it on. The initial *Setup Wizard* opens.



2 Press **▲** or **▼** to select the menu language you want, then press **ENTER**. The *Time* screen opens.



3 Press **▲** or **▼** to highlight **Mode**, then press **◀** or **▶** to select **Manual** (to set the date and time manually), or **Auto** (the date and time are automatically set by the TV signal source, based on the time zone you select).

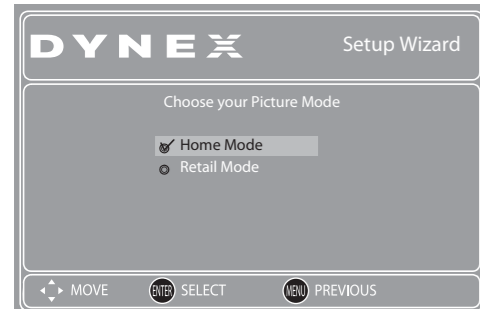
4 Press **▲** or **▼** to highlight **Time Zone**, then press **◀** or **▶** to select your time zone. You can select **Pacific, Alaska, Hawaii, Newfoundland, Atlantic, Eastern, Central, or Mountain**.

5 If your viewing area observes daylight savings time, press **▲** or **▼** to highlight **Daylight Savings**, then press **◀** or **▶** to select **On**.

6 If you selected **Manual** mode, make the settings as follows:

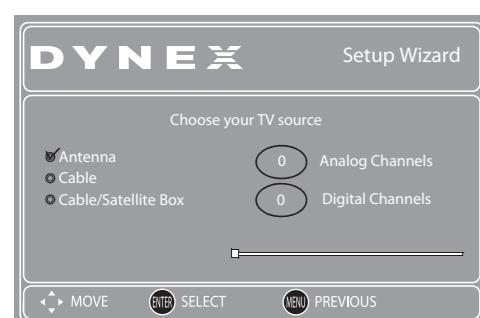
- Press **▲** or **▼** to highlight **Year, Month, or Day**, then press **◀** or **▶** to adjust the setting.
- Set the time by pressing **▲** or **▼** to highlight **Date/Time**, then press **◀** or **▶** to highlight the **hour, minute, or AM/PM** field. Press **▲** or **▼** to adjust the setting.

7 Press **ENTER**. The *Choose your Picture Mode* screen opens.



8 Press **▲** or **▼** to select **Home Mode** or **Retail Mode**, then press **ENTER**. If you select **Home Mode**, the *Choose your TV source* screen opens.

-OR-  
If you select **Retail Mode**, a message stating "Are you sure you want Retail mode? Since in this mode Energy saving is not realized." appears. Select **Yes** to proceed or **No** to exit.



9 Press **▲** or **▼** to select **Antenna, Cable, or Cable/Satellite Box**, depending on the type of connection you have.

- If you are using an antenna for a standard or HD TV signal, select **Antenna**.
- If your cable is connected directly to the TV (without a tuner box), select **Cable**.
- If your cable is connected to your TV through a tuner box, select **Cable/Satellite Box**.

10 Press **ENTER** when you have made your selection. The channel scan screen opens. If you selected **Antenna** or **Cable**, your TV automatically scans for available channels in your area and stores the channel information in the channel list. This may take several minutes. While scanning, the TV displays a progress report.

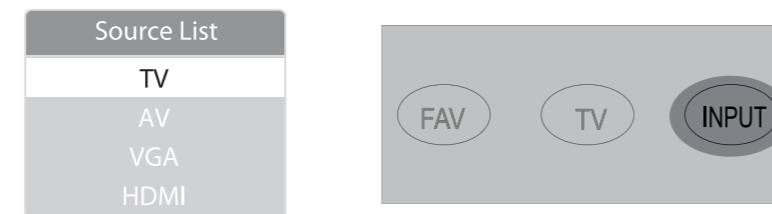
- OR -

If you selected **Cable/Satellite Box**, the auto scan is not necessary and the screen will ask you to select the correct input source for your set top box. Press **EXIT** to close the menu.

11 Select the corresponding video input source through the *INPUT SOURCE* menu.

## Selecting the video input source

1 Turn on your TV, then press the **INPUT** key on the remote, or the **INPUT** button on the TV. The *Source List* menu opens.



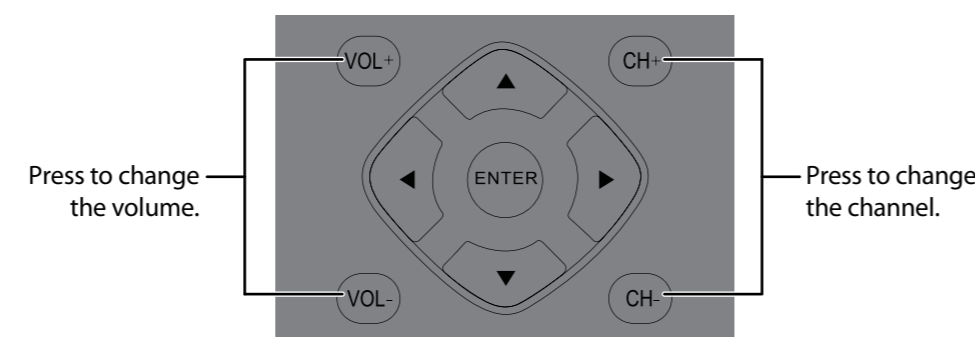
2 Press **▲** or **▼** to highlight the video source, then press **ENTER**. You can also press any of the video source buttons directly.

## Adjusting the volume

- Press **VOL+** or **VOL-** to change the volume.
- Press **MUTE** to turn off the sound.

## Selecting a channel

- To move to a different channel in the channel list, press **CH^** or **CHV**. OR
- Enter the channel number directly using the number buttons.

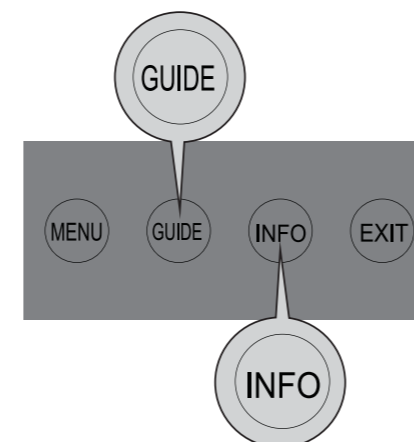


## Viewing channel information

- Press **INFO** to view an information banner. The information banner shows the current program information such as channel number, video input source, and resolution.

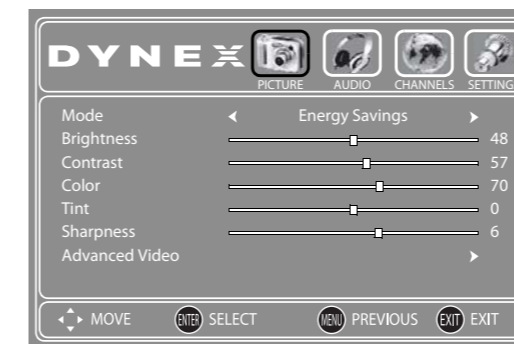
- Digital mode information—Displays program name, time, channel number, audio information, channel label, TV rating, resolution, and current signal strength.
- Analog mode information—Displays channel number, channel label (if preset), signal type, audio information, resolution, and current signal strength.

- Press **GUIDE** to show the digital program guide, which may view a list of available programs, program times, and program summaries, depending on the information provided by the broadcaster.

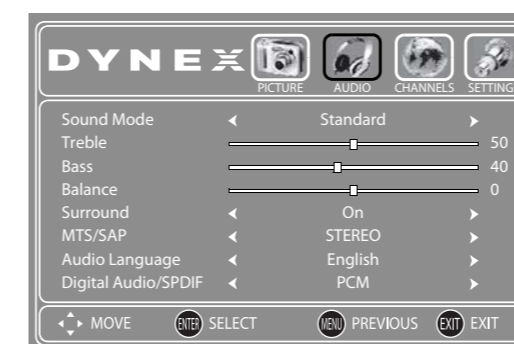


## On-screen menu overview

### PICTURE menu



### AUDIO menu



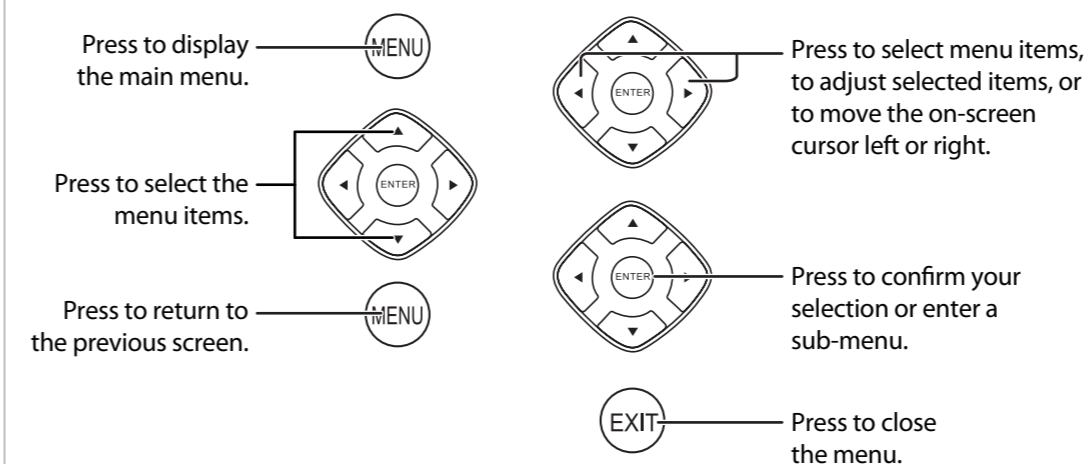
### CHANNELS menu



### SETTINGS menu



## Navigating menus with your remote control



# DYNEX

## One-year limited warranty

Visit [www.dynexproducts.com](http://www.dynexproducts.com) for details.

## Need additional help?

See your *User Guide*! This comprehensive guide includes everything from basic how-to steps to more advanced features. Go to [www.dynexproducts.com](http://www.dynexproducts.com), click **Service & Support**, enter your model number in the *Product Search* field, then click **Search**.

## We're here for you

[www.dynexproducts.com](http://www.dynexproducts.com)

For customer service, call:

**800-305-2204 (U.S./Canada markets)**

**01 800-926-3020 (Mexico market)**

Distributed by Best Buy Purchasing, LLC  
7601 Penn Avenue South, Richfield, MN USA 55423-3645  
Best Buy Imports, S. de R.L. de C.V. Av. Santa Fe 485, Segundo Piso, Colonia Cruz Manca, Programa Parcial de Desarrollo Santa Fe, Delegación Cuajimalpa, Distrito Federal, México 05349  
RFC#BBI0802114Q2

© 2010 BBY Solutions, Inc., All Rights Reserved.  
DYNEX is a trademark of BBY Solutions, Inc. Registered in some countries. All other products and brand names are trademarks of their respective owners.