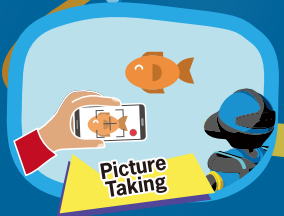


DIVER

Programmable Wheeled Robot

Roll Your Path
Capture Your Growth

W-01

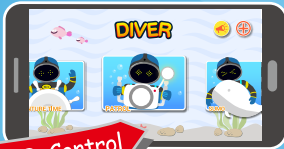




Programmable Wheeled Robot

Your first robot pal !

XYZrobot's wheeled robot is a multifunctional robot equipped with light sensor for line-tracking function, a wireless camera that takes videos and snap shot from different angles. For more interactive with Diver, you can program the Matrix LED eyes and soundtracks By build-in IR sensor to avoid obstacles, it is fully controllable through smart phone device to play hide & seek and more games.



Battery

AA (1.5V) x8 , 12V

I/O

DC Jack x1 , USB 2.0 x1

Storage

Micro SD Card

Wi-Fi Camera

IEEE802.11b/g/n

LED Matrix

5x7 LEDs Matrix

Servo Motor

Head x 1
Waist x 1

Speaker

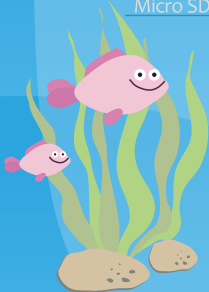
2W x 1

DC Motors

Wheels x 2

Sensors

IR Sensor x 3
Color Sensor x 2



MCU	ATmega1280	APP Control	iOS / Android	Power Supply	12V / 2A (Optional)
Camera	640 x 480	Bluetooth	4.0	Dimension	198x153x248 mm
Storage	Micro SD (4GB)	Buttons	Power Switch , Mode Switch	Weight (kg/lbs)	1 kg

