

PACKAGE CONTENTS

- CANON® Shoe Cord
- *Quick Setup Guide*

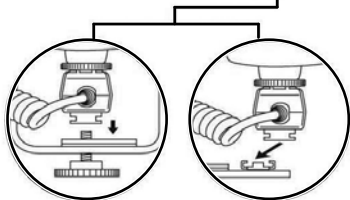
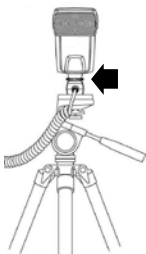
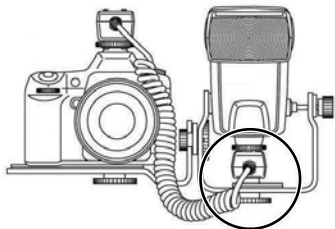
FEATURES

- Operate your hot shoe mount flash remotely.
- Use on-camera functions without being attached to the camera.
- Ideal for most photography, especially portrait or merchandise.
- Move flash away from the lens to get rid of red-eye.
- Single TTL use only.



USING YOUR CANON SHOE CORD

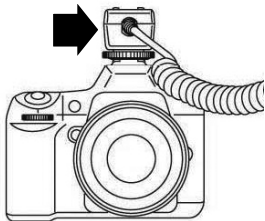
- 1 Turn off the camera.
- 2 Attach the mounting foot end to a tripod or other secure base.
- 3 Attach the flash to the hot shoe on the top of the mounting foot end.



By screw

On the shoe

- 4 Attach the other end of the cord to the hot shoe on the top of your DSLR camera.



Note: The other hot shoe can be used to mount other non-TTL accessories.

- 5 Set up the camera and flash for off-camera shooting.

SPECIFICATIONS

Model	NS-CANTTL
Compatible camera	Canon® only
Compatible flash range	Recommended for Canon TTL flashes. (Also works with most non-TTL flashes, but will not support advanced features.)
Cord length	8 ft. (2.4 m) (extended length)
Net weight	4.48 oz. (127 g)

ONE-YEAR LIMITED WARRANTY

For complete warranty, visit
www.insigniaproducts.com.

CONTACT INSIGNIA

For customer service, call 1-877-467-4289
(U.S. and Canada) or
01-800-926-3000 (Mexico)
www.insigniaproducts.com

INSIGNIA is a trademark of Best Buy and its affiliated companies.

Registered in some countries.

Distributed by Best Buy Purchasing, LLC
7601 Penn Ave South, Richfield, MN 55423 U.S.A.

©2014 Best Buy. All rights reserved.

Made in China