



KW-Z900W

Monitor with Receiver



FEATURES & HIGHLIGHTS

- 9" HD capacitive touchscreen (1280x720 resolution)
- Floating panel design with ball-joint adjustment (vertical/horizontal tilt)
- Anti-glare, anti-fingerprint surface
- 1-DIN chassis, 117.3mm depth
- JVC branding with customizable wallpaper (preset only)
- HOME menu and SRC key customizable (4 quick-access icons)
- Gesture touch control
- Multi-touch support for Android Auto
- Display OFF & dummy power OFF modes
- Anti-glare display, SYNC dimmer sensor
- Bluetooth 5.3 (Dual Phone + AAC/SBC)
- External mic included
- USB Type-A (rear, 2.1A charging)
- HDMI input (Type-D)
- 3 RCA Preouts (3V)
- SiriusXM Ready
- iDataLink Maestro Ready
- UPC: 046838505294



HDMI TYPE-D



1 AV INPUT OUTPUT



AUDIO STREAMING



WIRELESS MIRRORING



X2 CAMERA INPUTS



CAPACITIVE TOUCH PANEL



HD REAR CAMERA



13 BAND EQUALIZER



PARKING GUIDELINES

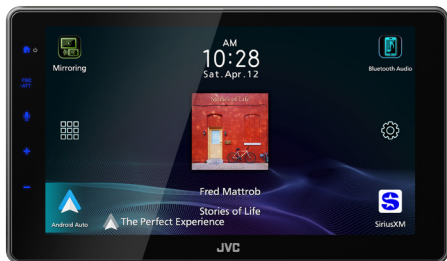


TIME ALIGNMENT

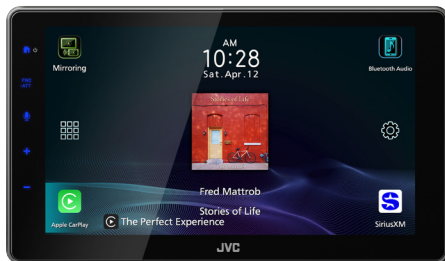


KW-Z900W

Monitor with Receiver



1 - Google Assistant



2 - Apple HomeKit



3 - SiriusXM Radio

- 1 - Use the Google Assistant in Android Auto to control smart home devices and perform other helpful functions.
- 2 - Control Apple HomeKit enabled accessories like thermostats & lights using Apple CarPlay's Siri voice commands.
- 3 - Access additional music, sports and entertainment content on the go with SiriusXM Radio.



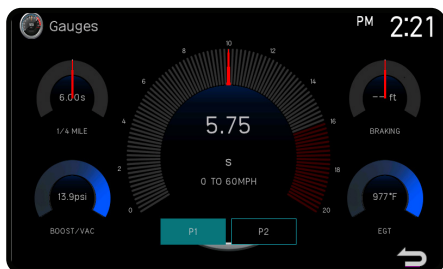
Wireless / Wired Mirroring

- Display your smartphone screen or other device via USB, HDMI, Bluetooth or Wi-Fi.
- USB Mirroring with Touch Control Android only.

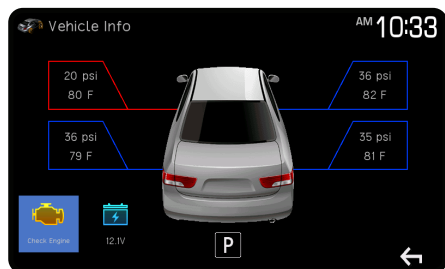
IDATALINK MAESTRO COMPATIBLE



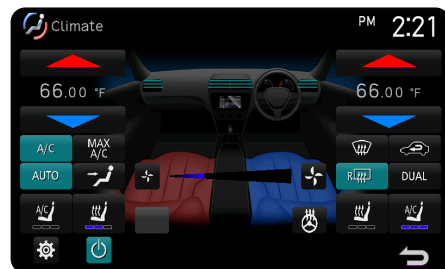
When an iDatalink Maestro RR is connected, it provides a seamless interface with factory infotainment features. Vehicle information such as HVAC, performance, and TPMS can be displayed on select vehicles.



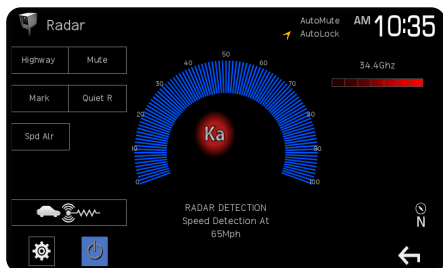
Gauges



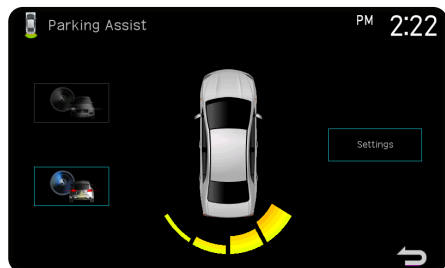
Vehicle Info



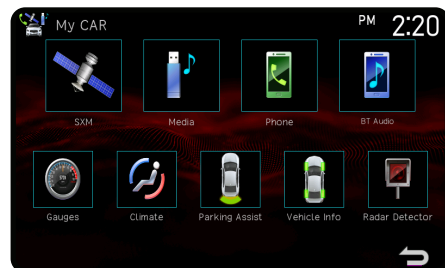
Climate



Radar Detector



Parking Assist



Factory Infotainment