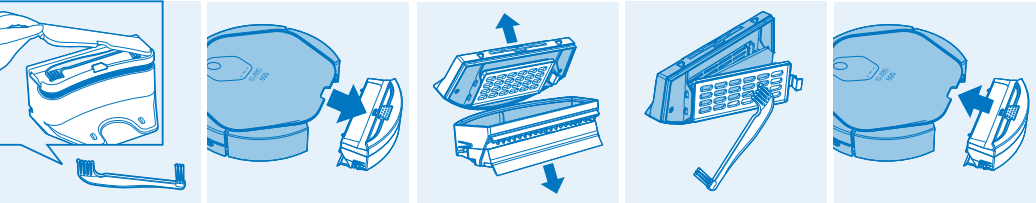
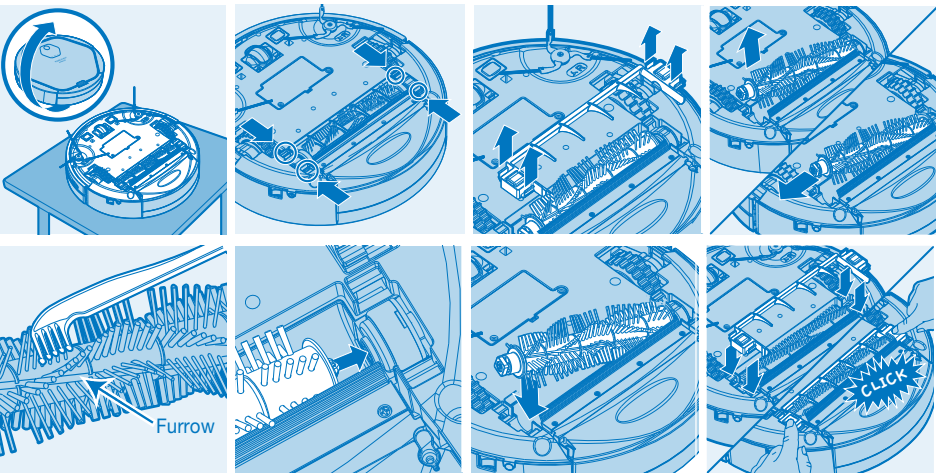


eX500 care & maintenance

1. Regularly empty the dust bin and replace the antibacterial filter



2. Cleaning the main brush



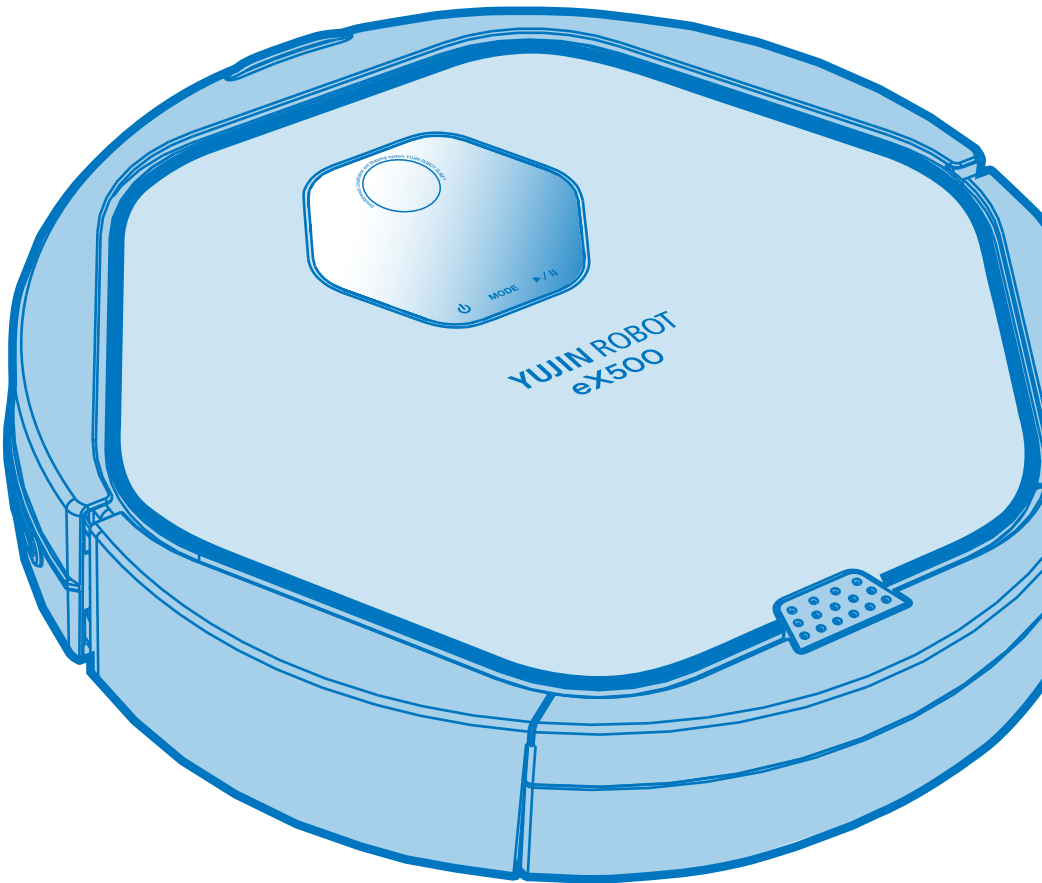
3. Display window error messages & solutions

Check display	Cause	Solution
C 1	Lifted wheel	Move eX500 to a flat area.
C 2	Cannot detect floor	Move eX500 to a flat area in case the wheel was stuck on a obstacle.
C 3	Dust bin error	Dust bin is not properly assembled or installed.
C 4	Wheel motor overload	Check if a foreign material such as hair or lint is caught in the wheel and remove the material.
C 5	Brush motor overload	Check if a foreign material such as hair or lint is caught in the main brush or side brush and remove the material.
C 6	Suction motor overload	Clean filter, empty the dust bin.
C 7	Internal system error	Turn off the power switch of the robot cleaner then turn it on again.
C 8	Magnetic Sensor	Check that the front wheel and magnetic sensor are clean and correctly installed.



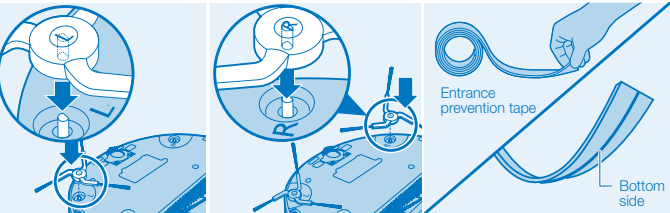
INTELLIGENT CLEANING
eX500

YCR-M05
Quick Start Guide
Robotic Vacuum Cleaner eX500

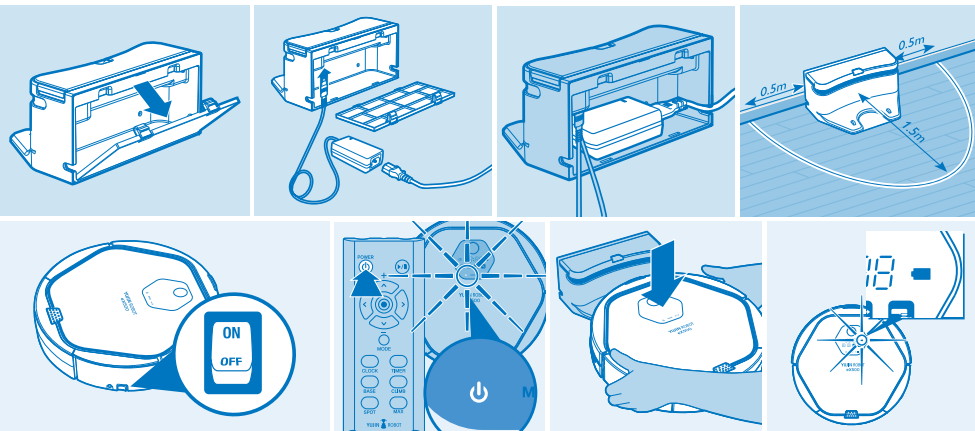


Installing eX500

1. Preparation of the robotic vacuum cleaner



2. Installing the Charging Station and start charging



Using eX500

1. Changing vacuum modes

Method	Start	Changing cleaning mode
Remote control	POWER → ▶/	POWER → MODE → ▶/ POWER → SPOT → ▶/ POWER → MAX → ▶/
eX500	POWER → ▶/	POWER → MODE → ▶/

2. Setting the current time

On Device	Setting the time (Remote control is required to set the time)
Remote control	CLOCK → +, - → ENTER → +, - → ENTER
Display Window	00:00 → 00:00 (Set "hour") → 00:00 (Set "minute")

- 1) Press the "Clock" button on the remote control.
- 2) Use the +/- buttons to set the hour, then press "Enter".
- 3) Use the +/- buttons to set the minute, then press "Enter".
- 4) The iClebo will confirm the time is set with a beep.
- 5) Press the set button when correct time is displayed.

3. Setting a scheduled cleaning

※ eX500 starts cleaning at the set time every day, completes a cleaning cycle, and then returns to the charging station.

On Device	Setting the TIMER (Remote control is required to set the time)
Remote control	TIMER → +, - → ENTER → +, - → ENTER
Display Window	00:00 → 00:00 (Set "hour") → 00:00 (Set "minute")

1) Before setting a scheduled cleaning's start time, make sure to set the clock with the current time.
2) For timer cleaning, use +/- buttons to set "hour" and press Enter button and use +/- buttons to set "minutes" and press Enter button. Once the time setting completes, select the cleaning mode and press Enter button.
※ To check the start time: press the TIMER button once.
To cancel the set time: press the TIMER button twice.

Climbing mode

- ※ CLIMB is set "on" by default but can be deselected on the remote control in AUTO or RANDOM modes and also within MAX or SPOT cleaning. When CLIMB is set eX500 can cross obstacles up to 0.79 inches in height. Sometimes the shape of a surface of an obstacle may prevent the robot from climbing over it even when it is less than 0.79 inches in height.
- ※ Deselect CLIMB when circumstances require cleaning without climbing over obstacles of 0.2 inches or higher that need to be avoided (shag rug for example). eX500 will always climb over obstacles up to 0.2 inches in height

※ Note: SPOT and MAX modes are only available via the remote control.

Set the mode with	Cleaning mode	Explanation	Cleaning mode	Explanation
Remote control & iClebo	AUTO	AUTO is the default cleaning mode that uses Smart Navigation to move in a systematic cleaning pattern to cover the entire cleaning area.	RANDOM	RANDOM cleans for a set time (60 min, by default). In RANDOM mode eX500 often covers areas one or more times increasing the quality of the cleaning. After selecting RANDOM mode use the +/- buttons on the remote control to set the cleaning duration.
Only with the remote control	SPOT	eX500 cleans within a range of 1.6 m ² with a zigzag pattern.	MAX	In MAX cleaning mode the iClebo first operates in AUTO mode where it uses its camera to systematically navigate the entire accessible area. After that eX500 enters RANDOM mode and continues cleaning until the battery runs low making sure you will be happy with its double cleaning job.

Status	Explanation	Status	Explanation
Mopping	This cleaning mode is automatically entered once the mop plate is mounted on the bottom of eX500. It is recommended that CLIMB mode be deselected when in mopping mode.	Door sill adjust	By using the CLIMB function the iClebo's climbing ability will be increased from 0.20 inches to cross obstacles up to a height of about 0.79 inches. Sometimes the shape of the surface of an obstacle may prevent eX500 from climbing over it even when the obstacle is less than 0.79 inches in height.

※ If you wish to clean without eX500 climbing over obstacles of 0.20 inches or higher such as rugs or doorsills, deselect climbing mode by pressing CLIMB before using.