

# User Guide



Weatherband Clock Radio

**NS-CLW01**



# Insignia NS-CLW01

## Weatherband Clock Radio

### Contents

Welcome . . . . .	3
Important safety instructions . . . . .	3
Features . . . . .	6
Setting up your weatherband clock radio . . . . .	9
Using your weatherband clock radio . . . . .	12
Troubleshooting . . . . .	17
Legal notices . . . . .	18
90-day limited warranty . . . . .	19

### Welcome

Congratulations on your purchase of a high-quality Insignia product. Your NS-CLW01 represents the state of the art in weatherband clock radios and is designed for reliable and trouble-free performance.

### Important safety instructions

- 1) Read these instructions.
- 2) Keep these instructions.
- 3) Heed all warnings.
- 4) Follow all instructions.
- 5) Do not use this apparatus near water.
- 6) Clean only with dry cloth.
- 7) Do not block any ventilation openings. Install in accordance with the manufacturer's instructions.
- 8) Do not install near any heat sources such as radiators, heat registers, stoves, or other apparatus (including amplifiers) that produce heat.
- 9) Do not defeat the safety purpose of the polarized or grounding-type plug. A polarized plug has two blades with one wider than the other. A grounding type plug has two blades and a third grounding prong. The wide blade or the third prong are provided for your safety. If the provided plug does not fit into your outlet, consult an electrician for replacement of the obsolete outlet.

10) Protect the power cord from being walked on or pinched particularly at plugs, convenience receptacles, and the point where they exit from the apparatus.

11) Only use attachments/accessories specified by the manufacturer.

12) Use only with the cart, stand, tripod, bracket, or table specified by the manufacturer, or sold with the apparatus.

When a cart is used, use caution when moving the cart/apparatus combination to avoid injury from tip-over.



13) Unplug this apparatus during lightning storms or when unused for long periods of time.

14) Refer all servicing to qualified service personnel. Servicing is required when the apparatus has been damaged in any way, such as power-supply cord or plug is damaged, liquid has been spilled or objects have fallen into the apparatus, the apparatus has been exposed to rain or moisture, does not operate normally, or has been dropped. To prevent fire or shock hazard, do not plug the power cord into an extension cord, receptacle, or other outlet unless the blades can be fully inserted to prevent blade exposure. To prevent fire or shock hazard, do not expose this appliance to rain or moisture.

The apparatus shall not be exposed to dripping or splashing and that no objects filled with liquids, such as vases, shall be placed on the apparatus.

- **Attachments**—Do not use attachments not recommended by Insignia because they may cause hazards.
- **Water and moisture**—Do not use your weatherband clock radio near water. Such as near a bath tub, in a wet basement, or near a swimming pool.
- **Power sources**—Use only the type of power source indicated on the label. If you are not sure of the type of power supply to your home, consult Insignia Technical Support or your local power company. For clock radios intended to operate from battery power or other sources, refer to the operating instructions.
- **Surge protector**—We recommend the use of a surge protector for the AC power connection. Lightning and power surges ARE NOT covered under warranty for this product.
- **Lightning**—For added protection for your weatherband clock radio during a lightning storm, or when it is left unattended and unused for long periods of time, unplug the AC power cord from the power outlet. This will prevent damage to your weatherband clock radio due to lightning and power line surges.
- **Overloading**—Do not overload power outlets and extension cords, because this can result in a risk of fire or electric shock.

- **Object and liquid entry**—Never insert objects of any kind into your weatherband clock radio through openings, because they may touch dangerous voltage points or short out parts that could result in a fire or electric shock. Never spill liquid of any kind on your weatherband clock radio.
- **Damage requiring service**—Unplug your weatherband clock radio's AC power from the power outlet and refer servicing to qualified service personnel under the following conditions:
  - When the power supply cord or plug is damaged or frayed.
  - If liquid has been spilled, or objects have fallen into your weatherband clock radio.
  - If your weatherband clock radio has been exposed to rain or water.
  - If your weatherband clock radio does not operate normally by following the operating instructions. Adjust only those controls that are covered by the operating instructions, because incorrect adjustment of other controls may result in damage and often requires extensive work by a qualified technician to restore your weatherband clock radio to its normal operation.
  - If your weatherband clock radio has been dropped or damaged in any way.
  - When your weatherband clock radio exhibits a distinct change in performance.
- **Replacement parts**—When replacement parts are required, make sure that the service technician uses replacement parts specified by the manufacturer that have the same characteristics as the original part. Unauthorized substitutions may result in fire, electric shock, injury to persons, or other hazards.
- **Safety check**—Upon completion of any service or repairs to your weatherband clock radio, ask the service technician to perform routine safety checks to determine that your weatherband clock radio is in correct operating condition.

To completely disconnect the weatherband clock radio from electric power, the AC power plug should be disconnected from the AC power outlet completely.

**Warning**

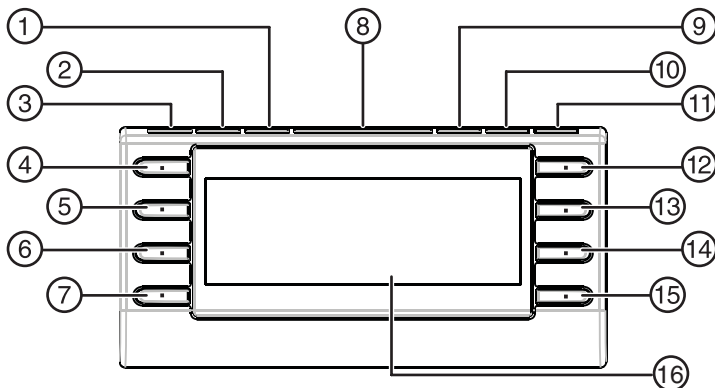
Please refer the information on exterior bottom enclosure for electrical and safety information before installing or operating the apparatus.

## Features

Package contents:

- Weatherband clock radio
- Outdoor temperature transmitter
- Transmitter mount with mounting screws (3)
- Battery (CR2032 x 1)
- User Guide

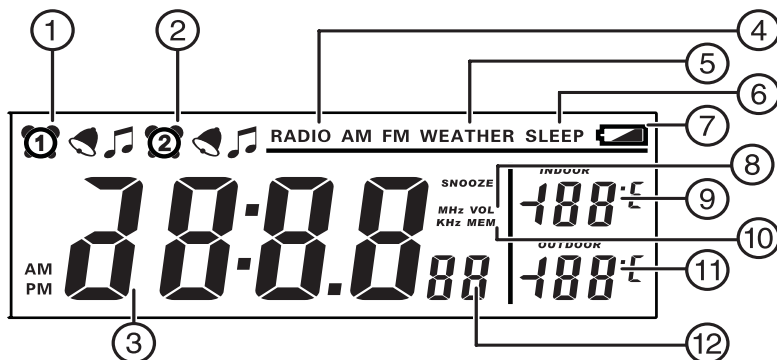
## Front panel



#	Description	Function
1	<b>ALARM 1</b> button	Press to set Alarm 1.
2	<b>TIME SET/TEMP</b> button	Press and hold for two seconds to set the time. Press and release to toggle between Fahrenheit and Centigrade temperature.
3	<b>RADIO ON/OFF</b> button	Press once to turn the radio on. Press again to turn the radio off.
4	<b>TUNE+</b> button	Press to tune the radio to a higher station.
5	<b>TUNE-</b> button	Press to tune the radio to a lower station.
6	<b>AM/FM</b> button	Press to toggle between the AM band and the FM band.
7	<b>INSTANT WEATHER</b> button	Press to go directly to a NOAA weather station.
8	<b>SNOOZE/DIMMER</b> button	Press to temporarily turn off the alarm (snooze), when the alarm is sounding. Press to set the backlight level to high, middle, or low, when the alarm is off.
9	<b>ALARM 2</b> button	Press to set Alarm 2.
10	<b>SLEEP</b> button	Press to set the sleep timer, which automatically turns off the radio after the time duration selected. Press repeatedly to select the duration.

#	Description	Function
11	<b>PRESET MEMORY</b> button	Press to set radio station presets.
12	<b>VOL+</b> button	Press to increase the radio volume.
13	<b>VOL–</b> button	Press to decrease the radio volume.
14	<b>PRESET+</b> button	In radio mode, press to select the next preset station. In memory mode, press to select the preset number for the station.
15	<b>PRESET–</b> button	In radio mode, press to select the previous preset station. In memory mode, press to select the preset number for the station.
16	LCD display	Displays the current time, temperature, and radio information.

## LCD display



#	Description	Function
1	Alarm 1 status icon	Indicates the status of Alarm 1. The icon to the right of the status icon indicates your selection. <ul style="list-style-type: none"> <li>• Bell icon—wake to buzzer</li> <li>• Music note icon—wake to music</li> <li>• No icon—alarm 1 off</li> </ul>
2	Alarm 2 status icon	Indicates the status of Alarm 2. The icon to the right of the status icon indicates your selection. <ul style="list-style-type: none"> <li>• Bell icon—wake to buzzer</li> <li>• Music note icon—wake to music</li> <li>• No icon—alarm 2 off</li> </ul>
3	Main display	Shows the current time, radio frequency, sleep time setting, or alarm ring time.
4	RADIO	Lights when radio is on. AM or FM icons to the right indicate the band selected.
5	WEATHER	Lights when a weather station is selected.
6	SLEEP	Lights when the sleep timer is set.
7	Battery capacity icon	Indicates the battery status.
8	Volume setting	Shows the volume setting of the radio.
9	Indoor temperature	Shows the indoor temperature in °F or °C.
10	MEM icon	Indicates a preset is selected.
11	Outdoor temperature	Shows the outdoor temperature in °F or °C.
12	Preset station number	Indicates the preset number selected.



# Setting up your weatherband clock radio

## Supplying power

Your weatherband clock radio can either be powered by plugging the radio into an AC power outlet or by installing four AA batteries (not included).

### *Plugging in your weatherband clock radio*

#### **To plug in your weatherband clock radio:**

- 1 Place your weatherband clock radio in a convenient place and find an AC power outlet within range of the power cord.
- 2 Plug the power cord into the AC power outlet.

#### **Caution**

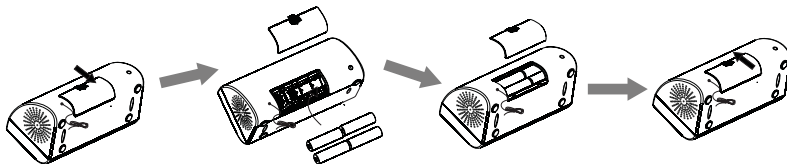
To protect your weatherband clock radio during thunderstorms, unplug the AC power cord from the AC power outlet.

### *Installing batteries*

In addition to installing four main power batteries to operate your weatherband clock radio without AC power, you can also install a backup battery (included) to provide temporary power in case the AC power fails or the optional main batteries fail. The outside temperature transmitter also requires two AA batteries (not included) to operate.

#### **To install main power batteries:**

- 1 Turn your weatherband clock radio around to the back, then open the door to the battery compartment.



- 2 Insert four (4) AA batteries (not included) into the battery compartment. Make sure that you match the + and – symbols on the batteries with the + and – symbols in the battery compartment.

- 3 Reinstall the battery compartment door and turn your weatherband clock radio around to the normal operating position.

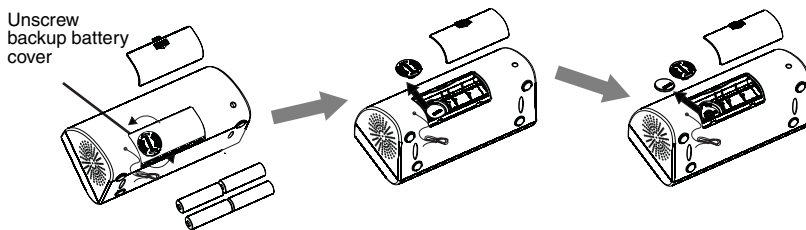
### Caution

Follow these precautions when using batteries in this device:

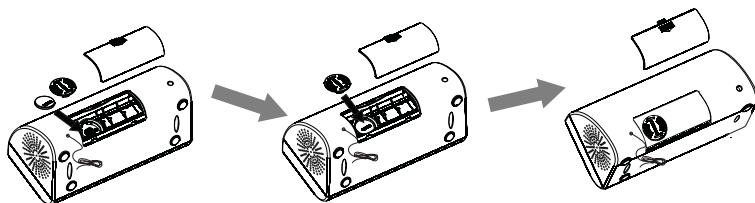
- Use only the size and type of batteries specified.
- Make sure that you follow the correct polarity as indicated in the battery compartment when installing batteries. Reversed batteries may cause damage to the clock radio.
- Do not mix different types of batteries together (for example, alkaline, rechargeable, and carbon zinc), or semi-used batteries with fresh ones.
- If your clock radio is not to be used for a long period of time, remove the batteries to prevent damage or injury from possible battery leakage.
- Do not try to recharge batteries not intended to be recharged, because they can overheat and rupture. (Follow battery manufacturer's directions.)
- Batteries should not be exposed to excessive heat, such as sunshine, fire, or the like. Dispose of used batteries as hazardous waste.
- Danger of explosion if battery is incorrectly replaced. Replace only with the same or equivalent type.

### To install a backup battery:

- 1 Unplug your weatherband clock radio, then turn it around to the back and open the door to the battery compartment.
- 2 Remove the four AA main batteries (if necessary), then remove the cover of the backup battery slot by unscrewing it and lifting it out of the compartment.



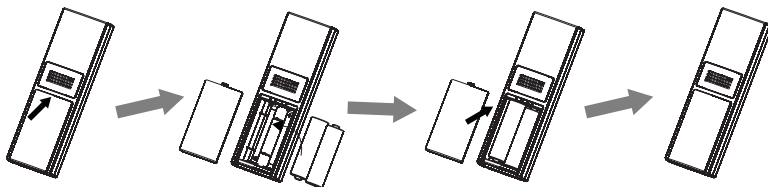
- 3 Insert one (1) CR2032 button cell battery (included) into the battery compartment. Make sure that the + symbol on the battery is facing up.



- 4 Reinstall the backup battery slot cover, then replace the four AA batteries (if necessary).
- 5 Close the battery compartment door and turn your weatherband clock radio around to the normal operating position.
- 6 Plug in your radio.

**To install batteries in the outside temperature transmitter:**

- 1 Open the battery compartment of the outside temperature transmitter.

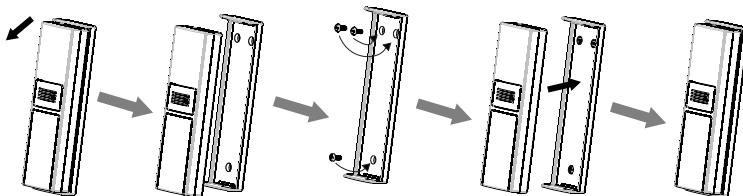


- 2 Install two AA batteries in the battery compartment. Make sure that you match the + and – symbols on the battery with the + and – symbols in the battery compartment.
- 3 Close the battery compartment door.

***Mounting the outside temperature transmitter***

**To mount the outside temperature transmitter:**

- 1 Remove the mounting bracket from the transmitter, if necessary.



- Place the mounting bracket in the desired location and mark the location for the three mounting screws with a pencil.

**Tip**

- We recommend that you mount the transmitter on the North side of your house, away from sources of heat or cold (such as windows or vents) and out of direct sunlight or rain.
- The range of the transmitter is 80 ft. (24.4 m) in open space. The signal will penetrate walls, but the range will be decreased. Concrete and metal structures will further decrease the range.
- The transmitter should not be mounted on a metal surface or close to sources of possible interference, such as cordless appliances and microwave ovens.
- The temperature transmitter should be mounted vertically to transmit the signal well.
- The FM antenna should be opened and the direction adjusted to receive the best signal.

- Start pilot holes for the screws where you marked their location.
- Screw the mounting bracket onto the mounting location with the three screws provided. Make sure that the screws are flush with the bracket.
- Snap the transmitter into the mounting bracket.

## Using your weatherband clock radio

### Using the clock and alarm

**To set the clock:**

- Press and hold **TIME SET/TEMP** until the hour blinks on the display.



- Press **TUNE+** or **TUNE-** to set the hour.

- 3 Press **TIME SET/TEMP**. The minutes blink on the display.



- 4 Press **TUNE+** or **TUNE-** to set the minutes.
- 5 Press **TIME SET/TEMP** to store the setting and return to standby mode.

#### To set the alarm:

**Tip**

You can set Alarm 1 for weekdays and Alarm 2 for weekends.

- 1 Press and hold **ALARM 1** (or **ALARM 2**, depending on the alarm you want) until the hour blinks.



- 2 Press **TUNE+** or **TUNE-** to set the hour.

- 3 Press **ALARM 1** (or **ALARM 2**, depending on the alarm you want). The minutes blink on the display.



- 4 Press **TUNE+** or **TUNE-** to set the minutes.
- 5 Press **ALARM 1** (or **ALARM 2**) to store the setting and return to standby mode.
- 6 Press **ALARM 1** (or **ALARM 2**) repeatedly to set the alarm mode. Settings include:
  - Wake to buzzer—Bell icon appears to the right of the alarm icon
  - Wake to music—Music note icon appears to the right of the alarm icon
  - Alarm off—Alarm icon disappears.

### To turn the alarm off:

- 1 Press any button other than **SNOOZE/DIMMER** to turn off the alarm. The alarm will be set for the same time the following day.
- 2 If you do not want to set the alarm for the next day, press **ALARM 1** or **ALARM 2** until the alarm icon disappears from the display.

### To use the snooze:

- 1 While the alarm is sounding, press **SNOOZE/DIMMER**. The alarm turns back on automatically 9 minutes later.
- 2 To cancel snooze (the alarm will not turn back on), press any button other than **SNOOZE/DIMMER**. The alarm will be set for the same time the following day.

## Playing the radio

### To play the radio:

- 1 Press **RADIO ON/OFF** to turn on your weatherband clock radio.
  - To select the radio band you want to listen to, press **AM/FM**.

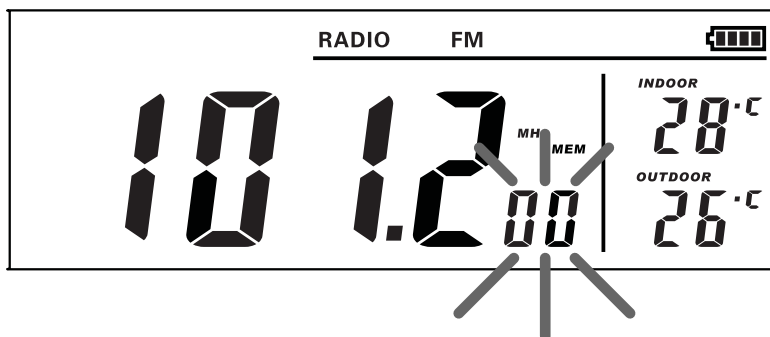
- To tune the radio up or down and select the station you want, press **TUNE+** or **TUNE-**.
- To auto search for stations, press and hold **TUNE+** or **TUNE-** for more than two seconds.
- To adjust the volume to a comfortable level, press either the **VOL+** or **VOL-** button.
- To tune to the next preset station, press **PRESET+**.
- To tune to the previous preset station, press **PRESET-**.
- To tune to a weather station, press **INSTANT WEATHER**.

2 Press **RADIO ON/OFF** to turn off the weatherband clock radio.

## Setting and using radio presets

### To use presets:

- 1 Press **RADIO ON/OFF** to turn on your weatherband clock radio.
- 2 Press **AM/FM** to select the radio band you want to listen to.
- 3 Press **TUNE+** or **TUNE-** to tune the radio up or down and select the station you want.
- 4 To save the station as a preset, press **PRESET MEMORY**. “MEM” and “00” blink on the display.

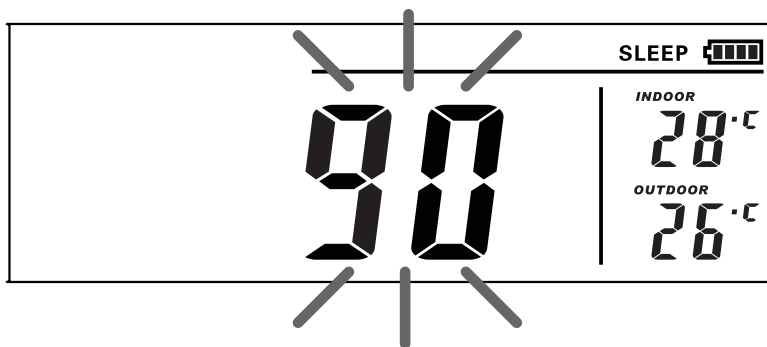


- 5 Press **PRESET+** or **PRESET-** to select the preset number you want to designate for that station.
- 6 Press **PRESET MEMORY** again to confirm the setting. The station is stored in memory.
- 7 Repeat Steps 3 to 6 to store as many as 10 AM presets and 10 FM presets.
- 8 To select a preset station, briefly press **PRESET+** or **PRESET-** repeatedly until you reach the station you want. “MEM” appears on the display, along with the preset number selected and the station frequency.

## Setting the sleep timer

### To set the sleep timer:

- 1 Press **SLEEP** once when the radio is on. The “SLEEP” indicator appears in the display, and “90” appears (blinking) on the display (indicating that the weatherband clock radio will turn off after 90 minutes).

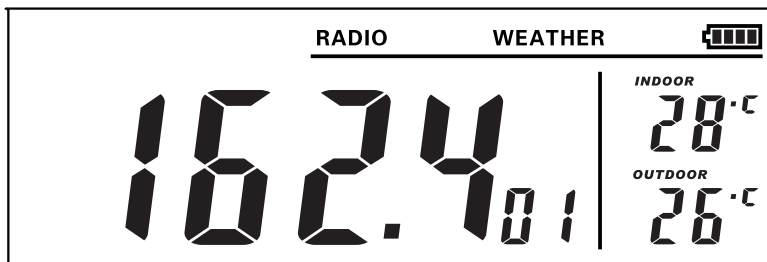


- 2 Repeatedly press **SLEEP** to decrease the sleep timer in 10 minute increments.
- 3 To cancel the sleep function, repeatedly press **SLEEP** until “0” shows on the display.

## Accessing a weather channel

### To access a weather channel:

- 1 Press **INSTANT WEATHER** when the radio is on. “WEATHER” appears on the display and your weatherband clock radio begins searching NOAA Weather Broadcasts for the best reception.



- 2 Press **TUNE+** or **TUNE-** to change weather channels manually.
- 3 Press **RADIO ON/OFF** to turn off the weather channel.



## Adjusting the backlight

To set the backlight level:

- 1 Make sure the power is connected.
- 2 Press **SNOOZE/DIMMER** to set the display backlight to a comfortable level, except when the alarm is on. Your choices include **High**, **Middle**, or **Low**.

## Selecting the temperature display

To select the temperature display:

- Press **TIME SET/TEMP** to toggle between °F and °C.

## Troubleshooting

**Caution**

Do not try to repair the clock radio yourself. Doing so will invalidate your warranty.

Problem	Solution
The radio does not turn on when <b>RADIO ON/OFF</b> is pressed	Make sure that your radio is plugged into an AC power outlet or that four AA batteries are installed.
No sound	Increase the volume.
The sound has interference	Make sure that the radio is not too close to a TV or other appliance.
The LCD display is too dim	Replace the batteries or adjust the backlight.

## Specifications

Power supply	AC 120V/60Hz (DC 6 V/0.4 A)
FM band	87.5 - 107.9 MHz in 200 KHz steps (USA)
AM band	530 - 1710 KHz in 10 KHz steps (USA)
Weather band	Weatherband
Output power	1 Watt
Speaker	2.25" x 1
Operating temp. (Max)	14 - 104°F (-10 - 40°C) Outdoor -22 -140°F (-30 - 60°C)

## Legal notices

### ***FCC warning***

Changes or modifications not expressly approved by the party responsible for compliance with the FCC Rules could void the user's authority to operate this equipment.

### ***FCC Part 15***

This device complies with Part 15 of the FCC Rules. Operation of this product is subject to the following two conditions: (1) this device may not cause harmful interference, and (2) this device must accept any interference received, including interference that may cause undesired operation.

This equipment has been tested and found to comply within the limits for a class B digital device, pursuant to Part 15 of the FCC Rules. These limits are designed to provide reasonable protection against harmful interference in a residential installation. This equipment generates, uses, and can radiate radio frequency energy and, if not installed and used in accordance with the instructions, may cause harmful interference to radio communications. However, there is no guarantee that interference will not occur in a particular installation. If this equipment does cause harmful interference to radio or television reception, which can be determined by turning the equipment off and on, the user is encouraged to try to correct the interference by one or more of the following measures:

- Reorient or relocate the receiving antenna.
- Increase the separation between the equipment and receiver.
- Connect the equipment into an outlet on a circuit different from that to which the receiver is connected.
- Consult the dealer or an experienced technician for help.

### ***Energy Star®***

As an Energy Star Partner, Insignia has determined that his product or product models meet the Energy Star guidelines for energy efficiency.



## 90-day limited warranty

Insignia Products ("Insignia") warrants to you, the original purchaser of this new **NS-CLW01** ("Product"), that the Product shall be free of defects in the original manufacture of the material or workmanship for a period of 90 days from the date of your purchase of the Product ("Warranty Period"). This Product must be purchased from an authorized dealer of Insignia brand products and packaged with this warranty statement. This warranty does not cover refurbished Product. If you notify Insignia during the Warranty Period of a defect covered by this warranty that requires service, terms of this warranty apply.

### ***How long does the coverage last?***

The Warranty Period lasts for 90 days from the date you purchased the Product. The purchase date is printed on the receipt you received with the Product.

### ***What does this warranty cover?***

During the Warranty Period, if the original manufacture of the material or workmanship of the Product is determined to be defective by an authorized Insignia repair center or store personnel, Insignia will (at its sole option): (1) repair the Product with new or rebuilt parts; or (2) replace the Product at no charge with new or rebuilt comparable products or parts. Products and parts replaced under this warranty become the property of Insignia and are not returned to you. If service of Products or parts are required after the Warranty Period expires, you must pay all labor and parts charges. This warranty lasts as long as you own your Insignia Product during the Warranty Period. Warranty coverage terminates if you sell or otherwise transfer the Product.

### ***How to obtain warranty service?***

If you purchased the Product at a retail store location, take your original receipt and the Product to the store you purchased it from. Make sure that you place the Product in its original packaging or packaging that provides the same amount of protection as the original packaging. If you purchased the Product from an online web site, mail your original receipt and the Product to the address listed on the web site. Make sure that you put the Product in its original packaging or packaging that provides the same amount of protection as the original packaging.

To obtain in-home warranty service for a television with a screen 30 inches or larger, call 1-888-BESTBUY. Call agents will diagnose and correct the issue over the phone or will have an Insignia-approved repair person dispatched to your home.

### ***Where is the warranty valid?***

This warranty is valid only to the original purchaser of the product in the United States, Canada, and Mexico.

### ***What does the warranty not cover?***

This warranty does not cover:

- Customer instruction
- Installation
- Set up adjustments
- Cosmetic damage
- Damage due to acts of God, such as lightning strikes
- Accident
- Misuse
- Abuse
- Negligence
- Commercial use

- Modification of any part of the Product, including the antenna
- Plasma display panel damaged by static (non-moving) images applied for lengthy periods (burn-in).

This warranty also does not cover:

- Damage due to incorrect operation or maintenance
- Connection to an incorrect voltage supply
- Attempted repair by anyone other than a facility authorized by Insignia to service the Product
- Products sold as is or with all faults
- Consumables, such as fuses or batteries
- Products where the factory applied serial number has been altered or removed

REPAIR REPLACEMENT AS PROVIDED UNDER THIS WARRANTY IS YOUR EXCLUSIVE REMEDY. INSIGNIA SHALL NOT BE LIABLE FOR ANY INCIDENTAL OR CONSEQUENTIAL DAMAGES FOR THE BREACH OF ANY EXPRESS OR IMPLIED WARRANTY ON THIS PRODUCT, INCLUDING, BUT NOT LIMITED TO, LOST DATA, LOSS OF USE OF YOUR PRODUCT, LOST BUSINESS OR LOST PROFITS. INSIGNIA PRODUCTS MAKES NO OTHER EXPRESS WARRANTIES WITH RESPECT TO THE PRODUCT, ALL EXPRESS AND IMPLIED WARRANTIES FOR THE PRODUCT, INCLUDING, BUT NOT LIMITED TO, ANY IMPLIED WARRANTIES OF AND CONDITIONS OF MERCHANTABILITY AND FITNESS FOR A PARTICULAR PURPOSE, ARE LIMITED IN DURATION TO THE WARRANTY PERIOD SET FORTH ABOVE AND NO WARRANTIES, WHETHER EXPRESS OR IMPLIED, WILL APPLY AFTER THE WARRANTY PERIOD. SOME STATES, PROVINCES AND JURISDICTIONS DO NOT ALLOW LIMITATIONS ON HOW LONG AN IMPLIED WARRANTY LASTS, SO THE ABOVE LIMITATION MAY NOT APPLY TO YOU. THIS WARRANTY GIVES YOU SPECIFIC LEGAL RIGHTS, AND YOU MAY ALSO HAVE OTHER RIGHTS, WHICH VARY FROM STATE TO STATE OR PROVINCE TO PROVINCE.

Contact Insignia:

For customer service please call 1-877-467-4289

[www.insigniaproducts.com](http://www.insigniaproducts.com)

Distributed by Best Buy Purchasing, LLC

7601 Penn Avenue South, Richfield, Minnesota, U.S.A. 55423-3645

© 2009 Best Buy Enterprise Services, Inc.

All rights reserved. INSIGNIA is a trademark of Best Buy Enterprise Services, Inc. Registered in some countries. All other products and brand names are trademarks of their respective owners.



[www.insigniaproducts.com](http://www.insigniaproducts.com) (877) 467-4289

Distributed by Best Buy Purchasing, LLC  
7601 Penn Avenue South, Richfield, MN USA 55423-3645  
© 2009 Best Buy Enterprise Services, Inc.

All rights reserved. INSIGNIA is a trademark of Best Buy Enterprise Services, Inc. Registered in some countries.  
All other products and brand names are trademarks of their respective owners.

ENGLISH  
09-0289