



JLAB AUDIO  
EPIIC EXECUTIVE  
EARBUDS

**We love that you are rocking JLab Audio!**  
**We take pride in our products and fully stand behind them.**



#### YOUR SATISFACTION IS GUARANTEED

You may exchange or return merchandise purchased within 30 days of the purchase date. Please return the item to the location you purchased it. If your item has been opened or used, restrictions may apply.



#### YOUR WARRANTY

You may register your product at [jlabaudio.com/register](https://jlabaudio.com/register). All warranty claims are subject to JLab Audio authorization and at our sole discretion. Retain your proof of purchase to ensure warranty coverage.



#### CONTACT US

Reach out to us at [support@jlabaudio.com](mailto:support@jlabaudio.com) or visit [jlabaudio.com/contact](https://jlabaudio.com/contact).

## AUDIO BURN-IN

Burn-in is the process for exercising new audio equipment. Most headphones require at least 40 hours of burn-in time to reach their optimal performing state. The main purpose of the burn-in process is to loosen the diaphragm of a newly crafted headphone and to stress the headphone driver. Most audiophiles agree that the sound quality will be noticeably improved after burn-in.

 **Burn-in your audio equipment with the JLab Audio app available on the App Store and Google Play**  
Or download our burn-in method at: [jlabaudio.com/pages/audio-burn-in](https://jlabaudio.com/pages/audio-burn-in)

## PARTS / ACCESSORIES



## BUTTON FUNCTIONS

### POWER ON / OFF:

Press and hold 3 seconds

### PLAY / PAUSE / ANSWER / HANG UP:

Quick Press

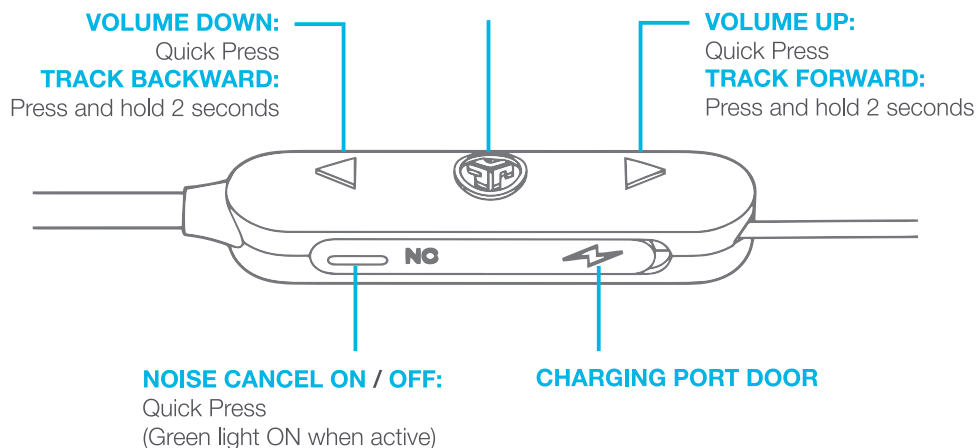
### ACTIVATE SIRI (iOS) OR "OK GOOGLE" (ANDROID):

Click twice

### BLUETOOTH PAIR:

Press and hold 8 seconds

(see **FIRST TIME SETUP**)



## VOICE PROMPTS



### "HELLO"

Power is ON.

"BATTERY FULL" = 100-75%

"BATTERY MEDIUM" = 75-25%

"LOW BATTERY" = Less than 25%

### "READY TO PAIR"

JLab Epic Executive earbuds are ready to connect to your Bluetooth device.

### "YOU'RE CONNECTED"

JLab Epic Executive earbuds are connected to your Bluetooth device and ready for use.

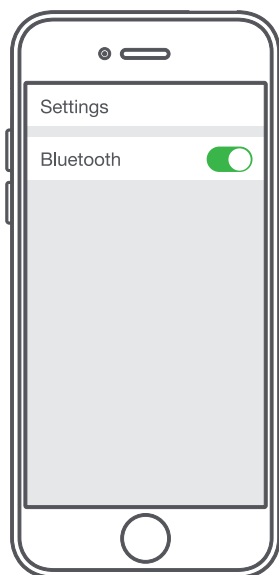
### "GOODBYE"

Power turning OFF.

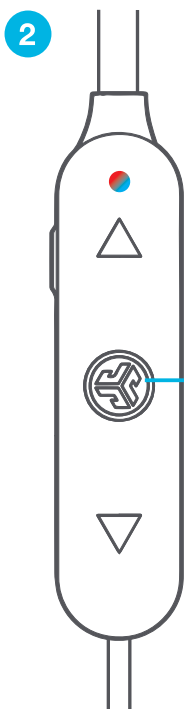
## BLUETOOTH FUNCTION

### FIRST TIME SETUP

- 1 Turn on the Bluetooth in your device settings.

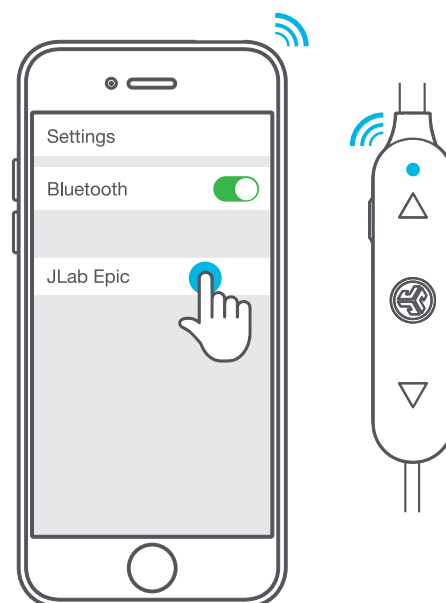


- 2 Press and hold button for **8 seconds**.  
Release.  
Lights will **blink red and blue** to indicate pairing mode.



- 3 Select "JLab Epic" in your device settings to connect.

Lights will **slow blink blue** when Bluetooth is paired.



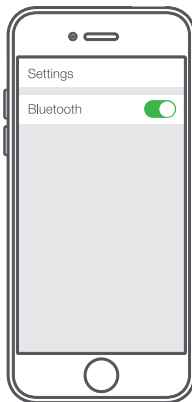
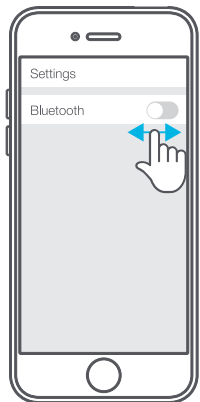
## RECURRING USE

Once JLab Epic Executive has initially paired to your device, the earbuds will auto-connect to your Bluetooth device when powered back ON. (see **BUTTON FUNCTIONS** instructions)

## CONNECTION TROUBLESHOOTING

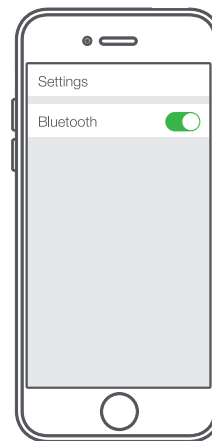
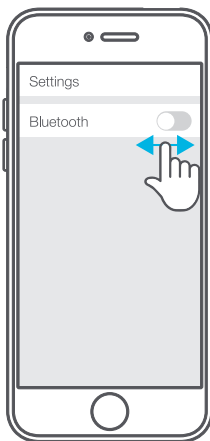
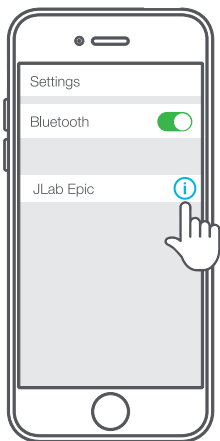
### I DO NOT SEE JLAB EPIC IN MY DEVICE

- 1 Turn Bluetooth off and then back on in device settings.
- 2 If you still do not see JLab Epic, repeat **FIRST TIME SETUP** directions.



### JLAB EPIC DOES NOT RECONNECT TO MY DEVICE AFTER POWERING ON

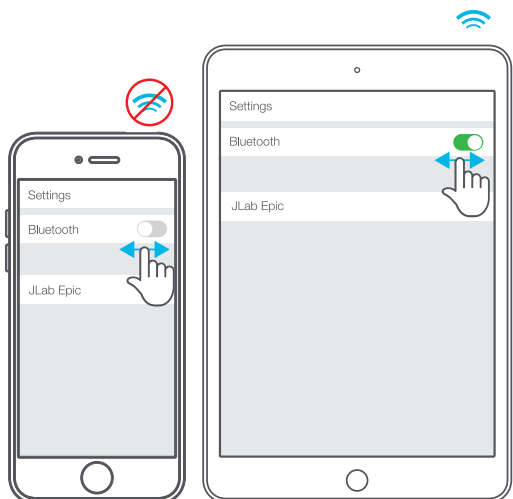
- 1 In device settings, forget the JLab Epic.
- 2 Turn Bluetooth off then back on in device settings.
- 3 Repeat **FIRST TIME SETUP** directions.

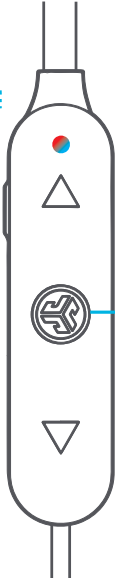


### BLUETOOTH IS CONNECTING TO AN UNWANTED DEVICE

**Note:** The JLab Epic Executive can remember up to 8 devices. It will try to auto-connect to last device used.

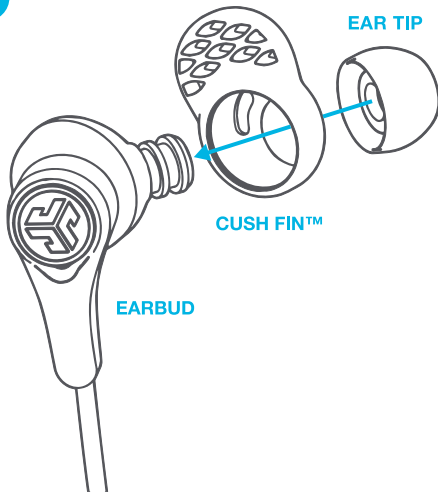
- 1 If you have more than one device that was connected to JLab Epic Executive, turn OFF Bluetooth on unwanted devices and turn ON Bluetooth on chosen device.



- 2  Press and hold button for **8 seconds**. Release.  
Lights will **blink red and blue** to indicate pairing mode.  
Select "JLab Epic" in your device settings to connect.  
Lights will **slow blink blue** when Bluetooth is paired.

## FITTING

1



2

Rotate Cush Fins™ to desired position.



3

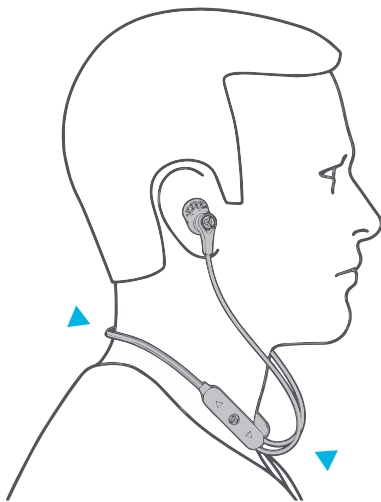
Try various ear tips and Cush Fins™ to find the best fit.



## FITTING

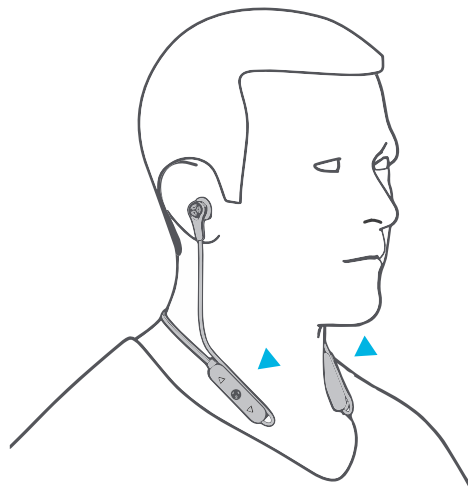
1

Place the cable behind the neck while positioning either side parallel.



2

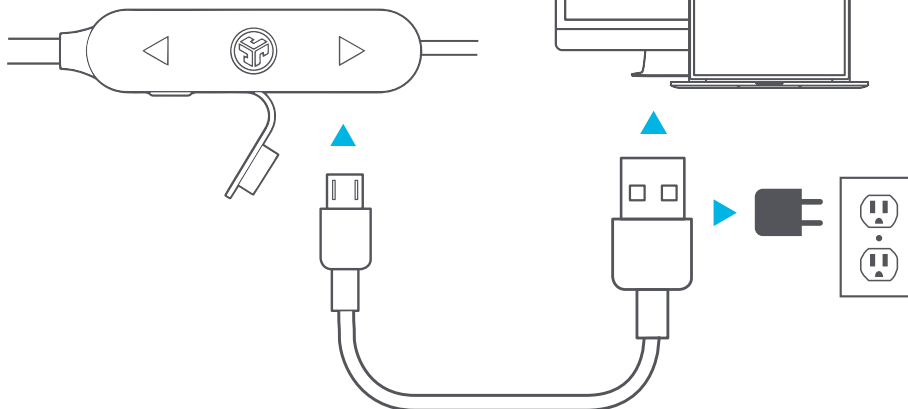
Press the cables inside channels for a customized fit.



## CHARGING

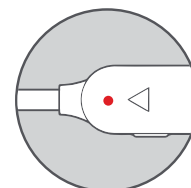
1

Plug in the USB cable into a charging input device. Locate the JLab Epic Executive door and plug in Micro USB to charge.

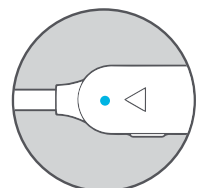


2

Light will **turn solid red** when charging and **turn blue** when fully charged.



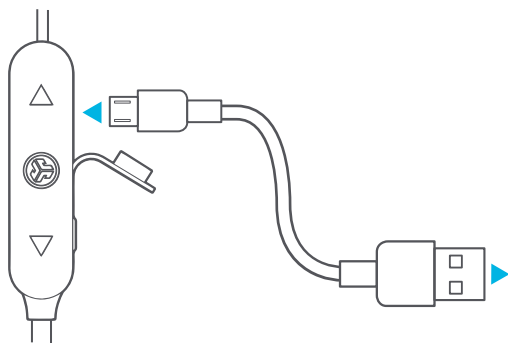
Charging



Fully Charged

## USING THE AUX ADAPTOR

- 1 Plug in USB cable into JLab Epic Executive and attach the AUX adaptor to the USB.



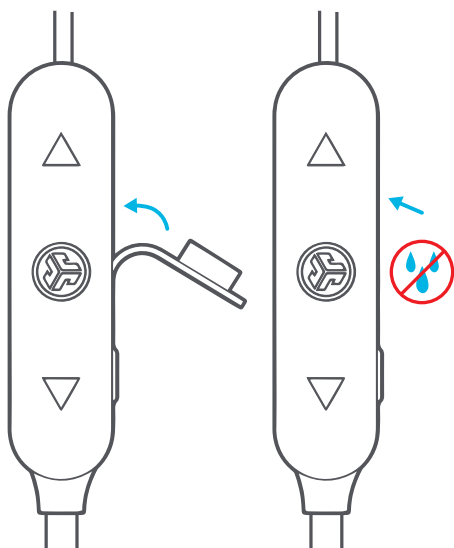
- 2 Play from an airplane or mobile device AUX.



Play wired with no power.

## WARNING

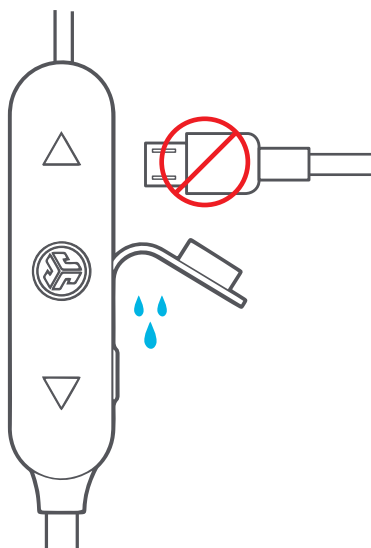
**Make sure USB door is closed and fastened. This will protect against sweat and water damage.**



**Before charging, JLab Epic Executive earbuds need to be fully dry.**

**If there is any exposure to moisture, the internal components may become damaged.**

**It is best practice to air dry before charging.**



## CAUTIONS

- Avoid getting moisture or liquids into the tip of the earbuds or charging port.
- Avoid extreme heat, cold, and humidity.
- Avoid dropping or crushing the earbuds, stressing the cable by rapid pulling or extreme force, or bending the cable at a sharp angle.
- Wax may build up in the earbud tips, lowering the sound quality. Carefully remove the wax with a cotton swab or other small tool to improve the sound quality.
- If you experience discomfort or pain, try lowering the volume or discontinuing use temporarily.
- If you experience regular discomfort while using this product, discontinue use and consult your physician.
- We recommend you treat your earbuds as you would a nice pair of sunglasses and keep them in safe location when not in use.