

SOCOPYK

Water Dispenser OPERATION MANUAL

LYCZ628-B

Please read this manual
carefully before using this
product. Keep this manual
for future reference

Safety precautions:

⚠ Warning: There should be no obstacles around the machine, and keep the ventilation unobstructed.

⚠ Warning: Never accelerate the defrosting process using machinery, equipment or other methods other than those recommended by the manufacturer.

⚠ Warning: Do not damage the cooling circuit of the machine.

⚠ Warning: Do not store explosives such as combustion sprays near machine.

⚠ Warning: Fill with drinking water only.

⚠ Warning: The refrigeration system contains high pressure refrigerant and shall not damage the refrigeration system. Maintenance of the refrigeration system should be carried out by professional person.

⚠ Warning: If the power cord is damaged, it must be replaced by the manufacturer and its maintenance professionals to avoid danger.


This appliance is used for household and similar purposes, such as:

- Shops, offices, kitchens, family hotel, farm, hotel, motel;
- Catering industry and similar non-retail applications.

CATALOGUE

Important safety tips	1
Body introduction.....	1
The Operation panel introduction.....	2
Usage tips.....	3
Use the operating instructions	5
Fault handling and technical parameters.....	6
Technical parameters and, electrical schematic diagram.....	7

Important safety tips

Your personal safety and the safety of others are the most important things. Be sure to read the safety tips and follow them, which is a safety warning symbol, 

If you do not follow these safety tips, you may suffer serious injuries.

When using household appliances, basic safety rules must be followed to reduce the chance of fire, electric shock, and damage to people or objects.

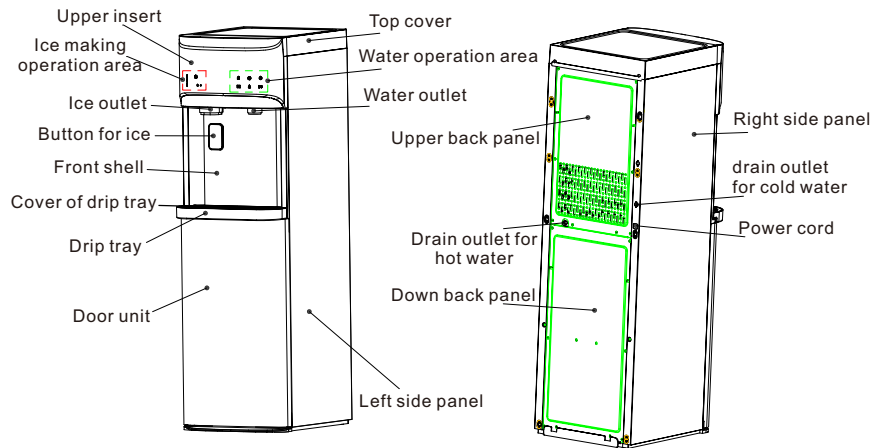
Safety tips:

- Do not use and operate the machine when the power cord is damaged.
- Use the correct power outlet and ensure that the power plug is fully plugged into the socket.
- Please do not put the power cord on the carpet or heat insulation object when using, and do not cover the power cord. The power cord should leave the walking channel and do not immerse it in water.
- Never use extended wires, which may cause overheating or fire.
- Cut off the power supply before cleaning or repair.
- When there are children next to you, there must be adult supervision to use them.
- Please do not clean the machine with a flammable liquid, which may cause a fire or explosion.
- Please do not turn over the machine.

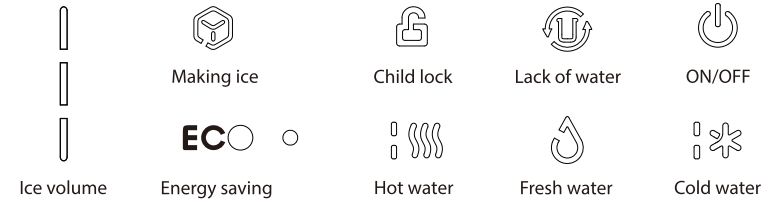
Reminder: If you move the machine to a place where the temperature has a large difference from the original ambient temperature, please stand for more than two hours before power, so that the body temperature rises to the same as the ambient temperature, and then start on.

Body introduction

1. Introduction to the body



2. Introduction of the operation panel



icon	name	state	function
	Ice making indicator light	The light flashing	Make ice
		The light is on	Ice is completed
	Ice-making button indicator light	The light is on	The ice-making function is turned on
	Energy saving induction lamp	The light is off	Induction of light intensity
	Energy saving indicator light	The light is on	Turn energy saving mode is opened
	Child lock button indicator light	The light is off	Normal state
		Light on	Hot water can be come out
	Water leakage lamp	the light is off	Normal state
		Light on	Remind the bottle is out of water
	Heating status indicator light	Below the light is on	Heating process
		The two lights are all on	The heating is completed
	Hot water button indicator light	The light is off	Normal state
		Light on	Hot water come out
	Normal temperature water indicator light	The light is off	Normal state
		Light on	Warm water come out
	Cold water button indicator light	The light is off	Normal state
		Light on	Cold water come out
	Power supply button indicator light	The light flashing	Machine standby
		The light is on	Machine work
	Make a cold water status indicator lamp	Below the light is on	Making cold water process
		The two lights are all on	Cold water completed

Usage tips

Open the package

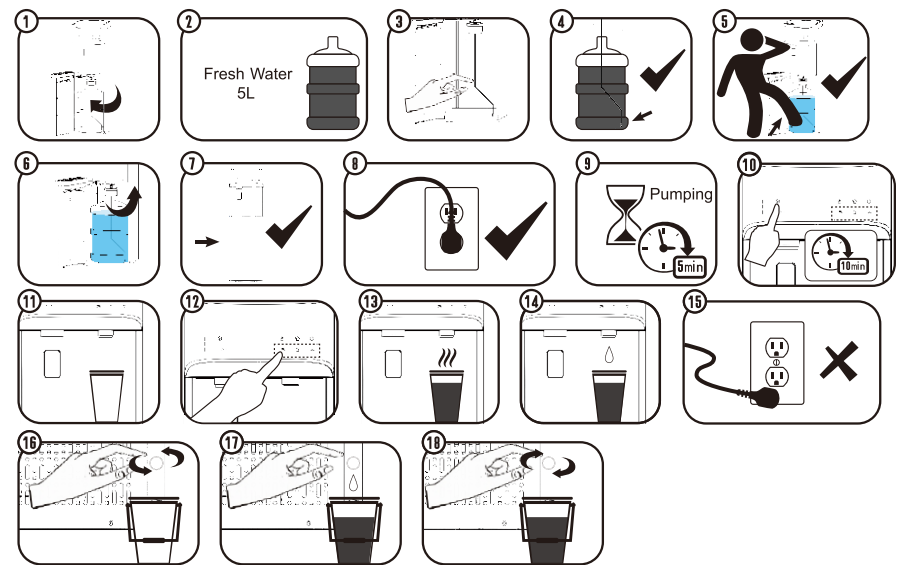
1.Remove all the internal and outer packages, open the lower door to check the accessories, if any accessories are missing, please contact the customer service department; consult the instructions for the machine functions and precautions.

2.Place the machine in a place where the sun cannot shine directly and stay away from heat and radiation. Vent well around the machine horizontally and ensure at least 16cm gap between both sides and rear.

3.The machine is placed in a suitable socket to energon

4.When the machine is first used, it is recommended to clean the internal pipeline of the machine first. The specific operation are as follows:

1. Open the door of the machine
2. Prepare a pure water bottle, and you need 5L of pure water
3. Remove the water suction pipe from the machine
4. Insert the suction pipe into the bottom of the water bottle
5. Place the water bottle into the bottom of the machine
6. Close the door
7. Make sure that the door is closed, otherwise the machine cannot pump water normally
8. Insert the machine power cord into a reliable and safe socket, and touch the power indicator light, which is always on
9. The pump starts pumping water and fills the water tank inside the machine, taking about 5 minutes
10. Touch the ice-making button indicator light for 3s, and the machine enters the self-cleaning mode for about 10 minutes
11. Place a cup under the water outlet.
12. First touch the child lock button, until the child lock button light is on, and then touch the hot water button indicator light
- 13 The hot water starts to drain into the cup until the hot water does not flow out (watch out for hot water burns)
14. Touch the warm water button until the water stops flowing; touch the cold water button until the water stops
15. Unplug the power cord
16. Prepare a bucket and open the drain cover on the back of the machine.
17. Remove the remaining water from the tank.
18. After the discharge, replace the discharge cover. The machine can be used normally.



⚠ When the machine is not in use for a long time, the water in the machine should be drained.

Machine power

⚠ The wrong use of grounding wire may be the risk of electric shock. If the power wire is damaged, please contact the after-sales service department.

- 1.For your safety, the machine must be reliably grounded.
- 2.Insert the plug into a unique socket that is reliably installed in the wall and ground. Under any circumstances, please do not cut off or remove the ground wire from the plug head.

⚠ When the machine is used for the first time, the machine is powered on and the machine makes ice for about 1 hour. If the time is less, there may be insufficient ice.

Use operational instructions

1. Power-on state:

After the machine is powered on, the buzzer will beep once, the power indicator light begins to flash, the machine enters the standby state, touch the power indicator light button, the buzzer will beep once, and the power indicator light is always on.

2. Cold water-making function:

The power indicator is always on, the cold water indicator flashes, the machine enters the cold water function mode, when the water temperature meets the set requirements, the cold water indicator is always on;

3. Hot water production function:

Touch the heating indicator button for 3s, the buzzer will beep once, the heating indicator flashes, and the machine is in the heating function mode. When the water temperature meets the set requirements, the hot water indicator is always on; if you need to turn off the heating function, touch the heating button again, the buzzer will beep once, the heating indicator is off and the heating function is off.

4. Water leakage warning:

When the water leakage indicator is on, all the functions of the machine fail, reminding the user to replace the bucket. When the bucket is replaced, the lower door body is completely closed, the empty bucket indicator is off, and all the functions of the machine return to normal;

5. Ice-making function:

Touch the ice making button, the buzzer will beep once, the ice making indicator flashes, the ice making function is on, and the cold water making function stops to wait; When the ice making light is always on, the refrigerator is full and the ice making light is suspended; if to close the ice making function, touch the ice making button again and the buzzer will beep once, the ice making light is out, and the ice making function is off.

6. Cold water outlet function:

Touch the cold water button, the buzzer will beep once, and the cold water flows out from the outlet; if you need to close the cold water outlet function, touch the cold water button again to close the cold water outlet; the default maximum time of cold water outlet is 60S.

7. Hot water outlet function:

Touch the child lock, the buzzer will beep once, the child lock indicator light is on, touch the heating button again, the heating button indicator light is on, and the hot water flows out of the outlet; if you need to close the hot water outlet function, touch the hot water button again to close the hot water outlet; the default maximum time of hot water outlet is 60S.

8. effluent function of normal temperature water:

Touch the normal temperature water button, the buzzer will beep once, and the normal temperature water flows out from the outlet; if you need to close the water outlet function of normal temperature water, touch the normal temperature water button again to close the normal temperature water outlet; the default maximum time of normal temperature water outlet is 60S.

9. Ice removal function:

After the machine makes ice for about 1 hour, the machine can take the ice for operation. If the time is insufficient, press the ice button, and the ice port will start to go out. When you leave the ice button, the ice will come out, and the mouth will not ice out.

10. Energy-saving function:

Touch the ECO button and enter the energy saving mode. The energy saving indicator is lit. After the energy saving conditions are met, the heating body stops working; touch the ECO button again to exit the energy saving state and resume the working state before energy saving.

11. Cleaning function:

Press the ice making button long for 3 seconds, flash the ice making indicator light, and turn on the cleaning function. After running continuously for 10 minutes, automatically turn off the cleaning function, and switch to the standby state.

Fault treatment

Fault phenomenon	Possible cause	Resolvent
All the indicator lights are not on	If the machine is not powered, please confirm whether the power plug is on	Replug and unplug. If not, please contact the after-sales service personnel
The ice-making process was normal, but no ice cube was produced	The eration system leaks or blockage	Contact the after-sales service personnel
Empty bucket lamp often on, ice, water indicator out	There is a lack of water in the ice-making water tank	Replace the new bucket with water and press the button to start the machine demand function
No ice, no cold water	The eration system leaks or blockage	Contact the after-sales service personnel
The power lamp flashes quickly	The ice making box is abnormal	Press the On / Off button short, or remove the power cord and wait for 5 minutes to start the water and ice making function again. If you still cannot make ice normally, please contact the after-sales service personnel
The heating indicator light is not on	The heating button is not turned on There is no water in the machine	Touch the heating light button for 3s to illuminate the heating light
No hot water	1. The child lock is not pressed 2. The solenoid valve is abnormal	First touch the child lock button, until the child lock light is on, touch the hot water button, hot water button light on, hot water out
Hot water is not hot	1. The heating button is not turned on 2. Heating is not over	1. Turn on the heating button and work with the heating indicator light 2. Wait for the heating to end

Fault phenomenon	Possible cause	Resolvent
Cold water is not cold	1. The refrigeration system leaks or blocks up 2. The refrigeration is not over	1. Contact the after-sales service personnel 2. Wait for the refrigeration to end the cooling

Technical parameters and electrical schematic diagram

MODEL	LYCZ628-B
CLIMATE TYPE	ST
VOLTAGE/FREQUENCY	115V ~ 60Hz
HEATING POWER	420W
ICE MAKING / ICE MELTING CURRENT	3A
ICE	10kg/24h
HEATING CAPACITY	≥90°C 4L/h
COOLING CAPACITY	≤10°C 2L/h
REFRIGERANT AND FILLING VOLUME	R600a/24g

Electrical schematic diagram

