

LIMITED LIFETIME WARRANTY

**Armor Edge** will repair or replace this product if, due to defective parts or workmanship, it does not perform as specified. This warranty covers only repair or replacement of the product itself. This warranty is extended to the original consumer purchaser only. In no event does this warranty extend to instances where the product is damaged through uses for which it was not intended, misuse, mishandling, removal and/or reinstallation, neglect, accident or tampering. In no event shall **Armor Edge** be liable for any indirect, incidental or consequential damages, or lost profits arising out of or related to this product, or the performance or breach thereof, even if **Armor Edge** has been advised of the possibility thereof. **Armor Edge** liability to customer, if any, shall in no event exceed the total of the purchase price. Some states do not permit the exclusion or limitation of incidental or consequential damages, therefore, sections of the above limitation or exclusion may not apply to you. This warranty is in lieu of any other warranty, expressed or implied, including, but not limited to, any warranty of merchantability or fitness for any particular purpose. Any representations or promises inconsistent, or in addition to this warranty are unauthorized and shall not be binding upon **Armor Edge**.

Please contact **Armor Edge** by phone at **888-753-6957** or email [info@armoredge.com](mailto:info@armoredge.com) for return instructions.

LIFETIME WARRANTY

📞 888-753-6957 ✉ [info@armoredge.com](mailto:info@armoredge.com)  
[www.armoredge.com](http://www.armoredge.com)

SKU 12000, 12001, 12002

REV 042018

ARMOR  EDGE

APPLICATION  
INSTRUCTIONS



Installation video:  
[www.armoredge.com/installation](http://www.armoredge.com/installation)

GETTING STARTED

- Remove your phone from its case, if applicable.
- Place the phone face up in the tray. (Figure 1)

PREPARE YOUR PHONE

- Use the screen cleaner to thoroughly clean your phone's screen. (Figure 2)
- Wipe with the microfiber cloth.
- Peel off the dust removal sticker and place over the entire screen. Pull up to remove remaining dust.

APPLYING THE PROTECTIVE GLASS

- Remove clear plastic film from the glass.
- Fully close the tray onto your phone. (Figure 3)
- Press down through the opening on the applicator and swipe up & down to apply glass onto your phone. (Figure 4)
- Wait 5 seconds and open the applicator while still pressing the glass against the phone. (Figure 5)
- Use the micro fiber cloth to remove any remaining bubbles and remove your phone from the tray. (Figure 6)
- Any remaining bubbles will disappear within 24 hours.

Figure 1

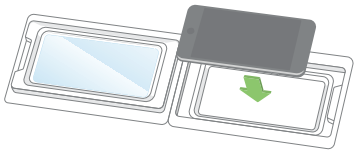


Figure 2

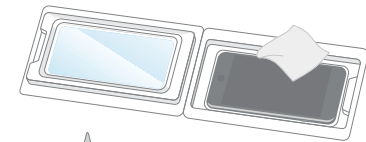


Figure 3

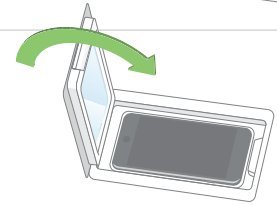


Figure 4

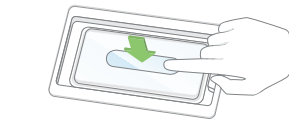


Figure 5

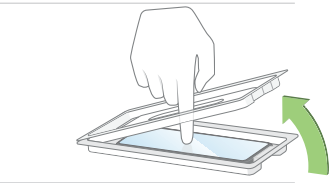


Figure 6



LIMITED LIFETIME WARRANTY

**Armor Edge** will repair or replace this product if, due to defective parts or workmanship, it does not perform as specified. This warranty covers only repair or replacement of the product itself. This warranty is extended to the original consumer purchaser only. In no event does this warranty extend to instances where the product is damaged through uses for which it was not intended, misuse, mishandling, removal and/or reinstallation, neglect, accident or tampering. In no event shall **Armor Edge** be liable for any indirect, incidental or consequential damages, or lost profits arising out of or related to this product, or the performance or breach thereof, even if **Armor Edge** has been advised of the possibility thereof. **Armor Edge** liability to customer, if any, shall in no event exceed the total of the purchase price. Some states do not permit the exclusion or limitation of incidental or consequential damages, therefore, sections of the above limitation or exclusion may not apply to you. This warranty is in lieu of any other warranty, expressed or implied, including, but not limited to, any warranty of merchantability or fitness for any particular purpose. Any representations or promises inconsistent, or in addition to this warranty are unauthorized and shall not be binding upon **Armor Edge**.

Please contact **Armor Edge** by phone at **888-753-6957** or email **info@armoredge.com** for return instructions.

LIFETIME WARRANTY

📞 888-753-6957 ✉ info@armoredge.com  
www.armoredge.com

SKU 12004, 12005, 12006, 12007

REV 042018



APPLICATION INSTRUCTIONS



Installation video:  
www.armoredge.com/installation

GETTING STARTED

- Remove your phone from its case, if applicable.
- Place the phone face up in the tray. (Figure 1)

PREPARE YOUR PHONE

- Use the screen cleaner to thoroughly clean your phone's screen. (Figure 2)
- Wipe with the microfiber cloth.
- Peel off the dust removal sticker and place over the entire screen. Pull up to remove remaining dust.

APPLYING THE PROTECTIVE GLASS

- Remove clear plastic film from the glass.
- Fully close the tray onto your phone. (Figure 3)
- Press down through the opening on the applicator to apply glass onto your phone. (Figure 4)
- Wait 5 seconds and open the applicator while still pressing the glass against the phone. (Figure 5)
- Use the micro fiber cloth to remove any remaining bubbles and remove your phone from the tray. (Figure 6)
- Any remaining bubbles will disappear within 24 hours.

Figure 1

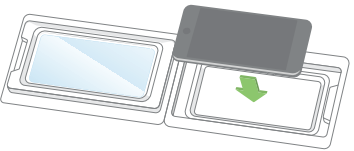


Figure 2

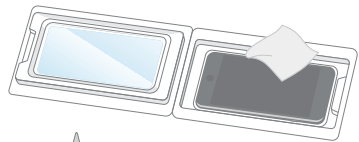


Figure 3

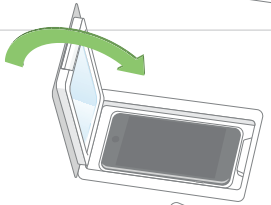


Figure 4

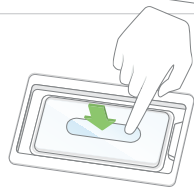


Figure 5

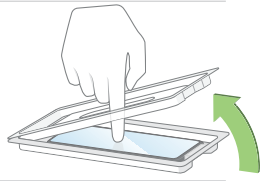


Figure 6

