



JLAB AUDIO
EPIC SPORT 2
EARBUDS

We love that you are rocking JLab Audio!
We take pride in our products and fully stand behind them.



YOUR SATISFACTION IS GUARANTEED

You may exchange or return merchandise within 30 days of the purchase date.
Learn more at jlabaudio.com/guarantee



YOUR WARRANTY

You may register your product at jlabaudio.com/register. All warranty claims are subject to JLab Audio authorization and at our sole discretion. Retain your proof of purchase to ensure warranty coverage.

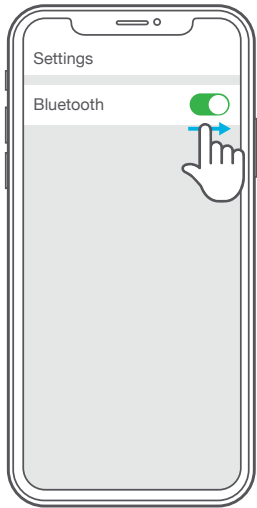


CONTACT US

Reach out to us at support@jlabaudio.com or visit jlabaudio.com/contact

FIRST TIME SETUP: BLUETOOTH PAIRING

- 1 Turn on the Bluetooth in your device settings.



- 2

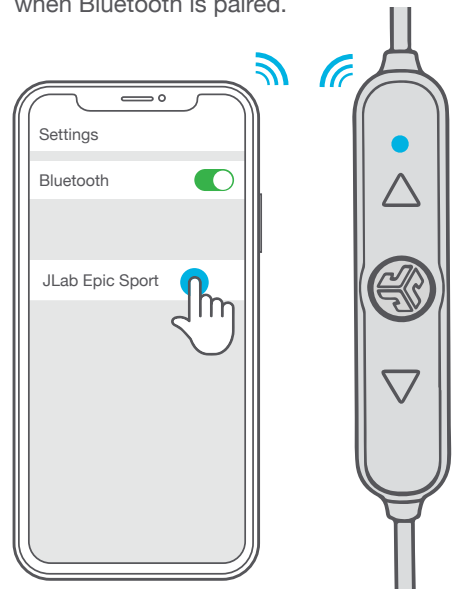


Press and hold button for **8 seconds**.
Release.
Light will **blink red and blue** to indicate pairing mode.

- 3

- Select "JLab Epic Sport" in your device settings to connect.

Light will **slow blink blue** when Bluetooth is paired.



RECURRING USE

Once JLab Epic Sport 2 has initially paired to your device, the earbuds will auto-connect to your Bluetooth device when powered back ON. (Follow **BUTTON FUNCTIONS** instructions)

CHARGING



Open USB door and connect the cable to a computer or 5v (or less) power source to charge.



BUTTON FUNCTIONS

VOLUME UP:

Quick press

TRACK FORWARD:

Press & hold 2 seconds

POWER ON:

Press & hold 3 seconds

POWER OFF:

Press & hold 5 seconds

PLAY / PAUSE / ANSWER / HANG UP:

Quick press

BLUETOOTH PAIR:

Press & hold 8 seconds
(see First Time Setup)

ACTIVATE GOOGLE / SIRI:

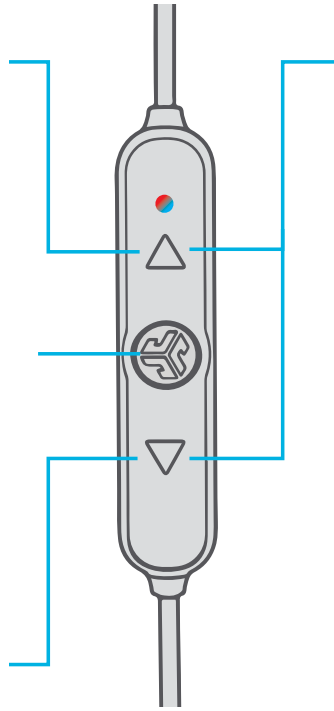
Click twice

VOLUME DOWN:

Quick press

TRACK BACKWARD:

Press & hold 2 seconds



EQUALIZER MODES

Quick press both buttons for different EQ settings

(Epic Sport 2 will cycle 3 EQ settings)



JLab SIGNATURE (One Beep)

JLab C3™ signature sound
with amplified bass and vocals



BALANCED (Two Beeps)

Even sound with no
additional enhancements



BASS BOOST (Three Beeps)

Amplified bass
and sub-bass

VOICE PROMPTS

“HELLO” = Power is ON.

“BATTERY FULL” = 100-75%

“BATTERY MEDIUM” = 75-25%

“LOW BATTERY” = Less than 25%

“READY TO PAIR”

JLab Epic Sport 2 earbuds are ready
to connect to your Bluetooth device.

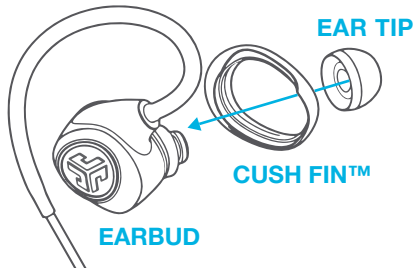
“YOU’RE CONNECTED”

JLab Epic Sport 2 is connected to your
Bluetooth device and ready for use.

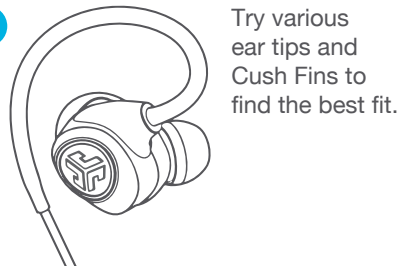
“GOODBYE” = Power turning OFF.

FITTING

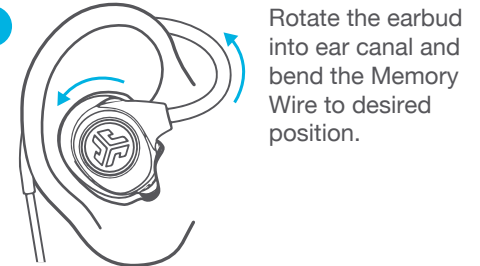
1



2



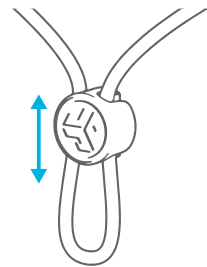
3



CABLE CLIP USE

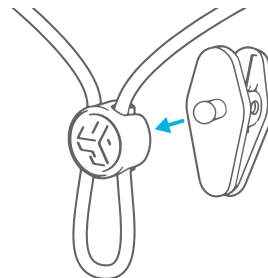
1

Attach optional cable holder to tighten
or loosen the cable during use.



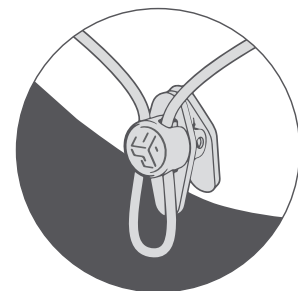
2

Insert the optional cable clip
to the back of the cable holder.



3

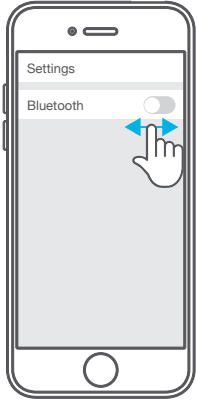
Open the cable clip
and attach to apparel.



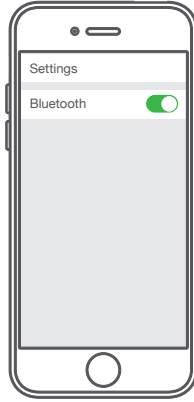
CONNECTION TROUBLESHOOTING

I DO NOT SEE JLAB EPIC SPORT 2 IN MY DEVICE

- 1 Turn Bluetooth off and then back on in device settings.

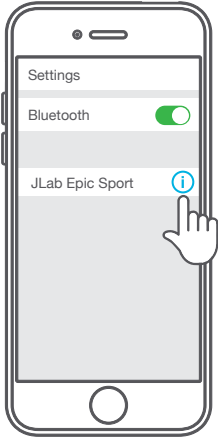


- 2 If you still do not see JLab Epic Sport, repeat **FIRST TIME SETUP: BLUETOOTH PAIRING** directions.

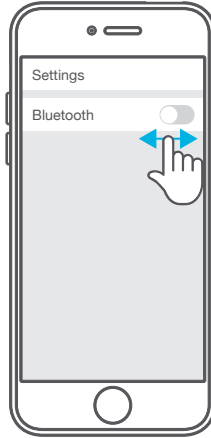


JLAB EPIC SPORT 2 DOES NOT RECONNECT TO MY DEVICE AFTER POWERING ON

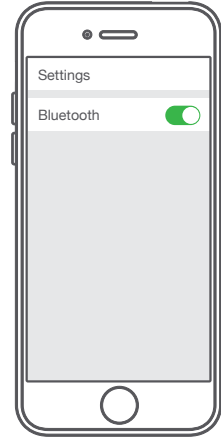
- 1 In device settings, forget the JLab Epic Sport.



- 2 Turn Bluetooth off then back on in device settings.



- 3 Repeat **FIRST TIME SETUP: BLUETOOTH PAIRING** directions.

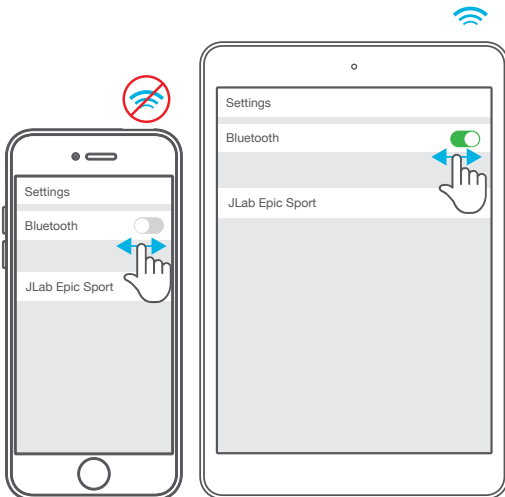


CONNECTION TROUBLESHOOTING (CONTINUED)

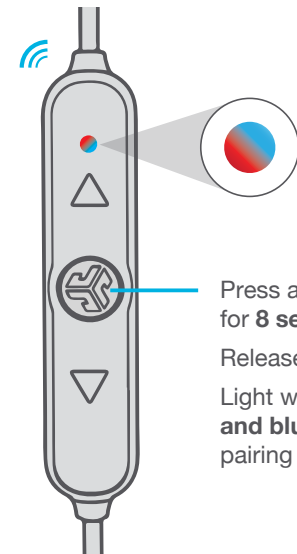
BLUETOOTH IS CONNECTING TO AN UNWANTED DEVICE

Note: The JLab Epic Sport 2 can remember up to 8 devices. It will try to auto-connect to last device used.

- 1 If you have more than one device that was connected to JLab Epic Sport 2, turn OFF Bluetooth on unwanted devices and turn ON Bluetooth on chosen device.



- 2



Press and hold button for **8 seconds**. Release. Light will **blink red and blue** to indicate pairing mode.

ENHANCE YOUR EXPERIENCE WITH THE JLAB AUDIO APP:



- Shop your favorite products
- Get notified when we have deals
- Burn-in your audio equipment



JLab Audio + Burn-in Tool

CAUTIONS

- Avoid getting moisture or liquids into the tip of the earbuds or charging port.
- Avoid extreme heat, cold, and humidity.
- Avoid dropping or crushing the earbuds, stressing the cable by rapid pulling or extreme force, or bending the cable at a sharp angle.
- Wax may build up in the earbud tips, lowering the sound quality. Carefully remove the wax with a cotton swab or other small tool to improve the sound quality.
- If you experience discomfort or pain, try lowering the volume or discontinuing use temporarily.
- If you experience regular discomfort while using this product, discontinue use and consult your physician.
- We recommend you treat your earbuds as you would a nice pair of sunglasses and keep them in safe location when not in use.