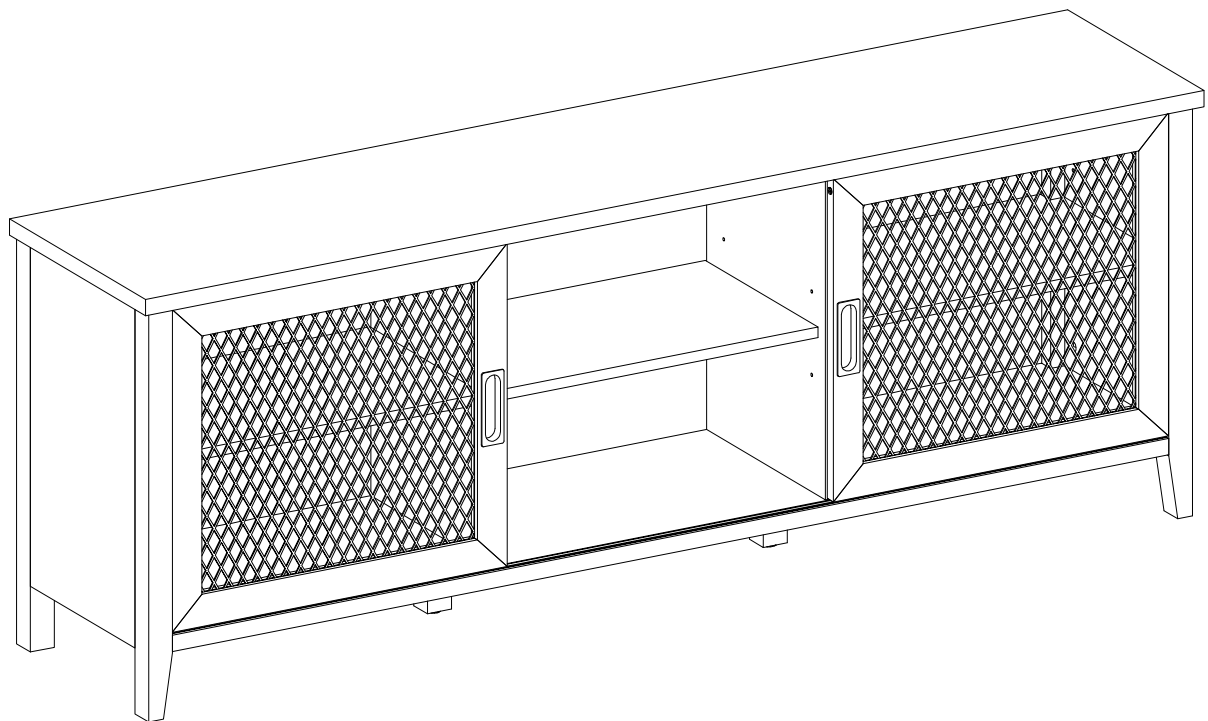


Item # : W70ARSMD

Assembly Instructions



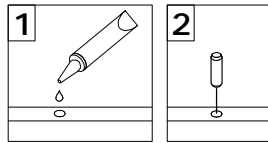
Walker Edison®

Please visit our website for the most current instructions, assembly tips, report damage, or request parts. www.walkeredison.com

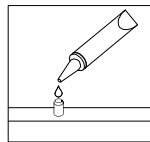
Revised 15/07/2019

General Assembly Guidelines

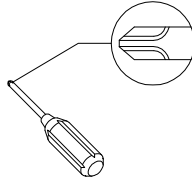
- I. Ensure that all parts and hardware are available before beginning assembly.
- II. Follow each step carefully to ensure the proper assembly of this product.
- III. Two people are recommended for ease in the assembly of this product.
- IV. The three main types of hardware used to assemble this product are : wood dowels , screws and bolts.
- V. The provided glue is to secure wood dowels in place . When first inserting dowels , locate the appropriate hole for the dowel , place a small amount of glue in the hole and insert the dowel . Wipe away excess glue immediately.



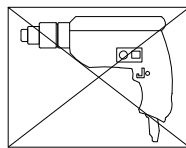
In future assembly steps when dowels are necessary to attach assembly parts together , place a small amount of glue on the end of the dowel before attaching parts together . Wipe away excess glue immediately.



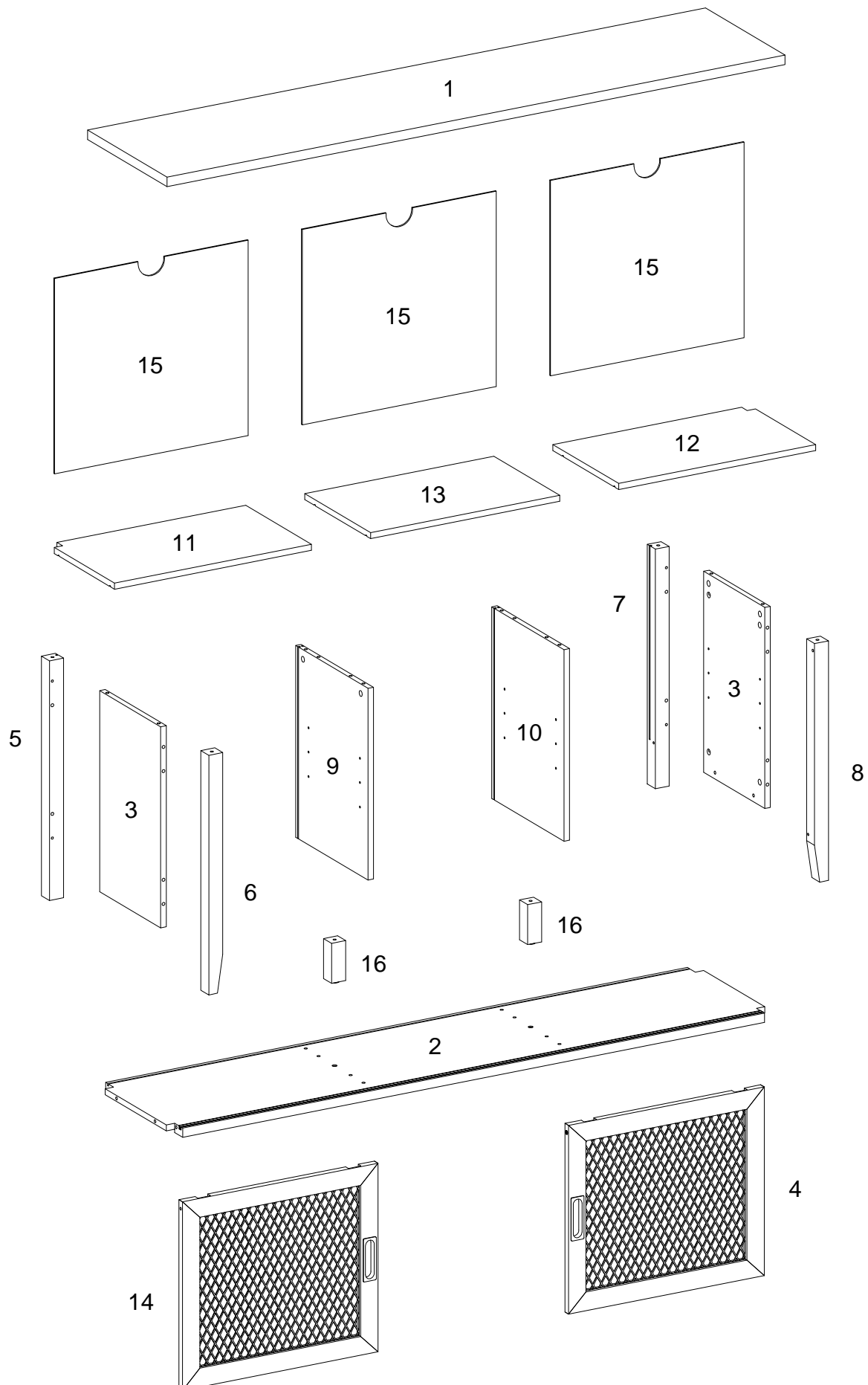
- VI. A Phillips head screwdriver is required for the assembly of this product .










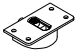



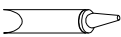
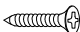
- VII. Power tools should not be used to assemble this product .

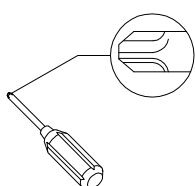


Parts List



Hardware List

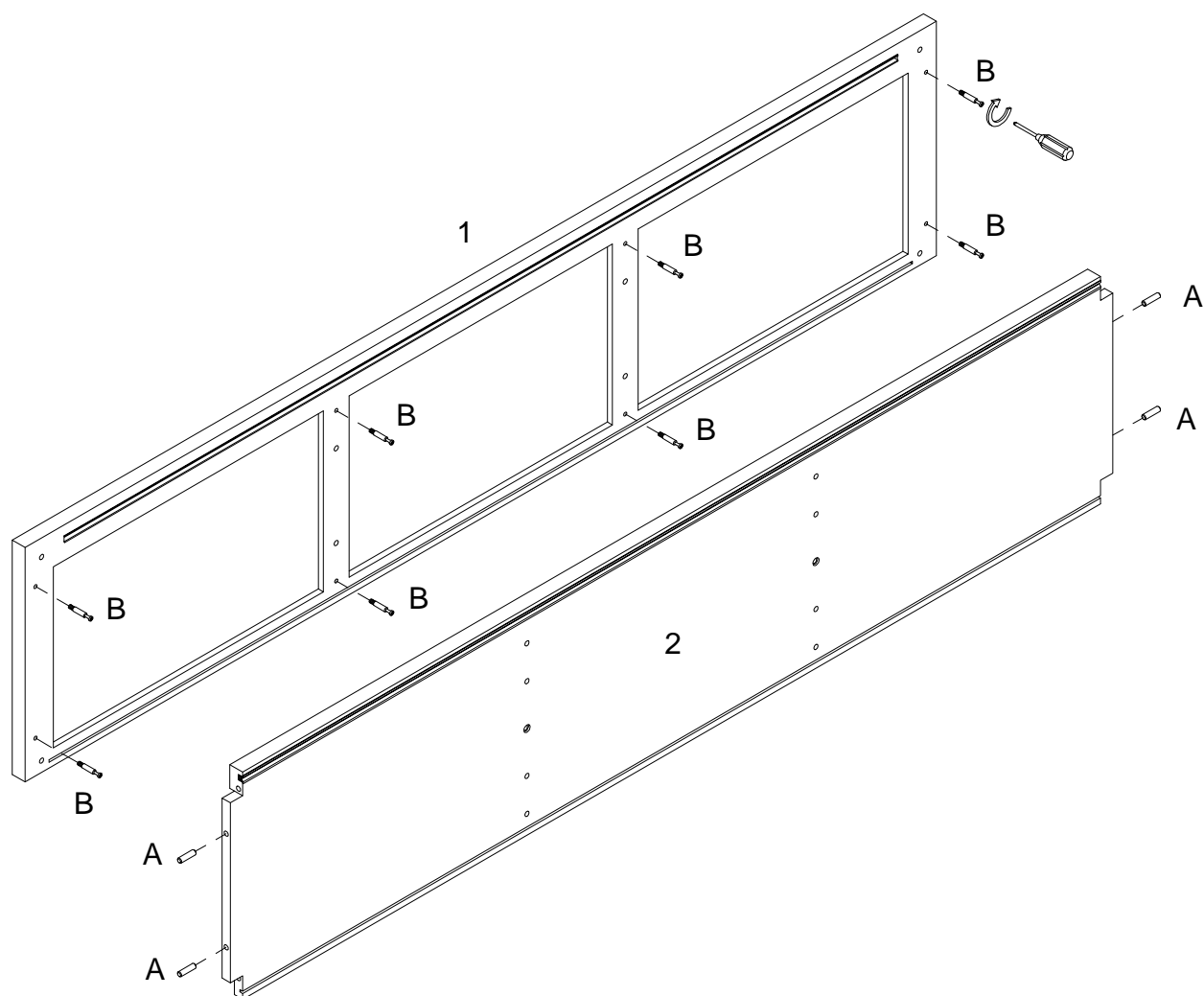
A		Ø8x30mm	Wooden dowel	24 pcs
B		Ø6x35mm	Cam bolt	20 pcs
C		Ø15x11mm	Cam lock	20 pcs
D		Ø30mm	Sticker	20 pcs
E		Ø8x5x16mm	Shelf support pin	12 pcs
F		Ø6x50mm	Bolt	6 pcs
G		M 4	Hex Key	1 pc
H			Pulley	4 pcs
J			Plastic wedge	12 pcs
K			Pulley	4 pcs
L		Ø3x17mm	Screw	12 pcs
M			Glue tube	1 pc
P		Ø3x12mm	Screw	32 pcs



Philips head screwdriver required for assembly
(not included)

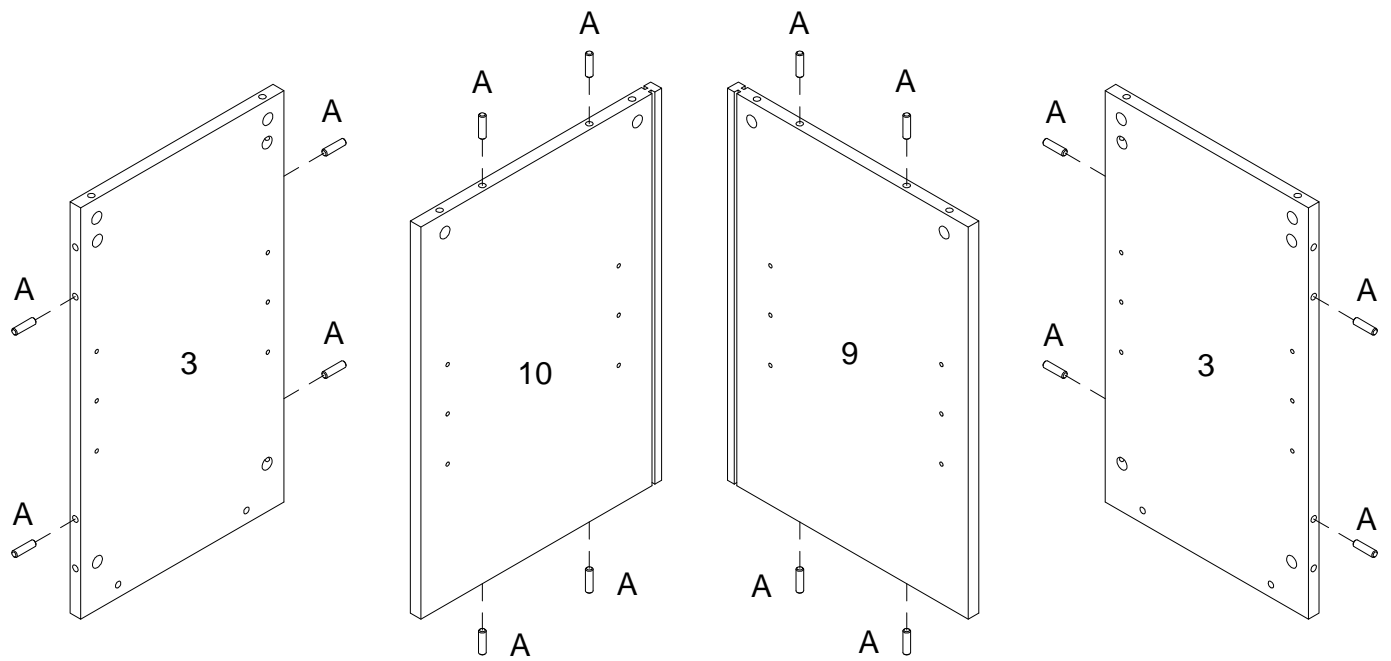
*The hardware quantities listed above are required for proper assembly.
Some extra hardware may also have been included.*

Step 1



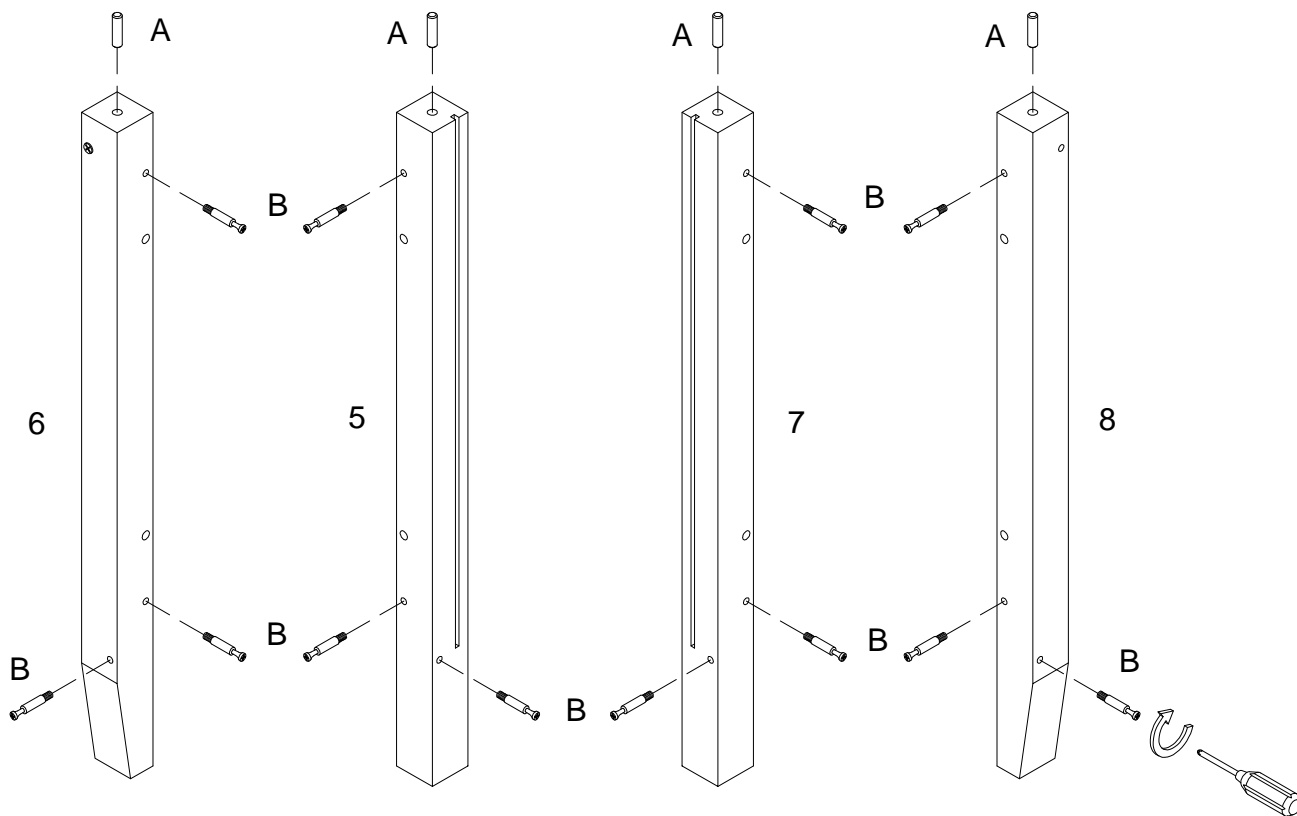
Insert wooden dowel (A) into part (2), using cam bolt (B) into part (1) with Philips head screwdriver as per diagram.

Step 2



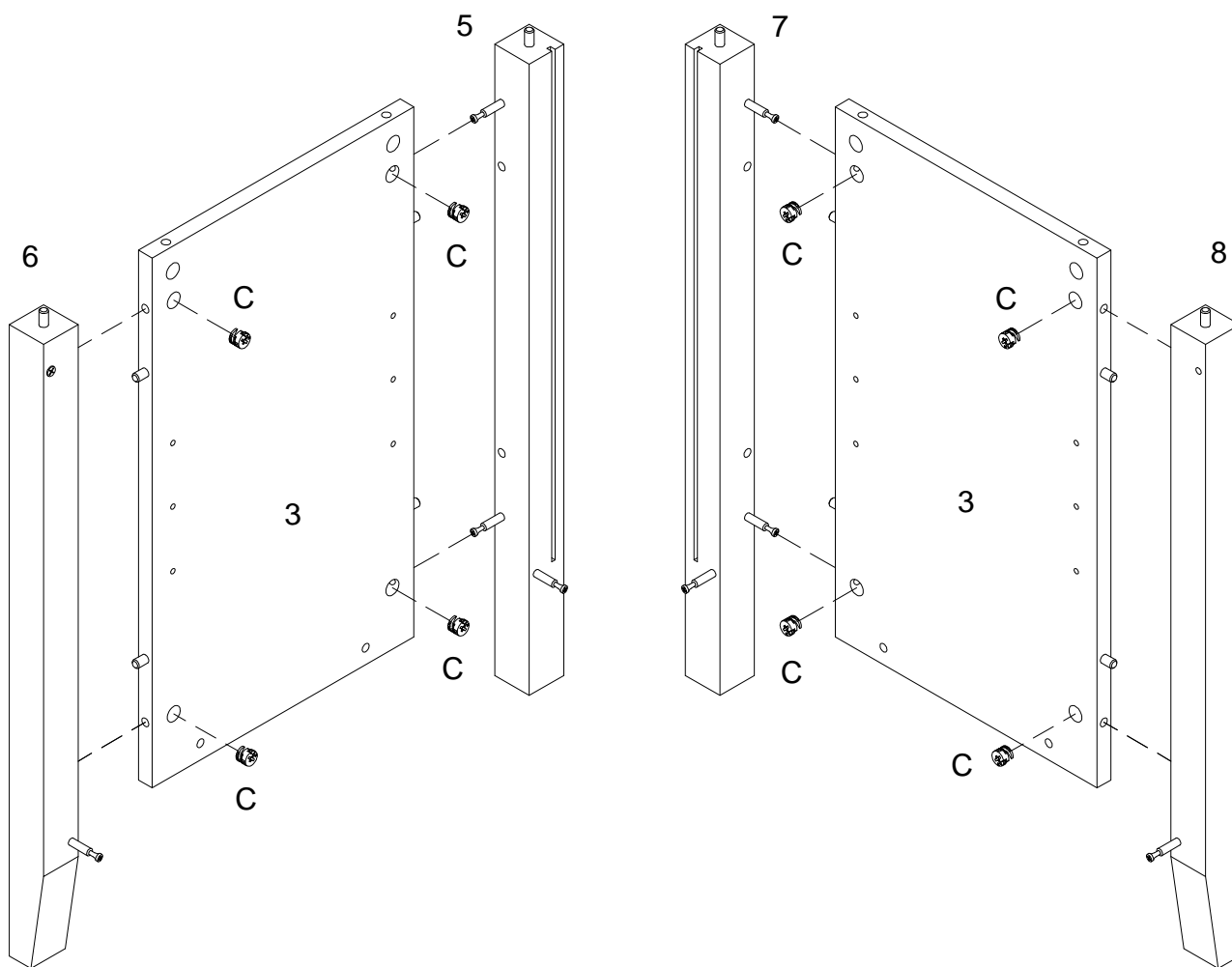
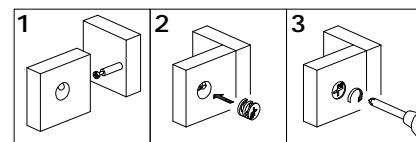
Insert wooden dowel (A) into parts (3,9,10) as per diagram.

Step 3



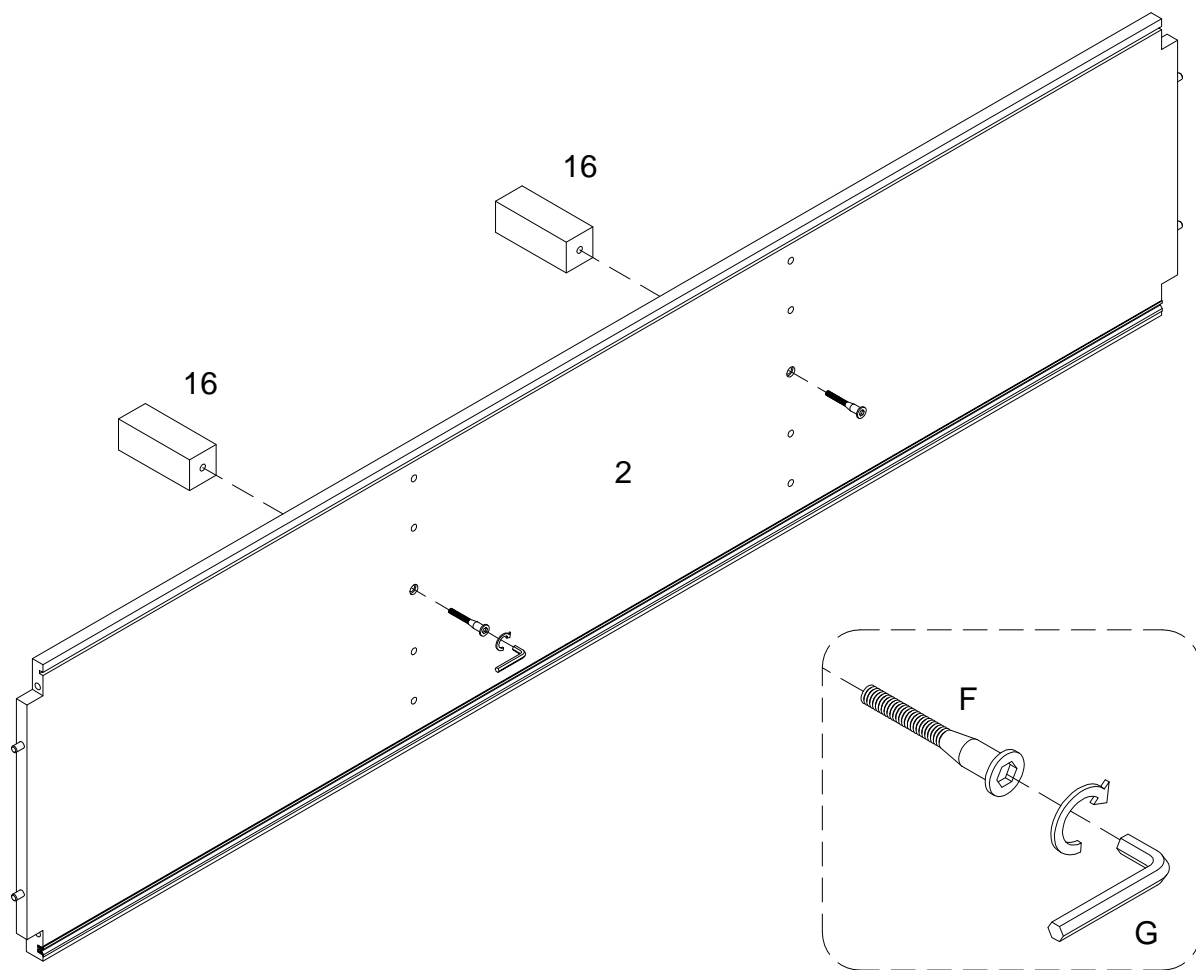
Insert wooden dowel (A) into parts (5,6,7,8), using cam bolt (B) secure parts (5,6,7,8) with Philips head screwdriver as per diagram.

Step 4



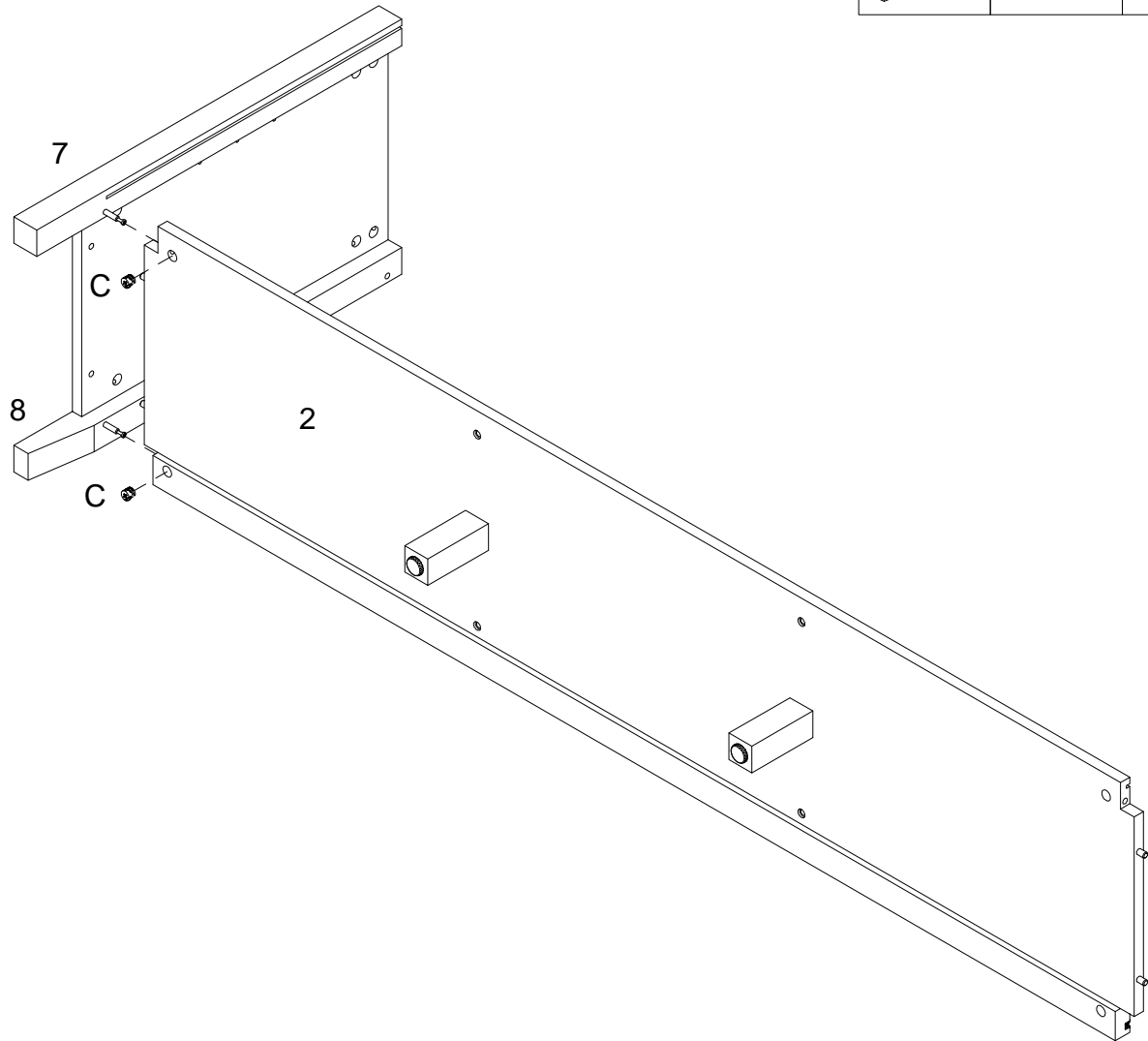
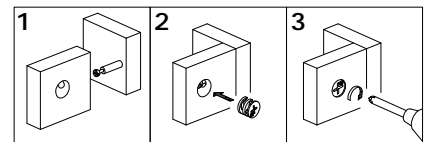
Using cam lock secure parts (5,6,7,8) into part (3) with Philips head screwdriver as per diagram.

Step 5



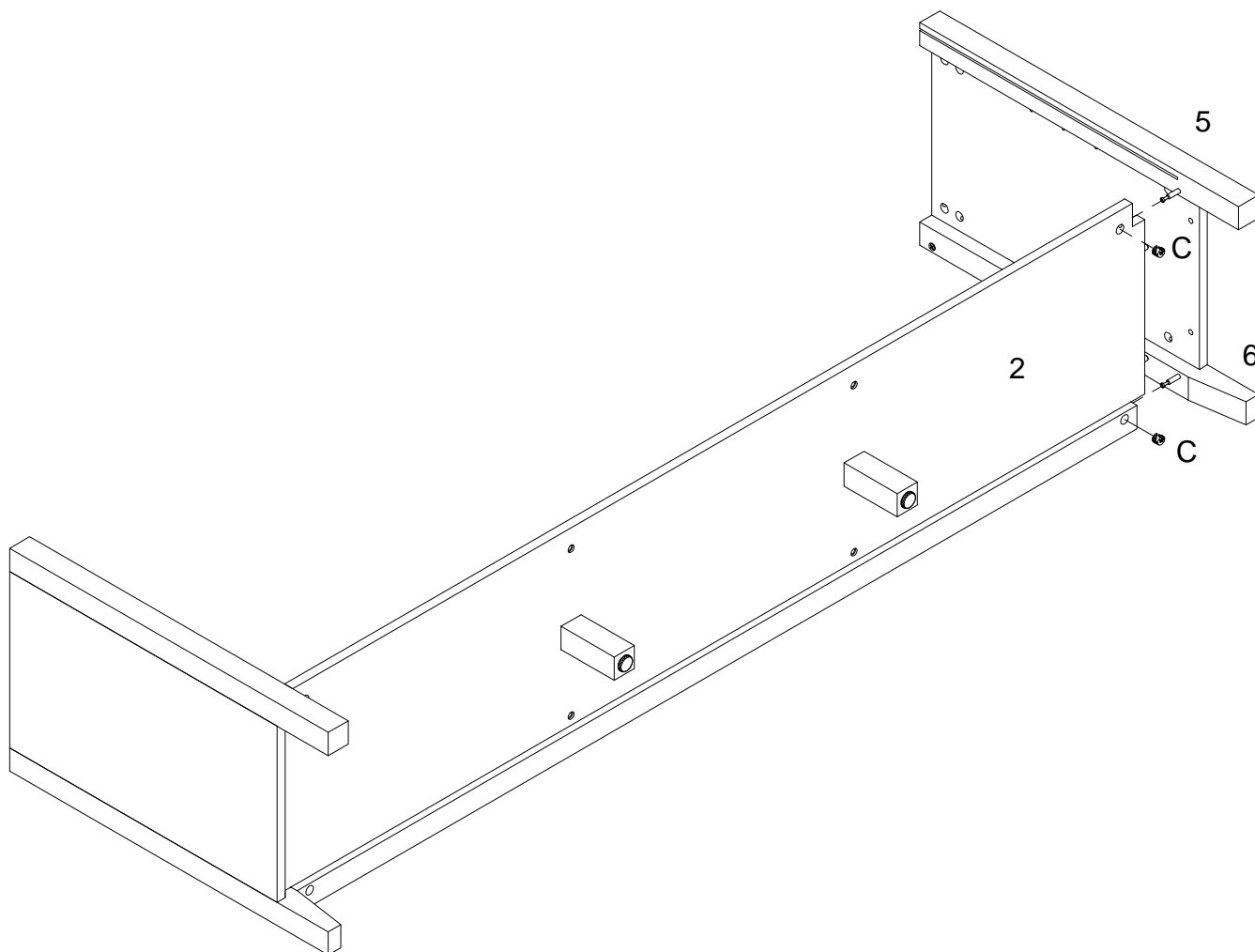
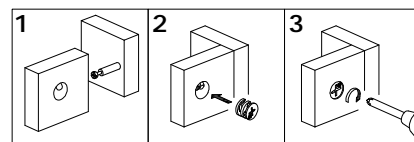
Using bolt (F) attach part (2) into part (16) with hex key (G) as per diagram.

Step 6



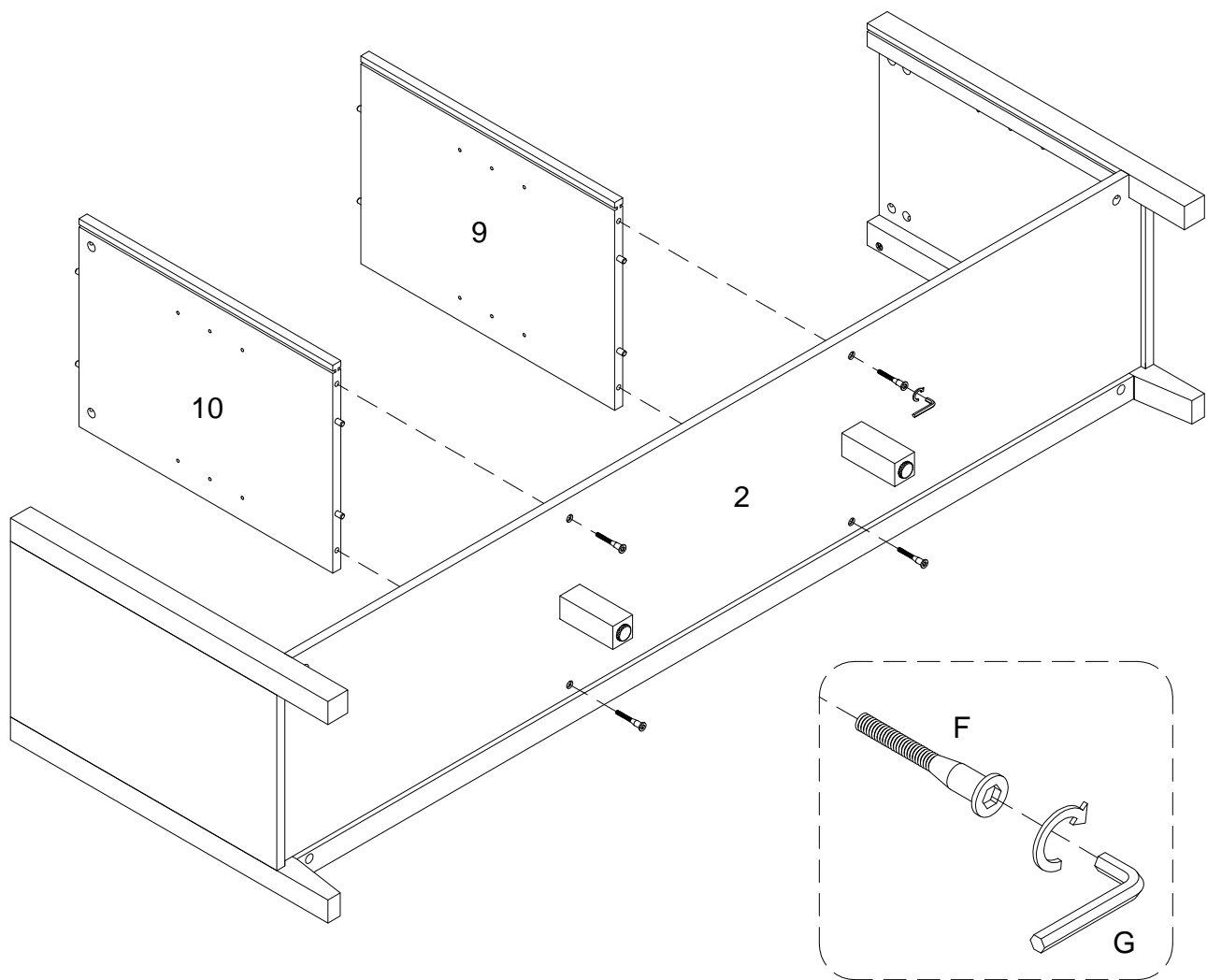
Using cam lock (C) secure part (2) into parts (7,8) with Philips head screwdriver as per diagram.

Step 7



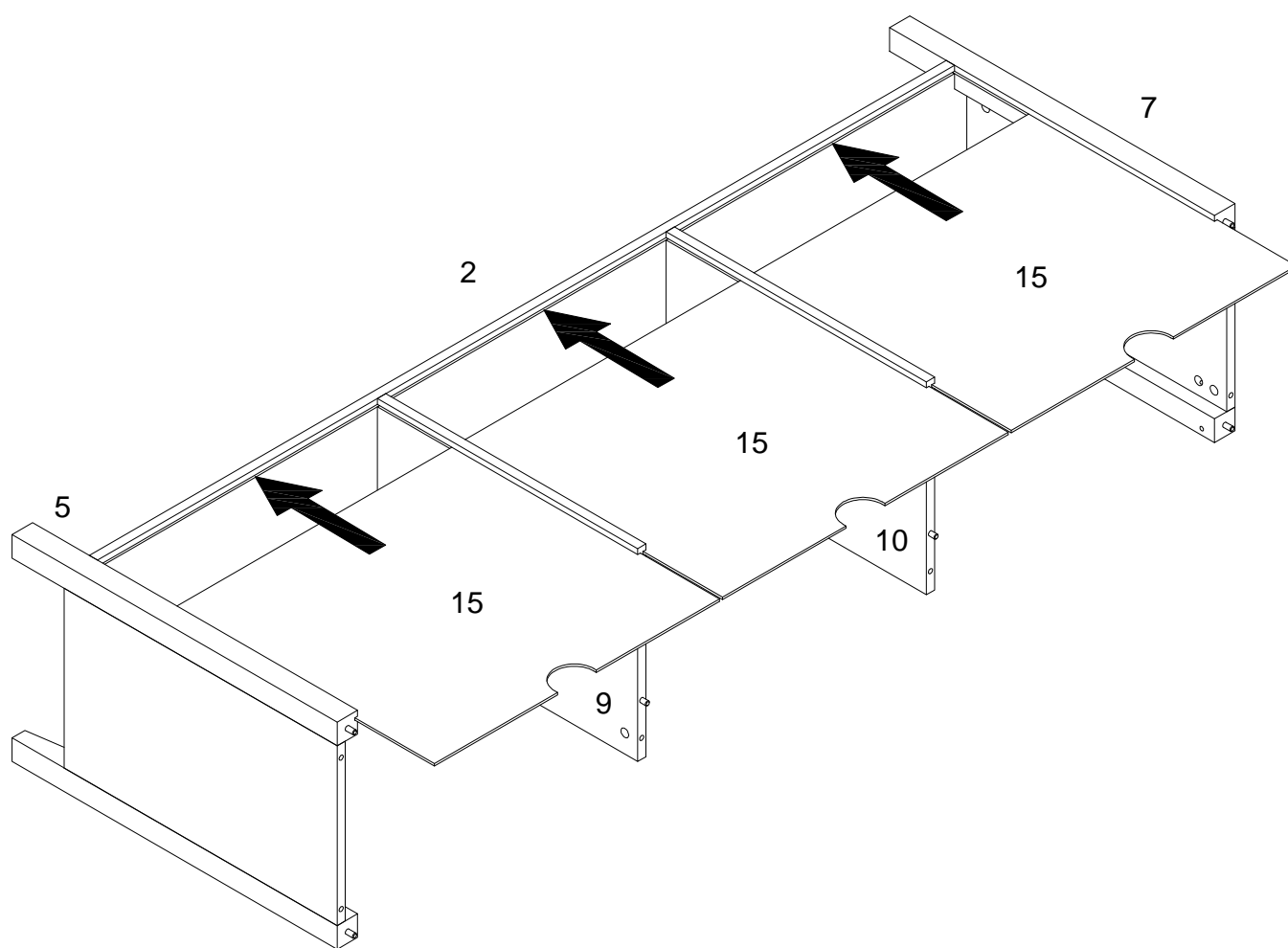
Using cam lock (C) secure part (2) into parts (5,6) with Philips head screwdriver as per diagram.

Step 8



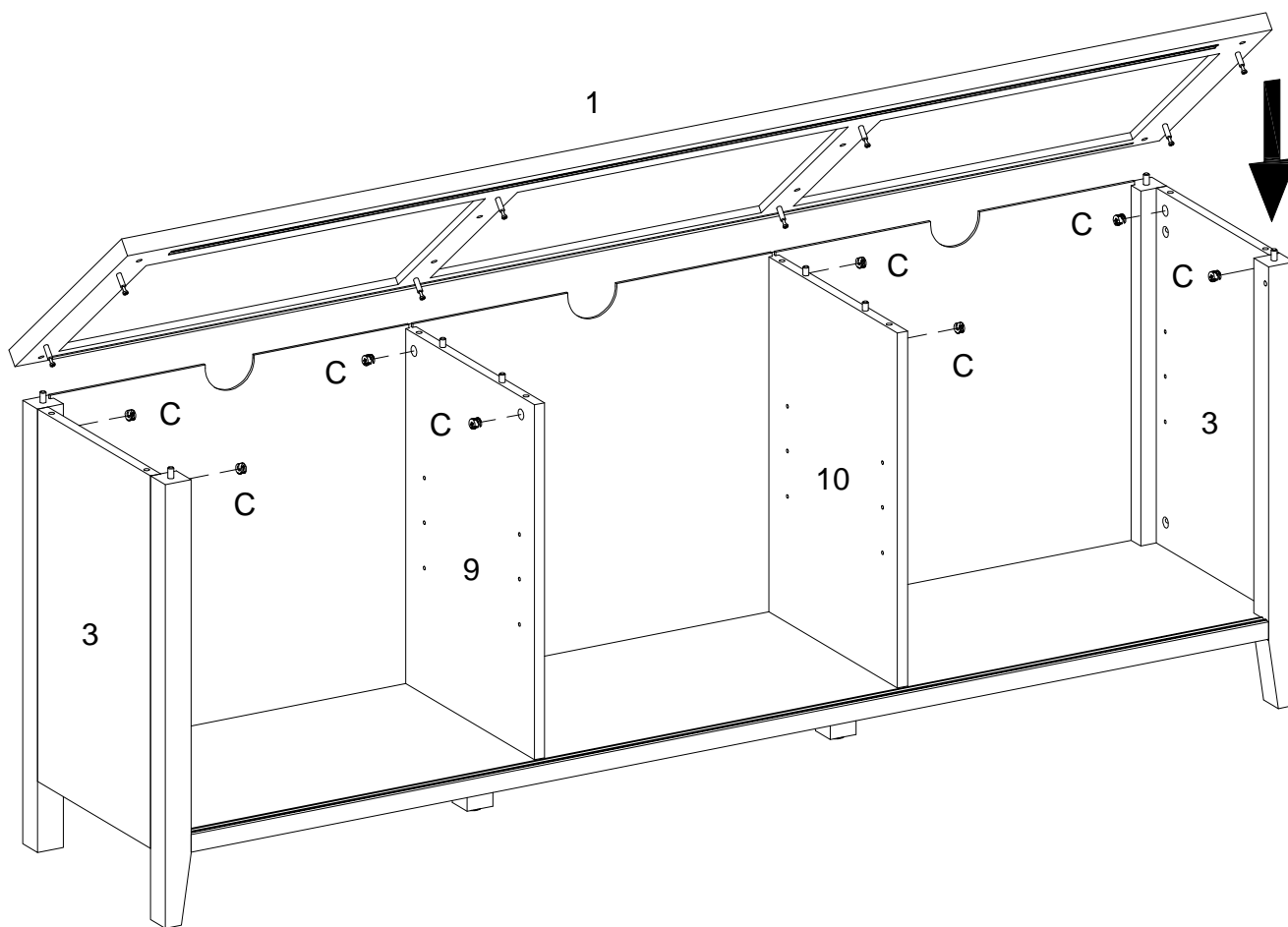
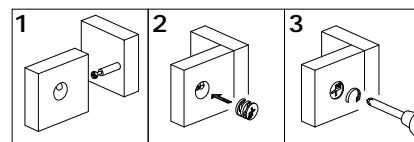
Using bolt (F) secure part (2) into parts (9,10) with hex key (G) as per diagram.

Step 9



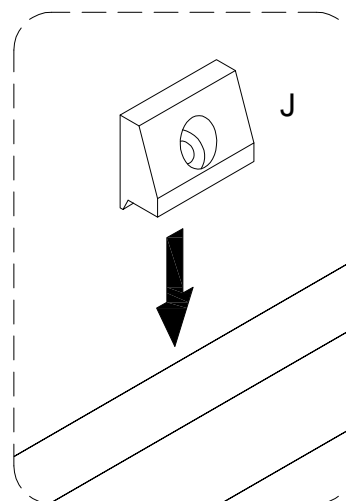
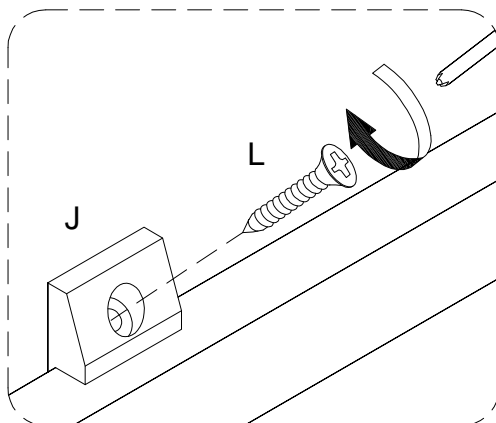
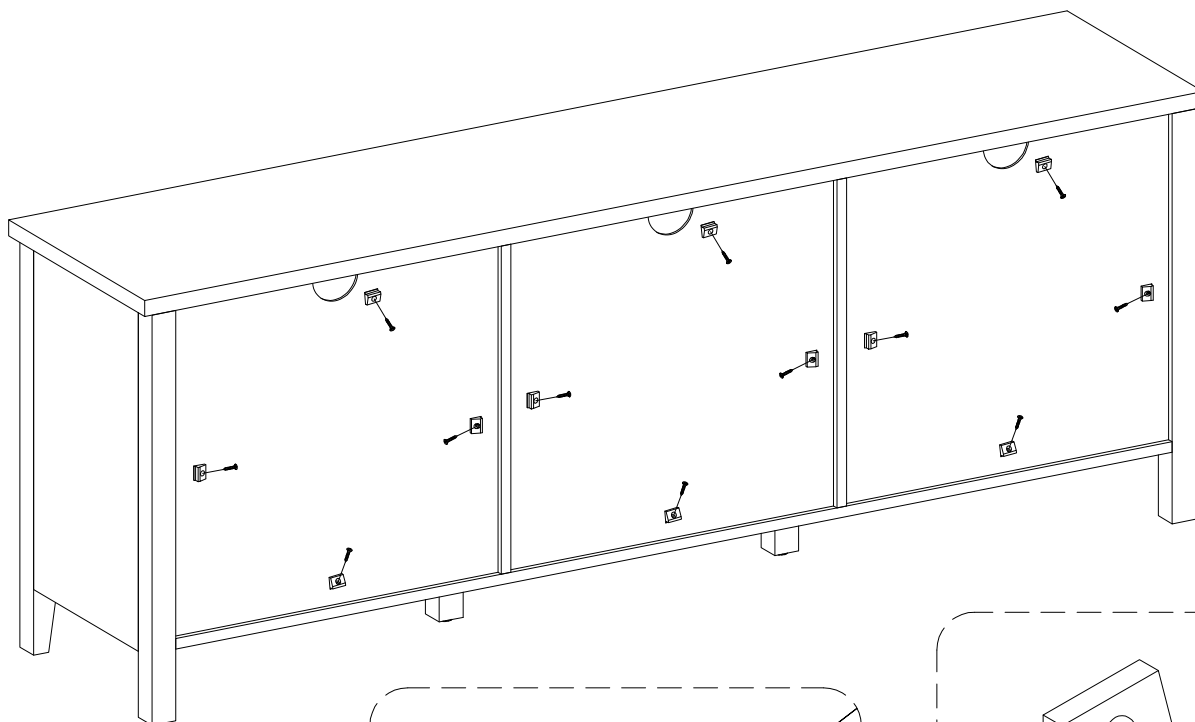
Put part (15) into parts (2,5,7) as per diagram.

Step 10



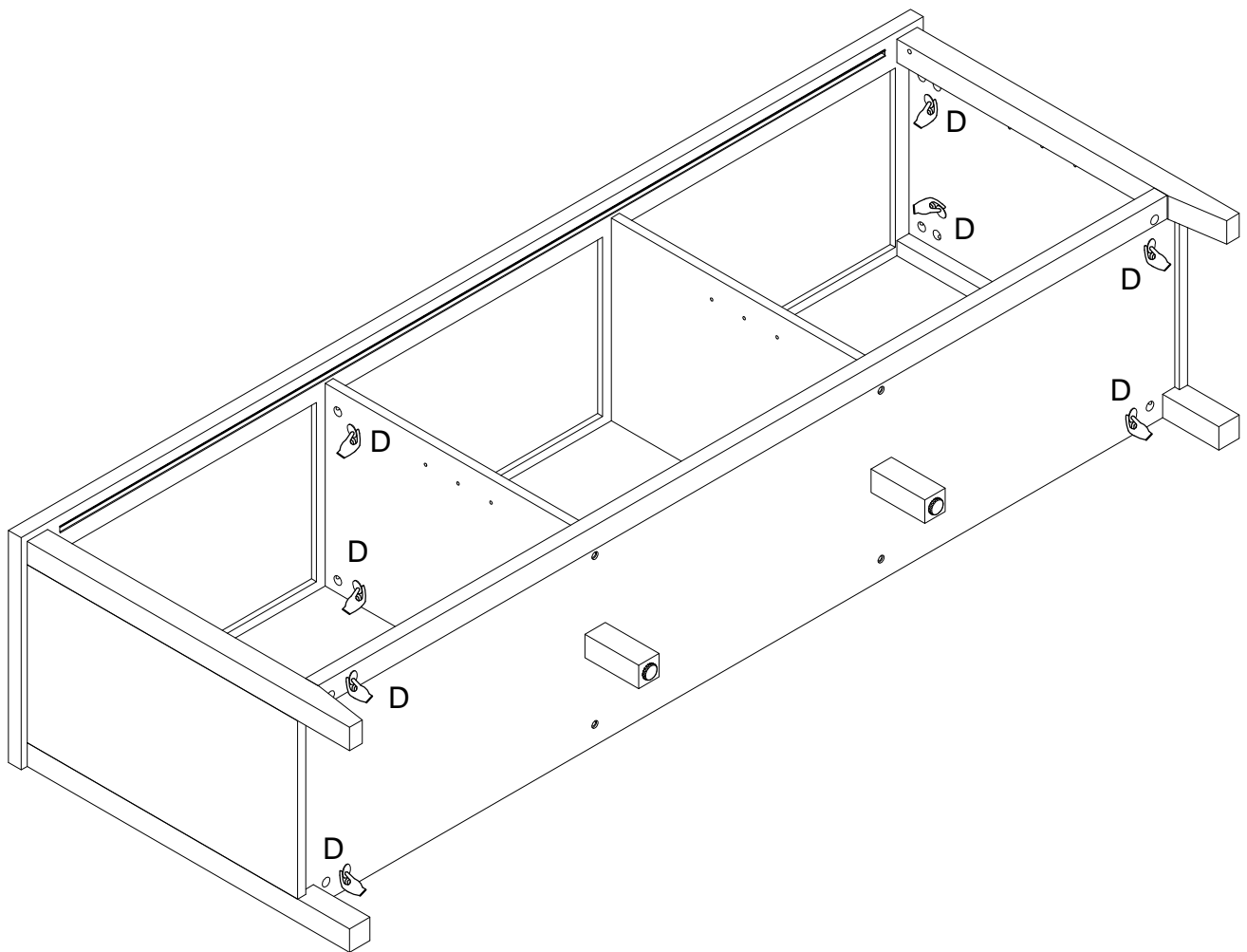
Using cam lock (C) secure part (1) into parts (3,9,10) with Philips head screwdriver as per diagram.

Step 11



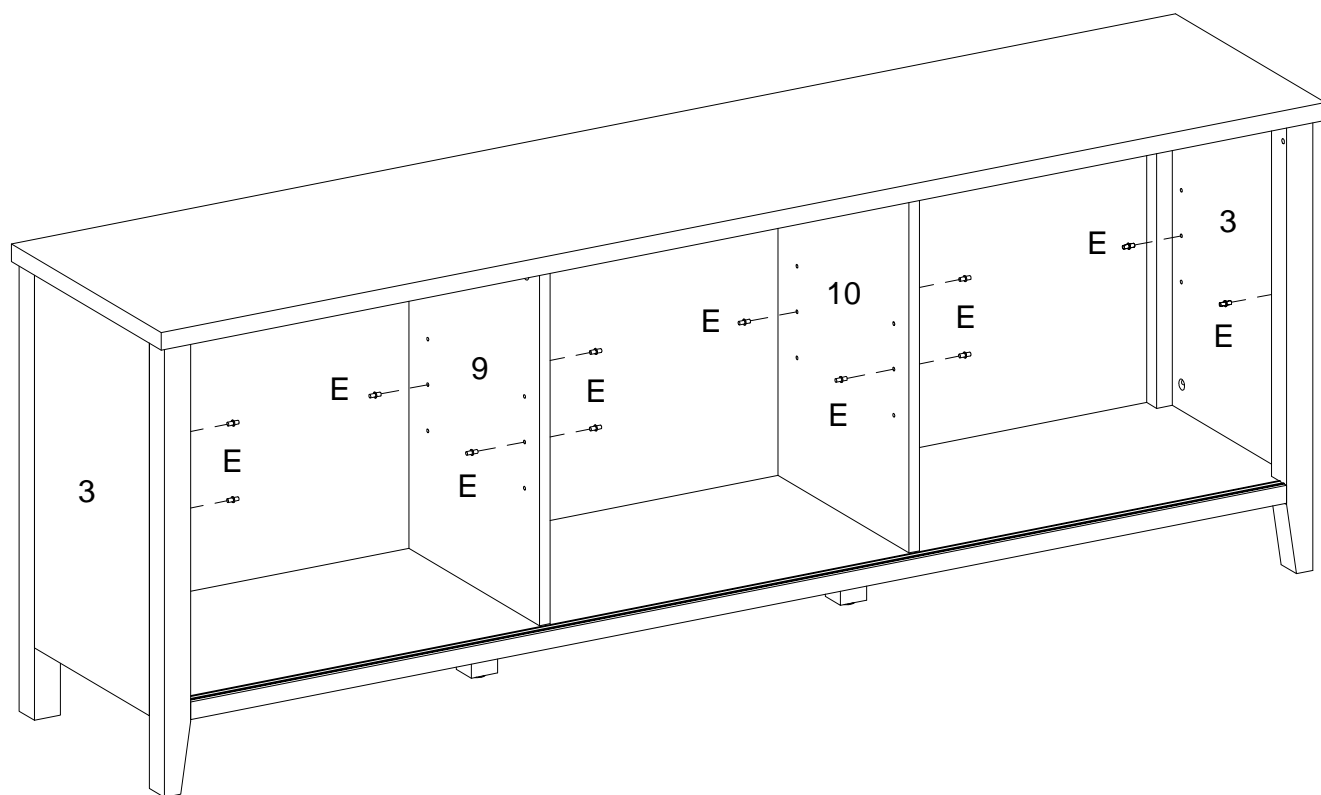
Using screw (L) secure plastic wedge (J) with Philips head screwdriver as per diagram.

Step 12



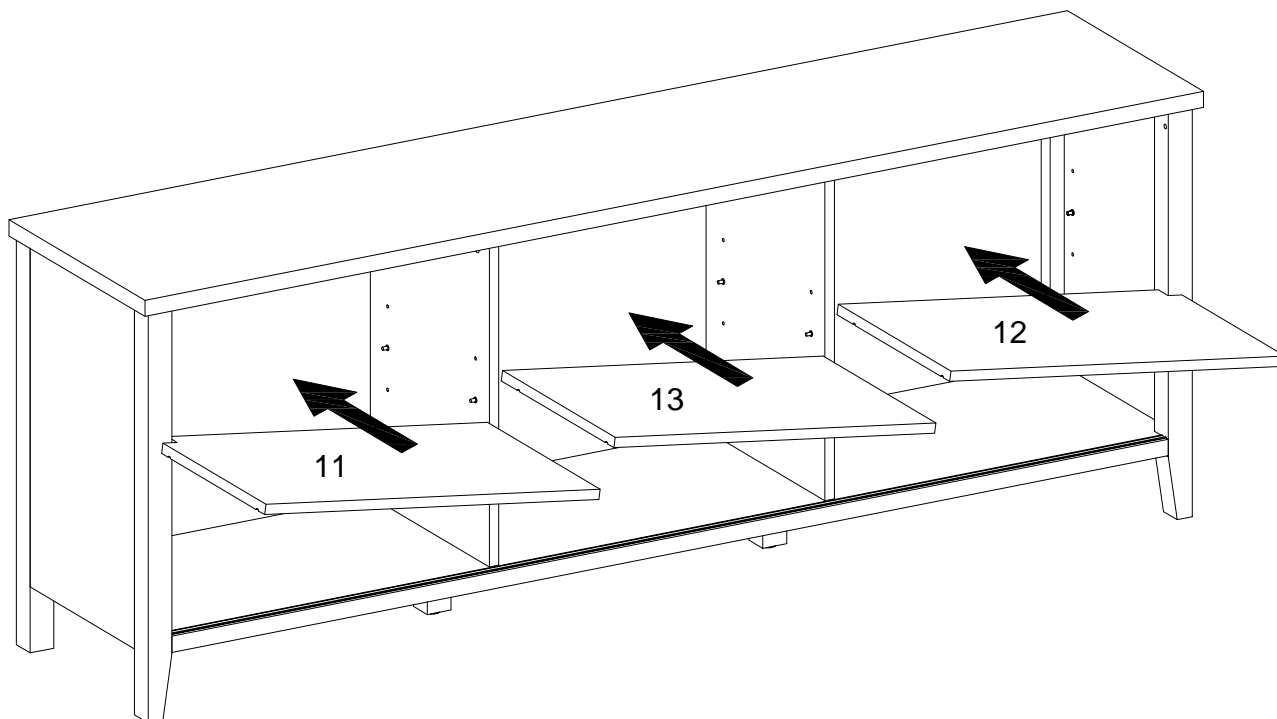
Place sticker cover the holes as per diagram.

Step 13



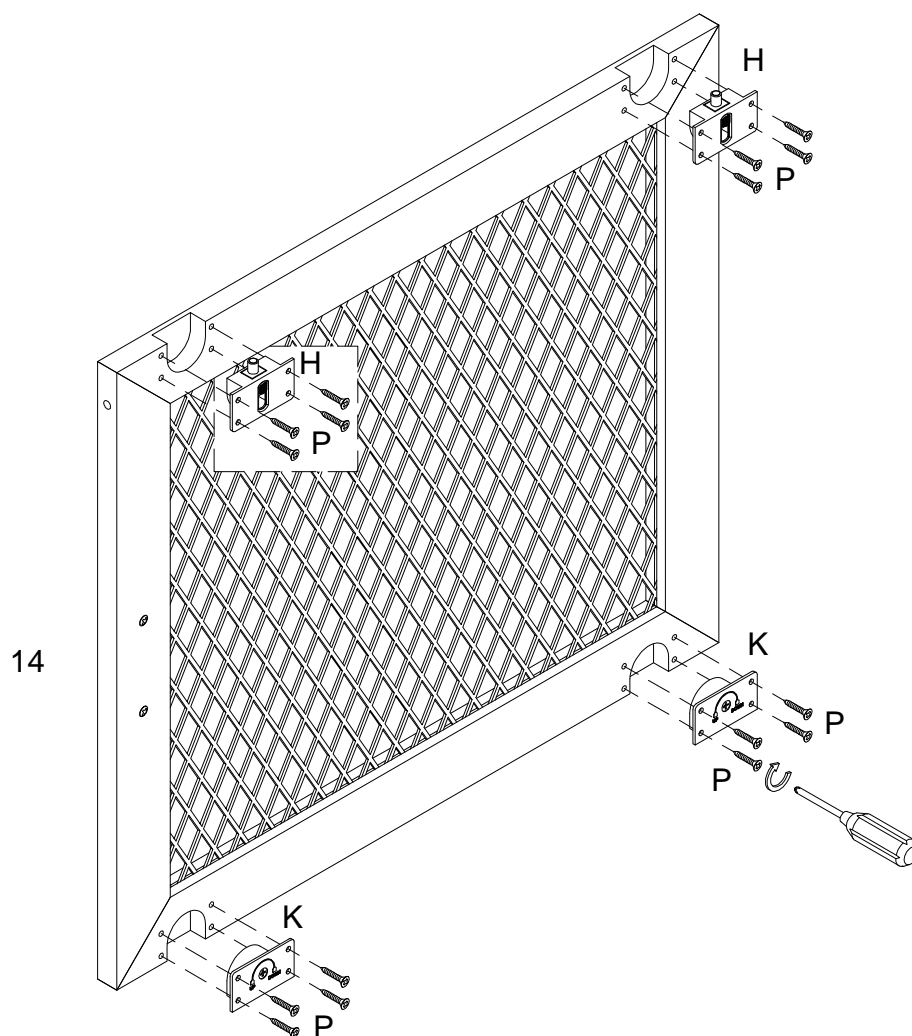
Insert shelf support pin into parts (3,9,10) as per diagram.

Step 14



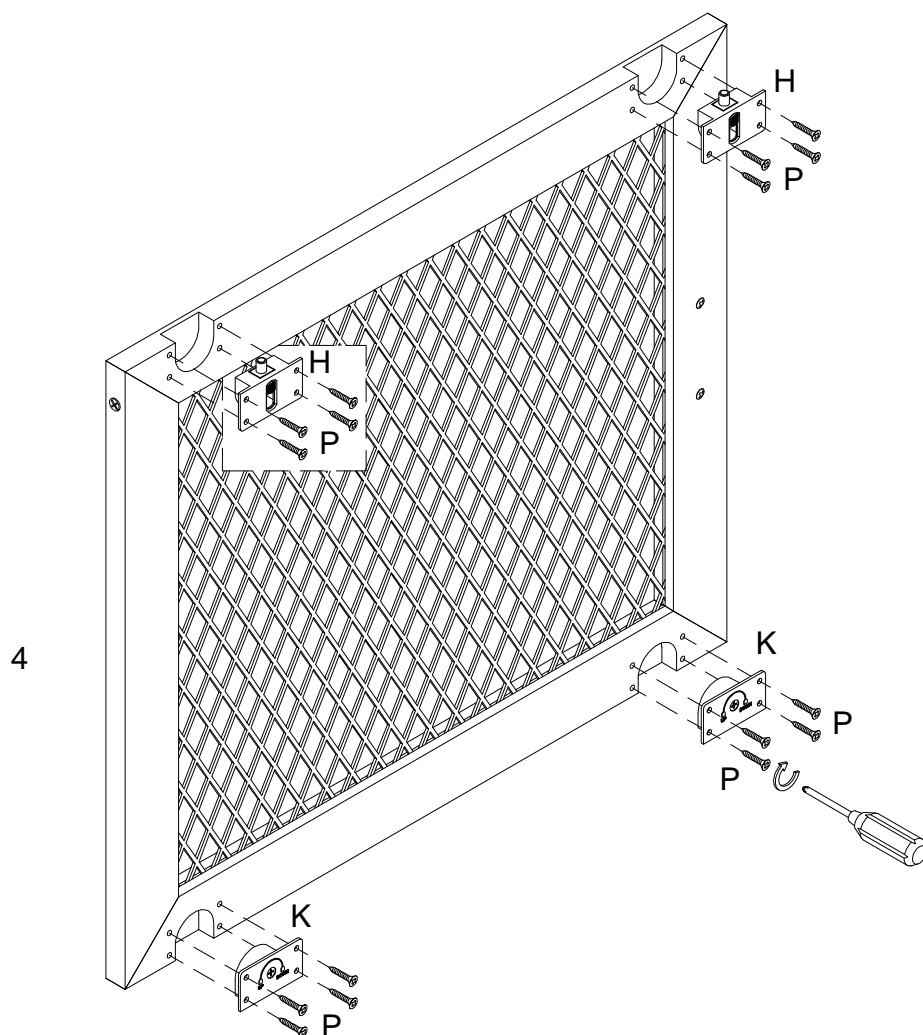
Put parts (11,12,13) into cabinet as per diagram.

Step 15



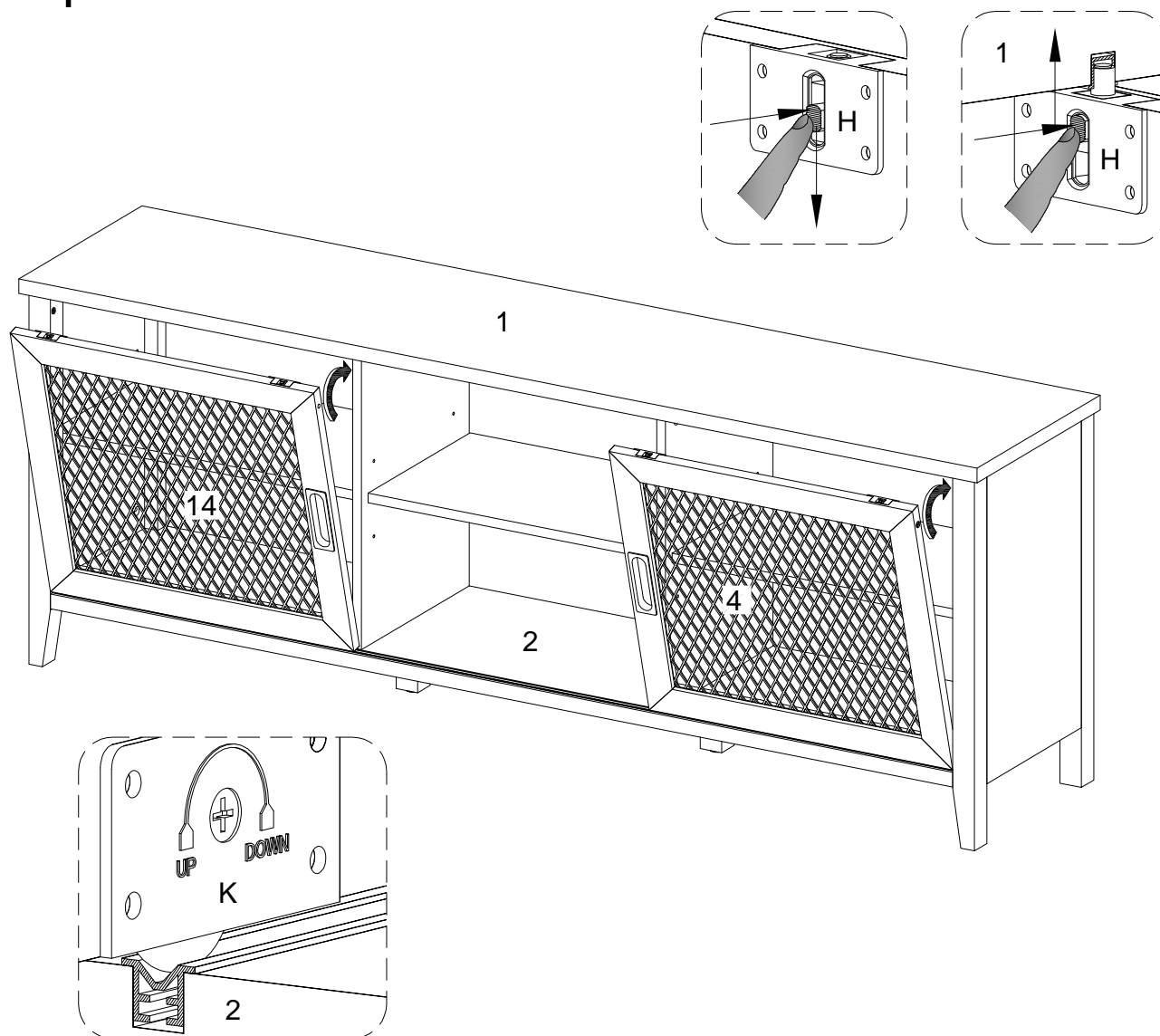
Using screw (P) secure pulley (K,H) into part (14) with Philips head screwdriver as per diagram.

Step 16



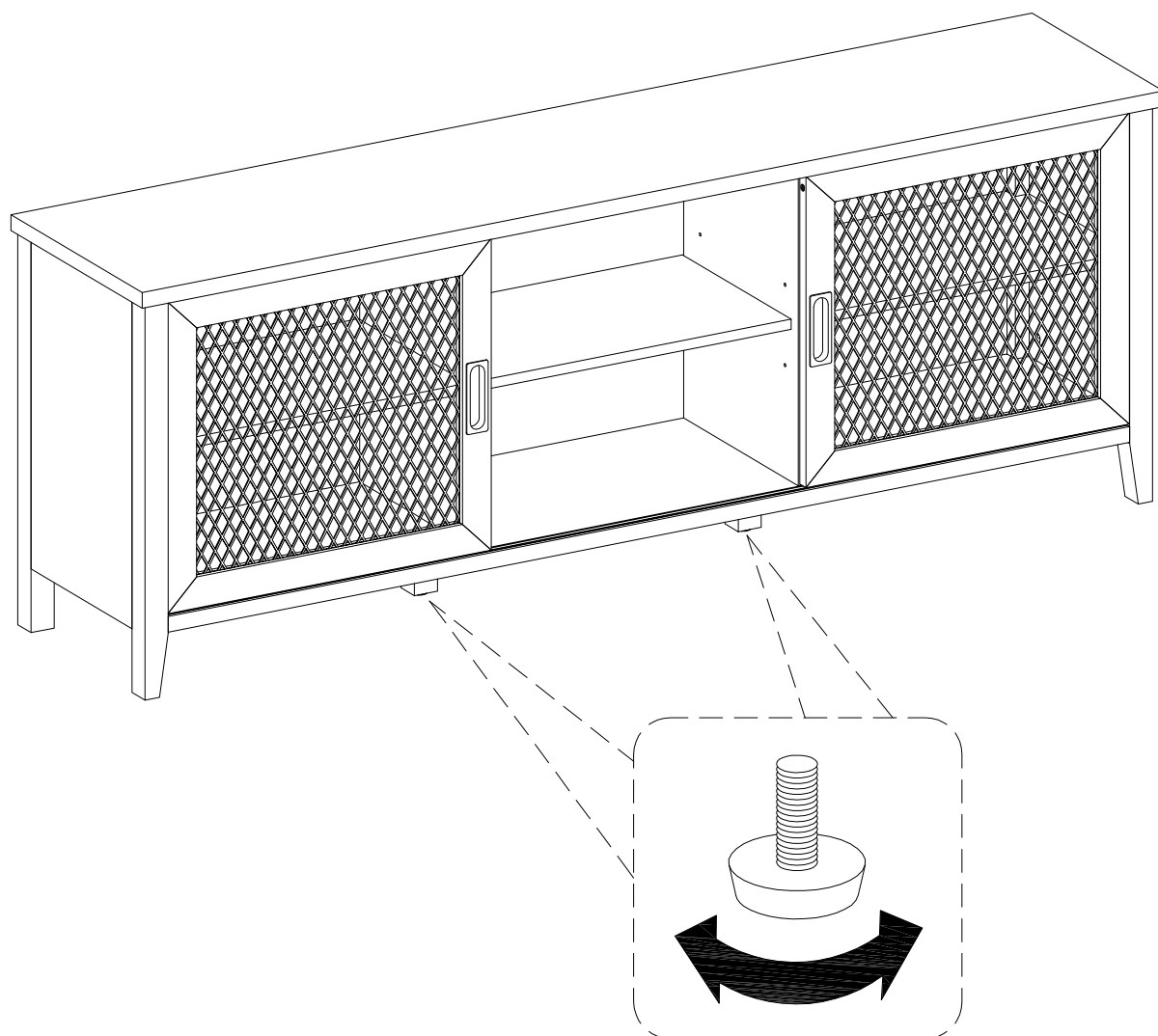
Using screw (P) secure pulley (K,H) into part (4) with Philips head screwdriver as per diagram.

Step 17



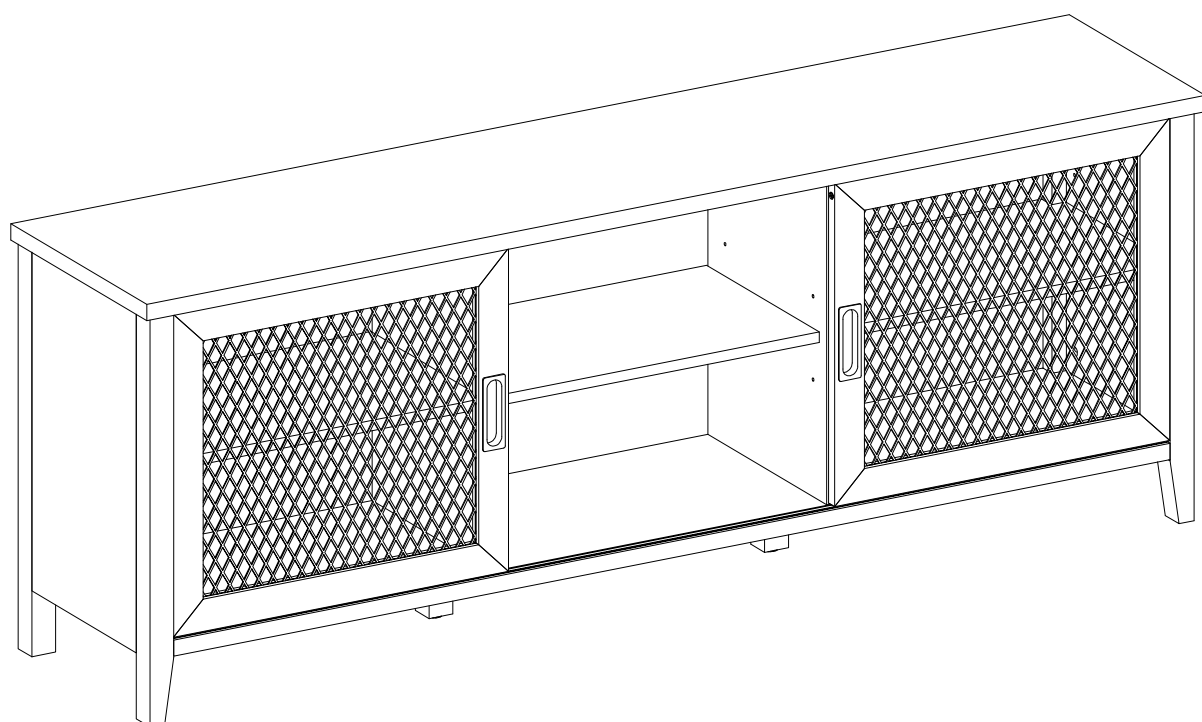
Pick up the doors (4,14), and fit the pulley (K) over the slider rails on the bottom panel (2) ,then place the doors (4,14) into top panel (1) , till it click into pulley (H) as per diagram.

Step 18



If necessary adjust the pre-attached floor levelers to level the unit .

Step 19



Final Assembly