

# CorelDRAW<sup>®</sup> GRAPHICS SUITE

March 2022 Subscriber Update

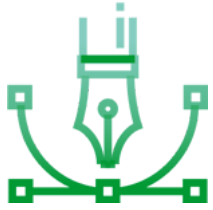
"The most versatile digital  
design tool"

—Leonardo Cardona Perez  
Vector illustrator, Colombia

**Creativity meets productivity in CorelDRAW<sup>®</sup> Graphics Suite:**  
your fully-loaded, professional design toolkit for delivering  
breathtaking vector illustration, layout, photo editing, and  
typography projects with incredible efficiency.



# Why subscribe to CorelDRAW Graphics Suite?



## Design

Produce unique illustrations, signage, logos and more—on Windows or Mac—and on the go with the web or iPad app.



## Collaborate

Collaborate with clients and colleagues using CorelDRAW.app™ to gather real-time feedback from one or many reviewers.



## Done

Deliver exceptional results in less time, thanks to seriously productive tools for any type of output.

A budget-friendly subscription provides incredible ongoing value with instant, guaranteed access to exclusive new features and content, peak performance, and support for the latest technologies.



*"Powerful yet easy to use, CorelDRAW is my vector illustration toolkit of choice!"*

— OCTO, Brazil

## Who's it for?

Enjoyed by diverse designers, industries, and businesses worldwide, from marketing, commerce and sign making, to engineering, manufacturing, and more.

### Graphics and creative professionals

Design logos, brochures, sales and marketing materials, training tools, and other detailed visuals for web or print.

### Production professionals

Produce signage, large-format prints, vehicle wraps, apparel and textile design, embroidery, schematics, engraving, and much more.

### Occasional graphics users in businesses

Create or manipulate visually-rich projects for in-house use, from web graphics and sales presentations, to sell sheets and visual aids.

## Competitive advantages

### All-in-one design and layout

Enjoy integrated functionality for graphic design and layout in one application.

### Flexible, affordable purchasing

Subscribe to a full suite of professional graphic design applications for significantly less than the cost of subscribing to the leading competition. Or choose a perpetual license with maintenance to own your software outright.

### Native OS experience

Create the way you're used to on Windows or Mac, with award-winning software that's been built from the ground up for your platform of choice.

### Design anytime, anywhere

CorelDRAW is also available as a vector illustration iPad and web app, so you can access your work remotely when you're not near your computer.

### Easy to learn & use

Create confidently with a personalized in-app learning experience, bringing relevant tips and tutorials to your fingertips, based on the tools you select, how you work, and what you want to see.

# What's new?

Reap the rewards of a CorelDRAW Graphics Suite subscription, which entitles you to exclusive new features and content not otherwise available.

## March 2022 Subscriber Update

### **NEW!** Faster photo editing

Achieve stunning images with more control than ever, thanks to our continued focus on building a non-destructive, contextual, real-time editing experience.

- Get creative with new, non-destructive stackable adjustment presets. Organize presets into custom categories or choose from a new collection of carefully curated preset styles.
- Work more efficiently with Corel PHOTO-PAINT's totally transformed Adjustments docker/inspector that's up to 10 times faster than before, and find new tools, shortcuts, and commands in the redesigned Adjust menu.
- Enjoy a number of additional user-inspired enhancements to frequently used photo editing features.

### **NEW!** Optimized learning experience

Thanks to optimizations that put tailored training at your fingertips, you'll be successful sooner without having to leave CorelDRAW to brush up on tools and techniques.

- Search an extensive library of online learning content from the Explore section of the new Learn docker/inspector.
- Enjoy personalized recommendations for tutorials that match your experience level and needs.

### **NEW!** Customer-inspired features

We're proud to reveal a variety of enriched features based on suggestions from our loyal users.

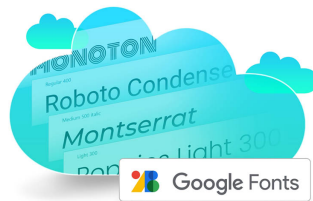
- Add pages faster with less manual arranging, and view and resize pages more naturally, thanks to timesaving new Multipage view and Pages improvements.
- Enjoy new support for TIFF, EPS, and SVG in the Export docker/Inspector, and the ability to select all assets for export with a single click.
- Contribute to CorelDRAW Graphics Suite's design and development by submitting your ideas as they arise and voting on others to bring them to life!

## October 2021 Subscriber Update



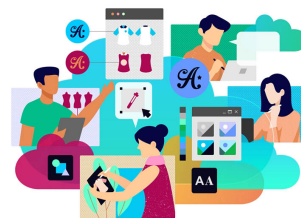
### **Dynamic asset management**

Create a single source of truth for design assets by sharing symbols across projects and with teams, and syncing updates when changes are made by you or others.



### **Time-saving typography**

Cut out the steps to creating head-turning typography with direct access to over a thousand Google Fonts families in Corel Font Manager.



### **Improved collaboration**

Experience a truly efficient collaboration workflow, thanks to a streamlined sign-in process and performance enhancements for faster saving, opening, and sharing of cloud designs.

## Core features

### Vector illustration

Turn basic lines and shapes into complex works of art, and create curves with a robust drawing toolbox for professional design. Add creative effects with tools like Contour, Envelope, Mesh Fill, Impact, and more.

### Page layout

Find all the tools you need to create layouts for brochures, multi-page documents and more. Toggle between single page and multipage editing, giving you creative freedom to work the way you want.

### Photo editing

Adjust color and tone, remove imperfections, correct perspective and more with Corel PHOTO-PAINT's powerful layer-based photo editing tools. Improve the size and quality of your images with artificial intelligence, and use AfterShot HDR to create stunning High Dynamic Range photos from your RAW images.

### Typography

Add effects to text like block shadows and contours, fine-tune fonts responsively, fit text to paths, and more, with a complete set of typography tools.

### Collaboration

Accelerate your creative process with a cloud-based collaboration workflow that offers a dramatically better way to connect with clients and colleagues on designs in real-time. Gather live comments and annotations from one or many contributors right within your CorelDRAW design file and resolve feedback simultaneously.

### Web graphics tools

Develop captivating web content with a collection of web graphics tools and presets. Ensure any graphic you export for the web has crisp edges, thanks to a series of pixel-perfect tools.

### Professional print output

Experience unconstrained control over output to all media types, with advanced printing options that put CorelDRAW ahead of the competition. With a powerful color management engine, you'll have complete confidence that your colors are accurate before you print.

# What's included?

## Main Applications



**CorelDRAW®**  
Vector illustration and page layout



**Corel PHOTO-PAINT™**  
Image editing and pixel-based design



**Corel® Font Manager**  
Font exploration and management



**PowerTRACE™**  
AI-powered bitmap-to-vector tracing  
(included as part of the CorelDRAW application)



**CorelDRAW.app™**  
Online graphic design via web browser and iPad app



**CAPTURE™**  
Screen capture tool (Windows only)



**AfterShot™ HDR**  
RAW photo editor



## Content

- 7,000 clipart, digital images, and vehicle wrap templates.
- 1,000 high-resolution digital photos.
- Over 1,000 TrueType and OpenType fonts plus integrated access to over 1,000 Google Fonts families.
- 150+ professionally designed templates.
- Over 600 fountain, vector and bitmap fills.

## Documentation & training

- Quick Start Guide
- Online Help
- Online training videos
- Built-in learning docker/inspector
- Discovery files accessible through "Get Started" in the Welcome screen

For more information or to try it free, contact your local reseller or visit [www.coreldraw.com](http://www.coreldraw.com)

### Buying for a large organization?

Corel provides significant licensing flexibility and pricing discounts for larger organizations in the commercial, government and academic spaces. To learn more, visit [www.coreldraw.com/business](http://www.coreldraw.com/business)

© 2022 Corel Corporation. All Rights Reserved.

Corel, the Corel balloon logo, CorelDRAW, the CorelDRAW balloon logo, Aftershot, CAPTURE, CorelDRAW.app, Corel PHOTO-PAINT, and PowerTRACE are trademarks or registered trademarks of Corel Corporation in Canada, the U.S., and/or elsewhere. Apple, macOS, iPad and Mac are trademarks of Apple Inc. Google is a trademark of Google LLC. All other company, product and service names, logos, brands and any registered or unregistered trademarks mentioned are used for identification purposes only and remain the exclusive property of their respective owners. Use of any brands, names, logos or any other information, imagery or materials pertaining to a third party does not imply endorsement. We disclaim any proprietary interest in such third-party information, imagery, materials, marks and names of others. For all notices and information about patents please visit [www.corel.com/patents](http://www.corel.com/patents)

Original sample artwork is provided by third parties and is used, and/or modified, by permission, unless otherwise agreed with such parties.

# System Requirements

## Windows

- Internet connection required for registration and updates
- Windows 11 or Windows 10 (Version 21H1 or later), 64-bit, with latest Updates
- Intel Core i3/5/7/9 or AMD Ryzen 3/5/7/9/Threadripper, EPYC
- OpenCL 1.2-enabled video card with 3+ GB VRAM
- 8 GB RAM
- 5.5 GB hard disk space for application and installation files
- Mouse, tablet or multi-touch screen
- 1280 x 720 screen resolution at 100% (96 dpi)
- Internet connection is required to install and authenticate CorelDRAW Graphics Suite and access some of the included software components, online features and content.

## Mac

- macOS Monterey (12), macOS Big Sur (11) or macOS Catalina (10.15), with the latest revision
- Apple M1, M1 Pro, M1 Max or Multicore Intel processor
- OpenCL 1.2-enabled video card with 3+ GB VRAM
- 8 GB RAM
- 4 GB available hard disk space for application files (Solid-state drive recommended); Case-sensitive file systems are not supported
- 1280 x 800 screen resolution (1920 x 1080 recommended)
- Mouse or tablet
- Internet connection is required to install and authenticate CorelDRAW Graphics Suite and access some of the included software components, online features and content.