

Please check that the charger's features, connectors and voltage will be compatible with your devices in accordance to your devices' manual. Please read this manual and its instructions carefully before use. We are not responsible for any damage caused by incorrect or reckless operation.

**Important Safety Information:**

- These safety guidelines are to help operate the charger safely, to ensure your personal safety and reduce the risk of fire, electric shock or injury.
- Do not store or use charger in high-temperature environments, including heat caused by direct sunlight or other intense forms of heat.
- Do not disassemble the charger. (It may cause fire or electric shock.)
- Do not attempt to repair or replace any part of this charger.
- Do not connect a binded cord to the power supply.
- Do not place the cord or device near heating elements.
- If there is any strange sound, smoke or odor, disconnect power cable immediately.
- Do not put any sharp objects into the venting hole of the product. (It may cause fire or electric shock.)
- Do not use a damaged charging cable. (It may cause fire or electric shock.)
- Do not place the product on a bed, bag or inside a closet that does not have good ventilation.
- Always wipe off the product with a dry soft fabric. Do not use liquids. (Liquids may cause electric shock.)
- Ensure the power plug and the power outlet are clean. (Dirt or dust may cause a short circuit and fire.)
- Keep the charger out of reach of children.
- Do not unplug the power cord with a wet hand. (It may cause electric shock.)
- Unplug the power cord if you don't use the product for a long time. (It may cause heat, fire and electric shock.)

This device complies with part 15 of the FCC Rules and RSS-Gen of IC Rules. Operation is subject to the following two conditions: (1) This device may not cause harmful interference, and (2) this device must accept any interference received, including interference that may cause undesired operation.

**NOTE:** This equipment has been tested and found to comply with the limits for a Class B digital device, pursuant to part 15 of the FCC Rules. These limits are designed to provide reasonable protection against harmful interference in a residential installation. This equipment generates, uses, and can radiate radio frequency energy and, if not installed and used in accordance with the instructions, may cause harmful interference to radio communications. However, there is no guarantee that interference will not occur in a particular installation. If this equipment does cause harmful interference to radio or television reception, which can be determined by turning the equipment off and on, the user is encouraged to try to correct the interference by one or more of the following measures:

- Reorient or relocate the receiving antenna.
- Increase the separation between the equipment and receiver.
- Connect the equipment into an outlet on a circuit different from that to which the receiver is connected.
- Consult the dealer or an experienced technician for help.

**CAUTION:** To comply with the limits of the Class B digital device, pursuant to Part 15 of the FCC Rules, this device must be used with certified peripherals and shielded cables. All peripherals must be shielded and grounded. Operation with non-certified peripherals or non-shielded cables may result in interference to radio or reception.

**MODIFICATION:** Any changes or modifications of this device could void the warranty.

160354A7B9 Rev. B

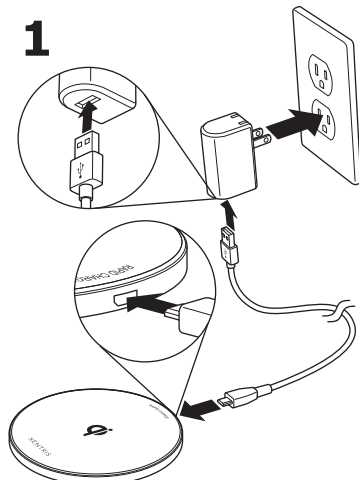
# XENTRIS

## Quick Start Guide

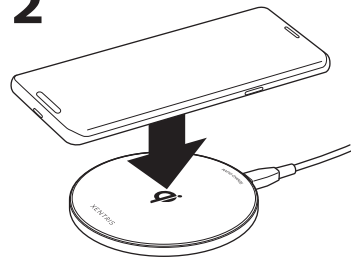


### 10 Watt Qi Rapid Charge Wireless Charging Pad

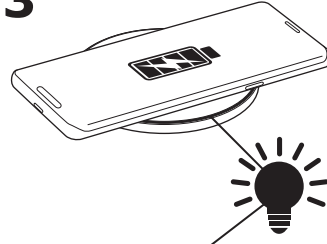
**1**



**2**



**3**



Light Color	Status
Flashing blue (1 sec.)	Powering on
Flashing green (1 sec.)	Powering on
Green	Standby or fully charged
Flashing blue	Charging
Flashing green	Foreign object detected
Off	Power off or over temperature protection

