



## G920 Driving Force Racing Wheel – Xbox

### INDEX

#### GETTING STARTED

- [User guide](#)
  - [What's in the box](#)
  - [Installation](#)
  - [Mounting clamps](#)
  - [Buttons](#)
  - [Connections and mount points](#)
  - [Force feedback](#)
  - [Pedal unit](#)

#### SPECIFICATIONS

- [Product information](#)
- [Product dimensions](#)
- [General product specifications](#)
- [Wheel specifications](#)
- [Pedal specifications](#)

#### FAQs

- [The force feedback on my wheel has changed and I can no longer use the center spring force setting in G HUB to adjust the strength](#)

- [Why don't I feel the center spring on the steering wheel when I tab away or close a game?](#)
- [Troubleshooting G920 for power/connection issues – Xbox](#)
- [How to set up your Logitech Wheel G923, G29, G920 on Assetto Corsa Competizione](#)
- [Troubleshoot G923/G29/G920 for connection Issues](#)
- [Racing Wheel Not Recognized For ACC – Xbox One – SOLUTION](#)
- [Device does not appear in G HUB](#)
- [G HUB freezes while loading and logo animation loops](#)
- [Audio device not recognized](#)
- [Create and scan for profiles with Logitech Gaming Software](#)
  - [Scan for new games](#)
  - [Create new profiles](#)
- [View current profiles in Logitech Gaming Software](#)
- [Digital signature error when Logitech Gaming Software is installed on Windows 7 computers](#)
- [Blue screen after G920 racing wheel is attached to USB port or G25/G27 is not recognized](#)
- [Import racing wheel profiles using Logitech Gaming Software](#)
  - [Scan for new games \(Automatic\)](#)
  - [Import/Export \(Manual\)](#)
- [Set racing wheel profiles to Persistent or Default using Logitech Gaming Software](#)
  - [Set a Default Profile](#)
  - [Set a Persistent Profile](#)
- [View racing wheel profiles using Logitech Gaming Software](#)
- [G920 racing wheel does not respond when connected to Xbox One](#)
- [Create and edit racing wheel profiles using Logitech Gaming Software](#)
  - [Create a new profile](#)
  - [Edit an existing profile](#)
  - [Delete a profile](#)
- [Program buttons on the G920 racing wheels with Logitech Gaming Software](#)
  - [Default Button Layouts](#)
  - [Customizing Buttons](#)
  - [Game-Specific Profile Commands](#)
  - [Command Editor](#)
  - [Resetting Buttons](#)
- [Pedals on the G920 racing wheel do not respond](#)

- [Lock racing wheel profile using Logitech Gaming Software](#)
- [Mounting templates for the G920 racing wheel](#)
- [Mount and secure the G920 racing wheel using the clamping system](#)
  - [Wheel Unit](#)
  - [Pedal Unit](#)
  - [Cable Management](#)
- [Adjust sensitivity on the G920 racing wheels with Logitech Gaming Software](#)
  - [Steering Sensitivity](#)
  - [Wheel Operating Range](#)
  - [Pedal Sensitivity](#)
- [Clutch pedal on the G920 racing wheel does not function properly](#)
- [Force feedback turns off intermittently on G920 racing wheel](#)
- [No force feedback when using the G920 racing wheel on a PC](#)
- [Supported gaming console systems for the G920 racing wheel](#)
- [Mount and secure the G920 racing wheel using built-in bolt mounting points](#)
  - [Wheel Unit](#)
  - [Pedal Unit](#)
  - [Cable Management](#)
- [Supported PC operating systems for the G920 racing wheels](#)
- [Optimize pedal face positions on the G920 racing wheel](#)
- [Logitech G HUB – FAQs](#)
  - [About Logitech G Hub](#)

## WARRANTY

- [Hardware warranty](#)

## CONTACT US

- [Logitech Support](#)

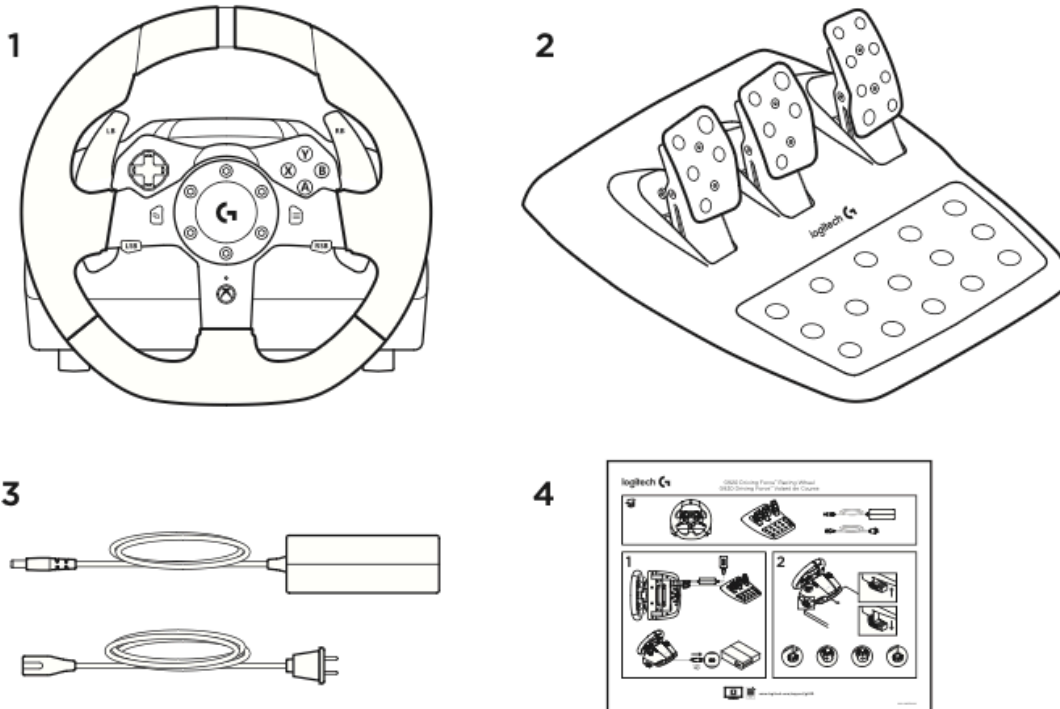
## DOWNLOAD

- [G Hub](#)

# GETTING STARTED

## USER GUIDE

### What's in the box

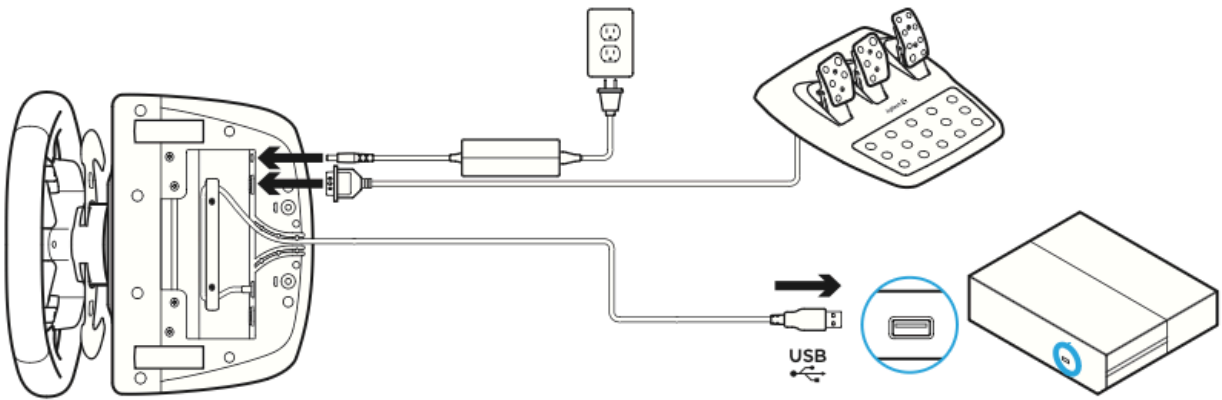


1. Racing wheel
2. Pedal unit
3. Power adapter
4. User documentation

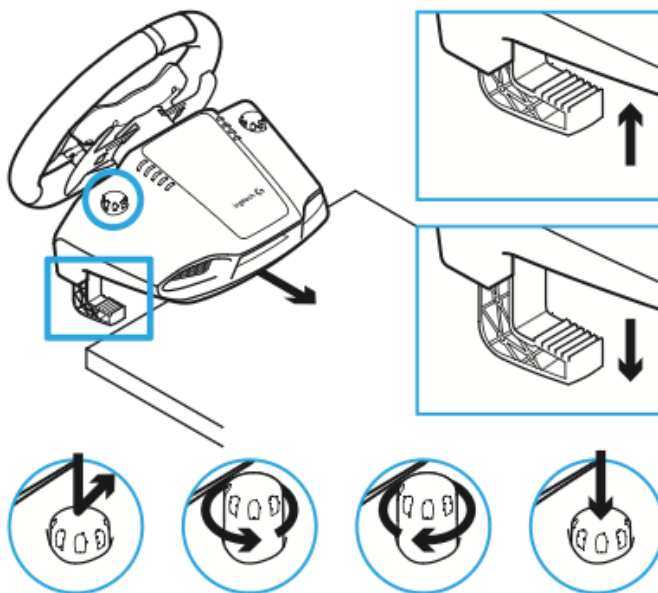
## Installation

Attach power adapter and USB cables as shown.

Every time your Racing Wheel connects with your system, it will rotate fully to each side and then to the center to calibrate. Your wheel will be ready once this calibration is completed.



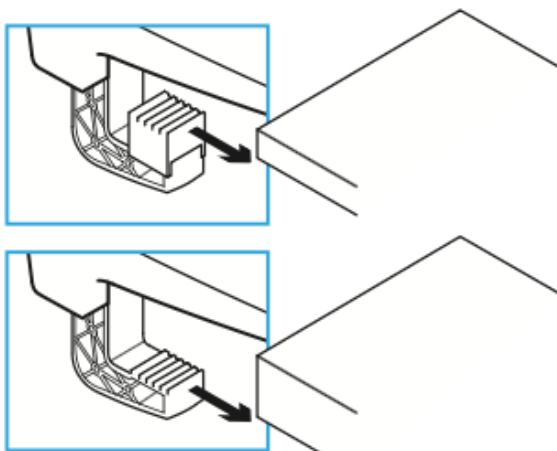
## Mounting clamps



G920 Driving Force Racing Wheel is equipped with a built in clamping system for mounting to a table.

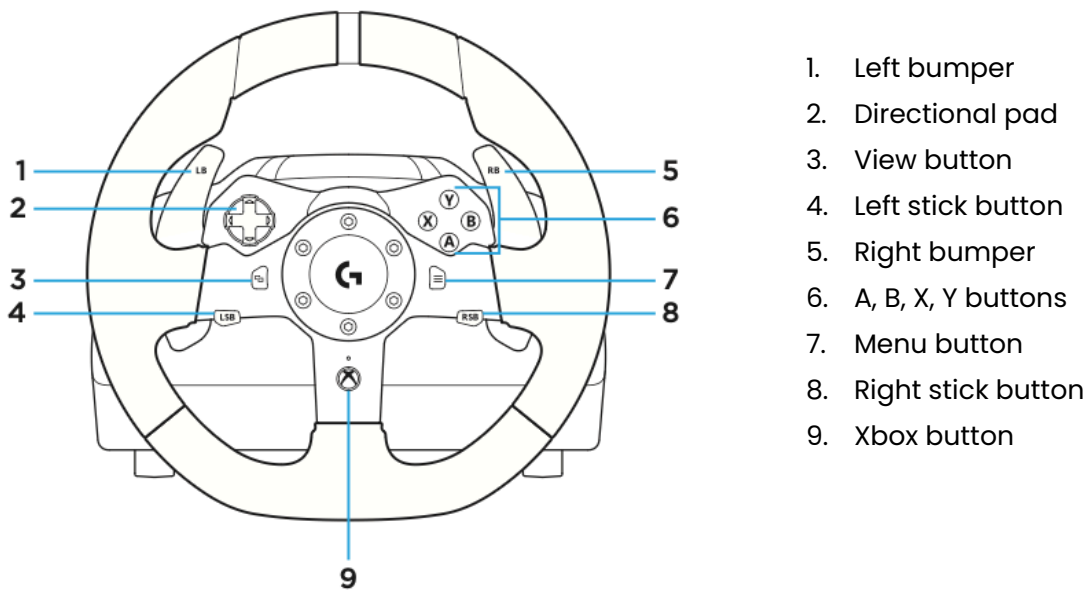
Push down and rotate clamp knobs to lock or unlock.

Rotate clamp knobs to tighten or loosen clamps.



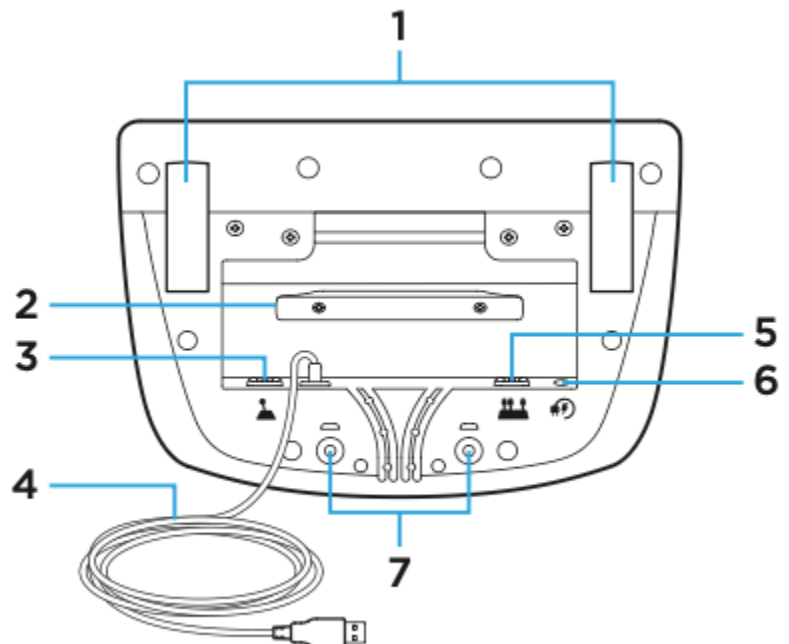
**NOTE:** Clamp extenders should be removed for attachment to thicker tables.

## Buttons

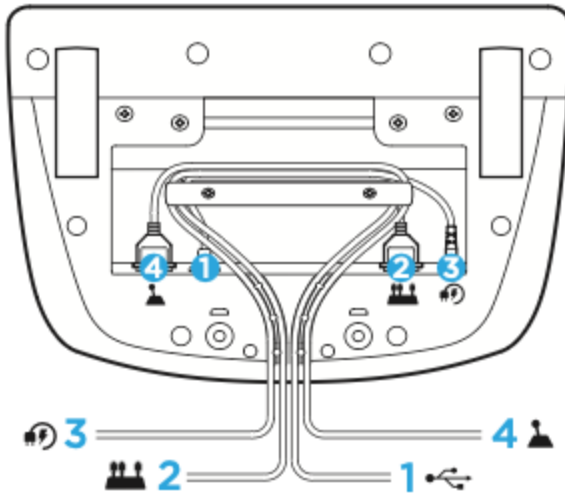


## Connections and mount points

1. Mounting clamps
2. Cable management cleat
3. Optional shifter connection (DB-9 male)
4. USB cable
5. Pedal unit connection (DB-9 female)
6. Power connection
7. Bolt mounting points (uses M6X1 bolts)

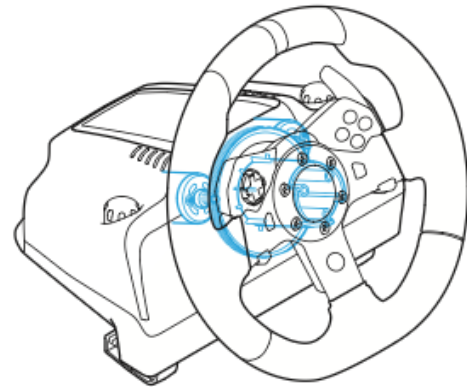
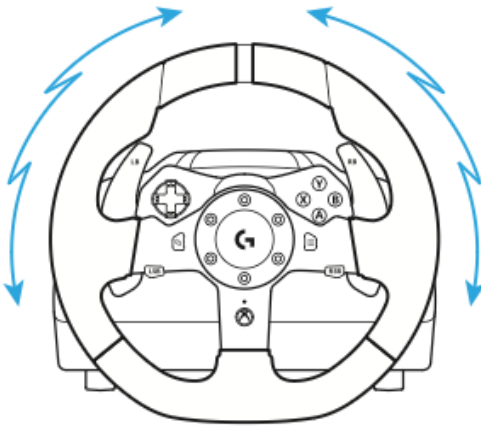


## Optimal cable routing



USB and pedal cables (1, 2) should be routed through inner channels. Power and optional shifter cables (3, 4) should be routed through outer channels. Cables may be wrapped multiple times around cable management cleat to take in slack.

## Force feedback

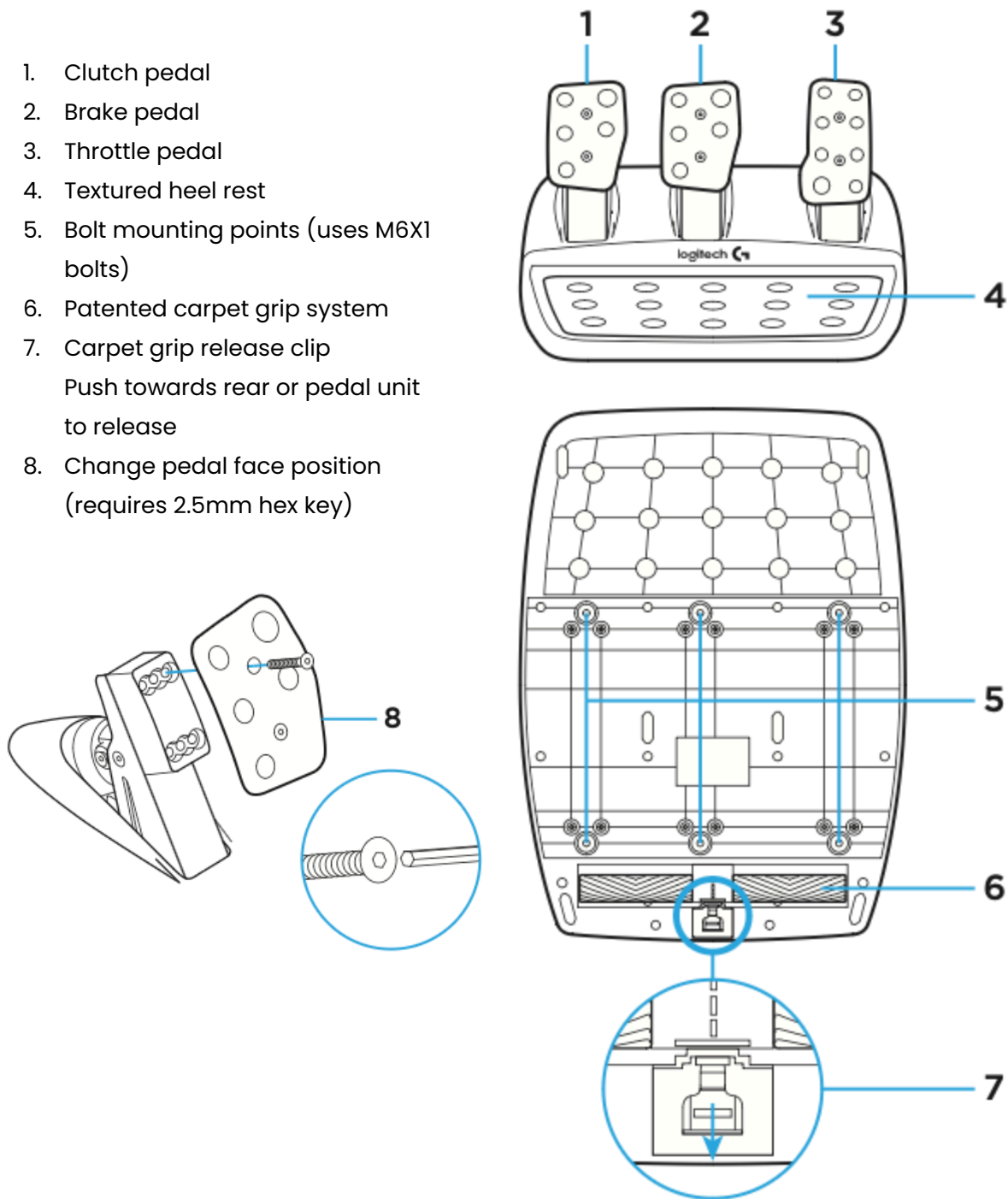


Your Racing Wheel contains dual motors that will provide force feedback with supported games and systems.

Note: Your racing wheel has an overheat protection circuit safeguard to protect it under high-temperature operating conditions. In rare instances, force feedback features may shut down during use while controls continue to operate. If this occurs, allow the wheel to cool down and power it down by unplugging it. If this occurs frequently, contact product support.

## Pedal unit

1. Clutch pedal
2. Brake pedal
3. Throttle pedal
4. Textured heel rest
5. Bolt mounting points (uses M6X1 bolts)
6. Patented carpet grip system
7. Carpet grip release clip  
Push towards rear of pedal unit to release
8. Change pedal face position  
(requires 2.5mm hex key)





## SPECIFICATIONS

Product Information		
Component	Model Number (M/N)	Location
Wheel	W-U0002	Under wheel base

Product Dimensions				
Component	Height	Width	Depth	Weight
Wheel	270 mm (10.63 in)	10.94 mm (278 in)	260 mm (10.24 in)	2.25 kg (4.96 lb)
Pedals	167 mm (6.57 in)	311 mm (12.24 in)	428.5 mm (16.87 in)	3.10 kg (6.83 lb)

General Product Specifications	
Software Support (at release)	Logitech Gaming Software
OS/Platform Support (at release)	Windows 7, Windows 8, Windows 8.1, Windows 10 Xbox One
Apps Available (at release)	N/A
System Requirements	<ul style="list-style-type: none"> <li>Xbox One and games that support Logitech® force feedback racing wheel.</li> </ul>

System Requirements	<ul style="list-style-type: none"> <li>Windows 10, Windows 8, 8.1, or Windows 7, 150 MB of available hard disk space, USB port, games that support Logitech® force feedback racing wheel.</li> </ul>
---------------------	--

Wheel Specifications	
Connection Type	USB (corded)
USB VID_PID	VID_046D&PID_C262 (PC Mode)
USB Protocol	USB 2.0
USB Speed	Full-speed
Indicator Lights (LED)	Power/Status
Wheel Rotation	900 degrees (Max)
AC Adapter	24V 1.75A, Auto Switching
Special Buttons	Directional Pad X, Y, A, B LB / RB (Paddles) LSB / RSB Xbox View Menu
Other Features	Dual-motor force feedback; helical gearing
Cable Length (USB)	6 ft (1.8 m)

Pedals Specifications	
Connection Type	Pedals connection - DB9 (Male)
Special Buttons	Pedals (3) - Throttle, Brake, and Clutch
Other Features	Retractable non-slip pad (underside of pedal base)
Cable Length	6 ft (1.8 m)

## FAQs

- [The force feedback on my wheel has changed and I can no longer use the center spring force setting in G HUB to adjust the strength](#)

The setting in G HUB is called **Centering Spring in Non Force Feedback Games**. If a game supports force feedback, it takes full control of the wheel as soon as it loads and that setting will have no effect on the wheel. You'll need to use the in-game settings that are available to adjust the wheel instead.

If you were previously able to use the setting in your games, this suggests that the wheel was not previously installed correctly. We have made improvements to the install process of the wheels in order to correct issues and you're now getting the full benefit of your force feedback wheel's capabilities.

- [Why don't I feel the center spring on the steering wheel when I tab away or close a game?](#)

The center spring is disabled on the wheel when you tab away or close a force feedback compatible game. However, it will be reactivated when you resume the game or make changes to the device slider values in Logitech G HUB.

As of June 2023, there is an issue for titles that do not support force feedback which results in zero centering spring force on the wheel. This is being investigated.

- [Troubleshooting G920 for power/connection Issues - Xbox](#)
  1. Try with a different power source. Connect the power cable directly to the power outlet.
  2. Plug the device into a different USB port on your console. Do not use a USB hub or other similar device.
  3. Check the cables. ([Mount and secure the G920 racing wheel using built-in bolt mounting points](#)).
  4. [G920 racing wheel does not respond when connected to the Xbox One.](#)
  5. Check for System Updates.
  6. Check for the game updates.
  7. Check the console and in-game settings.

8. Try testing the device with different games or consoles.
9. Try testing the device on a computer.

- [How to set up your Logitech Wheel G923, G29, G920 on Assetto Corsa Competizione](#)

The following video explains how to set up your wheel on Assetto Corsa Competizione (ACC). [youtu.be/67PENT7ljqw](https://youtu.be/67PENT7ljqw).

**NOTE:** If you need to get the latest version of G HUB you can download it here: [support.logi.com/hc/en-001/articles/360025298133](https://support.logi.com/hc/en-001/articles/360025298133).

If you are experiencing connection issues with your Logitech wheel, please see [Troubleshoot G923/G29/G920 for connection issues](#).

- [Troubleshoot G923/G29/G920 for connection issues](#)

The following video guides you through troubleshooting your G923/G920/G29 in four steps, ranging from beginning to advanced. The timestamp for each troubleshooting step is available below for quick access: [youtu.be/OgbNLxZJgHk](https://youtu.be/OgbNLxZJgHk).

**NOTE:** If you need to get the latest version of G HUB you can download it here: [support.logi.com/hc/en-001/articles/360025298133](https://support.logi.com/hc/en-001/articles/360025298133).

### Timestamps:

00:00- Introduction  
 00:10 - Power  
 01:27 - G HUB  
 02:06 - Windows Controller  
 02:56 - Steam Support  
 03:34 - Advanced - Using Windows Registry Editor

1. **POWER** — How to identify and diagnose if the wheel is receiving the appropriate amount of power.
2. **G HUB and the Windows Controller** — Use G HUB to validate that the wheel is properly connected to your system, and that your inputs are being received. Next, identify that

the wheel is actually visible in the Windows native controller module and ensure that all of the buttons are working properly.

3. **Steam Support** — We will identify if the Steam Controller support options in your Steam title are creating any conflict with your inputs.
4. **Advanced - Using Windows Registry Editor** — This is to help resolve Wheel and Pedal Calibration Issues and a blank test page in Windows Controller Properties. This step is considered advanced as this involves working directly within the Registry. Please double-check your work before making any changes.

The registry path for each product is as follows:

G923 XBOX	Computer\HKEY_CURRENT_USER\System\CurrentControlSet\Control\MediaProperties\PrivateProperties\Joystick\OEM\VID_046D&PID_C26E
G923 PS	Computer\HKEY_CURRENT_USER\System\CurrentControlSet\Control\MediaProperties\PrivateProperties\Joystick\OEM\VID_046D&PID_C266
G29	Computer\HKEY_CURRENT_USER\System\CurrentControlSet\Control\MediaProperties\PrivateProperties\Joystick\OEM\VID_046D&PID_C24F
G920	Computer\HKEY_CURRENT_USER\System\CurrentControlSet\Control\MediaProperties\PrivateProperties\Joystick\OEM\VID_046D&PID_C262

- [Racing Wheel Not Recognized For ACC – Xbox One – SOLUTION](#)

Since the Xbox One and PS4 versions of Assetto Corsa Competizione were released on console, there have been numerous reports of the game not recognizing a racing wheel. Some consumers are finding issues with Xbox wheels in the new console version of ACC. The symptoms vary from the wheel not working to just the pedals not working.

Our game developers are working on a solution so they can include the fix in the next update. We don't yet have an exact date for the update but it should be soon.

In the meantime, the following instructions have worked for users:

**Option 1**

Unplug and replug your wheel — this often solves the issue.

However, if it doesn't, try the following:

## Option 2

1. Don't connect your racing wheel. Instead, use your regular controller to load up a practice session. Click Drive to be sent out of the pits and then click Start to go into the menu.
2. Disconnect your controller by turning it off. The game should display "Controller disconnected".
3. Now, connect your racing wheel via USB to your console, and let the wheel calibrate itself.
4. Once the wheel has auto-calibrated itself, click "A" on your steering wheel to close the "Controller disconnected" message. Then select your gamer profile.
5. Your wheel should now be recognized, and the steering and pedal inputs working. You may need to jump into the controller menu, select the racing wheel, and change your steering ratio to 900.
6. Finally, you will have to set up all of your inputs manually. Kunos haven't given us any presets. Just be sure to save your custom preset when you have it set up the way you like!

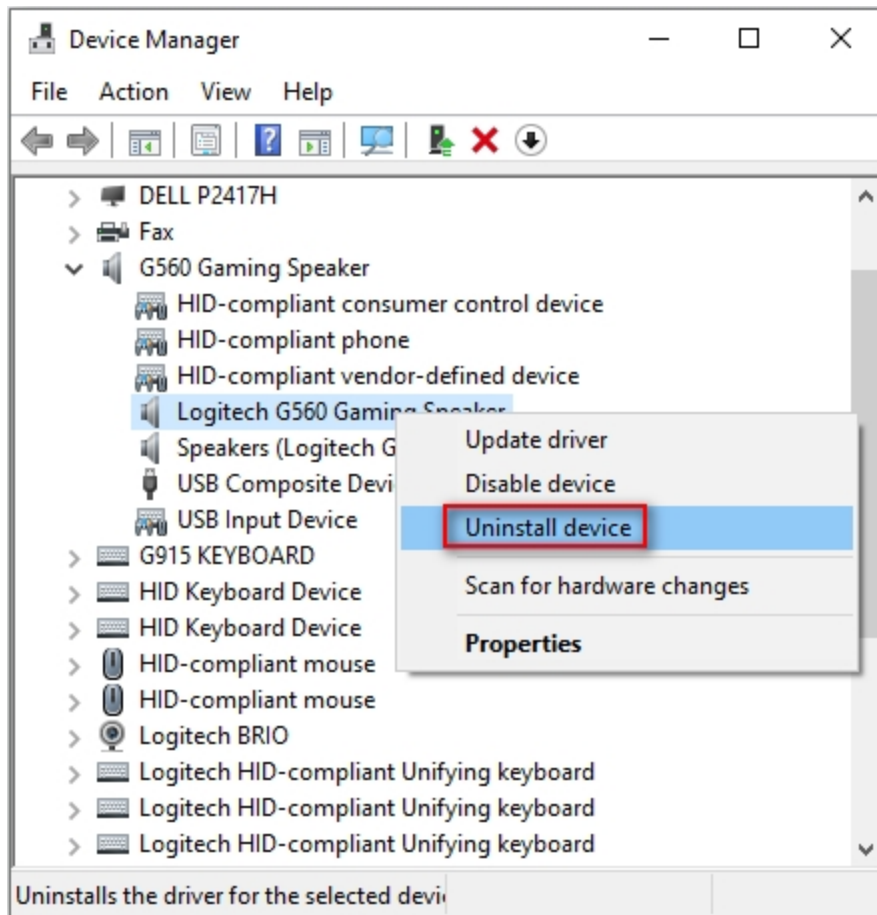
You can find the full article from [simracingsetup.com](http://simracingsetup.com) here:

[simracingsetup.com/assetto-corsa/wheel-not-recognized-for-acc-xbox-one-solution/](http://simracingsetup.com/assetto-corsa/wheel-not-recognized-for-acc-xbox-one-solution/)

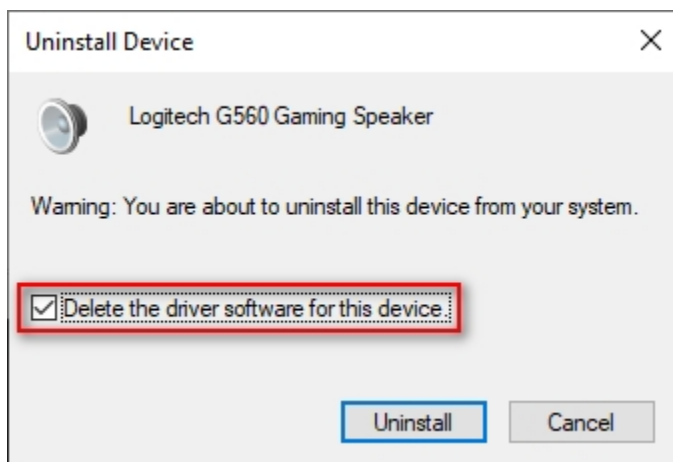
- Device does not appear in G HUB

If some features of G HUB do not appear to work correctly and restarting doesn't help, try this:

1. Go to Device Manager (**WIN+PAUSE|BREAK**).
2. Click on **View** at the top and view **Devices by container**.
3. Look for your device and expand it. You are looking for the name of the device, for example, Logitech Pro X Gaming Headset, or Logitech G560 Gaming Speaker.
4. Right-click and select **Uninstall Device**.



5. Check **Delete the driver software for this device** and then click **Uninstall**.



6. Unplug the device and plug it back into a different USB port. It should re-enumerate and be detected in G HUB.
7. G HUB should then download the driver for your device.



If issues persist:

### Run G HUB with the default settings:

1. Exit G HUB by right-clicking the applet in the task tray and selecting **Quit**.
2. Navigate to C:\Users\[USERNAME]\AppData\Local\LGHUB, where [USERNAME] will be specific to your account.
3. Find settings.json and make a copy and back this up somewhere on your computer. The Desktop is a good place so you can find it easily.
4. Navigate to C:\Users\[USERNAME]\AppData\Local\LGHUB, where [USERNAME] will be specific to your account.
5. Delete the settings.json file in the LGHUB folder.
6. Run G HUB. You will notice that all the settings have been set back to default and the settings.json file has been rebuilt.

### Restoring your old settings

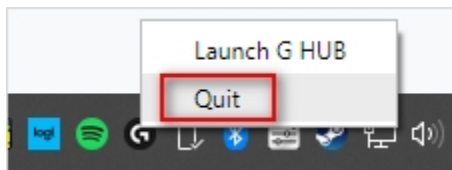
If you want to restore your old settings:

1. Quit G HUB.
2. Copy and paste the backup of settings.json that you saved earlier into the C:\Users\[USERNAME]\AppData\Local\LGHUB folder.
3. Run G HUB — your old settings should be restored.

- G HUB freezes while loading and logo animation loops

If G HUB seems to be stuck while trying to load and the logo animation loops, try the following:

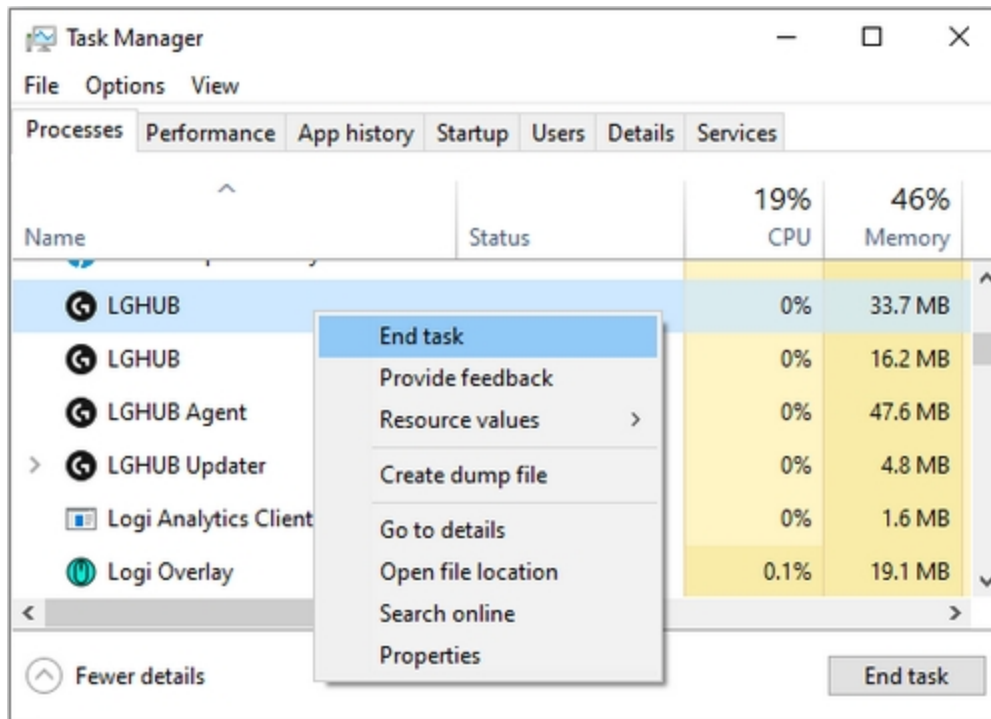
1. Exit G HUB by right-clicking the applet in the task tray and selecting **Quit**.



2. Navigate to Task Manager (**CTRL+ALT+DEL**).

**NOTE:** You may also need to click **More Details** at the bottom of the window

Look for LGHUB, LGHUB Agent and LGHUB Updater, right-click and choose **End task** on each.



3. Once those processes are ended, navigate to C:\Program Files\LGHUB and run these in order:
  - Lghub\_updater.exe
  - Lghub\_agent.exe
  - Lghub.exe

This should resolve the logo spinning issue. If it doesn't, then make sure you're running with admin privileges. G HUB might need to update and needs admin privileges to do this.

If you're using an administrator account and the issue persists, please follow the steps here: [support.logi.com/hc/en-us/articles/360023192454-G-HUB-Install-Uninstall-Update-Troubleshooting](https://support.logi.com/hc/en-us/articles/360023192454-G-HUB-Install-Uninstall-Update-Troubleshooting)

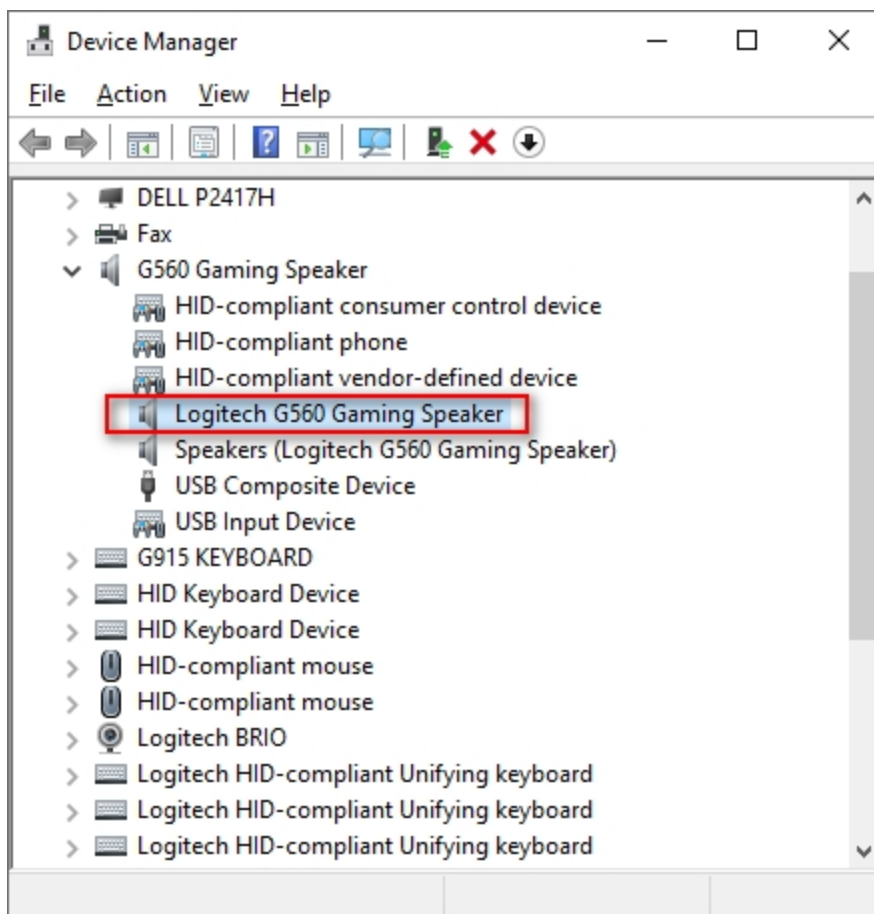
- Audio device not recognized

If you have problems with a headset or speaker, the following:

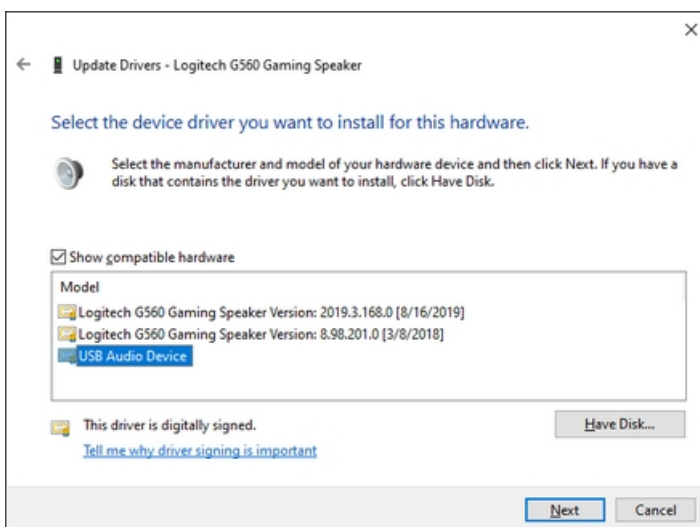
#### Revert back to Microsoft drivers:

1. Go to Device Manager (**WIN+PAUSE|BREAK**).
2. Click on the **View** tab at the top and select **Devices by container**.

- Look for your headset/speaker and expand it. You are looking for the named device, for example, Logitech G560 Gaming Speaker or Logitech Pro X Gaming Headset.



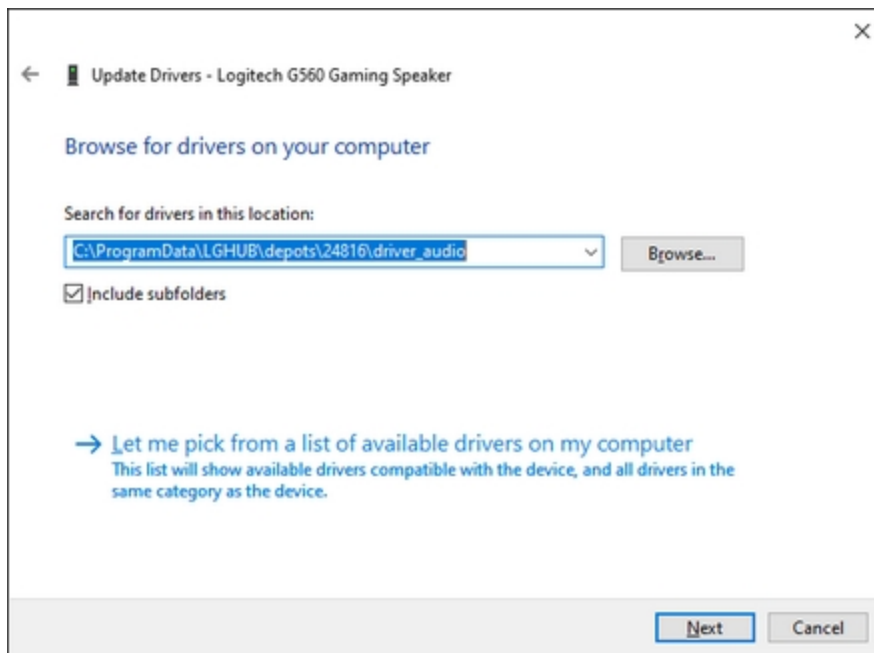
- Right-click and click **Properties** and then select the **Driver** tab.  
The **Driver Provider** should be Logitech — if it's Microsoft you don't need to change the driver.
- If the driver is Logitech, click **Update Driver** and then **Browse my computer for driver software** > **Let me pick from a list** > **choose USB Audio Device**.



- Click **Next**. This should update back to Microsoft's standard drivers.

### Update to latest Logitech Audio Driver:

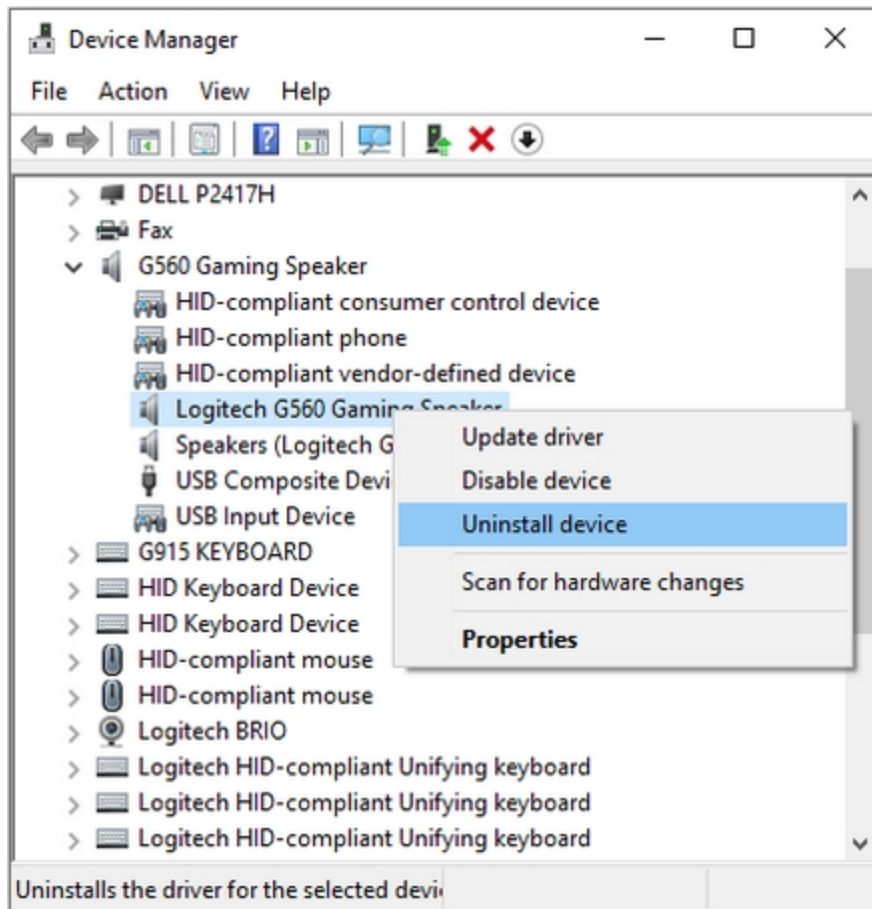
- On the same device in **Device Manager**, right-click on **Properties** and then click the **Driver** tab.
- Click **Update Driver** > **Browse my computer for driver software**.
- Click the **Browse** button to the right of Search for drivers in this location:  
Navigate to: C:\ProgramData\LGHUB\depots\2xxxx\driver\_audio\ (*note that although the five-digit number might be different, you are looking for a folder containing the driver audio folder*).



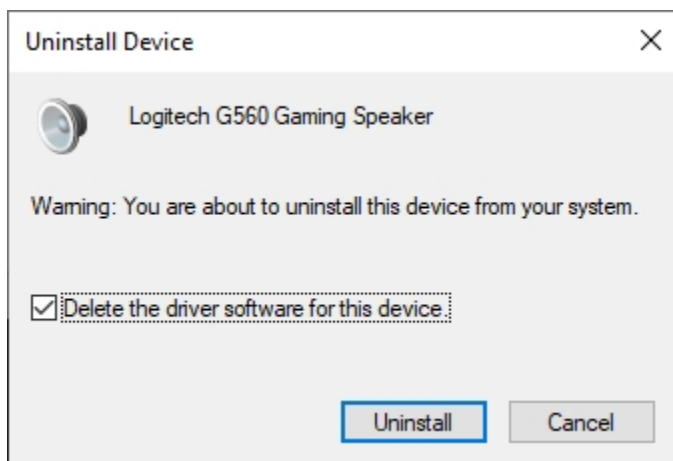
- Click **Next** to update to the latest audio driver.

If issues persist:

- Go to Device Manager (**WIN+PAUSE|BREAK**).
- Click on **View** at the top and select **View devices by container**.
- Look for your device in the list and expand it. You are looking for the named device, for example, Logitech Pro X Gaming Headset, or Logitech G560 Gaming Speaker.
- Right-click and select **Uninstall device**.



5. Check **Delete the driver software for this device** and then click **Uninstall**.



6. Unplug the device and plug it back into a different USB port. It should re-enumerate and be detected in G HUB.
7. G HUB should then download the driver for your device.

- Create and scan for profiles with Logitech Gaming Software

Logitech Gaming Software (LGS) includes support for approximately six hundred games as of release 8.91. When you run the software for the first time, it should scan and automatically set up game profiles for you. If you install more games later, you can rescan for supported games and have profiles imported for them. You use profiles to customize pointer, lighting or G-key/function key command assignments for every individual game and application. If you prefer, you can also just use one profile for all your games and applications.

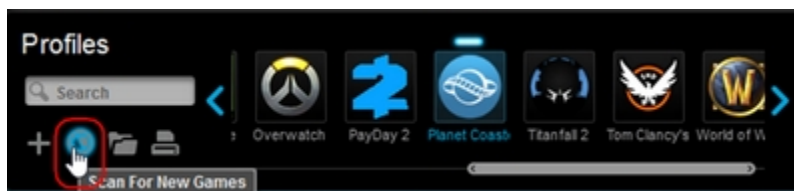
There are two ways to set up profiles for your games or applications:

---

### Scan for new games

Logitech Gaming Software's game profiles are created using registry entries from either Steam, uPlay, Battle.net, or Origin. Certain game profiles are associated with multiple publisher's registry entries, but the majority are linked to the Steam registry entry, excluding the games that are available exclusively on Battle.net or Origin. See a complete list of games here: [support.logi.com/hc/en-001/articles/360023187674](https://support.logi.com/hc/en-001/articles/360023187674).

1. Open Logitech Gaming Software (LGS).
2. Navigate to the Home window for your mouse, keyboard or headset.
3. Select **Customize buttons**, **Customize Function keys** or **Customize G-keys** depending on the device.
4. In the Profiles pane, click **Scan For New Games**.



5. Once the profiler has completed its scan, click **OK** to add the profiles to your list.

**NOTE:** A profile for the selected game should appear in the Profiles pane.

If you own a game that is not automatically detected by the Scan for New Games feature, you can make a few minor adjustments to set up the profile. For more information, please visit: [support.logi.com/hc/en-001/articles/360023176594](https://support.logi.com/hc/en-001/articles/360023176594).

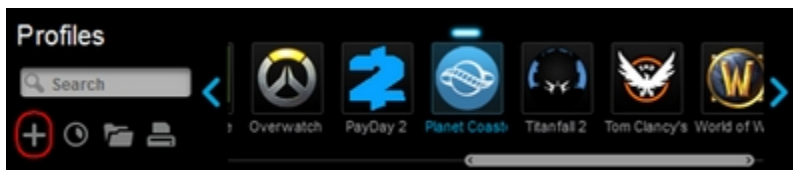
---

## Create new profiles

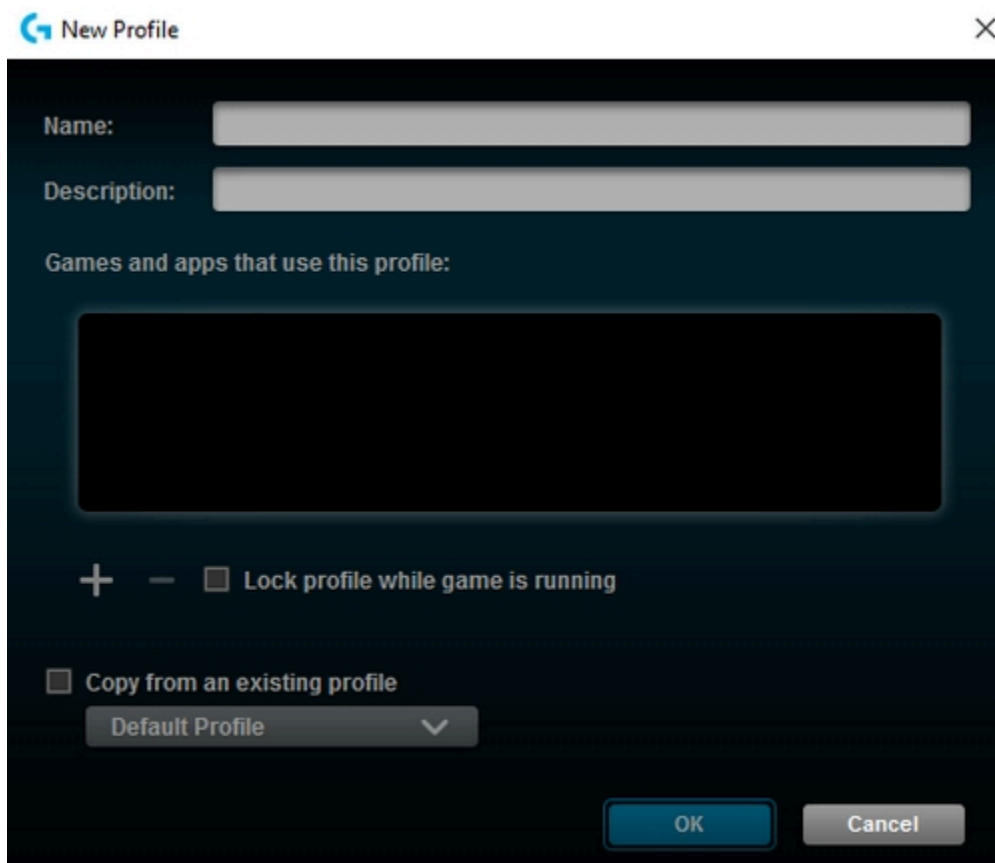
If the Scan For New Games list does not contain the game you want, LGS offers the ability to create your own profile. Here's how:

**TIP:** LGS can store profiles for any program executable (.exe) file. Use this to customize commands assignments for productivity programs.

1. Open Logitech Gaming Software (LGS).
2. Navigate to the Home window for your mouse, keyboard or headset.
3. Select **Customize buttons**, **Customize Function keys** or **Customize G-keys** depending on the device.
4. In the **Profiles** pane, click **Create new profile** ("+").



The **New Profile** window appears:



5. Type distinct names for your profile in the Name and Description boxes.



6. Click “+” and use the Windows Explorer window that appears to navigate to and open your executable (.exe) file.

**NOTE:** You can assign multiple executable files to the same LGS profile.

7. Select the checkbox to **Lock profile while the game is running** to prevent other profiles from becoming active while your game or application is running.
8. If you prefer to use another profile’s lighting, command assignment or pointer settings as a starting point, select the checkbox to **Copy from an existing profile**. Use the drop-down menu to select a profile to copy settings from.
9. Click **OK** to save changes and add the new profile.

**NOTE:** A new profile for the game or application should appear in the Profiles pane.

- [View current profiles in Logitech Gaming Software](#)

To see your current gaming profiles in Logitech Gaming Software (LGS) for your gaming mouse, keyboard or headset:

1. Open Logitech Gaming Software



2. Select your product by using the arrows at the bottom left of the LGS window.
3. Do one of the following, depending upon your device type:

- **Mouse** — click **Customize Buttons** if your mouse is in Automatic Game Detection mode. Click **Customize on-board profile** if your mouse is in On-Board Memory mode.



- **Keyboard** — click Customize Function Keys or Customize G-Keys.

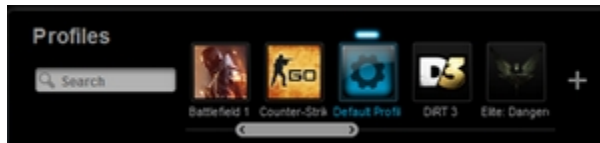




- **Headset** — click Customize G-Keys.



4. The profiles you've created will show in alphabetical order in the Profiles area at the top of the window.



- Digital signature error when Logitech Gaming Software is installed on Windows 7 computers

You may see a digital signature error when you install Logitech Gaming Software (LGS) on some Windows 7 computers. All recent versions of LGS require the following Microsoft Windows security update to be installed prior to installing LGS:

- Security Update for Windows 7 Systems (KB3033929)

The security update adds support for SHA-2 driver signing and verification functionality. There are two versions — one for Windows 7 32-bit (x86) and one for Windows 7 64-bit (x64). Make sure you've downloaded and installed the correct version for your computer before you install LGS.

- Blue screen after G920 racing wheel is attached to USB port or G25/G27 is not recognized

If your computer gives you a blue screen when you connect your G920 wheel or if your PC/games do not recognize your G25/27 wheel, follow the steps below to resolve the issue:

1. Disconnect the Gaming wheel from your computer.
2. Download and save **WheelDriverCleaner.exe** to your desktop.  
(<https://cx-assets.logi.com/Software/Gaming/Wheel%20Driver%20Cleaner/WheelDriverCleaner.exe>)
3. Run the cleaner tool by double-clicking the file from your desktop.
4. Close the cleaner tool dialog box.
5. Reconnect your Gaming wheel to your computer.

- Import racing wheel profiles using Logitech Gaming Software

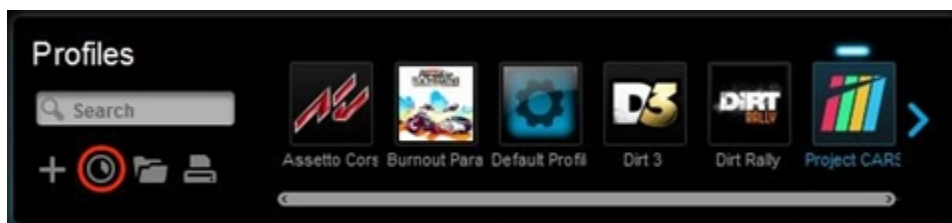
Logitech Gaming Software (LGS) 8.70 and later has preset profiles for hundreds of supported games. When you install and launch LGS for the first time, it will scan your computer's file system and import preset LGS game profiles for you automatically. You can manually rescan to import preset LGS profiles for your new games at any time. You can also manually import (or export) LGS-compatible game profiles.

**NOTE:** Not all Logitech racing wheels are compatible with Logitech Gaming Software 8.70 (or later). Please refer to your racing wheel's product specifications for software compatibility information.

## Scan for new games (Automatic)

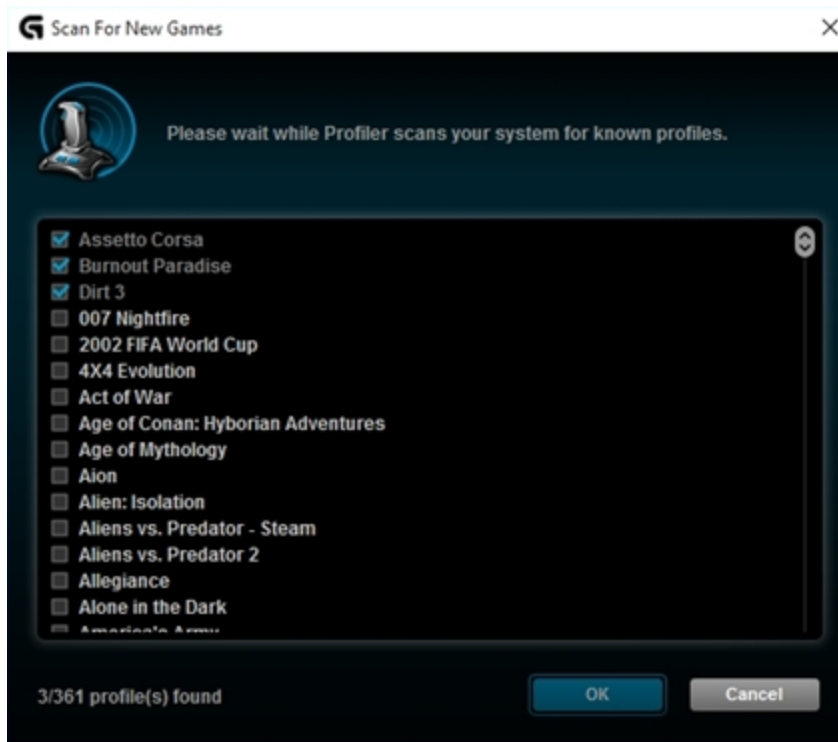
To scan for supported games and automatically import their preset LGS profiles:

1. Make sure that the racing wheel is connected to your computer, and then launch LGS.
2. On the LGS **Home screen**, navigate to the device selector at the bottom of the LGS window and click on the racing wheel's device icon.
3. Navigate to the **Steering Wheel** or **Pedals** screen.
4. Navigate to the **Profiles** area at the top-right corner of the LGS window, then click on the **Scan for New Games** icon.



5. A pop-up window appears while the LGS scans for your installed games. All detected games will be visible at the top of the list – available preset profiles are indicated by a check mark. Newly detected games will be highlighted in blue. All checked games will have preset profiles added to LGS when you click **OK**.

**NOTE:** To add a profile to a game that wasn't detected, find the game that's highlighted in white in the list and then click the associated check box.



6. Click **OK** to finish importing the selected profiles.

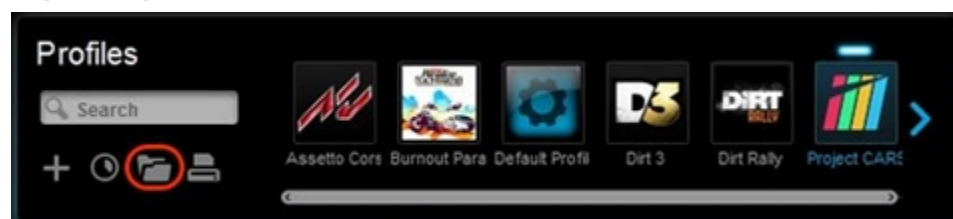
**NOTE:** For any games you've selected manually, make sure that the correct game application file is associated to that profile in LGS. For more information on editing existing profiles, see [Create and edit racing wheel profiles using Logitech Gaming Software](#).

---

## Import/Export (Manual)

To manually import LGS-compatible profiles into LGS:

1. In the **Profiles** area at the top-right corner of the LGS window, click on the **Import/Export** icon.



2. In the pop-up menu, click **Import**.
3. Use the pop-up dialog window to browse your computer's file system and select the LGS-compatible game profile file(s) you wish to import into LGS.

**NOTE:** Only LGS-compatible Game Profile files (.lgp or .xml) are supported.

4. Click **Open** to close the dialog window, and import the selected LGS-compatible profiles into LGS. The new profiles will appear in the profiles list.

**NOTE:** For more information on navigating the list of available profiles in LGS, see [View racing wheel profiles using Logitech Gaming Software](#).

- Set racing wheel profiles to Persistent or Default using Logitech Gaming Software

Logitech Gaming Software (LGS) 8.70 and later has two special profile states for racing wheel profiles:

**Default** — used when no other active profile is detected

**Persistent** — overrides all app-specific profiles

**NOTE:** Not all Logitech racing wheels are compatible with LGS 8.70 (or later). Please refer to your racing wheel's product specifications for software compatibility information.

---

### Set a Default profile

LGS comes pre-installed with a Default profile. LGS uses the Default profile when no other profile is currently running. To assign any profile of your choice to be the Default profile:

1. Make sure that the racing wheel is connected to your computer, and then launch LGS.
2. On the LGS **Home** screen, navigate to the device selector at the bottom of the LGS window and click on the racing wheel's device icon.
3. Navigate to the **Steering Wheel** or **Pedals** screen.
4. Navigate to the Profiles area at the top-right corner of the LGS window, and navigate to the profile you wish to set as Default.

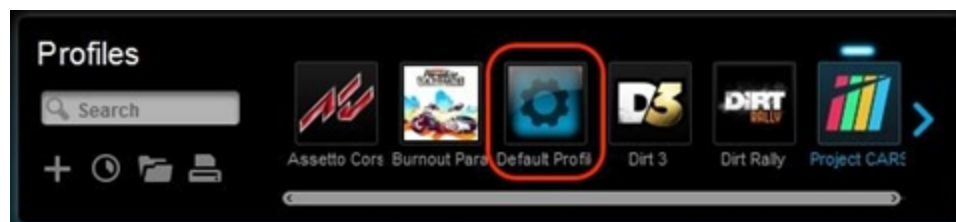
**NOTE:** For more information on navigating the list of available profiles in LGS, see [View racing wheel profiles using Logitech Gaming Software](#).

5. Right-click on the desired profile and click **Set As Default** from the pop-up menu that appears.



The profile will now be set as the default. If you right-click on profile again from the list, there should be a check mark next to **Set As Default** in the pop-up menu that appears. This will be the active profile when no other profiles are running.

**NOTE:** To return to the pre-installed Default profile, follow all of the above steps, making sure to select Default Profile in **step #4**.



### Set a Persistent profile

A Persistent profile is one you manually select to be used for all applications. It will override any application-specific profile assignments. You can use this to troubleshoot poor profile-performance or to simplify the configuration of your racing wheel. To set a profile as Persistent:

1. From the **Profiles** area at the top-right corner of the LGS window, navigate to the profile you wish to set as persistent.

2. Right-click on the desired profile and click **Set As Persistent** from the pop-up menu that appears.



The profile will now be set as the **Persistent profile**. If you right-click on Profile again from the list, there should be a check mark next to **Set As Persistent** in the pop-up menu that appears. This will now act as the active profile whenever an application is launched, overriding any application-specific profile assignments.

**NOTE:** To disable the Persistent profile, follow the above steps, and click on **Set As Persistent** in the pop-up menu that appears. The check mark should disappear and the profile will no longer override other profiles.

- [View racing wheel profiles using Logitech Gaming Software](#)

Logitech Gaming Software (LGS) 8.70 and later organizes all of your available game-specific profiles for quick access.

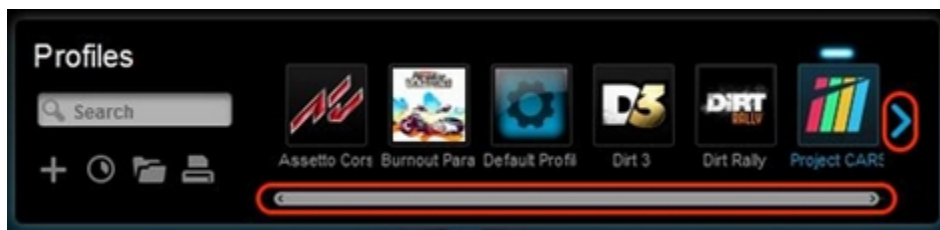
**NOTE:** Not all Logitech racing wheels are compatible with LGS 8.70 (or later). Please refer to your racing wheel's product specifications for software compatibility information.

To view all profiles available for your racing wheel

1. Make sure that the racing wheel is connected to your computer, and then launch LGS.
2. On the **LGS Home screen**, navigate to the device selector at the bottom of the LGS window and click on the racing wheel's device icon.
3. Navigate to the **Steering Wheel** or **Pedals** screen.
4. Navigate to the **Profiles** area at the top-right corner of the LGS window.

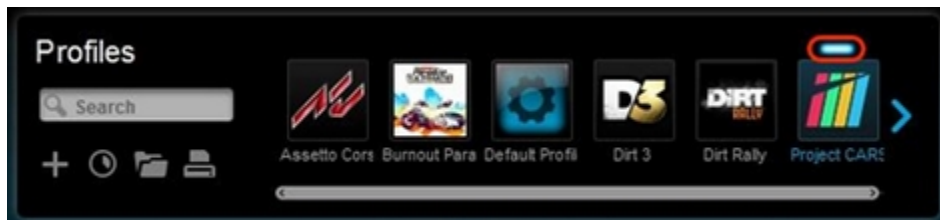


5. Click the arrow(s) or drag the horizontal slider (where applicable) to navigate through the list of available profiles.



**NOTE:** All available profiles are listed horizontally and in alphabetical order.

6. Click to select a profile from the list. The selected profile will be marked with an indicator above the game listing.



**NOTE:** For more information on editing existing profiles, see [Create and edit racing wheel profiles using Logitech Gaming Software](#).



- G920 racing wheel does not respond when connected to Xbox One

If your G920 Driving Force Racing Wheel does not respond properly upon first connection to your Xbox One console, please follow these steps:

1. Disconnect the G920's USB cable from the Xbox One.
2. Press and hold the following three buttons simultaneously:
  - LSB button
  - View button
  - Xbox button



3. While continuing to hold the three buttons, connect the G920's USB cable to the Xbox One.
4. Release all three buttons when the G920 wheel begins calibration.
5. Test the Directional pad (D-pad) on your G920 in the Xbox One home screen to navigate the menu items. This will confirm that the G920 is now responding properly.

- Create and edit racing wheel profiles using Logitech Gaming Software

Logitech Gaming Software (LGS) 8.70 and later can be used to create game-specific profiles for compatible Logitech racing wheels. These profiles allow you to create customized button layouts and wheel/pedal sensitivity configurations for compatible games on your computer.

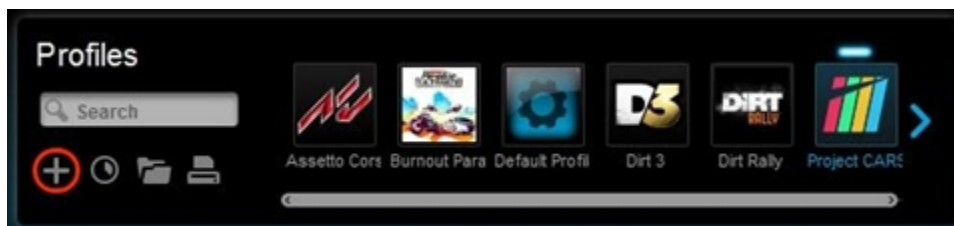


**NOTE:** Not all Logitech racing wheels are compatible with Logitech Gaming Software 8.70 (or later). Please refer to your racing wheel's product specifications for software compatibility information.

- [Create a new profile](#)
- [Edit an existing profile](#)
- [Delete a profile](#)

## Create a new profile

1. Make sure that the racing wheel is connected to your computer, and then launch LGS.
2. On the **LGS Home screen**, navigate to the device selector at the bottom of the LGS window and click on the racing wheel's device icon.
3. Navigate to the **Steering Wheel** or **Pedals** screen.
4. Navigate to the Profiles area at the top-right corner of the LGS window, then click on the **Create New Profile** or "+" icon.



5. In the New Profile pop-up window, enter the following information:

- **Name** — Enter a name for your new profile.
  - **Description** — Add a description for your new profile (optional).
  - **Games and apps that use this profile** — Click the “+” icon to locate and select the game application file (or other desired application files) to be associated with your new profile. Click the “-” icon to remove selected application files from the list.
  - **Lock the profile while this game is running** — Setting this option prevents other applications that are running on your system from disrupting the function of your game profile during gameplay. For more information on locking profiles on your racing wheel, see [Lock racing wheel profile using Logitech Gaming Software](#).
  - **Copy from an existing profile** — Setting this option allows you to create your new profile based on an existing profile in LGS. Click the down arrow and choose the desired profile from the list that appears.
6. Click **OK** to finish setting up your new profile.

---

### Edit an Existing Profile

1. From the **Profiles** area at the top-right corner of the LGS window, navigate to the profile you wish to edit.  
**NOTE:** For more information on navigating the list of available profiles in LGS, see [View racing wheel profiles using Logitech Gaming Software](#).
2. Right-click on the profile you wish to edit, and click **Properties** from the pop-up menu that appears.



3. Apply your desired edits to the profile on the **Profile Properties** pop-up window that appears.
  4. Click **OK** to finish editing your existing profile.
- 

### Delete a Profile

1. From the **Profiles** area at the top-right corner of the LGS window, navigate to the profile you wish to delete.
2. Right-click on the profile you wish to delete, and click **Delete** from the pop-up menu that appears.
3. Click **Yes** on the pop-up confirmation dialog that appears.

- [Program buttons on the G920 racing wheels with Logitech Gaming Software](#)

You can use Logitech Gaming software (LGS) 8.70 and later to assign various commands to the buttons on the G920 racing wheels.

**NOTE:** Make sure you're using the latest version of LGS before you connect your racing wheel to the computer. You can download the latest version of LGS from your racing wheel's support Download page.

- [Default Button Layouts](#)
- [Customizing Buttons](#)
- [Game-Specific Profile Commands](#)
- [Command Editor](#)
- [Resetting Buttons](#)

**NOTE:** Not all Logitech racing wheels are compatible with Logitech Gaming Software 8.70 (or later). Please refer to your racing wheel's product specifications for software compatibility information.

---

## Default Button Layouts

The default button layouts for both the G920 are shown below:

### **G920 default buttons**



## Customizing Buttons

1. Make sure that the racing wheel is connected to your computer, and then launch LGS.
2. On the **LGS Home screen**, navigate to the device selector at the bottom of the LGS window and click on the racing wheel's device icon.
3. Navigate to the **Steering Wheel** screen.
4. Navigate to the specific profile for the buttons you wish to customize.  
**NOTE:** For more information on navigating the list of available profiles in LGS, see [View racing wheel profiles using Logitech Gaming Software](#).
5. Assign a command to a button using one of two main methods:
  - Double-click on the listed button assignment, or on the button itself to begin assigning a new command.

**NOTE:** Double-click on the **D-Pad** to assign up to 8 distinct commands.

- Drag and drop an existing command from the **Commands** list on the left of the LGS window onto a button. When you drag a command over a button, the button will become highlighted.

**NOTE:** The D-Pad cannot be assigned a single command by dragging a command from the Command List.

6. Alternatively, you can right-click on a button or its assignment for additional options:

**NOTE:** Grey-colored text menu items are not accessible.



- **Assign New Command** — Click on this option to open the **Command Editor** window.
- **Edit Command** — Click on this option to open the **Command Editor** window.
- **Use Generic** — Click on this option to return the selected button assignment to its generic function.
- **Unassign** — Click on this option to remove all assignments from the selected button.

---

## Customizing Buttons

1. Make sure that the racing wheel is connected to your computer, and then launch LGS.

2. On the **LGS Home screen**, navigate to the device selector at the bottom of the LGS window and click on the racing wheel's device icon.

3. Navigate to the **Steering Wheel** screen.

4. Navigate to the specific profile for the buttons you wish to customize.

**NOTE:** For more information on navigating the list of available profiles in LGS, see [View racing wheel profiles using Logitech Gaming Software](#).

5. Assign a command to a button using one of two main methods:
  - Double-click on the listed button assignment, or on the button itself to begin assigning a new command.

**NOTE:** Double-click on the **D-Pad** to assign up to 8 distinct commands.

  - Drag and drop an existing command from the **Commands** list on the left of the LGS window onto a button. When you drag a command over a button, the button will become highlighted.

**NOTE:** The **D-Pad** cannot be assigned a single command by dragging a command from the Command List.

6. Alternatively, you can right-click on a button or its assignment for additional options:

**NOTE:** Grey-colored text menu items are not accessible.



- **Assign New Command** — Click on this option to open the **Command Editor** window.
- **Edit Command** — Click on this option to open the **Command Editor** window.
- **Use Generic** — Click on this option to return the selected button assignment to its generic function.

- **Unassign** — Click on this option to remove all assignments from the selected button.

---

## Game-Specific Profile Commands

LGS can be used to create new or import LGS preset game profiles for compatible Logitech racing wheels. These profiles allow you to create customized button layouts and wheel/pedal sensitivity configurations for compatible games on your computer.

- For more information on creating and editing profiles, see [Create and edit racing wheel profiles using Logitech Gaming Software](#).
- For more information on importing LGS preset profiles, see [Import racing wheel profiles using Logitech Gaming Software](#).

---

## Command Editor

You can customize button command assignments on your racing wheel using the Command Editor.

1. Double-click on either an unassigned or assigned button to open the **Command Editor**. You can create or edit a command using the following customization options:
  - **Keystroke** — Assign a single key press, or a key press with modifiers.
  - **Multi Key** — Assign a "macro'd" series of keystrokes (either with or without recorded time delays).
  - **Text Block** — Create a block of text to be typed out when the button is pressed (either with or without Unicode support).
  - **Mouse Function** — Assign a button to use any of the available mouse button functions.
  - **Media** — Set a button to control media playback or volume functions.
  - **Hotkeys** — Use a predefined keystroke command.
  - **Shortcut** — Assign a button to launch a file/folder/drive on your computer.
  - **Function** — Assign a button to act like a Microsoft function button (*ex. to open your web browser*).

- **Ventrilo** — Assign a button to have a function in Ventrilo, if Ventrilo is installed on your computer.
2. Click **OK** to assign the desired command to the button. The command's name will be visible over that button in the **Steering Wheel** screen.
- 

### Resetting buttons

To reset a single button command assignment:

1. From the **Steering Wheel** screen, navigate to the **Profiles** area at the top-right corner of the LGS window.
2. Navigate to the specific profile for the button you wish to reset.
3. Right-click on the button you wish to reset and select one of the following options from the pop-up menu that appears:
  - **Use Generic** — Click on this option to revert the selected button assignment to its generic function.
  - **Unassign** — Click on this option to remove all assignments from the selected button.

**NOTE:** You can also remove all assignments by dragging the current command from the button to the trash icon (located at the bottom-right corner of the Commands list).

To reset all button command assignments:

1. From the **Profiles** area at the top-right corner of the LGS window, navigate to the profile for which you wish to reset all button assignments.
2. Right-click on the profile and click **All G-keys** from the pop-up menu that appears.
3. Select one of the following options from the next pop-up menu that appears:





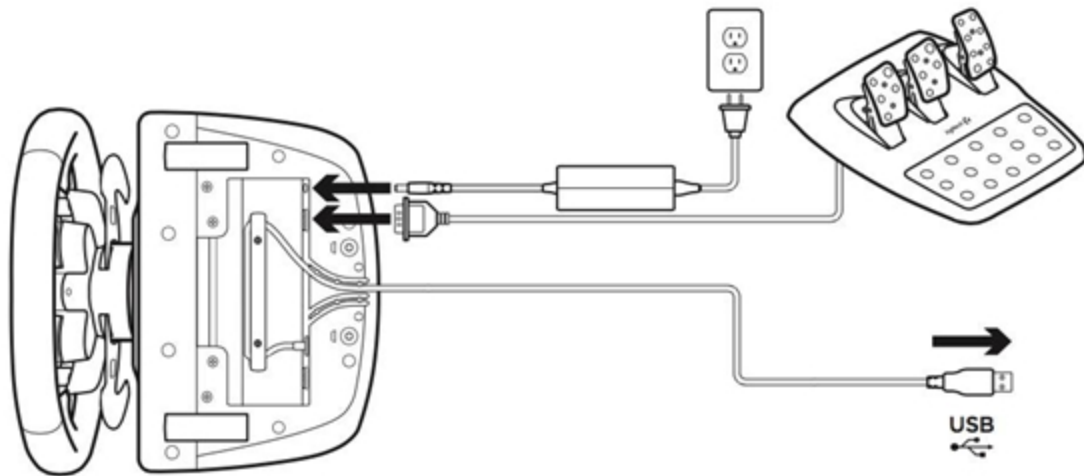
**NOTE:** Gray-colored text menu items are not accessible.

- **Use Generic** — Click on this option to revert the command assignments for all buttons to their generic functions.
- **Unassign** — Click on this option to remove all command assignments from all buttons.
- Pedals on the G920 racing wheel do not respond

If the pedals on your pedal unit don't respond, please use the following steps to troubleshoot the problem:

1. Confirm that the wheel unit is properly connected to power. The connection port is located on the underside of the wheel unit (as shown below).
2. Confirm that the pedal unit is connected to the wheel unit. The connection port (DB-9 female) is located on the underside of the wheel unit (as shown below).
3. Confirm that the wheel is connected via USB to the game console or PC (as shown below). Once connected to your game console or PC, the wheel will rotate fully to each side and then to the center to calibrate.

**NOTE:** If connected to a PC, make sure that you've installed Logitech Gaming Software 8.70 or later.



4. Confirm that the pedals are properly mapped to the pedal functions in the game's control options or settings, and in Logitech Gaming Software (where applicable).

**NOTE:** Some games may invert pedal controls. Make sure to map pedal functions accordingly in the game's control options or settings.

- Lock racing wheel profile using Logitech Gaming Software

Logitech Gaming Software (LGS) 8.70 and later works with your computer's operating system to detect your "top" application, which is usually the game you're playing. Unfortunately, antivirus software and other utilities may jump to the top at any time and disrupt the functionality of your game profile. If your profile stops functioning, you can lock it in LGS. A locked profile will remain active regardless of the new "top" application detected.

**NOTE:** Not all Logitech racing wheels are compatible with Logitech Gaming Software 8.70 (or later). Please refer to your racing wheel's product specifications for software compatibility information.

To lock a profile:

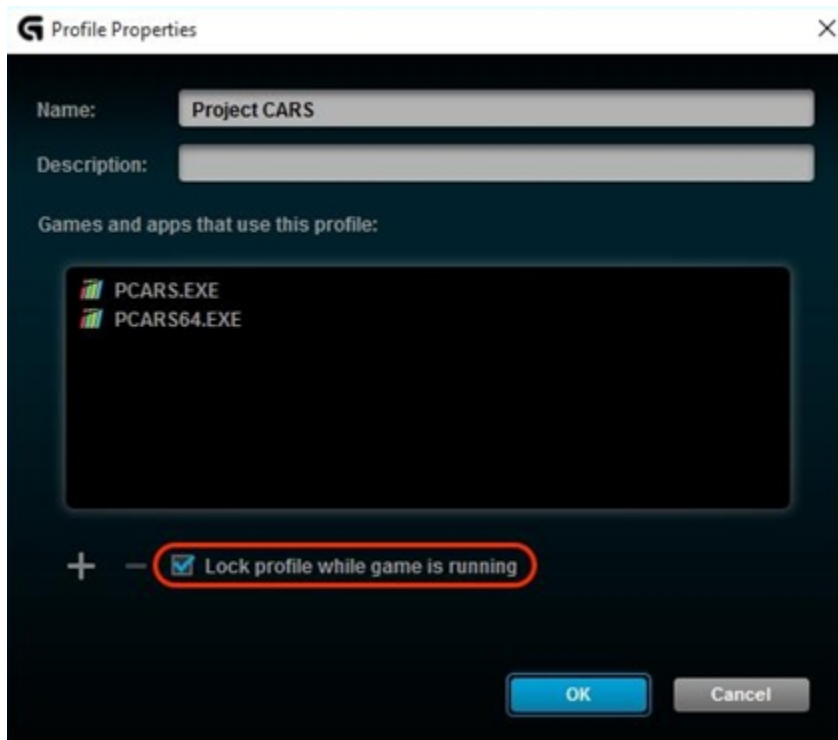
1. Make sure that the racing wheel is connected to your computer, and then launch LGS.
2. On the **LGS Home screen**, navigate to the device selector at the bottom of the LGS window and click on the racing wheel's device icon.
3. Navigate to the **Steering Wheel** or **Pedals** screen.
4. Navigate to the **Profiles** area at the top-right corner of the LGS window, and navigate to the profile you wish to lock.

**NOTE:** For more information on navigating the list of available profiles in LGS, see [View racing wheel profiles using Logitech Gaming Software](#).

5. Right-click on the profile you wish to lock and click **Properties** from the pop-up menu that appears.



6. Check **Lock the profile while the game is running**.



7. Click **OK** to save the setting.

**NOTE:** The profile will now be locked while the specific game is running. This means your profile will remain active even if other applications activate while you're playing.

- Mounting templates for the G920 racing wheel

The G920 racing wheels come equipped with bolt mounting points on the bottom of the wheel and pedals units. This allows you to attach them to a surface with M6X1 screws.

Please click on the appropriate links below for the mounting templates.

- Wheel Unit Bolt Template: [logitech.com/assets/53963/templates.pdf](https://logitech.com/assets/53963/templates.pdf)
- Pedal Bolt Template: [logitech.com/assets/53963/2/templates.pdf](https://logitech.com/assets/53963/2/templates.pdf)

For more information on how to mount and secure the G920 racing wheels using bolts, see [Mount and secure the G920 racing wheel using built-in bolt mounting points](#).

**NOTE:** You can also use the clamping system on the G920 to secure the wheel and pedal units. For more information, see [Mount and secure the G920 racing wheel using the clamping system](#).

- Mount and secure the G920 racing wheel using the clamping system
  - [Wheel Unit](#)
  - [Pedal Unit](#)
  - [Cable Management](#)

**NOTE:** For details on mounting the G920 racing wheels using bolts, see [Mount and secure the G920 racing wheel using built-in bolt mounting points](#).

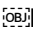
---

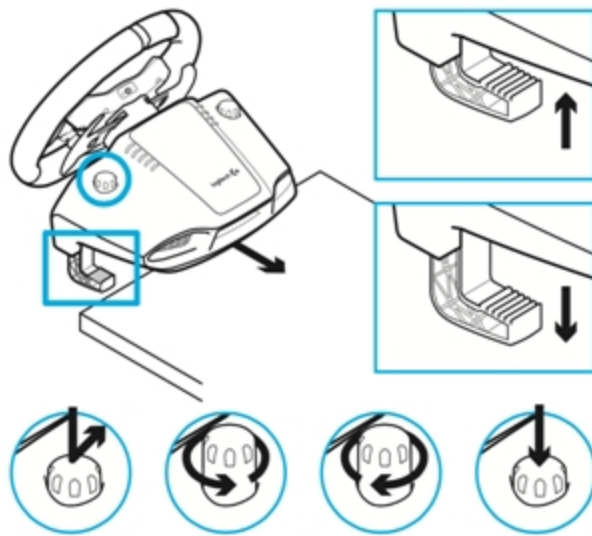
## Wheel Unit

G920 racing wheels are equipped with a built-in clamping system that can be mounted to a table or desk, or mounted to a racing rig using built-in bolt mounting points.

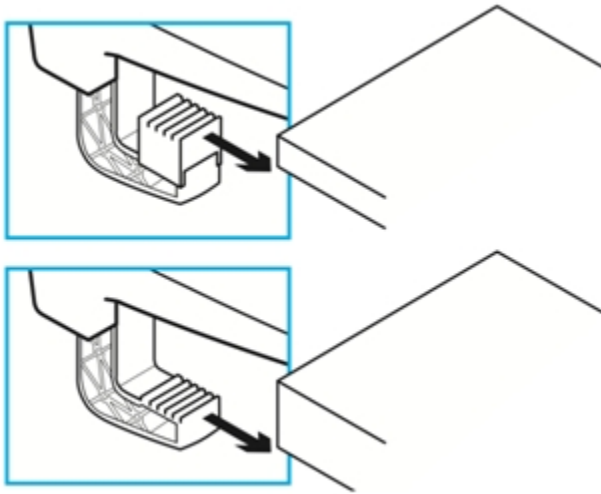
**NOTE:** Before mounting and securing the wheel unit, make sure to connect the power adapter, pedal unit, and Driving Force Shifter attachment (where applicable) to the connection ports on the underside of the wheel unit. See the [Cable Management](#) section for details.

To use the clamping system to mount the wheel unit:

1.  Push down and then rotate the clamp knobs to lock or unlock.
2. Rotate the clamp knobs to tighten or loosen clamps.

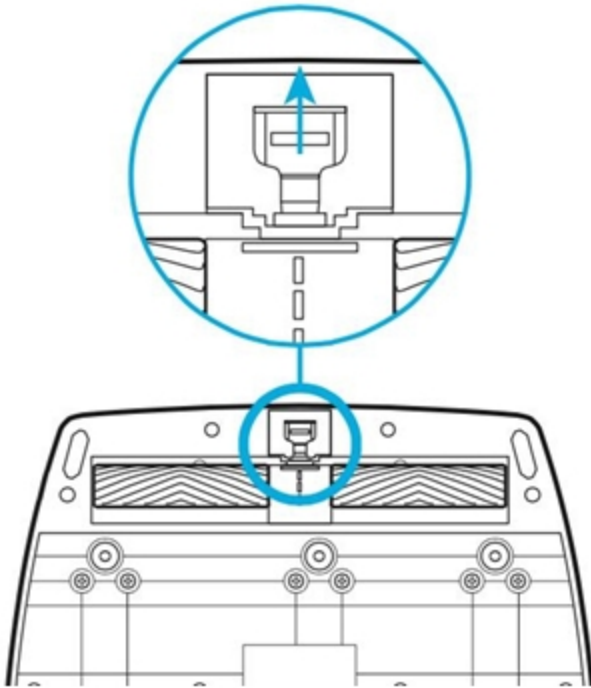


**NOTE:** You can use the included clamp extenders for thinner tables. The clamp extenders should be removed before mounting the wheel unit to thicker tables or desks.



### Pedal Unit

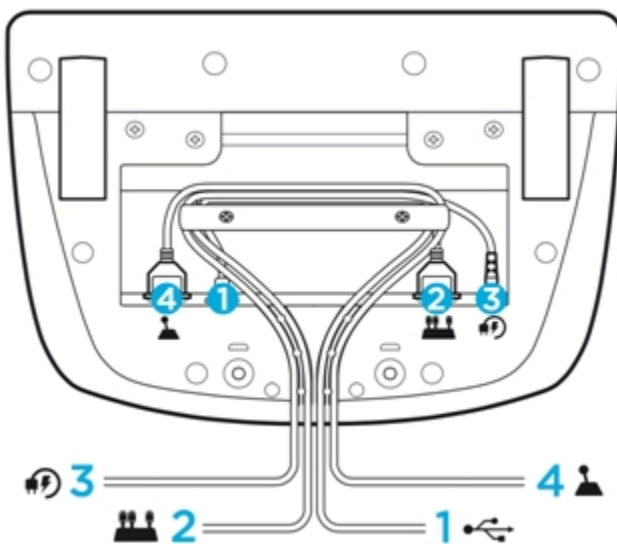
The pedal unit can be placed on the floor or mounted to a racing rig using built-in bolt mounting points. The retractable carpet grip system increases the unit's traction when placed on carpets. Push the retaining clip towards the rear of the pedal unit to release the grip system. Push the carpet grip into the unit until it clicks to retract.



### Cable Management

For optimal cable routing, USB and pedal cables (1, 2) should be routed through the inner channels. The power and optional shifter cables (3, 4) should be routed through the outer channels.

Cables may be wrapped multiple times around cable management cleats to take in slack.



- [Adjust sensitivity on the G920 racing wheels with Logitech Gaming Software](#)

Steering wheel and pedal response can be adjusted on the G920 racing wheels using Logitech Gaming Software (LGS). Before you attempt to make these adjustments, make sure to download and install the latest version of LGS before connecting the G920 racing wheel to your computer. You can get the latest version of LGS from your product's Download page.

**NOTE:** Not all Logitech racing wheels are compatible with Logitech Gaming Software 8.70 (or later). Please refer to your racing wheel's product specifications for software compatibility information.

- [Steering Sensitivity](#)
  - [Wheel Operating Range](#)
  - [Pedal Sensitivity](#)
- 

### Steering Sensitivity

Steering sensitivity on the G920 racing wheels can be adjusted to accommodate your steering preferences, or improve steering response in some games.

**NOTE:** Adjustments to steering sensitivity can be customized for each game, per profile in LGS.

To adjust the steering sensitivity:

1. Make sure that the G920 racing wheel is connected to your computer, and then launch LGS.
2. On the **LGS Home screen**, navigate to the device selector at the bottom of the LGS window and click on the **G920** icon.
3. Navigate to the **Steering Wheel** screen, then double-click on the area marked **Steering Wheel**.



4. Drag the slider to set Steering Sensitivity to the desired percentage. Click the **Default** button to return the steering sensitivity to the default value of 50%.



5. Click **OK** to confirm the setting and return to the **Steering Wheel** screen.

### Wheel Operating Range

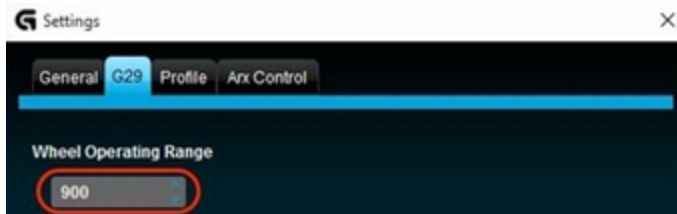
The G920 racing wheels allow for maximum lock-to-lock rotation of up to 900 degrees. Some games may require this range to be reduced in order to provide optimal steering response in those games.



**NOTE:** This setting is global and will universally affect the wheel operating range for all games.

To adjust the wheel operating range:

1. Make sure that the G920 racing wheel is connected to your computer, and then launch LGS.
2. Navigate to LGS Settings, then click on the tab named "**G920**."
3. Change the **Wheel Operating Range** to the desired degree range.



**NOTE:** The operating range can be adjusted between 40 and 900 degrees, in 10 degree increments. The default setting is 900 degrees.

4. Click **OK** to confirm the setting and close the Settings window.
- 

### Pedal Sensitivity

Pedal sensitivity on the G920 racing wheels can be adjusted to accommodate your pedal engagement preferences, or to improve clutch, brake, or accelerator pedal response in some games.

**NOTE:** Adjustments to pedal sensitivity can be customized for each game, per profile in LGS.

To adjust the pedal sensitivity:

1. Make sure that the G920 racing wheel is connected to your computer, and then launch LGS.
2. In the **LGS Home screen**, click on the **G920** icon.
3. Navigate to the Pedals screen, then double-click on either the Clutch, Brake or Accelerator pedals. In this example, the **Accelerator pedal** will be selected.



4. Drag the slider to set the Pedal Sensitivity for the selected pedal to the desired percentage. Click the **Default** button to return the pedal sensitivity to the default value of 50%.



5. Click **OK** to confirm the setting and return to the Pedals screen.

- Clutch pedal on the G920 racing wheel does not function properly

G920 clutch pedal functionality is only supported on Xbox One and PC.

**NOTE:** The Driving Force Shifter attachment is required to make proper use of the G920 clutch pedal.

If your G920 clutch pedal isn't working properly, please check the following:

- Refer to the game's compatibility information to find out if the game supports clutch pedal functionality for the G920. Clutch pedal support must be provided by the developer of the game, and not all games include this support.
- Some games may invert clutch pedal controls, or they may not be mapped correctly. Verify the pedal settings using the game's control options, and in Logitech Gaming Software (where applicable).
- If you've confirmed that the clutch pedal is supported by a game and it's still not working, see [Pedals on the G920 racing wheel do not respond](#).

- Force feedback turns off intermittently on G920 racing wheel

The G920 racing wheels have dual motors that provide force feedback on supported games and systems. Both products contain an overheat protection circuit to safeguard them under high-temperature operating conditions.

In rare instances, force feedback features may shut down during use, while the controls continue to operate. If this happens, allow the wheel to cool down by using the following steps:

1. Disconnect the wheel unit's power adapter from the power source.
2. Disconnect the wheel unit's USB connection from the game console or PC.

- No force feedback when using the G920 racing wheel on a PC

If your G920 racing wheel does not exhibit any force feedback during gameplay on your PC, check the following:

- Make sure that you've installed the latest version of Logitech Gaming Software (LGS). Both the G920 racing wheels require LGS to be installed on your PC for force feedback to function.
- Confirm that the steering functions (including force feedback) are properly mapped in the game's control options or settings, and in Logitech Gaming Software (where applicable).

- Supported gaming console systems for the G920 racing wheel

The G920 racing wheel is supported on the following gaming consoles:

- Xbox One

- Mount and secure the G920 racing wheel using built-in bolt mounting points
  - [Wheel Unit](#)
  - [Pedal Unit](#)
  - [Cable Management](#)

**NOTE:** For templates for do-it-yourself surface mounting projects, see [Mounting templates for the G920 racing wheel](#).

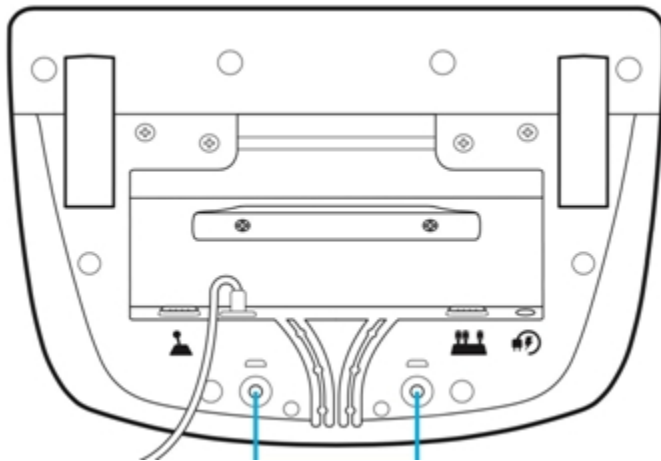
---

### Wheel Unit

G920 racing wheels are equipped with built-in bolt mounting points that can be used to secure the wheel unit to a racing rig, such as a racing seat, cockpit, or wheel stand.

Before mounting and securing the wheel unit, make sure to connect the power adapter, pedal unit, and Driving Force Shifter attachment (where applicable) to the connection ports on the underside of the wheel unit. See the [Cable Management](#) section for details.

To mount the wheel unit to a racing rig using the bolt mounting points, you'll need two (2) M6X1 screws to securely fasten the wheel unit to the racing rig.



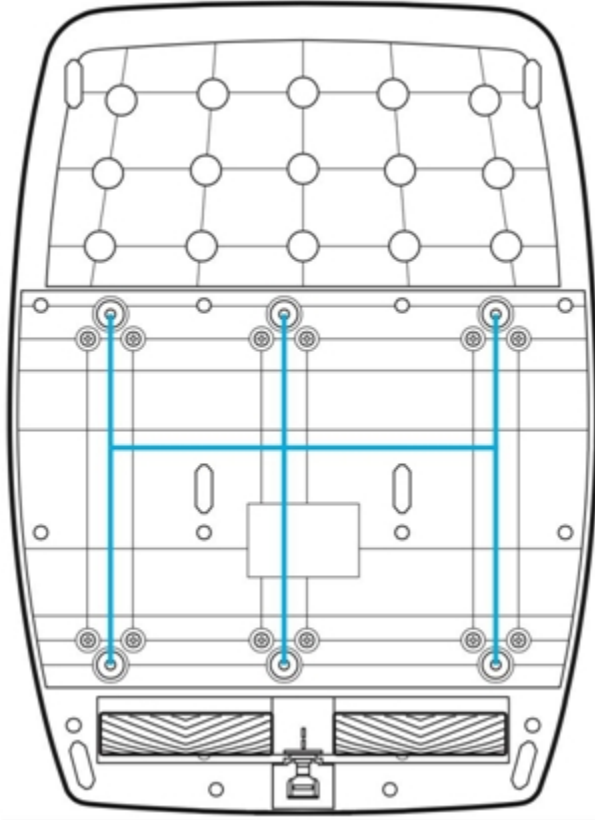
**NOTE:** Bolt mounting may also be supplemented with the built-in clamping system (where applicable). For more information on using the clamping system, see [Mount and secure the G920 racing wheel using the clamping system](#).

---

### Pedal Unit

The pedal units on the G920 racing wheels are also equipped with built-in bolt mounting points that can be used to secure the pedal unit to a racing rig.

To mount the pedal unit to a racing rig using the bolt mounting points, you'll need six (6) M6X1 screws to securely fasten the pedal unit to the racing rig.

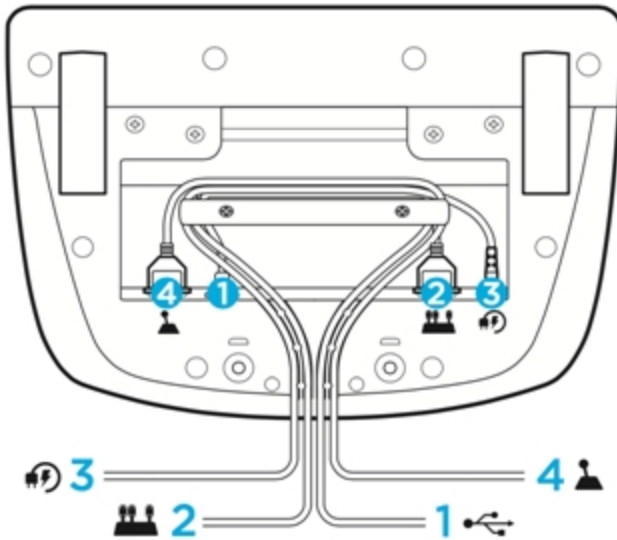


---

### Cable Management

For optimal cable routing, USB and pedal cables (1, 2) should be routed through the inner channels. The power and optional shifter cables (3, 4) should be routed through the outer channels.

Cables may be wrapped multiple times around cable management cleats to take in slack.



- [Supported PC operating systems for the G920 racing wheels](#)

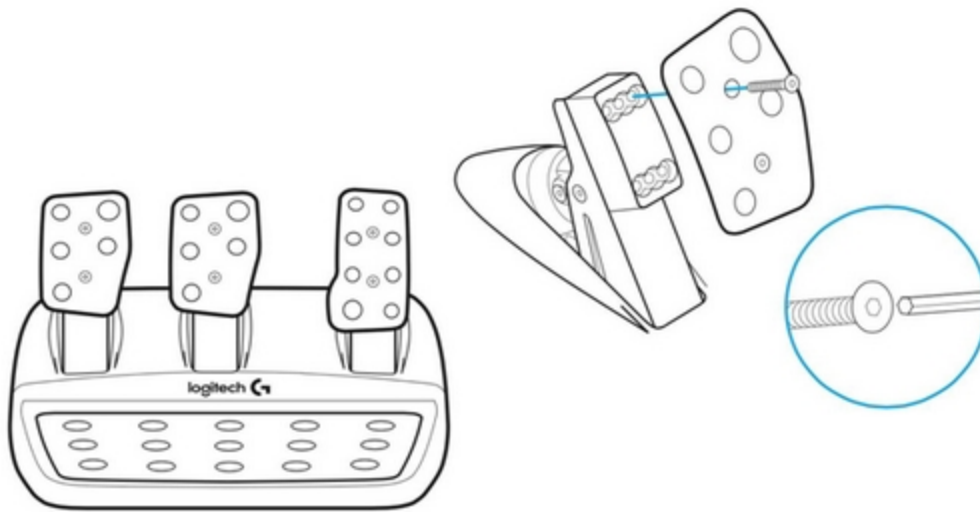
At the time of release, the G29 and G920 racing wheels are supported on the following operating systems:

- Windows 10
- Windows 8.1
- Windows 8
- Windows 7
- Windows Vista

**NOTE:** Logitech Gaming Software (LGS) 8.70 or later must be installed on your computer for the G29 and G920 racing wheels to have full functionality. Once you've installed LGS, all buttons and accessories will function in the games that support them. Please see your product's Download page to get the latest version of LGS.

- [Optimize pedal face positions on the G920 racing wheel](#)

You can adjust the position of the pedals to the left or right using a 2.5mm hex key. This can help with heel-toe maneuvers or to improve driving comfort.



- [Logitech G HUB - FAQs](#)

**VIDEO:** [youtu.be/a5a4iAhTaho](https://youtu.be/a5a4iAhTaho)

## About G HUB

See the following link for more information:

[support.logi.com/hc/en-us/articles/4461144061975-Logitech-G-HUB-FAQs](https://support.logi.com/hc/en-us/articles/4461144061975-Logitech-G-HUB-FAQs)

## WARRANTY – G920 Driving Force Racing Wheel

[2 year limited hardware warranty](#)

See Terms of Use here: [logitech.com/en-my/tos/terms.html?id=3101](https://logitech.com/en-my/tos/terms.html?id=3101)

At Logitech, it is our goal to ensure you are completely satisfied with your Logitech purchase. We take pride in the products and services we offer, and want our customers to enjoy them just as much as we do. If you are experiencing an issue, please click on the following link to learn more about the Logitech warranty.

Check our Logitech Warranty here:

[support.logi.com/hc/en-us/articles/360023361413-Warranty-FAQ-AMR-AP](https://support.logi.com/hc/en-us/articles/360023361413-Warranty-FAQ-AMR-AP)

## CONTACT US

Would you like to speak with us? We're here to help.

Get 24/7 live support with chat here: [logitech.com/support](https://logitech.com/support)

Phone: (Local) +1 646-454-3200

(Toll Free) +1 866-632-5644

Monday – Friday:

**9:00 a.m. – 9:00 p.m. Eastern Time**

## DOWNLOAD

See here to download G Hub:

[download01.logi.com/web/ftp/pub/techsupport/gaming/lghub\\_installer.zip](https://download01.logi.com/web/ftp/pub/techsupport/gaming/lghub_installer.zip)