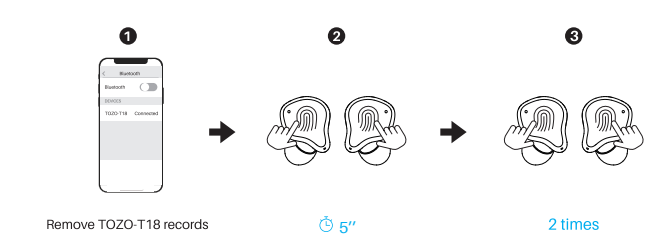


11.0 Reset

If one or both earbuds fail to play audio or pair to device, follow these instructions to reset the earbuds:

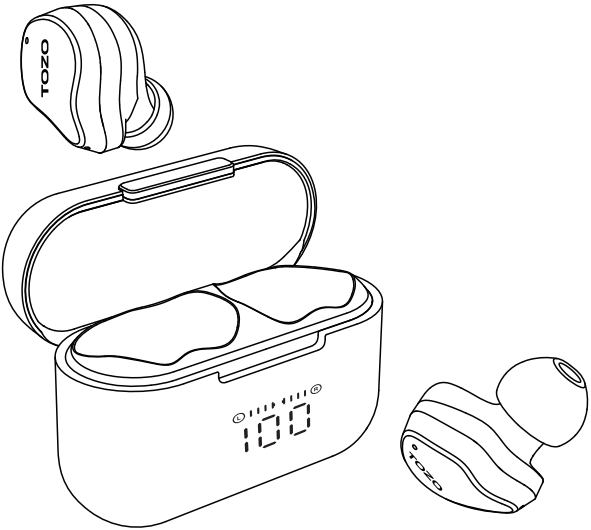
1. Turn off the bluetooth from mobile phone and delete/forget all [TOZO T18] bluetooth records. Take earbuds out from the charging case, press the touch panel for 5 seconds to turn the earbuds off.
2. Press and hold the touch panel for about 5 seconds, the earbuds will enter to pairing state (orange/white light flashes alternately).
3. Tap the touch panel twice rapidly, the white light ?ashes rapidly, after TWS paired successfully, white/orange light flash alternately on one earbud, no light on the other.



12.0 Observation indicators

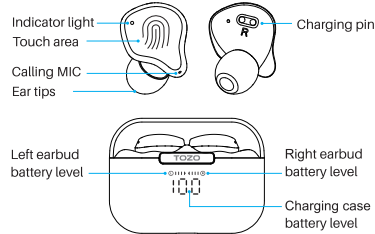
| Model | Indicator status |
|---|---|
| Power on | White light is on for 1 second |
| Power off | Orange light is on for 1 second |
| Bluetooth pairing (Mobile phone/Other device) | Pairing status: Orange and white lights flash alternately |
| Incoming call | White light flashes rapidly |

Thank you for purchasing the TOZO authentic product.
For more latest products, parts and accessories,
please visit: www.tozostore.com
For any assistance please contact Email: info@tozostore.com



T18 TRUE WIRELESS STEREO
User Manual

1.0 Earbuds function diagram

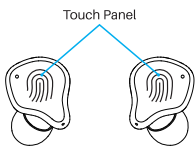


The package contains T18 earbuds, a charging case, 5 size of ear tips(the M size ear tips are pre-installed on the earbuds), Type-C charging cable, user manual, and quick guide.

| | | |
|--|-----------------------|----|
| | Tips | ×5 |
| | Charging case | ×1 |
| | Type-C charging cable | ×1 |
| | Quick guide | ×1 |
| | User manual | ×1 |

2.0 Touch control diagram

The touch area (MFB Touch Panel) is located in the center of earbuds handle.



3.0 Auto power on/off

Auto power on
The earbuds will turn on automatically when the charging case is opened.

Auto power off
The earbuds will turn off automatically when the charging case is closed.

Other way to turn on
Press and hold the touch area for 3 seconds to turn on when the earbuds are turned off.

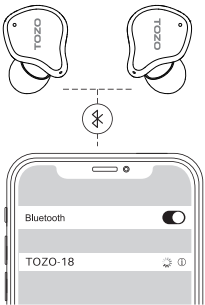
Other way to turn off
Press and hold the touch area for 5 seconds to turn off when no music is playing.

4.0 How to pair

1. Open the charging case. The earbuds will automatically power on and connect to each other within 10 seconds.
2. Search for pairing name [TOZO - T18] and click on it.

5.0 Bluetooth tips

1. The earbuds will automatically pair and connect to the most recently paired device when removed from the charging case, if the device is available.
2. A single earbud(Left or Right) can also be used. If you want to use both earbuds, simply take out the other earbud and earbuds will automatically pair.
3. The earbuds will automatically turn off when being unpaired for 5 minutes.
4. If the earbuds fail to connect to a previously used device, please unpair the earbuds from the device and try again.

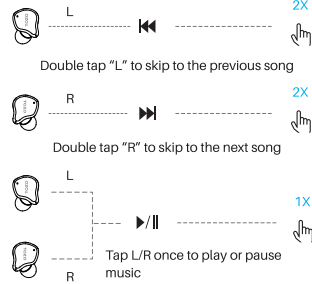


6.0 Specifications

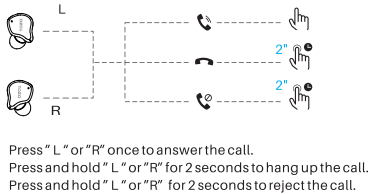
| | |
|--------------------------------|---------------|
| Model | T18 |
| Earbuds | 50mAhx2 |
| Charging case battery capacity | 470mAh |
| Charging time of earbuds | 1.5H |
| Impedance | 16 ± 15% |
| Charging time of charging case | 1.8H (± 20%) |
| Frequency range | 20Hz~20,000Hz |
| Music play time | 8H |
| Calling time | 5H |
| Charging port | Type-C |

7.0 Music operation

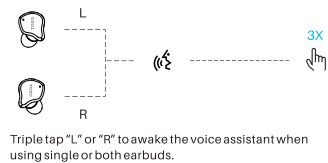
(Operation in wearing of both earbuds)



8.0 Calling control

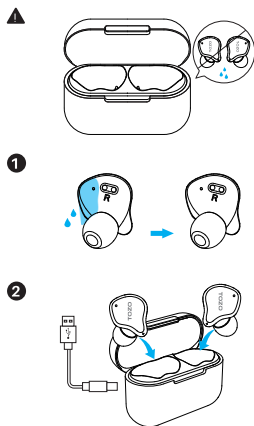


9.0 Voice assistant



10.0 Charging

Place earbuds in charging case to charge automatically. Ensure that earbuds are always completely dry before charging.



Low Battery Alarm (Remind once every minute)

When the earbuds have been removed from the charging case, opening the case will display the battery level of the charging case for 5 seconds. When the earbuds are placed inside the charging case, the case will display the battery level for both earbuds and the charging case for 5 seconds.