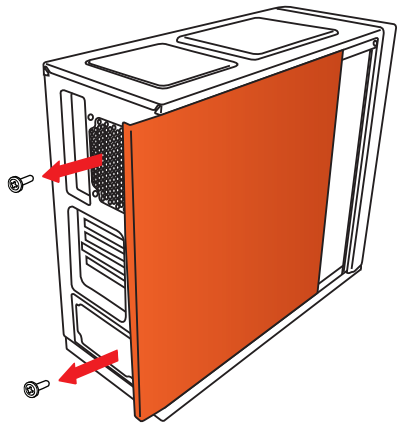


CYBERPOWERPC takes great pride in delivering you a high quality product so please follow the steps below to ensure your system is properly prepared for operation before turning on your computer.

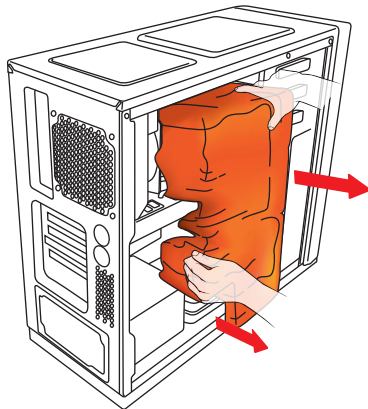
## Step 1 Packaging Foam Removal

(If Installed With Your Purchase)

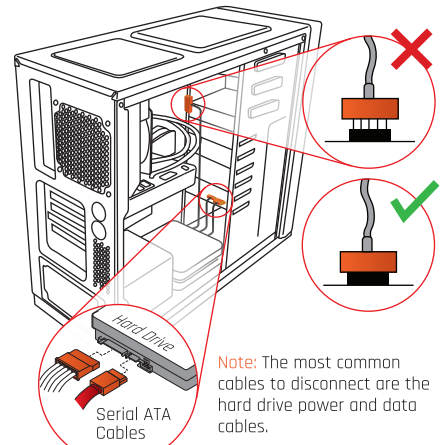
Some systems may include a protective foam inside the case that **must be removed** before turning on the computer.



**Remove** screws from left side panel and remove the panel.



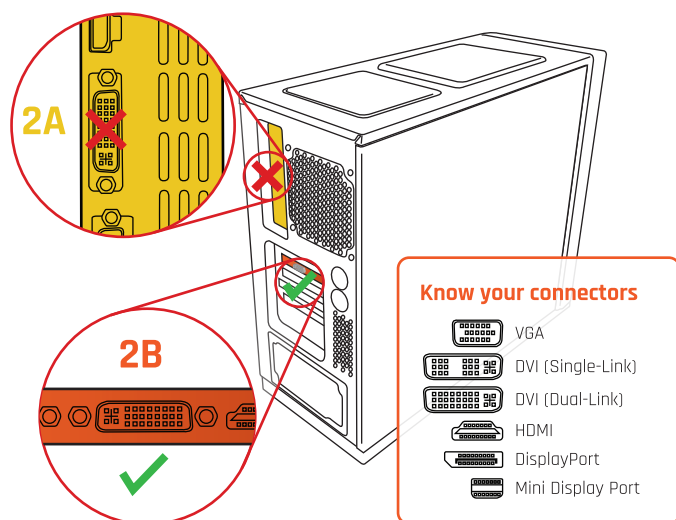
**Always** carefully remove the protective foam before turning on.



**Inspect** all cables to ensure none were disconnected during shipping.

## Step 2 Connecting your display

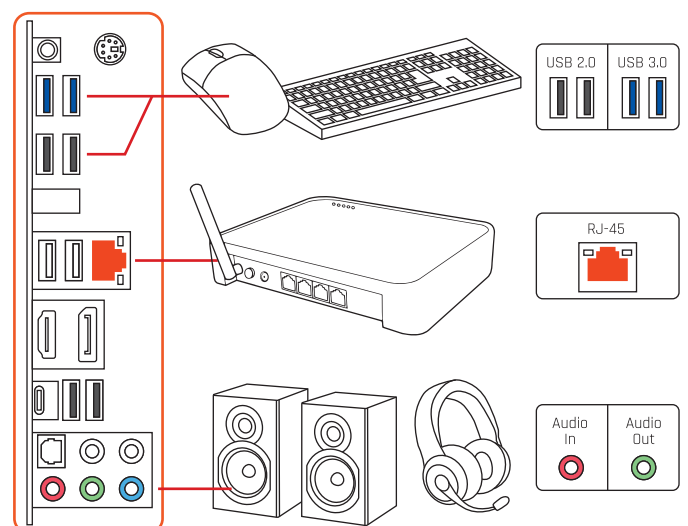
**Most** systems will have a add-on graphics card, please see below to identify which monitor connector you should be using.



**Always** connect your display to the ports at **2B**, however, if you don't have connectors there then use the connectors at **2A**.

## Step 3 Connecting Your Peripherals

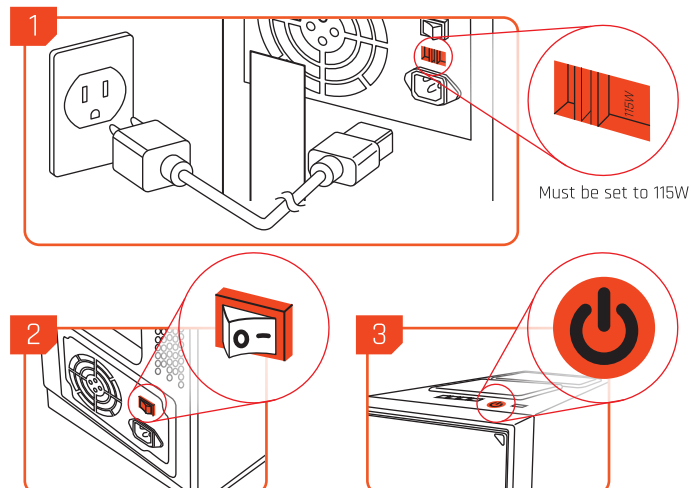
Connect your peripherals such as your mouse, keyboard, speakers, headset and network to the appropriate ports.



**Note** most peripherals today are color coordinated so when in doubt match the color of the connectors together with the matching ports on the system.

## Step 4 Powering on your system

Use the included power cord and connect the cable to your system's power supply and the other end to a wall outlet.



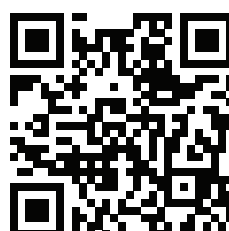
**Remember** you may need switch on the system's power supply first before you can power on your computer with the front power button. (fig.2)

## Frequently asked questions

Most questions can be solved in detail on our official online **CyberPowerPC Help Center** which you can visit at <http://support.cyberpowerpc.com>

The support center can help you with the following:

- Online Support Contact Form
- Live Chat Help
- Drivers & Software
- Product Registration
- Technical Knowledge Base
- General Questions & Answers
- Warranty Information



Scan this to visit the support page now

# IMPORTANT READ THIS FIRST

## QUICK START GUIDE



### CONTACT US

#### Customer Service & Technical Support

Mon-Fri 8:30am - 6:00 pm (PST)  
Sat 9:30am - 3pm (PST)

If purchased at  
[cyberpowerpc.com](http://cyberpowerpc.com)

888-900-5180  
[techsupport@cyberpowerpc.com](mailto:techsupport@cyberpowerpc.com)

If purchased at  
other retailers

888-937-5582  
[techteam@cyberpowerpc.com](mailto:techteam@cyberpowerpc.com)

Want answers quick?  
Find it on our Help Center  
<http://support.cyberpowerpc.com>

#### CYBERPOWERPC

730 Baldwin Park Blvd  
City of Industry,  
CA 91746

### Compliance Information Statement

Responsible Party: CYBERPOWER INC.  
Address: 730 Baldwin Park Blvd  
City of Industry, CA 91746  
Telephone: 626-813-7730  
Fax: 626-813-3810  
Type of Equipment: Computer  
Model Name: C Series

### Federal Communications Commission Notice:

This device complies with Part 15 of the FCC Rules.

Operation is subject to the following two conditions:  
(1) This device may not cause harmful interference, and  
(2) This device must accept any interference received,  
including interference that may cause undesired operation.

The above modeled computer was assembled employing modular CPU boards and power supplies. The list below lists the manufacturer name and manufacturer model number of said part used in the assembly of the computer. The original part manufacturer's Declaration of Conformity can be found in the original part's instructions manual or can be provided upon request.

Modular components used in assembly:

└	└
└	└