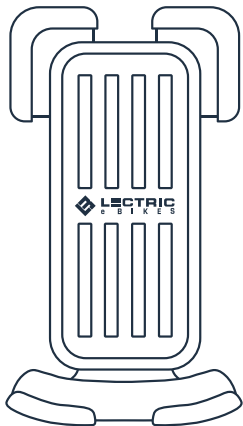
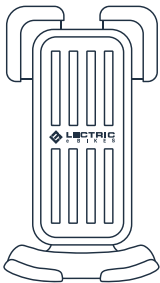


PHONE MOUNT INSTRUCTIONS



LECTRIC
e B I K E S

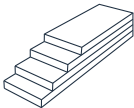
PACKING LIST



**PHONE
HOLDER**

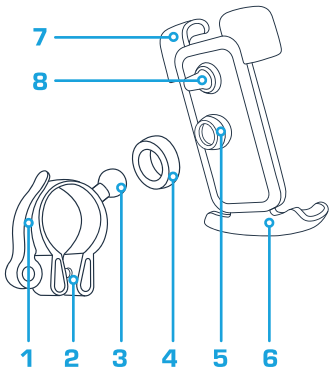


**FIXED
CLAMP**



**SILICONE
PADS (6)**

PARTS

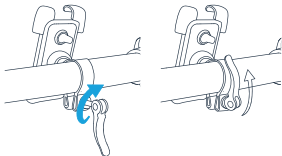


- 1** Lock Lever
- 2** Fixed Clamp
- 3** Joint Ball
- 4** Nut

- 5** Socket
- 6** Lower Arm
- 7** Upper Arm
- 8** Red Switch

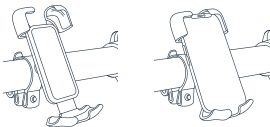
STEP 3

Tighten the screw and press the lever towards the fixed clamp to LOCK 🔒



STEP 4

Make sure the red switch on the back is set to the UNLOCK 🔓 side. Use your phone to push the lower arm of the phone holder down and set your phone in place.



STEP 5

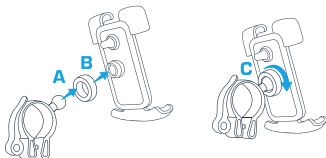
Click the red switch on the back to LOCK 🔒



HOW TO USE

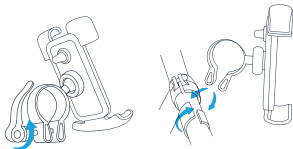
STEP 1

Unscrew the nut and place the nut around the joint ball. Press the joint ball into the socket on the phone holder until it securely snaps in place. Then, tighten the nut.



STEP 2

Loosen the fixed clamp and mount it on the handlebars.



NOTE

Add or remove the silicone pads, and cut the extra material according to the diameter of the handlebar.



LECTRIC
e B I K E S