

Accessing other manuals

The *Important Product Information Guide* has been preloaded onto your computer. To access this guide, do the following:

For models come with Lenovo Companion:

1. Open the Start menu and then click or tap **Lenovo Companion**.
2. Click or tap **Support** → **User Guide**.

For models without Lenovo Companion:

Open the Start menu and then click or tap **Manual** to access this guide.

For models without preinstalled operating systems:

Go to the Lenovo Support Web site to access your manuals. See "Downloading manuals" for additional information.

Downloading manuals

The latest electronic publications for your computer are available from the Lenovo Support Web site. To download the publications, go to: www.lenovo.com/UserManuals.

Service and Support information

The following information describes the technical support that is available for your product, during the warranty period or throughout the life of your product. Refer to the Lenovo Limited Warranty for a full explanation of Lenovo warranty terms. See "Lenovo Limited Warranty notice" later in this document for details on accessing the full warranty. If you purchased Lenovo services, refer to the following terms and conditions for detailed information:

- For Lenovo Warranty Service Upgrades or Extensions, go to: <http://support.lenovo.com/lwsu>
- For Lenovo Accidental Damage Protection Services, go to: <http://support.lenovo.com/ladps>
- Online technical support is available during the lifetime of a product at: <http://www.lenovo.com/support>

Replacing or upgrading hardware

Safety information for replacing CRUs

Do not open your computer or attempt any repairs before reading the "Important safety information" in the *Safety, Warranty, Environment, Recycling Information Guide* and *Important Product Information Guide* that was included with your computer.

If you no longer have this copy of the *Safety, Warranty, Environment, Recycling Information Guide* and *Important Product Information Guide*, you can obtain one online from the website at <http://www.lenovo.com/UserManuals>.

Pre-disassembly instructions

Before proceeding with the disassembly procedure, make sure that you do the following:

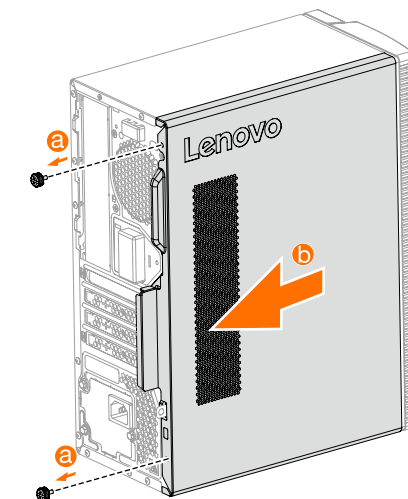
1. Turn off the power to the system and all peripherals.
2. Unplug all power and signal cables from the computer.
3. Place the system on a flat, stable surface.

The CRUs for your computer including: keyboard, mouse, hard disk drive, optical drive, card reader module, PCI express adapter, and memory module. This part contains instructions for replacing the following parts:

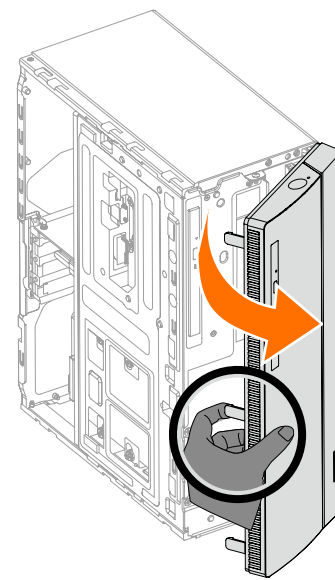
- Card reader module (Follow steps: **1 2 3**)
- Optical drive (Follow steps: **1 2 4**)
- Hard disk drive (Follow steps: **1 2 5**)
- PCI express adapter (Follow steps: **1 2 6**)
- Memory module (Follow steps: **1 2 7**)

Replacing or upgrading hardware

1 Removing the computer cover

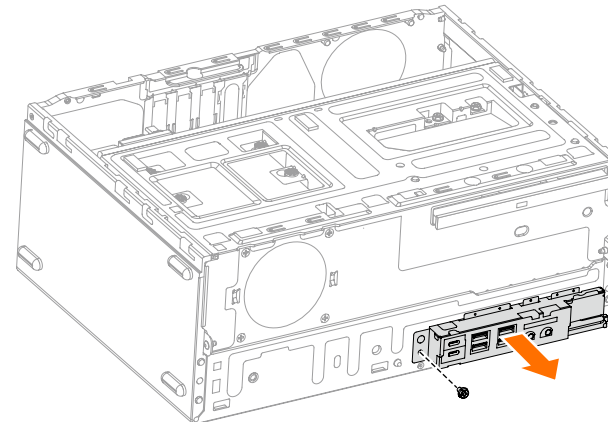


2 Removing the front bezel

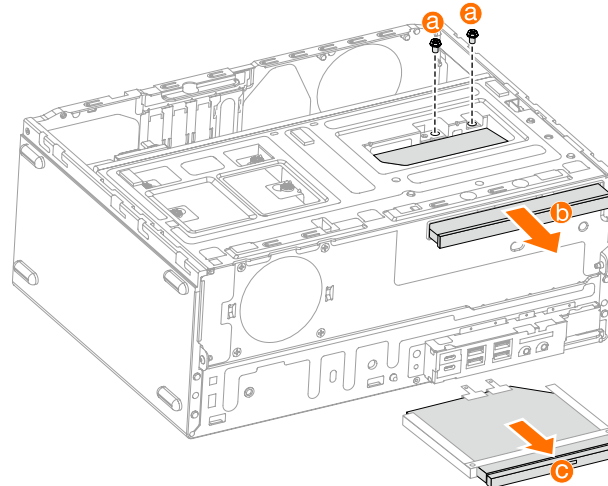


Replacing or upgrading hardware

3 Replacing the card reader module

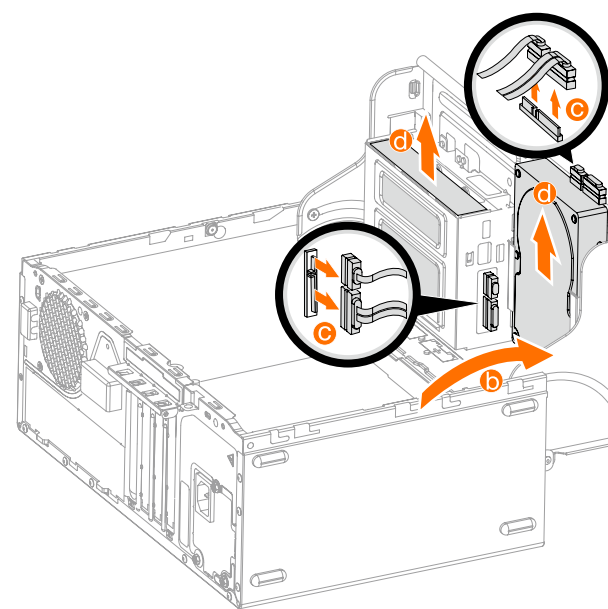
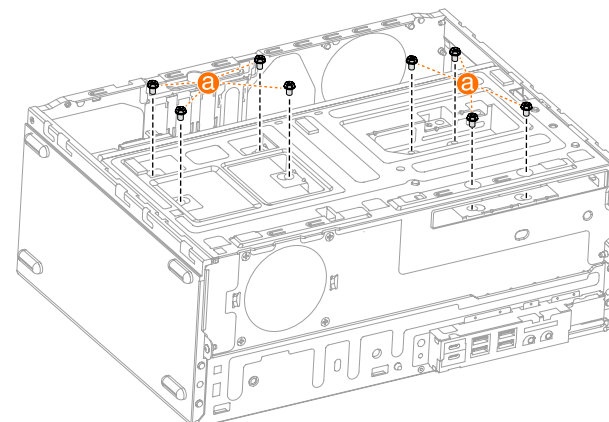


4 Replacing the optical drive



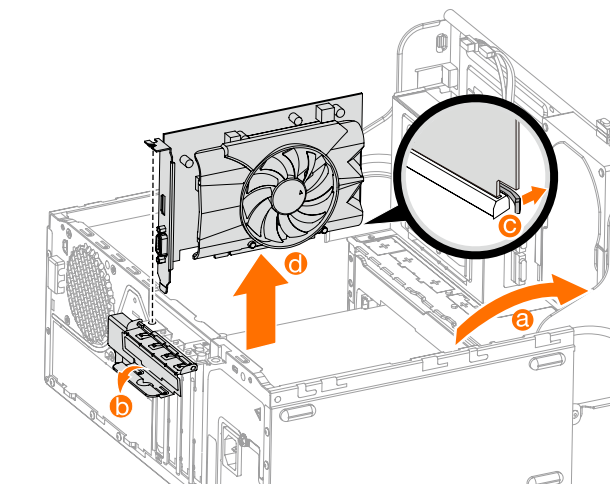
Replacing or upgrading hardware

5 Replacing a hard disk drive

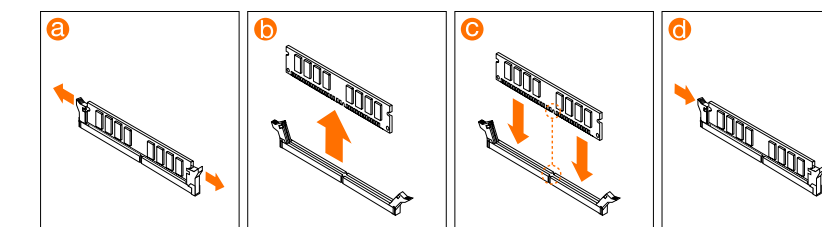


Replacing or upgrading hardware

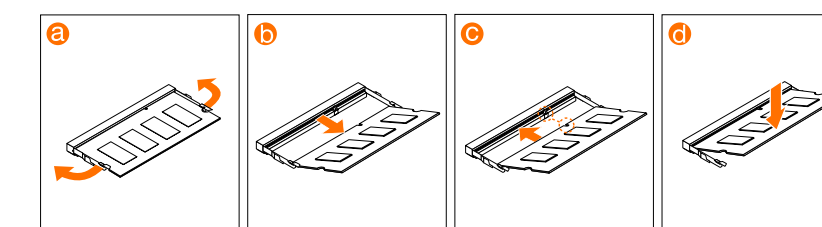
6 Replacing a PCI express adapter



7 Replacing a memory module

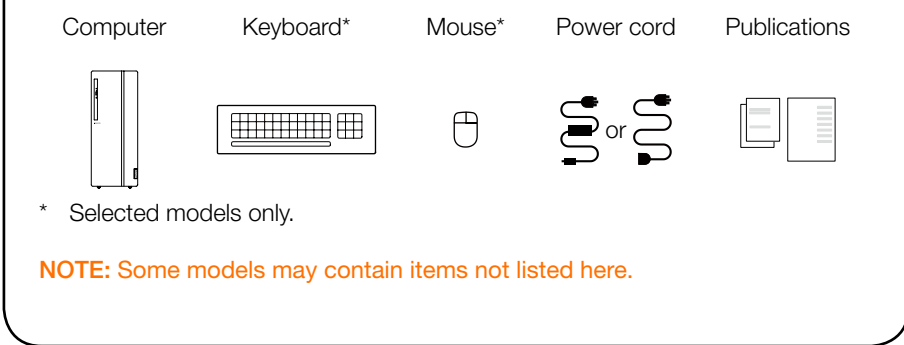


or

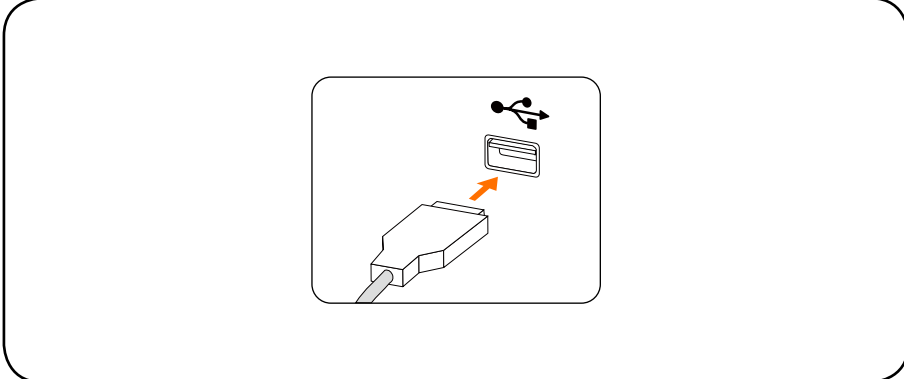


ideacentre 310A/510A Series Quick Start Guide

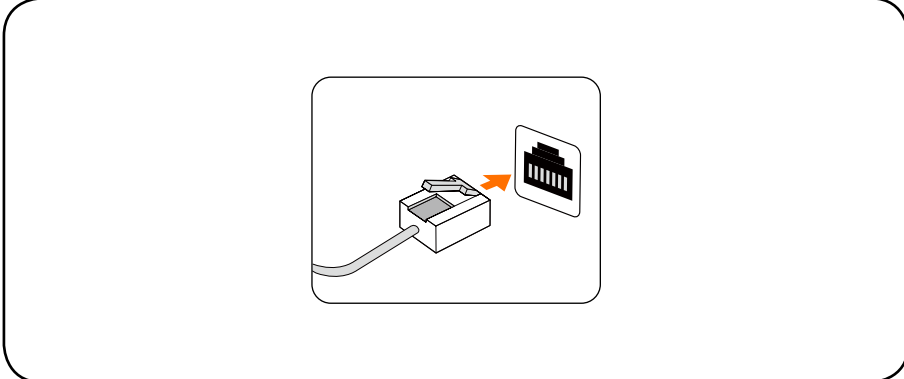
1 Unpacking



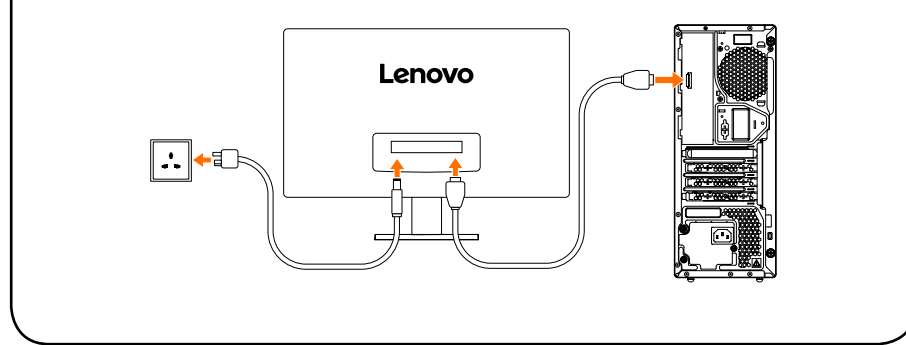
2 Connecting the keyboard and mouse



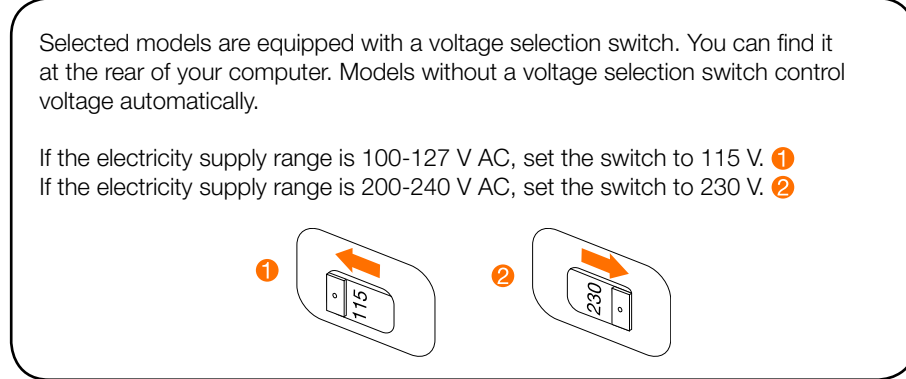
3 Connecting the Ethernet cable



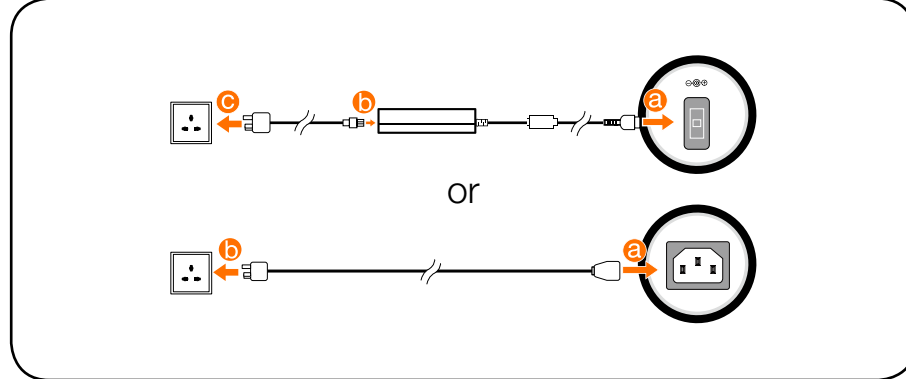
4 Connecting the monitor



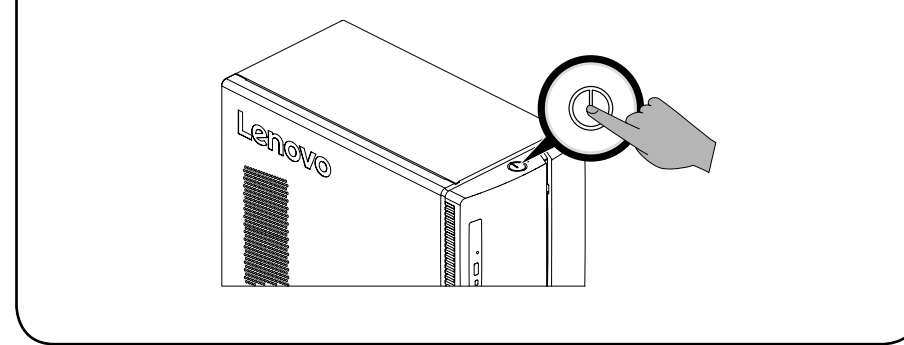
5 Choosing the right voltage



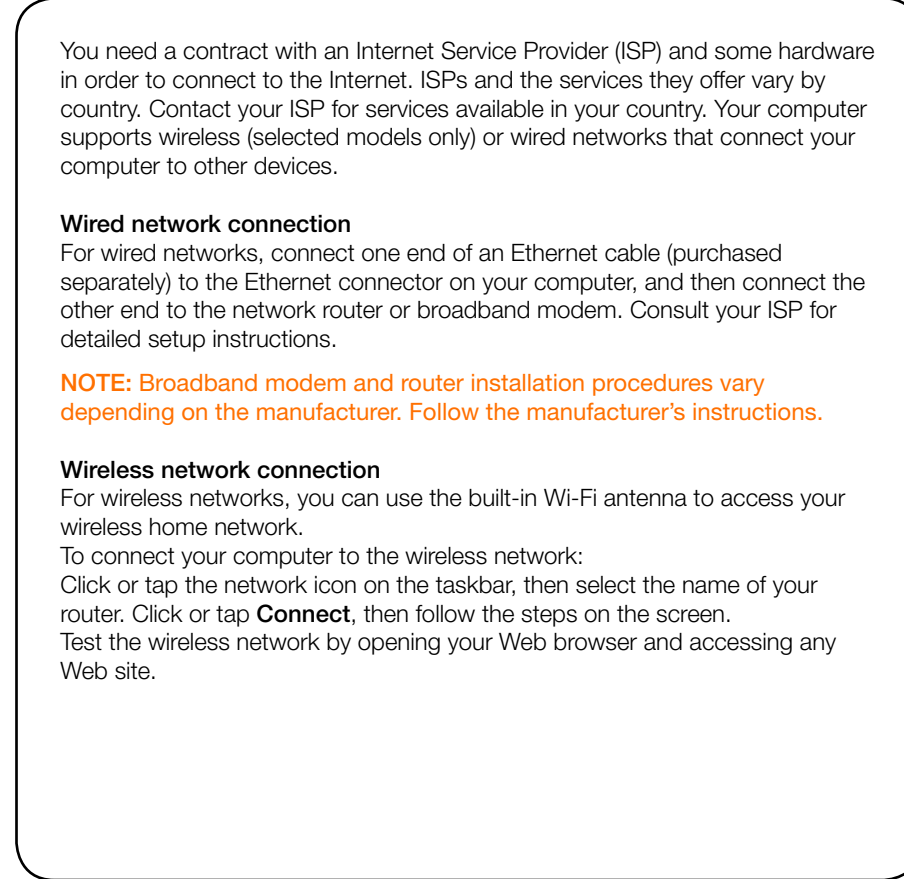
6 Connecting the power cable



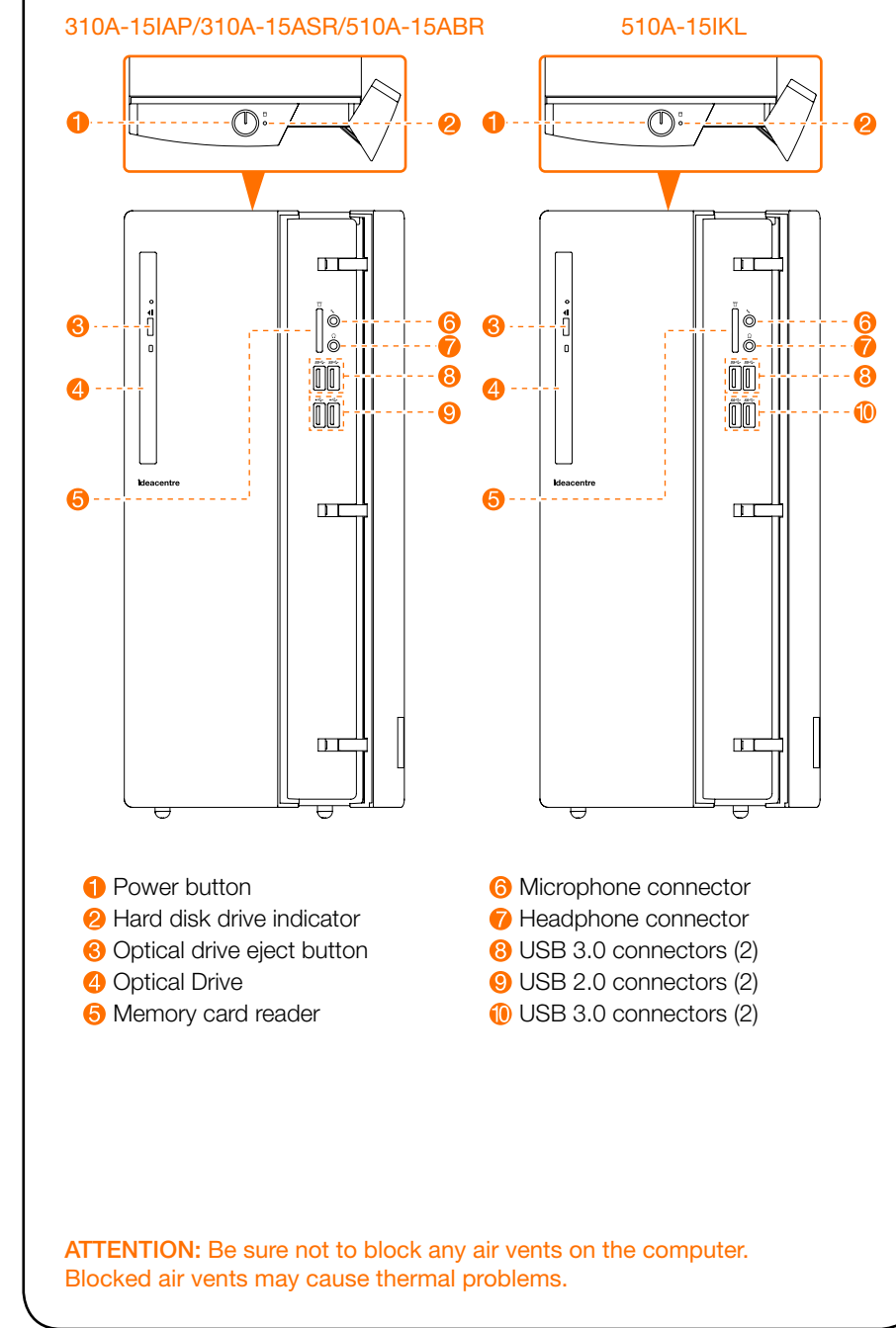
7 Turning on the computer



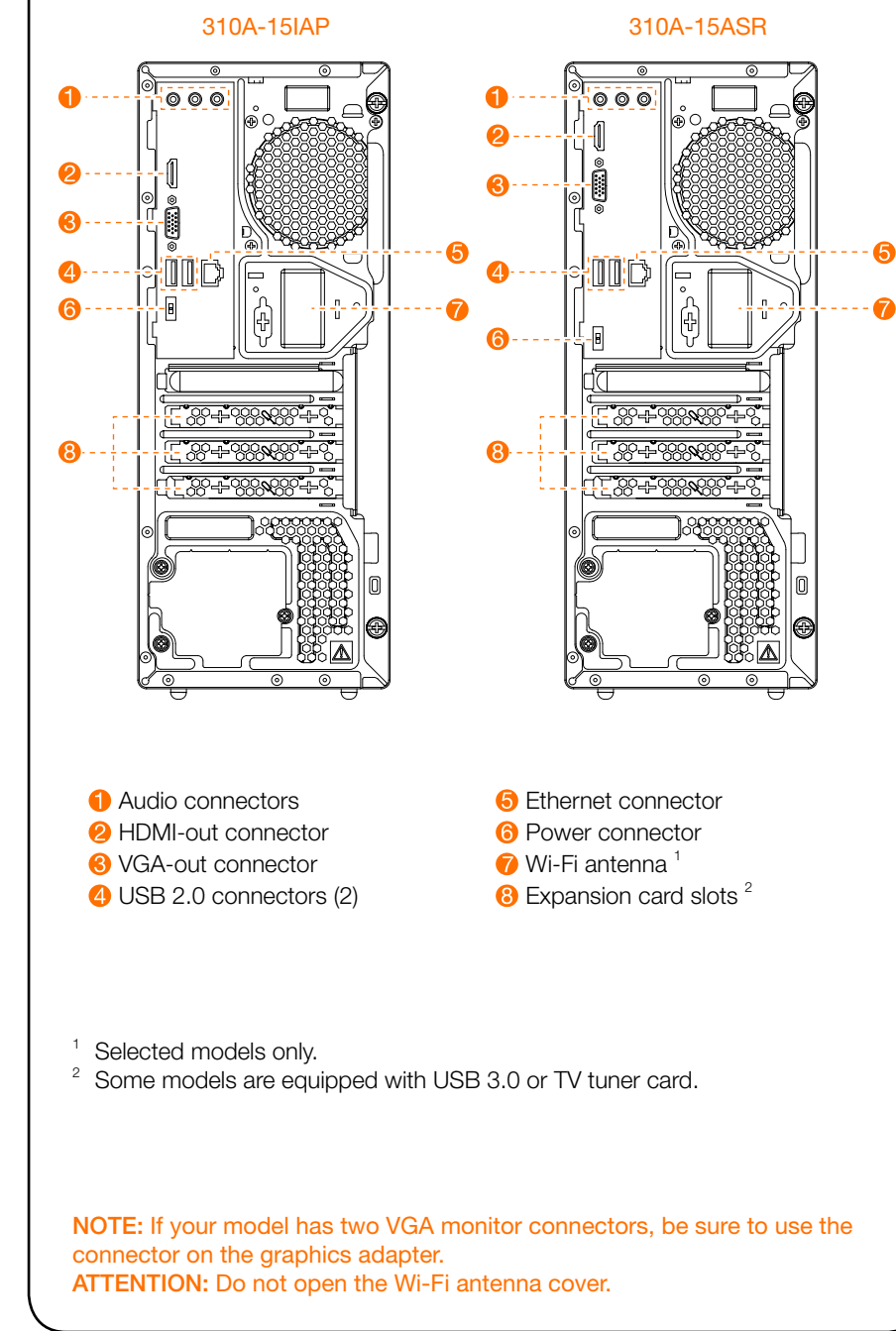
Connecting to the Internet



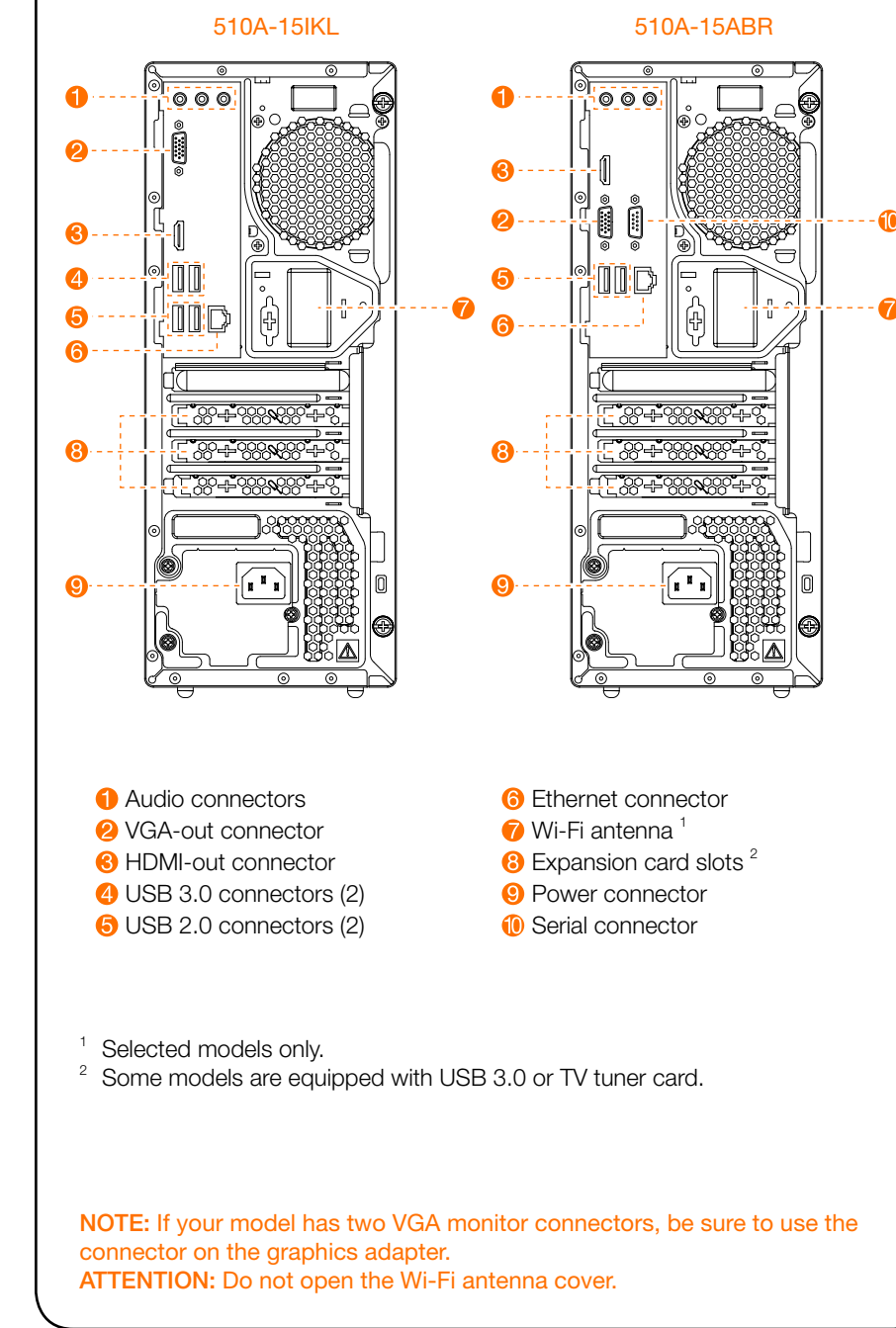
Front/Top view of the computer



Rear view of the computer



Rear view of the computer



Windows help system

