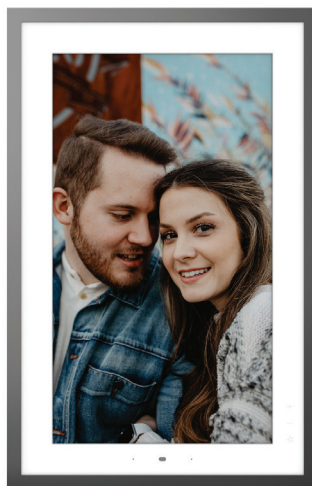


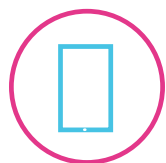
LENOVO™ SMART FRAME

RELIVE ALL YOUR MOMENTS. AT HOME, IN STYLE.

A digital photo frame in a contemporary design, the Lenovo Smart Frame is customized to blend seamlessly into your home's interior. It's your household's entry point to your favorite memories, relived directly from your cloud collection. The Lenovo Smart Frame can also transform into live wall art that's customizable to your taste and surroundings, letting you choose from world-famous pieces to display on a brilliant screen. Whether mounted on a wall, placed on an easel or perched on a shelf, the display looks gorgeous from any angle. Easy to install, set up and navigate, the Lenovo Smart Frame delights each and every time you catch a glimpse.



WHY YOU SHOULD BUY THE LENOVO SMART FRAME



Designed for your home

With a beautiful 15 x 24 canvas-like design, the Lenovo Smart Frame is indistinguishable from an actual photo frame, blending seamlessly into your interior.



Beautiful high-quality display

The Lenovo Smart Frame comes in a high-quality, high-definition display with a matte finish that brings out the vitality of your images while making them look more lifelike. You'll forget you're even looking at a digital screen.



Seamless to use

Setup is simple with the iOS or Android™ companion app. Just connect to the Lenovo Smart Frame and sync your Google Photos account to share and showcase your moments. Our dedicated mount makes self-installation real simple. With a built-in level and easy latch-on system, assembly is seamless and clean.



Relive your favorite moments

The Lenovo Smart Frame will work with Google Photos to share your favorite moments taken from anywhere, in real time. Share your baby's first steps with loved ones on the Lenovo Smart Frame as they happen, with moments uploaded seamlessly onto the shared family cloud album. Smart recommendations mean you only get the best from your collection - no blurry or grainy pictures. And with automatically generated collages, your pictures always look and fit their best in landscape or portrait position, framing each and every moment in the best possible light.



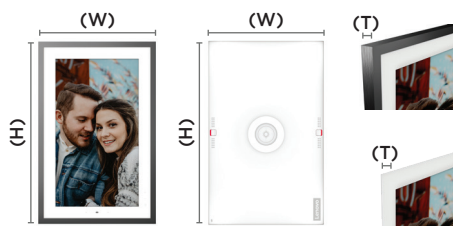
WWW.LENOVO.COM

Lenovo™

LENOVO™ SMART FRAME

SPECIFICATIONS

DESIGN



Dimensions

With Frame

Width : 376.3 mm (14.8")
Height : 584.56 mm (23.01")
Thickness : 36.5 mm (1.43")

Without Frame

Width : 353.15 mm (13.9")
Height : 561.43 mm (22.10")
Thickness : 28.6 mm (1.12")

Operating System

Android™ AOSP 10.0

Display

Size : 21.5"
Type : IPS Panel
with Anti-Glare Coating
Resolution : FHD (1920 x 1080)
Viewing Angle : 85°
Brightness : 250 nits
Orientation : Portrait & Landscape



Frame Color

Metallic Grey



Sensors

RGB Sensor (Ambient light)
Gesture Sensor

I/O Buttons

Volume +
Volume -
Favorite Button

Weight

With Frame
4.65 kg (10.25 lbs)
Without Frame
3.75 kg (8.26 lbs)

PERFORMANCE

Processor

MediaTek 8167s

Audio

2 x 2W Speakers

Microphone

Single Microphone Array

Cloud Database

Works with Google Photos



CONNECTIVITY

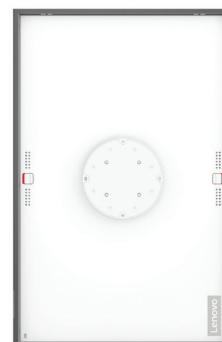
Wireless Connectivity

WLAN : WiFi 802.11 ac/a/b/g/n;
2.4/5 GHz
Bluetooth® : Bluetooth® 5.0



WHAT'S IN THE BOX

- Lenovo Smart Frame
- Metallic Grey Decorative Frame
- Wall Mounting Kit
- DC Adapter



WWW.LENOVO.COM

Lenovo reserves the right to alter product offerings and specifications at any time, without notice. Lenovo makes every effort to ensure accuracy of all information but is not liable or responsible for any editorial, photographic or typographic errors. All images are for illustration purposes only. For full Lenovo product, service and warranty specifications visit www.lenovo.com. Lenovo makes no representations or warranties regarding third party products or services. **Trademarks:** The following are trademarks or registered trademarks of Lenovo: Lenovo, the Lenovo logo, Yoga. Google and the Google logo are trademarks of Google Inc. Android is a trademark of Google Inc. Ultrabook, Celeron, Celeron Inside, Core Inside, Intel, Intel Logo, Intel Atom, Intel Atom Inside, Intel Core, Intel Inside, Intel Inside Logo, Intel vPro, Itanium, Itanium Inside, Pentium, Pentium Inside, vPro Inside, Xeon, Xeon Phi and Xeon Inside are trademarks of Intel Corporation in the U.S. and/or other countries. Other company, product and service names may be trademarks or service marks of others. Battery life (and recharge times) will vary based on many factors including system settings and usage. ©2020 Lenovo. All rights reserved.

Lenovo™