



24 in. Microwave Drawer™ Oven

SMD2420MS

- Automatic drawer system, opens with a press of a button and gently closes with a soft nudge
- Angled Control Panel for Easy Viewing and Operation
- Sensor Cook Menu for Precise Cooking and Reheating
- Fits a 20 oz. Cup or 4 qt. Casserole Dish
- Install Below an Island, Peninsula, or Standard Cabinetry
- Flush-Mount Ready

FEATURES

| | |
|-------------------------|-----------------------------------|
| Finish | Stainless Steel |
| Drawer Opening | Automatic Door, Open/Close Button |
| Width | 24" |
| Capacity (cu. ft.) | 1.2 |
| Output Power (watts) | 950 |
| Interior Light | Incandescent |
| Open/Close | Yes |
| Start/+30Sec | Yes |
| Stop/Clear | Yes |
| Power Level | 11 |
| Timer/Clock | Yes |
| Control Lock | Yes |
| Help/Settings | Yes |
| Demo Mode | Yes |
| End of Cooking Reminder | Yes |

CONTROL PANEL

| | |
|------------------------|---------------------------|
| Control Panel Location | Center/Top |
| Control Panel Type | Membrane |
| Display Type | LCD 7-Segment |
| Display Color | White on Black Background |

COOKING / MENU PRESETS

| | |
|----------------|---|
| Popcorn | Yes, Sensor |
| Reheat | Yes, Sensor |
| Sensor Cook | Quick Fresh Vegetables, Longer Fresh Vegetables, Frozen Vegetables, Sweet Potatoes, Ground Meat, Fish/Seafood, White Rice, Brown Rice |
| Frozen Entrée | Yes, Sensor |
| Baked Potatoes | Yes, Sensor |
| Steamer Bags | Yes, Sensor |
| Defrost | Ground Meat, Steaks/Chops, Boneless Poultry, Bone-in Poultry, Roast, Casserole or Soup |
| More Menus | Melt Butter, Melt Chocolate, Soften Ice Cream, Soften Cream Cheese, Warm Syrup, Warm Dessert Toppings, Fresh Rolls/Muffins, Frozen Rolls/Muffins, Keep Warm |

ADDITIONAL FEATURES

| | |
|-------------------|-----|
| Flush Mount Ready | Yes |
|-------------------|-----|

OPTIONAL ACCESSORY

| | |
|--------------|---------------------------------------|
| Product Name | Drawer Under-the-Counter Pedestal |
| Model | SKMD24U0ES |
| Color | Stainless Steel or Custom Panel Ready |
| UPC | 074000620865 |

ADDITIONAL SPECIFICATIONS

| | |
|--------------|----------------------------|
| Power Source | 120V, 60HZ / 15A / 1.67 KW |
|--------------|----------------------------|

DIMENSIONS & WEIGHT (IN./LBS.) (W X H X D)

| | |
|----------------------------------|-------------------------------|
| Interior Cavity Dimensions | 17-5/16" x 7-1/8" x 16-9/16" |
| Product Dimensions | 23-5/8" x 15-1/16" x 23-7/16" |
| Shipping Dimensions | 27-3/4" x 21-3/4" x 29-1/4" |
| Product Weight/Shipping Weight | 72.0 lbs. / 83.6 lbs. |
| Standard Mount Cutout Dimensions | 22-1/8" x 14-13/16" x 23-1/2" |
| Flush Mount Cutout Dimensions | 23-7/8" x 15-5/16" x 23-1/2" |

WARRANTY / UPC

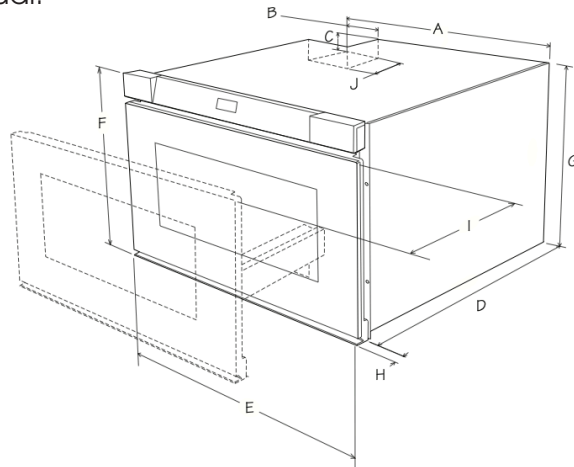
| | |
|----------------|---------------------------------|
| Parts | 1 Year (In-Home Limited) |
| Labor | 1 Year (In-Home Limited) |
| Magnetron Tube | 4 Years Additional (Parts Only) |
| UPC | 074000623019 |



The following are measurements only.
Do not use to install microwave drawer™ oven.

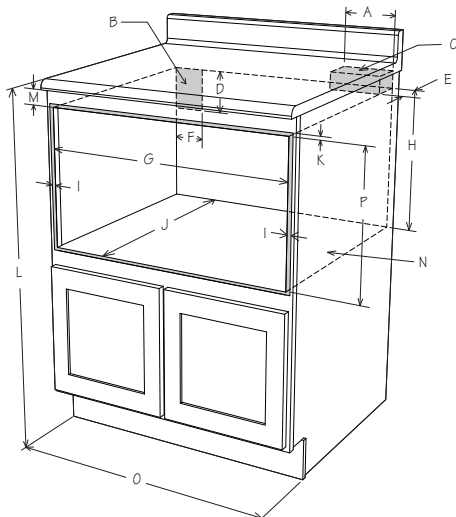
For detailed installation instructions, please refer to the installation manual.

PRODUCT DIMENSIONS



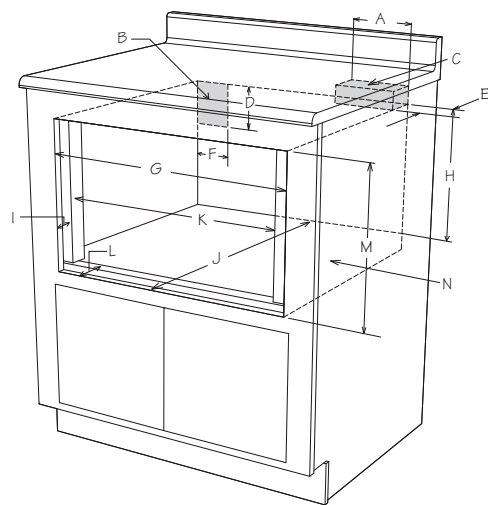
- A. 21-5/8" (549.28 mm)
- B. 4-11/16" (119.06 mm)
- C. 1-3/4" (44.45 mm)
- D. 21-7/8" (555.63 mm)
- E. 23-5/8" (600.07 mm)
- F. 15-1/16" (382.59 mm)
- G. 14-5/8" (371.48 mm)
- H. 1-9/16" (39.69 mm) door thickness
- I. 15" (381 mm) auto drawer opening
- J. 4" (101 mm)

STANDARD MOUNT MEASUREMENTS



- A. 6" (152.40 mm)
- B. Suggested electrical outlet location
- C. Anti-Tip block
- D. 5" (127 mm)
- E. 3-1/2" (88.90 mm)
- F. 4" (101.60 mm)
- G. 22-1/8" (561.97 mm) opening
- H. 14-13/16" (376.24 mm) to bottom of Anti-Tip block
- I. Allow 7/8" (22.22 mm) overlap
- J. 23-1/2" (596.90 mm) min. depth
- K. Allow 1/4" overlap
- L. 36" (914.40 mm) countertop height
- M. Allow 1/4" min. space
- N. Floor must support 100 lb/45.4 kg
- O. 24" (609.60 mm) cabinet min.
- P. 14-13/16" (395.29 mm) opening

FLUSH MOUNT MEASUREMENTS



- A. 6" (152.40 mm)
- B. Suggested electrical outlet location
- C. Anti-Tip block
- D. 5" (127 mm)
- E. 3-1/2" (88.90 mm)
- F. 4" (101.60 mm)
- G. 23-7/8" (606.43 mm)
- H. 14-13/16" (376.24 mm) to bottom of Anti-Tip block
- I. 1-9/16" (25.4mm)
- J. 23-1/2" (596.90 mm) min. depth
- K. 22-1/8" (561.97 mm)
- L. 1-9/16" (25.4mm) to front of shelf
- M. 15-5/16" (388.934 mm) opening
- N. Floor must support 100 lb (45.4 kg)