



LED TV

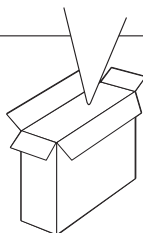
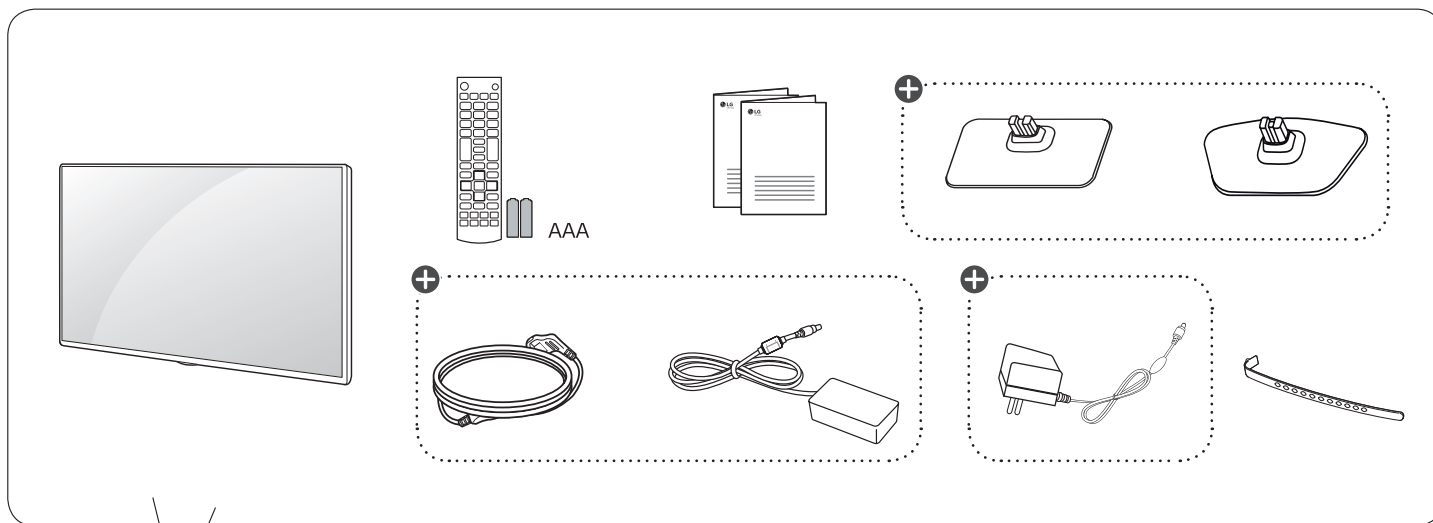
LF45**

LF47**

Quick Start Guide



www.lg.com



Unpacking

Check your product box for the following items. If there are any missing accessories, contact the local dealer where you purchased your product. The illustrations in this manual may differ from the actual product and item.

⊕ : Depending on model

*Images may vary depending on models

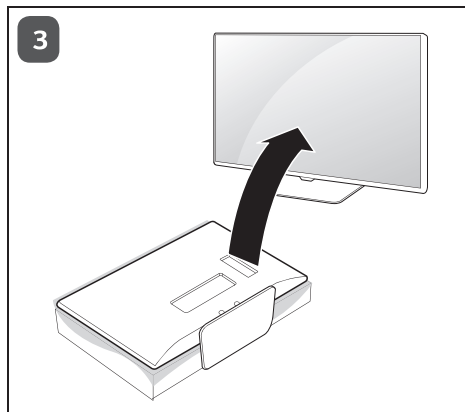
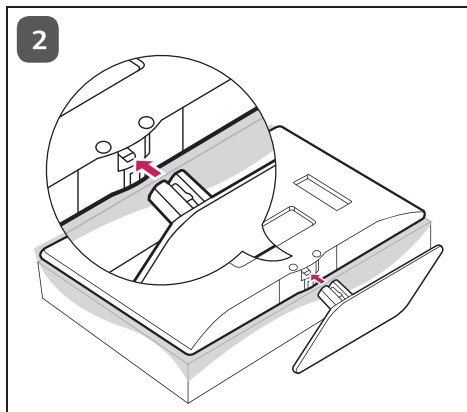
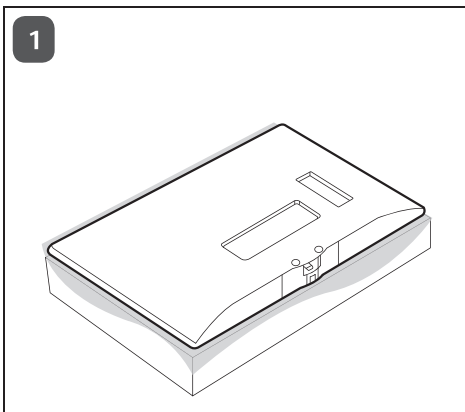
P/No: MFL68062739 (1503-REV01)



English

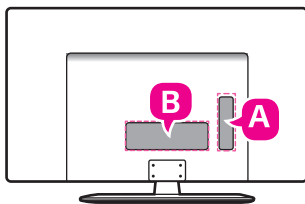
- Read **Safety and Reference**.
- For the power supply and power consumption, refer to the label attached to the product.

1



2

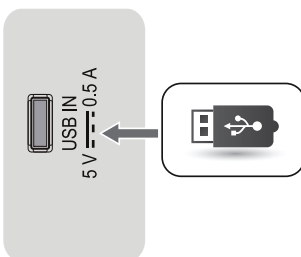
LF47**-TA/TB,
LF45**-TA/TB



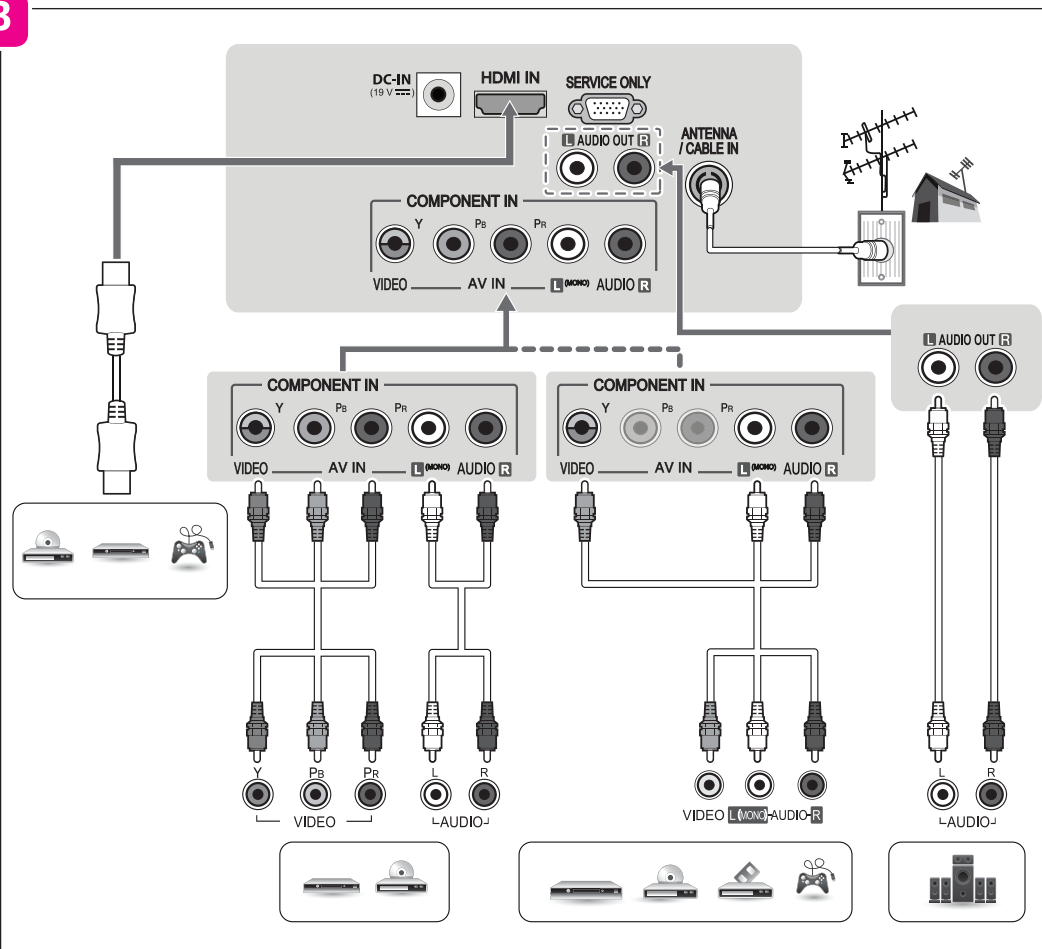
USB Connection

Connect a USB storage device such as a USB flash memory, external hard drive, or a USB memory card reader to the TV and access the Entertainment menu to use various multimedia files.

A

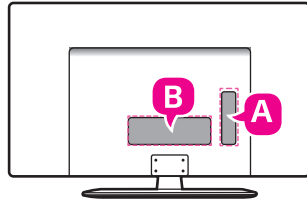


B



NOTE: All connection cables shown in the picture are not included along with the TV set

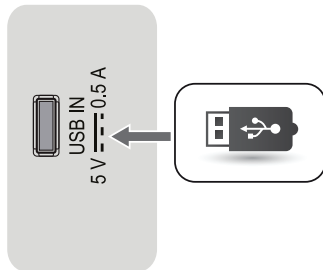
LF45**-TG/TI/TJ



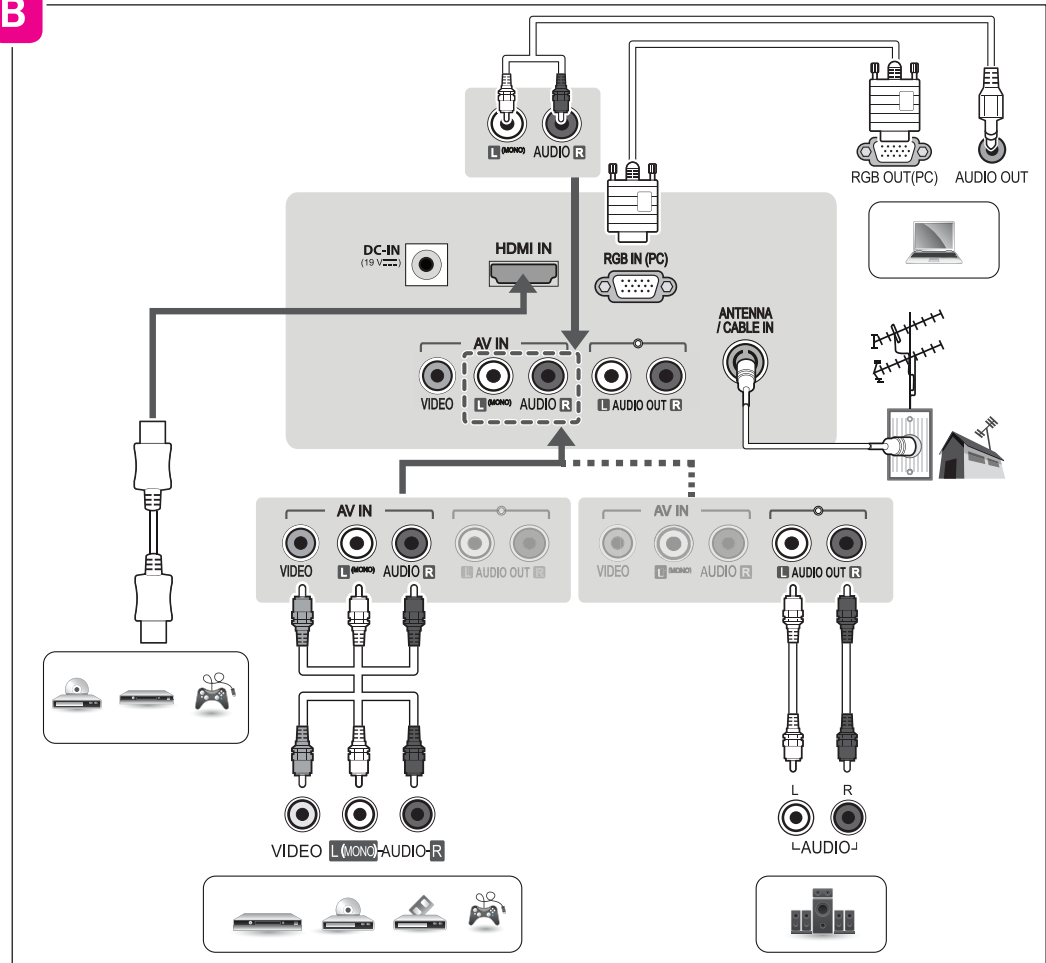
USB Connection

Connect a USB storage device such as a USB flash memory, external hard drive, or a USB memory card reader to the TV and access the Entertainment menu to use various multimedia files.

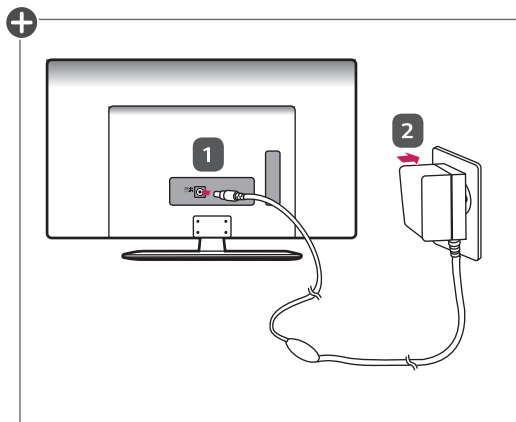
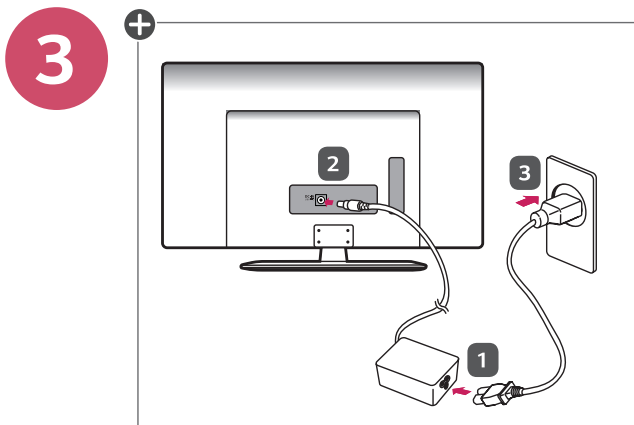
A



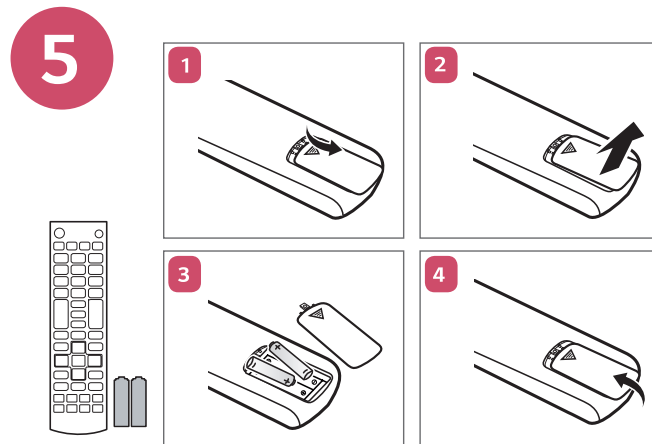
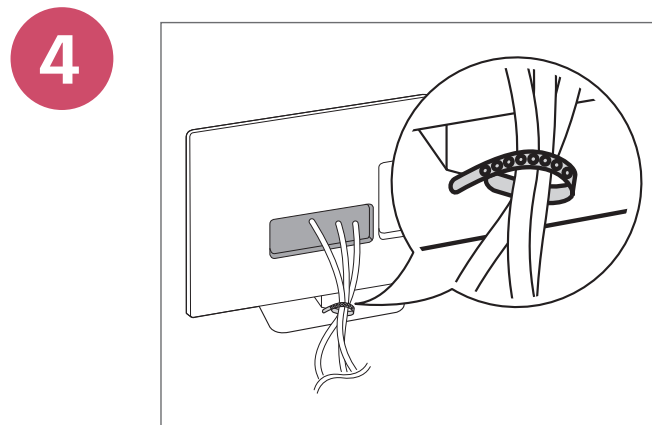
B



NOTE: All connection cables shown in the picture are not included along with the TV set



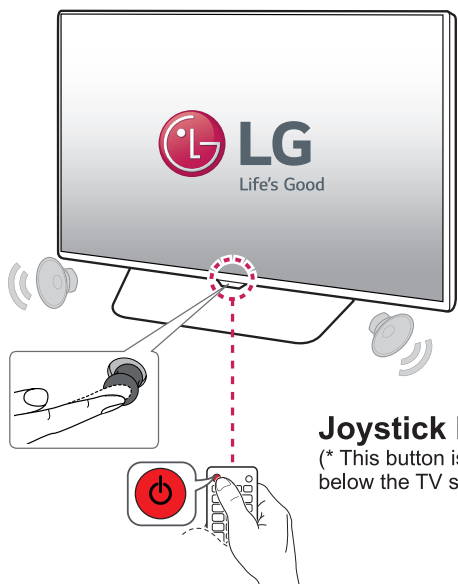
⁺ : Depending on model



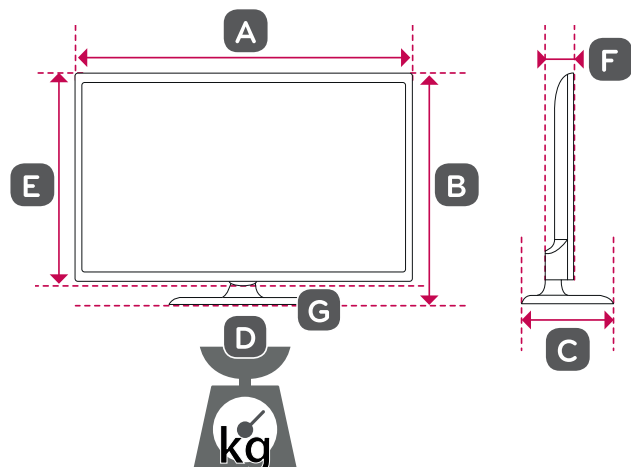
! NOTE

Do not use sub standard batteries in TV remote which may lead to leakage & damage the remote control unit permanently. For long unused applications of remote controller it is advisable to remove batteries from remote control unit.

6



Joystick button
(* This button is located
below the TV screen.)



	22LF471A-TA	28LF471A-TA	22LF473A-TB
A x B x C (mm)	506 x 354 x 135.8	638 x 430 x 170	506 x 354 x 140.6
A x E x F (mm)	506 x 311.7 x 55.8	638 x 389 x 56.8	506 x 311.7 x 55.8
D (kg)	3.2	4.6	3.2
D - G (kg)	3.0	4.3	3.0

Power requirement	19 V ---
-------------------	----------

MFL68062739



	22LF450A-TB 22LF457A-TI 22LF450A-TI	24LF450A-TB 24LF457A-TI 24LF450A-TI	28LF450A-TB 28LF457A-TI 28LF450A-TI
A x B x C (mm)	507.6 x 355.9 x 135.8	556 x 384.3 x 135.8	641.5 x 432.0 x 170
A x E x F (mm)	507.6 x 315.7 x 53.1	556 x 343.1 x 53.1	641.5 x 395.8 x 57.6
D (kg)	3.1	3.5	4.5
D - G (kg)	2.9	3.3	4.2
	22LF452A-TA 22LF454A-TG 22LF458A-TJ	24LF452A-TA 24LF454A-TG 24LF458A-TJ	28LF452A-TA 28LF454A-TG 28LF458A-TJ
A x B x C (mm)	507.6 x 355.9 x 140.6	556 x 384.3 x 140.6	641.5 x 432.0 x 175
A x E x F (mm)	507.6 x 315.7 x 53.1	556 x 343.1 x 53.1	641.5 x 395.8 x 57.6
D (kg)	3.1	3.5	4.5
D - G (kg)	2.9	3.3	4.2
Power requirement	19 V --- 1.7 A		19 V --- 2.1 A

IN002043