

AIRMSSEN

HOT & COLD NUTRITIONAL BLENDER



USER MANUAL

If you are having problems using this HOT & COLD NUTRITIONAL BLENDER
Please email: service@airmsen.com or call **1-844-725-2333**
for assistance: www.airmsen.com

To best serve you, our AIRMSSEN Representatives are available to answer your
calls Monday to Friday, 10:30 AM - 6:30 PM EST.

THANK YOU FOR MAKING AIRMSSEN APPLIANCES A PART OF YOUR HOME.

CONSTANT INNOVATION FOR BETTER PRODUCTS

With “technology, innovation, health” as our core value, we strive to provide you with the preferred brand of household products in your healthy and quality life.

AIRMOSEN focuses on researching, developing and manufacturing various kinds of household supplies with advanced technologies and the idea of sustainable development. Aiming to promote the evolution of our lifestyle, we will bring our customers around the world a healthier, happier, more intelligent and ecofriendly home life with our high quality products.

SAFETY

Your safety and the safety of others is very important.

We have provided many important safety messages in this manual and on your appliance. Always read and obey all safety messages.



This is the safety alert symbol.

This symbol alerts you to potential hazards that can cause serious injury to you and others.

All safety messages will follow the safety alert symbol.

All safety messages will tell you what the potential hazard is, tell you how to reduce the chance of injury, and tell you what can happen if the instructions are not followed.

CONTENTS

IMPORTANT SAFEGUARDS	04
SAFETY WARNINGS	04
PRODUCT SPECIFICATIONS	05
COMPONENT INTRODUCTION	06
CONTROL PANEL INSTRUCTIONS	07
CONTROL PANEL LAYOUT	07
START / CANCEL	07
MENU	07
CAPACITY	07
TIME	07
RESERVATION	08
PULSE	08
PROGRAM QUICK REFERENCE	08
MENU OPERATION INSTRUCTIONS	09
RESERVATION (DELAYED START 0–12 HOURS)	09
TIME (ADJUSTABLE WORKING TIME)	09
CAPACITY (VOLUME SELECTION 20.3 / 27.1 / 33.8 / 40.6 OZ)	09
PULSE (MANUAL BLENDING)	09
INSTALLATION AND PREPARATION FOR FIRST USE	10
INITIAL CLEANING RECOMMENDATION	12
OPERATING INSTRUCTIONS	12
HOT DRINK FUNCTIONS	12
PAUSE ADJUSTMENT OPERATING GUIDE	09
USAGE INSTRUCTIONS	10
CLEANING AND MAINTENANCE	12
STEAM NOZZLE INSTALLATION	12
COLD DRINK FUNCTIONS	14
PROGRAM COMPLETION, REMOVAL, AND POURING	15
CLEANING & MAINTENANCE	15
DAILY CLEANING	15
SELF-CLEANING	15
DESCALING	15
WATER TANK & LID MAINTENANCE	16
WARRANTY	17
CUSTOMER SUPPORT	17

IMPORTANT SAFEGUARDS

Congratulations on your purchase of the new AIRMSEN HOT & COLD NUTRITIONAL BLENDER. This user manual contains important information regarding the installation, use, and maintenance of this machine. Please spend some time reading this manual to make the best use of all functions of this HOT & COLD NUTRITIONAL BLENDER.

SAFETY WARNINGS

To reduce the risk of fire, electric shock, and/or personal injury, please always stick to the following basic safety precautions when using this machine:

INTENDED USE

- This appliance is for **INDOOR HOUSEHOLD USE ONLY**. **Do not use outdoors or for commercial purposes.**
- **Keep this appliance out of the reach of children.** Children must **NOT** use, clean, or maintain this appliance **without supervision**.
- This appliance is **NOT intended** for use by persons with reduced physical, sensory, or mental capabilities, or lack of experience and knowledge, **unless they are supervised or instructed on safe use** by a responsible person.

ELECTRICAL SAFETY

- Use only a **120 V ~ 60 Hz** power outlet (**refer to the rating label on the product**).
- **Do NOT plug in or unplug the power cord with wet hands.**
- **Always unplug the appliance before assembling, disassembling, moving, or cleaning.**
- **Do NOT immerse** the base unit, power cord, or plug in water or any other liquid, and **do NOT rinse them under running water.**
- **Do NOT use** the appliance if the power cord or plug is damaged.
If damage occurs, **stop using the appliance immediately** and contact customer service or a qualified technician for repair.
- **Do NOT operate this appliance with an external timer or a separate remote-control system.**

STEAM AND HOT SURFACE SAFETY

- Heating programs generate **HIGH-TEMPERATURE STEAM**.
Do NOT open the lid, remove the noise-reduction cover, or place your face or hands near the steam outlet during operation.
- **Do NOT cancel heating, cleaning, or descaling programs during operation unless absolutely necessary.**
If cancellation is required, **stay away from the steam outlet and wait until the internal draining process is complete** before removing the blending jar.
- After a program finishes, the blending jar, lid, and surrounding parts **may remain hot**.
Allow them to cool slightly before removing the jar or pouring contents.

BLADES AND MOVING PARTS

- **Blades are sharp.**
Do NOT touch the blade assembly when cleaning or emptying the jar to avoid injury.
- **Never insert hands, spoons, chopsticks, or any other objects into the blending jar while the appliance is operating.**

FILLING AND WATER USAGE RULES

1. **Do NOT exceed the MAX fill line** marked on the blending jar.
2. **Heating / Self-Cleaning / Descaling:**
 - Water is supplied automatically from the **WATER TANK**.
 - **Do NOT add water to the blending jar.**
 - Add ingredients **only as required by the selected function or recipe.**
3. **Cold Programs:**
 - **Add the required drinking liquid** (such as water, milk, or juice) **directly into the blending jar.**

The appliance does NOT add liquid automatically.

4. Water Tank:

- **Add CLEAN WATER ONLY.** Purified or distilled water is recommended.
- **Do NOT add milk, soup, seasoning, oil, or any other liquids to the water tank.**

CLEANING SAFETY

- **Always unplug the appliance and ensure it has COMPLETELY COOLED before cleaning.**
- **Do NOT use steel wool, abrasive cleaners, or corrosive liquids** (such as gasoline or acetone) to clean this appliance.

KEEP THIS MANUAL FOR FUTURE REFERENCE.

APPLICATIONS & OPERATING PRINCIPLE

APPLICATIONS

Hot / Heating Programs:

- Soy milk, thick soups, fruit compote, and milk-based beverages.
- **Water is supplied automatically from the water tank and heated during operation.**

Cold Programs:

- Cold soups, smoothies, juices, and general blending.
- **No heating is applied. Drinking liquid must be added manually to the blending jar.**

Support Programs:

- Cleaning (Self-Cleaning), and Descaling (Scale Removal).

HOW IT WORKS

Hot / Cleaning / Descaling Programs:

1. Clean water is supplied from the water tank,
2. the internal steam, heating system operates,
3. heating and blending are completed inside the blending jar.

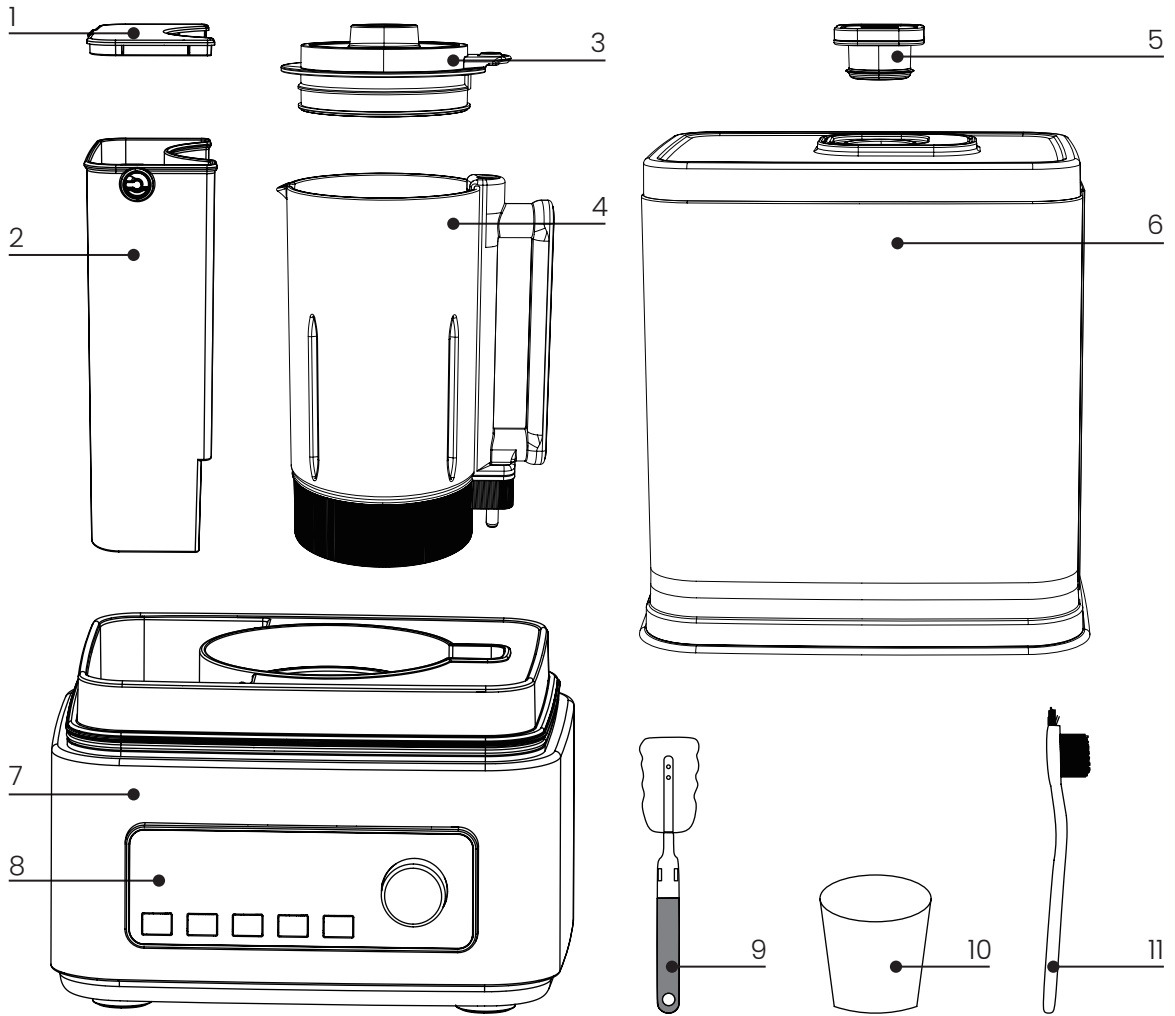
Cold Programs:

- **Blending only, no heating.**
- All required drinking liquid must be added directly into the blending jar by the user.

PRODUCT SPECIFICATIONS

Model	Voltage	Frequency	
TL-1215D	120V~	60Hz	
Blending Power	Heating Power	Maximum Hot Capacity	Maximum Cold Capacity
500W	1200W	40.6 fl oz	50.7 fl oz

COMPONENT INTRODUCTION



Parts & Components:

1. Water Tank Lid
2. Water Tank
3. Blender Jar Lid
4. Blender Jar
5. Sound Shield Cap
6. Sound Shield
7. Motor Base
8. Control Panel
9. Sponge Brush
10. Measuring Cup
11. Cleaning Brush

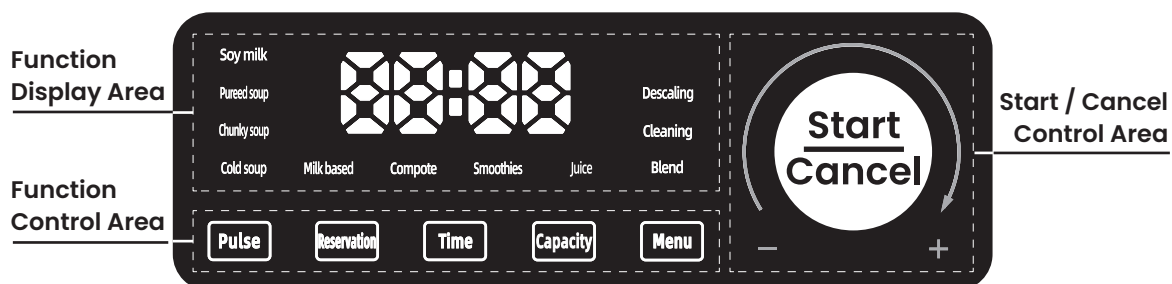
To purchase accessories, please visit: www.airmsen.com

Note: The product images are for reference only. Please refer to the actual product inside the package.

CONTROL PANEL INSTRUCTIONS

CONTROL PANEL LAYOUT

1. **Function Display Area:** Displays the current time, operating status, and selected program.
2. **Function Control Area:** Used to select programs and adjust settings.
3. **Start / Cancel Control Area:** Used to start, cancel, or power off the appliance.



START / CANCEL

Power On / Enter tandby	After plugging in, a beep sounds and indicator lights turn on. Press START/CANCEL, all program indicators illuminate , the appliance enters Standby mode and is ready for program selection.
Start a Program	In Standby mode, rotate the knob or press Menu to select a program (the selected indicator flashes), press START/CANCEL again to start the program.
Cancel a Program	During operation, press START/CANCEL again to cancel. IMPORTANT: After cancellation, the appliance automatically drains/pumps internally . Wait until draining is complete before removing the blending jar to avoid hot liquid dripping or burn risk .
Standby / Screen Off	If no program is selected, press START/CANCEL to turn off the display and indicator lights and enter screen-off standby mode .

MENU

1. In **Standby mode**, lightly press **Menu**; the corresponding program indicator **starts flashing**.
2. **Each press of Menu** cycles through the programs in sequence.
3. When the desired program indicator is flashing, **press START / CANCEL** to start the program.

CAPACITY

1. Used to adjust the blending or cleaning volume for **selected programs only**.
2. Available volume options (cycled):
 - approx. **20.3 / 27.1 / 33.8 / 40.6 fl oz**.
3. **This function is available only for programs that support capacity adjustment.**
 - If not supported, **the CAPACITY button will not be displayed or active**.

TIME

- Used to adjust the working time for **selected programs only**.
- **This appliance supports minute-based adjustment only.**
- Supported programs: **Soy Milk**.

RESERVATION

- Used to set a **delay start time from 0 to 12 hours**.
- The delay time is the **waiting time before the program starts** and **does not include the program's running time**.

PULSE

- Used for **short, manual blending**.
- **Press and hold** to blend; **release to stop**.
- **Recommended single pulse duration: no more than 30 seconds** to prevent motor overheating.

PROGRAM QUICK REFERENCE

NOTE: Not all programs support all settings. **Only settings supported by the selected program will be displayed or available for operation.**

Category	Program Name	Heating	Water / Liquid Rule	Adjustable Settings
Hot Drinks	Soy Milk	Yes	Add clean water to the water tank (do NOT add water to the blending jar)	Reservation / TIME / CAPACITY
	Pureed Soup	Yes	Add clean water to the water tank (do NOT add water to the blending jar)	Reservation
	Chunky Soup	Yes	Add clean water to the water tank (do NOT add water to the blending jar)	Reservation / CAPACITY
	Milk Based	Yes	Add clean water to the water tank (do NOT add water to the blending jar)	Reservation / CAPACITY
	Compote	Yes	Add clean water to the water tank (do NOT add water to the blending jar)	Reservation / CAPACITY
Cold Drinks	Cold Soup	No	Add drinking liquid directly into the blending jar	Not supported
	Smoothies	No	Add drinking liquid directly into the blending jar	Not supported
	Juice	No	Add drinking liquid directly into the blending jar	Not supported
	Blend	No	Add drinking liquid directly into the blending jar	Not supported
Cleaning	Cleaning	Yes	Add clean water to the water tank (default 27 fl oz , max 34 fl oz)	CAPACITY
	Descaling	Yes	Add clean water + food-grade citric acid solution to the water tank	Not supported

MENU OPERATION INSTRUCTIONS

A specific setting button will only be displayed or operable if the selected function supports it. It is normal for a button to be hidden or unresponsive if it is not supported by the current mode.

RESERVATION (DELAYED START 0–12 HOURS)

- **Supported Functions:** Soy Milk, Pureed Soup, Chunky Soup, Milk Based, Compote.
 - **Unsupported Functions:** Cold Soup, Smoothies, Juice, Blend, Descaling, Cleaning.
1. In standby mode, select a function that supports **Reservation** (the indicator light will flash).
 2. Tap the **Reservation** button to enter setting mode; “Hours / Minutes” will appear on the display.
 3. Turn the knob to set the desired delay time (0–12 hours).
 4. Press **START / CANCEL** to confirm. The device will enter the countdown/waiting state.
 5. Do not power off or move the device during the delay period. The selected program will start automatically once the timer reaches zero.

TIME (ADJUSTABLE WORKING TIME)

- **Supported Functions:** Soy Milk.
 - **Time Range:** 17:30 – 27:30 minutes (10-minute increments).
1. In standby mode, select Soy Milk.
 2. Tap the **TIME** button to enter the time setting mode.
 3. Turn the knob to adjust the minutes.
 4. Press **START / CANCEL** to start. The remaining time will count down on the display during operation.

CAPACITY (VOLUME SELECTION 20.3 / 27.1 / 33.8 / 40.6 OZ)

- **Supported Functions:** Soy Milk, Chunky Soup, Milk Based, Compote, Cleaning.
 - **Unsupported Functions:** Pureed Soup, Cold Soup, Smoothies, Juice, Blend, Descaling.
1. In standby mode, select a function that supports capacity adjustment.
 2. Tap the **CAPACITY** button to enter the volume setting mode.
 3. Turn the knob to cycle through the options (**20.3 / 27.1 / 33.8 / 40.6 fl oz**).
 4. Press **START / CANCEL** to start the program.
- **Note: The default capacity for Cleaning is 27 oz, with a maximum setting of 34 oz.**

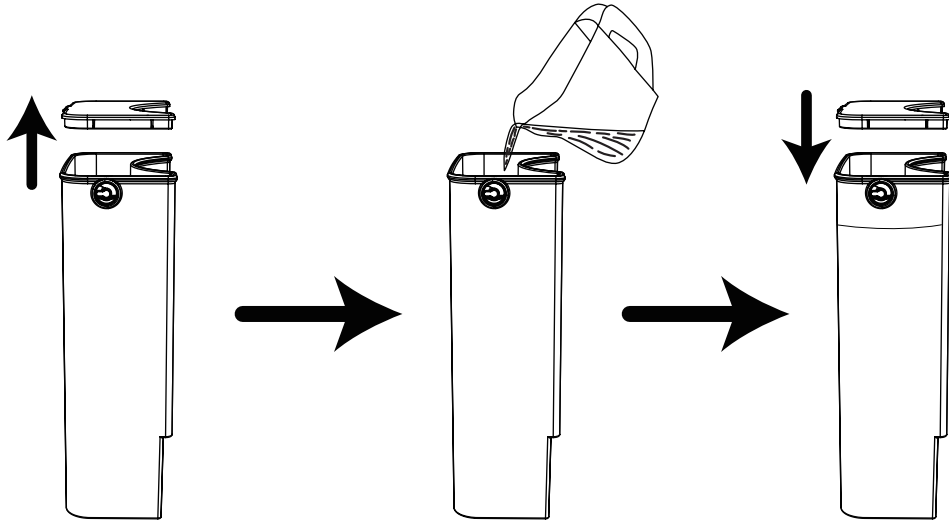
PULSE (MANUAL BLENDING)

1. In standby mode or when short-burst blending is needed, press and hold the **PULSE** button to start; release it to stop.
2. It is recommended not to exceed **30 seconds** per pulse. If further blending is required, wait a moment before pressing again to prevent the motor from overheating.

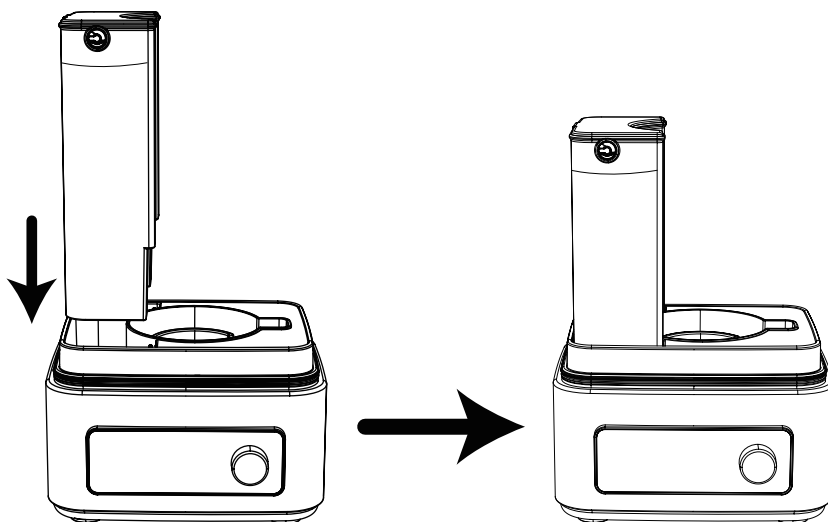
INSTALLATION AND PREPARATION FOR FIRST USE

⚠ WARNING

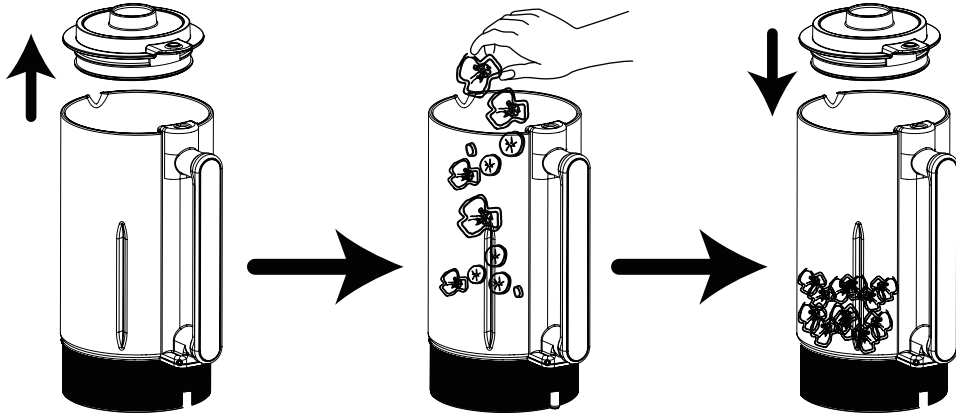
1. Place the **Motor Base** on a flat, dry, and heat-resistant surface.
 2. Ensure the surrounding area is well-ventilated and kept away from sinks, stovetops, and flammable materials.
 3. To prevent steam damage to furniture or cabinetry, maintain a clearance of at least **12 inches** from walls and cabinets.
-
1. Open the **Water Tank Lid** and fill the **Water Tank** with fresh water (purified or distilled water is recommended).
 2. Ensure the water level is at least **40 oz** (required for hot drinks, cleaning, and descaling).



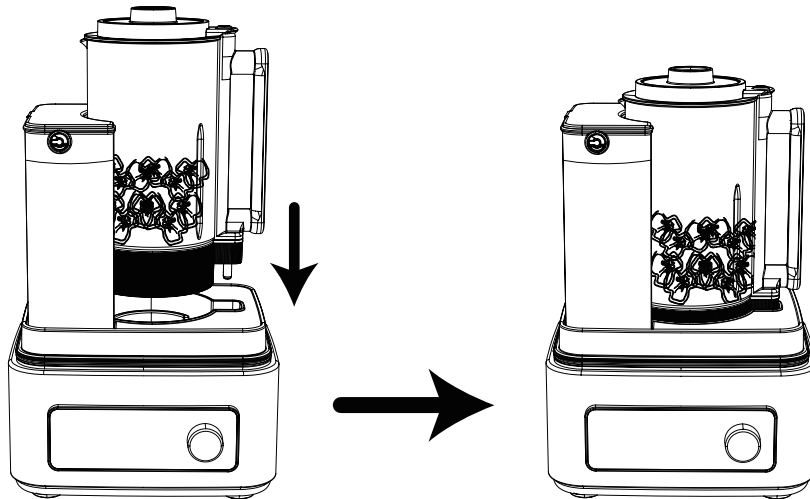
3. Align the **Water Tank** vertically with the mounting slot on the **Motor Base**, then press down firmly until it is securely in place.
- **Note: Only fill the Water Tank with fresh water. Do not add milk, broth, seasonings, or any other liquids.**



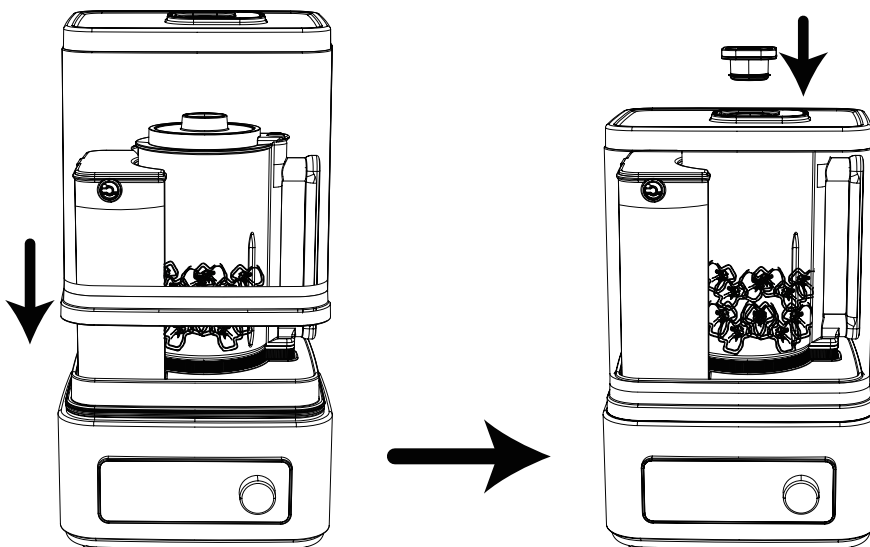
4. Open the **Blender Jar Lid** and add ingredients into the **Blender Jar** (do not exceed the maximum fill line).
5. Close the **Blender Jar Lid** and ensure it is sealed properly.



6. Align the **Blender Jar** with the mounting position on the **Motor Base** and press down gently until it is fully seated.



7. Align the **Sound Shield** with the **Motor Base** and place it downward, ensuring it fits snugly against the base.
8. Insert the **Sound Shield Cap** into the **Blender Jar Lid** and ensure it is securely positioned.



INITIAL CLEANING RECOMMENDATION

To remove any odors from shipping or storage, it is recommended to run a **Cleaning** cycle before the first use:

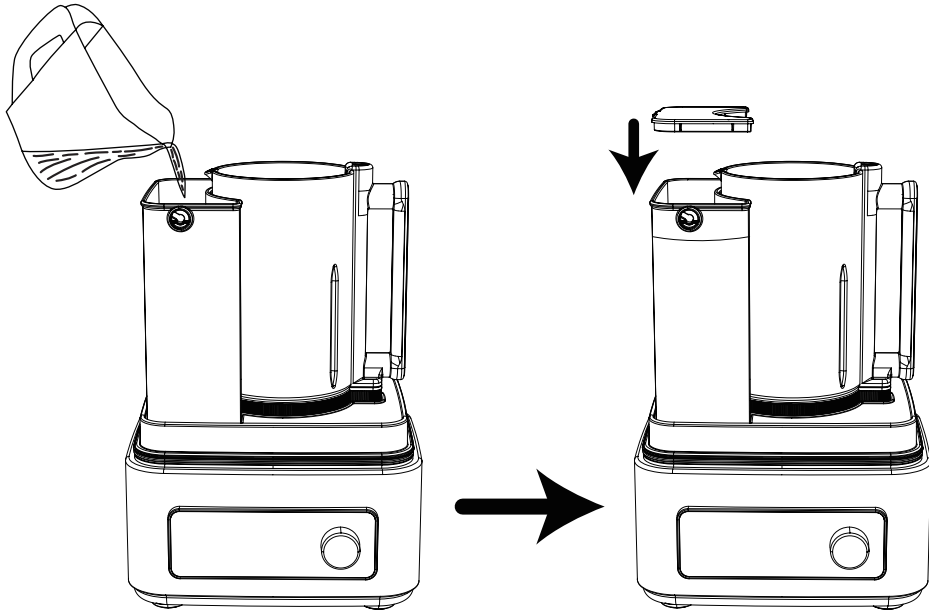
1. Fill the **Water Tank** with fresh water to the maximum fill line.
2. Select the **"Self-Cleaning"** function as described on page 15 and start the cycle.
3. Once finished, discard the remaining water in the **Blender Jar** and give it a quick rinse.

OPERATING INSTRUCTIONS

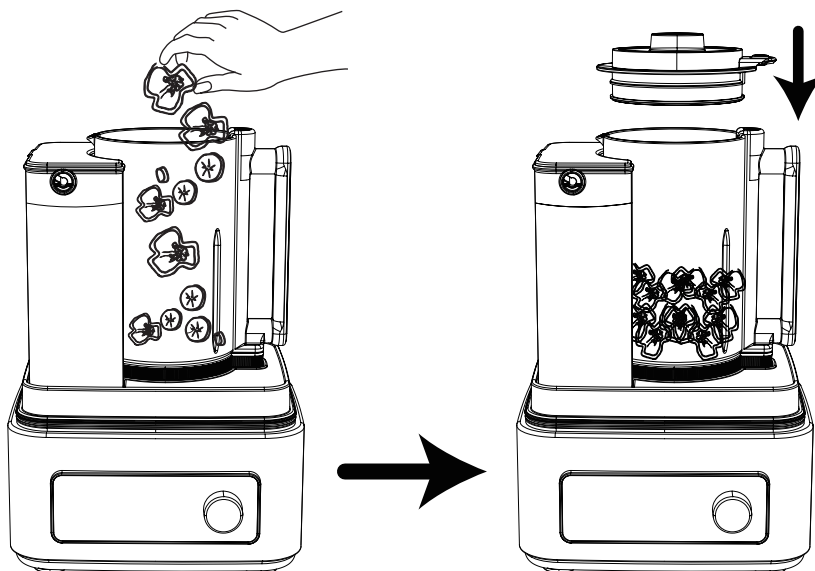
HOT DRINK FUNCTIONS

Applicable Functions: Soy Milk, Pureed Soup, Chunky Soup, Milk Based, Compote.

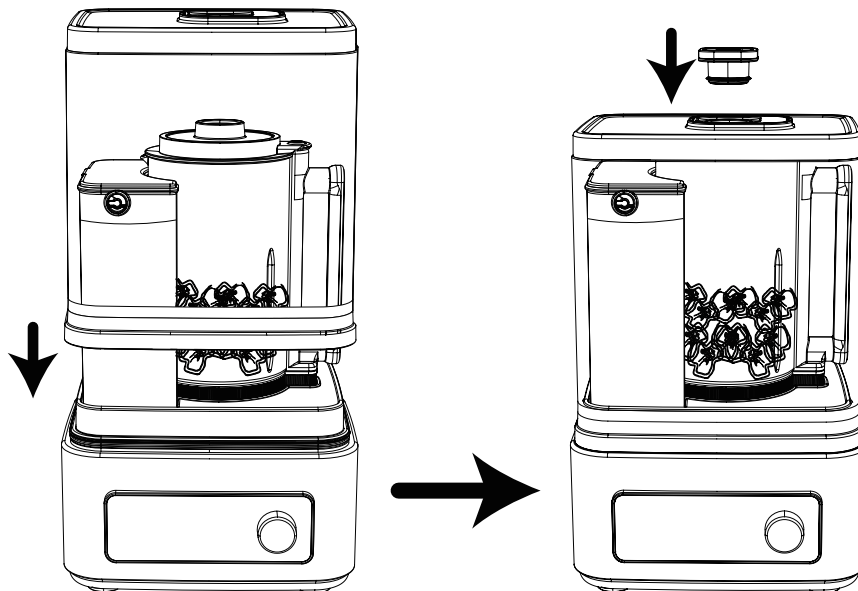
1. Ensure the **Water Tank** is properly installed and filled with fresh water to the maximum fill line (purified or distilled water is recommended).



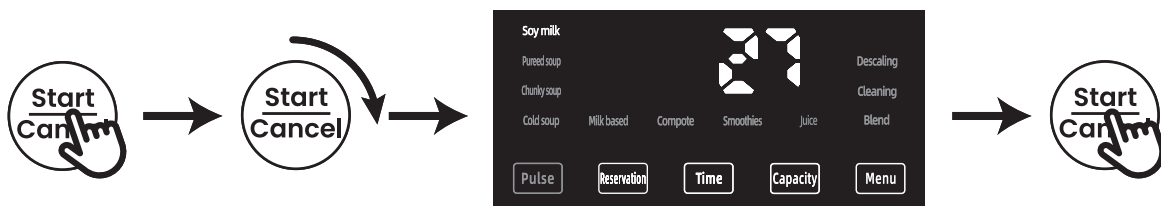
2. Add ingredients into the **Blender Jar (do not add water into the jar)**. Ensure the total amount does not exceed the maximum fill line.



- Secure the **Blender Jar Lid**, then install the **Sound Shield** and the **Sound Shield Cap**.



- Press the **START / CANCEL** knob to enter standby mode (the function indicators will light up).
- Rotate the **START / CANCEL** knob or press the **Menu** button to select the desired hot drink function (the selected function indicator will flash).
- If supported by the function, you may adjust **Reservation / TIME / CAPACITY** settings (optional).
- Press the **START / CANCEL** knob to start the program.



- A beep will sound once the program is complete. Please wait for the internal water pumping to finish and allow the unit to cool slightly before removing the jar to pour.

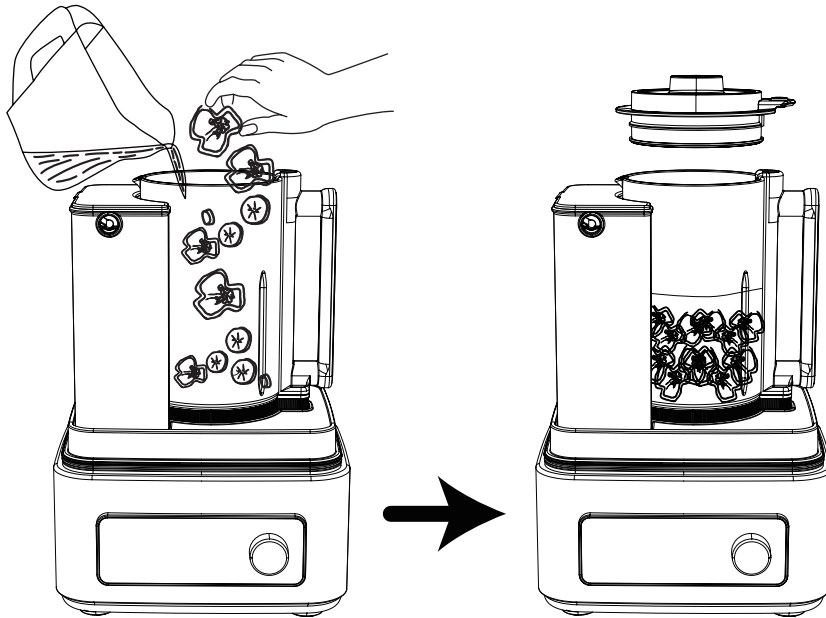
Note:

- Do not open the lid or remove the **Sound Shield** during operation. Intermittent pumping sounds are normal.
- Tip:** It is not recommended to cancel a program during a hot drink cycle. If cancellation is necessary, press **START / CANCEL** and wait for the pumping process to stop before removing the jar.

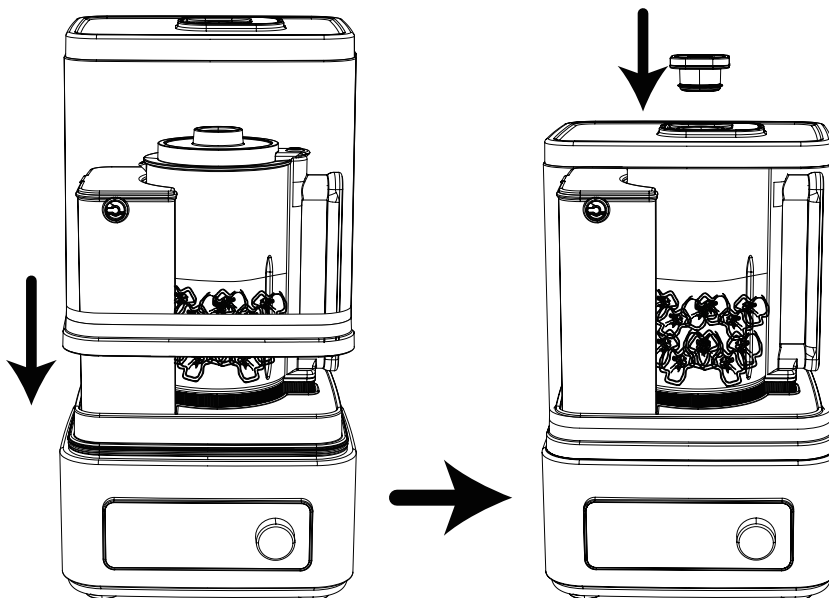
COLD DRINK FUNCTIONS

Applicable Functions: Cold Soup, Smoothies, Juice, Blend.

1. Add both ingredients and liquids (such as water, milk, or juice) together into the **Blender Jar**.
 - **Tip:** Keep the total volume between **20–51 oz.** (The unit will **not** automatically add water for cold drink functions).

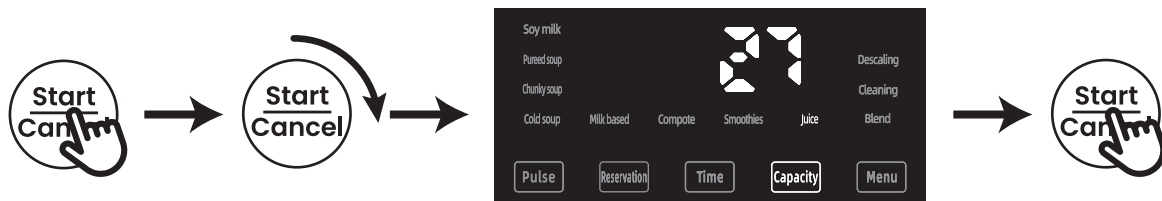


2. Secure the **Blender Jar Lid**, then install the **Sound Shield** and the **Sound Shield Cap**.



3. Press the **START / CANCEL** knob to enter standby mode.
4. Rotate the **START / CANCEL** knob or press the **Menu** button to select the desired cold drink function (the indicator will flash).
 - **Note:** Cold drink functions do not support **Reservation / TIME / CAPACITY** settings and do not involve heating.

- Press the **START / CANCEL** knob to start the program. A beep will sound when finished.



- Press **START / CANCEL** again if you need to manually stop or cancel the current program.

PROGRAM COMPLETION, REMOVAL, AND POURING

- Once the program is finished, the device will emit an audible beep, and the display will show “----”.
- After completing **Hot Drink**, **Cleaning**, or **Descaling** cycles, please wait for the device to finish its internal water pumping process and allow it to cool slightly.
- Remove the **Sound Shield Cap** first, followed by the **Sound Shield**. Stay clear of the steam vents during this process to avoid potential burns.
- Remove the **Blender Jar** and pour out the beverage (or discarded cleaning water) slowly. Use caution to prevent hot liquids from splashing.
- If you wish to start another cycle immediately, ensure the **Blender Jar** is correctly resealed and the **Water Tank** has a sufficient water supply.

CLEANING & MAINTENANCE

DAILY CLEANING

- Unplug the power cord and allow the appliance to cool down completely.
- Remove the **Blender Jar** and discard any remaining contents.
- Rinse the interior of the **Blender Jar** and the blade assembly with fresh water.
 - CAUTION: The blades are extremely sharp; do not touch them directly.**
- Stubborn Residue:** Soak with warm water and use the provided soft brush to gently scrub in a single direction.
- Wipe the exterior of the **Motor Base** with a damp, soft cloth.
 - WARNING: Never immerse the Motor Base, power cord, or plug in water or rinse them under running water.**

SELF-CLEANING

The **Cleaning** function uses high temperatures to wash the interior of the jar and the blade assembly.

- Fill the **Water Tank** with fresh water (Default: 27 oz, Maximum: 34 oz).
 - Do not add water directly into the jar.**
- Ensure the **Water Tank**, **Blender Jar**, **Lid**, and **Sound Shield** are properly installed and the device is in standby mode.
- Tap **Menu** to select the “**Cleaning**” function.
- Press **START / CANCEL** to begin the self-cleaning cycle.
- Once complete, the display will show “----” and a beep will sound. Remove the jar, discard the cleaning water, and rinse the jar briefly.
 - Tip:** If residue remains, you may run the **Cleaning** cycle a second time.

DESCALING

The **Descaling** function is used to remove limescale buildup and maintain heating performance.

- Fill the **Water Tank** with water and add an appropriate amount of food-grade citric acid solution.

2. In standby mode, tap **Menu** to select the “**Descaling**” function.
3. Press **START / CANCEL** to start the process.
4. Once complete, the display will show “----” and a beep will sound.
 - **Note:** After the unit has cooled completely, discard any remaining solution from the **Water Tank** and rinse the tank with fresh water.
5. **Final Rinse:** Refill the tank with fresh water and run the “**Descaling**” program once more to flush the internal pipes and ensure no descaling agent remains.

WATER TANK & LID MAINTENANCE

- The **Water Tank** and **Blender Jar Lid** can be rinsed under running water and briefly submerged for cleaning. Dry them thoroughly with a cloth and air-dry in a cool place.
- The use of purified or distilled water is highly recommended to minimize limescale buildup.
- **DO NOT** use steel wool, abrasive cleaners, or corrosive liquids to clean any part of the appliance. Troubleshooting (Q&A)

If you encounter any issues, please refer to the common questions below. If the problem persists, stop using the appliance and contact customer service.

Q1: The appliance will not start or there is no response. What should I do?

- **Possible Causes:** The device is not in standby mode; the **Water Tank, Blender Jar, Lid,** or **Sound Shield** are not correctly installed; or the power outlet is not functioning.
- **Solutions:**
 1. Check the power outlet and ensure the power cord is securely plugged in.
 2. Press the **START / CANCEL** knob to enter standby mode.
 3. Reinstall the **Water Tank, Blender Jar, Lid,** and **Sound Shield,** ensuring each component is pressed firmly into place.

Q2: Why is there liquid dripping or hot liquid leaking during a hot drink cycle?

- **Possible Causes:** The program was cancelled mid-cycle or the **Blender Jar** was removed too early.
- **Solutions:**
 1. Try not to cancel a program once a hot drink cycle has started.
 2. If you must cancel, wait until the internal water pumping process has completely stopped.
 3. Allow the unit to cool slightly before attempting to remove the jar.

Q3: The finished drink is not smooth or has a coarse texture. How can I fix this?

- **Possible Causes:** Ingredients are cut too large or are too hard; the jar is overloaded beyond the max fill line.
- **Solutions:**
 1. Cut ingredients into smaller, more manageable pieces.
 2. Reduce the total amount of ingredients to stay below the maximum capacity line.
 3. Select a more appropriate function for the ingredients used, or use the PULSE button for additional short-burst blending.

Q4: There is stubborn residue at the bottom of the jar that is hard to clean. What should I do?

- **Possible Causes:** Thick or sticky ingredients have built up on the bottom or around the blades.
- **Solutions:**
 1. Soak the interior of the jar with warm water for a few minutes.
 2. Use the provided soft brush to scrub the bottom in a single direction.
 3. Run the **Cleaning** (Self-Cleaning) cycle as described in the maintenance section.

WARRANTY

Product Name	Model Number	Default Warranty Period	For your own reference, we strongly recommend that you record your order number and date of purchase.
HOT & COLD NUTRITIONAL BLENDER	TL-1215D	2 years	

TERMS & POLICY

AIRMSSEN warrants all products to be of the highest quality in material, craftsmanship, and service, effective from the date of purchase to the end of the warranty period.

AIRMSSEN will replace any product found to be defective due to manufacturer flaws based on eligibility. Refunds are available within the first 30 days of purchase. Refunds are only available to the original purchaser of the product. This warranty extends only to personal use and does not extend to any product that has been used for commercial, rental, or any other use in which the product is not intended for. There are no warranties other than the warranties expressly set forth with each product.

This warranty is non-transferrable. AIRMSSEN is not responsible in any way for any damages, losses, or inconveniences caused by equipment failure by user negligence, abuse, or use noncompliant with the user manual or any additional safety or usage warnings included in the product packaging and manual.

THIS WARRANTY DOES NOT APPLY TO THE FOLLOWING:

- Damage due to abuse, accident, alteration, misuse, tampering, or vandalism.
- Improper or inadequate maintenance.
- Damage in return transit.
- Unsupervised use by children under 18 years of age.

AIRMSSEN assume no liability for damage caused by the use of the product other than for its intended use or as instructed in the user manual. Some states do not allow this exclusion or limitation of incidental or consequential losses, so the foregoing disclaimer may not apply to you. This warranty gives you specific legal rights and you may also have other rights, which may vary from state to state.

ALL EXPRESSED AND IMPLIED WARRANTIES, INCLUDING THE WARRANTY OF MERCHANTABILITY, ARE LIMITED TO THE PERIOD OF THE LIMITED WARRANTY.

DEFECTIVE PRODUCTS & RETURNS

Should your product prove defective within the specified warranty period, please contact Customer Support via service@airmsen.com with your order number.

DO not dispose of your product before contacting us. Once our Customer Support Team has approved your request, please return the unit with a copy of your invoice and order number.

CUSTOMER SUPPORT

WE'RE HERE TO HELP!

If you encounter any issues or have any questions regarding your new product, please contact our helpful Customer Support Team. Your satisfaction is our goal!

CUSTOMER SUPPORT

Email: service@airmsen.com

Telephone: **1-844-725-2333**

*** To best serve you, our AIRMSSEN Representatives are available to answer your calls Monday to Friday, 10:30 AM – 6:30 PM EST.**

If you need to purchase product accessories, please visit www.airmsen.com.

*** Please have your order confirmation number ready before contacting Customer Support.**

AIRMSSEN

QUESTIONS OR COMMENTS?

EMAIL	OR VISIT US ONLINE AT
service@airmsen.com	www.airmsen.com

