

# 说明书

## 版式设计要求:

- 字体：标题为Myriad Pro SemiBold，内容为 Myriad Pro light；
- 上下页边距为9mm，左右边距为8mm；；
- 标注说明书长宽尺寸，单位mm。

## Installation instructions

### Refrigerator water filter

#### A replacement for the following water filters:

##### LG® filters

LT1000P®, LT1000PC, LT1000PCS, LT-1000PC, ADQ74793501, MDJ64844601

##### Sears®/ Kenmore® filters

46-9980, 9980, ADQ74793502



Tested and Certified by NSF International against **NSF/ANSI Standard 42** in model EFF-6046S for the reduction of the claims specified on the Performance Data Sheet, and to **NSF/ANSI 372 (≤0.25% lead)**.

#### Installation instructions

Before installation:

- Shut off the cold-water supply to the refrigerator before installation. Turn on the refrigerator water dispenser to release water pressure, letting water drain from the pipe completely.
- Turn the connector back to the normal position as shown in the **figure 1**.

**Tips:** If the installation fails, the connector is not fully back in position. Contact us for help.

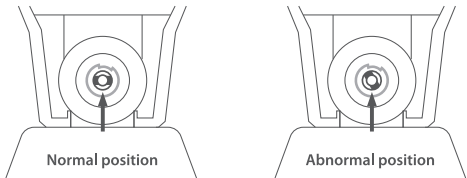


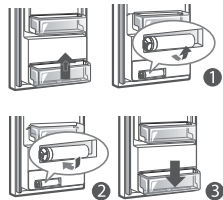
figure 1

- It is normal for black carbon fines (particles) to appear on the outside of your filter. This happens when the filter is jarred in shipping. It is safe to simply wipe it off.
- The filter connectors are larger to prevent leaks. You might have to twist the filter hard to make sure the connection is secure.

6046S-42

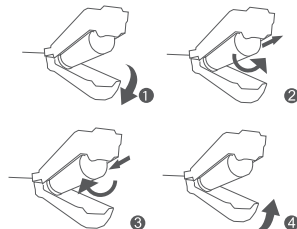
#### For filters on the side door of fridge:

- Lift up and remove the lower door bin. Swing the right end of the water filter out of the compartment and then grasp and rotate the filter counterclockwise to remove it from the filter head.
- Insert the new filter into the filter head and rotate it clockwise. Swing the filter back into the compartment.
- Refit the door bin.
- Reset your “change filter” light (if your fridge has one).



#### For filters on the upper corner of fridge:

- Push the ends of cover to open it.
- Move the old cartridge downward and then turn the cartridge counterclockwise.
- Insert the new cartridge and turn it clockwise until you hear a “click” sound.
- Raise the cartridge up and close the cover.
- Flush 2.5 gallons (approximately 5 minutes) through filter before use. Check for leaks.



#### Resetting your filter indicator:

**Note:** These are the most common filter reset instructions. If the instructions don't work for your refrigerator brand, see the documentation that came with your refrigerator.

Refrigerator brand	Instructions
LG® systems	Press and hold the reset water filter button on the dispenser for 3 seconds.
Kenmore® systems	The filter reset for Kenmore refrigerators varies by model. See the documentation that came with your refrigerator.

#### Storage and maintenance:

- Replace your filter every 6 months or 200 gallons to prevent bacteria and fungus growth in your filter, supply lines, and storage tank.
- Keep your unused filters in a cool, dark, and dry place until you need them.

#### Performance data sheet

System Model No.: **EFF-6046S**

#### Operating specifications:

Operating Temperature: 33 -100°F/0.6 - 38°C  
Working Pressure: 20 -100 psi/140 - 689 kPa  
Rated Capacity: 200 gallons/757 litres  
Flow Rate: 0.5 gpm/1.9 lpm

#### Substance reduction:

The system has been tested and certified by the NSF International according to NSF/ANSI Standard 42 for the reduction of the substances listed below. The concentration of the indicated substances in water entering the system was reduced to a concentration less than or equal to the permissible limit for the water leaving the system, as specified by NSF/ANSI Standard 42. While testing was performed under standard laboratory conditions, actual performance may vary.

Substance	Inf.Average	NSF Specified Challenge Concentration	Ave. % Reduction	Average Product Water Concentration	Max Permissible Product Water Concentration	NSF Reduction Requirements	NSF Test Report
Chlorine Taste and Odor	2.1 mg/L	2.0 mg/L ± 10%	97.6%	0.05 mg/L	N/A	≥50%	J-00356469



Do not use with water that is microbiologically unsafe or of unknown water quality without adequate disinfection before or after the system. Systems certified for cyst reduction may be used with disinfected water that may contain filterable cysts.

- If you do not use your water dispenser for more than four days, run two gallons of water before using it to prevent bad tasting water.

#### Frequently asked questions:

**Q:** Why is it difficult to twist the new filter into the filter housing?

**A:** The connector may expand because of water pressure. Therefore, it is recommended you push the new filter in with a little bit of force, but not too hard. Then turn it clockwise.

**Q:** Do I need to flush the filter after installation?

**A:** After installation, it is highly recommended you run water for a few minutes before using. Water filters are made from advanced coconut carbon block, so there are some carbon fines in the filter. Flushing removes the carbon fines to produce clean water.

**Q:** Must the filter be changed every 6 months?

**A:** Yes, you must replace the filter every six months or sooner if water flow is reduced or if there is heavy sediment / rust present. Over-used filters will degrade the filtration performance.

#### ⚠ Warning:

To reduce the risk of property damage due to water leakage, this filter MUST be installed in accordance with the manufacturer's specifications and instructions. This filter unit must be replaced every 200 gallons or 6 months. Failure to follow instructions and operating specifications will void your warranty. Further, manufacturer assumes no responsibility or liability for damages arising out of misuse of the product.

LG® is a registered trademark of LG Corp.

LG® is used for reference purposes only.

Kenmore® is a registered trademark of KCD IP, LLC.

Kenmore® is used for reference purposes only.

\*The service life mentioned above is subject to chlorine reduction.  
Actual result varies according to the local water quality.

#### Manufacturer Technical Support

Tel: 1-888-352-3558 (U.S.)

E-mail: service@water-filter.com

Made in China V040

Qingdao Ecopure Filter Co., Ltd.



图像颜色请依据数码稿印刷  
请不要擅自变更来稿件，如须修改，请联系伊可普做有关决定

#### 印刷品技术要求 IMPORTANT PRINTING CAUTION

- 印刷要求 ☐覆光膜 ☐覆亚膜 ☐UV油 ☐吸塑油 ☐过油 ☐丝印
- 材质要求 80g双胶纸，双面印刷
- 颜色要求 单黑印刷
- 版面要求 印刷品文字线条印迹清晰、无重影;印刷品套印准确无偏色、溢墨、指痕等;印刷品上光层均匀、光亮、牢固无粘连;覆膜表面平整、无褶皱、光泽度好;纸张材质正确，切边整齐、压线深浅适中、洁净、无斑点和条痕。



#### 青岛伊可普电器有限公司包材设计图纸

品牌 BRAND NAME.		工厂型号 ITEM NO.	EFF-6046
物料编码 INNER CODE.	03070006046A542	版本号 VERSION.	V040
包材文件名称 FILE NAME.	03070006046A542 EFF-6046S-42-说明书-V040		
规格 MEASURE.	210*140mm	页数 PAGE.	4P
设计负责人 DWG.BY	张鑫龙	审核日期 VERIFY DATE.	
变更日期 REVISIONS.	2021.11.24		
变更描述 DESCRIPTION.	1. 增加客服24H7D365信息		