

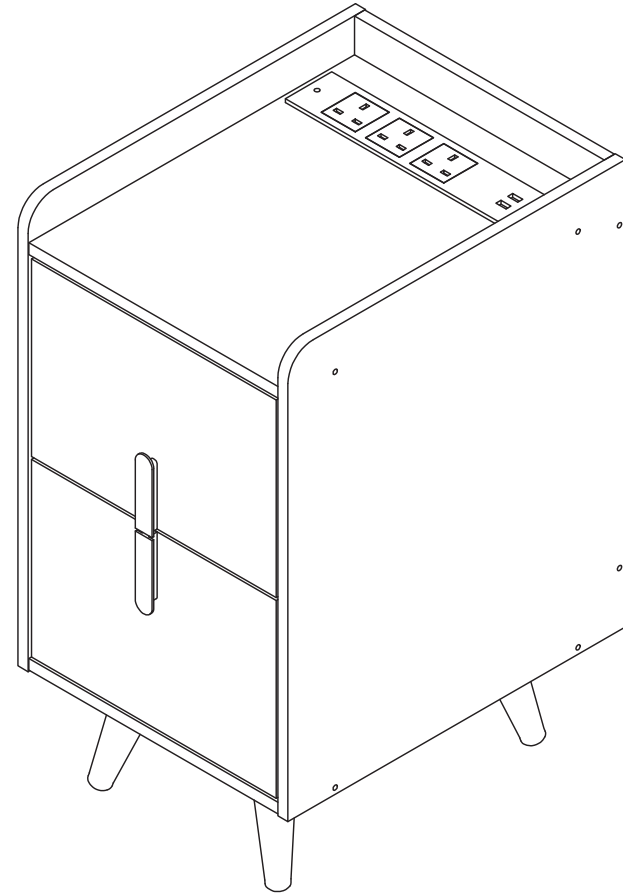


Bsdside Table  
**HU10585GB**



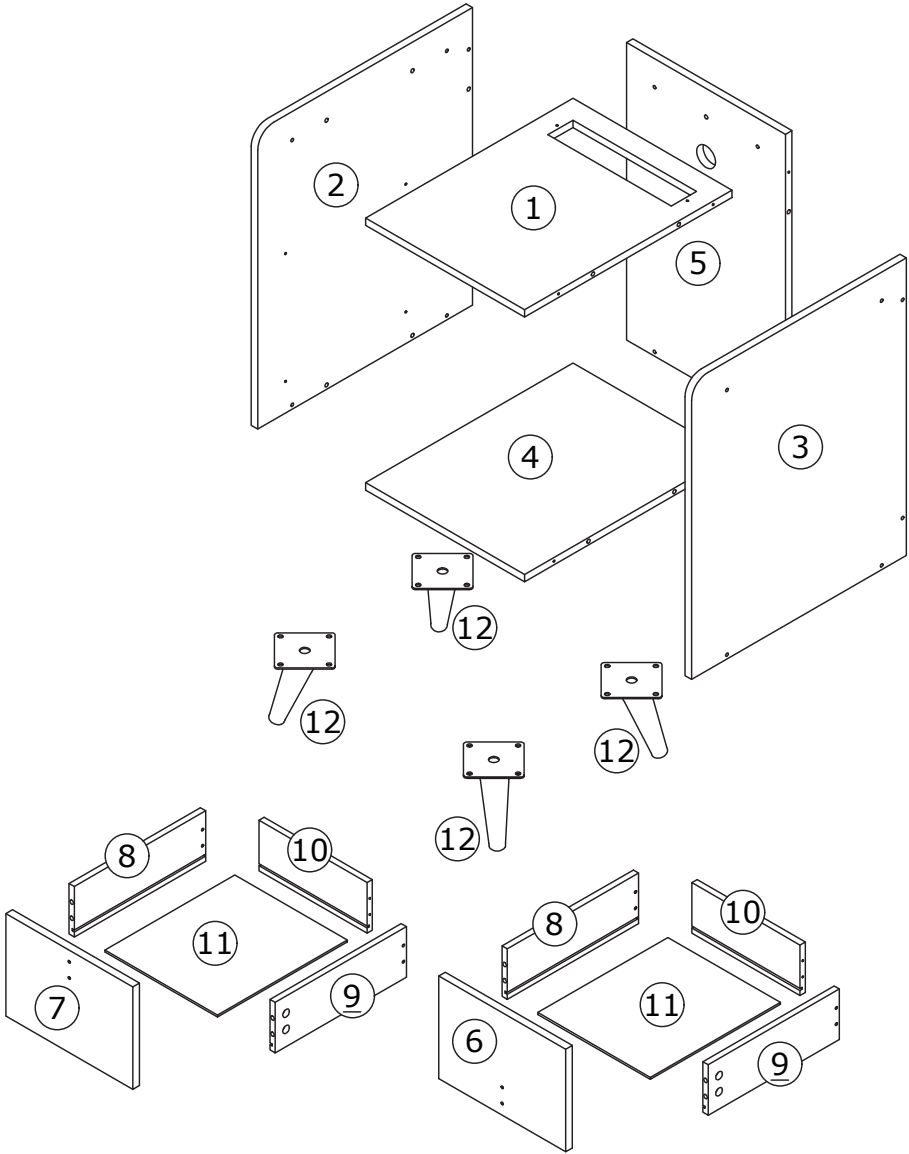
## Before You Start

- ⚠ Please read all instructions carefully.
- ⚠ Retain instructions for future reference.
- ⚠ Separate and count all parts and hardware.
- ⚠ Read through each step carefully and follow the proper order.
- ⚠ We recommend that, where possible, all items are assembled near to the area in which they will be placed in use, to avoid moving the product unnecessarily once assembled.
- ⚠ Always place the product on a flat, steady and stable surface.
- ⚠ Keep all small parts and packaging materials for this product away from babies and children as they potentially pose a serious choking hazard.

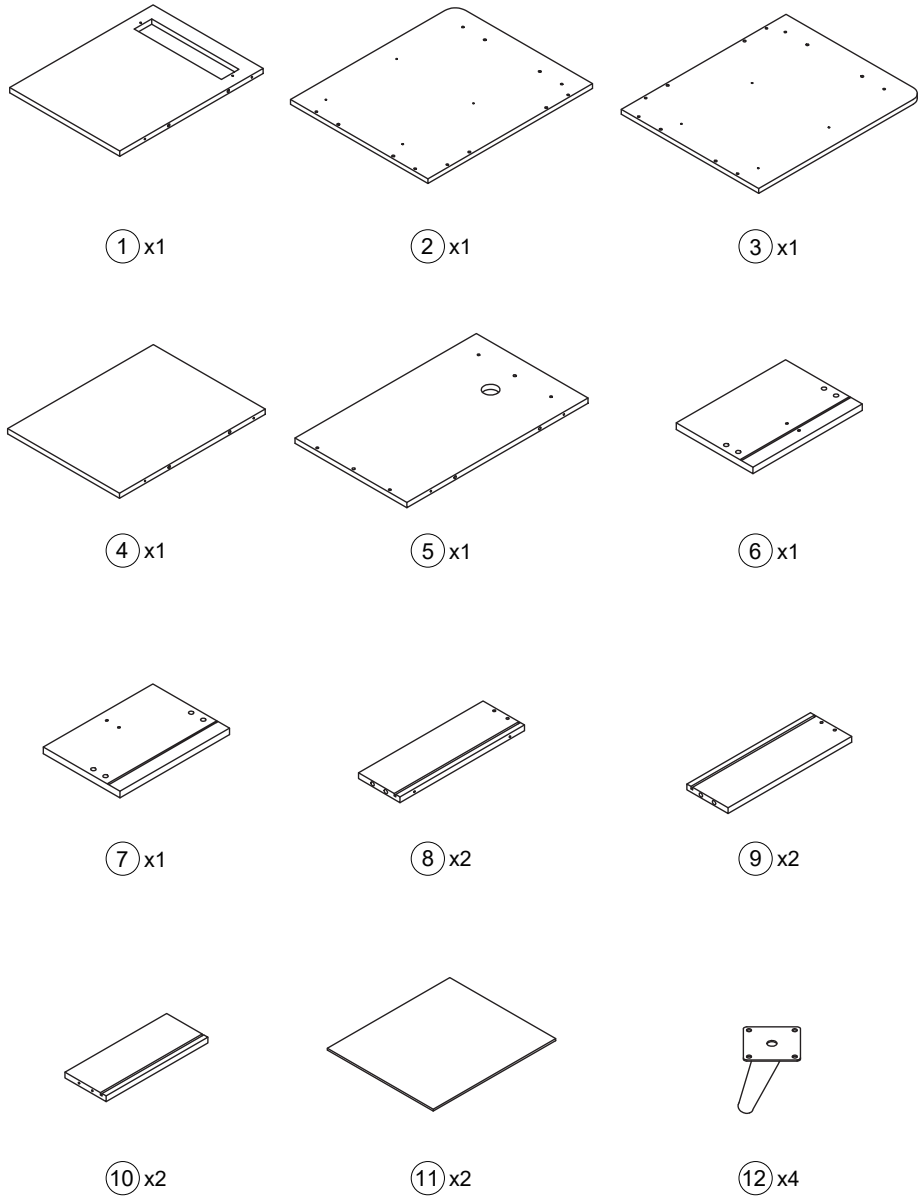


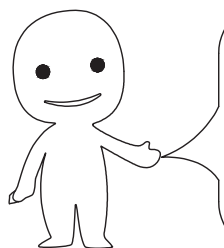
Bdside Table

Board Identification

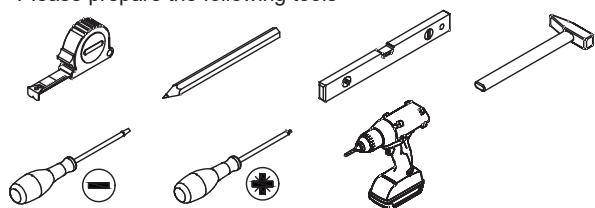


PARTS LIST

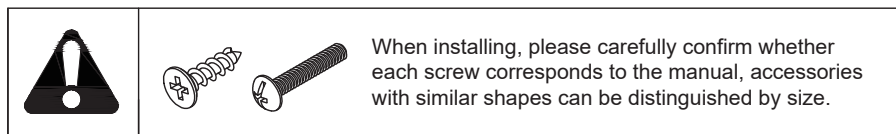
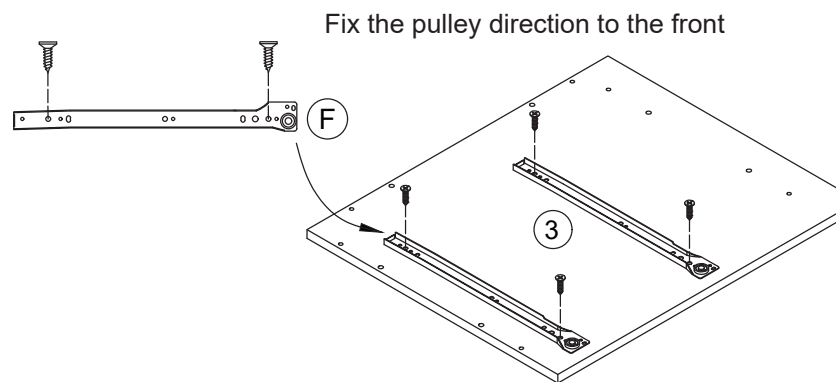
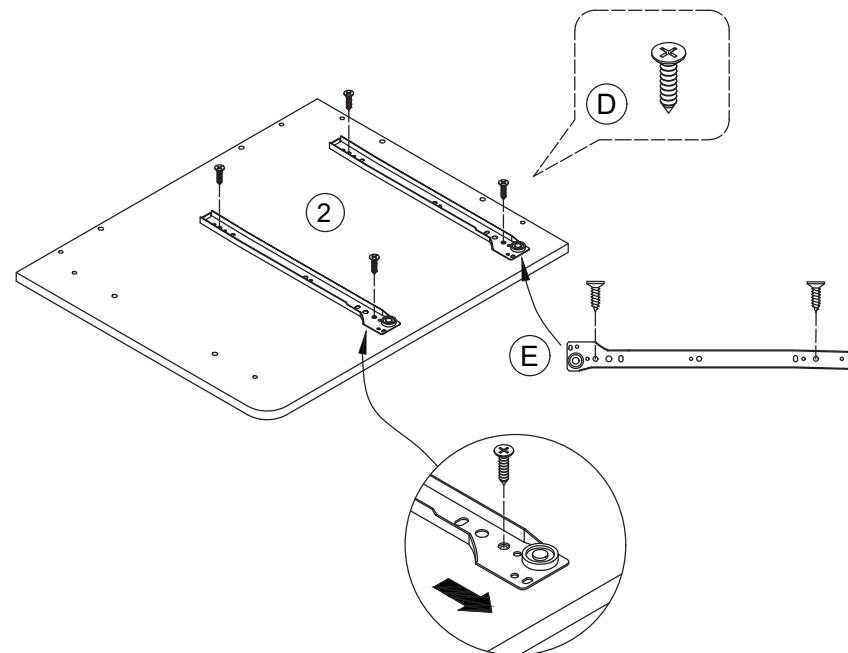




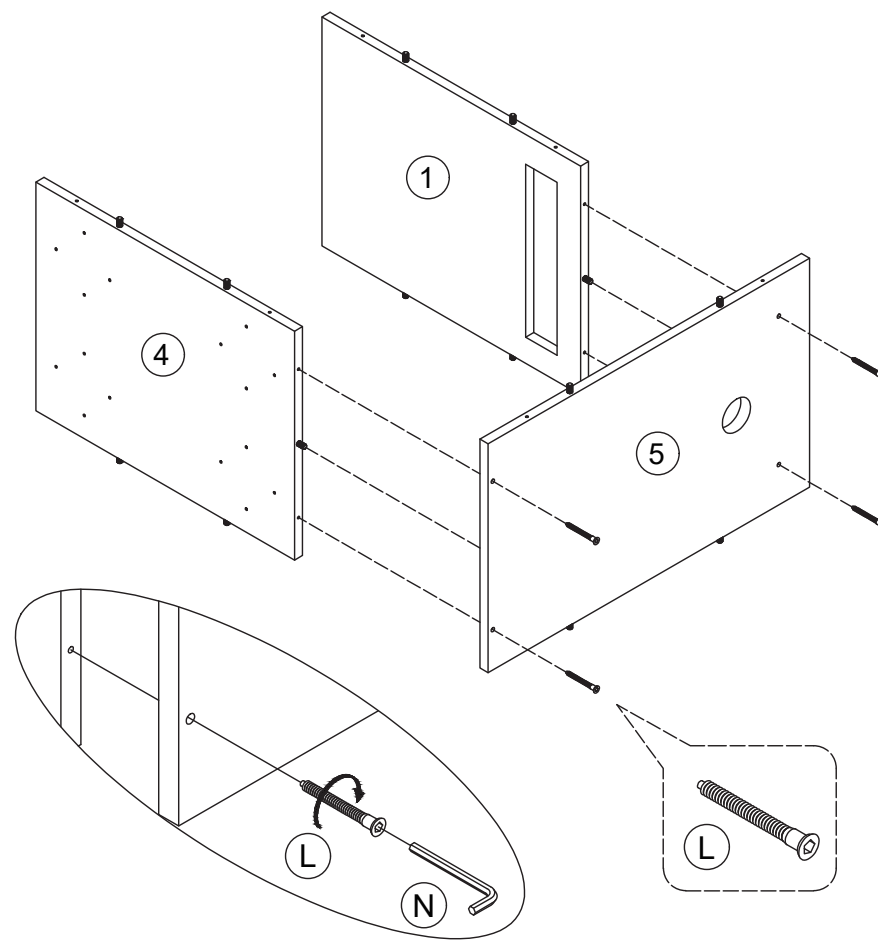
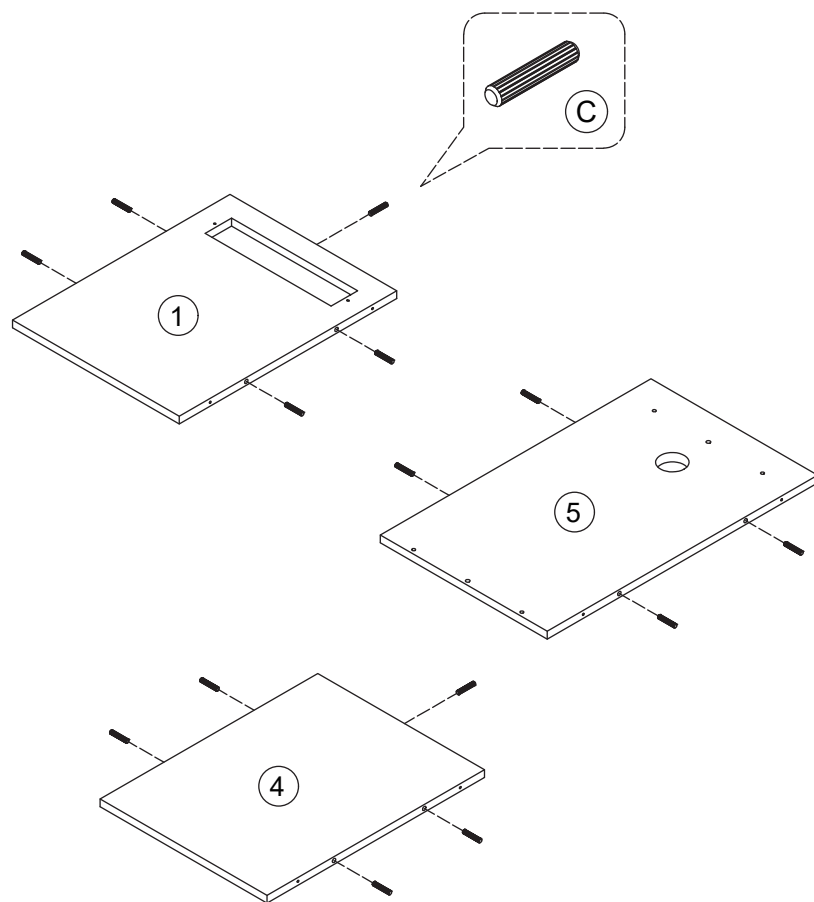
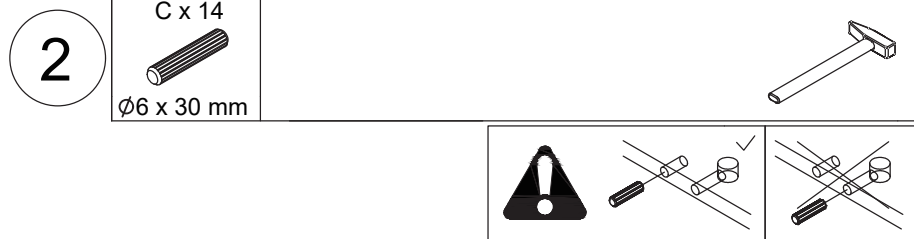
Please prepare the following tools




1

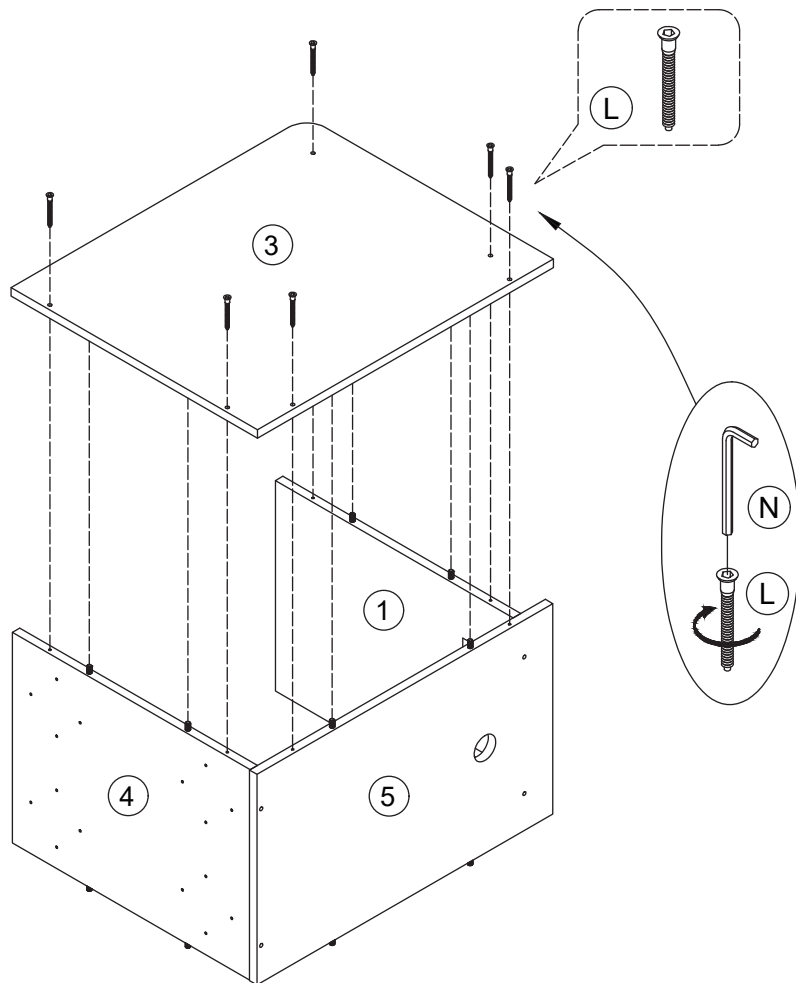


<p>A x 8+1</p> <p>Ø15 x 9.5 mm</p>	<p>B x 8+1</p> <p>Ø7 x 31 mm</p>	<p>C x 14+2</p> <p>Ø6 x 30 mm</p>	<p>D x 34+2</p> <p>Ø3.5 x 12 mm</p>
<p>E x 2</p>	<p>F x 2</p>	<p>G x 2</p>	<p>H x 2</p>
<p>I x 8+1</p> <p>Ø4 x 35 mm</p>	<p>J x 2</p>	<p>K x 4</p> <p>Ø4 x 18 mm</p>	<p>L x 16+2</p> <p>Ø5 x 40 mm</p>
<p>M x 1</p>	<p>N x 1</p>		




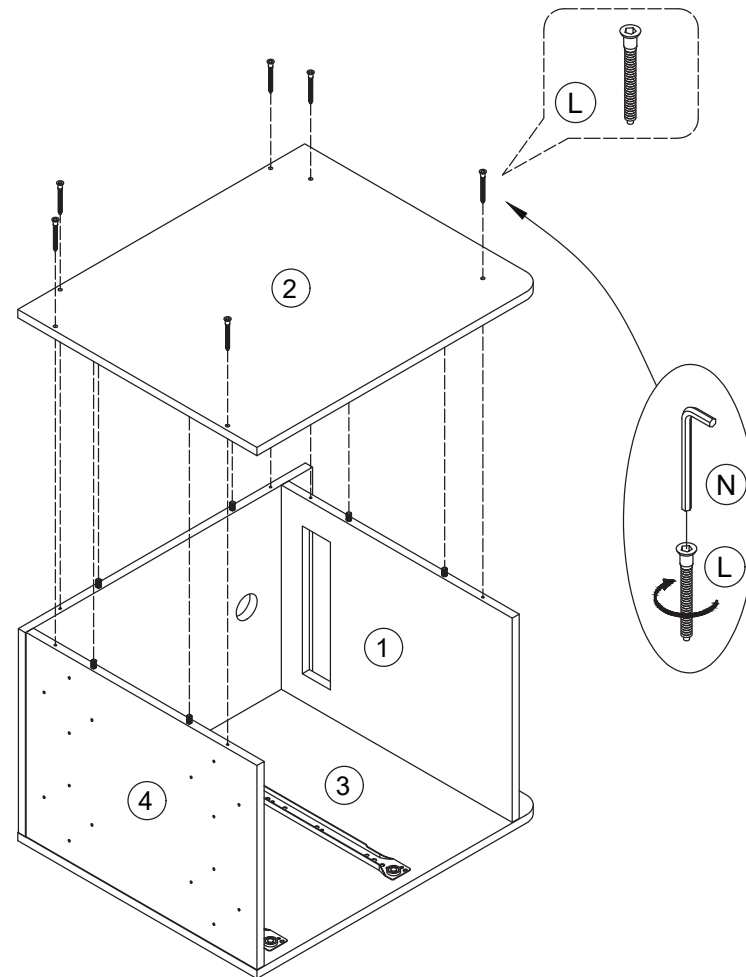
4

L x 6  
  
 Ø5 x 40 mm

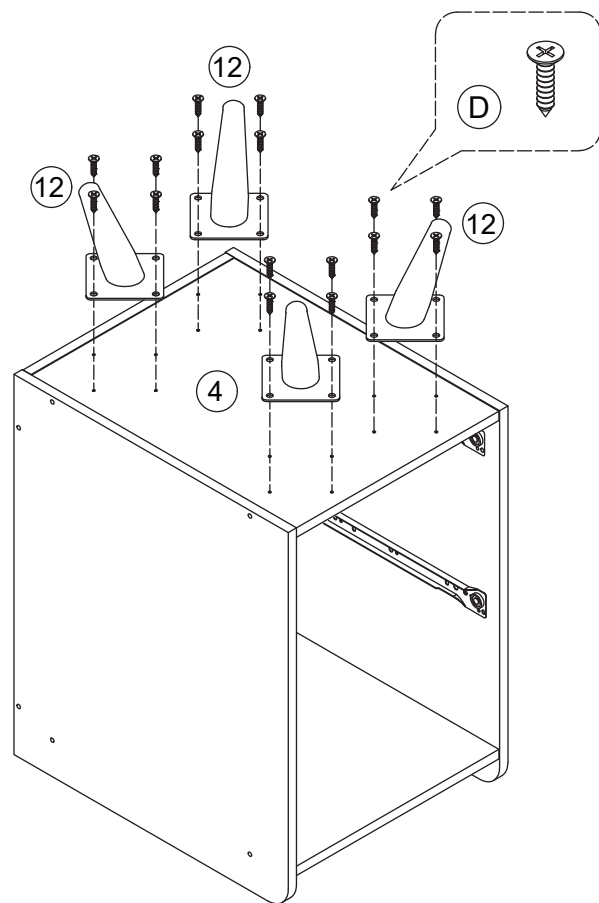
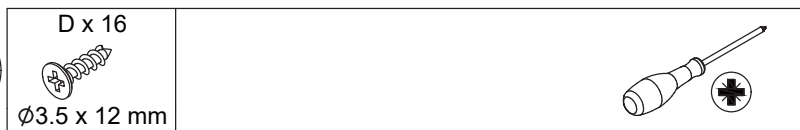


5

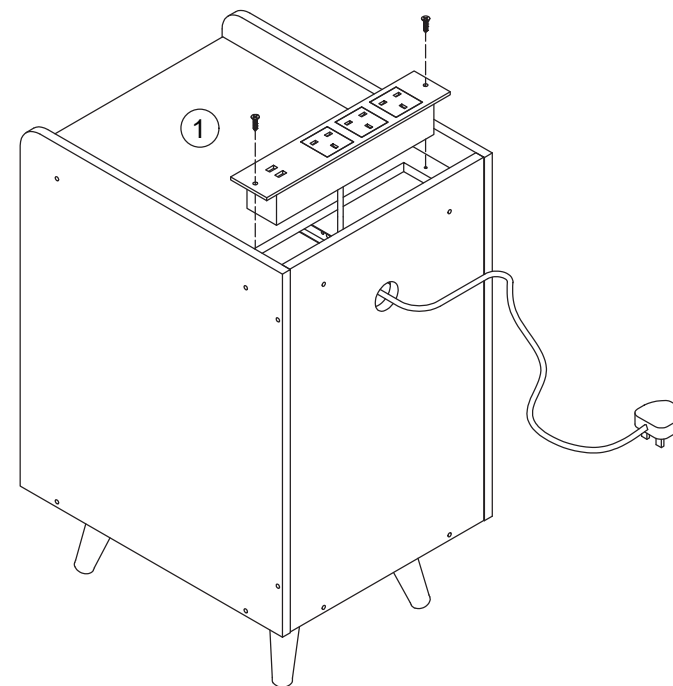
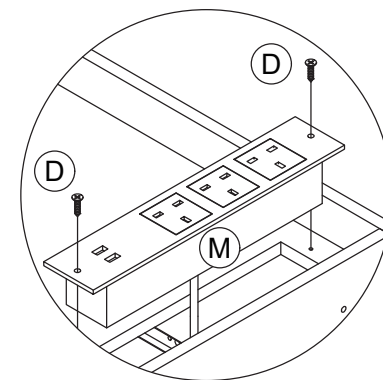
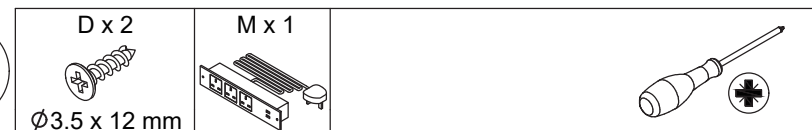
L x 6  
  
 Ø5 x 40 mm

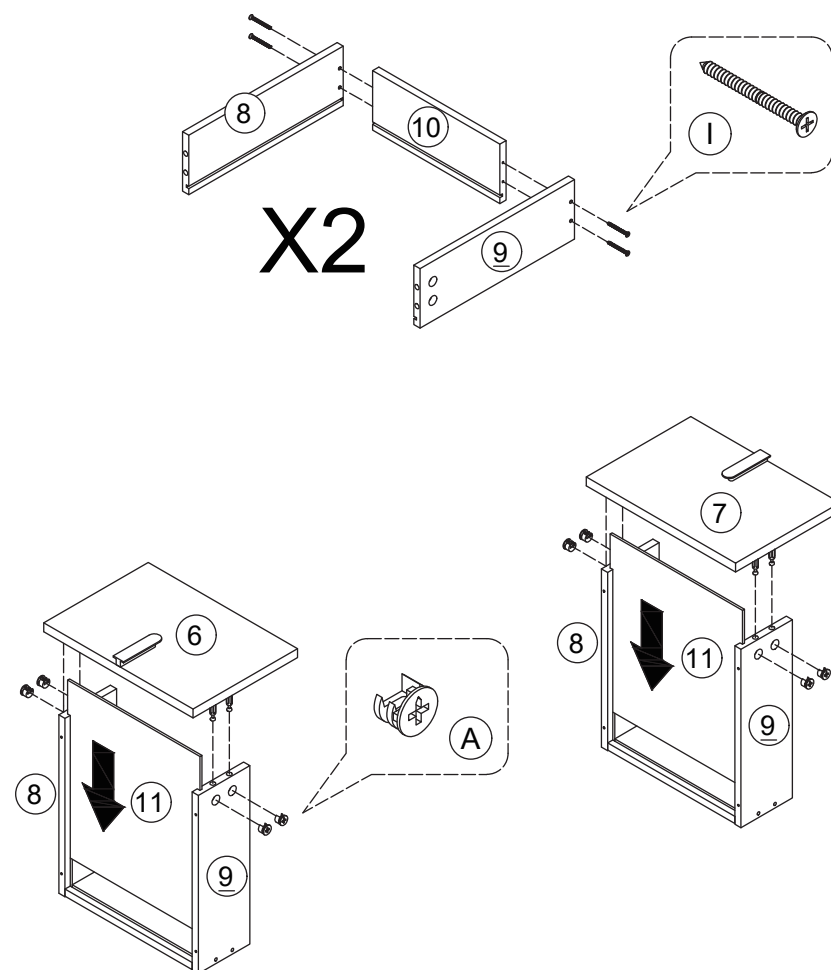
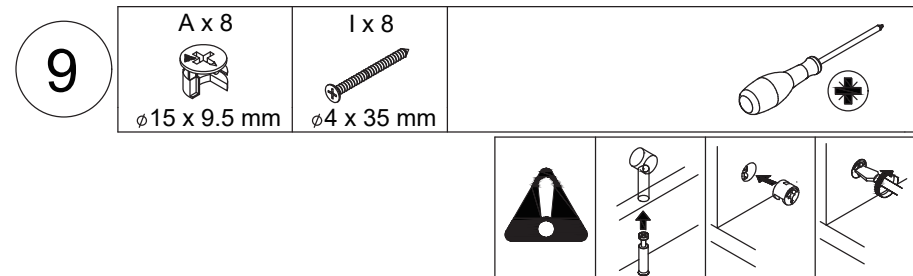
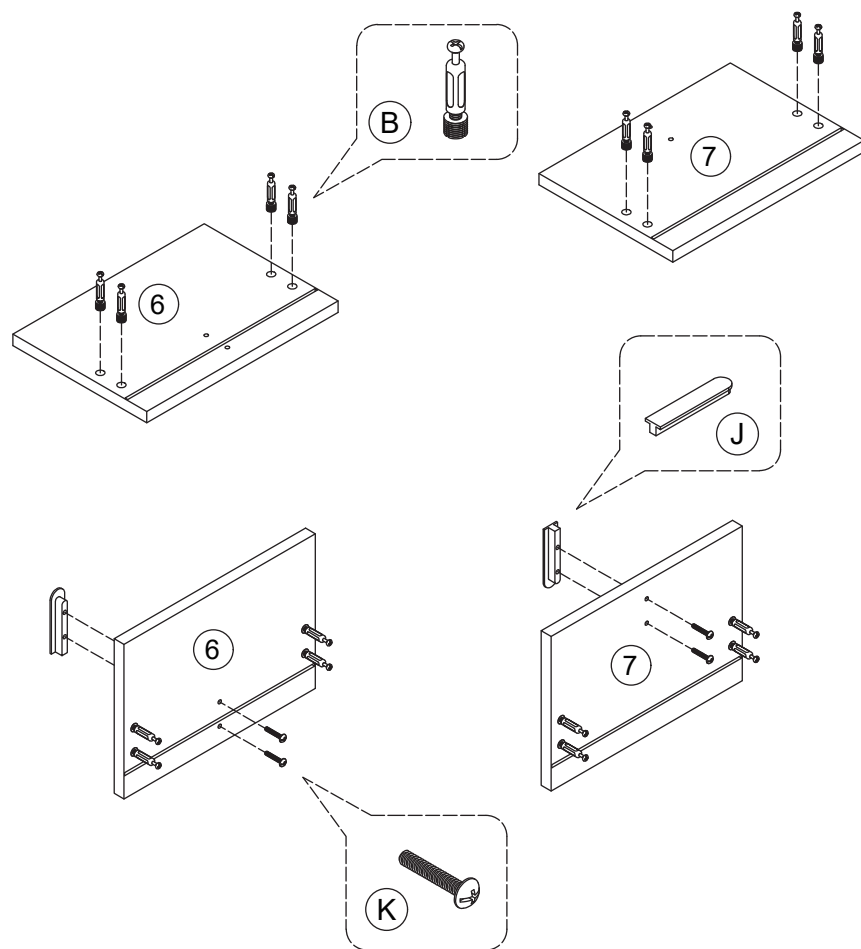
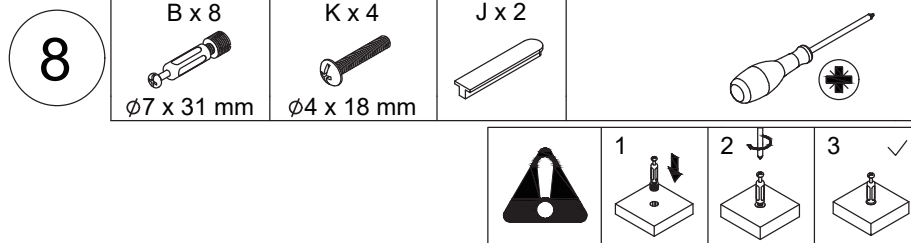


6



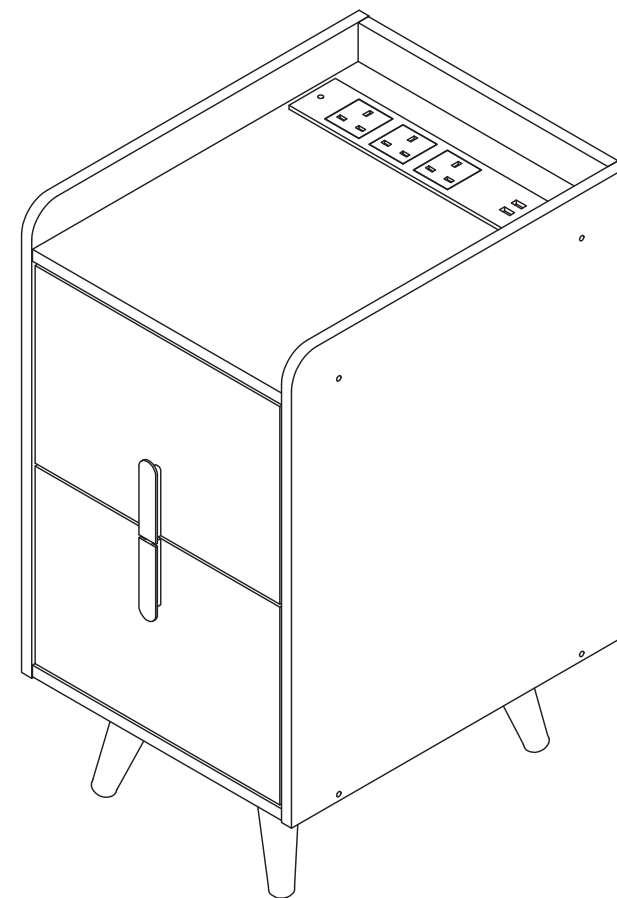
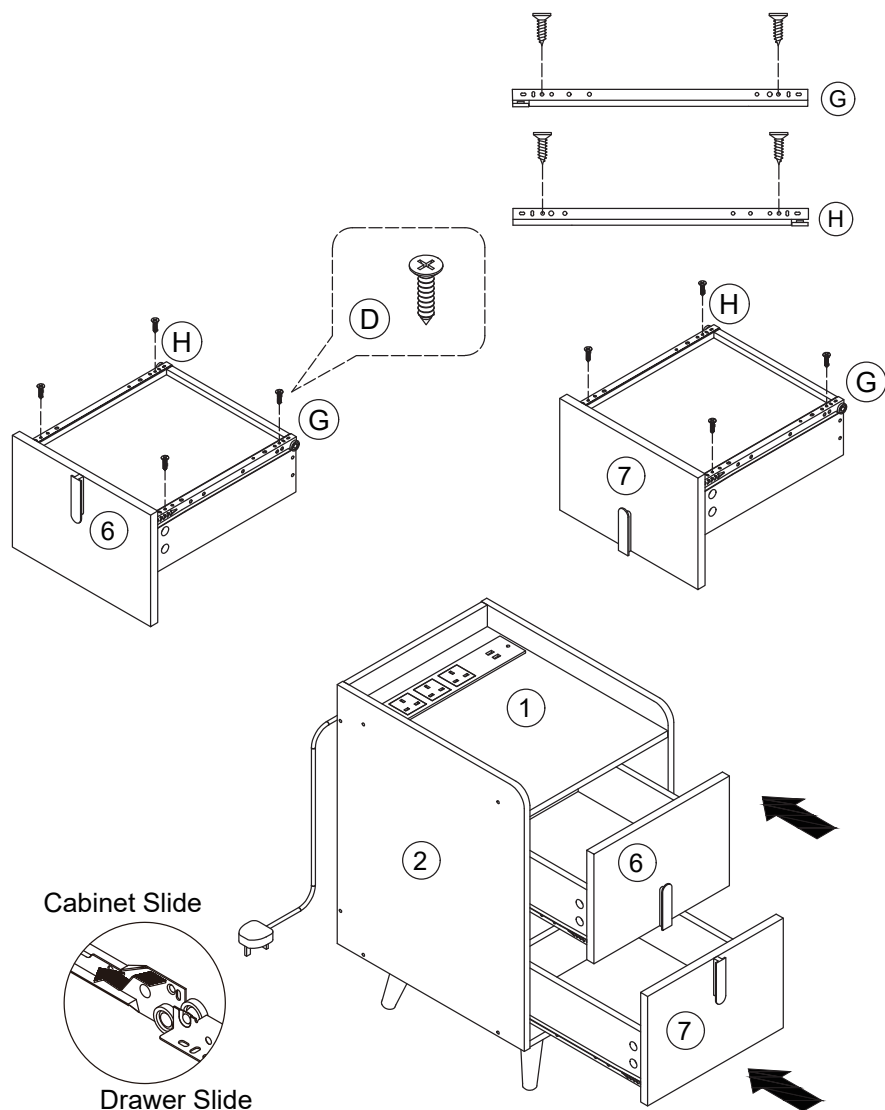
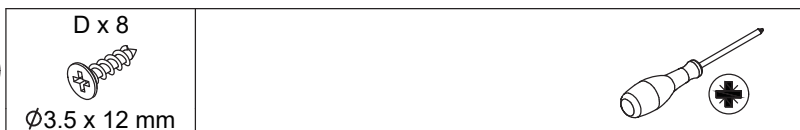
7







10





## Return / Damage Claim Instructions

- ⚠ **DO NOT discard the box / original packaging.**  
In case a return is required, the item must be returned in original box. Without this your return will not be accepted.
- ⚠ **Take a photo of the box markings.**  
A photo of the markings (text) on the side of the box is required in case a part is needed for replacement. This helps our staff identify your product number to ensure you receive the correct parts.
- ⚠ **Take a photo of the damaged part (if applicable).**  
A photo of the damage is always required to file a claim and get your replacement or refund processed quickly. Please make sure you have the box even if it is damaged.
- ⚠ **Send us an email with the images requested.**  
Email us directly from marketplace where your item was purchased with the attached images and a description of your claim.