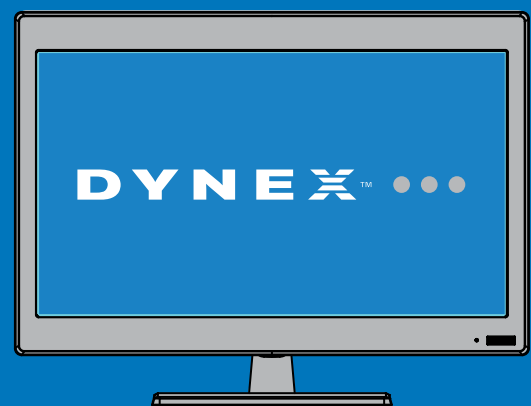


# QUICK SETUP GUIDE

16" LED TV  
DX-16E220NA16

## Thank you

for purchasing this state-of-the-art Dynex television. We hope you enjoy the quality and reliability of this television for years to come.



DYNEX

## FIND YOUR USER GUIDE ONLINE!

We are going green so a copy of your User Guide is not provided in the box but is available online. Go to [www.dynexproducts.com](http://www.dynexproducts.com), click **Support & Service**, enter **DX-16E220NA16** in the box under **Manual, Firmware, Drivers & Product Information**, then click **Search**.

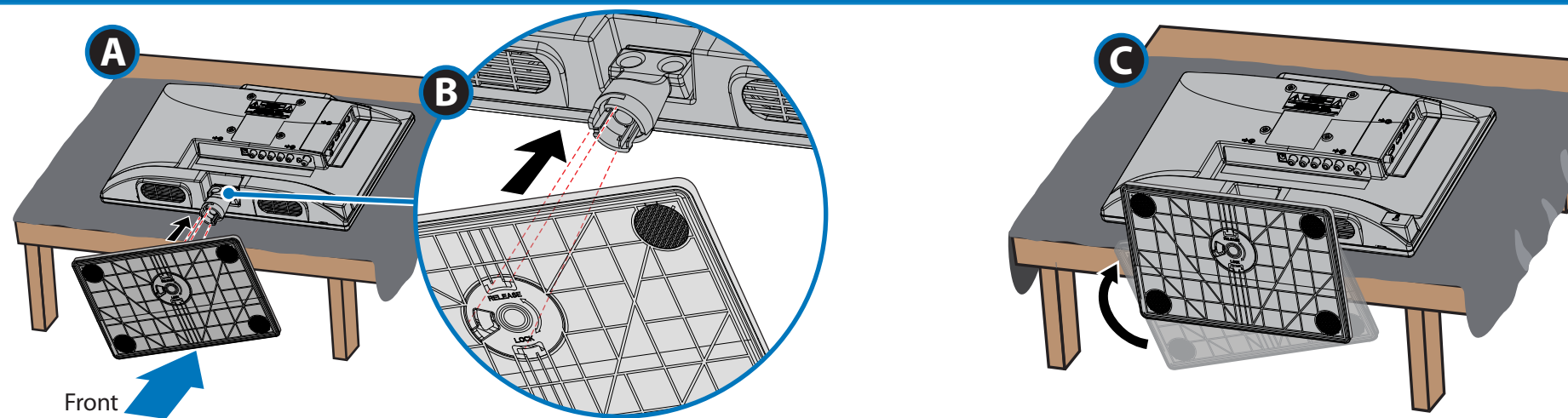


## 1 START HERE

### How do I attach the stand to my TV?

**You'll need:** Phillips screwdriver and a soft surface to lay the TV on.

- Carefully place your TV face-down on a cushioned, clean surface.
- Find the front of the stand, then hook the tab on the stand column through the slot on the TV.
- Push the TV stand into the stand column, then twist the stand to the right side until it snaps into place.

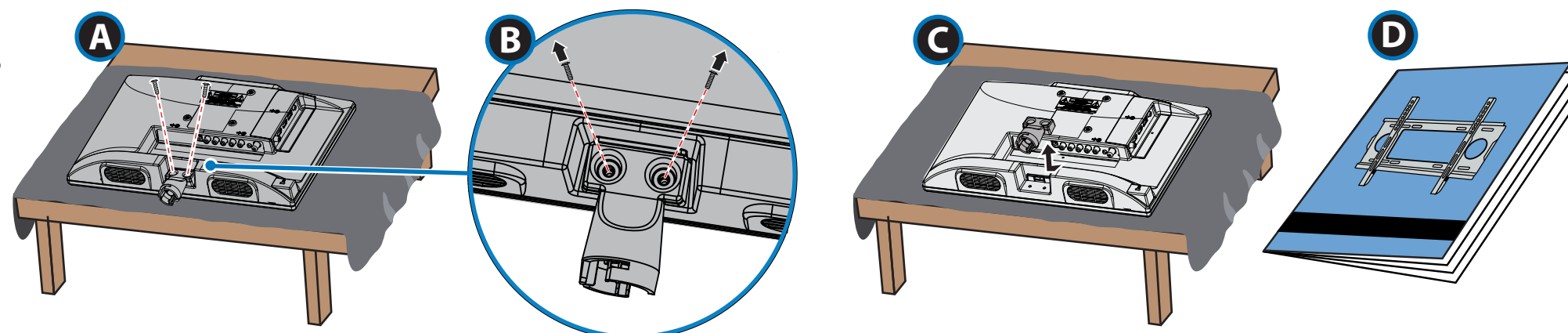


- OR -

### How do I prepare my TV for wall mounting?

(not for use with a TV stand)

- Carefully place your TV face-down on a cushioned, clean surface.
- Remove the two screws that secure the stand column to your TV.
- Remove the stand column.
- See the instructions that came with your wall mount for more information about how to correctly mount your TV.



Your TV has four VESA mounting holes on the back. If you attach a wall-mount bracket to the back of your TV, **the bracket must be securely attached, using all four holes**. If you do not use all four mounting holes, your TV may fall and cause property damage or personal injury. See the documentation that came with your wall mount for complete mounting instructions.

## STOP!

Do not plug your power adapter in until all other devices have been connected.

## Included accessories



Power adapter



Remote control and two AAA batteries

TV stand

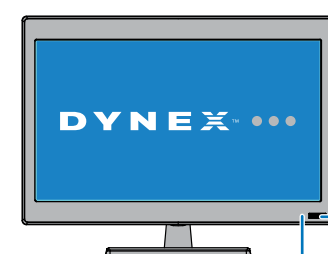
## Which cables do you have?

Your TV has several different jacks for connecting devices. For the best video quality, use the best available connection.

VIDEO QUALITY	JACK TYPE	CABLE CONNECTOR
<b>BEST</b>	HDMI video/audio	
<b>BETTER</b>	Component video and analog audio	
<b>GOOD</b>	Composite video and analog audio (AV)	
<b>GOOD</b>	Coaxial video/audio	

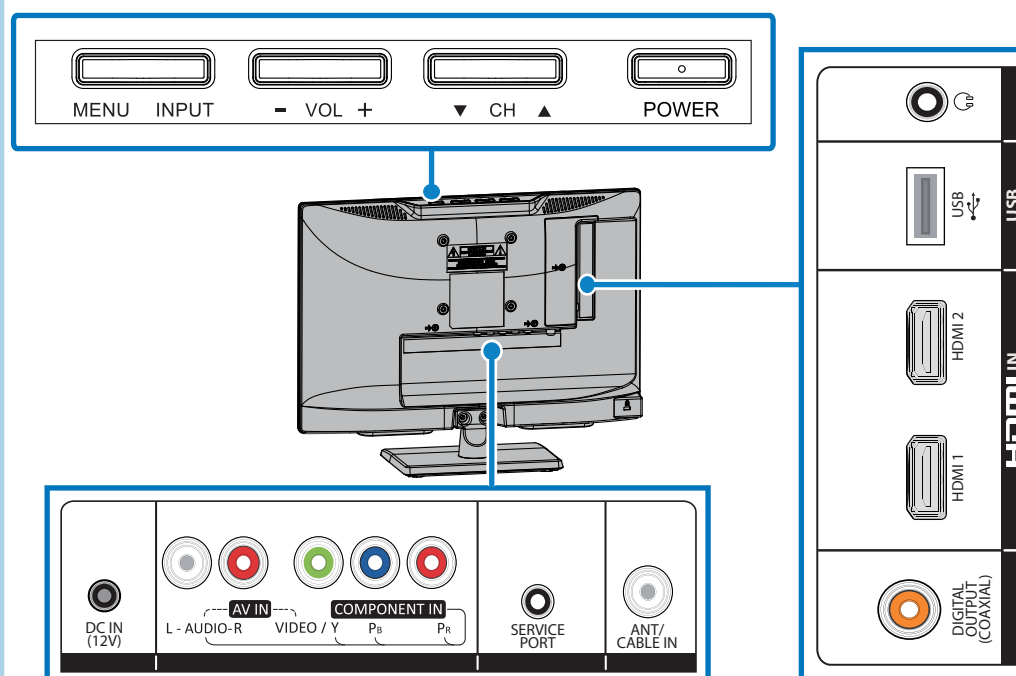
## Features

Front view



Remote control sensor  
Power indicator

Back view

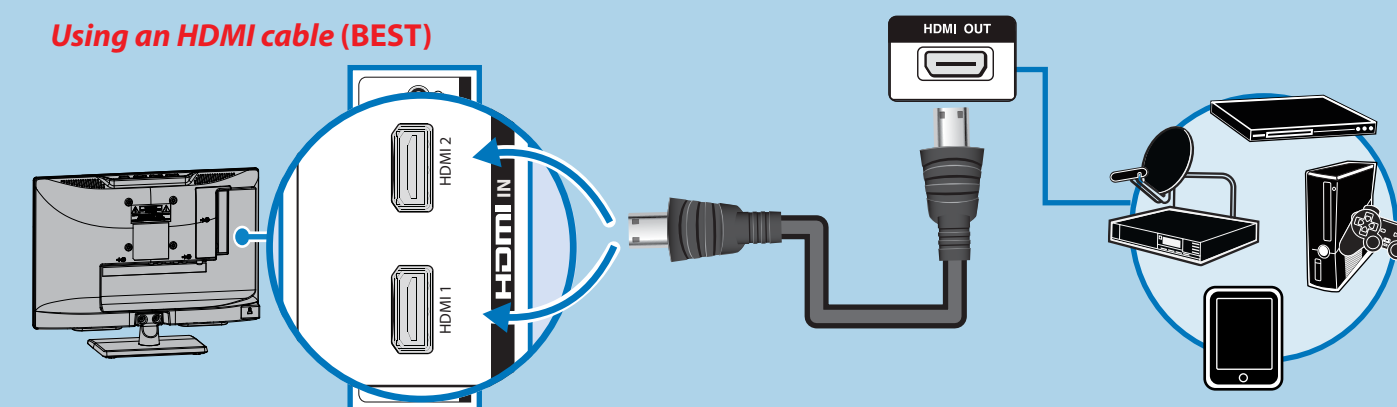


**Note:** Images do not necessarily represent the exact design of your television.

## 2 MAKING CONNECTIONS

### How do I watch TV (cable or satellite box) and/or connect a device such as a DVD or Blu-Ray Disc player, game console, or tablet?

#### Using an HDMI cable (BEST)

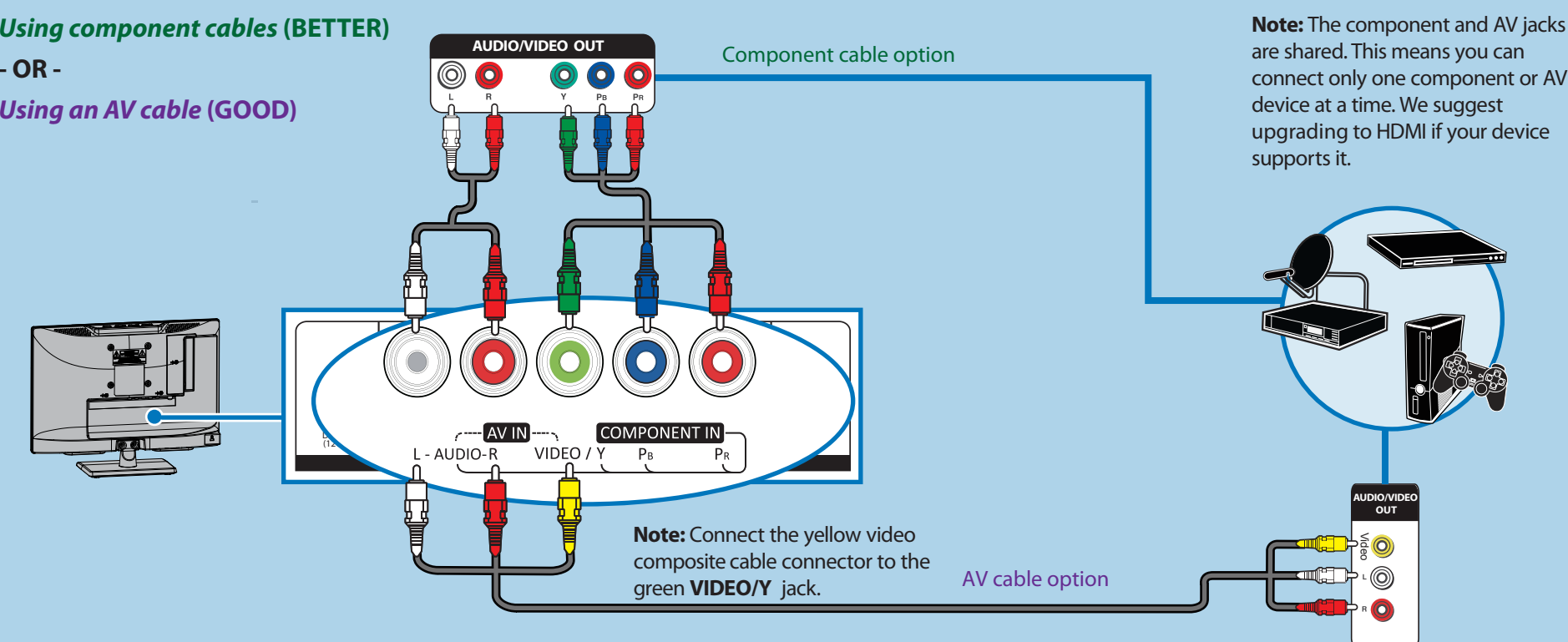


**Multi-purpose jacks:** You can plug any device that uses HDMI into either HDMI jack. However, certain devices must be plugged into the **HDMI 1** jack.

#### Using component cables (BETTER)

- OR -

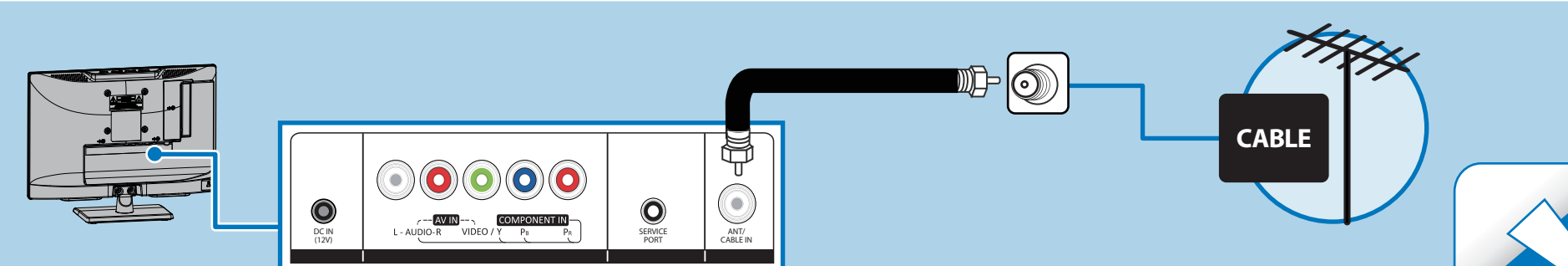
#### Using an AV cable (GOOD)



**Note:** The component and AV jacks are shared. This means you can connect only one component or AV device at a time. We suggest upgrading to HDMI if your device supports it.

**Note:** Connect the yellow video composite cable connector to the green **VIDEO/Y** jack.

### How do I connect my TV to an antenna or cable wall jack?



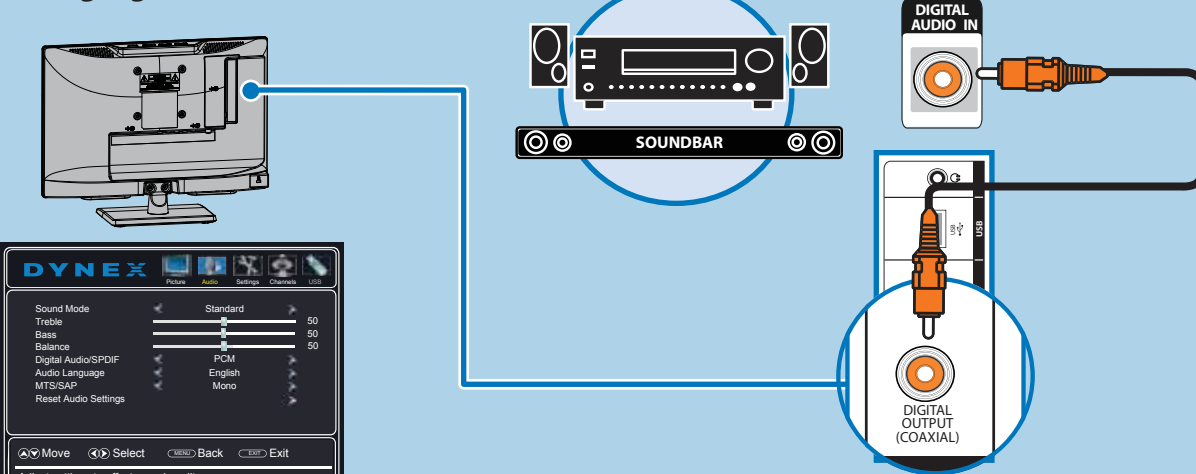
OVER



### 3 CONNECTING AUDIO DEVICES

#### How do I connect my TV to external speakers?

##### Using digital audio

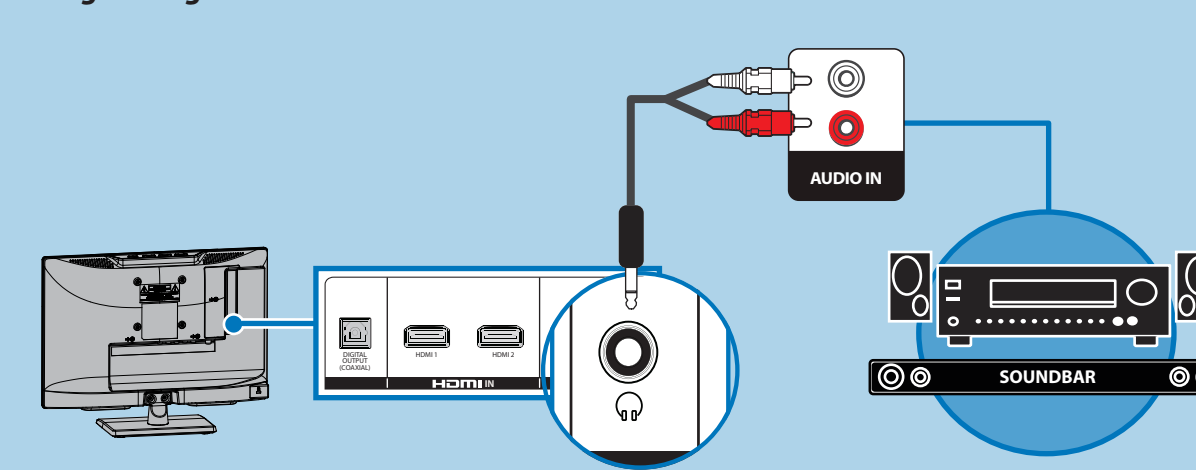


On your TV, set the **Digital Audio/SPDIF** option on the **Audio** menu to **PCM**.

**Note:** Refer to the instructions that came with your speakers for more information.

- OR -

##### Using analog audio



**Note:** Refer to the instructions that came with your speakers for more information.

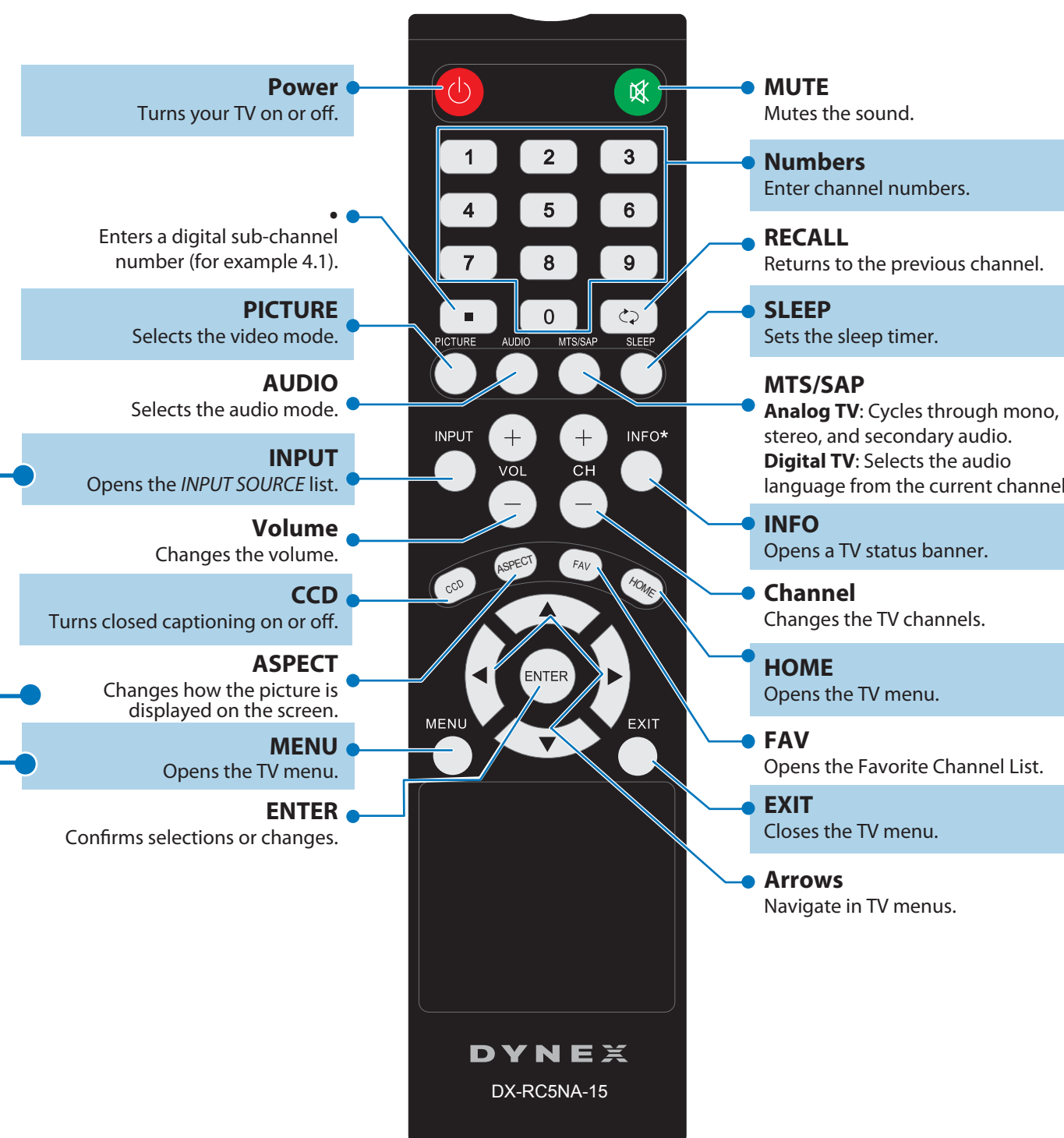
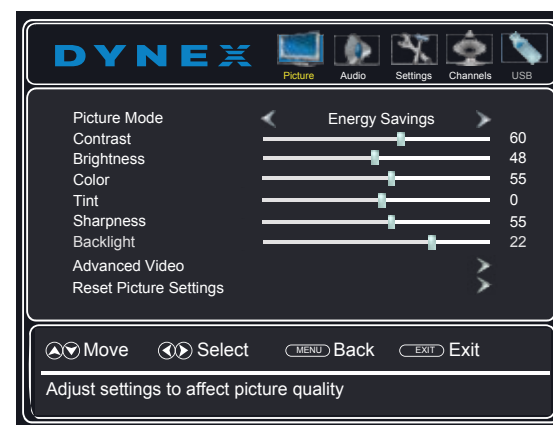
#### Using your remote control

##### INPUT SOURCE

TV  
COMP/AV  
HDMI1  
HDMI2  
USB(Photos)

##### What are my screen-size options?

- NORMAL:** You might see black bars if the original content is not widescreen (16:9).
- ZOOM:** Expands the image to fill the screen. The top and bottom of the image may be cropped.
- WIDE:** Use to watch content that was recorded in widescreen (16:9).
- CINEMA:** Stretches the image at the edges, but keeps a clear image in the center.
- AUTO:** Automatically adjusts the image based on the screen size and the TV program. Select this option if you don't know which aspect ratio to choose. **Note:** **Auto** is only available when **Auto Zoom** in the **Channels** menu is set to **On**.



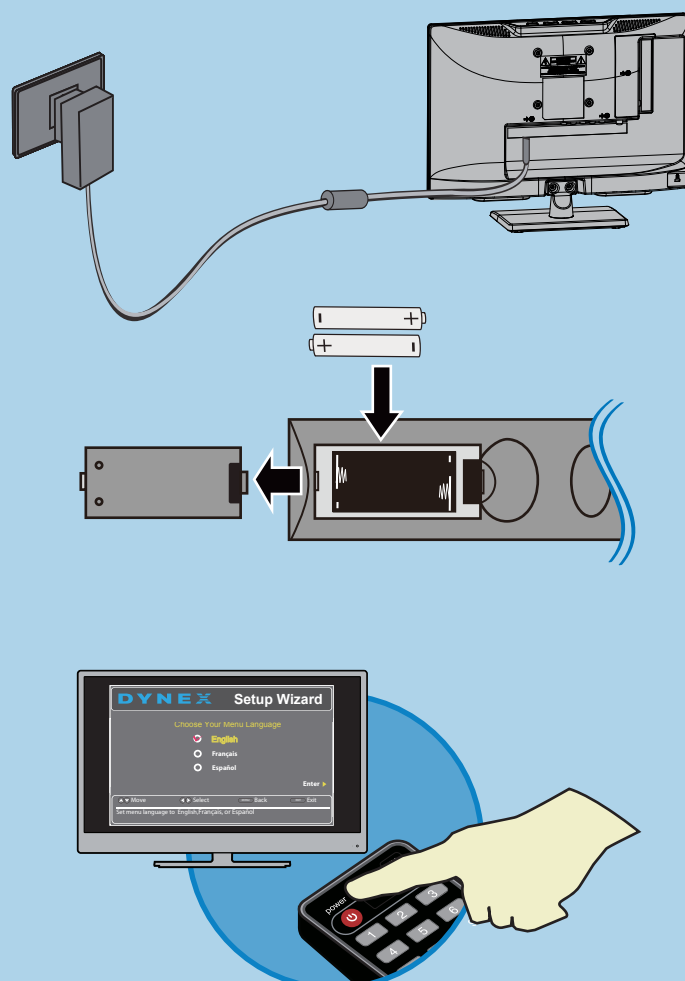
### 4 TURNING ON MY TV

#### When can I turn on my TV?

The best time to turn on your TV is after you have attached the TV stand or wall-mounted your TV and connected all devices.

##### When your television is in place:

- 1 Plug one end of the AC adapter into the power connector on the back of your TV and the other end into a power outlet.
- 2 Install the remote control batteries.
- 3 Press (power) on your remote control.
- 4 Follow the on-screen instructions.



#### I already have a universal remote control. How do I make it control this TV?

If you already have a universal remote control that you would like to program to work with your TV and don't want to use the included Dynex remote control, see the table for common codes.

UNIVERSAL REMOTE TV CODES	
CABLE BOX, SATELLITE BOX, OR OTHER SET-TOP BOX	
<b>Cablevision</b>	068, 069, 078, 096, 100, 164, 168, 229, 026
<b>Charter</b>	2002, 1204, 1423, 1517, 0171, 1963, 0463, 1463, 0842, 1326, 167, 415, 424, 450, 456, 461, 507, 523, 567, 577, 586
<b>Comcast</b>	10171, 11204, 11326, 11463, 11517, 11641, 11780, 11785, 11892, 11963, 12002
<b>Cox</b>	1326, 1463
<b>Direct TV</b>	10171, 11204, 11326, 11517, 11564, 11641, 11963, 12002
<b>Dish Network</b>	720
<b>Time Warner</b>	400, 450, 461, 456, 10463, 1463, 0463
<b>Tivo</b>	0091
<b>Verizon</b>	0198, 0490
UNIVERSAL REMOTE CONTROLS	
<b>One for All</b>	0054
<b>Philips</b>	0198, 0490
<b>RCA</b>	135
<b>Sony</b>	026, 068, 069, 078, 096, 100, 164, 168, 229,



For an up-to-date list of codes for other cable providers and universal remote brands, scan this **QR code** or visit [www.dynexproducts.com/remotecodes](http://www.dynexproducts.com/remotecodes).

DYNEX

#### One-year limited warranty

Visit [www.dynexproducts.com](http://www.dynexproducts.com) for details.

#### Need additional help?

See your online *User Guide*! This comprehensive guide includes everything from basic how-to steps to more advanced features. A copy of your *User Guide* is not provided in the box but is available online. Go to [www.dynexproducts.com](http://www.dynexproducts.com), click **Support & Service**, enter **DX-16E220NA16** in the box under **Manual, Firmware, Drivers & Product Information**, then click **Search**.

#### We're here for you

[www.dynexproducts.com](http://www.dynexproducts.com)  
For customer service, call:  
**800-305-2204**  
(U.S./Canada markets)

DYNEX is a registered trademark of BBY Solutions, Inc. Registered in some countries.  
Distributed by Best Buy Purchasing, LLC,  
7601 Penn Ave South, Richfield, MN 55423 U.S.A.

©2014 BBY Solutions, Inc.  
All Rights Reserved  
1-800-305-2204  
[www.dynexproducts.com](http://www.dynexproducts.com)  
Made in China