

# SONY

α  
ALPHA

## Imagination in Motion

# α7s III



Exmor R  
CMOS Sensor

BIONZ XR

4K  
HDR

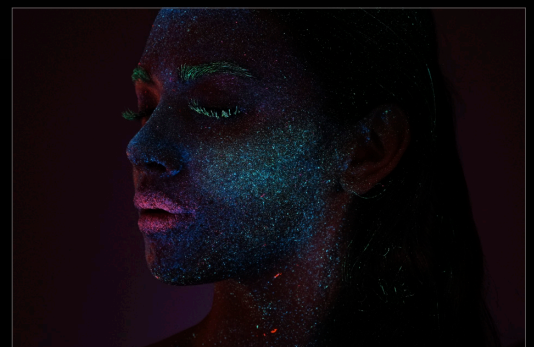
4D FOCUS

XAVC HS

CF  
express

35mm Full Frame <b>12.1</b> Mega pixels	ISO <sup>*1</sup> <b>40-409600</b>	Phase Detection <b>759</b> AF Points	Real-time Eye AF	Real-time Tracking	4K <sup>*2</sup> <b>120p/100p</b> (NTSC / PAL)	4:2:2 10 bit	MPEG-H HEVC/H.265	16bit RAW <sup>*3</sup> HDMI Output	Optical <sup>*3</sup> SteadyShot (Active Mode)	0.64 / 9.44 Type Million dots EVF	Dual Slot (CFexpress Type A SDXC UHS-II)
---	---------------------------------------	--	---------------------	-----------------------	--	-----------------	----------------------	--	--	---	--

Responding directly to the needs of today's content creators, Sony's S series is back with a refined sensor and imaging processing engine that deliver even greater sensitivity and dynamic range, plus unprecedented speed and processing power for dramatically expanded creative scope. In addition to sensitivity and speed that can only be achieved with big pixels on an advanced full-frame 12.1 megapixel<sup>\*4</sup> sensor, the α7S III offers 4K movie recording at up to 120p, with stunning 10-bit depth and 4:2:2 sampling when needed. It achieves this while maintaining the compact mobility and extraordinary focal plane phase-detection AF performance that have made Sony's E-mount α series a favorite with creative professionals. The α7S III also offers updated control capabilities and fast response that, in combination with supreme image quality, make it easier than ever to bring your imagination to life.



FE 85mm F1.4 GM (SEL85F14GM), 1/125 sec., F9, ISO 6400

### Movie Recording Highlights

- In-camera 4K at up to 120 fps with full-pixel readout and no binning
- 15+ stop dynamic range<sup>\*5</sup>
- ISO sensitivity expandable to 409600
- Rolling shutter distortion reduced by approximately 3x<sup>\*6</sup>
- 10-bit 4:2:2 video with Long GOP or All Intra compression
- 10-bit S-Log3, 16-bit RAW output via HDMI Type A
- MPEG-H HEVC/H.265 codec with superior compression efficiency

### Evolved Movie Focus, Stabilization, and Audio

- Fast Hybrid AF in all modes, including 4K 120p
- Real-time Eye AF
- Intuitive Touch Tracking control
- Active Mode optical stabilization for handheld movie shooting
- Digital Audio Interface supports 48 kHz/24 bit 4 channel recording<sup>\*7</sup>

### Stunning Stills

- ISO expandable to 409600
- Consistently accurate color with natural skin tones
- Improved Eye AF performance and animal eye tracking
- Continuous shooting at up to 10 fps
- 10-bit HEIF format delivers smooth gradations



### Other New Features

- New menu structure with touch operation
- Side-opening vari-angle monitor
- High-performance Quad-XGA viewfinder
- Dual media slots support CFexpress Type A and SD memory cards
- Effective heat dissipation allows continuous 4K 60p recording for more than an hour<sup>\*8</sup>
- Fast 5GHz/2.4GHz wireless LAN<sup>\*9</sup>

<sup>\*1</sup> Standard ISO sensitivity 80-102400. Expandable to 40-409600 for stills, and 80-409600 for movies. <sup>\*2</sup> QFHD (3840 x 2160 pixels). <sup>\*3</sup> For movies.

<sup>\*4</sup> Approximate, effective. <sup>\*5</sup> S-Log3 movies, Sony tests. <sup>\*6</sup> Compared to the α7S II. <sup>\*7</sup> 4-channel 24-bit recording requires the optional XLR-K3M Adaptor Kit.

<sup>\*8</sup> Sony internal test. XAVC S-I 10-bit 4:2:2, 25 deg C (ambient, camera when recording started), Auto Power Off Temperature: High. Actual time will depend on shooting conditions.

<sup>\*9</sup> Models sold in some countries/regions support IEEE 802.11b/g/n (2.4 GHz) only. 5GHz communication may be restricted in some countries and regions.

# α7s III



Alpha7S III



Visit the product web page for detailed information.

<https://www.sony.co.uk/electronics/interchangeable-lens-cameras/ilce-7sm3>

## Main specifications

General	Camera type	Interchangeable lens digital camera
	Lens mount	E-mount
Image sensor	Type	35mm full frame (35.6x23.8mm), Exmor R CMOS sensor
	Number of pixels (effective)	Approx. 12.1 megapixels
	Anti-Dust function	Yes (Charge protection coating on Optical Filter and ultrasonic vibration mechanism)
	Recording system (still image)	JPEG (DCF Ver. 2.0, Exif Ver. 2.32, MPF Baseline compliant), HEIF (MPEG-A MIAF compliant), RAW (Sony ARW 4.0 format compliant)
Recording system (movie)	Image quality modes	RAW (Compressed / Uncompressed), JPEG (Extra fine / Fine / Standard), HEIF (4:2:0 / 4:2:2) (Extra fine / Fine / Standard), RAW & JPEG, RAW & HEIF
	14bit RAW	Yes
	Creative Look	ST, PT, NT, VV, VV2, FL, IN, SH, BW, SE, Custom Look (1-6)
	Recording format	XAVC S, XAVC HS
Recording system (movie)	Video compression	XAVC S: MPEG-4 AVC/H.264, XAVC HS: MPEG-H HEVC/H.265
	Audio recording format	XAVC S: LPCM 2ch, LPCM 2ch (48kHz 16bit), LPCM 2ch (48kHz 24bit) <sup>1)</sup> , LPCM 4ch (48kHz 24bit) <sup>1)</sup> , MPEG-4 AAC-LC 2ch <sup>2)</sup>
	Creative Look	ST, PT, NT, VV, VV2, FL, IN, SH, BW, SE, Custom Look (1-6)
	Picture Profile	Yes (Off / PPI-PP10) Parameters: Black level, Gamma (Movie, Still, Cinel-4, ITU709, ITU709 [800%], S-Log2, S-Log3, HLG, HLG1-3), Black Gamma, Knee, Color Mode, Saturation, Color Phase, Color Depth, Detail, Copy, Reset
Movie recording system (XAVC HS 4K)	3840 x 2160 (4:2:0, 10bit) (Approx.)	NTSC mode: 120p (200Mbps), 60p (150Mbps / 75Mbps / 45Mbps), 24p (100Mbps / 50Mbps / 30Mbps), PAL mode: 100p (200Mbps), 50p (150Mbps / 75Mbps / 45Mbps)
	3840 x 2160 (4:2:2, 10bit) (Approx.)	NTSC mode: 120p (280Mbps), 60p (200Mbps / 100Mbps), 24p (100Mbps / 50Mbps), PAL mode: 100p (280Mbps), 50p (200Mbps / 100Mbps)
Movie recording system (XAVC S 4K)	3840 x 2160 (4:2:0, 8bit) (Approx.)	NTSC mode: 120p (200Mbps), 60p (150Mbps), 30p (100Mbps / 60Mbps), 24p (100Mbps / 60Mbps), PAL mode: 100p (200Mbps), 50p (150Mbps), 25p (100Mbps / 60Mbps)
	3840 x 2160 (4:2:2, 10bit) (Approx.)	NTSC mode: 120p (280Mbps), 60p (200Mbps), 30p (140Mbps), 24p (100Mbps), PAL mode: 100p (280Mbps), 50p (200Mbps), 25p (140Mbps)
Movie recording system (XAVC S HD)	1920 x 1080 (4:2:0, 8bit) (Approx.)	NTSC mode: 120p (100Mbps / 60Mbps), 60p (50Mbps / 25Mbps), 30p (50Mbps / 16Mbps), 24p (50Mbps), PAL mode: 100p (100Mbps / 60Mbps), 50p (50Mbps / 25Mbps), 25p (50Mbps / 16Mbps)
	1920 x 1080 (4:2:2, 10bit) (Approx.)	NTSC mode: 60p (50Mbps), 30p (50Mbps), 24p (50Mbps), PAL mode: 50p (50Mbps), 25p (50Mbps)
Movie recording system (XAVC S-I 4K)	3840 x 2160 (4:2:0, 10bit) (Approx.)	NTSC mode: 60p (600Mbps), 30p (300Mbps), 24p (240Mbps), PAL mode: 50p (500Mbps), 25p (250Mbps)
	3840 x 2160 (4:2:0, 10bit) (Approx.)	NTSC mode: 60p (222Mbps), 30p (111Mbps), 24p (89Mbps), PAL mode: 50p (185Mbps), 25p (93Mbps)
Slow & Quick Motion (S&Q)	Image frame rate	NTSC mode: 1fps, 2fps, 4fps, 8fps, 15fps, 30fps, 60fps, 120fps, 240fps <sup>3)</sup> PAL mode: 1fps, 2fps, 3fps, 6fps, 12fps, 25fps, 50fps, 100fps, 200fps <sup>3)</sup>
	Media	SD memory card, SDHC memory card (UHS-I/II compliant), SDXC memory card (UHS-I/II compliant), CFexpress Type A memory card
Movie function	Memory card slot	SLOT1: Multi slot for SD (UHS-I/II compliant) memory card/CFexpress Type A card, SLOT2: Multi slot for SD (UHS-I/II compliant) memory card/CFexpress Type A card
	Others	Audio Level Display, Audio Rec Level, PAL/NTSC Selector, Proxy Recording, TC/UB, Auto Slow Shutter, Gamma Disp. Assist, RAW Output
Focus system	Type	Fast Hybrid AF (phase-detection AF / contrast-detection AF)
	Focus point	35mm full frame: 759 points (phase-detection AF), APS-C mode with FF lens: 345 points (phase-detection AF), with APS-C lens: 285 points (phase-detection AF) / 425 points (contrast-detection AF)
Sensitivity range	AF mode	EV-6 to EV20 (ISO100 equivalent with F2.0 lens attached)
	AF mode	AF-A (Automatic AF), AF-S (Single-shot AF), AF-C (Continuous AF), DMF (Direct Manual Focus), Manual Focus
	Focus area	Wide / Zone / Center / Flexible Spot / Expanded Flexible Spot / Tracking
	Eye AF	[Still images] Human (Right/Left Eye Select) / Animal, [Movie] Human (Right/Left Eye Select)
Exposure control	Metering type	1200-zone evaluative metering
	ISO sensitivity (Recommended Exposure Index)	Still images: ISO 80-102400 (ISO numbers up from ISO 40 to ISO 409600 can be set as expanded ISO range.), Movies: ISO 80-102400 equivalent (ISO numbers up to ISO 409600 can be set as expanded ISO range.)
	Anti-flicker Shoot.	Yes <sup>4)</sup>
Viewfinder	Type	1.6 cm (0.64 type) electronic viewfinder (Quad-XGA OLED)
	Number of dots	9,437,184,dots

Viewfinder	Control function	Brightness, Color temperature, Magnifi.
	Field coverage	100%
	Magnification	Approx. 0.90 x (with 50mm lens at infinity, -1m <sup>-1</sup> )
	Diopter adjustment	-4.0 to +3.0m <sup>-1</sup>
LCD screen	Type	7.5cm (3.0-type) type TFT
	Touch panel	Yes
	Number of dots (total)	1,440,000 dots
	Adjustable angle	Opening Angle: Approx. 176 deg., Rotation Angle: Approx. 270 deg.
Shutter	Type	Electronically-controlled, vertical-traverse, focal-plane type
	Shutter Type	Mechanical shutter / Electronic shutter
	Shutter speed	Still images: 1/8000 to 30 sec, Bulb, Movies: 1/8000 to 1/4 (1/3 steps), up to 1/60 in AUTO mode (up to 1/30 in Auto slow shutter mode)
	Flash sync. speed <sup>5)</sup>	1/250 sec.
	Electronic Front Shutter Curtain	Yes (ON/OFF)
SteadyShot INSIDE (image stabilization)	Silent Shooting	Yes (ON/OFF)
	Type	Image Sensor-Shift mechanism with 5-axis compensation (Compensation depends on lens specifications)
	Compensation effect	5.5 stops (based on CIPA standard, Pitch/yaw shake only. With Planar T* FE 50mm F1.4 ZA lens mounted, Long exposure NR off.)
	Mode	[Still images] On / Off, [Movie] Active / Standard / Off
Drive	Drive modes	Single Shooting, Continuous shooting (Hi+/Hi/Mid/Lo selectable), Self-timer, Self-timer (Cont.), Bracket: Single, Bracket: Cont., White Balance bracket, DRO bracket
	Speed (approx., max.) <sup>6)</sup>	Continuous shooting: Hi+: 10 fps, Hi: 8 fps, Mid: 6 fps, Lo: 3 fps
	No. of frame recordable* (approx.) <sup>8)</sup>	JPEG Extra fine L: over 1000 frames, JPEG Fine L: over 1000 frames, JPEG Standard L: over 1000 frames, RAW: over 1000 frames, RAW & JPG: over 1000 frames, RAW (Uncompressed): over 1000 frames, RAW (Uncompressed) & JPG: over 1000 frames
	Interface	Multi Interface Shoe <sup>7)</sup> Yes (with Digital Audio Interface)
Audio	Mic Terminal	Yes (3.5 mm Stereo minijack)
	Headphone Terminal	Yes (3.5 mm Stereo minijack)
	Remote Control (Wireless)	Yes (IR remote control / Bluetooth remote control)
	Vertical Grip Connector	Yes
Power	Others	PC interface, Multi / Micro USB Terminal <sup>8)</sup> , USB Type-C <sup>9)</sup> Terminal, NFC, Wireless LAN(built-in), Bluetooth, HDMI Connector (Type-A)
	Microphone	Built-in, stereo
	Speaker	Built-in, monaural
	Battery	One rechargeable battery pack NP-FZ100
Weight	Still images <sup>10)</sup>	Approx. 510 shots (Viewfinder) / Approx. 600 shots (LCD monitor), (CIPA standard)
	Movies (actual recording) <sup>10)</sup>	Approx. 80 min (Viewfinder) / Approx. 95 min (LCD monitor), (CIPA standard)
	Movies (continuous recording)	Approx. 130 min (Viewfinder) / Approx. 135 min (LCD monitor), (CIPA standard)
	With battery and memory card included	Approx. 699 g
Dimensions	Dimensions (W x H x D)	Approx. 128.9mm x 96.9mm x 80.8mm, Approx. 128.9mm x 96.9mm x 69.7mm (FROM GRIP TO MONITOR)
	Operating temperature	32 - 104 °F / 0 - 40 °C

## Specifications and features are subject to change without notice.

- \*1 When using accessories that support 4ch output / 24 bits with the Multi Interface Shoe.  
\*2 Proxy movies.  
\*3 Number of effective pixels: 1420 x 804 at 240 or 200 fps. 240 or 200 fps not available when using [XAVC HS 4K], [XAVC S 4K], or [XAVC S-I 4K] file formats.  
\*4 Anti-flicker Shooting is not available when the [Shutter Type] setting is set to [Electronic Shutter].  
\*5 With compatible Sony external flash.  
\*6 Varies according to shooting conditions or memory card used.  
\*7 Sony accessories for the Accessory Shoe can be attached.  
\*8 Supports Micro USB compatible device.  
\*9 The LCD screen is turned on, shot once every 30 seconds, operate zoom alternately between W and T ends, flash strobe once every two times, turn power off and on once every ten times.  
\*10 Indication recording time, which is defined by repeating the cycle: Power on, start recording, zoom , stand-by and power off.

## Continuous recording time for movies

Auto Power OFF Temp. : Standard	
Ambient temperature : 25 °C	Ambient temperature : 40 °C
Continuous recording time for movies (HD) : approx. 30 min	Continuous recording time for movies (HD) : approx. 30 min
Continuous recording time for movies (4K) : approx. 30 min	Continuous recording time for movies (4K) : approx. 30 min

Auto Power OFF Temp. : High	
Ambient temperature : 25 °C	Ambient temperature : 40 °C
Continuous recording time for movies (HD) : approx. 120 min	Continuous recording time for movies (HD) : approx. 90 min
Continuous recording time for movies (4K) : approx. 90 min	Continuous recording time for movies (4K) : approx. 60 min

HD: XAVC S HD (60p 50M 4:2:0 8bit, WiFi not connected, CFexpress Type A memory card, monitor in use)  
4K: XAVC S 4K (60p 150M 4:2:0 8bit, WiFi not connected, CFexpress Type A memory card, monitor in use)



Shotgun Microphone

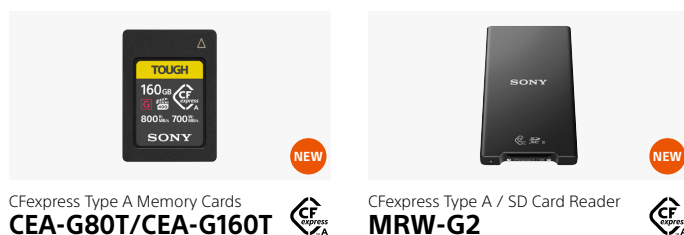
ECM-B1M

Multi Interface Shoe

XLR Adaptor Kit

XLR-K3M

Multi Interface Shoe



CFexpress Type A Memory Cards

CEA-G80T/CEA-G160T

CFexpress Type A

CFexpress Type A / SD Card Reader

MRW-G2

CFexpress Type A

## Trademarks & Remarks

- **"SONY", "α", "α", "Exmor R", "BIONZ X", "BIONZ XR", "InfoLithium", "Imaging Edge", "TRILUMINOS", "TRILUMINOS Color", "TRILUMINOS Display", "XAVC S", "XAVC S-I" and "XAVC S HS"** are trademarks or registered trademarks of Sony Corporation.  
• **"Xperia"** is a trademark or registered trademark of Sony Mobile Communications AB. • The SD Logo, SDHC Logo and SDXC Logo are trademarks of SD-3C, LLC. • CFexpress is a trademark of the Association CompactFlash. • The terms HDMI and HDMI High-Definition Multimedia Interface, and the HDMI Logo are trademarks or registered trademarks of HDMI Licensing Administrator, Inc. in the United States and other countries. • The Wi-Fi Protected Setup Identifier Mark is a mark of the Wi-Fi Alliance. • The Bluetooth word mark and logos are registered trademarks owned by Bluetooth SIG, INC. • N-Mark is a registered trademark of the NFC Forum. • Dolby is a trademark of Dolby Laboratories. • USB Type-C is a trademark of USB Implementers Forum. • App Store is a service mark of Apple Inc. • Android, Google Play and Google Play logo are trademarks or registered trademarks of Google Inc. • iPhone and iPad are trademarks of Apple Inc., registered in the U.S. and other countries. • All other company and product names mentioned herein are used for identification purposes only and may be the trademarks or registered trademarks of their respective owners. • "InfoLithium" is a lithium battery pack which can exchange data with compatible electronic equipment about its energy consumption. • Sony recommends that you use the battery pack with electronic equipment bearing the "InfoLithium" mark. • Screen displays and effects used to illustrate some functions are simulated. • For use of other companies' services and software, 1) other conditions for use may be applied. 2) updating of services and software may be stopped/terminated without prior notice. 3) the contents of services and software may be changed without prior notice. 4) other registrations or payments of other fees may be required.