

# Tonal Fits说明书

## 尺寸：74.8\*74.8mm



Scan the QR code to get the manual in other languages

Thank you for purchasing the TOZO authentic product.  
For more latest products, parts and accessories,  
please visit: [www.tozostore.com](http://www.tozostore.com)  
For any assistance please contact Email: [info@tozostore.com](mailto:info@tozostore.com)

FC RoHS CE

TOZO

EN

### 19.0 Box Wireless Charging

Designed for modern life, you can use either charging cables or wireless charging pad for charging, enjoy the convenience of unplugged charging and instant charging.

### 20.0 Display of Charging Box Power

When close the charging case, earbuds will power off automatically and the digital display screen will turn on 5 second, then turn off.

### 21.0 Earbuds Charging

Put earbuds into the charging box to charge automatically.

### 22.0 Indicator Status

Earbuds mode	Indicator status
Power on	White light on 1 second
Power off	White light quick flashes 3 times, then light off
Bluetooth pairing (Mobile phone/Other device)	Pairing status: white light flashes quickly (flashing once in 0.5 seconds) Connection successfully: white light on 2 seconds
Incoming call	The indicator light flashes every 2 seconds
Earbuds charging	White light on all the way until charging fully
Battery low	White light flashes one time every 3 second

TOZO

EN

### 23.0 TOZO App

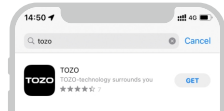
Download the TOZO App for UI customization, EQ settings and more.

- UI customization: Most of the controls can be customized in the App.
- EQ settings: There're lots of EQ settings you can choose in the App to optimize your experience while enjoying different music genres.
- Earbuds firmware update: The earbuds firmware can be updated in the App. You will be informed once the new version of firmware is detected when you connect the earbuds with the App.



### 24.0 TOZO App Pairing

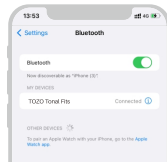
Step 1:  
Download the TOZO App on your phone.



TOZO

EN

Step 2:  
Bluetooth pairing with your earbuds.



Step 3:  
TOZO App pairing with your earbuds.



TOZO

EN

### FCC ID: 2ASWH-1A

Note:

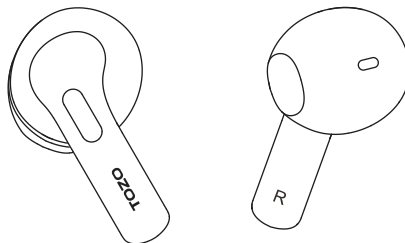
This equipment has been tested and found to comply with the pursuant to part 15 of the FCC rules. These limits are designed to provide reasonable protection against harmful interference in a residential installation. This equipment generates uses and can radiate radio frequency energy, if not installed and used in accordance with the instructions, may cause harmful interference to radio communications. However, there is no guarantee that interference will not occur in a particular installation. If this equipment does cause harmful interference to radio or television reception, which can be determined by turning the equipment off and on, the user is encouraged to try to correct the interference by one or more of the following measure:

- Reorient or relocate the receiving antenna.
  - Increase the separation between the equipment and receiver
  - Connect the equipment into an outer on a circuit different from that to which the receiver is connected
  - Consult the dealer or an experienced radio/TV technician for help.
- This device complies with part 15 of the FCC rules.Operation is subject to the following two conditions:  
(1) This device may not cause harmful interference.  
(2) This device must accept any interference received, including interference that may cause undesired operation.

Changes or modification not expressly approved by the party responsible for compliance could void the user's authority to operate the equipment.

Disposal of a battery into fire or a hot oven, or mechanically crushing or cutting of a battery, that can result in an explosion; Leaving a battery in an extremely high temperature surrounding environment that can result in an explosion or the leakage of flammable liquid or gas. A battery subjected to extremely low air pressure that may result in an explosion or the leakage of flammable liquid or gas.

TOZO®  
[www.tozostore.com](http://www.tozostore.com)



Tonal Fits

User Manual

TOZO

EN

### 1.0 Thanks for Choosing Our Products

ENC earbuds provide you with the extraordinary experience of stable voice call with fashionable appearance and multiple functions, making them a great choice for you while working, going out and driving.

### 2.0 Truly Wireless Environmental Noise Cancellation Technology

With the technology of earbuds, you can select compatible communication devices without using cables. Earbuds don't require keeping the phone facing earphones directly, but the maximum distance between them should not exceed 12 meters (about 39 steps).

Environmental Noise Cancellation, which can effectively inhibit 90% of the reverse environmental noise, thus reducing the environmental noise, up to 35dB, so that the game players can more freely voice communication. Through the double microphone array, the speaker's speaking position can be accurately calculated, which can not only protect the target voice in the main direction, but also remove various interference noises in the environment, so as to benefit the other party during the conversation.

### 3.0 Specifications

Model No.: T11054  
Impedance: 32Ω  
Frequency Range: 20Hz~20,000Hz  
Charging Port: Type-C/Wireless Charging

Earphone Battery Capacity: 48mAh\*2  
Charging Box Battery Capacity: 500mAh  
Charging Time of earphone: 1.5H  
Charging Time of charging box: 2H

### 4.0 Overview and Packing List

The package contains TOZO Tonal Fits earbuds, a charging box, Type-C charging cable and instructions.

TOZO

EN



TOZO

TOZO

TOZO

TOZO

TOZO

TOZO

TOZO

TOZO

TOZO

TOZO

TOZO

TOZO

TOZO

TOZO

TOZO

TOZO

TOZO

TOZO

TOZO

TOZO

TOZO

TOZO

TOZO

TOZO

TOZO

TOZO

TOZO

TOZO

TOZO

TOZO

TOZO

TOZO

TOZO

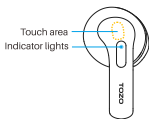
### 5.0 Earbuds Function Diagram



① Earbuds battery level  
② Charging case battery level



USB-C



TOZO

EN

### 6.0 Touch Control Prompt

Please use the touching panel to control the earbuds.  
The sensing area is located in the earphone handle's upper part.

### 7.0 Wearing Earbuds

In order to obtain a better wearing effect, the wearing angle can be adjusted appropriately after wearing, so that the earbuds slightly pushed into the ear canal.

### 8.0 Power ON/OFF

**Auto power on**  
Open the cover of the charging box, the earbuds will power on automatically.

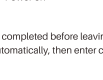
**Auto power off**  
Close the cover of the charging box, the earbuds will shut down automatically.

### Another method of power on/off

Hold L or R for 3 seconds will turn on when earbuds power off.  
Hold L or R for 8 seconds will turn off when not playing media.

### 9.0 Earbuds Pairing

In order for convenient use, the pairing between left and right earbuds have been completed before leaving form factory. When opening the cover, earbuds will turn on and pair with each other automatically, then enter connection or pairing status.



TOZO

EN

### 10.0 Bluetooth Pairing

1. Open the charging box, keep the earbuds in the charging box, earbuds will enter pairing status automatically.
2. After pairing the left and right earbuds, open the Bluetooth search in mobile phone and connect the device. Then the mobile phone displays the pairing name as [TOZO Tonal Fits].
3. When using again, double earbuds will pair with each other and return to the last pairing device automatically.
4. For single earbud use, pick up one side and keep the other side closed in the charging box. When the earbud failed to reconnect to TWS, it will enter the reconnecting mode after 2 seconds, then pair coexistence with other device. After connecting the phone, take out another earbud and enter binaural mode automatically.
5. If stay in the pairing or reconnecting status for 5 minutes in normal mode, earbuds turn off automatically.

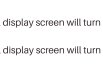
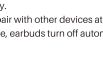
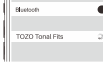
**Note:** While the left and right earbud are disconnected, put the earbuds in the charging box then left and right earbud will be paired automatically.

### 11.0 Bluetooth Lost

1. Turn off mobile phone's Bluetooth earbuds will enter the pairing mode and don't connect back. If stay in the pairing or reconnecting status for 5 minutes in normal mode, earbuds turn off automatically.
2. If the connection range is exceeded, it will enter the back-connection mode, then pair with other devices at the same time. If stay in the pairing or reconnecting status for 5 minutes in normal mode, earbuds turn off automatically.

### 12.0 Hall Sensor Function

1. When open the charging case, earbuds will power on automatically and the digital display screen will turn on 5 seconds, then turn off.
2. When close the charging case, earbuds will power off automatically and the digital display screen will turn on 5 seconds, then turn off.



TOZO

EN

### 13.0 Touch Operation (Operation in wearing two earbuds)

- Double tap the "L" sensing area ("L sensing area" abbreviated as "L"), then skip to the previous song.
- Double tap the "R" sensing area ("R sensing area" abbreviated as "R"), then skip to the next song.
- Tap the "L" or "R" sensing area ("L or R sensing area" abbreviated as "L" or "R") to play or pause music.
- Long press the "L" to decrease the volume when music playing.
- Long press the "R" to increase the volume when music playing.

### 14.0 Touch Operation (Operation in wearing one earbud)

- Double tap the "L" sensing area ("L sensing area" abbreviated as "L"), then skip to the previous song.
- Tap the "L" or "R" sensing area ("L or R sensing area" abbreviated as "L" or "R") to play or pause music.
- Double tap the "R" sensing area ("R sensing area" abbreviated as "R"), then skip to the next song.

TOZO

EN

### 15.0 Calling Control

- Tap the "L" or "R" sensing area to answer the call. Long press "L" or "R" sensing area for 2 seconds to hang up the call while calling.
- Hold the "L" or "R" sensing area for 3 seconds to reject the call while call coming.
- Hold the "L" or "R" sensing area for 3 seconds to cancel the call while you dial out.

### 16.0 Voice Assistance

- when using single or double earbuds, triple tap "L" or "R" to wake up voice assistant.

### 17.0 Reset

1. Turn off the bluetooth of the device. Put both of the earbuds into the charging case and close the lid for a few seconds.
2. Take them out of the charging case, and the white indicator light of the earbuds will blink slowly. Then double click the touch panel on both sides at the same time, and the indicator light will blink swiftly for about 3 seconds and then turn to slow blink which shows the resetting complete. Then turn on the bluetooth of the device and connect earbuds again.
3. If the fault persists, please perform the preceding steps again.

### 18.0 Low Battery Alarm

When the battery power is low, it will be reminded once every 3 minutes and white light flashes one time every 3 seconds until the battery power run out and earbuds turn off.