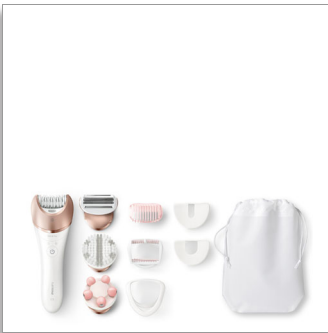




**Philips Satinelle Prestige
Cordless Wet & Dry
epilator**

For legs, body and face

4 in 1 Epilator + Shaver with Body
Care
Extra wide epilator head
Rechargeable + 40 min of use



BRE648/00

More hair removal power + tweezing actions in a Philips epilator

with an award winning design and Body Care routines

Satinelle Prestige 4 in 1 Epilator & Shaver with Body Care is a complete hair removal kit designed to effectively remove hair on the whole body - even sensitive areas - for weeks of satin smooth skin. Special ceramic tweezing disks rotate quickly and capture more thick and thin hairs.

Exceptional results

- Special ceramic tweezing discs grip more hairs
- Extra wide epilator head

Easy and effortless usage

- Award-winning design*
- Cordless wet and dry for use in bath or shower
- Opti-light helps you target and remove even trickiest hairs
- First epilator with S-shaped handle

Personalized body and face care routines

- Body exfoliation brush removes dead skin cells
- Body massager to relax and for a radiant looking skin
- Shaving head and trimming comb for a close shave
- Facial area and delicate area cap to remove unwanted hairs
- Includes massage cap
- Includes skin stretcher

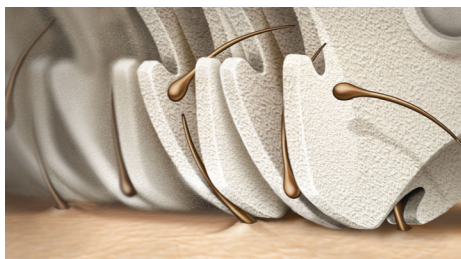
PHILIPS

Cordless Wet & Dry epilator

For legs, body and face 4 in 1 Epilator + Shaver with Body Care, Extra wide epilation head, Rechargeable + 40 min of use

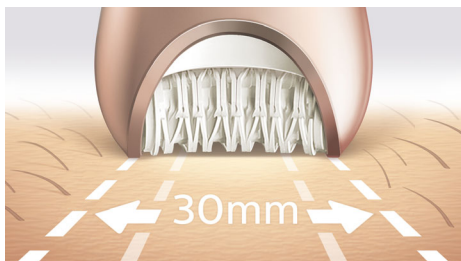
Highlights

Our fastest epilation ever



Our epilator head is unique in being made from a textured ceramic surface that gently extract even the finest hairs and those shorter than wax. Now with faster disc rotation than ever before (2200RPM) for our fastest hair removal.

Extra wide epilator head



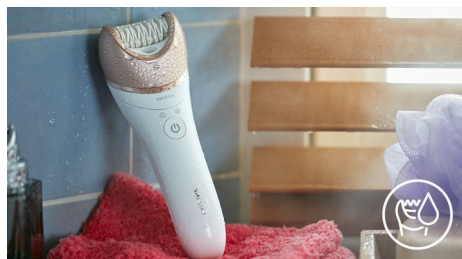
Extra wide epilation head grabs more hairs on the first pass for faster hair removal without pulling sensitive skin.

Award-winning design*



Award-winning design* for effortless hair removal

Cordless wet and dry usage



Designed with an anti-slip grip, ideal for use with water. Enables a more comfortable, gentle experience in your shower or bath. You can use it cordless for best convenience.

Opti-Light



Opti-light helps you target and remove even trickiest hairs

Body exfoliation brush



Our body exfoliation brush removes dead skin cells and helps to prevent ingrown hairs. The hypo-allergenic 48.200 fine bristles gently yet effectively sweep away dead skin cells & stimulate the regeneration of the skin surface.

BRE648/00

This device will exfoliate your skin more effectively than manual treatment alone.

Body massager



Our body massager gives you a relaxing treatment so you can enjoy radiant-looking skin.

Shaving head and trimming comb



The shaving head provides a close shave and more gentleness in different body areas. It comes with a trimming comb to style your bikini area.

Facial and delicate area cap



For more gentleness in all different body areas it includes a facial area cap to easily remove unwanted facial hairs and a delicate area cap for hair from underarm and bikini

Cordless Wet & Dry epilator

For legs, body and face 4 in 1 Epilator + Shaver with Body Care, Extra wide epilation head, Rechargeable + 40 min of use

BRE648/00

Specifications

Accessories

- Shaving head
- Trimming comb
- Body Exfoliation Brush
- Body Massager
- Delicate area cap
- Skin stretcher cap
- Facial area cap
- Massage cap
- Pouch: Basic pouch
- Cleaning brush

Ease of use

- Wet and dry use
- Opti-light
- Cordless
- Handle: S-shape handle

Performance

- Epilation system: Patented epilation system
- Epilation discs: Ceramic discs

Features

- Speed settings: 2 settings

Technical specifications

- Number of catching points: 32
- Number of discs: 17
- Voltage: 15V / 5.4W
- Tweezing action speed 1: 64000 per minute
- Tweezing action speed 2: 70400 per minute

Power

- Quick charge
- Battery Type: Lithium-ion
- Charging: Rechargeable, 1.5 hour charging time
- Usage time: up to 40 minutes



Issue date 2018-06-15

Version: 2.0.1

© 2018 Koninklijke Philips N.V.
All Rights reserved.

Specifications are subject to change without notice.
Trademarks are the property of Koninklijke Philips N.V.
or their respective owners.

www.philips.com

* IF Design Award 2016

** Compared to testers own appliance. CLT test Germany N91