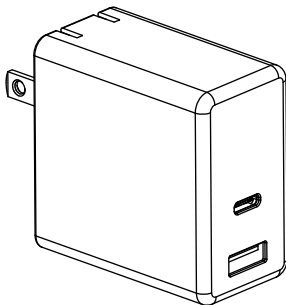


Dual Port Wall Charger

Quick Setup Guide

BE-PW65ACB25 / BE-PW100ACB25

BEST BUY
essentials™



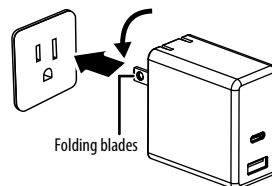
Package contents

- Dual port wall charger
- *Quick Setup Guide*

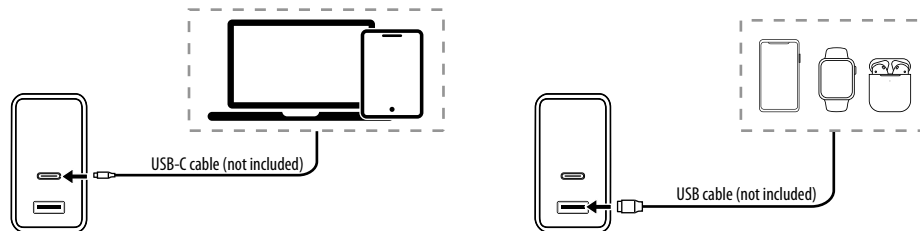
Features

- Works with smartphones, laptops, tablets and more
- Charges USB-C devices quickly and efficiently using up to 65W (BE-PW65ACB25) or 100W (BE-PW100ACB25)
- Supports charging an additional USB device
- Stores in a pocket or purse with folding blades
- Backed by Best Buy

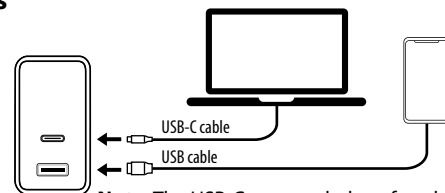
Using your wall charger



Using one port



Using multiple ports



Note: The USB-C port works best for a laptop when multiple ports are charging simultaneously.

Troubleshooting

My device isn't charging.

- Make sure that the charging cable is connected securely to the wall charger.
- Make sure that your device is securely connected to the charging cable.

My device is charging slowly.

- Make sure that the power requirements of your device match the power delivery of the charger.
- Stop using your device while it is charging.
- Close apps that run in the background on your device.
- Devices may start charging slower as they get older. This is normal.
- Charging will be slower if you are charging multiple devices at the same time.

Safety information/caution

READ ALL INSTRUCTIONS BEFORE USING.

- THIS PRODUCT IS NOT A VOLTAGE CONVERTER. Use this charger only if the power outlet voltage is within the range of your device's voltage. Using this charger with an incompatible device and power outlet may result in a risk of fire, electric shock, injury to persons, or damage to the device.
- Always disconnect the charger and the device from the power outlet when not in use.
- Do not expose the charger to high temperatures or humid environments.
- Do not place the product into a fire or submerge it in liquid.
- Do not disassemble the product.
- Avoid external shocks.
- The product will heat slightly when charging and discharging. This is normal.
- Do not operate the charger with wet hands.
- Keep out of reach of children.
- Indoor use only.
- Protection class II appliance.

Legal notices

1. FCC Caution:

Changes or modifications not expressly approved by the party responsible for compliance could void the user's authority to operate the equipment.

FCC Statement: This equipment has been tested and found to comply with the limits for a class B digital device, pursuant to part 15 of the FCC Rules.

These limits are designed to provide reasonable protection against harmful interference in a residential installation. This equipment generates, uses, and can radiate radio frequency energy and, if not installed and used in accordance with the instructions, may cause harmful interference to radio communications. However, there is no guarantee that interference will not occur in a particular installation. If this equipment does cause harmful interference to radio or television reception, which can be determined by turning the equipment off and on, the user is encouraged to try to correct the interference by one or more of the following measures:

- Reorient or relocate the receiving antenna.
- Increase the separation between the equipment and receiver.
- Connect the equipment into an outlet on a circuit different from that to which the receiver is connected.
- Consult the dealer or an experienced radio/TV technician for help.

This device complies with part 15 of the FCC Rules.

Operation is subject to the following two conditions: (1) This device may not cause harmful interference, and (2) this device must accept any interference received, including interference that may cause undesired operation.

2. CAN ICES-003 B/NMB-003 B

One-year limited warranty

Visit www.bestbuy.com/bestbuyessentials for details.

Contact Best Buy essentials

For customer service, call
1-877-467-4289 (U.S. and Canada)
www.bestbuy.com/bestbuyessentials

Best Buy essentials is a trademark of Best Buy and its affiliated companies.
Distributed by Best Buy Purchasing, LLC
7601 Penn Ave South, Richfield, MN 55423 U.S.A.
©2024 Best Buy. All rights reserved.