



## PicStick

Wireless HDTV Photo / Video Viewer  
with Remote Control

Copyright © 2024 Aluratek, Inc. All Rights Reserved.

**QSG**  
APWHS01F

qsg Q10655



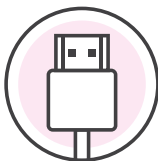
## Package Contents

Your order has been carefully packaged and inspected.

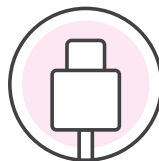
The following accessories should be included in your package. Please inspect the contents of the package to ensure that you have received all items and that nothing has been damaged. If you discover a problem, please contact us immediately for assistance.



Power Adapter



HDMI Extender



USB Power Cable

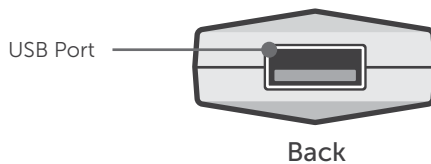
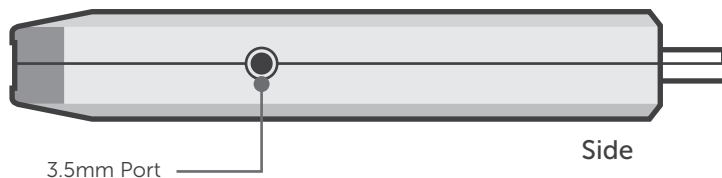
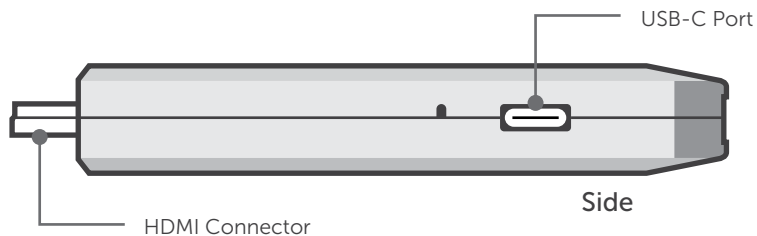


Infrared Cable

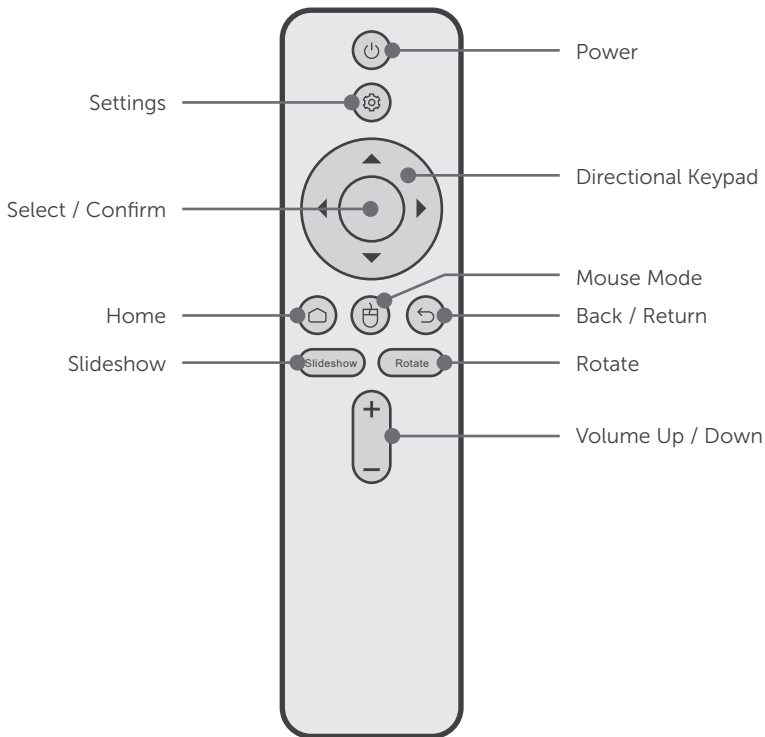


Remote Control

## Product Highlights

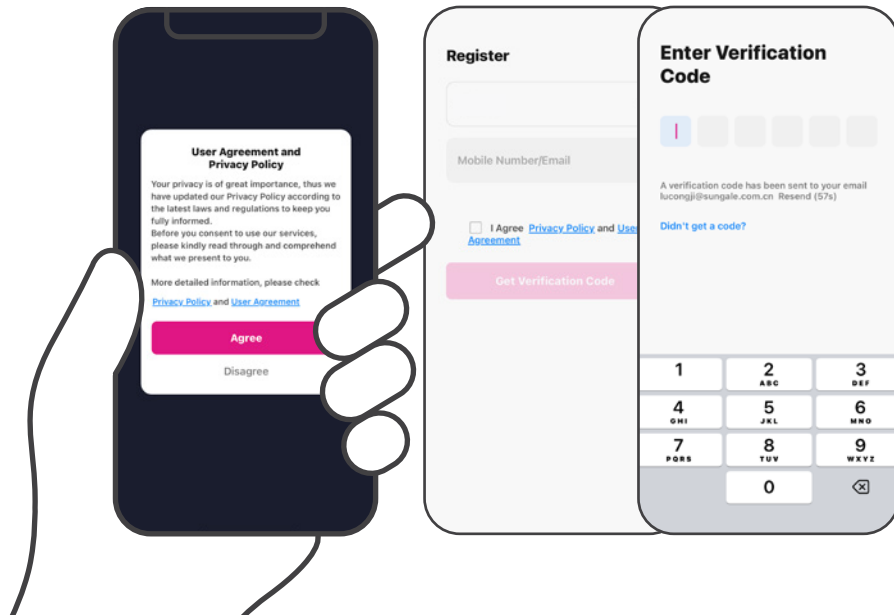


## Remote Highlights



### Step 1. Install App

Download the Frametime App on your smartphone from the **Apple App Store** or the **Google Play Store**. Once the Frametime app is installed, please follow the on-screen instruction to register an account.



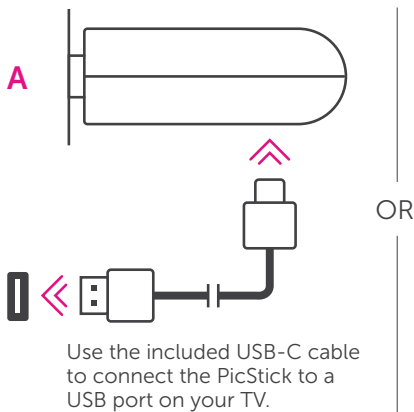
### Step 2. Connect to HDMI/Power

Insert the PicStick into an available HDMI port\* on your TV or monitor.

\*If necessary, use the HDMI extender cable.

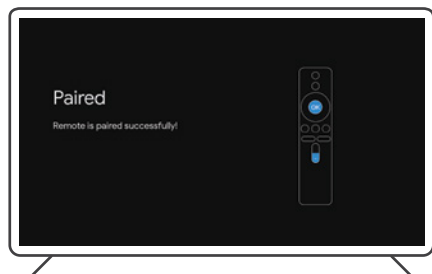
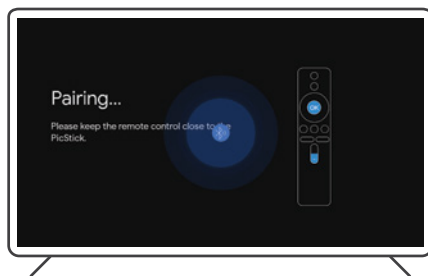
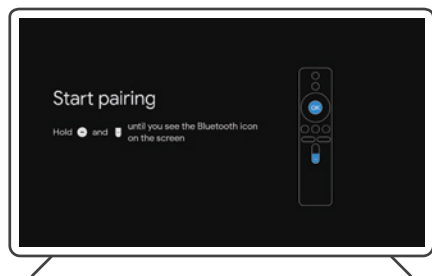


Next, connect the PicStick to power. Choose one of the following options:



### Step 3. Pair Remote

Follow the instructions on your screen to pair the remote control.





### Step 4. Connect to WiFi

Follow the instructions on your screen to connect to a WiFi network.\*

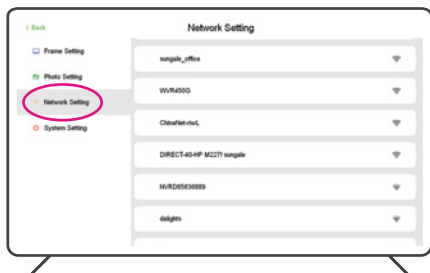
\*If necessary, connect the infrared cable to the PicStick's 3.5mm port for better remote function.



1. Select the **Next** button



2. Select **Connect Wi-Fi**



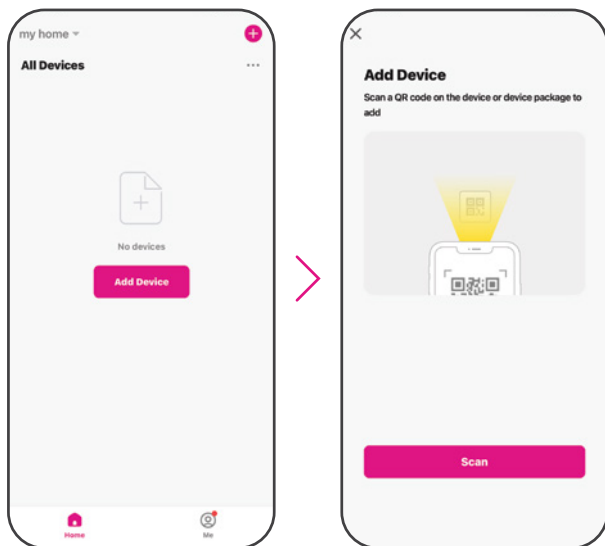
3. Select your network name



4. Enter your password and select **Connect**

### Step 5. Frametime App Set-up

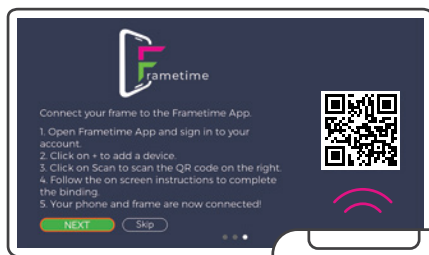
Open the Frametime app if not already open, and follow the instructions below to pair your mobile device to a screen.



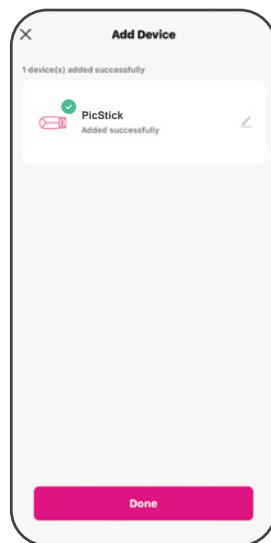
1. Select **Add Device**

2. Select **Scan**

### Step 5. Frametime App Set-up cont.



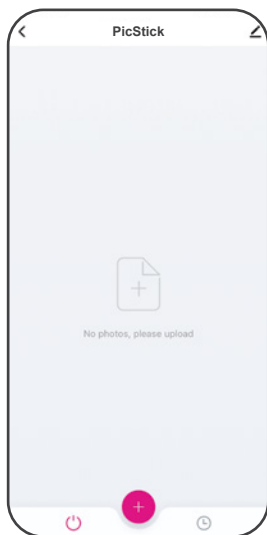
**3. Scan the QR code**  
on the screen with  
your mobile device.



**4. Name your PicStick and  
select Done.**  
**You are now connected!**

### Send Photos and Videos to the PicStick

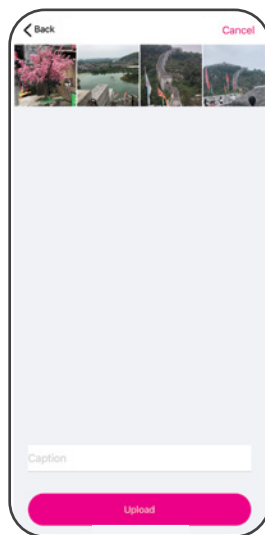
Follow the instructions below to start sending your media files from the app on your mobile device to the paired screen within your household.



1. Select +



2. Select the files you wish to send from your device's photo library and press **Done**



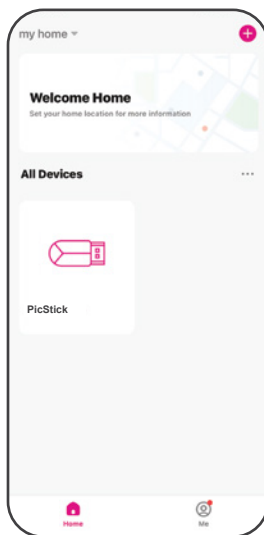
3. Once the files are selected, press **Upload**

### Share the PicStick

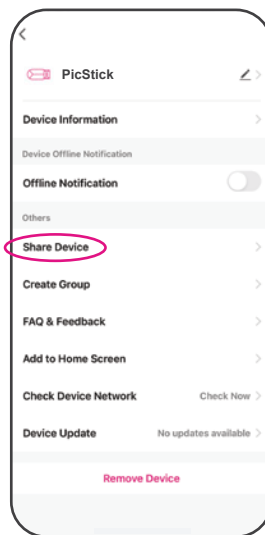
Follow the instructions below to allow others to send media files from the app on their mobile device to the paired screen.


**Note:** Make sure the person you are sharing the PicStick with has already **downloaded the Frametime app** on their mobile device and **created an account**.

You will need to have the **email address** the person you are sharing the PicStick with has used for their account creation.



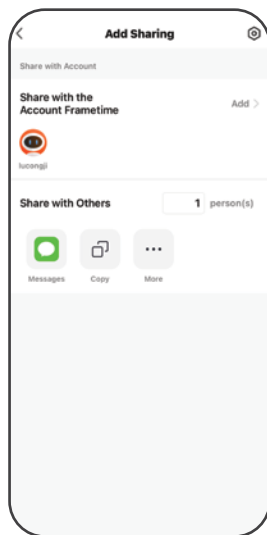
1. Open the Frametime app and choose **PicStick**



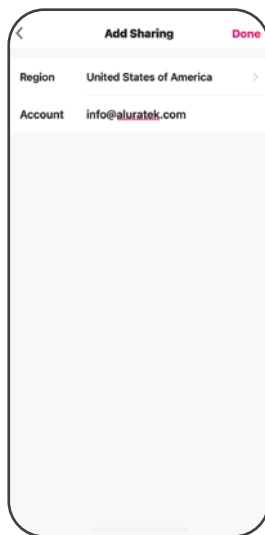
2. Select the “

PicStick Wireless HDTV Photo / Video Viewer with Remote Control

### Share the PicStick cont.



1. Select **Add Sharing** and then **Add** to input the email address



2. Select **Done** in the upper right corner

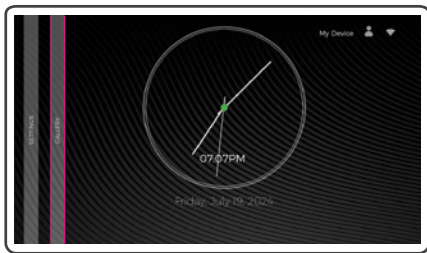
For the person that you just shared the PicStick with, they will get a **notification on their mobile device**.

The PicStick name will show up as a **shared device** on the main screen.

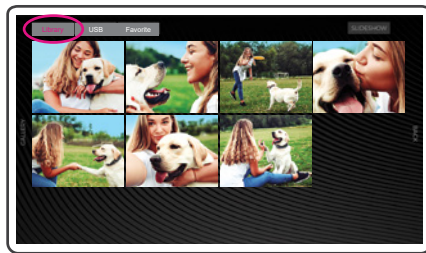
They can start sending pictures to the PicStick by following the instructions on **page 12, Send Photo and Videos to the PicStick**.

### Add Media to Favorites

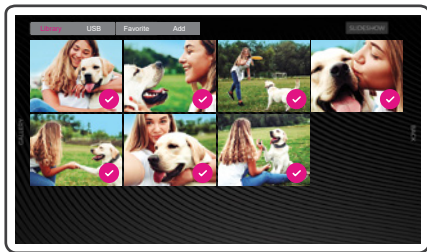
Follow the steps below to add photos and videos to the favorites folder.



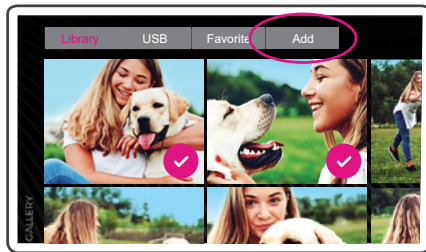
1. From the home screen interface, select **Gallery**



2. Select **Library** or the **USB** tab



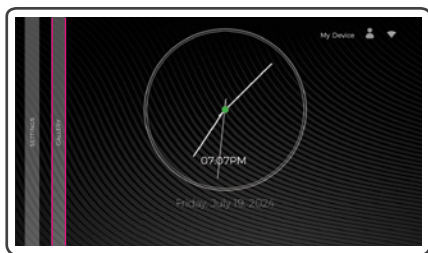
3. Scroll to the desired picture(s). Press and hold the **OK** button on the remote until you see the selected check mark



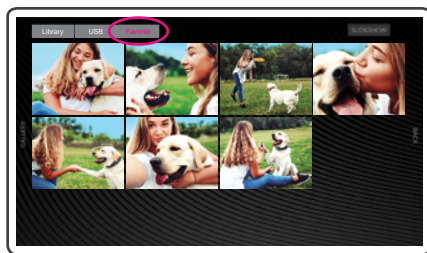
4. Once you have selected all the pictures, select **Add** on the top of the screen to add the pictures to the Favorites folder

### Delete Media from Favorites

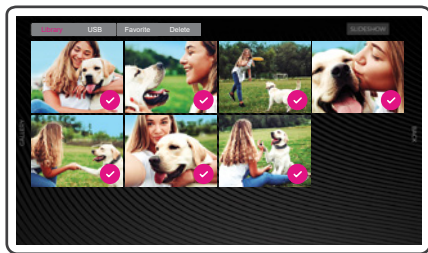
Follow the steps below to delete photos and videos from the favorites folder.



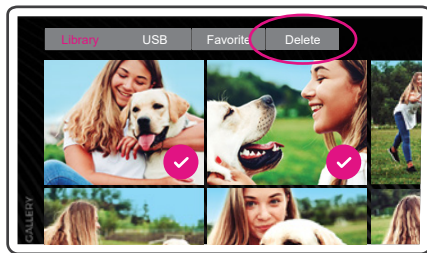
1. From the home screen interface, select **Gallery**



2. Select the **Favorites** tab



3. Scroll to the desired picture(s). Press and hold the **OK** button on the remote until you see the selected check mark



4. Once you have selected all the pictures, select **Delete** on the top of the screen to delete the pictures from the Favorites folder



## Technical Support

If you need further assistance, please contact the **Aluratek Customer Care** department for troubleshooting prior to returning this device.

**E-mail:** [support@aluratek.com](mailto:support@aluratek.com)

**Web:** [aluratek.com/pages/contact](http://aluratek.com/pages/contact)

**Local:** (Irvine, CA): 714-586-8730

**Toll free:** 1-866-580-1978

## Product Registration

Scan the QR code to register your product. Get promotional offers and faster support help for the term of the warranty.



## Warranty

Aluratek warrants this product against defect in material or workmanship for **1 YEAR** from the date of purchase. This warranty becomes invalid if the factory-supplied serial number or “warranty void” sticker has been removed or altered on the product.

This warranty does not cover:

- A) Cosmetic damage or damage due to acts of God
- B) Accident, misuse, abuse, negligence or modification of any part of the product.
- C) Damage due to improper operation or maintenance, connection to improper equipment, or attempted repair by anyone other than Aluratek.
- D) Products sold AS IS or WITH FAULTS.

IN NO EVENT SHALL ALURATEK'S LIABILITY EXCEED THE PRICE PAID FOR THE PRODUCT FROM DIRECT, INDIRECT, SPECIAL, INCIDENTAL, OR CONSEQUENTIAL DAMAGES RESULTING FROM THE USE OF THE PRODUCT, IT'S ACCOMPANYING SOFTWARE, OR IT'S DOCUMENTATION.

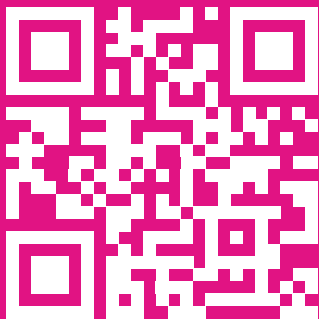
Aluratek makes no warranty or representation, expressed, implied, or statutory, with respect to it's products, contents or use of this documentation and all accompanying software, and specifically disclaims it's quality, performance, merchantability, or fitness for any particular purpose. Aluratek reserves the right to revise or update it's product, software or documentation without obligation to notify any individual or entity.

## Radio and TV Interference Statement

**WARNING!!!** This equipment has been tested and found to comply with the limits of a Class B digital device, pursuant to part 15 of the FCC rules. These limits are designed to provide reasonable protection against harmful interference in a residential installation.

This equipment generates, uses and can radiate radio frequency energy and, if not installed and used in accordance with the instruction, may cause harmful interference to radio communications. However, there is no guarantee that interference will not occur in a particular installation. If this equipment does cause harmful interference to radio or television reception, which can be determined by turning the equipment off and on, the user is encouraged to try to correct the interference by whatever measures may be required to correct the interference.

 Aluratek



[aluratek.com](https://aluratek.com)