

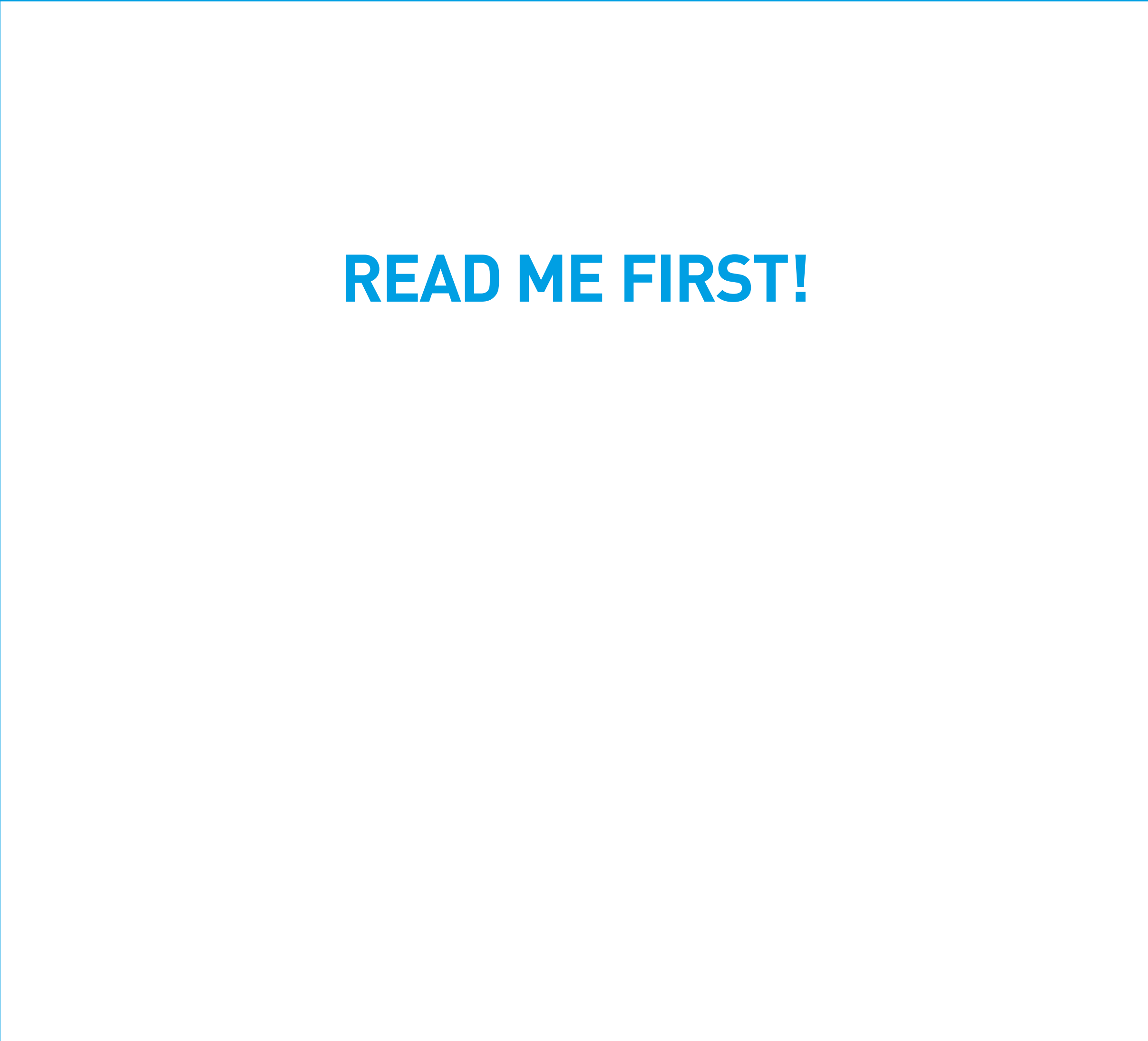
Hardware Quick Start Guide

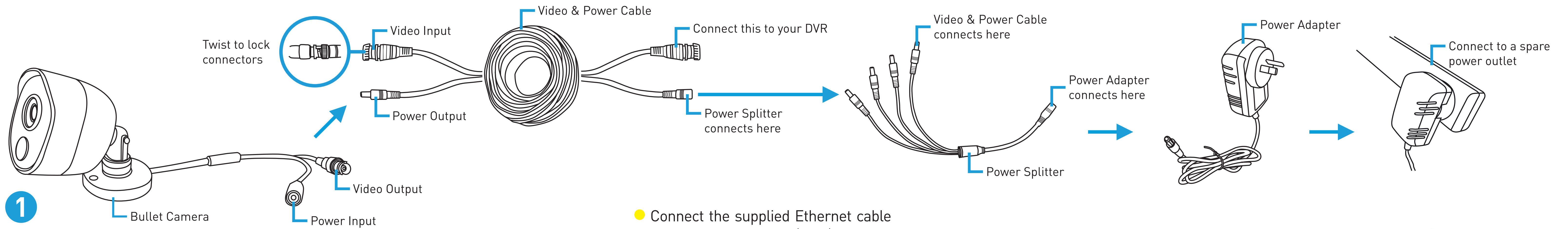
Welcome! Let’s get started.

To start using your DVR, you need the following:

- 1.A high-definition TV capable of displaying 1080p & 4K video. Look at the ports on the back of your TV to make sure it has an HDMI input.
- 2.A router with a broadband internet connection.
- 3.A mobile device (Android or iOS) to download the free Swann Security App.

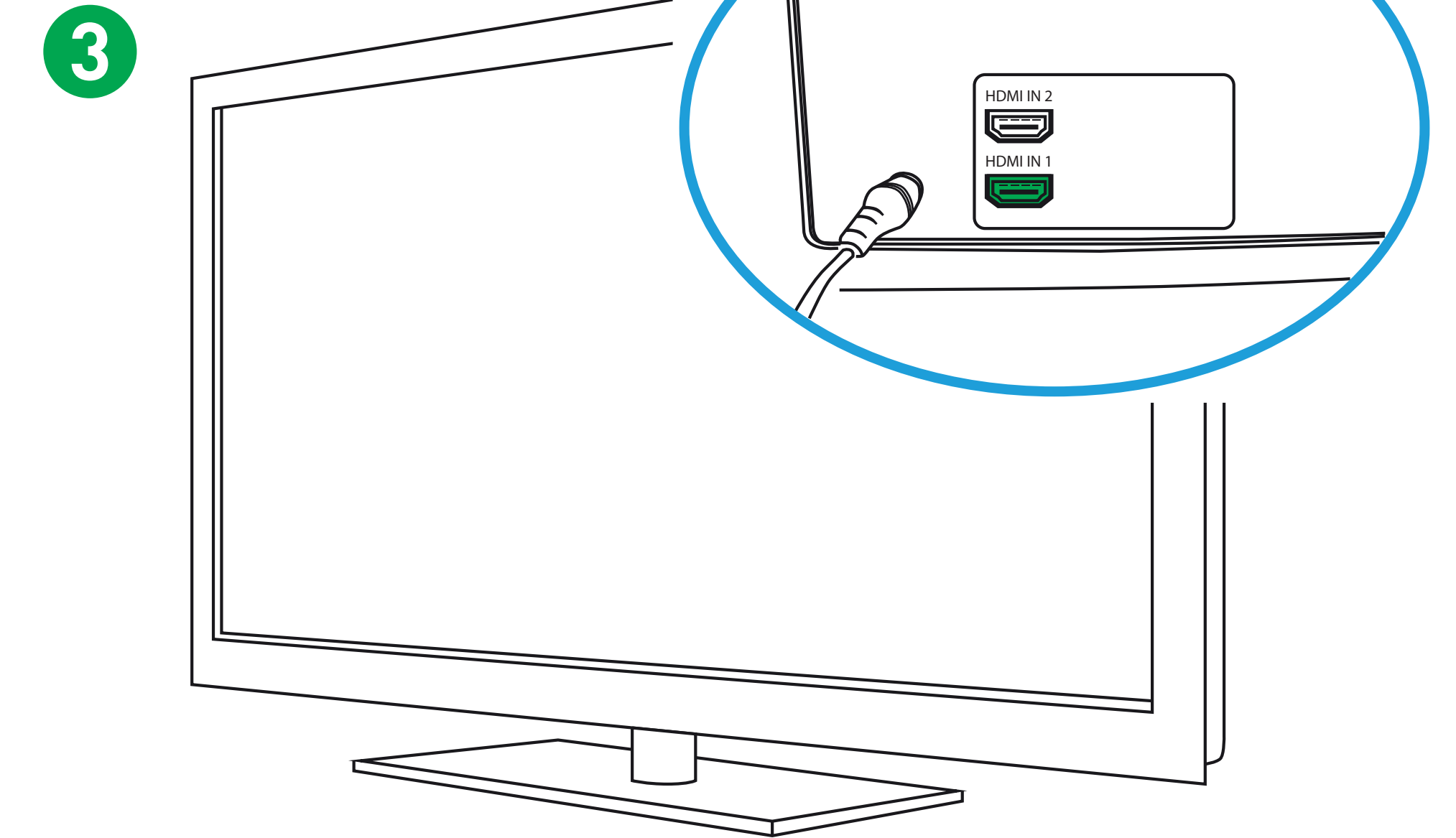
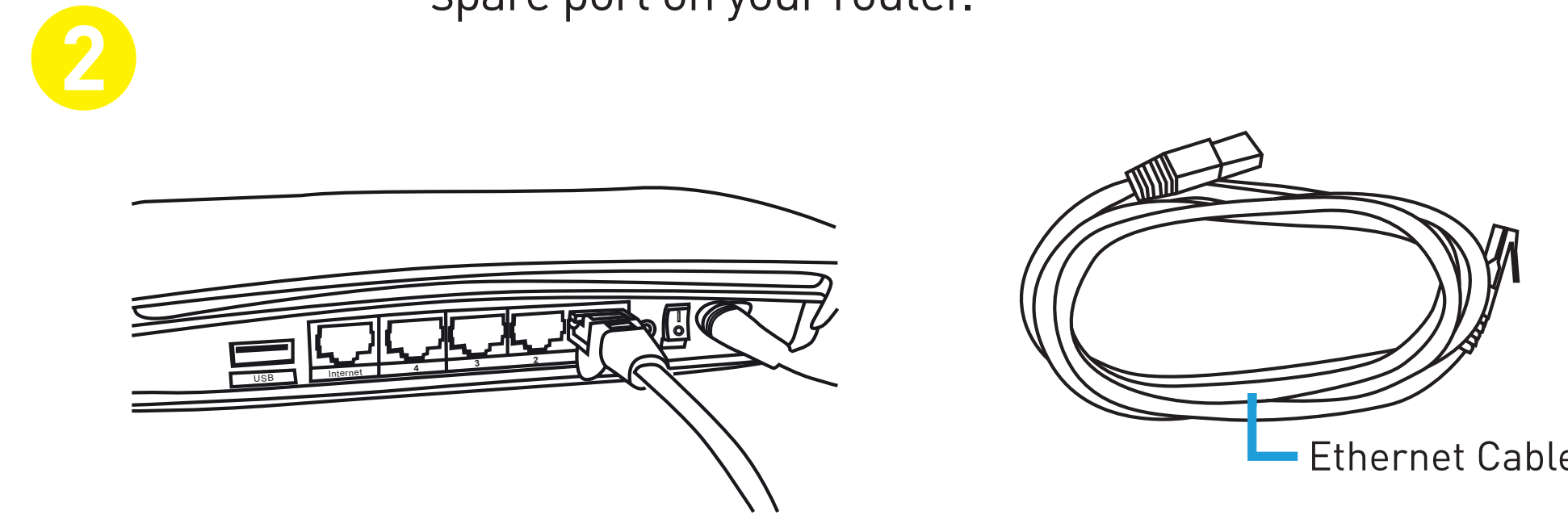
Carefully unpack each item and discard any packaging not required.





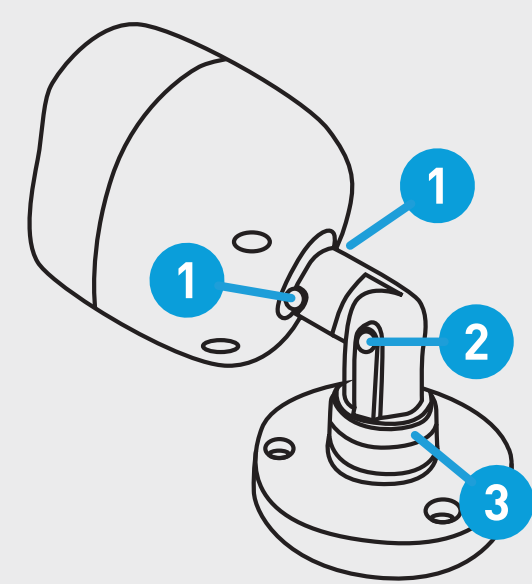
- Connect the video output on the video & power cable to each camera input (VIDEO INPUT) on your DVR. Twist the connection to lock it in place.

- Connect the supplied Ethernet cable to the Ethernet port (LAN) on your DVR then connect the other end to a spare port on your router.



- Connect the supplied HDMI cable to the HDMI port on your DVR then connect the other end to a spare HDMI input on your TV.

Press the A/V button on your TV's remote to select the HDMI input your DVR is connected to.



The bullet camera has three points of articulation. Use a Phillips head screwdriver to loosen the screw then adjust to the desired position. Tighten the screw again to secure in place.

Positioning the bullet camera

To avoid damage, don't position the camera without loosening the screws first.

- 1 This enables you to rotate the camera left or right.

- 2 This enables you to position the camera up or down.

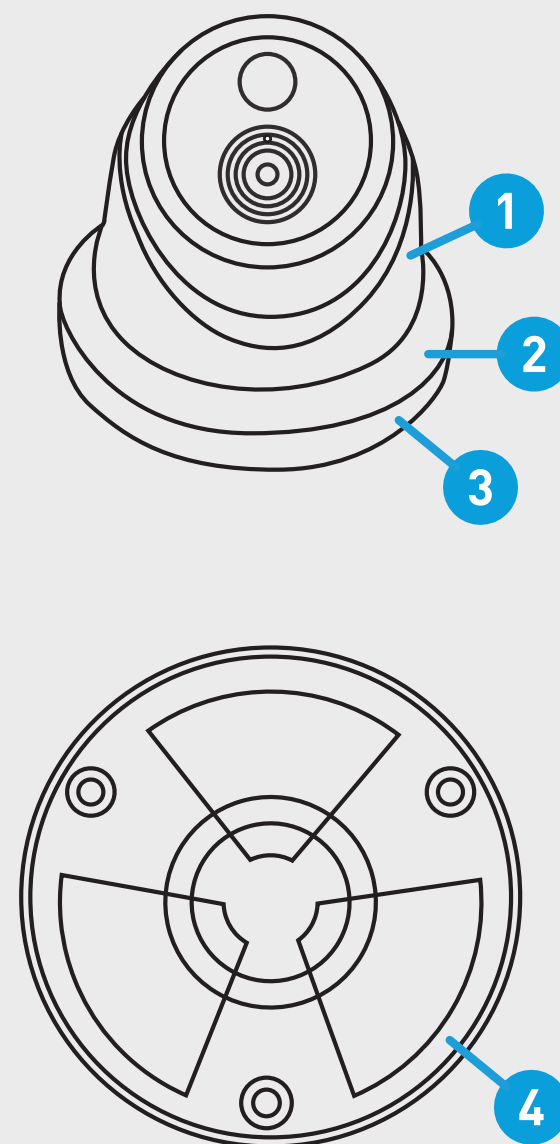
- 3 Loosen the locking screw counter clockwise to rotate the camera stand left or right. Tighten to secure in place.

Mounting and aiming the dome camera

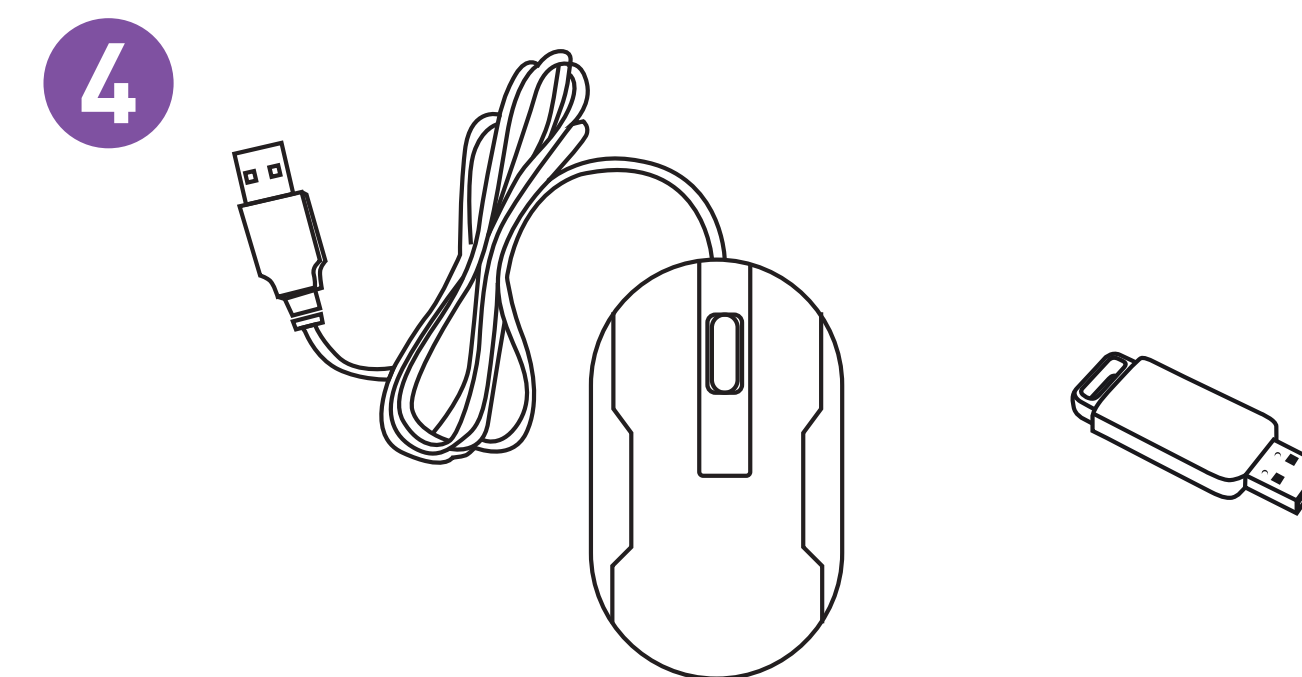
- 1. Hold the dome enclosure (1) and the dome ring (2) then rotate the mounting bracket (3) clockwise to remove it from the camera.

- 2. Run the cable as required and using the appropriate screws for the surface you are mounting to, screw the bracket (4) to fasten.

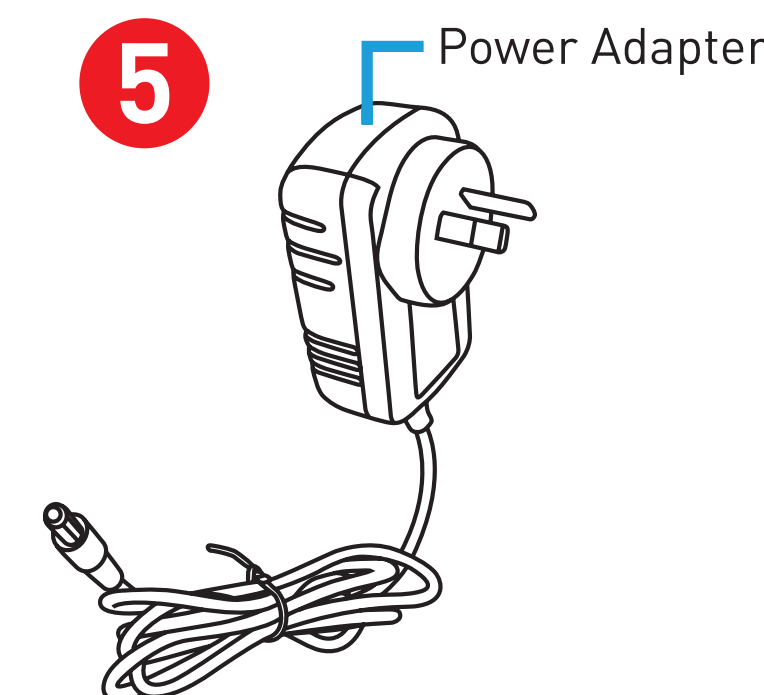
- 3. Place the camera into the dome enclosure and dome ring and aim the camera to the desired position. After you've finished adjusting the viewing position, rotate the dome ring to the mounting bracket counter clockwise to lock the position in place.



- Connect the supplied mouse to the USB port.



- To copy recorded events and to perform a firmware upgrade, connect a storage device such as a USB flash drive (not included) to the front ports.



- Connect the supplied power adapter's power connection to the power input (12V) on your DVR first (this will minimise sparking). Connect the power adapter to a spare power outlet.

Your DVR is designed to ventilate air to keep it at an optimal temperature. Keep both sides of your DVR free from obstructions to allow it to ventilate.

What are the additional connections for?

Audio Input: For connecting a microphone (the microphone must have its own power source).

Audio Output: For connecting to a stereo or amplifier. This is not required when using the HDMI port.

PTZ Port: For connecting RS-485 compatible devices.

VGA Port: Connect this to your monitor with a VGA input (VGA cable not supplied). This is not required when using the HDMI port.