

INSIGNIA™



Please see www.insigniaproducts.com for the latest Quick Start Guide and troubleshooting.

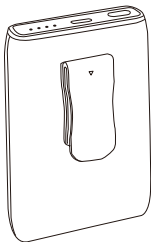
QUICK SETUP GUIDE

Extended Life Battery Pack for Oculus Quest 2

NS-Q2BP

PACKAGE CONTENTS

- Extended Life Battery Pack
- Detachable Clip
- USB Type C Charge Cable
- Quick Setup Guide



Before using your new product, please read these instructions to prevent any damage.

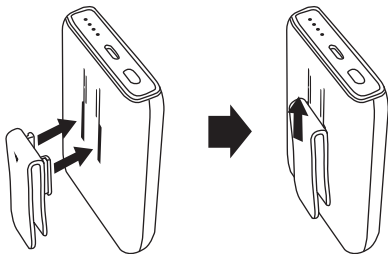
SAFETY INFORMATION

- Read these instructions.
- To preserve battery lifespan, fully recharge at least once every four months.
- Avoid direct and active contact with the battery and/or cable during active charging.
- Replacement of a battery with an incorrect type will defeat the safeguards.
- WARNING: Disposal of a battery into fire or a hot oven, or mechanically crushing or cutting of a battery, can result in an explosion.
- WARNING: Leaving a battery in an extremely high temperature surrounding environment can result in an explosion or the leakage of flammable liquid or gas.
- WARNING: A battery subjected to extremely low air pressure (altitudes above 6500 ft. [2000 m]) may result in an explosion or the leakage of flammable liquid or gas.
- Exceeding the operating or storage temperatures stated in the specifications could result in damage to your battery pack.
- WARNING: The battery pack is designed for charging the VR headset only, do not charge other incompatible devices.
- CAUTION: Risk of fire and burns. Do not open, crush, heat above 60°C or incinerate follow user manual.

FEATURES

- Intelligently designed to extend battery life
- Detachable clip for placement versatility
- 5,000 mAh Lithium battery capacity for extended playing time
- White LED indicator lights to show current battery level
- Includes 3ft USB type C charge cable

INSTALLING THE DETACHABLE CLIP

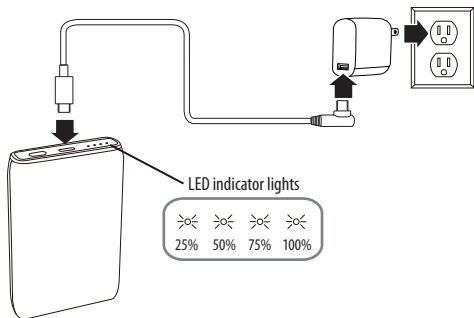


CHARGING YOUR BATTERY PACK

- 1 Plug in the USB Type-C charging cable (included) into a USB Type-C wall charger (You may use the AC adapter that came with your Oculus).
- 2 Plug the other end of the cable into the USB Type-C port on the top of the battery pack.

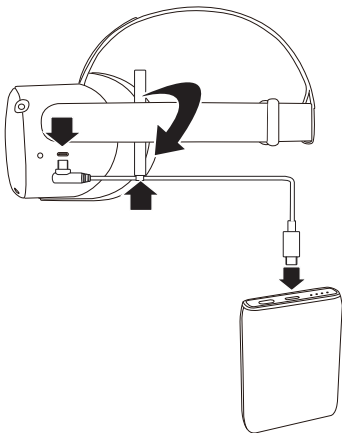
The LED indicator light should start blinking to indicate it is charging. Each LED represents 25% of the battery charge. When all lights are on and not blinking, it is fully charged.

Note: The indicator light only indicates the battery pack's charge level.



CHARGING YOUR OCULUS QUEST 2 HEADSET WITH THE BATTERY PACK

- 1** Plug the USB Type-C charging cable into the USB Type-C port on the left side of the headset. Adjust the velcro strap to secure the charge cable and prevent the cable from shaking during VR games.
- 2** Plug the other end of the cable into the USB Type-C port on the top of the battery pack.
- 3** Press the power button on the top of the battery pack once to start charging. To turn off the battery pack, press and hold the power button for three seconds.



SPECIFICATIONS

- **Dimensions (H × W × D):** 3.9 × 2.4 × 0.9 in. (10 × 6.2 × 2.5 cm)
- **Battery capacity:** 5,000 mAh, 3.8 V, 19 Wh
- **Input:** 5 V/2 A
- **Output:** 5 V/3 A, 9 V/3 A, 12 V/1.5 A
- **Charging cable length:** 3 ft. (1m)
- **Operating temperature:** 15 °C - 33 °C (59 °F - 91.4 °F)
- **Storage temperature:** -5 °C - 35 °C (23 °F - 95 °F)

TROUBLESHOOTING

The Headset is not charging.

- Make sure that the power button has been pressed.
- Make sure there isn't debris inside the charge port.
- Check the battery level of the battery pack by pressing the power button. If the battery indicator lights do not light up, it needs to be charged.
- When temperatures exceed 140°F / 60°C, all four LEDs flash. To prevent the risk of damage, the battery pack automatically stops charging. Charging functionality returns when temperatures fall below 140°F / 60°C.

LEGAL NOTICES

FCC Information

This device complies with part 15 of the FCC Rules. Operation is subject to the following two conditions: (1) This device may not cause harmful interference, and (2) this device must accept any interference received, including interference that may cause undesired operation.

Warning: : Changes or modifications to this unit not expressly approved by the party responsible for compliance could void the user's authority to operate the equipment.

Note: This equipment has been tested and found to comply with the limits for a Class B digital device, pursuant to Part 15 of the FCC Rules. These limits are designed to provide reasonable protection against harmful interference in a residential installation. This equipment generates, uses and can radiate radio frequency energy and, if not installed and used in accordance with the instructions, may cause harmful interference to radio communications.

However, there is no guarantee that interference will not occur in a particular installation. If this equipment does cause harmful interference to radio or television reception, which can be determined by turning the equipment off and on, the user is encouraged to try to correct the interference by one or more of the following measures:

- Increase the separation between the equipment and receiver. Reorient or relocate the receiving antenna.
- Increase the separation between the equipment and receiver.
- Connect the equipment into an outlet on a circuit different from that to which the receiver is connected.
- Consult the dealer or an experienced radio/TV technician for help.

ICES-003 Statement

This Class B digital apparatus complies with Canadian ICES-003.

ONE-YEAR LIMITED WARRANTY

Visit www.insigniaproducts.com for details.

CONTACT INSIGNIA:

For customer service, call 1-877-467-4289 (U.S. and Canada)

www.insigniaproducts.com

INSIGNIA is a trademark of Best Buy and its affiliated companies.
Distributed by Best Buy Purchasing, LLC 7601 Penn Ave South, Richfield,
MN 55423 U.S.A. ©2021 Best Buy. All rights reserved.

Made in China

ENGLISH V3-21-0806